

GENERAL NOTES:

ALL WIRING, INCLUDING CONTROL & NETWORK WIRING/CABLING NOT PROVIDED BY SIGNIFY UNLESS NOTED OTHERWISE. ENCLOSURES for CONTROLLERS/INTERFACES NOT by SIGNIFY. (Optional Separate or Assembled Enclosure Available for Additional Cost).

1) ONE-LINE DIAGRAMS INDICATE THE REQUIRED GROUPING OF WIRES, NOT THE NUMBER OR SIZE OF CONDUITS. ONE-LINE SYMBOLS ARE FOR REFERENCE ONLY AND MAY NOT REFLECT INSTALLED CONFIGURATION.

2) THESE DRAWINGS MAY ILLUSTRATE DEVICE MOUNTING LOCATIONS. THE LOCATIONS SHOWN SHOULD BE ADJUSTED IN THE FIELD BASED ON AESTHETICS/CLIENT DIRECTION, SITE CONDITIONS, WIRING METHODS, AND APPLICABLE CODES AND STANDARDS.

3) THIS SYSTEM SHOULD BE REVIEWED AND INSTALLED BY A QUALIFIED PERSON/ENTITY.

4) INSTALL PER EQUIPMENT LABELING AND INSTALLATION INSTRUCTIONS, INCLUDING TORQUE INFORMATION AND TEMPERATURE & HUMIDITY REQUIREMENTS PER DATA & INSTALLATION SHEETS. UNLESS RATED OTHERWISE, SIGNIFY EQUIPMENT MUST BE INSTALLED, MAINTAINED, AND OPERATED IN "OFFICE CLEAN" INDOOR DRY LOCATIONS ONLY.

5) WIRING & USE OF JUNCTION BOXES, RACEWAYS, ETC., SHALL CONFORM TO NATIONAL & LOCAL ELECTRICAL CODES, INCLUDING PROVISION OF EQUIPMENT GROUNDING AS REQUIRED, AND INCLUDING BUT NOT LIMITED TO NEC® 110.3(B) & 110.26.

6) POWER CONDUCTORS SHALL BE SIZED PER THE NEC® AMPACITY TABLES (ARTICLE 310), INCLUDING ADJUSTMENT FACTOR AND NEUTRAL CONDUCTOR REQUIREMENTS - FEED & BRANCH NEUTRAL CONDUCTORS MUST BE COUNTED AS CURRENT CARRYING CONDUCTORS. RUN SEPARATE NEUTRAL CONDUCTORS FOR EACH LOAD CIRCUIT.

7) ALL CONTROL WIRING SHOULD BE RUN IN METAL CONDUIT OR EMT AND MUST NOT SHARE THE SAME RACEWAY OR CONDUIT WITH POWER, AUDIO, OR VIDEO CONDUCTORS. 10% SPARES RECOMMENDED. CONTRACTOR IS RESPONSIBLE FOR ALL CONTROL TERMINATIONS. NO SPLICES PERMITTED.

* - Preferred, but Not Required

8) SIGNIFY IS NOT RESPONSIBLE FOR DAMAGE TO EQUIPMENT CAUSED BY PAINT, DUST, SOLVENTS, OR CLEANING SUPPLIES.

① 120 or 277 VAC 20A BRANCH CIRCUITS *** (NOT by Signify)

② CONTROLLER INPUT POWER: 1Ø 2 WIRE w/ GND 120 VAC 60 Hz (NOT by Signify)

②a CONTROLLER INPUT POWER: 1Ø 2 WIRE w/ GND 120 or 277 VAC 60 Hz (NOT by Signify)

③ POWER (From Panelboard): 1Ø 2 WIRE w/ GND 120 or 277 VAC 60 Hz (NOT by Signify)

④ CLASS 1 DALI or CLASS 2 10V CONTROL PAIRS (NOT by Signify)

*** - BRANCH CIRCUIT WIRING NOTES:

(120-277VAC 16A - PER CIRCUIT)

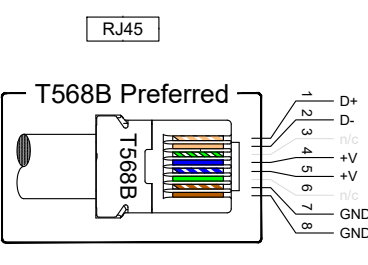
DALI BRANCH CIRCUITS SHOULD ROUTE THROUGH LOAD CONTROLLER FOR MAXIMUM ENERGY SAVINGS, BUT MAY ROUTE DIRECTLY TO LUMINAIRES, BYPASSING THE DALI LOAD CONTROLLERS.

10V BRANCH CIRCUITS MUST BE ROUTED THROUGH THE LOAD CONTROLLERS

DIRECT ROUTING REQUIRED FOR 347VAC; 347VAC LOADS DO NOT CONNECT TO LOAD CONTROLLERS EXCEPT w/ DMC DMD316FR MODULES)

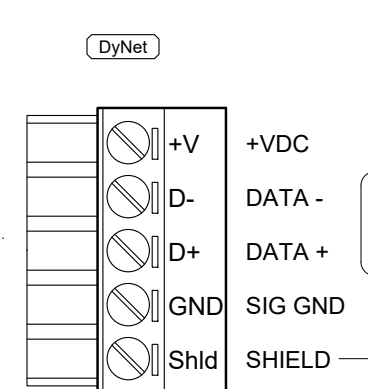
RJ45 (T568B)

Signal Name	Cat 5e/6 HardWire RJ45 T568B Color Scheme	DMX512 Cat Set
+ VDC	Blue (4) / Blue-White (5)	N/C
Data -	Orange (2)	D-
Data +	Orange-White (1)	D+
Signal Gnd	Brown-White (7) / Brown (8)	GND
SHIELD	Shield	N/C
No Connection	Green (3) / Green-White (6)	N/C



DyNet Networks:

Signal Name	Belden 1502R or P Wire Color
+ VDC	Red
Data -	White
Data +	Blue
Signal Gnd	Black
SHIELD	Shield



DyNet RS-485 NETWORK CARRIES COMMANDS FROM USER INPUT DEVICES AND CARRIES FEEDBACK TO INPUT DEVICES (SENSORS, KEYPADS, COMPUTER, A/V, BMS)

DyNet CABLE RUNS MUST BE ROUTED IN A "DAISY-CHAIN" CONFIGURATION. CAT 5e / CAT 6 CABLE IS PERMITTED IN SMALL INSTALLATIONS, BUT MAY REQUIRE ADDITIONAL POWER SUPPLIES.

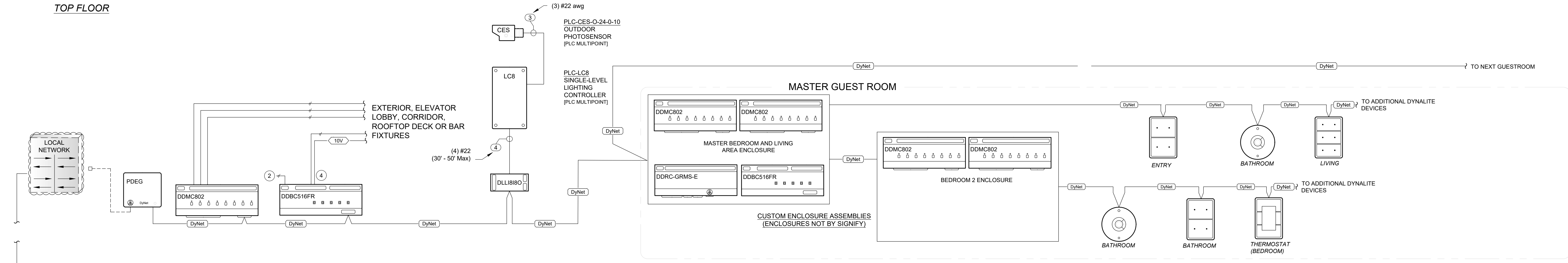
DALI (2) CLASS 1 CONDUCTORS for DALI DRIVERS/DEVICES

10V (2) CLASS 2 CONDUCTORS for 0(1)-10V DRIVERS

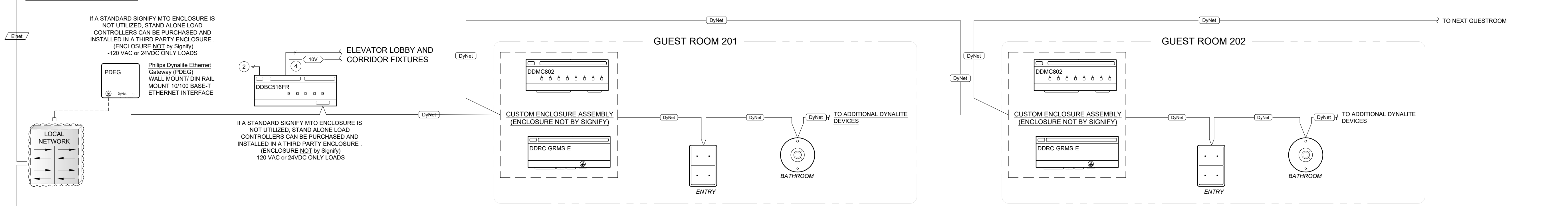
ETHERNET CABLING (Cat 5e or Better or Fiber - per Facility IT)

DMX512 DMX512 CABLING (CLASS 2)

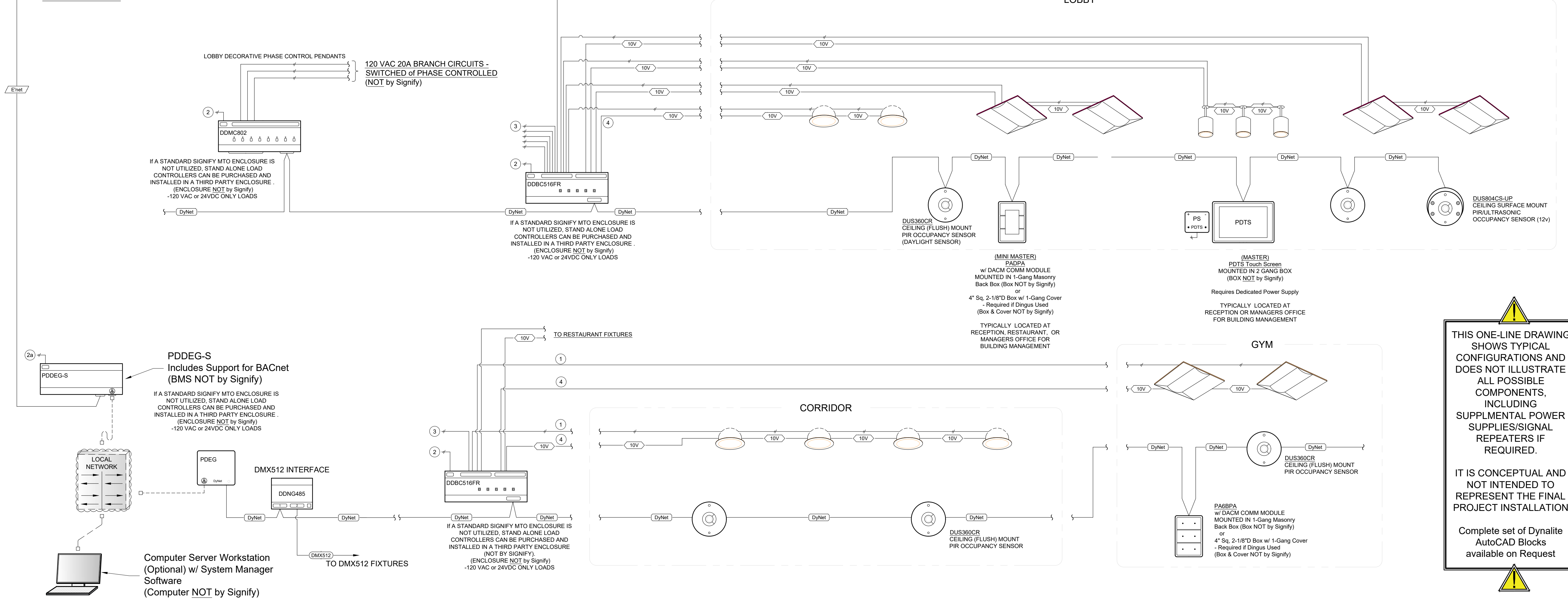
TOP FLOOR



SECOND FLOOR FLOOR



GROUND FLOOR



THIS ONE-LINE DRAWING SHOWS TYPICAL CONFIGURATIONS AND DOES NOT ILLUSTRATE ALL POSSIBLE COMPONENTS, INCLUDING SUPPLEMENTAL POWER SUPPLIES/SIGNAL REPEATERS IF REQUIRED.

IT IS CONCEPTUAL AND NOT INTENDED TO REPRESENT THE FINAL PROJECT INSTALLATION

Complete set of Dynalite AutoCAD Blocks available on Request

Signify

THIS DRAWING HAS BEEN RELEASED FROM SIGNIFY AND MAY HAVE BEEN MODIFIED BY A THIRD PARTY. SIGNIFY CANNOT GUARANTEE THE ACCURACY OF THE DATA CONTAINED WITHIN THIS DRAWING SET. Specifications are subject to change without notice. No representation or warranty as to the accuracy or completeness of the information included herein is given and any liability for any action in reliance thereon is disclaimed. Philips and the Philips Shield Emblem are registered trademarks of Koninklijke Philips N.V. All other trademarks are owned by Signify Holding or their respective owners.

STATUS

DRAFTER

SFID

DRAWING SCALE: nts

DATE

-PD01d

SECTION Q4 2023

TITLE

Sample Dynalite HOTEL System (Not All Products or Configurations Shown)

REV DESCRIPTION

BY DATE

Tel: 800.555.0050

1 Van de Graaff Drive Burlington, MA 01803