



Design Ready

10-day QuickShip



# Design Ready

As the complexity of your projects skyrocket, faster delivery becomes increasingly important.

The Ledalite 10-day QuickShip program includes all of our high performance and award-winning LED linear, recessed, surface, and slot luminaire families.

## Conditions

Quick Ship orders will ship within 10 business days from the date the order is processed. **Orders must be placed using the suffix -QS on the catalog code for quick ship to apply.** Orders must be standalone and must be submitted by API.

- **Linear Luminaires:** Limit of 500 linear ft per release
- **Discrete Recessed & Suspended:** Limit of 100 luminaires per release

## Exclusions

- Hold for Release or Do Not Ship Before orders
- Patterns or rows that require drawings
- All non-standard, 3rd party drivers and components
- Connected options (Interact Pro)
- Tunable White
- Thru-wiring for additional circuits
- 347V with Battery pack
- Surface mount only available in TruGroove and TruGroove micro
- Wall mount luminaires
- Air Return housing

Please refer to product spec sheets for all other product specific exclusions.



# Table of contents

## Architectural Linear

### Linear Suspended & Surface

TruGroove Suspended . . . . .	6
TruGroove Surface . . . . .	7
TruGroove Suspended micro . . . . .	8
TruGroove Surface micro . . . . .	9
ModiFly Suspended . . . . .	10
BoldPlay Suspended . . . . .	11
Sync Suspended . . . . .	12
Verge Suspended . . . . .	13
Chopstick Suspended . . . . .	14
Jump Suspended . . . . .	15
Sona Suspended . . . . .	16
FloatPlane Suspended . . . . .	17
SyncLine Suspended . . . . .	18

### Linear Recessed, Cove, & Perimeter

TruGroove Recessed . . . . .	22
TruGroove Recessed micro . . . . .	23
TruGroove Cove . . . . .	24
TruGroove Perimeter . . . . .	25

## Architectural Recessed

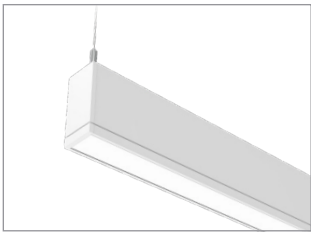
### Discrete Recessed & Suspended

ArcForm Duo . . . . .	30
Pique Duo . . . . .	31
SilkSpace Definition . . . . .	32
Shine . . . . .	33
DecoForm . . . . .	34

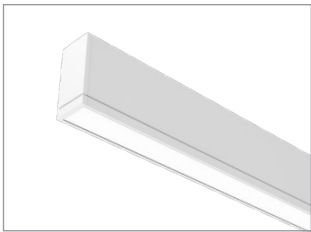


# Architectural Linear

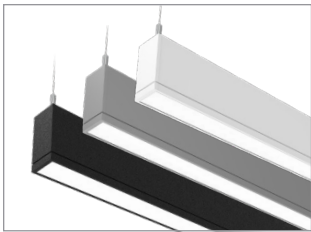
## Linear Suspended & Surface



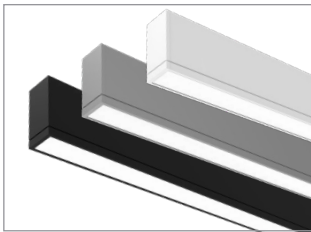
**TruGroove**  
Suspended



**TruGroove**  
Surface



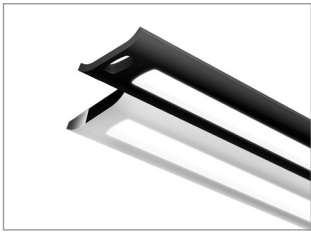
**TruGroove micro**  
Suspended



**TruGroove micro**  
Surface



**ModiFly**  
Suspended



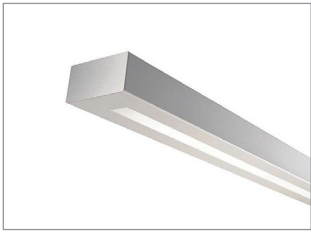
**BoldPlay**  
Suspended



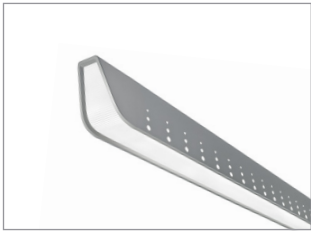
**Sync**  
Suspended



**Verge**  
Suspended



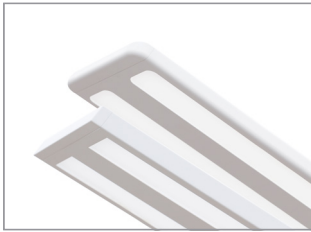
**Chopstick**  
Suspended



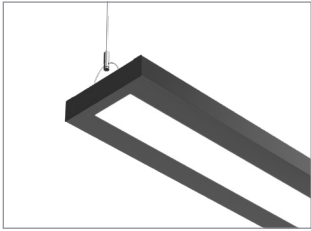
**Jump**  
Suspended



**Sona**  
Suspended



**FloatPlane**  
Suspended

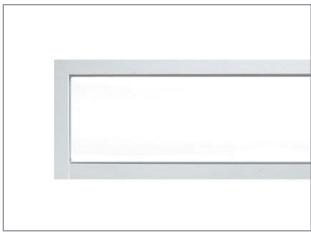


**SyncLine**  
Suspended

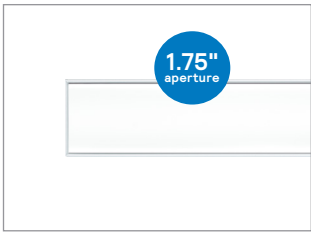


# Architectural Recessed

## Linear Recessed, Cove, & Perimeter



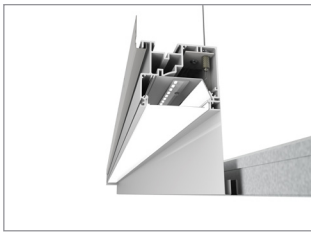
**TruGroove**  
Recessed



**TruGroove micro**  
Recessed

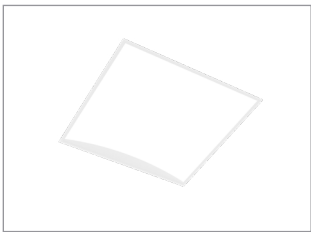


**TruGroove cove**

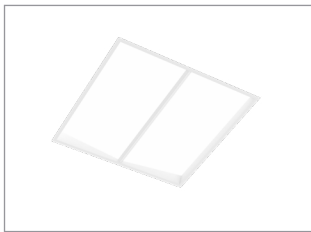


**TruGroove perimeter**

## Discrete Recessed & Suspended



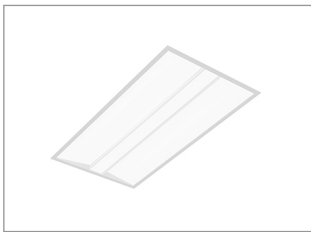
**ArcForm Duo**  
Recessed



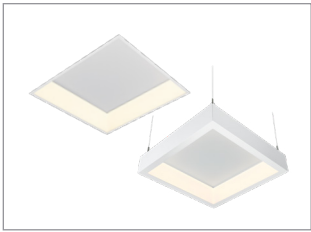
**Pique Duo**  
Recessed



**SilkSpace definition**  
Recessed



**Shine**  
Recessed



**DecoForm**  
Recessed & Suspended

# Linear Suspended & Surface



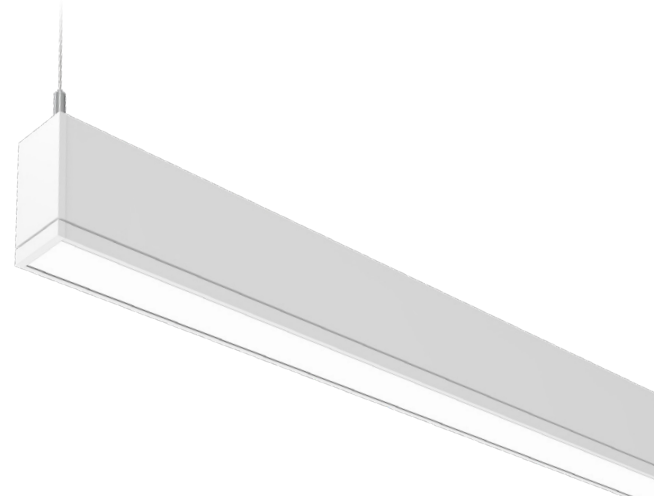






# TruGroove Suspended

Seamless 3" ribbon of light with **exceptional performance and versatility** for functional and decorative applications



## Why choose TruGroove Suspended?

- Elevate performance to a whole new level in narrow aperture lighting
- Wide row spacing with fewer fixtures and less energy consumption
- Ideal for a variety of applications with multiple distributions and modules
- MesoOptics DX and innovative optics producing an optimal batwing distribution



## Ordering guide

Family	Version	Distribution	Source	CRI/CCT
29 TruGroove	0 Suspended	1 Direct	L LED	950 CRI 90, 5000K
		3 Indirect		940 CRI 90, 4000K
		5 Indirect/Direct		935 CRI 90, 3500K
		6 Direct/Indirect		930 CRI 90, 3000K
				927 CRI 90, 2700K
Lumens	Optics			Run Length
40 4000lm/4ft	LN	Definition symmetric flush silk lens (Dn)		02 2ft
30 3000lm/4ft	QN	Performance symmetric flush MesoOptics lens (Dn)		04 4ft
22 2200lm/4ft	WN	Performance asymmetric wall wash flush MesoOptics lens (Dn)		06 6ft
15 1500lm/4ft				08 8ft
48 4800lm/4ft	NQ	Performance symmetric lens (Up)		XX Continuous run in 2ft increments (please specify length)
32 3200lm/4ft	NW	Performance asymmetric lens (Up)		
68 6800lm/4ft (70% up)	LQ	Definition symmetric flush silk lens (Dn)		
52 5200lm/4ft (60% up)		Performance symmetric lens (Up)		
46 4600lm/4ft (70% up)	QQ	Performance symmetric MesoOptics lens (Dn)		
35 3500lm/4ft (60% up)		Performance symmetric lens (Up)		
68 6800lm/4ft (60% down)		Performance symmetric lens (Up)		
52 5200lm/4ft (60% down)	WW	Performance asymmetric wall wash MesoOptics lens (Dn)		
46 4600lm/4ft (70% down)		Performance asymmetric wall wash MesoOptics lens (Dn)		
35 3500lm/4ft (60% down)		Performance symmetric lens (Up)		
Voltage	Driver	Circuit	Wiring Option	System/Controls
D UNV 120-277V	E Advance Xitanium 0-10V (1% Dim)	1 Single circuit	N None	NN None
3 347V			B Battery pack	
			E Auxiliary wiring	
Finish	Mount Type			Suspension
W Standard white	A1	Non-accessible ceiling, 0°-15° slope mount	A6-1 T-Grid on-grid mount 15/16" (non tegular tile only)	24 24"
T Titanium silver	A2	T-Grid fixed position mount		48 48"
B Black	A3	Non-accessible ceiling, 0°-90° slope mount	A6-2 T-Grid on-grid mount 9/16" (non tegular tile only)	96 96"
G Graphite grey	A5	T-Grid 24" span mount (non tegular tile only)	A6-3 T-Grid on-grid mount 9/16" x 5/16" (slot tee & tegular tile)	144 144"

\*Please refer to exclusions.

**DLC Note:** Not all product variations are DLC qualified. To ensure that a specific model is qualified, visit [www.designlights.org/search](http://www.designlights.org/search)



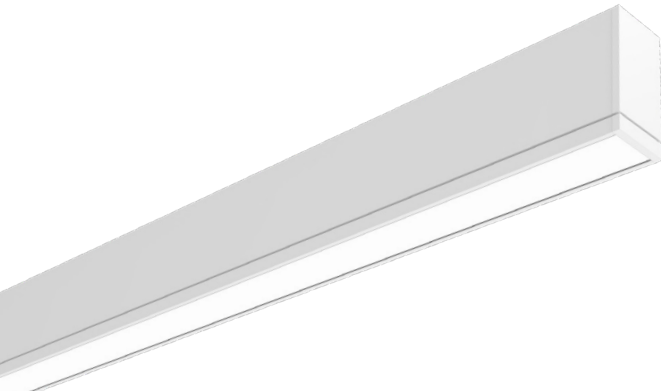
interact  
ready.





# TruGroove Surface

Exceptional uniformity and wide row spacing from a 3" aperture continuous line of light



## Why choose TruGroove Surface?

- MesoOptics DX and innovative optics producing optimal batwing distribution
- An extended family and refined design are perfect for lighting any professional space
- Wide row spacing with fewer fixtures and less energy consumption
- Ideal for a variety of applications with multiple distributions and modules

## Ordering guide

Family	Version	Distribution	Source	CRI/CCT
29 TruGroove	1 Surface	1 Direct	L LED	950 CRI 90, 5000K 940 CRI 90, 4000K 935 CRI 90, 3500K 930 CRI 90, 3000K 927 CRI 90, 2700K
Lumens	Optics		Run Length	
40 4000lm/4ft 30 3000lm/4ft 22 2200lm/4ft 15 1500lm/4ft	LN Definition symmetric flush silk lens (Dn) QN Performance symmetric flush MesoOptics lens (Dn) WN Performance asymmetric wall wash flush MesoOptics lens (Dn)		02 2ft 04 4ft 06 6ft 08 8ft XX Continuous run in 2 ft increments (please specify length)	
Voltage	Driver	Circuit	Wiring Option	System/Controls
D UNV 120-277V 3 347V	E Advance Xitanium 0-10V (1% Dim)	1 Single circuit	N None B Battery pack E Auxiliary wiring	NN None
Finish		Mount Type		
W Standard white T Titanium silver B Black G Graphite grey		SF Surface mounted		

\*Please refer to exclusions.

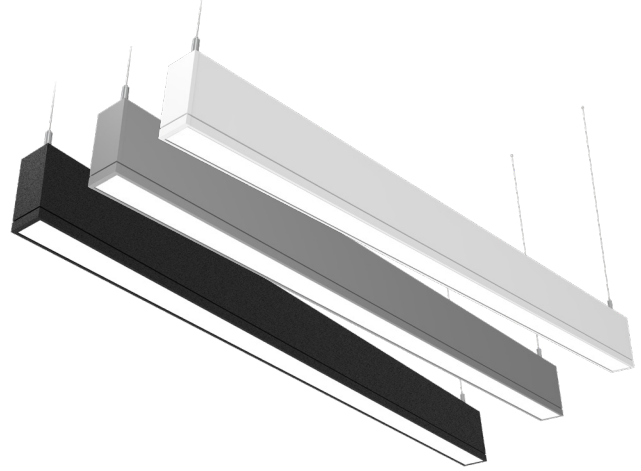


interact  
ready.



# TruGroove Suspended micro

Seamless 1.75" ribbon of light with **exceptional performance and versatility** for functional and decorative applications



## Why choose TruGroove Suspended micro?

- Unique Quad Optic louver cells offer a wide range of options from graze to stack to asymmetric wall wash
- Wide row spacing with fewer fixtures and less energy consumption
- 20+ Lighting distributions which are ideal for a variety of applications



## Ordering guide

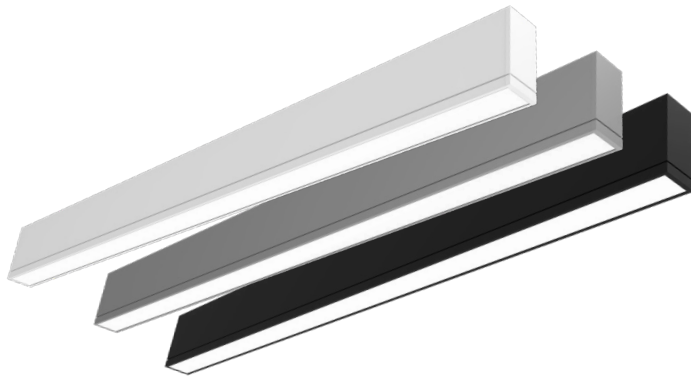
Family	Version	Distribution	Source	CRI/CCT	
TM TruGroove micro	0 Suspended	1 Direct 3 Indirect 5 Indirect/Indirect 6 Direct/Indirect	L LED	950	CRI 90, 5000K
				940	CRI 90, 4000K
				935	CRI 90, 3500K
				930	CRI 90, 3000K
				927	CRI 90, 2700K
Optics (Direct)		Lumens (Direct)	Optics (Indirect)		Lumens (Indirect)
Lens	Louver Cell				
N No lens (specify direct louver and/or indirect optic)	NNNN None	NN None	N None	NN	None
Q Performance symmetric batwing flush MesoOptics		40 4000lm/4ft	Q Performance symmetric	70	7000 lm/4ft
W Performance asymmetric/wall wash flush MesoOptics		35 3500lm/4ft	W Performance asymmetric	60	6000 lm/4ft
L Definition symmetric flush silk		30 3000lm/4ft		50	5000 lm/4ft
		25 2500lm/4ft		40	4000 lm/4ft
		20 2000lm/4ft		30	3000 lm/4ft
		15 1500lm/4ft		20	2000 lm/4ft
		10 1000lm/4ft		10	1000 lm/4ft
Run Length	Voltage	Driver	Circuit	Wiring Option	Systems/Controls
02 2ft 05 5ft	D UNV 120-277V	E Advance Xitanium	1 Single circuit	N None	NN None
03 3ft 06 6ft	3 347V	0-10V (1% Dim)		B Battery pack	
04 4ft 08 8ft				E Auxiliary wiring	
XX Continuous run in 1ft increments (please specify length)					
Finish	Mount Type		Suspension		
W Standard white	A1 Non-accessible ceiling, 0°-15° slope mount	A6-1 T-Grid on-grid mount 15/16" (non tegular tile only)	24	24"	
T Titanium silver	A2 T-Grid, fixed position mount	A6-2 T-Grid on-grid mount 9/16" (non tegular tile only)	48	48"	
B Black	A3 Non-accessible ceiling, 0°-90° slope mount	A6-3 T-Grid on-grid mount 9/16" x 5/16" (slot tee & tegular tile)	96	96"	
G Graphite grey	A5 T-Grid 24" span mount (non tegular tile only)		144	144"	

\*Please refer to exclusions.

**DLC Note:** Not all product variations are DLC qualified. To ensure that a specific model is qualified, visit [www.designlights.org/search](http://www.designlights.org/search)







# TruGroove Surface micro

Innovative optics deliver **exceptional uniformity and wide row spacing** from a 1.75" aperture continuous line of light



## Why choose TruGroove Surface micro?

- MesoOptics DX and innovative optics producing optimal batwing distribution
- Innovative quad optic louver cell provides visual comfort with excellent performance
- Smaller and more versatile
- Ideal for a variety of applications with multiple distributions and modules

## Ordering guide

Family	Version	Distribution	Source	CRI/CCT
TM TruGroove micro	1 Surface	1 Direct	L LED	<b>950</b> CRI 90, 5000K <b>940</b> CRI 90, 4000K <b>935</b> CRI 90, 3500K <b>930</b> CRI 90, 3000K <b>927</b> CRI 90, 2700K
Optics (Direct)		Lumens (Direct)	Optics (Indirect)	Lumens (Indirect)
Lens	Louver Cell			
N No lens (specify direct louver)	NNNN None	NN None	N None	NN None
Q Performance symmetric batwing flush MesoOptics		40 4000lm/4ft		
W Performance asymmetric/wall wash flush MesoOptics		35 3500lm/4ft		
L Definition symmetric flush silk		30 3000lm/4ft		
		25 2500lm/4ft		
		20 2000lm/4ft		
		15 1500lm/4ft		
		10 1000lm/4ft		
Run Length	Voltage	Driver	Circuit	Wiring Option
02 2ft 05 5ft	D UNV 120-277V	E Advance Xitanium 0-10V (1% Dim)	1 Single circuit	N None
03 3ft 06 6ft	3 347V			B Battery pack
04 4ft 08 8ft				E Auxiliary wiring
XX Continuous run in 1ft increments (please specify length)				
Systems/Controls	Finish		Mount Type	
NN None	W Standard white		SF Surface mounted	
	T Titanium silver			
	B Black			
	G Graphite grey			

\*Please refer to exclusions.



interact  
ready.



# ModiFly Suspended

The new **action hero** for lighting design. Simple, yet sophisticated, ModiFly has a style that lends itself perfectly to a variety of spaces.



## Why choose ModiFly Suspended?

- Vertical Light Guide technology produces a controlled batwing distribution with 72% downlight and up to 16ft o.c. spacing
- Multiple lumen package from 1500lm/4ft to 4500lm/4ft in 500lm steps
- Choose from 6 standard paint finishes, including Hero Gold, Silver Nova & Venom Black
- Fully articulating Bi-Link, Tri-Link & Quad-Link joints give you unlimited design options



## Ordering guide

Family	Version	Type	Source	CRI/CCT
MF ModiFly	O Standard	S Suspended	L LED	<b>950</b> CRI 90, 5000K <b>940</b> CRI 90, 4000K <b>935</b> CRI 90, 3500K <b>930</b> CRI 90, 3000K <b>927</b> CRI 90, 2700K
Lumens	Optics	Distribution	Run Length	
<b>45</b> 4500lm/4ft <b>40</b> 4000lm/4ft <b>35</b> 3500lm/4ft <b>30</b> 3000lm/4ft <b>25</b> 2500lm/4ft <b>20</b> 2000lm/4ft <b>15</b> 1500lm/4ft	Q Vertical light guide	N 75% down/25% up	<b>02</b> 2ft <b>04</b> 4ft <b>05</b> 5ft <b>06</b> 6ft <b>08</b> 8ft <b>XX</b> Continuous run >4ft in 1ft increments (please specify length)	
Voltage	Driver	Circuit	Wiring Option	System/Controls
<b>D</b> UNV 120-277V <b>3</b> 347V	E Advance Xitanium 0-10V (1% Dim)	1 Single circuit	<b>N</b> None <b>B</b> Battery pack <b>E</b> Auxiliary wiring	NN None
Finish	Mount Type	Suspension		
<b>W</b> Standard white <b>H</b> Hero gold <b>S</b> Silver nova <b>V</b> Venom black <b>T</b> Titanium silver <b>B</b> Black	<b>M1</b> Non-accessible ceiling, 0°-15° slope mount <b>M2</b> T-grid fixed position mount <b>M3</b> Non-accessible ceiling, 0°-90° slope mount <b>M6-1</b> T-grid on-grid mount 15/16" (non tegular tile only) <b>M6-2</b> T-grid on-grid mount 9/16" (non tegular tile only) <b>M6-3</b> T-grid on-grid mount 9/16" x 5/16" (slot tee & tegular tile)	<b>24</b> 24" <b>48</b> 48" <b>96</b> 96" <b>144</b> 144"		

\*Please refer to exclusions.





# BoldPlay Suspended

Unrivalled performance and **effortless style** make BoldPlay a benchmark for LED luminaires



## Why choose BoldPlay Suspended?

- MesoOptics and Light Guide technology
- Palette of color temperatures
- Optimal batwing distribution enabling wide row spacing
- Striking aesthetics characterized by effortless style and urban edginess

## Ordering guide

Family	Version	Type	Source	CRI/CCT
78 BoldPlay	0 Suspended	6 Direct/Indirect	L LED	A CRI 80, 4000K B CRI 80, 3500K C CRI 80, 3000K
Lumens	Optics	Distribution	Run Length	
A 6500lm/4ft C 4600lm/4ft E 3400lm/4ft	Q MesoOptics lens	N Lightguide (75% up) D 55% down kit G 80% down kit J 100% down kit	04 4ft 08 8ft XX Continuous run in 4ft increments (please specify length)	
Circuit/Wiring Option	Voltage	Driver	Finish	Options
7 Single circuit N Single circuit + Battery pack M Single circuit + Auxiliary wiring	D UNV 120-277V 3 347V	E Advance Xitanium 0-10V (1% Dim)	W Standard white T Titanium silver B Black	N None
System/Controls	Mount Type			Suspension
N None	A1 Non-accessible ceiling, 0°-15° slope mount A2 T-grid fixed position mount A3 Non-accessible ceiling, 0°-90° slope mount A5 T-grid 24" span mount (non regular tile only)	A6-1 T-grid on-grid mount 5/16" (non regular tile only) A6-2 T-grid on-grid mount 9/16" (non regular tile only) A6-3 T-grid on-grid mount 9/16" x 5/16" (slot tee & regular tile)	24 24" 48 48" 96 96" 144 144"	

\*Please refer to exclusions.



interact  
ready.



mesoOptics

# Sync Suspended

Sophisticated performance in a **clean and simple design** aesthetic for mainstream applications



## Why choose Sync Suspended?

- Low-profile design
- MesoOptics and Light Guide panel producing optimal batwing distribution
- Allows aesthetic continuity in a space when paired with Sync Wall
- Wide row spacing with fewer fixtures and less energy consumption



## Ordering guide

Family	Version	Type	Source	CRI/CCT
74 Sync	O Suspended	6 Direct/Indirect	L LED	A CRI 80, 4000K B CRI 80, 3500K C CRI 80, 3000K
Lumens	Optics	Distribution	Run Length	
A 6500lm/4ft C 4600lm/4ft E 3400lm/4ft	Q MesoOptics lens	N Lightguide (75% up) D 55% down kit G 80% down kit J 100% down kit	O4 4ft O8 8ft XX Continuous run in 4ft increments (please specify length)	
Circuit/Wiring Option	Voltage	Driver	Finish	
7 Single circuit N Single circuit + Battery pack M Single circuit + Auxiliary wiring	D UNV 120-277V 3 347V	E Advance Xitanium 0-10V (1% Dim)	W Standard white T Titanium silver B Black	
Mount Type			Suspension	
A1 Non-accessible ceiling, 0°-15° slope mount	A6-1 T-grid on-grid mount 5/16"	(non tegular tile only)	24	24"
A2 T-grid fixed position mount	A6-2 T-grid on-grid mount 9/16"		48	48"
A3 Non-accessible ceiling, 0°-90° slope mount	A6-3 T-grid on-grid mount 9/16" x 5/16"		96	96"
A5 T-grid 24" span mount (non tegular tile only)			144	144"

\*Please refer to exclusions.





# Verge Suspended

Uncompromising performance in an ultra slim, contemporary design



## Why choose Verge Suspended?

- Suspended and complementary wall mount versions
- Exceptional direct/indirect lighting performance in a sleek, geometric design
- Complete visual comfort with the perfect balance of brightness and glare control from all viewing angles
- Engineered to allow for wider spacings

## Ordering guide

Family	Version	Type	Source	CRI/CCT
76 Verge	0 Suspended	6 Direct/Indirect	L LED	A CRI 80, 4000K B CRI 80, 3500K C CRI 80, 3000K
Lumens	Optics	Distribution	Run Length	
A 6500lm/4ft C 4600lm/4ft E 3400lm/4ft	Q MesoOptics lens	N Lightguide (75% up) D 55% down kit G 80% down kit J 100% down kit	O4 4ft O8 8ft XX Continuous runs in 4ft increments (please specify length)	
Circuit/Wiring Option	Voltage	Driver	Finish	
7 Single circuit N Single circuit + Battery pack M Single circuit + Auxiliary wiring	D UNV 120-277V 3 347V	E Advance Xitanium 0-10V (1% Dim)	W Standard white T Titanium silver B Black	
Mount Type				Suspension
A1 Non-accessible ceiling, 0°-15° slope mount	A6-1 T-grid on-grid mount 15/16" (non tegular tile only)		24	24"
A2 T-grid fixed position mount	A6-2 T-grid on-grid mount 9/16" (non tegular tile only)		48	48"
A3 Non-accessible ceiling, 0°-90° slope mount	A6-3 T-grid on-grid mount 9/16" x 5/16" (slot tee & tegular tile)		96	96"
A5 T-grid 24" span mount (non tegular tile only)			144	144"

\*Please refer to exclusions.



# Chopstick Suspended

Clean, minimalist design with **big performance** and **optimal energy-efficiency** for mainstream architectural applications



## Why choose Chopstick Suspended?

- Small size with big lighting performance and a price point that makes it ideal for use in many different types of spaces
- Up to 108lm/W efficacy
- Wide lateral distribution in the upper hemisphere enabling wider row spacing
- MesoOptics and Light Guide panel producing optimal batwing distribution



## Ordering guide

Family	Version	Type	Source	CRI/CCT
75 Chopstick	0 Suspended	5 Indirect/Direct	L LED	A CRI 80, 4000K B CRI 80, 3500K C CRI 80, 3000K
Lumens	Optics	Distribution	Run Length	
A 6500lm/4ft C 4800lm/4ft E 3400lm/4ft	Q MesoOptics lens	N Lightguide (88% up)	04 4ft 06 6ft 08 8ft XX Continuous run >4ft in 2ft increments (please specify length)	
Circuit/Wiring Option	Voltage	Driver	Finish	
7 Single circuit N Single circuit + Battery pack M Single circuit + Auxiliary wiring	D UNV 120-277V 3 347V	E Advance Xitanium 0-10V (1% Dim)	W Standard white T Titanium silver B Black	
Mount Type			Suspension	
A1 Non-accessible ceiling, 0°-15° slope mount A2 T-grid fixed position mount A3 Non-accessible ceiling, 0°-90° slope mount A5 T-grid 24" span mount (non tegular tile only)	A6-1 T-grid on-grid mount 15/16" (non tegular tile only) A6-2 T-grid on-grid mount 9/16" (non tegular tile only) A6-3 T-grid on-grid mount 9/16" x 5/16" (slot tee & tegular tile)		24 24" 48 48" 96 96" 144 144"	

\*Please refer to exclusions.





# Jump Suspended

**Aesthetic design** elements and **playful patterns** with multiple distributions in seamless continuum of luminance.



## Why choose Jump Suspended?

- Highly flexible choice for functional environments
- Contemporary aesthetic combines the latest lighting technologies with texture, pattern, and rhythm
- Maximum control, performance and energy savings
- Three sophisticated aesthetic styles: SplashPerf, PixelPerf and SolidSide

## Ordering guide

Family	Version	Distribution	Source	CRI/CCT
12 Jump	0 Suspended	1 Direct	L LED	A CRI 80, 4000K B CRI 80, 3500K C CRI 80, 3000K
Lumens	Optics	Housing	Run Length	
C 4900lm/4ft E 3600lm/4ft G 2400lm/4ft	Q Ribbed MesoOptics lens	E SolidSide P PixelPerf S SplashPerf	04 4ft 08 8ft XX Continuous run in 4ft increments (please specify length)	
Circuit/Wiring Option	Voltage	Driver	Finish	
7 Single circuit N Single circuit + Battery pack M Single circuit + Auxiliary wiring	D UNV 120-277V 3 347V	E Advance Xitanium 0-10V (1% Dim)	W Standard white T Titanium silver B Black	
Mount Type				Suspension
A1 Non-accessible ceiling, 0°-15° slope mount	A6-1 T-grid on-grid mount 15/16" (non tegular tile only)	24 24"		
A2 T-grid fixed position mount	A6-2 T-grid on-grid mount 9/16" (non tegular tile only)	48 48"		
A3 Non-accessible ceiling, 0°-90° slope mount	A6-3 T-grid on-grid mount 9/16" x 5/16" (slot tee & tegular tile)	96 96"		
A5 T-grid 24" span mount (non tegular tile only)		144 144"		

\*Please refer to exclusions.



# Sona Suspended

Incredible efficacy & boundless lighting choices ensure Sona LED linear is destined to become a **future classic**



## Why choose Sona Suspended?

- Flexible optical design for a myriad of tasks within each space
- Budget friendly
- Flexible up/down distributions and tailored LED optics – the right light for every task



## Ordering guide

Family	Version	Type	Source	CRI/CCT
77 Sona	0 One light engine - upper	3 Indirect	L LED	A CRI 80, 4000K
		5 Indirect/Direct		B CRI 80, 3500K
	1 One light engine - lower	1 Direct		C CRI 80, 3000K
Lumens	Optics & Distribution		Run Length	Circuit/Wiring Option
C 4900lm/4ft	NA Solid housing/Acrylic diffuser (100% up)		04 4ft	7 Single circuit
E 3400lm/4ft			08 8ft	N Single circuit + Battery pack
B 6100lm/4ft	AA Acrylic diffuser (70% up)		XX Continuous run in 4ft increments (please specify length)	M Single circuit + Auxiliary wiring
C 4500lm/4ft	VD White louvers + 50 % down kit			
E 3100lm/4ft				
C 4500lm/4ft	AN Acrylic diffuser/Solid housing (100% down)			
E 3200lm/4ft	VG White louvers/Acrylic diffuser (75-80% down)			
G 2100lm/4ft				
Voltage	Driver		Finish	Option
D UNV 120-277V	E Advance Xitanium 0-10V (1% Dim)		W Standard white	N None
3 347V			T Titanium silver	
			B Black	
System/Controls	Mount Type			Suspension
NN None	A1 Non-accessible ceiling, 0°-15° slope mount	A6-1	T-grid on-grid mount 15/16" (non tegular tile only)	24 24"
	A2 T-grid fixed position mount			48 48"
	A3 Non-accessible ceiling, 0°-90° slope mount	A6-2	T-grid on-grid mount 9/16" (non tegular tile only)	96 96"
	A5 T-grid 24" span mount (non tegular tile only)	A6-3	T-grid on-grid mount 9/16" x 5/16" (slot tee & tegular tile)	144 144"

\*Please refer to exclusions.



interact  
ready.







# FloatPlane Suspended

**Coast-to-coast style** that your budget will love



## Why choose FloatPlane Suspended?

- Sleek and low profile design of only 1.2" h x 8" w
- Compelling performance of up to 129 LPW
- Fresh and playful, with Curve and Edge profile options
- Multiple lumen package and color temperature options
- Affordable performance for your budget

## Ordering guide

Family	Version	Type	Source	CRI/CCT
24 FloatPlane	G Edge suspended R Curve suspended	5 Indirect/Direct	L LED	A 80CRI, 4000K B 80CRI, 3500K C 80CRI, 3000K
Lumens	Optics	Distribution	Run Length	Circuit/Wiring Option
A 7500lm/4ft B 6000lm/4ft C 4500lm/4ft E 3200lm/4ft	A Acrylic diffuser	A Acrylic diffuser (70% up) D 45% down kit G 75% down kit H 90% down kit J 100% down kit	04 4ft 06 6ft 08 8ft XX Continuous run >4ft in 2ft increments (please specify length)	7 Single circuit N Single circuit + Battery pack M Single circuit + Auxiliary wiring
Voltage	Driver	Finish	Options	System/Controls
D UNV 120-277V 3 347V	E Advance Xitanium 0-10V (1% Dim)	W Standard white T Titanium silver B Black	N None	N None
Mount Type				Suspension
A1 Non-accessible ceiling, 0°-15° slope mount		A6-1 T-grid on-grid mount 15/16" (non tegular tile only)		24 24"
A2 T-grid fixed position mount		A6-2 T-grid on-grid mount 9/16" (non tegular tile only)		48 48"
A3 Non-accessible ceiling, 0°-90° slope mount		A6-3 T-grid on-grid mount 9/16" x 5/16" (slot tee & tegular tile)		96 96"
A5 T-grid 24" span mount (non tegular tile only)				144 144"

\*Please refer to exclusions.



# SyncLine Suspended

Aimed at **budget driven** interiors, SyncLine provides a clean, modern aesthetic with the **performance** you expect from Ledalite.



## Why choose SyncLine Suspended?

- Small housing (6.75" wide x 1.5" high)
- Budget friendly
- Efficacy up to 150 lm/W
- AccuRender CRI 90+ across the CCT range
- 10+ optical configurations with wide indirect distributions



## Ordering guide

Family			Version	Distribution	Source	CRI/CCT
SL SyncLine			0 Suspended - one light engine	1 Direct	L LED	950 CRI 90, 5000K
				3 Indirect		940 CRI 90, 4000K
				6 Direct/Indirect		935 CRI 90, 3500K
			1 Suspended - two light engines	6 Direct/Indirect		930 CRI 90, 3000K
Lumens			Optics		Run Length	Voltage
One light engine	Total fixture lumens	NN D/I lumens determined by optics	AJ Acrylic Diffuser (100% Down, Max 4000 lm/4ft)		04 4ft	D UNV 120-277V 3 347V
	80 8000 lm/4ft				06 6ft	
	70 7000 lm/4ft		NA Dust Cover (100% Up, Max 7000 lm/4ft)		08 8ft	
	60 6000 lm/4ft		NB Open - No Dust Cover (100% Up, Max 7000 lm/4ft)		XX Continuous run in 2ft increments > 4ft (please specify)	
	50 5000 lm/4ft		AA Acrylic Diffuser/Dust Cover (30% Down/70% Up)			
	40 4000 lm/4ft		AB Acrylic Diffuser/Open - No Dust Cover (20% Down/80% Up)			
	30 3000 lm/4ft		AD Acrylic Diffuser/Dust Cover (50% Down/50% Up)			
	20 2000 lm/4ft		AE Acrylic Diffuser/Open - No Dust Cover (40% Down/60% Up)			
			AG Acrylic Diffuser/Dust Cover (80% Down/20% Up, Max 5000 lm/4ft)			
Driver			Circuit	Wiring Option	System/Controls	Finish
X Advance 0-10V (10% Dim)			1 Single circuit	N None	NN None	W Standard white
E Advance Xitanium 0-10V (1% Dim)				B Battery pack		B Black
				N Auxiliary wiring		
Options		Mount Type				Suspension
N None	V Variable mount housing	A1 Non-accessible ceiling, 0°-15° slope mount	A6-1 T-grid on-grid mount 15/16" (non tegular tile only)		24 24"	
		A2 T-grid fixed position mount	A6-2 T-grid on-grid mount 9/16" (non tegular tile only)		48 48"	
		A3 Non-accessible ceiling, 0°-90° slope mount	A6-3 T-grid on-grid mount 9/16" x 5/16" (slot tee & tegular tile)		96 96"	
		A5 T-grid 24" span mount (non tegular tile only)			144 144"	

\*Please refer to exclusions.







# Linear Recessed, Cove, & Perimeter









# TruGroove Recessed

Seamless 3" ribbon of light with **exceptional performance and versatility** for functional and decorative applications



## Why choose TruGroove Recessed?

- Elevated performance to a whole new level in narrow aperture recessed lighting
- Wide row spacing with fewer fixtures and less energy consumption
- Designed to integrate seamlessly with any drywall or T-grid ceiling condition
- Continuous lines of uninterrupted luminance



## Ordering guide

Family	Version	Distribution	Source	CRI/CCT
39 TruGroove	O Recessed	1 Performance symmetric	L LED	950 CRI 90, 4000K
		8 Performance asymmetric wall wash		940 CRI 90, 4000K
		0 Definition symmetric		935 CRI 90, 3500K
				930 CRI 90, 3000K
				927 CRI 90, 2700K
Lumens	Optics	Housing	Ceiling/Trim	Run Length
40 4000lm/4ft	Q Flush MesoOptics lens	S Standard	1 T-grid	02 2ft
30 3000lm/4ft	R Regressed MesoOptics lens	C Chicago Plenum	3 Drywall trimless (ceiling)	04 4ft
22 2200lm/4ft	Q Flush MesoOptics lens		4 Drywall trim	06 6ft
15 1500lm/4ft				08 8ft
				XX Continuous runs 2-20ft in 2ft increments (please specify length)
	L Flush silk lens			
	M Regressed silk lens			
Voltage	Driver	Circuit	Wiring Option	System/Controls
D UNV 120-277V	E Advance Xitanium 0-10V (1% Dim)	1 Single circuit	N None	NN None
3 347V			B Battery pack	
			E Auxiliary wiring	
Trim Finish				
W Standard white				
B Black				

\*Please refer to exclusions.





1.75"  
aperture

# TruGroove Recessed micro

Seamless 1.75" ribbon of light delivers the perfect combination of slender aesthetic and lighting control

## Why choose TruGroove Recessed micro?

- Ideal for a variety of applications
- Elevated performance to a whole new level in narrow aperture lighting
- Wide row spacing with fewer fixtures and lower energy consumption
- Continuous lines of uninterrupted luminance to 1/8"
- Exceptional uniformity and wide row spacing from a 1.75" aperture continuous line-of light

## Ordering guide

Family	Version	Distribution	Source	CRI/CCT
23 TruGroove micro	0 Recessed	1 Direct	L LED	<b>950</b> CRI 90, 4000K <b>940</b> CRI 90, 4000K <b>935</b> CRI 90, 3500K <b>930</b> CRI 90, 3000K <b>927</b> CRI 90, 2700K
Optics		Lumens (Direct)	Housing	Ceiling/Trim
Lens	Louver Cell			
<b>Q</b> Performance Symmetric Batwing Flush MesoOptics <b>W</b> Performance Asymmetric/ Wall Wash Flush MesoOptics <b>L</b> Definition Symmetric Flush Silk	NNNN	<b>NN</b> None <b>40</b> 4000 lm/4ft <b>35</b> 3500 lm/4ft <b>30</b> 3000 lm/4ft <b>25</b> 2500 lm/4ft <b>20</b> 2000 lm/4ft <b>15</b> 1500 lm/4ft <b>10</b> 1000 lm/4ft	<b>S</b> Standard <b>C</b> Chicago Plenum	<b>1</b> T-grid <b>3</b> Drywall trimless (ceiling) <b>4</b> Drywall trim
Run Length	Voltage	Driver	Circuit	Wiring Option
<b>02</b> 2ft <b>04</b> 4ft <b>06</b> 6ft <b>08</b> 8ft <b>XX</b> Continuous run 2-20ft in 2ft increments (please specify length)	<b>D</b> UNV 120-277V <b>3</b> 347V	<b>E</b> Advance Xitanium 0-10V (1% Dim)	<b>1</b> Single circuit	<b>N</b> None <b>B</b> Battery pack <b>E</b> Auxiliary wiring
System/Controls		Trim Finish		
<b>NN</b> None		<b>W</b> Standard white <b>B</b> Black		

\*Please refer to exclusions.



interact  
ready.



# TruGroove Cove

TruGroove cove offers a **highly-controlled asymmetric light throw**, evenly lighting the space and ceiling



## Why choose TruGroove Cove?

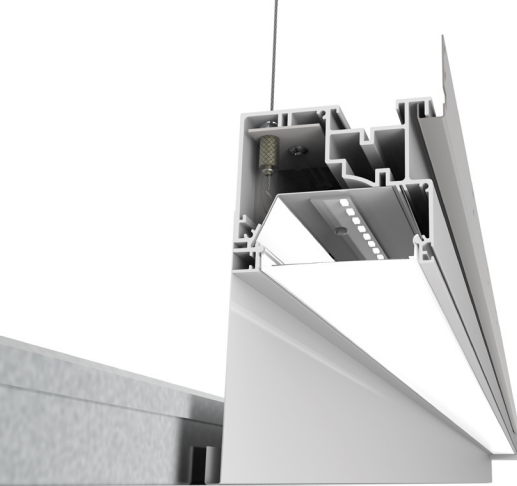
- Highly-controlled asymmetric light throw
- Single spec housing that can adjust the peak candela angle based on mounting orientation
- High performance in a smaller than 5"x2" cross-section
- Free of striations and any "socket shadow" effects
- Focus and fill optics



## Ordering guide

Family	Version	Distribution	Source	CRI/CCT
TC TruGroove	O Cove	8 Asymmetric	L LED	<b>950</b> CRI 90, 4000K <b>940</b> CRI 90, 4000K <b>935</b> CRI 90, 3500K <b>930</b> CRI 90, 3000K <b>927</b> CRI 90, 2700K
Lumens	Optics	Housing	Ceiling/Trim	Run Length
<b>60</b> 6000lm/4ft <b>50</b> 5000lm/4ft <b>40</b> 4000lm/4ft <b>30</b> 3000lm/4ft <b>25</b> 2500lm/4ft <b>20</b> 2000lm/4ft <b>15</b> 1500lm/4ft <b>10</b> 1000lm/4ft	<b>WN</b> Focus optics (micro silver) <b>LN</b> Fill optics (white reflector)	<b>S</b> Standard <b>C</b> Chicago Plenum	<b>N</b> None	<b>O2</b> 2ft <b>C2</b> 2.5ft <b>O3</b> 3ft <b>C3</b> 3.5ft <b>O4</b> 4ft <b>O5</b> 5ft <b>O6</b> 6ft <b>O8</b> 8ft <b>XX</b> Continuous runs in 6in increments (please specify length)
Voltage	Driver	Circuit	Wiring Option	System/Controls
<b>D</b> UNV 120-277V <b>3</b> 347V	<b>E</b> Advance Xitanium 0-10V (1% Dim)	<b>1</b> Single circuit	<b>N</b> None <b>B</b> Battery pack <b>E</b> Auxiliary wiring	<b>NN</b> None
Finish				
<b>N</b> Satin Coat				

\*Please refer to exclusions.



# TruGroove Perimeter

Seamless ribbon of light with **exceptional performance and versatility** for functional and decorative applications



## Why choose TruGroove Perimeter?

- Architectural recessed lighting for making a statement, or setting a mood
- Ambient provides ambient lighting that creates soft light for wayfinding
- Graze allows for making maximum impact along wall sculptures or architectural features

## Ordering guide

Family	Version		Distribution	Source	CRI/CCT
49 TruGroove	0 Perimeter		8 Ambient	L LED	950 CRI 90, 5000K
			9 Graze		940 CRI 90, 4000K
					935 CRI 90, 3500K
					930 CRI 90, 3000K
					927 CRI 90, 2700K
Lumens	Optics		Housing	Surface	Run Length
40 4000lm/4ft	Q Flush MesoOptics lens		S Standard	N All ceiling trims: endset, slot & trim* (please specify separately)	02 2ft
30 3000lm/4ft			C Chicago Plenum		04 4ft
22 2200lm/4ft					06 6ft
15 1500lm/4ft					08 8ft
	P Reverse parabolic optic w/ flush lens				XX Continuous run 2-20ft in 2ft increments (please specify length)
Voltage	Driver		Circuit	Wiring Option	System/Controls
D UNV 120-277V	E Advance Xitanium 0-10V (1% Dim)		1 Single circuit	N None	NN None
3 347V				B Battery pack	
				E Auxiliary wiring	
Finish	Endset (left)	Endset (right)	Slot height	Slot panel	Ceiling/Trim
W Standard white	C Variable/Wall	C Variable/Wall	2 1.75"	S Standard solid	1 T-grid
	S Fixed/Pocket	S Fixed/Pocket	4 4"		3 Drywall trimless
					4 Drywall trim
B Black			4 4"	A Air return	1 T-grid

\*Please refer to exclusions.













# Discrete Recessed & Suspended



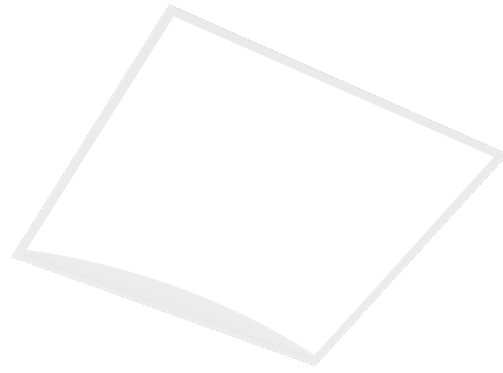






# ArcForm Duo

Inspired by the classic curve, **ArcForm Duo's refreshed innovative design** provides two optical distributions with an exceptional MesoOptics lens or a value driven Silk lens.



## Why choose ArcForm Duo?

- Flawless lens aesthetic with premium metal features.
- Superior efficacy and beam distributions to support low power densities.
- Two optical options: Patented MesoOptics nanotechnology delivering a batwing distribution, or a value driven Silk lens.
- Multiple lumen packages and color temperatures provides the right light for your space.

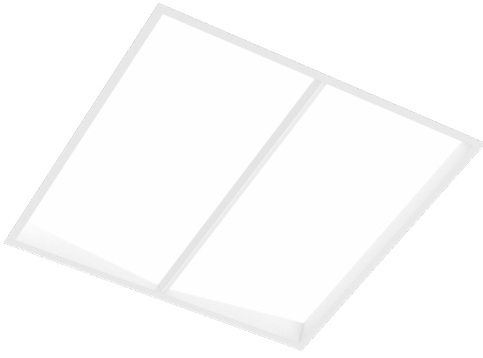


## Ordering guide

Family		Size	Version	Configuration	Source
AF	ArcForm Duo	22 2'x2'	D1 Standard & Slot T-Grid	ST Standalone	L LED
		14 1'x4'	C1 Standard & Slot T-Grid + Chicago Plenum		
		24 2'x4'			
CRI/CCT		Lumens	Optics	Circuit/Wiring Option	
940	CRI 90, 4000K	50 5000lm	A Silk - Lambertian Q MesoOptics - Batwing	1	1 Circuit
935	CRI 90, 3500K	45 4500lm		B	1 Circuit + Battery Pack
930	CRI 90, 3000K	40 4000lm			
		35 3500lm			
		30 3000lm			
		25 2500lm			
		20 2000lm			
		80 8000lm			
		75 7500lm			
		70 7000lm			
		65 6500lm			
		60 6000lm			
		55 5500lm			
		50 5000lm			
		45 4500lm			
		40 4000lm			
Voltage		Driver (Dim %)	Option		
D	UNV 120-277V	E Advance Xitanium 0-10V (1% Dim)	N	None	
3	347V		P	Factory Installed Flex Whip (6-wire, 6')	

\*Please refer to exclusions.





# Pique Duo

With a subtle shape and depth to pique your interest, Pique Duo provides two optical distributions with an exceptional MesoOptics lens or a value driven Silk lens.



## Why choose Pique Duo?

- Flawless lens aesthetic with premium metal features.
- Superior efficacy and beam distributions to support low power densities.
- Two optical options: Patented MesoOptics nanotechnology delivering a batwing distribution, or a value driven Silk lens.
- Multiple lumen packages and color temperatures provides the right light for your space.

## Ordering guide

Family	Size	Version	Configuration	Source
PQ Pique Duo	22 2'x2'	D1 Standard & Slot T-Grid	ST Standalone	L LED
	14 1'x4'	C1 Standard & Slot T-Grid + Chicago Plenum		
	24 2'x4'			
CRI/CCT	Lumens	Optics	Circuit/Wiring Option	
940 CRI 90, 4000K	50 5000lm	A Silk - Lambertian Q MesoOptics - Batwing	1 1 Circuit	B 1 Circuit + Battery Pack
935 CRI 90, 3500K	45 4500lm			
930 CRI 90, 3000K	40 4000lm			
	35 3500lm			
	30 3000lm			
	25 2500lm			
	20 2000lm			
	80 8000lm			
	75 7500lm			
	70 7000lm			
	65 6500lm			
	60 6000lm			
	55 5500lm			
	50 5000lm			
	45 4500lm			
	40 4000lm			
Voltage	Driver (Dim %)	Option		
D UNV 120-277V	E Advance Xitanium 0-10V (1% Dim)	N None		
3 347V		P Factory Installed Flex Whip (6-wire, 6')		

\*Please refer to exclusions.



interact  
ready.





# SilkSpace definition

Minimalist, modern good looks  
that's perfect for your tight  
budget projects



## Why choose SilkSpace definition?

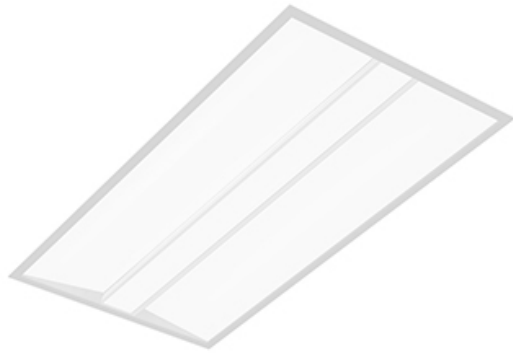
- High efficiency with a fully luminous optic, minimizing harsh shadows
- Wide range of fixture sizes
- Multiple lumen packages and color temperatures to meet any specification
- Fully accessible LEDs and driver from below the ceiling



## Ordering guide

Family	Size	Version	Configuration	Source
42 SilkSpace definition	14 1' x 4'	D1 Standard T-Grid	ST Standalone	L LED
	22 2' x 2'	C1 Standard T-Grid + Chicago Plenum		
	24 2' x 4'			
CRI/CCT	Lumens	Optics	Circuit/Wiring Option	
950 CRI 90, 5000K	50 5000lm	A Acrylic Silk Lens	1 1 Circuit	
940 CRI 90, 4000K	45 4500lm		B 1 Circuit + Battery pack	
935 CRI 90, 3500K	40 4000lm			
930 CRI 90, 3000K	35 3500lm			
927 CRI 90, 2700K	30 3000lm			
	25 2500lm			
	80 8000lm			
	75 7500lm			
	70 7000lm			
	65 6500lm			
	60 6000lm			
	55 5500lm			
	50 5000lm			
	45 4500lm			
40 4000lm				
Voltage	Driver	Option		
D UNV 120-277V 3 347V	E Advance Xitanium 0-10V (1% Dim)	N None		

\*Please refer to exclusions.



# Shine

A family of uniformly luminous fixtures combines Ledalite **quality** and **value**



## Why choose Shine?

- High efficiency with a fully luminous optic, minimizing harsh shadows
- Wide range of fixture sizes
- Multiple lumen packages and color temperatures to meet any specification
- Fully accessible LEDs and driver from below the ceiling

## Ordering guide

Family	Size	Version	Configuration	Source
33 Shine	14 1' x 4'	D1 Standard T-Grid	ST Standalone	L LED
	22 2' x 2'	C1 Standard T-Grid + Chicago Plenum		
	24 2' x 4'			
CRI/CCT	Lumens	Optics	Circuit/Wiring Option	
950 CRI 90, 5000K	50 5000lm	A Acrylic silk lens	1 1 Circuit B 1 Circuit + Battery pack	
940 CRI 90, 4000K	45 4500lm			
935 CRI 90, 3500K	40 4000lm			
930 CRI 90, 3000K	35 3500lm			
927 CRI 90, 2700K	30 3000lm			
	25 2500lm			
	80 8000lm			
	75 7500lm			
	70 7000lm			
	65 6500lm			
	60 6000lm			
	55 5500lm			
	50 5000lm			
	45 4500lm			
	40 4000lm			
Voltage	Driver	Option		
D UNV 120-277V 3 347V	E Advance Xitanium 0-10V (1% Dim)	N None		

\*Please refer to exclusions.



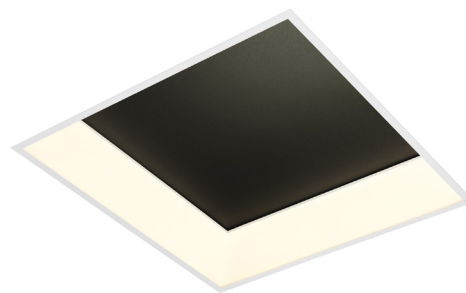
interact  
ready.





# DecoForm Recessed

Create unique aesthetics and patterns in your space with a near unlimited number of Top Tile possibilities and product orientations without sacrificing functional lighting.



## Why choose DecoForm?

- Fully modular Top Tile
- Standard AccuRender CRI 90+ LEDs
- Integral controls are hidden from view
- Discrete Recessed and Suspended versions
- Pair with Acoustics, Acrylics, and Metal Top Tiles from Ledalite, use the existing T-Grid ceiling tiles for a simple solution that adds depth to your space or bring-your-own-tile for unlimited design options
- Accepts Top Tiles of 20-1/2" and 23-3/4" sizes



## Ordering guide

Family	Size	Version	Configuration	Source
DF DecoForm	22 2' x 2'	D1 Standard T-Grid C1 Standard T-Grid + Chicago Plenum P1 Suspended	ST Standalone	L LED
CRI/CCT	Lumens	Optics	Wiring	
940 CRI 90, 4000K	60 6000lm	A Acrylic Silk Lens	1 1 Circuit	
935 CRI 90, 3500K	55 5500lm		B 1 Circuit + Battery pack	
930 CRI 90, 3000K	50 5000lm			
	45 4500lm			
	40 4000lm			
	35 3500lm			
	30 3000lm			
	25 2500lm			
	20 2000lm			
	15 1500lm			
Voltage	Driver	Option	Integral Sensors	
D UNV 120-277V 3	E Advance Xitanium 0-10V (1% Dim)	N None P Factory Installed Flex Whip (6-wire, 6' - for Recessed (D1/C1) only)	NN	No integral sensor

\*Please refer to exclusions.

See Top Tile options on the next page.





## DecoForm Suspended

Create unique aesthetics and patterns in your space with a near unlimited number of Top Tile possibilities and product orientations without sacrificing functional lighting.



### Ordering guide, continued (suspended only)

Outer Finish		Mount Type	Ceiling Type	Length			
<b>W</b>	White	<b>A</b>	Aircraft Cable Mount	<b>1</b>	Non-accessible ceiling, 0°-15° Slope Mount	<b>24</b>	24"
<b>T</b>	Titanium Silver	<b>S</b>	Single/Monopoint Mount	<b>2</b>	T-Grid, Fixed Position Mount	<b>48</b>	48"
<b>B</b>	Black			<b>3</b>	Non-accessible ceiling, 0°-90° Slope Mount	<b>96</b>	96"
<b>G</b>	Graphite Grey			<b>5</b>	T-Grid 24" Span Mount, (non tegular tile only)	<b>144</b>	144"
				<b>6-1</b>	T-Grid On-Grid Mount 15/16", (non tegular tile only)	<b>192</b>	192"
				<b>6-2</b>	T-Grid On-Grid Mount 9/16", (non tegular tile only)	<b>240</b>	240"
				<b>6-3</b>	T-Grid On-Grid Mount 9/16" x 5/16". (slot tee & tegular tile)		

### QuickShip eligible Top Tiles (ordered separately, for both recessed and suspended)

Catalog Code	Description
<b>DFT0401</b>	DecoForm Tile Metal White
<b>DFT0402</b>	DecoForm Tile Metal Black
<b>DFT0403</b>	DecoForm Tile Metal Titanium Silver
<b>DFT0404</b>	DecoForm Tile Metal Graphite Gray
<b>DFT01CVR</b>	DecoForm Tile Acoustic Cover Only
<b>DFT02CVR</b>	DecoForm Tile Acrylic Cover Only







© 2025 Signify Holding. All rights reserved. The information provided herein is subject to change, without notice. Signify does not give any representation or warranty as to the accuracy or completeness of the information included herein and shall not be liable for any action in reliance thereon. The information presented in this document is not intended as any commercial offer and does not form part of any quotation or contract, unless otherwise agreed by Signify.

Signify North America Corporation  
400 Crossing Blvd, Suite 600  
Bridgewater, NJ 08807  
Telephone: 800-555-0050

Signify Canada Ltd.  
281 Hillmount Road,  
Markham, ON, Canada L6C 2S3  
Telephone: 800-668-9008

All trademarks are owned by Signify Holding or their respective owners.