



“Configurability
enables flexibility
and differentiation”

1 **Table of contents**

1 Table of contents2

2 Introduction.....3

3 Software Installation.....4

4 Hardware Installation..... 10

5 Copyright..... 11

6 Disclaimer 12

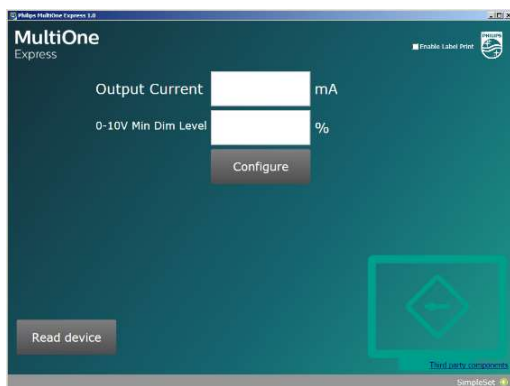
7 Limitations of damages..... 13

2 Introduction

The MultiOne Express system is a self-contained windows-based system which can be used to manually and quickly configure SimpleSet drivers without the need of feature file.

MultiOne Express supports Adjustable Output Current and Minimum Dim Level configurability, and Label Print capabilities.

System Components:



MultiOne Express Application



SimpleSet Tool



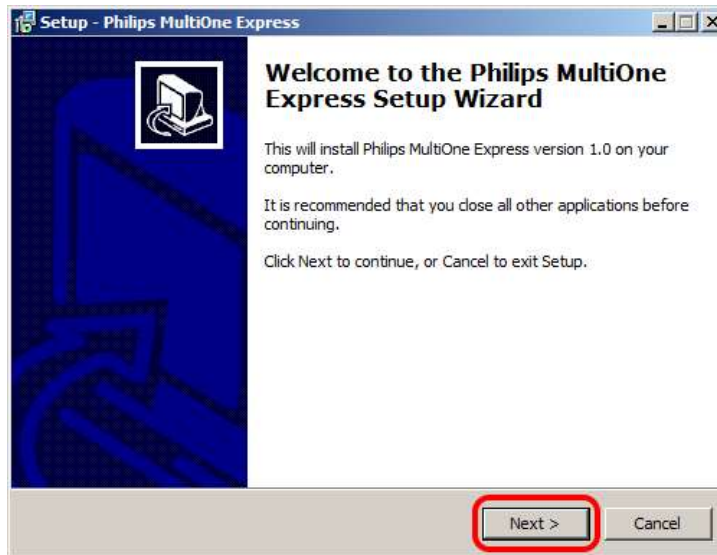
SimpleSet Driver



Optional Label Printer

3 Software Installation

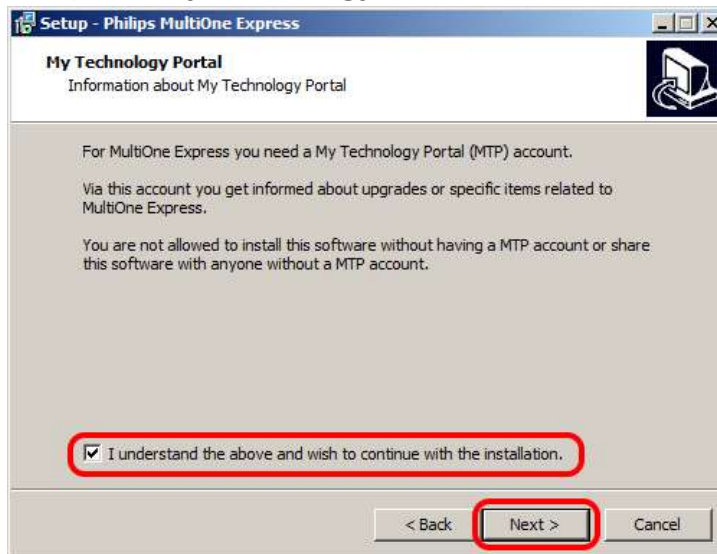
1. Launch the MultiOne Express installation process which can be found within the downloaded software package
2. Select **Next** to initiate the installation



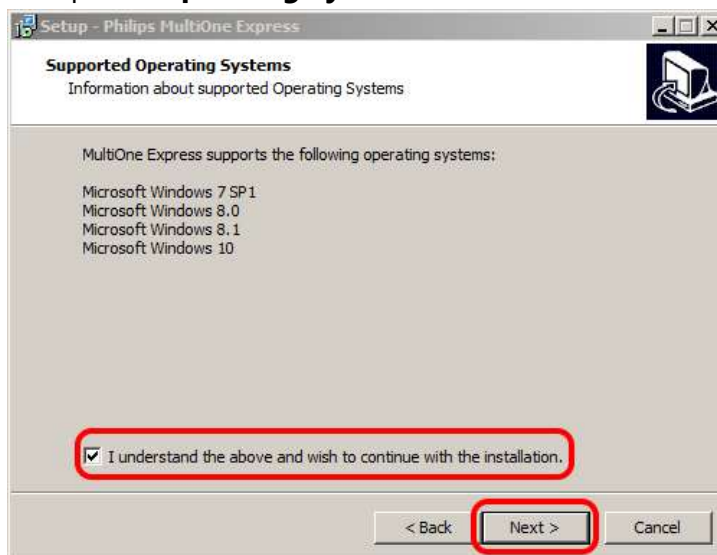
3. Accept the **License Agreement** and select **Next**



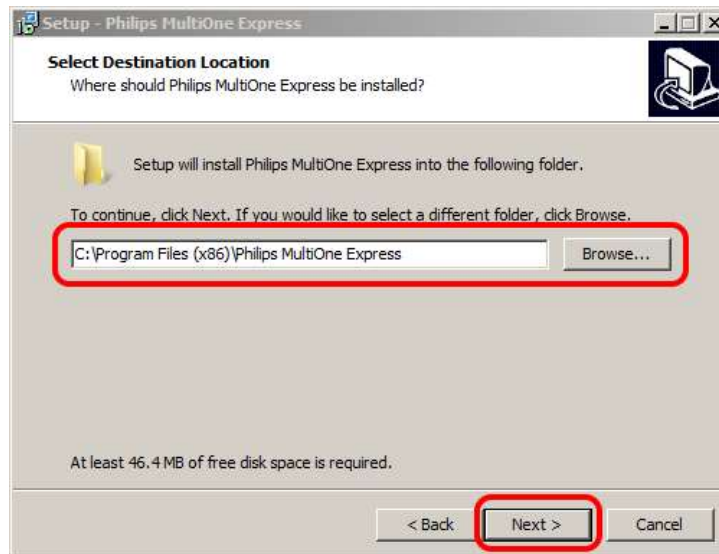
4. Accept the **My Technology Portal** terms and conditions and select **Next**



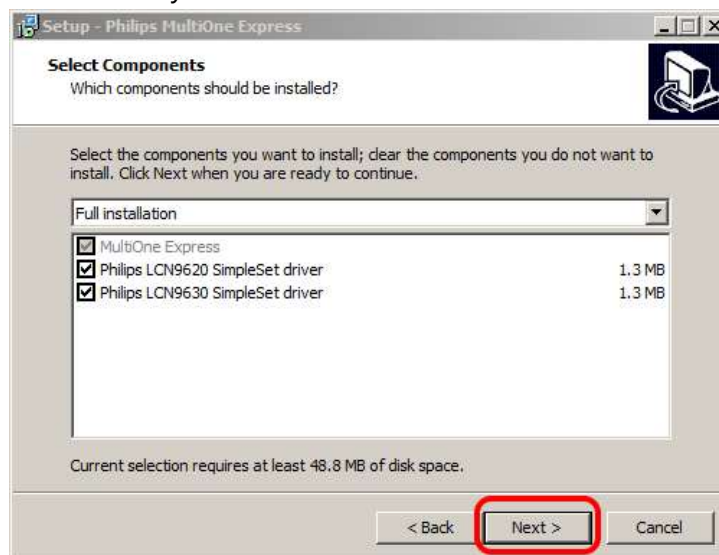
5. Accept the **Operating System** terms and conditions and select **Next**



6. Select the installation folder and select **Next**

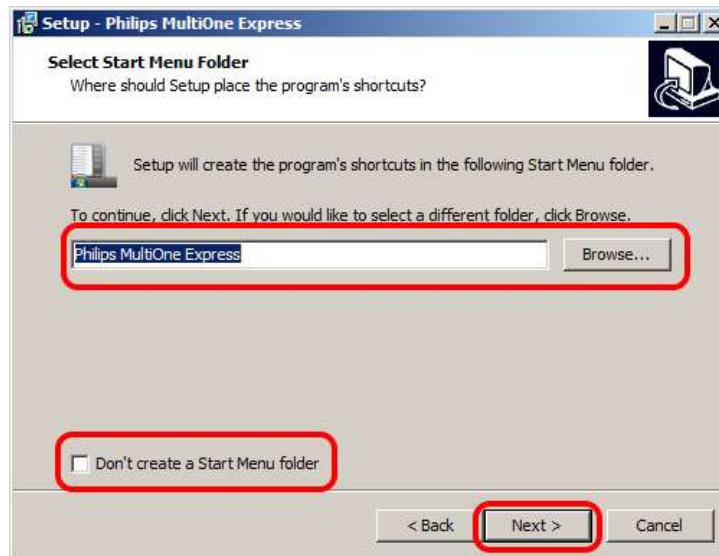


7. If not already selected, select all listed Drivers and select **Next**

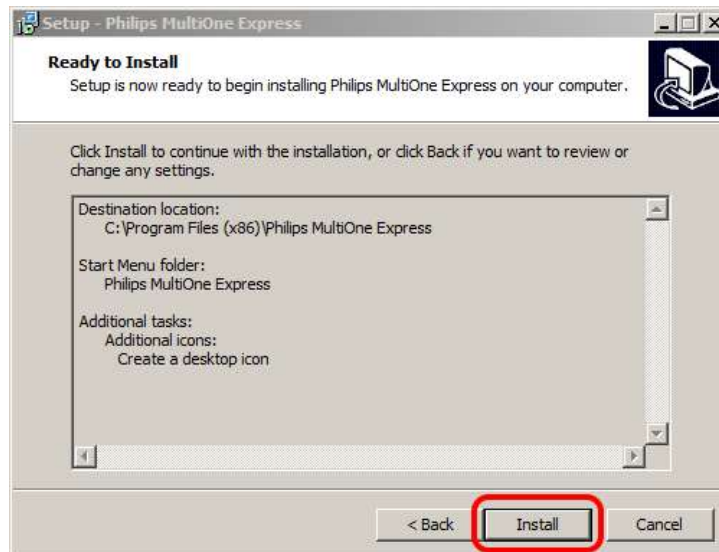


Note: MultiOne Express is selected by default

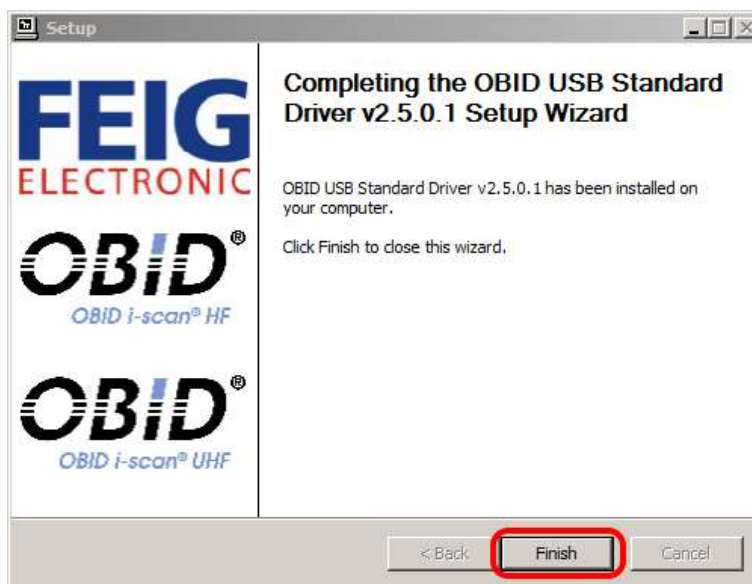
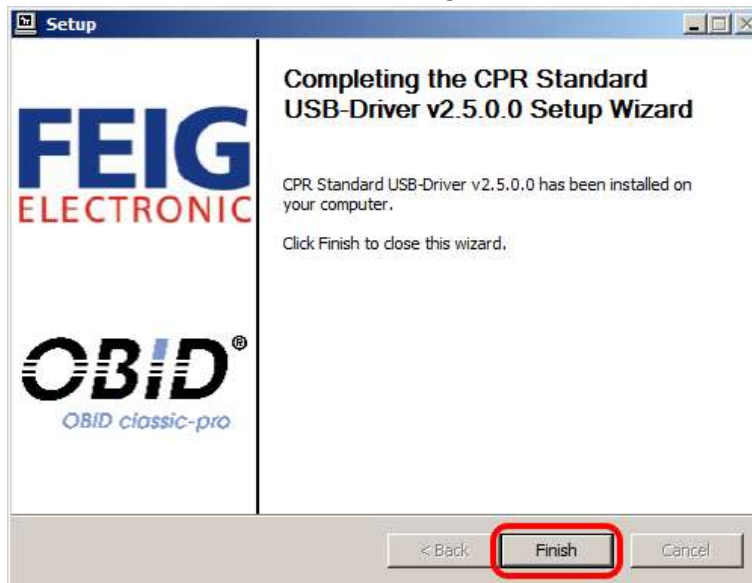
8. Select the **Start Menu Folder** and or disable the **Start Menu folder**, and select **Next**



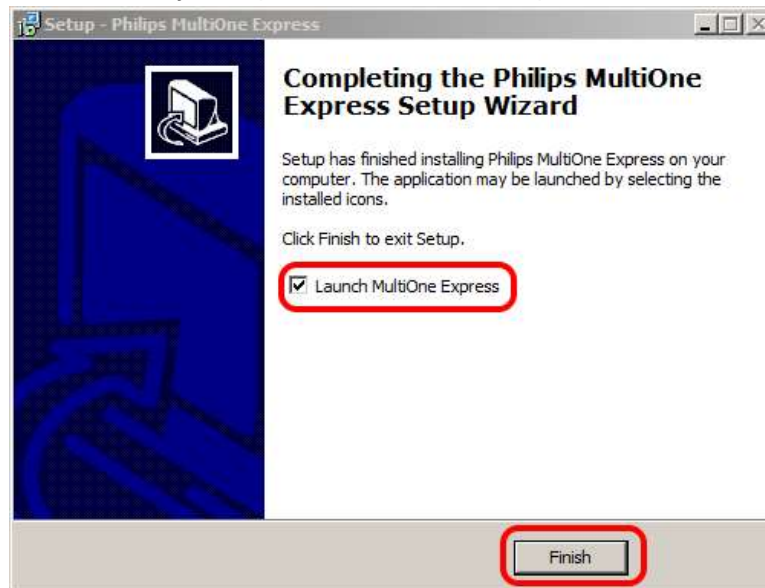
9. Select **Install**



10. Select **Finish** after the FEIG Configuration Tool drivers are installed



11. Select **Launch MultiOne Express** to launch the application directly and select **Finish** to fully complete the installation process.



4 Hardware Installation

1. Connect the Configuration Tool to the USB port



Note: When using the LCN9630 Antenna tool, the tool's DC Power Adapter must be connected

5 Copyright

Copyright © 2018 by Philips Lighting B.V.

All rights reserved. No part of this publication may be reproduced, transmitted, transcribed, stored in a retrieval system or translated into any language or computer language, in any form or by any means, electronic, mechanical, magnetic, optical, chemical, manual or otherwise, without prior written permission from Philips. Brands and product names are trademarks or registered trademarks of their respective companies.

6 Disclaimer

Philips makes no warranty of any kind with regard to this material, including, but not limited to, the implied warranties of merchantability and fitness for a particular purpose.

Philips assumes no responsibility for any error that may appear in this document.

Philips makes no commitment to update nor to keep current the information contained in this document.

7 Limitations of damages

The vendor will not be liable for any indirect, special, incidental or consequential damages (including damages for loss of business, loss of profits, or the like), whether based on breach of contract, tort (including negligence), product liability or otherwise, even if the vendor or its representatives have been advised of the possibility of such damages and even if a remedy set forth herein is found to have failed its essential purpose.