

Instruction Sheet Number **IS:FXA1B**

For Assembly and Installation of FXA1B LUMINAIRE

Read and understand these instructions before installing luminaire.

This luminaire is intended for installation in accordance with the National Electrical Code and local regulations. To assure full compliance with local codes and regulations, check with your local electrical inspector before installation. To prevent electrical shock, turn off electricity at fuse box before proceeding.

Retain these instructions for maintenance reference.

INSTRUCTIONS FOR ATTACHING A TANGENT™ LUMINAIRE TO THE TANGENT TRACK SYSTEM™ AND ACCESSORIES.

CAUTION: HOT SURFACE. Keep away from curtains and any other combustables.

CAUTION: RISK OF BURN. Allow time for luminaire to cool before touching track head for relamping or positioning.

1. Turn power off to TRACK.
2. Turn PIN on ADAPTER counter-clockwise until ADAPTER is fully open. (fig. 1)
3. Place open luminaire ADAPTER on the TRACK with the DIMPLES (fig. 3) and PIN facing same direction.
4. As LUMINAIRE is in place on the TRACK tighten pin by turning it clockwise. (fig. 2)
5. TO REMOVE turn PIN counter-clockwise until fully retracted then pull luminaire down.

NOTE: DO NOT install luminaire with transformer underneath connectors. (fig. 4)

INSTRUCTIONS FOR LAMPING FXA1B LOW VOLTAGE TANGENT™ LUMINAIRE

1. Turn power off to TRACK
2. Insert AR111 LAMP and RETAINING RING to create an assembly. (This is not mechanically fasten just a loose fit) (Fig.6)
3. Engage ARM TABS into SLOTS. (Fig. 7)
4. Push down on ARMS until back TABS are behind LAMP. (Fig. 5)
5. Take LEADS with FORK TERMINALS and align slot in FORK TERMINAL (with insulation) with the hole on the LAMP TERMINALS and fasten with screw provided. (Polarity does not apply) (Fig. 8)

NOTE: a) Use ONLY 12V AR111 Halogen G53 Base 50W MAX Lamp.

b) LAMP TERMINALS can not contact ARMS (Fig. 7)

INSTRUCTIONS FOR POSITIONING LOW VOLTAGE TANGENT™ TRACK LUMINAIRES.

1. Turn off power to TRACK allowing time for luminaire to cool.
2. Rotate HOUSING horizontally and vertically as shown in Fig. 9.

NOTE: Luminaire rotates infinite horizontally and 90° vertically. Forcing past vertical rotation stop could permanently damage luminaire.

CAUTION: DO NOT OPERATE WITH BROKEN OR WITHOUT LENS AND RETAINING RING

Dimming: Use only dimmers specified for use with electronic transformers. Low Voltage fixtures may produce audible sound when dimmed.

CAUTION: USE ONLY LAMP WATTAGE AND TYPE AS MARKED ON LUMINAIRE.

FIG. 1 OPEN POSITION

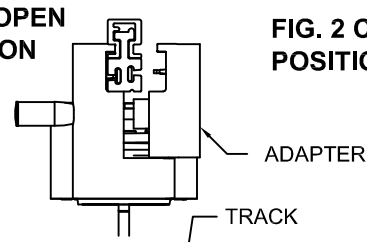


FIG. 2 CLOSED POSITION

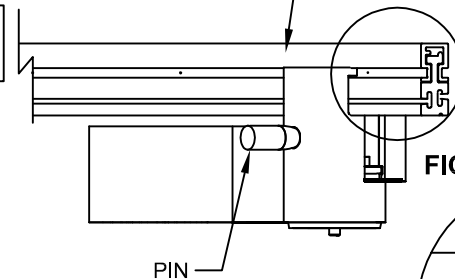
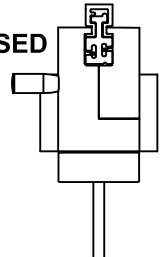
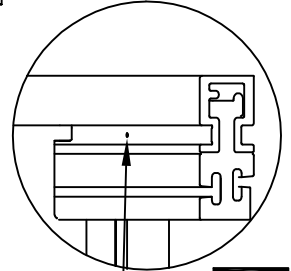
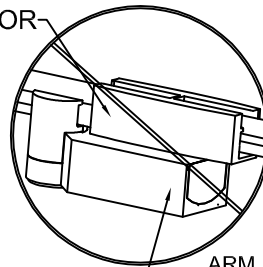


FIG. 3



CONNECTOR

FIG. 4 DO NOT POSITION



DIMPLES

BACK TAB

LAMP

FIG. 5

ARM

TAB

RETAINING RING

FIG. 7

ARM

TAB

TRANSFORMER

FIG. 6

AR111 LAMP

LENS

RETAINING RING

FIG. 8

LEADS

LAMP TERMINAL

FORK TERMINAL

FIG. 9

LEADS

LAMP TERMINAL

FORK TERMINAL

SLOT

HORIZONTAL ROTATION

VERTICAL ROTATION

FIG. 9

