

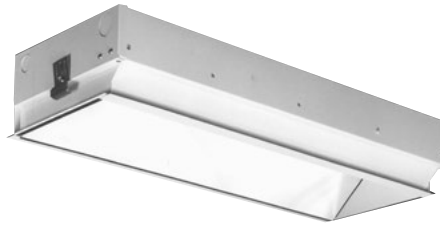
Day-Brite CFI

by Signify

Recessed

Wal-Master asymmetric

2', TT5,
semi-specular reflector



Project: _____
 Location: _____
 Cat.No: _____
 Type: _____
 Lamps: _____ Qty: _____
 Notes: _____

Day-Brite / CFI Wal-Master asymmetric is a cost effective high performance wall wash luminaire that delivers good light levels and an even wash of light. Low-iridescent semi-specular reflectors do not protrude below the ceiling line, providing a clean appearance while controlling the light output to illuminate vertical surfaces uniformly.

Ordering guide

Example: WMRL124UNV-1/1-EB

Family	Ceiling Type	Reflector	No. of Lamps	Length	Lamp Type	Voltage	Options
WM	R	L	1	2		—	
WM Wal-Master wall wash	R Recessed	L Low iridescent semi-specular aluminum	1 1 lamp	2 2'	1 18WTT5 2 24WTT5 4 40WTT5 5 50WTT5 6 55WTT5	UNV Universal Voltage, 120-277V 120 120V 277 277V 347 347V	1/1 One 1-lamp ballast EB Electronic ballast, <10% THD EB10I CF40 electronic ballast, instant start, <10% THD EBD7 Mark 7 dimming ballast, 0-10V dimming (not available for 18WTT5, 24WTT5 or 50WTT5) EBDX Mark 10 dimming ballast, phase control dimming (not available for 18WTT5 or 50WTT5) EBD Electronic dimming ballast, customer specified F1 3/8" flex, 3 wire 18 gauge 6' F2/SW 3/8" single flex, 5 wire 18 gauge 6' for dimmable luminaires GLR Fusing, fast blow RF1 RFI-1 RFI (Radio Interference) filter/suppressor(s)

Accessories (order separately)

- **WL2DF/UNV** – drywall kit



WMRL Wal-Master asymmetric

2', TT5, semi-specular reflector

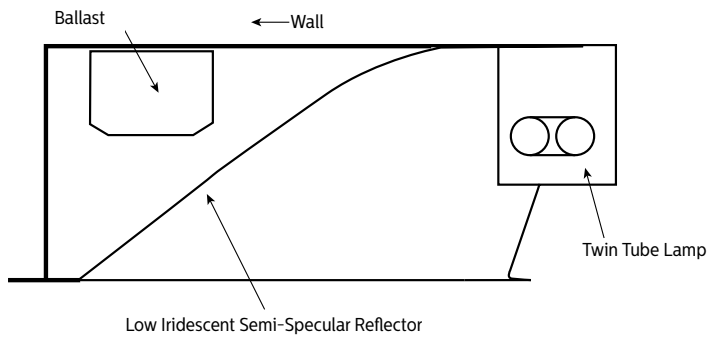
Features

- Low iridescent semi-specular reflector system for controlled light output.
- Evenly lights vertical surfaces or displays (no scallops).
- 87% energy savings vs. incandescent.
- 3150 lumen twin tube TT5 lamp (40WTT5 models) requires fewer fixtures to provide the same wall illumination as a 150W incandescent wallwasher.
- Long lamp life requires less maintenance than incandescent.
- Can be installed only 2' from wall to farthest edge of fixture.
- No edges protrude below grid ceiling systems.
- Fits all standard and narrow grid ceiling systems.
- One-piece body and adjustable hanger for easy, quick installation.
- Sides of luminaire can support tile or sit on T-bar.

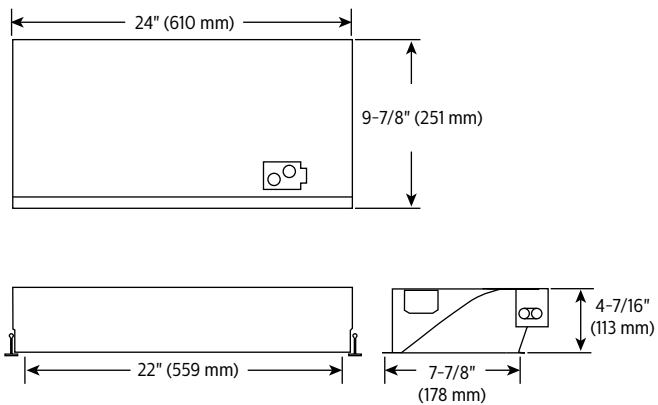
Specifications

- **Materials:** Chassis parts are die-formed code gauge cold rolled steel. Reflector— low iridescent semi-specular aluminum.
- **Finish:** Chassis exterior—white baked acrylic enamel. Phosphate undercoating. Reflector—low iridescent semi-specular.
- **Electrical:** Rapid start HPF, thermally protected class "P" ballast. If K.O. is within 3" of ballast, use wire suitable for at least 90°.
- **Labels:** cULus listed. Suitable for damp locations.

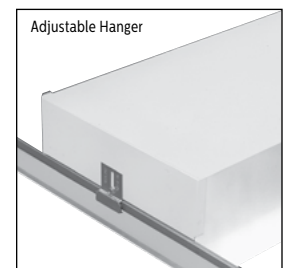
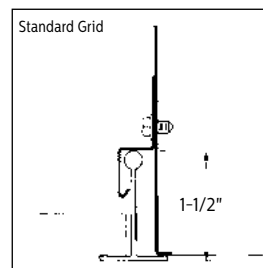
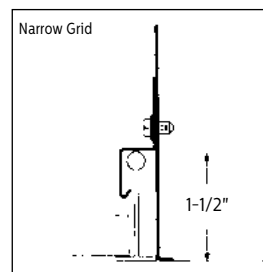
Features



Dimensions



Mounting methods



WMRL Wal-Master asymmetric

2', TT5, semi-specular reflector

Photometry

Model No. WMRL124120

LER = 44.8 IW-45.1 BF-0.99
Comparative yearly lighting energy cost per 1000 lumens = \$5.36

Report Number: G96115

Catalog Number: WMRL124120

Lamp: (1) Twin Tube TT5 40W

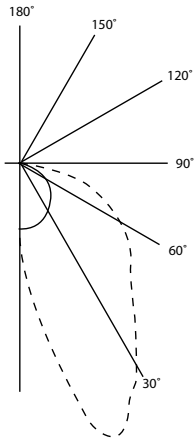
Lamp Lumens: 3150

Luminaire: 2' Wal-Master / Accent troffer

Efficiency: 64.8%

Coefficients of Utilization

Ceiling	80%			50%			30%			
Wall	70	50	30	50	30	10	50	30	10	
RCR	Zonal Cavity Method—Effective Floor Cavity Reflectance = 0.20									
Room Cavity Ratio	1	70	67	65	63	61	59	61	59	57
	2	64	59	54	55	52	49	53	50	48
	3	58	51	46	48	44	41	47	43	40
	4	53	45	40	43	38	35	41	37	34
	5	49	41	35	38	34	30	37	33	29
	6	45	36	31	35	30	26	34	29	26
	7	42	33	27	31	27	23	30	26	23
	8	39	30	24	29	24	20	28	23	20
	9	36	27	22	26	22	18	26	21	18
	10	34	25	20	24	20	17	24	19	16



Footcandles on Wall Fixtures 3 Feet from Wall to Outside Trim on Lamp Side of Fixture

	Individual WalMaster								Multiple Units								Continuous Row												
	0'	1'	2'	3'	4'	5'	6'	7'	4'				6'				0'	1'	2'	3'	4'	5'	6'	7'	8'				
Ceiling																													
8'	52	41	24	13	8	6	5	4	71	64	56	64	71	61	51	35	29	35	51	61	119	122	123	124	124	124	123	122	119
7'	56	48	32	19	12	8	6	5	83	79	74	79	83	66	60	47	41	47	60	66	144	149	152	153	153	153	152	149	144
6'	43	39	29	19	13	9	7	5	72	70	69	70	72	54	51	45	41	45	51	54	125	131	134	136	136	136	134	131	125
5'	32	30	24	18	13	9	7	6	60	60	60	60	60	44	42	40	38	40	42	44	105	109	113	114	115	114	113	109	105
4'	24	23	20	15	12	9	7	6	50	50	50	50	50	35	34	35	33	34	34	35	86	91	94	95	96	95	94	91	86
3'	19	18	16	11	11	9	7	6	41	41	41	41	41	28	28	28	28	28	28	28	71	74	77	78	78	78	77	74	71
2'	15	14	13	11	9	8	7	6	34	34	34	34	34	24	24	24	24	24	24	24	58	61	63	64	65	64	63	61	58
1'	12	12	11	10	8	7	7	6	28	28	28	28	28	20	20	20	20	20	20	20	47	50	51	52	52	52	51	50	47
Floor																													



Some luminaires use fluorescent or high intensity discharge (HID) lamps that contain small amounts of mercury. Such lamps are labeled, "Contain Mercury" and/or the symbol "HG". Lamps that contain mercury must be disposed of in accordance with local requirements. Information regarding lamp recycling and disposal can be found at www.lamprecycle.org

