

INSTALLATION INSTRUCTIONS "LR23" REFLECTOR

CAUTION: THE INSTALLATION AND SERVICING OF THIS PRODUCT SHOULD BE PERFORMED BY A QUALIFIED ELECTRICIAN OR SERVICE PERSONNEL
ATTENTION : L'INSTALLATION ET L'ENTRETIEN DE CE PRODUIT DOIVENT ÊTRE EFFECTUÉS PAR UN ÉLECTRICIEN OU UN MEMBRE DU PERSONNEL QUALIFIÉ.

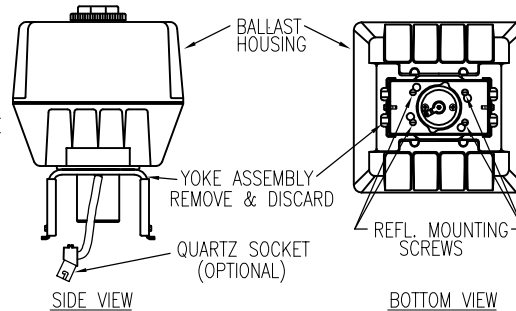
WARNING: ELECTRICAL SHOCK POTENTIAL !!

CAUTION:

BALLAST HOUSING – "HBO" OR "EHO"

NOTE: "HBO" BALLAST HOUSING SHOWN, INSTRUCTIONS WILL BE IDENTICAL FOR "EHO" BALLAST HOUSING

- 1) REMOVE YOKE ASSEMBLY BY LOOSENING (DO NOT REMOVE) THE (4) REFLECTOR MOUNTING SCREWS AND ROTATING YOKE ASSEMBLY OVER KEYHOLES UNTIL IT SLIDES OVER SOCKET.
- 2) DISCARD YOKE ASSEMBLY
- 3) MOUNT BALLAST HOUSING SECURELY AS REQUIRED. SEE INSTRUCTIONS PACKED WITH BALLAST HOUSING



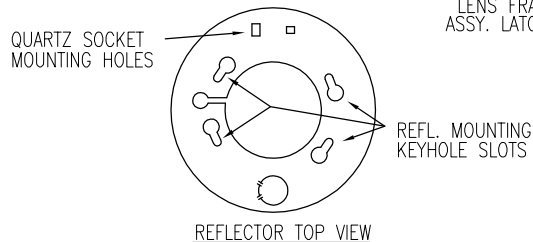
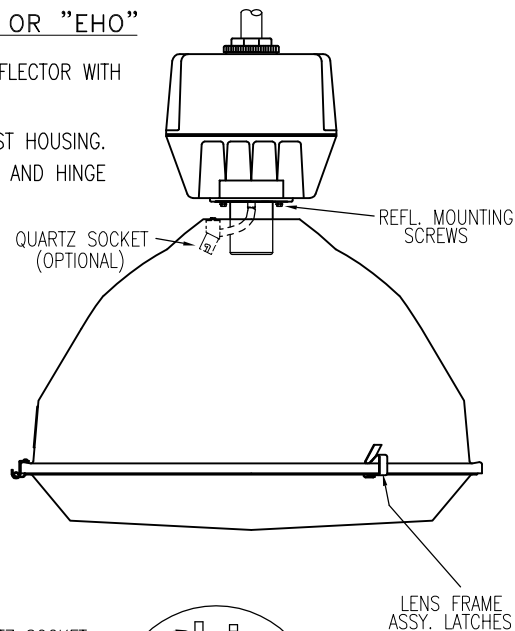
REFLECTOR MOUNTING, LR23 WITH "HBO" OR "EHO"

NOTE: REFLECTOR MOUNTING SHOWN WITH "HBO" HOUSING, REFLECTOR WITH "EHO" HOUSING WILL ASSEMBLE IN IDENTICAL FASHION.

- 1) LOOSEN THE (4) REFLECTOR MOUNTING SCREWS ON BALLAST HOUSING.
- 2) OPEN THE LENS FRAME ASSEMBLY LATCHES ON REFLECTOR AND HINGE LENS OPEN.
- 3) ATTACH REFLECTOR TO BALLAST HOUSING AT KEY-HOLE SLOTS AND TIGHTEN SCREWS.

NOTE: IF UNIT IS EQUIPPED WITH OPTIONAL QUARTZ SOCKET ATTACH QUARTZ SOCKET AS DESCRIBED BELOW, THEN TIGHTEN REFLECTOR MOUNTING SCREWS

- 4) CLOSE LENS AND FASTEN LATCHES.



OPTIONAL QUARTZ MOUNTING

THE QUARTZ SOCKET IS EQUIPPED WITH A SPRING STEEL BRACKET. ROUTE SOCKET THRU CENTER HOLE OF REFLECTOR AND SNAP QUARTZ SOCKET BRACKET INTO THE SMALL SQUARE HOLES IN REFLECTOR

CAUTION: Electrical luminaires are designed for permanent installation in ordinary (Non-Hazardous) locations in accordance with the National Electrical Code and all applicable local codes. Do not use in areas of limited ventilation or in high ambient enclosures. The lamp and luminaire operate at high temperatures, contact with combustible materials can cause fire and personal contact can cause severe burns.

ATTENTION: Ce luminaire a été conçu pour une installation permanente dans un emplacement régulier (non dangereux) et en conformité avec le Code électrique canadien et codes locaux applicables. Ne jamais installer dans un endroit où la ventilation est limitée ou dans des boîtiers où la température ambiante est très élevée. La lampe et le luminaire fonctionnent à des températures élevées, un contact avec des matériaux combustibles peut engendrer un incendie et un contact corporel peut causer de sévères brûlures.

PHILIPS

Philips Lighting North
America Corporation
200 Franklin Square Drive
Somerset, NJ 08873, USA
Phone: 855-486-2216
philips.com/luminaires

Philips Lighting Canada Ltd.
281 Hillmount Road
Markham ON, Canada L6C 2S3
Phone: 800-668-9008
philips.com/luminaires

728641101 APRIL, 2013