

# Instruction Sheet Number **IS:FXPDT**

Page 1 of 2

For Assembly and Installation of FXPDT LUMINAIRE

## Read and understand these instructions before installing luminaire.

This luminaire is intended for installation in accordance with the National Electrical Code and local regulations. To assure full compliance with local codes and regulations, check with your local electrical inspector before installation. To prevent electrical shock, turn off electricity at fuse box before proceeding.

### Retain these instructions for maintenance reference.

**CAUTION: HOT SURFACE.** Keep away from curtains and any other combustables.

**CAUTION: RISK OF BURN.** Allow time for luminaire to cool before touching track head for relamping or positioning.

**CAUTION:** Use only lamp wattage and type as marked on luminaire

**NOTE: PENDANT WEIGHT MUST BE SUPPORTED BY AIRCRAFT CABLE (NOT CORD) IF CABLE IS SUPPLIED WITH PENDANT**

### PENDANTS COMPATIBLE WITH TANGENT™ ADAPTOR:

1. TOTAL WEIGHT of all components being attached to ADAPTOR must NOT exceed 2.5lbs
2. PENDANTS with CORD TYPE(S)  $\frac{1}{4}$ " diameter - 18ga. 3 Wire, 300V min. SVT, with or without .062 diameter AIRCRAFT CABLE.
3. PENDANT RATING must be 120V/60Hz, 0.83A MAX, 100W MAX

### INSTRUCTIONS FOR ATTACHING A TANGENT™ LUMINAIRE TO THE TANGENT TRACK SYSTEM AND ACCESSORIES.

#### NOTE: DO NOT USE ON WALL MOUNTED TRACK.

1. Turn power off to TRACK.
2. Turn PIN on ADAPTER counter-clockwise until ADAPTER is fully open. (fig. 1)
3. Place open luminaire ADAPTER on the TRACK with the DIMPLES (fig. 3) and PIN facing same direction.
4. As LUMINAIRE is in place on the TRACK, tighten pin by turning it clockwise. (fig. 2)
5. TO REMOVE, turn PIN counter-clockwise until fully retracted then pull luminaire down.

### INSTRUCTIONS FOR PREPARING ELECTRICAL CORD FOR INSTALLATION.

1. Cut OPEN END of ELECTRICAL CORD with wire cutters to desired length "A".
2. ELECTRICAL CORD can be longer than DIM (A) if AIRCRAFT CABLE is being used to support weight.

### INSTRUCTIONS FOR PREPARING AIRCRAFT CABLE (IF INCLUDED) FOR INSTALLATION .

1. Determine the distance "A" between PENDANT LUMINAIRE and ADAPTER that will be needed.

**NOTE: DISTANCE "A" MUST BE GREATER THAN OR EQUAL TO 6" IN LENGTH**

FIG. 1 OPEN POSITION

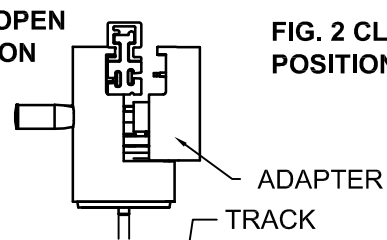


FIG. 2 CLOSED POSITION

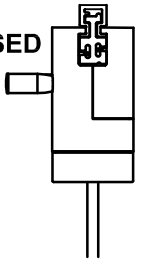


FIG. 3

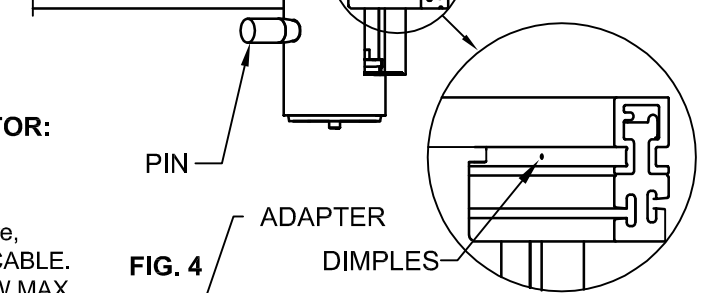


FIG. 4

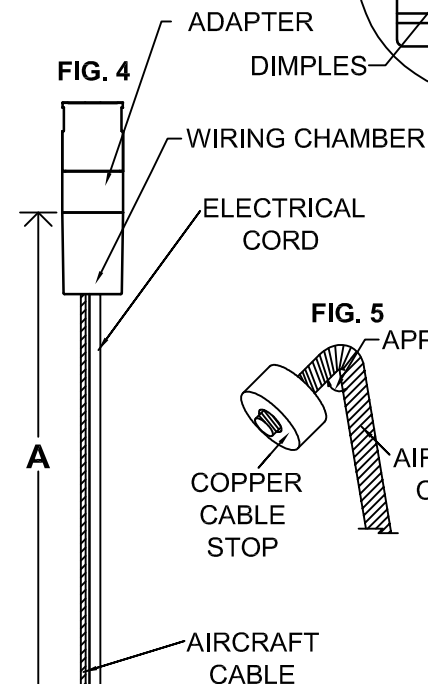


FIG. 5 APPX. 90°

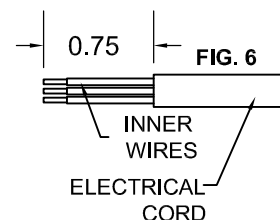
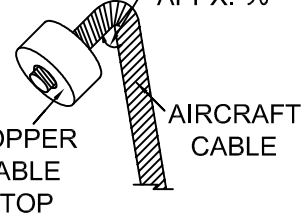


FIG. 6

# Instruction Sheet Number **IS:FXPDT**

Page 2 of 2

For Assembly and Installation of FXPDT LUMINAIRE

## Read and understand these instructions before installing luminaire.

This luminaire is intended for installation in accordance with the National Electrical Code and local regulations. To assure full compliance with local codes and regulations, check with your local electrical inspector before installation. To prevent electrical shock, turn off electricity at fuse box before proceeding.

**Retain these instructions for maintenance reference.**

### (CONTINUED FROM PAGE 1)

2. Cut the OPEN END of AIRCRAFT CABLE with metal shears to desired length "A" (fig. 4).
3. Crimp COPPER CABLE STOP to the end of the AIRCRAFT CABLE and bend cable at tip approximately 90 degrees (fig. 5).

### INSTRUCTIONS FOR ELECTRICAL CONNECTION

1. Guide the ELECTRICAL CORD and the AIRCRAFT CABLE through hole in the bottom of cylindrical WIRING CHAMBER.
2. Strip back ELECTRICAL CORD JACKET INSULATION  $\frac{3}{4}$ ", exposing 3 INNER WIRES: black (live), white (neutral), green (ground) (fig. 6).

### NOTE: DO NOT CUT THROUGH INNER WIRE INSULATION

3. Strip  $\frac{3}{8}$ " insulation from the INNER WIRES.
4. Run ELECTRICAL CORD up through STRAIN RELIEF and place STRAIN RELIEF BAR #1 on top surface.
5. While holding STRAIN RELIEF BAR #1 in place with one hand, position the prepared end of the AIRCRAFT CABLE over STRAIN RELIEF BAR #1 such that the 90 degree bend points outward. Next, place STRAIN RELIEF BAR #2 over the AIRCRAFT CABLE, and then tighten SCREWS down to secure ELECTRICAL CORD AND CABLE (fig. 7).

### NOTE: TIGHTEN STRAIN RELIEF SCREWS DOWN AS TIGHT AS POSSIBLE

### NOTE: CLAMP ELECTRICAL CORD JACKET; DO NOT CLAMP INNER WIRES DIRECTLY WITH STRAIN RELIEF BAR.

6. Take green INNER WIRE (ground wire) and wrap strands around under side of SCREW as shown. Tighten SCREW. (Fig. 8)
7. Splice the black ADAPTOR WIRE to black CORD WIRE using WIRE NUT that is supplied. Splice the white ADAPTOR WIRE to white CORD WIRE. (Fig. 8)

### NOTE: POSITION WIRENUTS AS SHOWN IN FIG. 8

8. Aligned SET SCREW HOLE on WIRING CHAMBER with INSTEP on STRAIN RELIEF as shown. (Fig. 9)
9. Tighten SET SCREW.

