

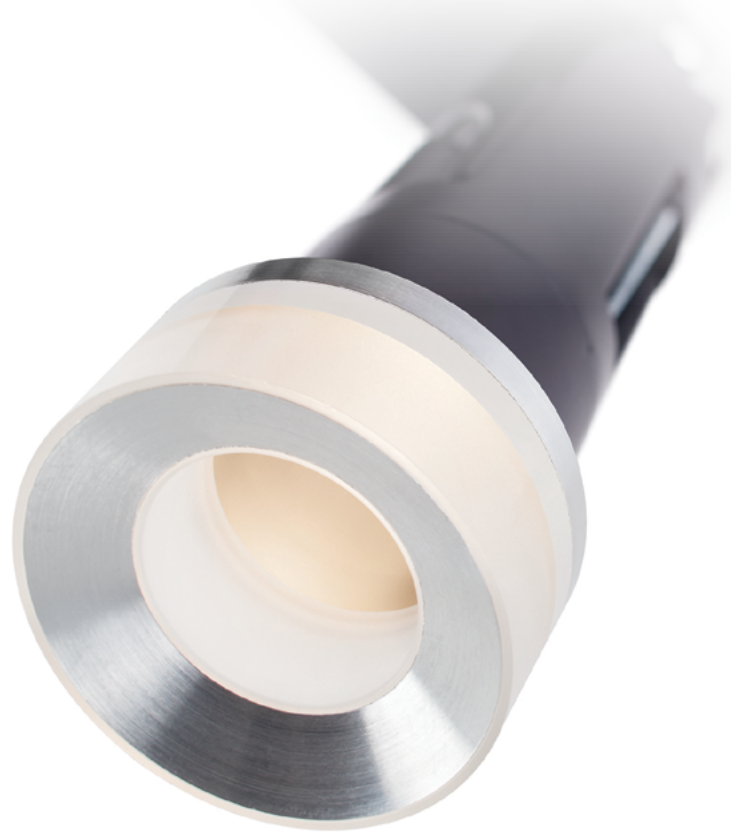
LIGHTOLIER

by  Signify

Downlighting

Calculite LED

C2L 1.75" with Micro Vetro



Designed to complement any application

Ideal small aperture specification-grade architectural recessed downlight.

Benefits

Optical performance is a key part to the Calculite story. In today's demanding visual environments, downlights must not only be functional but aesthetically pleasing. A smoother ceiling transition is desired and Calculite offers high quality trims and flange options for the most discerning of tastes and desired lighting outcomes.

- Up to 1000 lumens at up to 14W
- Decorative accessory has integral reflector
- Installation performed below ceiling, twisting and locking into pre-installed light engine
- Assembled using CCD finish (other finishes available)
- CBCP is maintained at 80% efficiency with open aperture accessory style*
- Beam angles 25°, 30°, 40° and 50° available for best look and performance

* A slight contraction of the specified beam angle occurs.

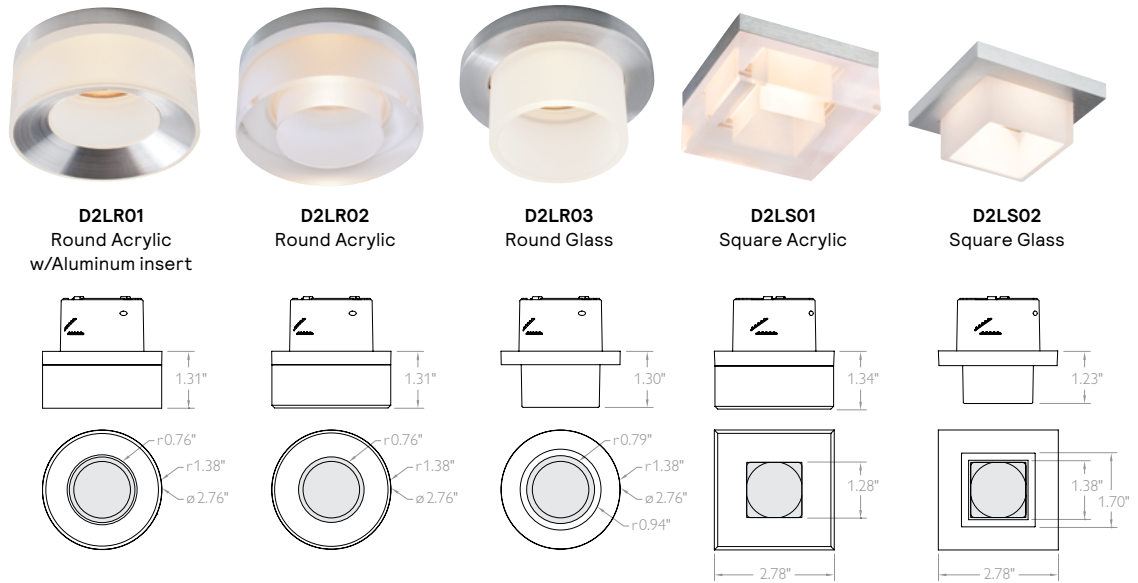


C2L Calculite LED

1.75" aperture downlight with Micro Vetro decorative element

Features

Efficacy: 36-85lm/w
Lumens: 1000
Watts: 14W
CRI: 90 (min)
CCT: 2700K - 4000K
Volts: 120V (50/60Hz)
Dimming: (see below)
Lifetime: 90,700 hrs (L90)
Labels: cULus wet location listed, Title 24 JA8 compliant, ENERGY STAR® certified.
Warranty: 5 year



Frame Complete luminaire = Frame + Trim + Accessory (optional)

example: C2L09DL927RE1

Series	Lumen	Style	CRI/CCT	Installation	Dimming/Voltage
C2L Calculite LED 1.75" for round and square trims	09 900lm	DL Downlight	927 90CRI/2700K 930 90CRI/3000K 935 90CRI/3500K 940 90CRI/4000K	R Installs below ceiling	E1 ELV with 120V Z10U 0-10V dimming with Universal 120/277V

Trim (25°, 30°, 40° and 50° beam optics included with frame)

example: C2LDLBP

Series	Lumen	CRI/CCT	Voltage
C2L Calculite LED 1.75" round	DL Downlight (50° cutoff) DLLS Downlight (75° cutoff) with linear spread lens LW Lensed wall washer ¹	BK Black (painted) CCD Comfort clear diffuse CCZ Champagne bronze WH White (painted)	P Polished (aperture-matching) FT Flush mount ²
C2X2L Calculite LED 1.75" square	DL Downlight (50° cutoff) LW Lensed wall washer ¹	BK Black (painted) WH White (painted)	P Polished (aperture-matching) FT Flush mount ²

- The 25° beam spread recommended (A).
- Requires flush-mount mud-in ring (CA2FMR or CA2X2FMR).
- Installs into standard C2L frame. Comfort clear diffuse reflector is standard. Other finishes are available. Please contact factory.
- Recommended for specific applications.

Micro Vetro decorative elements³

example: C2LR01

Series	Aperture
D2L Decorative 1.75" Micro Vetro elements	R01 Round acrylic w/aluminum insert R02 Round acrylic R03 Round glass S01 Square acrylic S02 Square glass

Install accessories⁴

C2LIC	IC frame (new construction)
C2LMP	New construction mounting pan
CA2FMR	Round flush-mount mud-in ring
CA2X2FMR	Square flush-mount mud-in ring

See specification sheet C2L for additional drawings and technical information.



Visit Signify.com/warranties for more information on Signify's standard 5-year limited warranty.

