

# Day-Brite

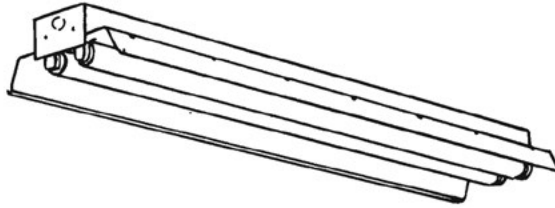
## CFI

by  Signify

### Industrial

IA all purpose

T8 or T12 high output



Project: \_\_\_\_\_  
 Location: \_\_\_\_\_  
 Cat.No: \_\_\_\_\_  
 Type: \_\_\_\_\_  
 Lamps: \_\_\_\_\_ Qty: \_\_\_\_\_  
 Notes: \_\_\_\_\_

Day-Brite / CFI all purpose industrial is an industrial luminaire available with or without upright at a economical price.

#### Ordering guide

Example: IA296HO-1/2-EB

Family	No. of Lamps per Cross Section	Lamp Type	Voltage	Options
	2	—	—	
<b>IA</b> Industrial with upright <b>IS</b> Solid Top Reflector	(not included) 2	<b>44HO</b> 44WT8 380 mA (48") <b>48HO</b> 60WT12 800 mA (48") <b>86HO</b> 86WT8 380 mA (96") <b>96HO</b> 110WT12800 mA (96")	<b>UNV</b> Universal voltage 120/277V <b>120</b> 120V <b>277</b> 277V <b>347</b> 347V	<b>1/2</b> One 2-lamp ballast <b>EB</b> Electronic ballast, <20% THD <b>E7</b> B60 emerg. ballast, 600-700 lumens, 120/277V <b>E5</b> B50 emerg. ballast, U.S. or Canada market, 1100-1400 lumens, UNV <b>ESCAN</b> B50-CAN emerg. ballast, Canada market, 1100-1400 lumens, 120/347V <b>E5ST</b> B50ST emerg. ballast w/self test, U.S. or Canada market, 1100-1400 lumens, UNV <b>GLR</b> Fusing, fast blow
				See section 1600-OA for option info. and 950-SS for mounting hardware. Power Connect modular wiring available, see sheet 1604.1-OA for details

#### Accessories (order separately)

- **CS-400** Rigid canopy
- **CS-500** 42" top swivel canopy
- **CS-12** 12" Stem
- **CS-18** 18" Stem
- **CS-24** 24" Stem
- **CS-30** 30" Stem
- **CS-36** 36" Stem
- **CS-48** 48" Stem
- **CTBH-3** T-bar sliding hanger, 1-1/2" spacing for T12HO
- **FKR-126** Chain hanger set
- **N-3381** Universal joint aligner, octagonal box, 3/4" I.P.S.
- **TH-4** Sliding hanger, 1-1/2" spacing for T12HO/VHO
- **TC-1** Heavy duty coupler
- **FKR-173** 4' Wire guard (use 2 for 8')



# IA All purpose industrial

## T8 or T12 high output

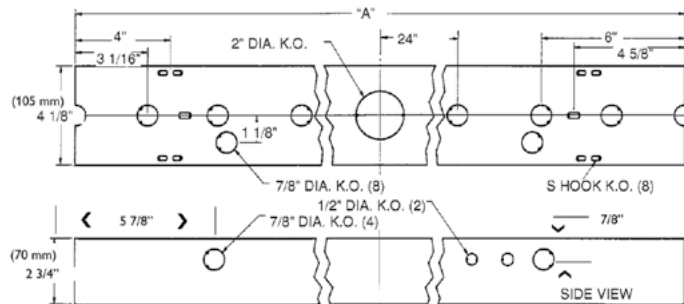
### Construction/Finish

- Reflectors feature reinforcing forms and are painted with high reflectance baked white enamel finish.
- Multiple knockouts for convenient installation.
- Heavy duty channel of code gauge die formed steel with baked white enamel finish.
- Reflectors are easily installed and have up-light construction standard. Solid top reflectors are available.
- Combination end cap/coupler requires no tools for installation.
- 1/4 turn reflector fastener requires no tools.
- Suitable for unit or row mounting.

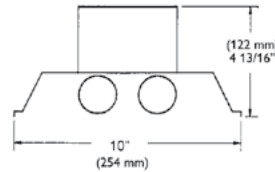
### Electrical

- cULus listed for damp locations.
- Self-contained fluorescent emergency power packs can be incorporated.
- Pressure lock lampholders secured by snap-in socket plates.
- **IMPORTANT! High Output Fixtures must be suspended with a minimum 1-1/2" clearance to ceiling.**
- Day-Brite's standard luminaires for high output T8 (380mA) and T12 (800mA) include ballasts rated for -20° F starting temperature.

### Dimensions



DIM "A"		
4' CHANNEL	(1219 mm)	48"
8' CHANNEL	(2438 mm)	96"



# IA All purpose industrial

## T8 or T12 high output

### Photometry

#### IA all purpose industrial, 8' 2 Lamp 96W T12

Efficiency – 86.9%

LER – FI-61

TER – 37

<b>Catalog No.</b> IA296HO <b>Test No.</b> 42324 <b>S/MH</b> 1.5 <b>Lamp Type</b> F96HO ES <b>Lumens/Lamp</b> 8000 <b>Ballast Factor</b> .88 <b>Input Watts</b> 201  Comparative yearly lighting energy cost per 1000 lumens – <b>\$3.93</b> based on 3000 hrs. and <b>\$.08</b> pwr KWH.  The photometric results were obtained in the Day-Brite laboratory which is NVLAP accredited by the National Institute of Standards and Technology.	<b>Candlepower</b>				<b>Light Distribution</b>				<b>Average Luminance</b>																																																																																																																													
	<table border="1"> <thead> <tr> <th>Angle</th> <th>End</th> <th>45</th> <th>Cross</th> </tr> </thead> <tbody> <tr><td>0</td><td>3575</td><td>3575</td><td>3575</td></tr> <tr><td>5</td><td>3580</td><td>3558</td><td>3637</td></tr> <tr><td>15</td><td>3472</td><td>3537</td><td>3658</td></tr> <tr><td>25</td><td>3222</td><td>3444</td><td>3658</td></tr> <tr><td>35</td><td>2878</td><td>3286</td><td>3601</td></tr> <tr><td>45</td><td>2441</td><td>3057</td><td>3436</td></tr> <tr><td>55</td><td>1897</td><td>2703</td><td>3086</td></tr> <tr><td>65</td><td>1303</td><td>2187</td><td>2277</td></tr> <tr><td>75</td><td>666</td><td>1281</td><td>1310</td></tr> <tr><td>85</td><td>150</td><td>344</td><td>351</td></tr> <tr><td>95</td><td>0</td><td>21</td><td>19</td></tr> <tr><td>105</td><td>0</td><td>108</td><td>119</td></tr> <tr><td>115</td><td>0</td><td>176</td><td>176</td></tr> <tr><td>125</td><td>0</td><td>224</td><td>244</td></tr> <tr><td>135</td><td>0</td><td>199</td><td>282</td></tr> <tr><td>145</td><td>0</td><td>85</td><td>230</td></tr> <tr><td>155</td><td>0</td><td>16</td><td>73</td></tr> <tr><td>165</td><td>0</td><td>5</td><td>10</td></tr> <tr><td>175</td><td>0</td><td>3</td><td>1</td></tr> </tbody> </table>	Angle	End	45	Cross	0	3575	3575	3575	5	3580	3558	3637	15	3472	3537	3658	25	3222	3444	3658	35	2878	3286	3601	45	2441	3057	3436	55	1897	2703	3086	65	1303	2187	2277	75	666	1281	1310	85	150	344	351	95	0	21	19	105	0	108	119	115	0	176	176	125	0	224	244	135	0	199	282	145	0	85	230	155	0	16	73	165	0	5	10	175	0	3	1	<table border="1"> <thead> <tr> <th>Degrees</th> <th>Lumens</th> <th>% Lamp</th> <th>% Luminaire</th> </tr> </thead> <tbody> <tr><td>0-30</td><td>2933</td><td>18.3</td><td>21.1</td></tr> <tr><td>0-40</td><td>4979</td><td>31.1</td><td>35.8</td></tr> <tr><td>0-60</td><td>9633</td><td>60.2</td><td>69.3</td></tr> <tr><td>0-90</td><td>13279</td><td>83.0</td><td>95.5</td></tr> <tr><td>90-180</td><td>621</td><td>3.9</td><td>4.5</td></tr> <tr><td>0-180</td><td>13900</td><td>86.9</td><td>100.0</td></tr> </tbody> </table>	Degrees	Lumens	% Lamp	% Luminaire	0-30	2933	18.3	21.1	0-40	4979	31.1	35.8	0-60	9633	60.2	69.3	0-90	13279	83.0	95.5	90-180	621	3.9	4.5	0-180	13900	86.9	100.0	<table border="1"> <thead> <tr> <th>Angle</th> <th>End</th> <th>45°</th> <th>Cross</th> </tr> </thead> <tbody> <tr><td>45</td><td>5572</td><td>6978</td><td>7843</td></tr> <tr><td>55</td><td>5338</td><td>7606</td><td>8684</td></tr> <tr><td>65</td><td>4976</td><td>8353</td><td>8696</td></tr> <tr><td>75</td><td>4153</td><td>7989</td><td>8169</td></tr> <tr><td>85</td><td>2778</td><td>6371</td><td>6500</td></tr> </tbody> </table>	Angle	End	45°	Cross	45	5572	6978	7843	55	5338	7606	8684	65	4976	8353	8696	75	4153	7989	8169	85	2778	6371
Angle	End	45	Cross																																																																																																																																			
0	3575	3575	3575																																																																																																																																			
5	3580	3558	3637																																																																																																																																			
15	3472	3537	3658																																																																																																																																			
25	3222	3444	3658																																																																																																																																			
35	2878	3286	3601																																																																																																																																			
45	2441	3057	3436																																																																																																																																			
55	1897	2703	3086																																																																																																																																			
65	1303	2187	2277																																																																																																																																			
75	666	1281	1310																																																																																																																																			
85	150	344	351																																																																																																																																			
95	0	21	19																																																																																																																																			
105	0	108	119																																																																																																																																			
115	0	176	176																																																																																																																																			
125	0	224	244																																																																																																																																			
135	0	199	282																																																																																																																																			
145	0	85	230																																																																																																																																			
155	0	16	73																																																																																																																																			
165	0	5	10																																																																																																																																			
175	0	3	1																																																																																																																																			
Degrees	Lumens	% Lamp	% Luminaire																																																																																																																																			
0-30	2933	18.3	21.1																																																																																																																																			
0-40	4979	31.1	35.8																																																																																																																																			
0-60	9633	60.2	69.3																																																																																																																																			
0-90	13279	83.0	95.5																																																																																																																																			
90-180	621	3.9	4.5																																																																																																																																			
0-180	13900	86.9	100.0																																																																																																																																			
Angle	End	45°	Cross																																																																																																																																			
45	5572	6978	7843																																																																																																																																			
55	5338	7606	8684																																																																																																																																			
65	4976	8353	8696																																																																																																																																			
75	4153	7989	8169																																																																																																																																			
85	2778	6371	6500																																																																																																																																			
<b>Coefficients of Utilization</b>																																																																																																																																						
<b>EFFECTIVE FLOOR CAVITY REFLECTANCE 20 PER (pfc=0.20)</b>																																																																																																																																						
pcc	80			70			50																																																																																																																															
pw	70	50	30	70	50	30	50	30																																																																																																																														
RCR																																																																																																																																						
0	102	102	102	100	100	100	93	93																																																																																																																														
1	93	88	83	90	85	81	81	78																																																																																																																														
2	82	76	68	81	73	68	69	65																																																																																																																														
3	75	66	57	72	64	56	60	55																																																																																																																														
4	68	56	48	66	56	47	53	46																																																																																																																														
5	63	51	42	60	50	41	46	40																																																																																																																														
6	57	46	36	56	44	36	41	35																																																																																																																														
7	53	40	33	52	40	33	38	32																																																																																																																														
8	48	36	29	47	35	28	34	28																																																																																																																														
9	46	34	27	45	33	26	32	26																																																																																																																														
10	42	30	23	41	30	23	29	23																																																																																																																														

#### IA all purpose industrial, 8' 2 Lamp 96W T12

Efficiency – 89.3%

LER – FI-73

TER – 44

<b>Catalog No.</b> IA296HO-1/2-EB <b>Test No.</b> 42325 <b>S/MH</b> 1.5 <b>Lamp Type</b> F96HO ES <b>Lumens/Lamp</b> 8000 <b>Ballast Factor</b> .84 <b>Input Watts</b> 164  Comparative yearly lighting energy cost per 1000 lumens – <b>\$3.29</b> based on 3000 hrs. and <b>\$.08</b> pwr KWH.  The photometric results were obtained in the Day-Brite laboratory which is NVLAP accredited by the National Institute of Standards and Technology.	<b>Candlepower</b>				<b>Light Distribution</b>				<b>Average Luminance</b>																																																																																																																													
	<table border="1"> <thead> <tr> <th>Angle</th> <th>End</th> <th>45</th> <th>Cross</th> </tr> </thead> <tbody> <tr><td>0</td><td>3663</td><td>3663</td><td>3663</td></tr> <tr><td>5</td><td>3661</td><td>3641</td><td>3716</td></tr> <tr><td>15</td><td>3550</td><td>3617</td><td>3747</td></tr> <tr><td>25</td><td>3306</td><td>3527</td><td>3747</td></tr> <tr><td>35</td><td>2951</td><td>3365</td><td>3684</td></tr> <tr><td>45</td><td>2501</td><td>3120</td><td>3511</td></tr> <tr><td>55</td><td>1964</td><td>2757</td><td>3164</td></tr> <tr><td>65</td><td>1341</td><td>2241</td><td>2343</td></tr> <tr><td>75</td><td>686</td><td>1314</td><td>1357</td></tr> <tr><td>85</td><td>166</td><td>379</td><td>387</td></tr> <tr><td>95</td><td>0</td><td>21</td><td>22</td></tr> <tr><td>105</td><td>0</td><td>113</td><td>126</td></tr> <tr><td>115</td><td>0</td><td>183</td><td>183</td></tr> <tr><td>125</td><td>0</td><td>233</td><td>254</td></tr> <tr><td>135</td><td>0</td><td>206</td><td>290</td></tr> <tr><td>145</td><td>0</td><td>87</td><td>237</td></tr> <tr><td>155</td><td>0</td><td>13</td><td>70</td></tr> <tr><td>165</td><td>0</td><td>0</td><td>5</td></tr> <tr><td>175</td><td>0</td><td>2</td><td>1</td></tr> </tbody> </table>	Angle	End	45	Cross	0	3663	3663	3663	5	3661	3641	3716	15	3550	3617	3747	25	3306	3527	3747	35	2951	3365	3684	45	2501	3120	3511	55	1964	2757	3164	65	1341	2241	2343	75	686	1314	1357	85	166	379	387	95	0	21	22	105	0	113	126	115	0	183	183	125	0	233	254	135	0	206	290	145	0	87	237	155	0	13	70	165	0	0	5	175	0	2	1	<table border="1"> <thead> <tr> <th>Degrees</th> <th>Lumens</th> <th>% Lamp</th> <th>% Luminaire</th> </tr> </thead> <tbody> <tr><td>0-30</td><td>3004</td><td>18.8</td><td>21.0</td></tr> <tr><td>0-40</td><td>5098</td><td>31.9</td><td>35.7</td></tr> <tr><td>0-60</td><td>9864</td><td>61.7</td><td>69.0</td></tr> <tr><td>0-90</td><td>13642</td><td>85.3</td><td>95.5</td></tr> <tr><td>90-180</td><td>650</td><td>4.1</td><td>4.5</td></tr> <tr><td>0-180</td><td>14292</td><td>89.3</td><td>100.0</td></tr> </tbody> </table>	Degrees	Lumens	% Lamp	% Luminaire	0-30	3004	18.8	21.0	0-40	5098	31.9	35.7	0-60	9864	61.7	69.0	0-90	13642	85.3	95.5	90-180	650	4.1	4.5	0-180	14292	89.3	100.0	<table border="1"> <thead> <tr> <th>Angle</th> <th>End</th> <th>45°</th> <th>Cross</th> </tr> </thead> <tbody> <tr><td>45</td><td>5709</td><td>7122</td><td>8014</td></tr> <tr><td>55</td><td>5527</td><td>7758</td><td>8904</td></tr> <tr><td>65</td><td>5122</td><td>8559</td><td>8948</td></tr> <tr><td>75</td><td>4278</td><td>8194</td><td>8463</td></tr> <tr><td>85</td><td>3074</td><td>7019</td><td>7167</td></tr> </tbody> </table>	Angle	End	45°	Cross	45	5709	7122	8014	55	5527	7758	8904	65	5122	8559	8948	75	4278	8194	8463	85	3074	7019
Angle	End	45	Cross																																																																																																																																			
0	3663	3663	3663																																																																																																																																			
5	3661	3641	3716																																																																																																																																			
15	3550	3617	3747																																																																																																																																			
25	3306	3527	3747																																																																																																																																			
35	2951	3365	3684																																																																																																																																			
45	2501	3120	3511																																																																																																																																			
55	1964	2757	3164																																																																																																																																			
65	1341	2241	2343																																																																																																																																			
75	686	1314	1357																																																																																																																																			
85	166	379	387																																																																																																																																			
95	0	21	22																																																																																																																																			
105	0	113	126																																																																																																																																			
115	0	183	183																																																																																																																																			
125	0	233	254																																																																																																																																			
135	0	206	290																																																																																																																																			
145	0	87	237																																																																																																																																			
155	0	13	70																																																																																																																																			
165	0	0	5																																																																																																																																			
175	0	2	1																																																																																																																																			
Degrees	Lumens	% Lamp	% Luminaire																																																																																																																																			
0-30	3004	18.8	21.0																																																																																																																																			
0-40	5098	31.9	35.7																																																																																																																																			
0-60	9864	61.7	69.0																																																																																																																																			
0-90	13642	85.3	95.5																																																																																																																																			
90-180	650	4.1	4.5																																																																																																																																			
0-180	14292	89.3	100.0																																																																																																																																			
Angle	End	45°	Cross																																																																																																																																			
45	5709	7122	8014																																																																																																																																			
55	5527	7758	8904																																																																																																																																			
65	5122	8559	8948																																																																																																																																			
75	4278	8194	8463																																																																																																																																			
85	3074	7019	7167																																																																																																																																			
<b>Coefficients of Utilization</b>																																																																																																																																						
<b>EFFECTIVE FLOOR CAVITY REFLECTANCE 20 PER (pfc=0.20)</b>																																																																																																																																						
pcc	80			70			50																																																																																																																															
pw	70	50	30	70	50	30	50	30																																																																																																																														
RCR																																																																																																																																						
0	105	105	105	102	102	102	96	96																																																																																																																														
1	94	90	85	92	88	83	82	80																																																																																																																														
2	85	78	70	82	75	68	71	66																																																																																																																														
3	77	67	58	75	65	57	61	56																																																																																																																														
4	69	58	51	68	56	50	55	47																																																																																																																														
5	64	52	44	61	51	42	48	41																																																																																																																														
6	58	46	38	56	46	38	44	36																																																																																																																														
7	55	41	34	53	40	33	39	32																																																																																																																														
8	51	38	29	48	36	29	35	28																																																																																																																														
9	46	34	27	46	34	27	33	26																																																																																																																														
10	44	32	25	42	30	23	29	23																																																																																																																														



Some luminaires use fluorescent or high intensity discharge (HID) lamps that contain small amounts of mercury. Such lamps are labeled, "Contain Mercury" and/or the symbol "HG". Lamps that contain mercury must be disposed of in accordance with local requirements. Information regarding lamp recycling and disposal can be found at [www.lamprecycle.org](http://www.lamprecycle.org)

