

**PHILIPS**

TrueBlend



# TrueBlend

High-performing, flexible  
lighting for your office



# The modern workplace

The modern workplace is shared by co-workers across three generations (X, Y and Z), all of whom have different working styles and needs. As the digital revolution is also changing the form and function of how we work and use our spaces, flexible solutions are in-demand to support varying needs and activities.

Employee well-being is now a priority and decision-makers are realising that office space plays a role in the talent retention strategy. Thus, more inspiring office spaces are being designed to promote networking and boost engagement.



Lighting can support your business with:



Sustainability



Showcasing identity



Short-term ROI



Employee comfort and well-being



Activity-based working



Improving workplace efficiency



Flexibility in capacity





While lighting can go a long way to support your business in facing its ever-growing challenges, there is an increasing need for lighting that helps you optimize operations, improve performance, and enhance engagement and well-being. There are several considerations to be made regarding lighting in order to meet these needs.



### To improve performance:

- Designed around specific activities and with a dedicated archetype for each office zone
- Empowering occupants to use the building and facilities more efficiently
- Insights into efficient use of space and operations



### To optimise operations:

- Efficient and office compliant
- Future-ready and upgradable solutions
- Flexibility to accommodate tenant and layout changes
- Fast return on investment



### To enhance engagement and well-being:

- Natural light is considered the benchmark for achieving enhanced comfort
- Personalized circadian lighting to boost well-being
- Integrated environmental sensors to optimize ambient climate conditions
- A flexible and scalable connected lighting system to form the foundation for human-centric lighting (Interact IoT)



# Lighting future spaces

Though the fluorescent ban became effective in August 2023, lots of businesses still have fluorescent lamps installed. TrueBlend can simplify your business' switch to LED. The modular design makes it possible to fit new TrueBlend luminaires in the same hole as the existing luminaires.

TrueBlend is a standard recessed offering that meets the flexibility requirements for ceiling integration and is suitable for a wide variety of ceiling types. It has a modular design that allows you to customize, using a selection of optics and light technology. It is a sustainable design built using the principles of lighting for circularity.

**Philips TrueBlend luminaires enable infinite lighting possibilities for the offices of today and tomorrow**

## What makes TrueBlend the ultimate choice in office lighting?

- Best-in-class efficacy up to 170 lm/W
- Quick and easy retrofit conversion
- Designed to support a circular economy, sustainability goals and employee well-being
- Catering to wide variety in ceilings and dimensions
- A choice of different optics
- Additional options in air handling, integrated emergency lighting, sensor integration, connectors and housing colors
- Ready to connect (Interact Ready Systems)



# Modular

TrueBlend is available with a variety of LEDs, optics, connectors, luminaire lengths and widths, and bracket heights, so you can tailor your luminaires to fit your space and needs. Length, width and bracket height can be tailored to the millimeter to fit the ceiling. With a standardized interface, the LED board and optics building blocks can easily be integrated in sheet metal recessed housings. A flexible manufacturing set-up allows for fast sample delivery and cost-effective supply.

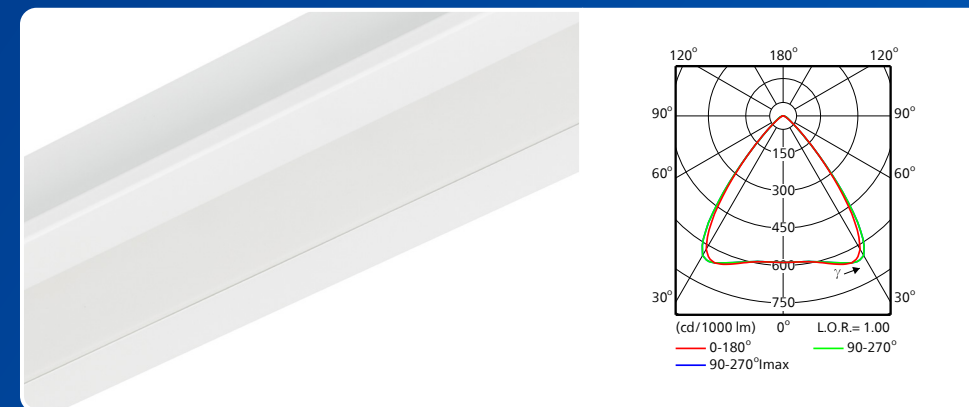


## LED Types

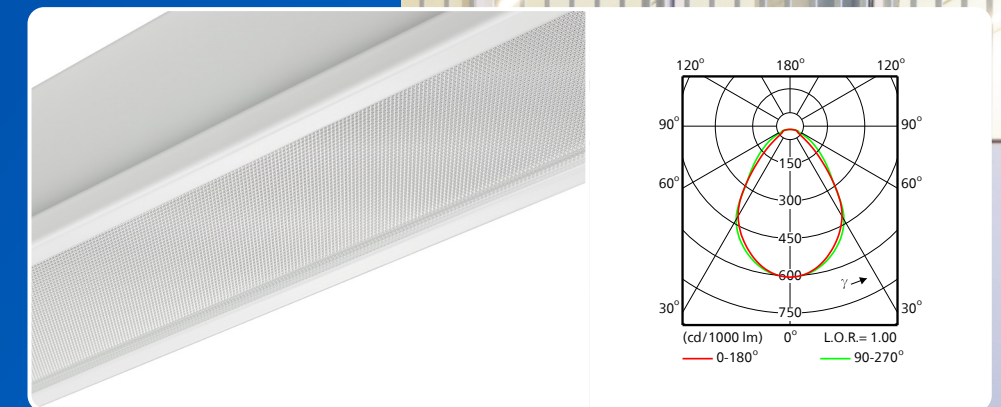
- 930
- 940
- 830
- 840
- TW9
- TWBU

## Optics

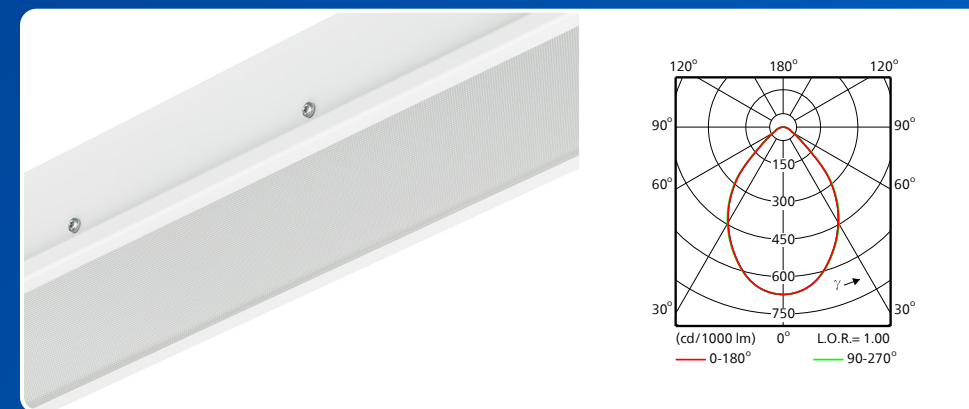
### DLO



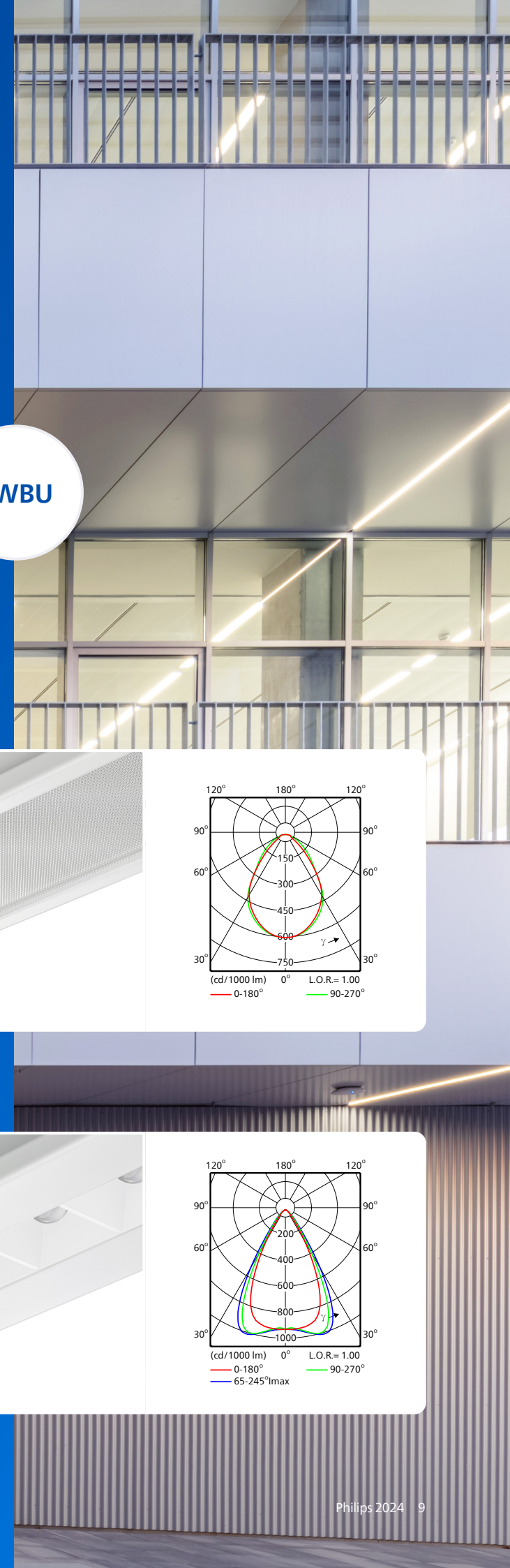
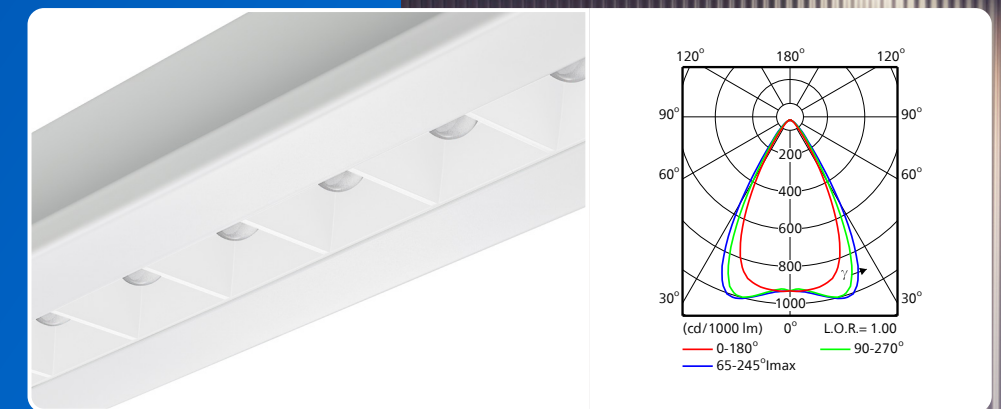
### MXO



### MLO



### Mini cups





## Open office application

### MXO

- Great performance
- Homogeneous optical window
- Ultra Efficient version

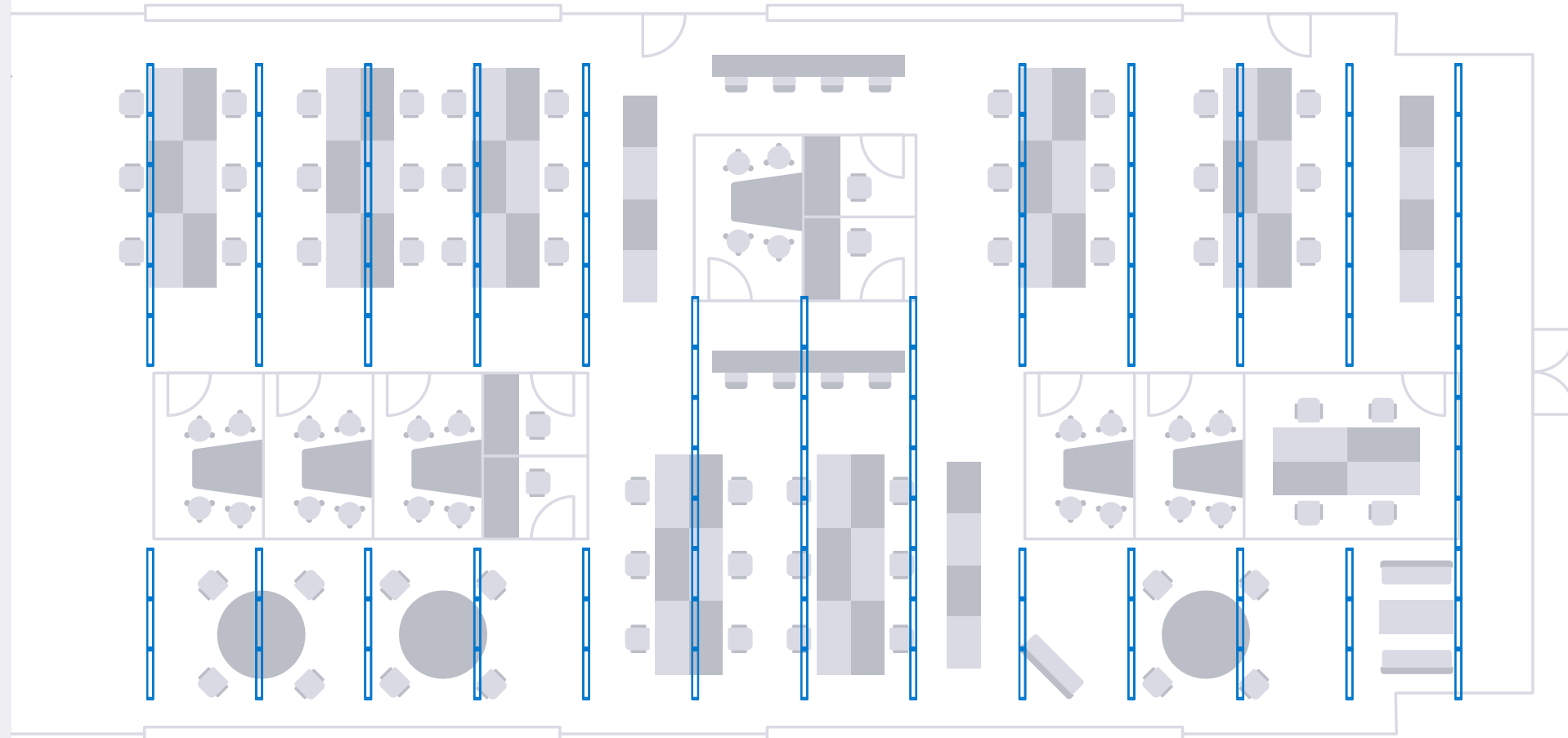


### DLO

- Best performance
- Highest lumen output meeting OC requirements
- Fewer luminaires needed

### MLO

- Good performance
- Homogeneous optical window
- High lumen output meeting OC requirements





# Family range

## RIM type



Air

Non-air

## Ceiling type

Bandraster ceiling version  
SAS330 ceiling version

## White color

RAL 9003  
RAL 9010  
RAL 9016

## Lamp color

930 – 3,000K 90 CRI  
940 – 4,000K 90 CRI  
830 – 3,000K 80 CRI  
840 – 4,000K 80 CRI  
UE 840 – 4,000K 80 CRI  
TW9  
TWBU

## Product length

Customized –  
L634 - L1970 mm

## Product width

Customized –  
W090-W300 mm

## Optic length

2 ft  
4 ft  
5 ft

## Optic width

40 mm  
50 mm  
76 mm  
101 mm  
126 mm

## Optics



MLO

MXO

DLO

Mini cups  
(white)

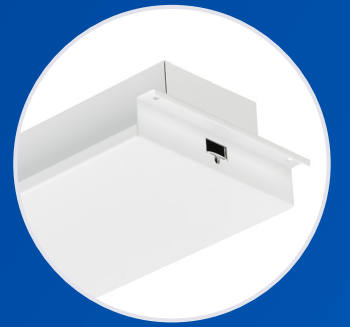
Mini cups  
(black)

## Connector

PIP  
W3  
W3W2  
W4, W4WT  
W4W2  
W5, W5WT  
W6, W6WT

## Lumen package

2 ft – 2,000 lm  
4 ft – 2,800 lm  
3,600 lm  
4,000 lm  
4,200 lm  
5 ft – 3,400 lm  
4,300 lm  
4,800 lm  
5,000 lm

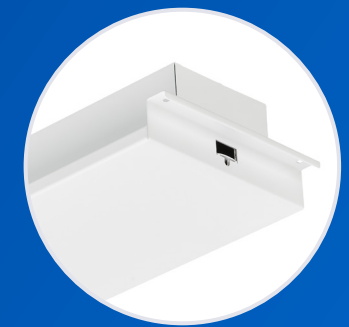


## Bracket height

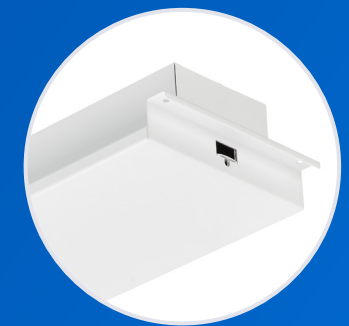
B25 - B45 mm customized  
B30 for C/U-profile  
B40 for T/Omega-profile

## Emergency indicator light

Trustsight Performer (3 hrs)  
Trustsight Dali (3 hrs)  
Trustsight Wireless IA Dali (3 hrs)



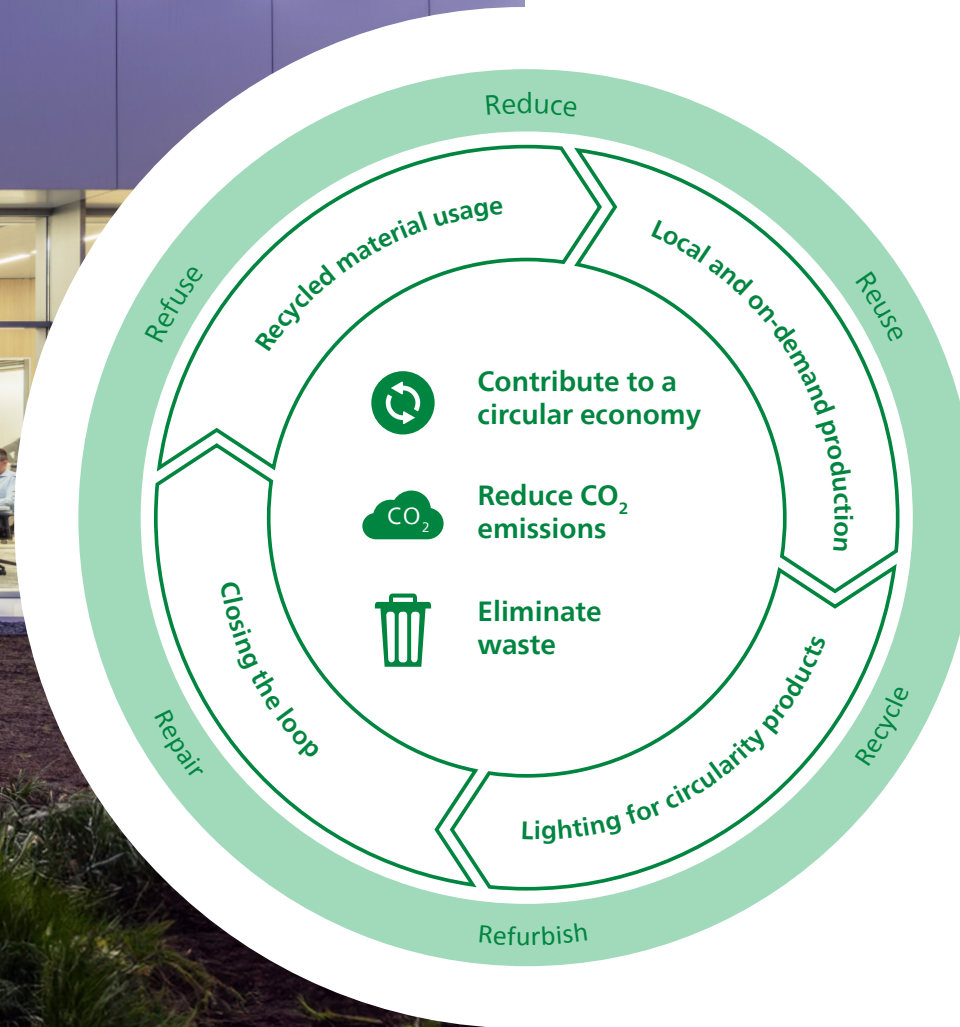
## SNS210 sensor



## SC1500 sensor



# Designed on sustainable and circular principles

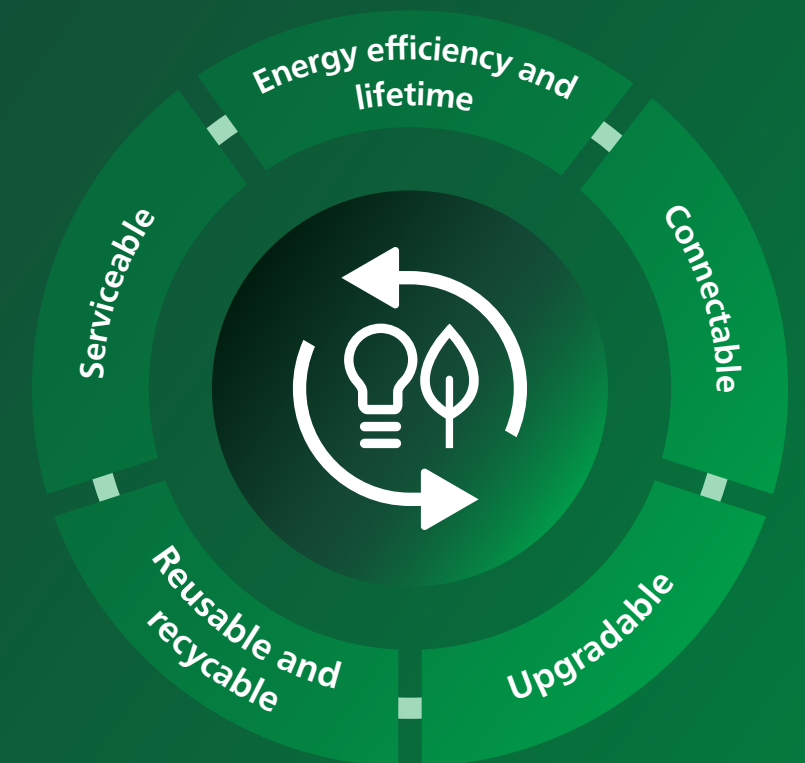


- Minimizing usage of packaging material and sending less than 1% waste to landfill from our factory
- Running programs to increase the recycled content in our plastics, steel and aluminum
- On-demand production with short lead times to prevent the build-up of unsold stock
- Ongoing energy saving programs with annual reduction targets (ISO150001 certified)
- Separate waste streams for optimal re-usage and recycling

Around 40% of the world's current CO<sub>2</sub> emissions are generated from buildings. As a result of global sustainability efforts, green building certifications and assessment methods such as BREEAM or LEED are attracting increasing amounts of attention and carrying greater weight than they have previously. Switching to TrueBlend can help your business meet the requirements of these certifications and help you achieve your sustainability targets.

TrueBlend luminaires are built in a **sustainable manufacturing facility** in Pila, Poland. We are **carbon-neutral** in our own operations, and our factory runs on **100% renewable electricity** from Polish windmills. We are minimizing our usage of non-recyclable and non-recycled materials, and reducing the waste we produce.

TrueBlend luminaires are designed on the principles of lighting for circularity. They are energy efficient and have extended lifetimes, with the ability to service and upgrade as necessary. Our modular product design maximizes the reuse of building blocks in the portfolio and products can be broken down into their separate parts of pure materials to improve recyclability. Wireless connection and integration to our Interact system and building management systems allow for energy savings beyond lighting and enable data-driven decision making.





interact  
by Signify

## Best-in-class efficacy

Experience greater energy efficiency from your lighting without compromising on quality. TrueBlend Ultra Efficient luminaires from Philips deliver significant energy savings combined with excellent light quality, DALI dimmability and Interact-ready connectivity features.

Immediately save up to 20% energy compared to the current best offering within the range, thanks to breakthrough technology. TrueBlend has the best-in-class.

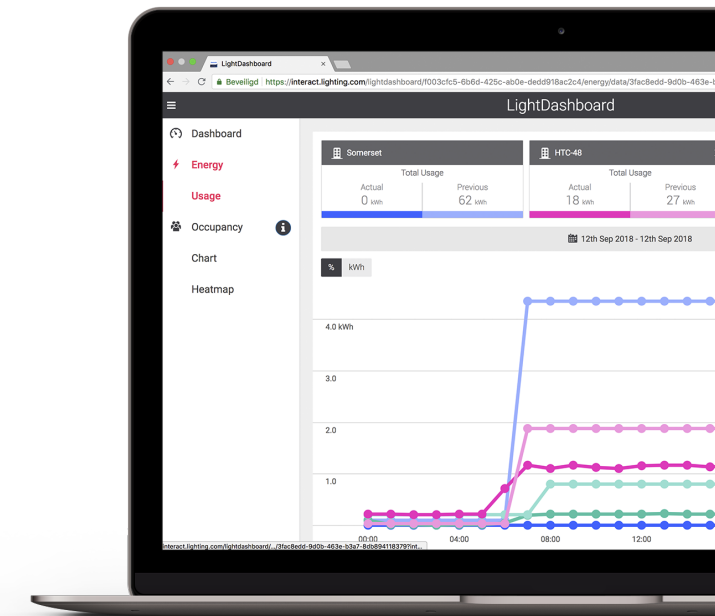


## Ready to connect

Take advantage of the untapped potential of the Internet of Things with an Interact connected lighting system. Interact is a flexible and scalable connected lighting system that is the perfect foundation for your human-centric lighting.

TrueBlend luminaires boast fully Interact-ready systems. By combining Interact and TrueBlend, you can get more out of your space, turning any office into a smart and sustainable one.

- Drive efficiency and save up to 80% on lighting energy bills over conventional alternatives
- Collect and view valuable data with embedded IoT sensors and Interact software
- Track space usage and see which areas are most in-demand at different times of the day with presence detection features
- Boost energy savings with daylight harvesting
- Support occupant circadian rhythms with bio-adaptive lighting
- Upgrade or scale up at any point
- Easily change LED intensities and color temperature to mimic natural daylight patterns throughout the day for optimal visual comfort
- Trigger lights through switches, an app or automation



## Get connected in five simple steps

### 1. Unbox

### 2. Install

Interact Pro gateway and Interact-ready lighting devices

### 3. Download

Interact Pro app on Android and IOS

### 4. Configure

System with Interact Pro app

### 5. Manage

Monitor and modify via Interact Pro dashboard for installers



# Lighting for well-being

Employees make up 90% of all business costs, but they can also be a business's greatest asset. When your employees thrive, so does your business. Investing in employee comfort and well-being can boost efficiency. A simple and effective way to do this in the workplace is through lighting.

Lighting doesn't just impact what we see, it affects us physically and emotionally too. We feel it throughout the day, for example in our sleep patterns or in our ability to focus. TrueBlend offers high-quality office-compliant lighting that brings improved visual comfort. Our human-centric lighting supports the circadian rhythm and can be personalized for employee comfort and satisfaction with features such as scene-setting and dimming.



## See well

Improve comfort and deliver the proper light levels with Philips LED while maintaining the highest workplace lighting standards.



## Feel well

Lead the way to healthy, more engaging workspaces with lighting that offers more personal control.



## Function well

Increase biological effects of light which determine our general wellbeing.

## Improved visual comfort

- Extraordinary quality of light
- Flicker free and no stroboscopic effect
- Photobiological safety
- Low glare for office-compliant
- Excellent color rendering

## Personal control and options

- Color temperature and intensity tuning
- Scene setting
- Personal control
- Tunable White
- Dimming

## Perform well

- Non-visual effects
- Tunable white BioUp





# Lighting for well-being with Interact

## Tunable White

Automate or trigger scene changes with a switch or app, mimicking natural daylight patterns for optimal visual comfort throughout the day.

## Scene switches

Freely choose pre-configured scenes with a switch or through an app on your phone.

## Control

Control lights via a switch or app for enhanced flexibility and comfort. Tune colors and dim levels with just a click.

## BioUp

Philips BioUp technology enhances the LED spectrum with cyan light, increasing the biological impact of the light. With Tunable White BioUp, the melanopic-DER is 40% higher than the standard LED spectrum, so you can use lower illuminance with the same melanopic contribution.

Product	MDER Value
	4000K
TrueBlend TW9	0.73
TrueBlend TWBU	0.83
TrueBlend Static CRI90	0.62
TrueBlend Static CRI80	0.65
TrueBlend Static UE	0.58





# Product specifications

Product family	Optical cover	Total width (mm)	Optic width (mm)	Total length (mm)	Optic length	Mounting	Luminous flux	Light color	Driver	Controls	Emergency lighting	Housing color	Connector	Accessory
<b>RC455B</b> Bandraster ceiling Without air handling	<b>DLO</b> Diffused Lens Optics	<b>W090-W099</b>	<b>40</b>	<b>L0634-L1194</b>	<b>2</b> 2-foot optics, 58cm	<b>B40</b> For T/ Omega- profile	<b>20S</b> 2000 lm	<b>930</b> 3,000 K 90 CRI	<b>PSED</b> - DALI Compatible with DC em. Lighting Touch&Dim enabled	<b>N</b> No sensor	<b>N</b> No emergency lighting	<b>9003</b> White RAL9003	<b>PIP</b>	<b>WT</b>
<b>RC455X</b> Bandraster ceiling With air handling	<b>MLO</b> Mico Lens Optic	<b>100</b>	<b>50</b>	<b>L1195-L1494</b>	<b>4</b> 4-foot optics, 112cm	<b>B30</b> For C/U- profile	<b>28S</b> 2800 lm	<b>940</b> 4,000 K 90 CRI			<b>ELP3</b> TrustSight Performer 3 hrs	<b>9010</b> White RAL9010	<b>W3</b>	
<b>RC435B</b> Bandraster ceiling Without air handling	<b>MXO</b> Micro heXagonal Optic	<b>125</b>	<b>76</b>	<b>L1495-L1970</b>	<b>5</b> 5-foot optics, 140 cm	<b>B25-B45</b> 25-45 mm	<b>34S</b> 3400 lm	<b>830</b> 3,000 K CRI80			<b>ELD3</b> TrustSight DALI 3 hrs	<b>9016</b> White RAL9016	<b>W3W2</b>	
<b>RC435X</b> Bandraster ceiling With air handling	<b>MCW-M</b> Mini Cups White	<b>150</b>	<b>101</b>	<b>1200</b>			<b>36S</b> 3600 lm	<b>840</b> 4,000 K 80 CRI	<b>SEIA</b> SR-driver Interact ready Compatible with DC em. lighting	<b>U4</b> SNS210 In upgradable slot			<b>W4</b>	
	<b>MCB-M</b> Mini Cups Black	<b>185</b>	<b>126</b>	<b>1700</b>			<b>40S</b> 4000 lm	<b>UE840</b> Ultra Efficient, 4,000 K CRI80		<b>U5</b> SC1500 In upgradable slot	<b>ELD3</b> TrustSight DALI 3 hrs		<b>W5</b>	
		<b>W101-W200</b>		<b>1720</b>			<b>42S</b> 4200 lm	<b>TW9</b> Tunable White CRI90			<b>ELW3</b> TrustSight DALI 3 hrs Wireless Interact connected		<b>W6</b>	
		<b>298</b>					<b>43S</b> 4300 lm	<b>TWBU</b> BioUp Tunable White Cyan enhanced spectrum						
		<b>300</b>					<b>48S</b> 4800 lm							
							<b>50S</b> 5000 lm							



# Choose Signify

We work closely with you throughout projects and beyond.

Our local service teams are dedicated to giving you the support and information you need, and local wholesalers to offer flexible and on-time delivery.

The Signify Lighting Academy is available to help you grow your expertise and get certified.

We aim to help you work faster, better, smoother.

How?  
Check [signify.com/installers](https://www.signify.com/installers)



**Signify**

Signify, previously Philips Lighting, is the world leader in connected LED lighting systems, software and services.

**PHILIPS**

Philips stands for quality and energy-efficiency in light. Philips has been innovating lighting for over 125 years.

**interact**  
by Signify

Interact is an IoT-enabled software that manages connected lighting systems from Signify and third-party manufacturers.





© 2024 Signify Holding. All rights reserved. The information provided herein is subject to change, without notice. Signify does not give any representation or warranty as to the accuracy or completeness of the information included herein and shall not be liable for any action in reliance thereon. The information presented in this document is not intended as any commercial offer and does not form part of any quotation or contract, unless otherwise agreed by Signify.

Philips and the Philips Shield Emblem are registered trademarks of Koninklijke Philips N.V. All other trademarks are owned by Signify Holding or their respective owners.

[www.lighting.philips.com](http://www.lighting.philips.com)