



ClearFlood gen2

Your floodlight range for outstanding performance, efficiency and connectivity



Reach new heights in performance and savings

Welcome the next generation of ClearFlood:
Optimized energy efficiency and product design for
a cost-effective switch to LED in logistics, retail,
parking sites, recreational sports fields and more

In today's competitive environment, reducing energy consumption and maintenance costs without compromising safety and comfort is paramount. The new ClearFlood gen2 addresses these challenges, offering advanced technology and innovative design that deliver exceptional performance, reliability and optional integrated connectivity.

Experience the benefits of an attractive total cost of ownership thanks to the intelligent product design and improved energy efficiency. With optional integrated wireless connectivity, the ClearFlood gen2 allows you to achieve even greater energy savings and operational excellence.

And with the HID ban underway in 2027, it's high time to discover how the new ClearFlood gen2 can transform your lighting installations, offering the perfect balance between safety, convenience and cost efficiency.

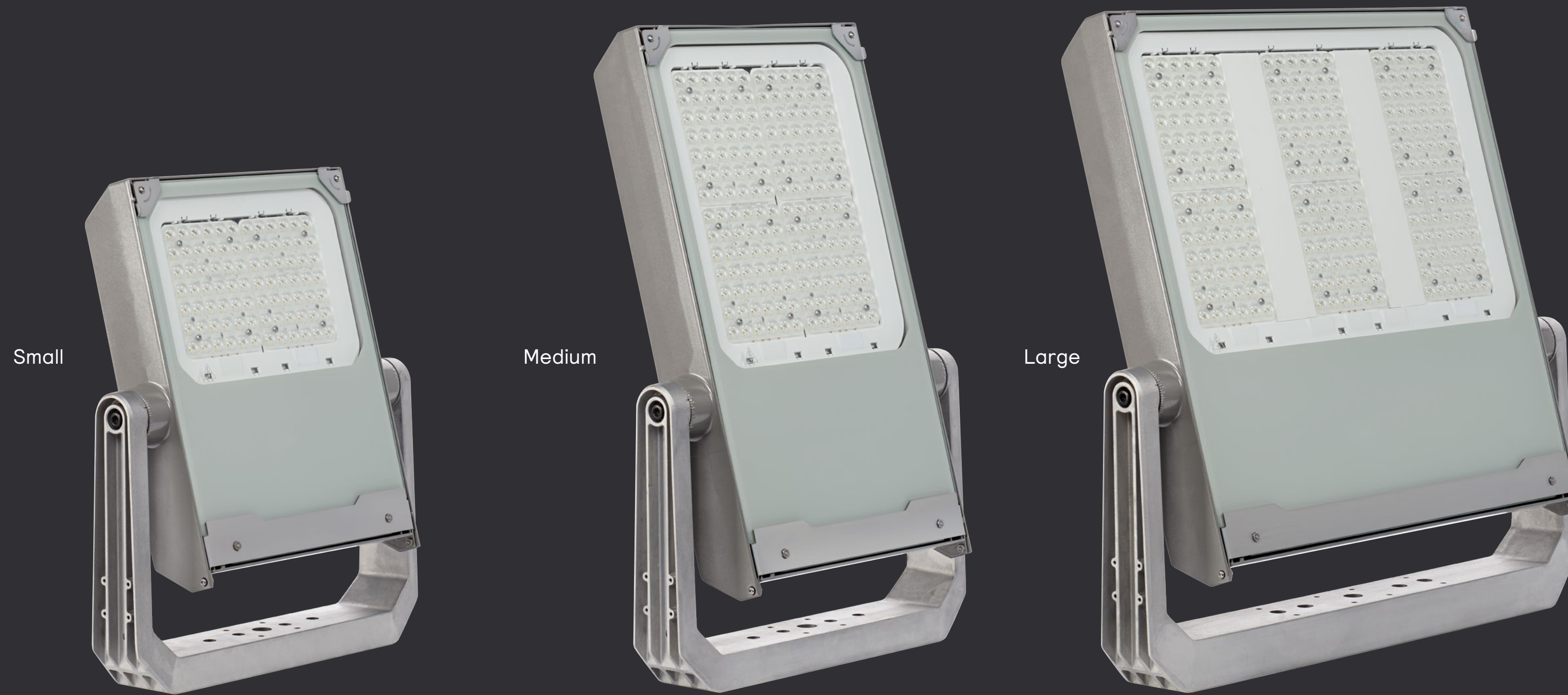


Contents

- Main product highlights 04
- Product configurator 05
- Product design highlights 06
- Application areas 07
- Connectivity: Interact 08
- Lighting for circularity 09
- Product specifications 11



Highlights of the new generation



Very attractive total cost of ownership

Thanks to its high luminous efficacy (143 lm/W to 167 lm/W, at CCT 4000K, CRI70), cost-effective design and very long lifetime (100,000 hours @L90).

Interact Ready connectivity for smart lighting

Connect to the cloud and discover additional ways to save energy through optimized efficiency and improved lighting management.
> Learn more about Interact



Optimized product design

From the harmonized look of the entire product range to the improved placement of the connectivity node, the new ClearFlood comes with a number of clever updates.
> Learn more

High-end optical platform


For optimal light distribution in sports and area applications.

Meets lighting for circularity criteria to help you achieve your sustainability goals

> Learn more



Product configurator

With our configuration options, you can customize the ClearFlood gen2 to match your demands and budget. Look out for our configuration recommendations in the brochure, labeled with this icon: 

Tip: With the configuration components listed below you can easily decipher every product code, for example:
 BVP656 LED600-4S/740 A65-WNB ALU

Family description	Lumen packages	Color temperature	Optics		Housing color
BVP655 Small	LED757 / LED740 BVP655: 10,000 lm – 30,000 lm BVP656: 35,000 lm – 60,000 lm BVP657: 50,000 lm – 93,000 lm	757 Cool white (5700K, CRI70)	A35-NB	A65-WB	N Housing and bracket unpainted
BVP656 Medium		740 Neutral white (4000K, CRI70)	A35-MB	A35-NWB	
BVP657 Large		730 Warm white (3000K, CRI70)	A35-WB	A35-NMB	ALU Standard grey 9007
	LED730 / LED727 BVP655: 10,000 lm – 29,000 lm BVP656: 30,000 lm – 55,000 lm BVP657: 45,000 lm – 85,000 lm	727 Warm white (2700K, CRI70)	A35-VWB	A55-NMB	RAL RAL (20 standard colors, others on request)
		727 Warm white (2700K, CRI70)	A55-NB	A65-NWB	
		840 Neutral white (4000K, CRI80)	A55-MB	A65-VWB	
		840 Neutral white (4000K, CRI80)	A55-WB	DW10	
	LED840 BVP655: 10,000 lm – 29,000 lm BVP656: 30,000 lm – 55,000 lm BVP657: 45,000 lm – 80,000 lm		A65-NB	DW30	

Get all product details in the [Signify e-catalog](#) or configure your own variant with our [online configurator](#)



Versatile, robust design in all sizes

Your requirements, your choice

Serviceability:

- Toolless opening of glass cover
([i](#) Select FG-TO in the product configurator)
- Opening of glass cover with screws
([i](#) Select FG in the product configurator)
- Opening of glass cover with screws
([i](#) Select FG in the product configurator)

Choice of housing finishings for different requirements and budgets

- Unpainted aluminum housing
([i](#) Select N in the housing color configuration)
- Standard coating
([i](#) Select N in the product configurator)
- Marine protected coating
([i](#) Select MSP in the product configurator)
- Swimming pool coating
([i](#) Select SPO in the product configurator)

Durable design for reliable performance

- IP 66 / IK 08
- Ambient temperature resistance: -40°C to +50°C
- Very long lifetime: 100,000 hrs at L90



Hassle-free installation

More compact product design and 25% lighter compared to previous generation¹

Bracket designed for easy 1-to-1 HID retrofit installations

Connectivity

Connectivity options available for all product sizes

Node integrated into the luminaire housing², instead of externally, for a sleeker look and lower cost

¹ Comparing ClearFlood gen2 small (BVP655) with ClearFlood (BVP650)

² Possible up to an inclination of 35°, beyond this an external box is required for optimum signal transmission/reception



Tailored lighting for diverse applications

Transportation hubs

- Outdoor: car parks, aprons, harbors, toll stations
- Indoor: train stations, airports

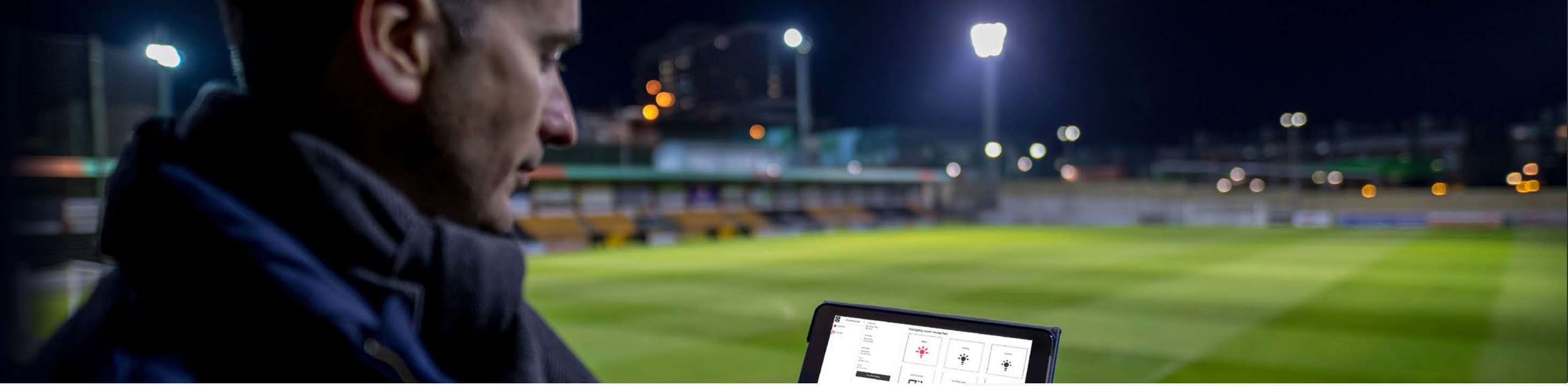
Retail and industrial sites

- Outdoor: car parks, facades, area lighting
- Indoor: storage areas

Recreational sports

- Outdoor: small and medium sized tennis courts, urban sports areas (e.g. basketball courts, skate parks)
- Indoor: multipurpose gymnasiums, swimming pools, basketball courts





Your way forward: Interact wireless smart lighting

With Interact, it's easier than ever to realize the benefits of smart lighting: higher energy savings, greater comfort, and improved operational efficiency – and a big step towards achieving sustainability goals.

General benefits

- Ideal for refurbishments and new installations
- No additional (DALI) control wires needed
- Quick to install with little downtime

Sustainable

- Enable higher energy and cost savings
- Reduce CO₂ emission and material waste

Smart

- Benefit from remote control and monitoring and reporting capabilities
- Use data to make better informed decisions more quickly

Safe

- Easily set the right lighting conditions for enhanced comfort and safety
- Get informed about issues to allow for timely and cost-efficient maintenance



The integrated connectivity node lets you connect to the cloud¹ to utilize the benefits of Interact smart lighting

i Select SRTB (Interact system ready driver) or PSD (DALI) in the product configurator



Designed for a circular economy

In 2024, we used 1.7 times the resources our planet can sustain. To transition to a sustainable and circular economy, we need to rethink the way we produce and consume. There's no plan B for our home planet. By choosing our lighting for circularity solutions, you get flexibility in lighting configurations and settings while reducing your carbon footprint to help you reach your sustainability development goals.

Go for optimal sustainability by selecting your renovation path

Are you looking to update your non-LED lighting?

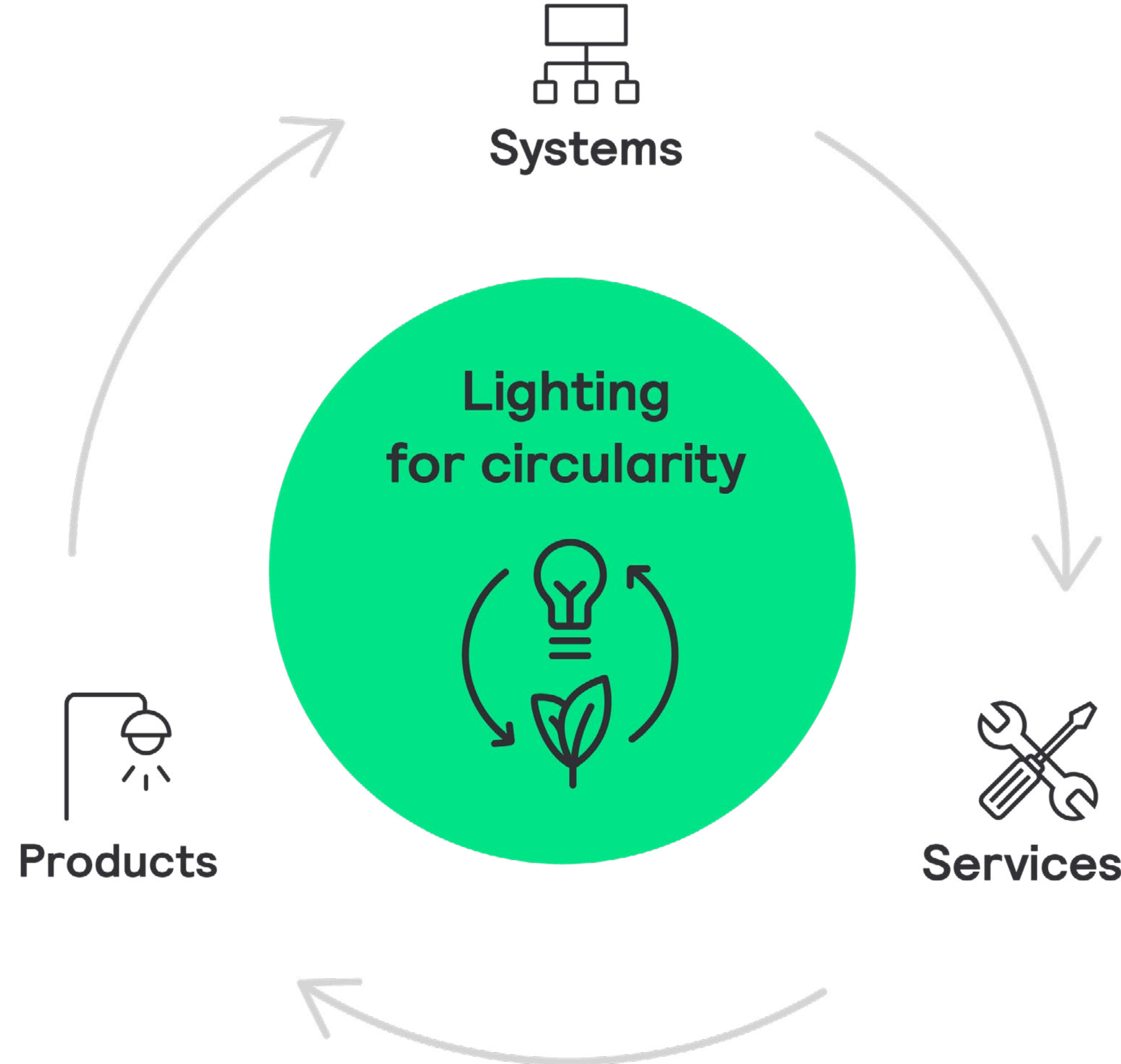
- Choose our lighting for circularity products
- Full portfolio of circular economy ready Signify LED luminaires
- Superior efficacy
- Products are recyclable, connectable and serviceable.

Are you planning to update your LED-based infrastructure?

- Discover our remanufacturing or refurbishment services
- Gain enhanced luminaire performance, extended lifetimes, and end of contract management

Do you want to unlock the potential of smart lighting?

- Update your infrastructure to smart lighting with our systems solutions
- Optimize your energy costs with insights into your energy usage
- Configure lighting behavior
- Remotely monitor your lighting system





ClearFlood gen2 meets the five criteria of Lighting for circularity



1. Energy efficiency & lifetime

- High-efficacy light engine with luminous efficacy from 143 lm/W to 167 lm/W (at CCT 4000K, CRI70)
- Optics support optimized lighting design for key applications
- Very long lifetime of 100,000 hours (L90) reduces the need to replace luminaires or components



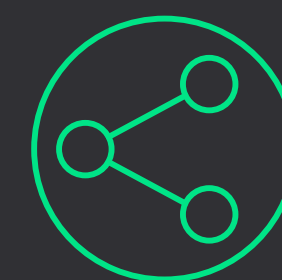
2. Serviceable

- Easy to install, service, maintain, repair and replace thanks to the QR-based service tag identification system
- Each luminaire and driver is uniquely identifiable



3. Reusable and recyclable

- Easy to dismantle and recycle
- No glue, no potted drivers



4. Connectable

- Serviceable drivers can connect ClearFlood to smart lighting systems, both wired (e.g. DALI) and wireless (e.g. Interact)



5. Upgradable

- Flexible system: Simply add new luminaires or drivers to upgrade specific functions or the entire system

Signify Service tag

Service tag from Signify is a unique QR code-based LED luminaire asset identification system that provides detailed information on specification and spare parts. The system simplifies the installation and maintenance of lighting infrastructure by utilizing cloud technology. Service tag also plays a key role in the circular design of our lighting solutions, as it extends their service life and reduces maintenance efforts, ensuring efficient servicing and avoiding waste.



How it works

Every luminaire is equipped with a unique QR code. All relevant asset data is stored in the service cloud, including detailed luminaire specification, User data (geo location, project-location, external ID, notes, etc.) and information on spare parts and accessories. By scanning the QR code on the packaging or luminaire with the Signify Service tag app, this information becomes instantly accessible, offering invaluable benefits.

Your benefits at a glance



During installation



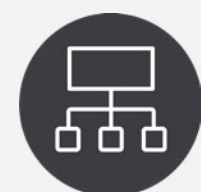
#1. Download the app

Download the Service tag app from the App store or Play store on your mobile device (iOS or Android).



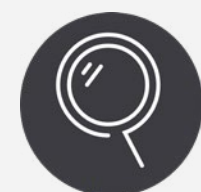
#2. Register the luminaire

Register the luminaire by simply scanning the QR code on the packaging or luminaire. The system automatically identifies the type of each luminaire.



#3. Create a group QR code

If you have multiple luminaires, it's possible to use the Service tag app to combine individual luminaires into a group. Each group will have its own unique group QR code.



#4. Luminaire information

Scan the QR code on your luminaire for easy access to the installation manual.

During service/maintenance



#1. Spare parts identification

Use the Service tag app to view a luminaire's spare parts, which contains all necessary information for quick ordering.



#2. Spare parts programming

Quickly program a spare driver using the Service tag app—without needing a faulty driver on hand. Scan the QR code of a luminaire with your device, put your mobile device on the spare driver, press "Program" and the spare driver receives the right settings for this specific luminaire.



Easy installation and commissioning

- Access to product details, manuals and spare parts
- Helps avoid errors



Simplified maintenance

- Detailed information on products
- Quick access to relevant information means less time required for repairs or replacements



Asset management

- Real-time tracking of assets
- Simplified management of replacements, upgrades and warranty information

Learn more at [signify.com/global/service-tag](https://www.signify.com/global/service-tag)



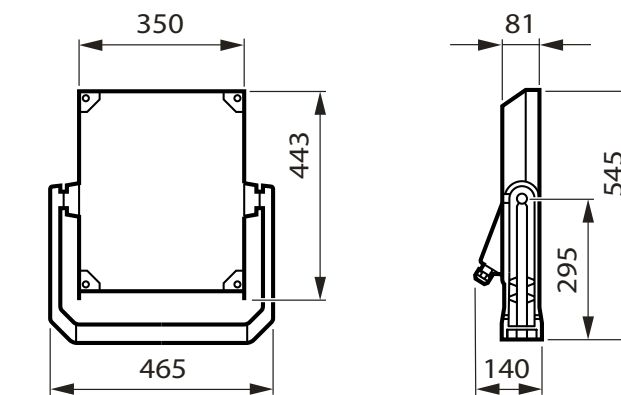
Specifications

Luminous flux	From 10,000 lm, up to 93,000 lm source lumen output
Efficacy	Typical efficacy from 143 lm/W to 167 lm/W (at CCT 4000K, CRI70)
Correlated color temperature	2700K / 3000 K / 4000 K / 5700 K
Color rendering index	≥70
Lifetime	100,000 hours at L90
Weight	12 kg (small; up to 30,000 lm) / 19 kg (medium; up to 60,000 lm) / 27 kg (large; up to 93,000 lm)
Optics	Dedicated Sports and Area light distribution platform, also used in OptiVision LED gen3.5
Voltage	230V
Electrical class	I and II
Ingress protection	IP66
Impact resistance	IK08
Surge protection	6/8 kV (standard) / 10kV (optional)
Ambient temperature	-40°C to +50°C
Finishing	Raw aluminium / Standard (500 hrs SST) / MSP (1,000 hrs SST) / Swimming pool treatment
Controls	DALI / SR (Interact Ready)
Warranty	5 years ¹

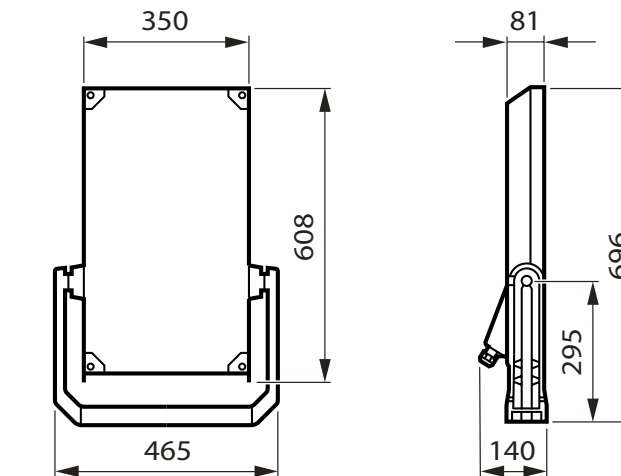
¹ For warranty conditions, [click here](#).

Product dimensions

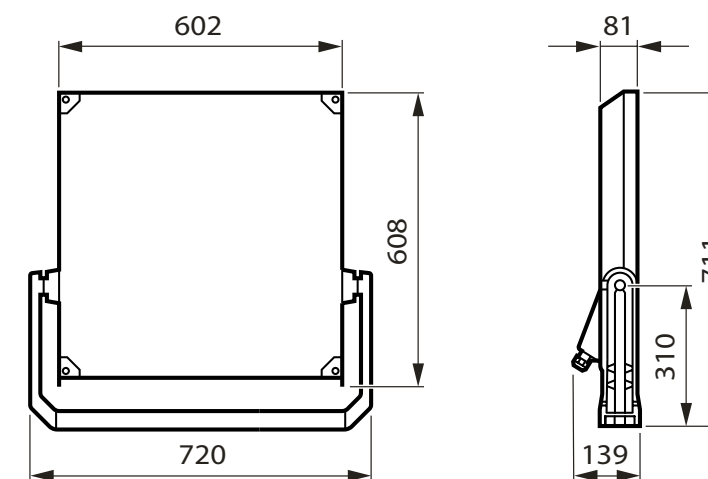
BVP655 small



BVP656 medium



BVP657 large



You and Signify – a reliable partnership

Signify is the world leader in connected LED lighting systems, software and services. We proudly bring to market the best lighting brands in the world, including Signify, Philips and Interact.

We believe in close cooperation before, during, and after every project. Our local teams provide the support and information you need—with flexible, on-time delivery and reliable product availability.

To help you stay ahead, the [Signify Lighting Academy](#) offers a comprehensive range of educational resources to grow your expertise and earn certification.

Our global brands

Signify

Signify represents our commitment to sustainable innovation. As our leading brand for connected lighting systems, luminaires and components for the specification project business, Signify solutions serve the segments where we collaborate most closely with our customers.

Signify interact

Signify Interact is our IoT software platform for managing smart lighting systems and unlocking the value of the data they collect. Easy to install and configure, Interact supports a wide range of applications—from small offices to entire cities.

PHILIPS

Philips stands for quality and energy efficiency in lighting. It is our leading brand for innovative, off-the-shelf lighting products for professionals and consumers alike.

Get more info on our products, services and tools:



Driven by responsible innovation

Signify and the Mercedes-AMG PETRONAS F1 Team share a passion for technology and a desire to push the boundaries of what is possible.

Our innovations in lighting serve the well-being and performance of the team, deliver powerful experiences, both trackside and at home, and help the team pursue its ambition to become one of the most sustainable in sport.

Learn more at

Signify is Official Lighting Partner of Mercedes-AMG PETRONAS F1 Team



Official Lighting Partner





the meaning of light