



CityVario

A versatile family for cost-efficient street lighting



* This icon has been developed by Signify and is used as a self-certification for UltraEfficient luminaires meeting the standards of tier 3 in IEA 4E SSL ANNEX. Only applicable for selected UltraEfficient configurations.

Contents

- Meet CityVario 03
- Family range 04
- LEDgine 07
- Signify Circle 09

- Connectivity: Interact 11
- Serviceability 12
- Product specifications 13



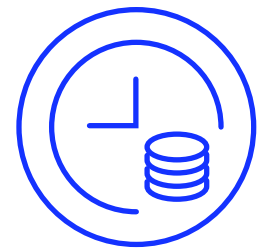
Modular street lighting for evolving urban spaces

The **Signify CityVario family** delivers modular, cost-efficient street lighting designed for modern cities. With five luminaire types, CityVario combines classic design, easy servicing, and efficient performance to support long-term urban lighting strategies.



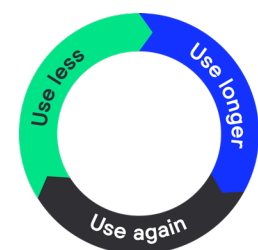
Modular lighting family

Choose from five versatile luminaires – Post top, Asymmetrical, Bowl, Suspended, and Catenary – to suit different street layouts and urban applications.



Designed for cost efficiency

Competitive pricing, easy servicing, and upgradeable components help municipalities reduce operational costs while maintaining reliable lighting performance.



Built with sustainability in mind

Reusable components, reduced material use, and long-lasting LED technology help cities improve lifecycle impact and meet energy targets.



Range overview

Bowl
BDS200



Post top two arms
BDS300



Suspended
BSS300



Asymmetrical
BPS300 (side entry)
BPS301 (post top)



Catenary
BSS301



CityVario in a nutshell

Wide application coverage

- Five luminaire types: Post top, Asymmetrical, Bowl, Suspended, and Catenary
- LEDgine optimized and LEDgine performance platforms
- Wide range of optics for different street layouts and environments

Energy-efficient and durable

- Source lumen output: 800-10,000 lm
- Efficacy of 171 to 175 lm/W for UltraEfficient configurations
- Lifetime: 100,000 hours (L90)
- IP66 and IK10 protection for demanding outdoor environments

Compact design

- Small luminaire size reduces material use
- Compact design simplifies installation and handling

Sustainable design

- Housing made with high recycled material content
- Reduced material waste through optimized design
- Easy end-of-life disassembly to support circularity
- Environmental Product Declaration (EPD) available

Interact Ready connectivity

for smart lighting

High-quality, comfortable light

that provides excellent visibility for enhanced safety

Simplified maintenance

- Hassle-free spare parts identification thanks to Signify Service tag
- Designed for efficient upgrades and maintenance

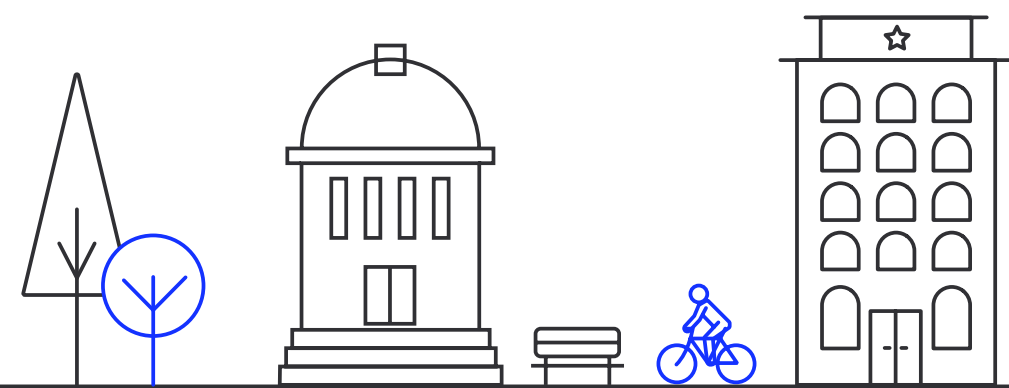
Get all product details and documents in the [Signify e-cat](#) or configure your own variant with our online configurators

Application areas

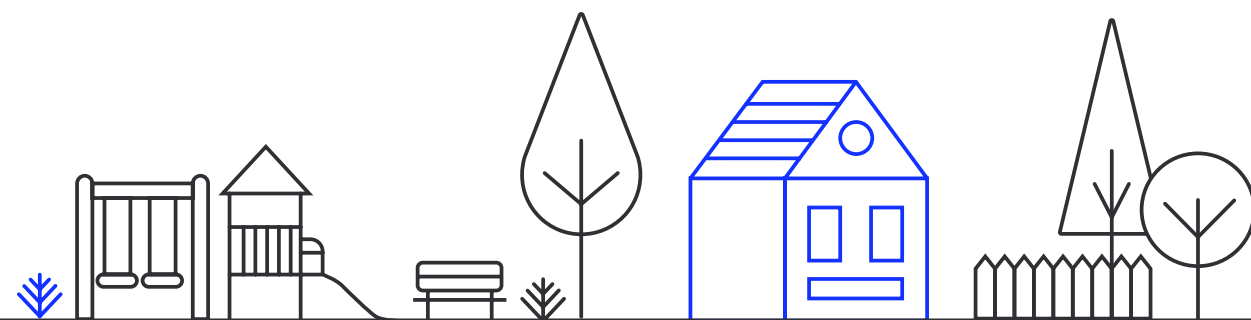
CityVario suits a wide range of urban applications.



Office and industrial areas



Inner city and squares



Parks, pathways and residential areas



Future-ready LED upgrades without redesigning the lighting plan

Enabled by standardized, backward-compatible LED boards and optics

New UltraEfficient LEDgine performance engine

- Delivers up to 200 lm/W system efficacy in selected configurations.
- Maintains strong efficacy in warmer light colors, supporting the move toward warmer outdoor lighting.
- Supports a lower total cost of ownership through higher energy savings and higher flux from the same housing, with potential to reduce initial cost.

From standardized offer to tailored optimization

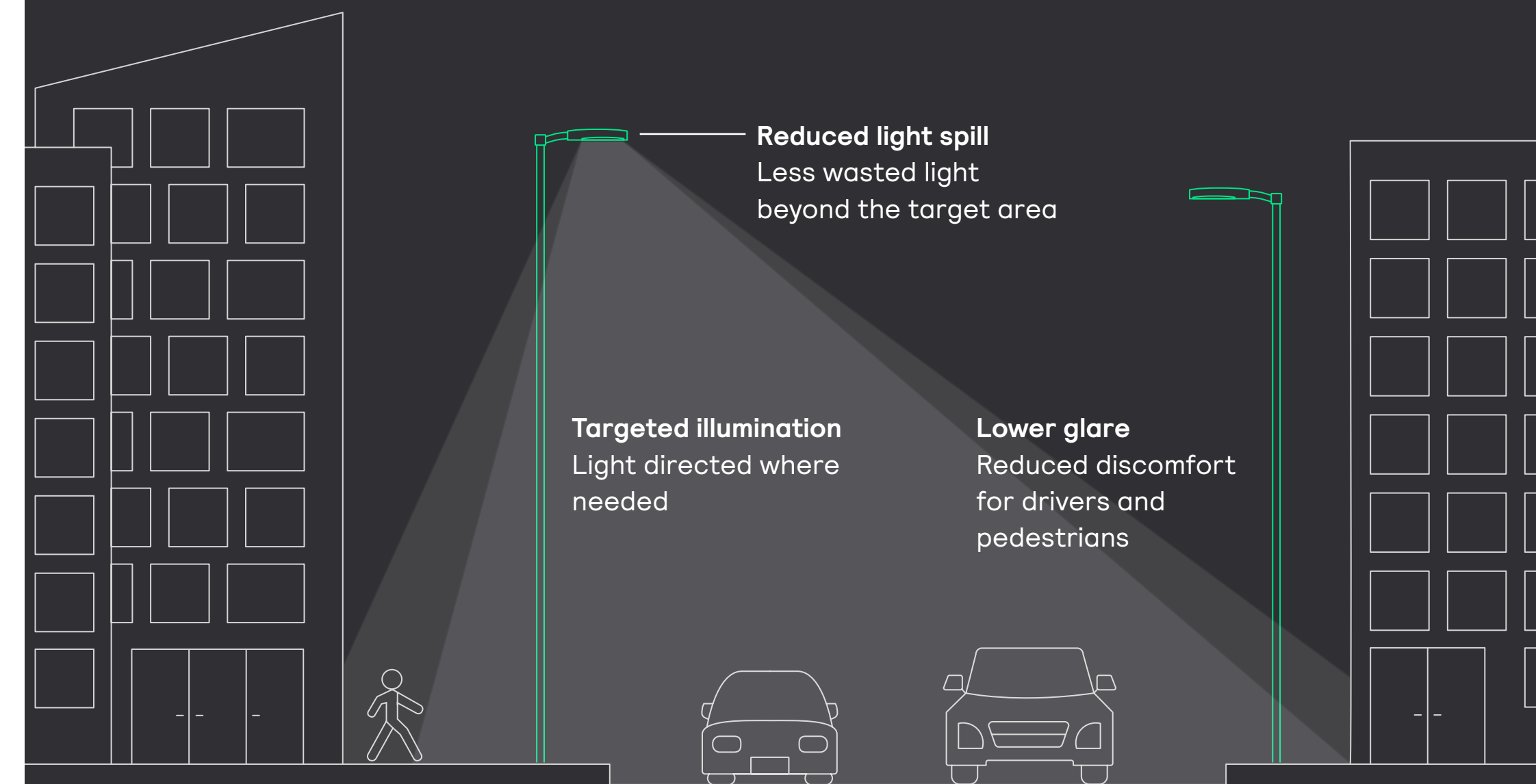
- A predefined range of flux packages and optics already covers many applications with strong performance.
- This creates a standardized yet flexible range for easier specification, ordering and maintenance.
- For more demanding projects, Signify can support solution optimization with dedicated tools to identify the lowest required flux and best optical fit.

Standardized engines and optics for design continuity

- Upgrade LED performance without changing light distribution, avoiding the need to redo the lighting design.
- Standardized service parts simplify maintenance and spare parts handling, supported by Signify Service Tag.
- A wide choice of light colors and dedicated light recipes, such as ClearStar for night-sky preservation, helps address different application needs and supports environmental requirements.
- A complete range of optics and louvers supports different road geometries, tilt, overhang and glare requirements, helping deliver the right light distribution with the lowest possible energy use.

New UltraEfficient LEDgine performance engines for maximum energy savings.

How LEDgine shapes luminaire efficacy and application fit



1. Overall system performance

Combination of luminaire efficacy and total application coverage.

2. Luminaire efficacy

Lumen output from the luminaire (system flux) relative to LED and driver power consumption (system watt)

3. Application fit

Suitable light distribution (optic) and efficient use of system flux in the area to be lit.

Signify Service tag

Service tag from Signify is a unique QR code-based LED luminaire asset identification system that provides detailed information on specification and spare parts. The system simplifies the installation and maintenance of lighting infrastructure by utilizing cloud technology. Service tag also plays a key role in the circular design of our lighting solutions, as it extends their service life and reduces maintenance efforts, ensuring efficient servicing and avoiding waste.



How it works

Every luminaire is equipped with a unique QR code. All relevant asset data is stored in the service cloud, including detailed luminaire specification, User data (geo location, project location, external ID, notes, etc.) and information on spare parts and accessories. By scanning the QR code on the packaging or luminaire with the Signify Service tag app, this information becomes instantly accessible, offering invaluable benefits.

Your benefits at a glance

During installation



#1. Download the app

Download the Service tag app from the App store or Play store on your mobile device (iOS or Android).



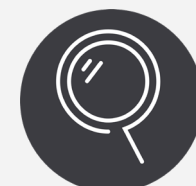
#2. Register the luminaire

Register the luminaire by simply scanning the QR code on the packaging or luminaire. The system automatically identifies the type of each luminaire.



#3. Create a group QR code

If you have multiple luminaires, it's possible to use the Service tag app to combine individual luminaires into a group. Each group will have its own unique group QR code.



#4. Luminaire information

Scan the QR code on your luminaire for easy access to the installation manual.

During service/maintenance



#1. Spare parts identification

Use the Service tag app to view a luminaire's spare parts, which contains all necessary information for quick ordering.



#2. Spare parts programming

Quickly program a spare driver using the Service tag app—without needing a faulty driver on hand. Scan the QR code of a luminaire with your device, put your mobile device on the spare driver, press "Program" and the spare driver receives the right settings for this specific luminaire.



Easy installation and commissioning

- Access to product details, manuals and spare parts
- Helps avoid errors



Simplified maintenance

- Detailed information on products
- Quick access to relevant information means less time required for repairs or replacements



Asset management

- Real-time tracking of assets
- Simplified management of replacements, upgrades and warranty information

Learn more: [signify.com/global/service-tag](https://www.signify.com/global/service-tag)



Signify and the Circular Economy

Signify Circle helps customers choose products and services that advance their circular economy goals

The Circular Economy is how we will build a sustainable and prosperous lighting industry, reducing the dependency on scarce resources, minimizing waste and creating long-term value for customers and for our business. Circular solutions use fewer materials, consume less energy, preserve value, reduce total cost of ownership, and unlock new economic opportunities.

That's why Signify introduced Signify Circle—a comprehensive circularity offering to help customers in advancing their circular economy goals:

Signify Circle products

Are fully aligned with our circular design principles, meeting key thresholds for "use less, use longer, use again" and earning the Signify Circle label.

Lighting-as-a-Service

Customers get optimal lighting performance without owning or maintaining equipment—a simple way to ensure long-term quality while reducing upfront and total costs.

Reuse, refurbish and remanufacture

Customers can extend product life by restoring used luminaires to as-new performance through our professional services.

Spare parts and upgrade kits

Maintenance is easier than ever with instant access to service info, spare parts, and upgrades—keeping systems up to date cost-effectively and with minimal disruption.

Learn more: [signify.com/circle](https://www.signify.com/circle)



CityVario



Designed with circularity in mind, it's part of the Signify Circle portfolio

Use less

- Uses 43 to 52% non-virgin materials, depending on product type
- Energy efficient: 171 to 175 lm/W for UltraEfficient configurations
- Packaging: paper made from 80% recycled cardboard

Use again

Luminaire can be easily dismantled and broken down into separate parts of the same (pure) material. Those materials can then be recycled, helping to reduce environmental impact and keep critical raw materials in use.

Use longer

- Long lifetime of up to 100,000 hours (L90) reduces the need to replace luminaires or components
- The luminaire is fully serviceable without the need for special tools. These components can easily be replaced:
 - 1 Driver
 - 2 LED board
 - 3 Optics
- Equipped with a unique [Signify Service tag](#) QR code, enabling easy identification of spare parts and upgrade bundles.

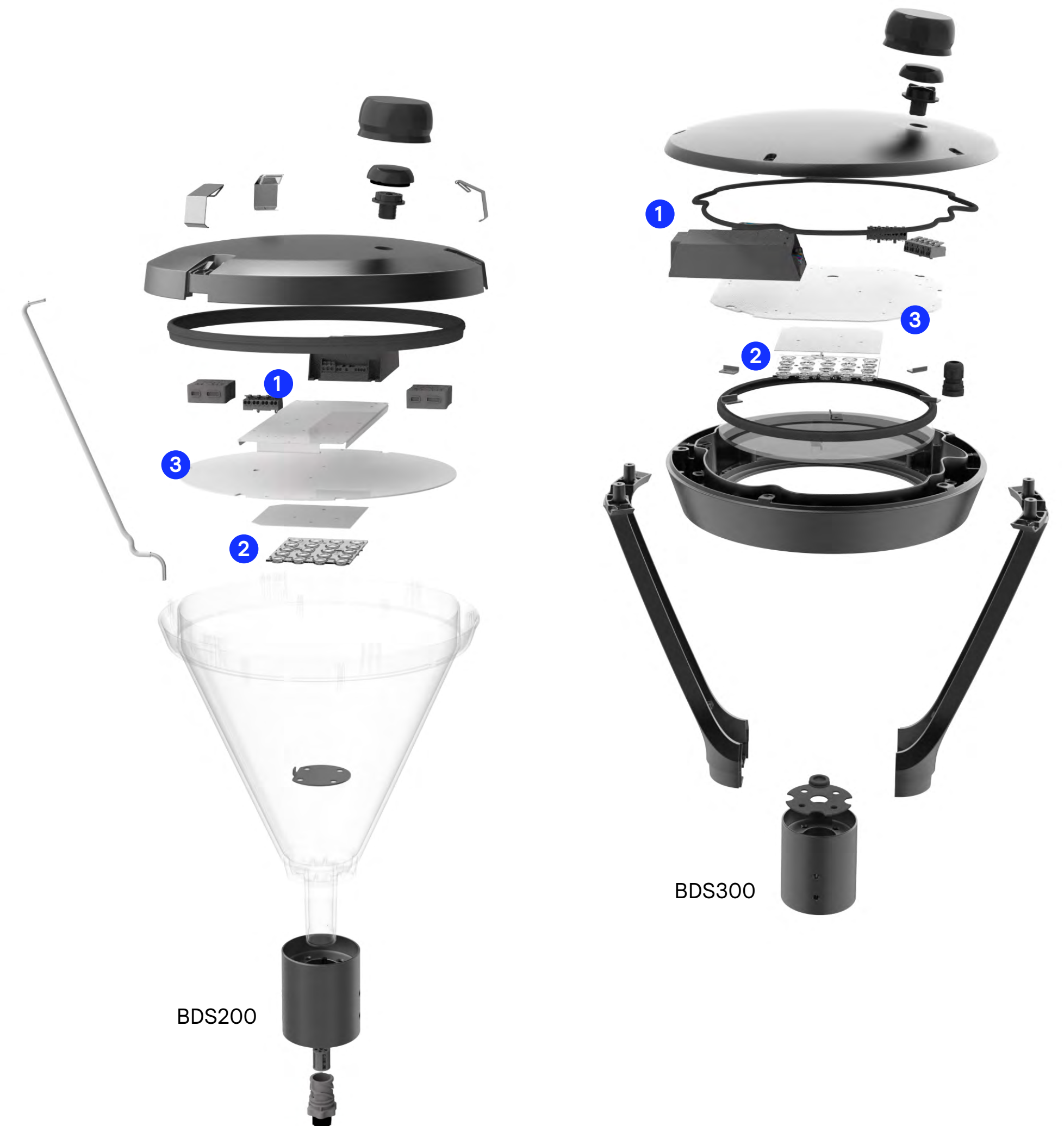


Environmental product declarations (EPD) are available for the whole CityVario family, download them here: [BDS200](#) | [BDS300](#) | [BPS300/301](#) | [BSS300](#) | [BSS301](#)

Built in a sustainable manufacturing facility

- EU-made in our own factories in Kertzyń, Poland (BDS200) and Valladolid, Spain (all other product types)
- Optimized supply chain (full trucks, direct deliveries) and on-demand production
- The factories send less than 1% waste to landfill¹

- 100% renewable electricity from Polish wind farm (Kisielice) via vPPA (Kętrzyn factory), or from 1,256 photovoltaic modules with installed power of 550 kWp and remaining energy from Finnish wind farm (Mutkalampi) via vPPA (Valladolid factory)
- Ongoing energy saving programs with annual reduction targets (ISO 15001 certified)



² According to the [Signify Annual Report 2025](#)



Interact for smart lighting in city applications

Interact City lighting management software turns your street lighting into a connected network capable of hosting sensors and other IoT enabled devices. It enables you to tap into a wide range of both lighting and non-lighting benefits such as dimming, presence detection, noise or air quality monitoring, and incident detection.

Smart

- Benefit from remote control and monitoring and reporting capabilities
- Use data to make better informed decisions more quickly

Sustainable

- Identify opportunities for further energy savings by dimming, scheduling and zoning
- Optimize the lights' power factor to minimize waste and reduce demand on the power grid

System ready

- The Open APIs of the system allow Interact City lighting management software to be integrated into your other city management systems
- This enables your existing partners or independent third parties to use it as a platform for future innovation

[> Learn more about Interact](#)

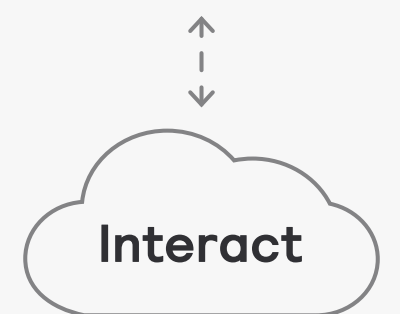
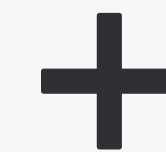


This is all you need for your smart lighting system

CityVario

equipped with control node on top and/or at the bottom

Software applications



Product configurator

Product family

BDS200: Bowl
BDS300: Post top two arms
BSS300: Suspended
BPS300: Asymmetrical (side entry)
BPS301: Asymmetrical (post top)
BSS301: Catenary

Optics

4S: LEDgine optimized
Narrow: DN09, DN11, DN50
Medium: DM11, DM13, DM32, DM52, DM65, DM70
Wide: DW10, DW50, DW52
Extra wide: DX10, DX52, DX65, DX70
Symmetrical: DS50, DS51

1P: LEDgine performance

Narrow: DN08P, DN27P, DN50P
Medium: DM14P, DM16P, DM20P, DM22P, DM32P, DM65P, DM70P
Wide: DW10P, DW30P, DW52P
Extra wide: DX11P, DX70P
Symmetrical: DS51P, DS52P

Color temperature

718: Warm white 1800K, CRI70¹
722: Warm white 2200K, CRI70
727: Warm white 2700K, CRI70
827: Warm white 2700K, CRI80²
730: Warm white 3000K, CRI70
830: Warm white 3000K, CRI80
740: Neutral white 4000K, CRI70
840: Warm white 4000K, CRI80
757: Neutral white 5700K, CRI70

Lumen package

LEDgine optimized: 800 – 10,000 lm
LEDgine performance: 800 – 9,500 lm

Housing material

ADC1: Aluminium die-cast ADC1
PLC: Polycarbonate

Connectivity option

SRTB: Interact Ready with Zhaga socket

Dimming options

D9: DALI (PSD)
D11, D12: LineSwitch
D13: Amp dimming
D18: DynaDimmer int.(PSDD)
D24: DynaDimmer int. DALI (PSDD)
D28: Dimming via coded mains voltage

Optional features

BL1: Louver for limited backlight cut-off²
BL2: Louver for sharp backlight cut-off²
PL1: Louver for limited backlight cut-off¹
PL2: Louver for sharp backlight cut-off¹
MSP: Marine salt protection coating

Product-specific options

Mounting (BDS300)

60P: 62 mm post-top
76P: 76 mm post-top

Opening/closing systems (BDS200)

SCR: Screws (standard)
CLP: Clips



¹ LEDgine performance only ² LEDgine optimized only



Product specifications

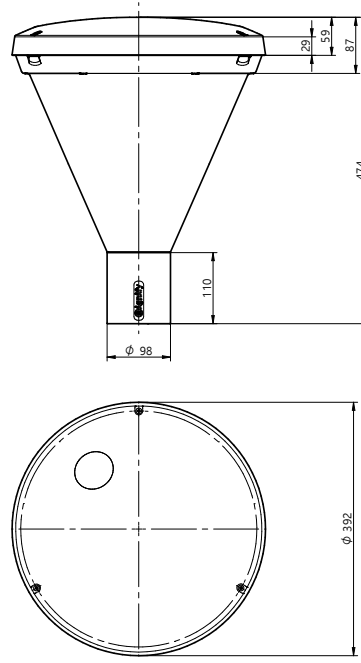
Type	BDS200: Bowl; BDS300: Post top two arms; BPS300/BPS301: Asymmetrical (side entry/post top); BSS300: Suspended; BSS301: Catenary
Light source	LEDgine optimized and LEDgine performance – Signify standardized LED-module
System Power	3.4W to 60.7W (depending on flux and color temperature)
Luminous flux	800 lm to 10,000 lm
Luminaire efficacy	61 lm/W to 175 lm/W
Optical option	Backlight control louver
Controls system input	DALI
Dimming	LineSwitch, DynaDimmer
Group control	Coded mains
Connectivity	Interact City LightWave for SR socket
Material	Spigot: high-pressure die-cast aluminum Canopy: high-pressure die-cast aluminum or impact resistant UV stabilized polycarbonate (PC)
Color	Dark grey (RAL 10714)
Color options	Selection of RAL colors on request
Ingress protection	IP66
Impact protection	IK10
Weight	BDS200: 5 kg (with PC canopy); 6 kg (with aluminum canopy) BDS300 and BPS301: 7.5 kg BSS300/BSS301 and BPS300: 6.5 kg
Color rendering index	70 (4000K, 3000K, 2700K, 2200K)
Lumen maintenance	L87 to L96 (depending on flux)
Operating temperature range	-40 to +50 °C

Get all product details and documents in the [Signify e-cat](#) or configure your own variant with our online configurators

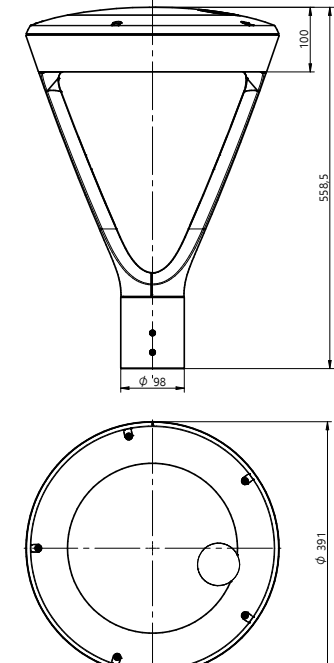


Product dimensions

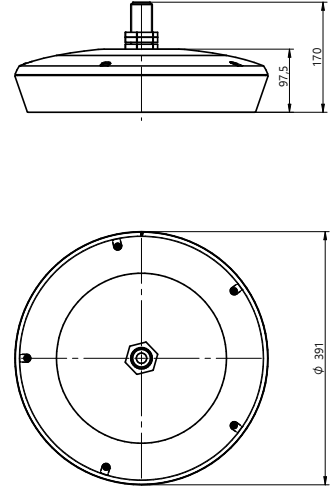
CityVario Bowl
BDS200



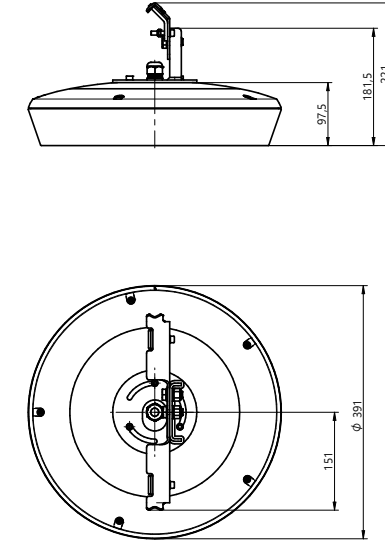
CityVario Suspended
BSS300



CityVario Suspended
BSS300

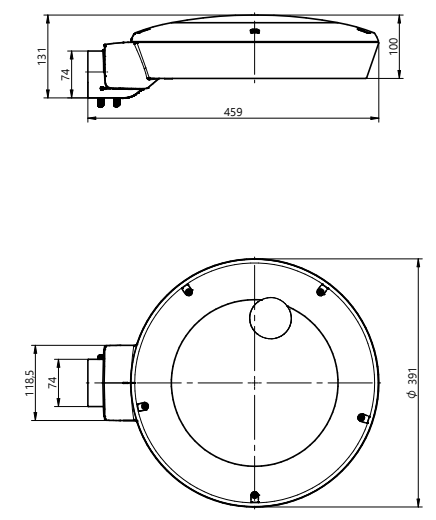


CityVario Catenary
BSS301

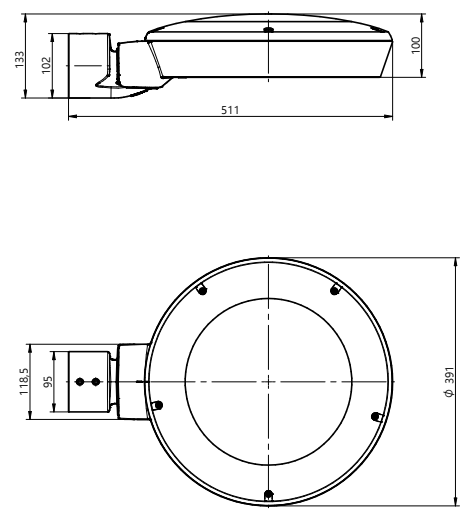


CityVario Asymmetrical, side entry
BSS300

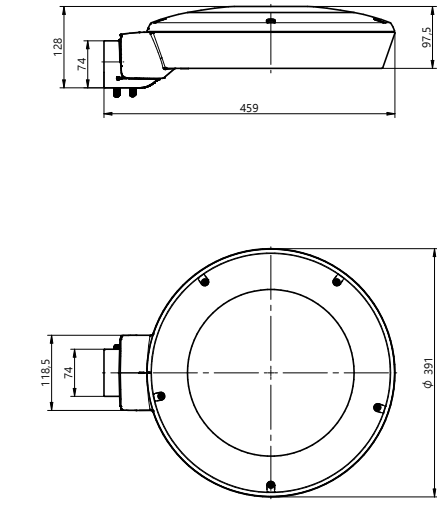
PC cover, spigot Ø60



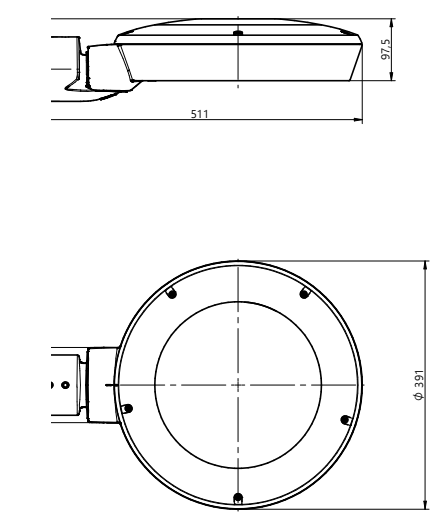
PC cover, spigot Ø76



Alu cover, spigot Ø60

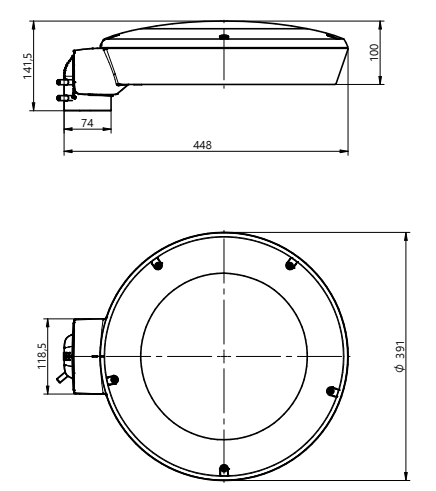


Alu cover, spigot Ø76

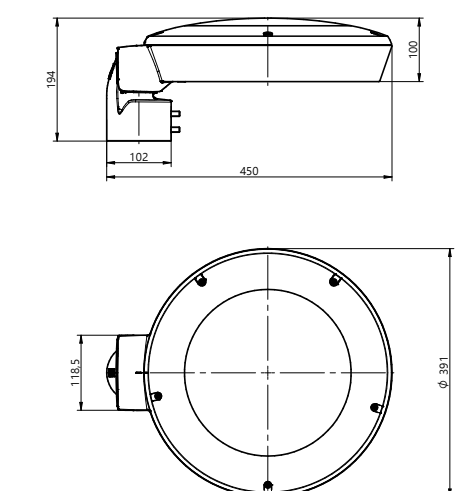


CityVario Asymmetrical, post top
BPS301

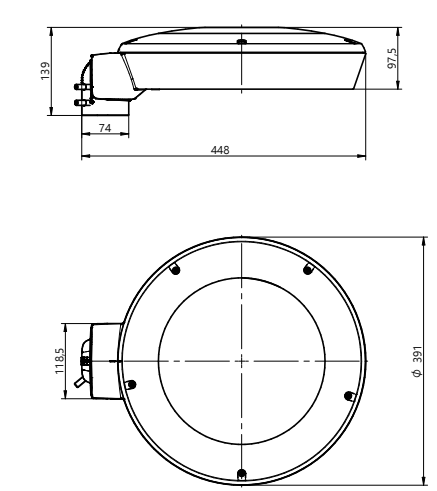
PC cover, spigot Ø60



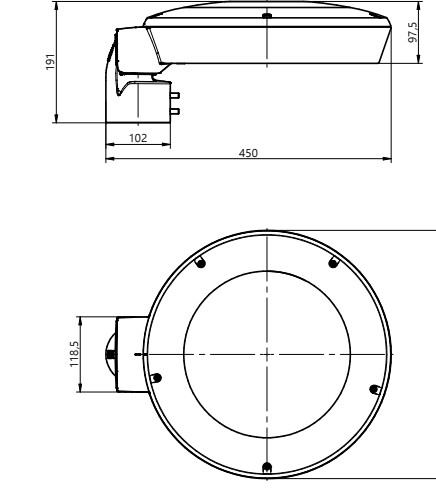
PC cover, spigot Ø76



Alu cover, spigot Ø60



Alu cover, spigot Ø76



Putting Signify at the heart of our professional portfolio

Our professional luminaire portfolio is growing. With new Signify-branded outdoor innovations already available – and our full range of outdoor luminaires for the specification business transitioning to the Signify brand in 2026 – we are creating one clearer, stronger specification offering.

For you, this means:

- A future-ready portfolio under one leading brand
- Seamless integration with connected systems
- Proven performance, quality and compliance – at scale

One brand. One strong portfolio.



You and Signify – a reliable partnership

Signify is the world leader in connected LED lighting systems, software and services. We proudly bring to market the best lighting brands in the world, including Signify, Philips and Interact.

We believe in close cooperation before, during, and after every project. Our local teams provide the support and information you need—with flexible, on-time delivery and reliable product availability.

To help you stay ahead, the [Signify Lighting Academy](#) offers a comprehensive range of educational resources to grow your expertise and earn certification.

Our key brands in professional business



Our leading brand for the next-generation of sustainable innovations, covering connected lighting systems and components, as well as luminaires for specification projects.



Our IoT-connected systems and software suites designed for intelligent buildings and smart cities.



Our well-established brand for innovative, off-the-shelf lighting products, with excellent quality and high energy efficiency. Easy to install. Easy to connect.

Get more info on our products, services and tools:

[signify.com/installers](https://www.signify.com/installers)

[signify.com/specifier](https://www.signify.com/specifier)



Driven by responsible innovation

Signify and the Mercedes-AMG PETRONAS F1 Team share a passion for technology and a desire to push the boundaries of what is possible.

Our innovations in lighting serve the well-being and performance of the team, deliver powerful experiences, both trackside and at home, and help the team pursue its ambition to become one of the most sustainable in sport.

Learn more at

[signify.com/partnership](https://www.signify.com/partnership)

Signify is Official Lighting Partner of Mercedes-AMG PETRONAS F1 Team





the meaning of light