



Signify



CitySwan LED gen3
Bring visual guidance and
quality to your city

 interact
ready

 LEDgine

Contents

1. Meet CitySwan LED gen3
2. Benefits
3. Family overview
4. Application areas
5. Let your city shine with glow effect
6. Connectivity: Interact
7. Service tag
8. LEDgine
9. Product specifications



Meet CitySwan LED gen3

Designed by Danish architects Bjarne Schläger and Morten Weeke Borup, CitySwan LED gen3 will fit any city street or park across cities.

The simple and beautiful shape is designed around an ellipse. This gives a feeling of elegance and purity and render CitySwan LED gen3 as an inseparable part of the city's identity.

At night a soft glow will shape the design of the luminaire. This reveals CitySwan LED gen3 as a very comfortable and soft luminaire completely in peace with its surroundings.

The third generation of CitySwan LED integrates our latest round LED board for best-in-class performance and a wide range of color temperatures.

It can also be configured with the System Ready driver which gives the possibility to connect the luminaire via our Interact City proposition and add sensors on its bottom socket.

Finally, we improved the accessibility for an even easier maintenance.



Benefits

High quality of light

- Comfortable lighting without compromising on visibility and safety
- Wide choice of ambiances thanks to the different color temperatures and a good to high color rendering

Ready for connectivity

- All today's connectivity and dimming options
- Can be paired with lighting management systems and sensors.

Improved maintenance

- Quick and easy installation with access to all relevant documents on site thanks to Signify Service tag
- Best in class for efficiency and performance in a wide range of applications.

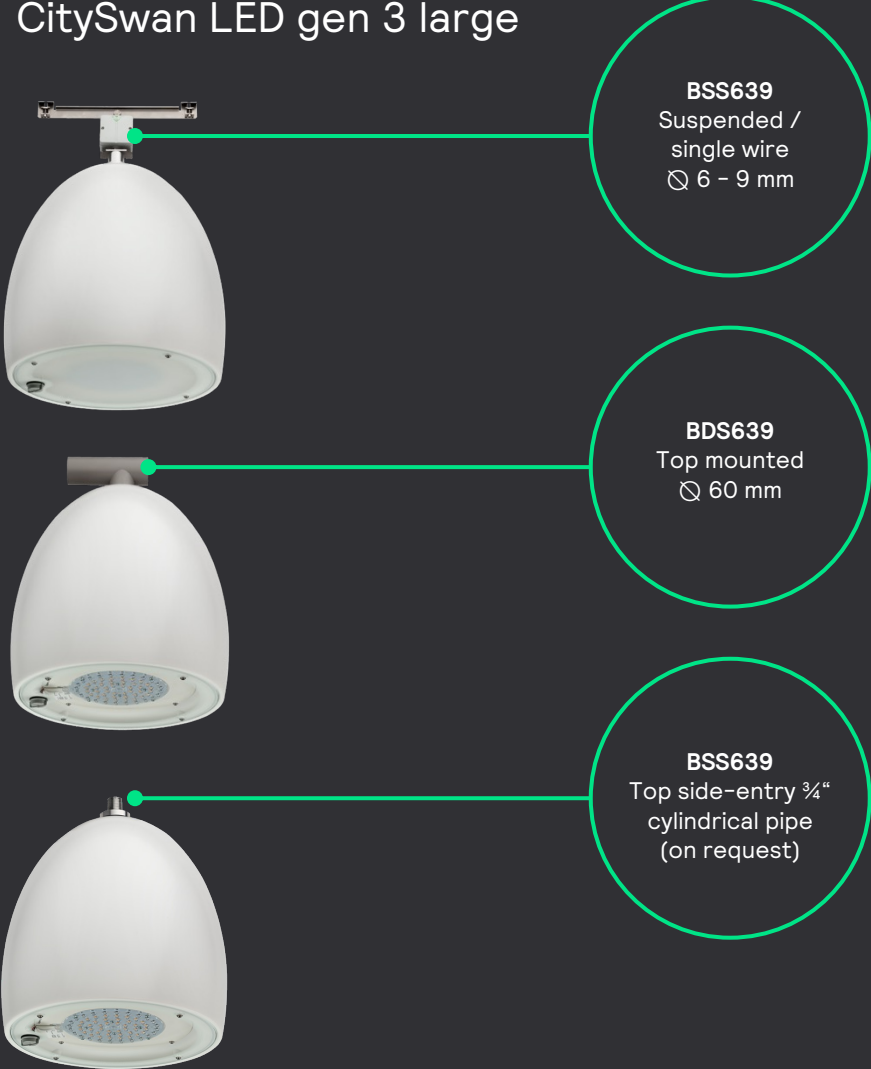


Family overview

CitySwan LED gen 3 small



CitySwan LED gen 3 large



Application areas

CitySwan LED gen3 suits a wide range of applications, from city center to residential areas and narrow paths.

Residential areas

- Residential street
- Cycle path and footpath
- Square, park and playground
- Parking area

City center

- Side street
- Square, park and playground
- Cycle path and footpath
- Shopping and pedestrian area





Let your city shine with glow effect

Lighting needs to do more than just delivering illumination during nighttime.

Thanks to glow effect CitySwan LED gen3 offers guidance, comfort and creates a safe environment for every citizen.

Glow effect highlights luminaire's elegant design and shape during nighttime.

The static glow effect is obtained thanks to spill light from the LED board canopy.

Customize your city with dynamic uplift

Beyond illumination, cities want to create their own signature, emphasizing on their unique character.

Thanks to dynamic RGBW you can remotely customize your city's lighting to any color of your choice via the dedicated app or Pharos. Our dynamic RGBW Android app gives you the possibility to specify colors based on a calendar and assign your choices to selected group(s) of luminaires.

Whether you want to celebrate New Year's Eve, dress up for Halloween or raise awareness on a social issue we are here to help you light up your city for any occasion. Dynamic RGBW will not only create a unique atmosphere relevant to every event, but it can also guide both citizens and tourists to the exact location.



Future-proofed and system-ready

CitySwan LED gen3 is system-ready. With a universal socket on the top and/or bottom of each luminaire, you simply click in controllers or sensors to activate new applications.

- Scale up to meet future tech requirements.
- Flexible – each luminaire has one or two SR sockets.
- Rapid plug and play installation.
- Enables smart city applications.



Interact for smart lighting

With Interact, it's easier than ever to realize the benefits of smart lighting: higher energy savings, improved space utilization, easy maintenance – and a big step towards achieving sustainability goals.

General benefits

- Open APIs for an easy integration in other city management systems
- No additional (DALI) control wires needed
- Quick to install and ready to use in a few clicks

Sustainable

- Enable instant energy and cost savings
- Reduce CO₂ emission and material waste

Smart

- Benefit from remote control and monitoring and reporting capabilities
- Explore the options to find further energy savings by dimming, time schedules and grouping light points
- Use data to make better informed decisions more quickly

Safe

- Set the right conditions to ensure comfortable lighting and increased vision
- Get informed quickly to enable timely and cost-effective maintenance

[Discover Interact for area lighting](#)

This is all you need for your smart lighting system



CitySwan LED gen3



Software applications

Components overview and serviceability

Step 1

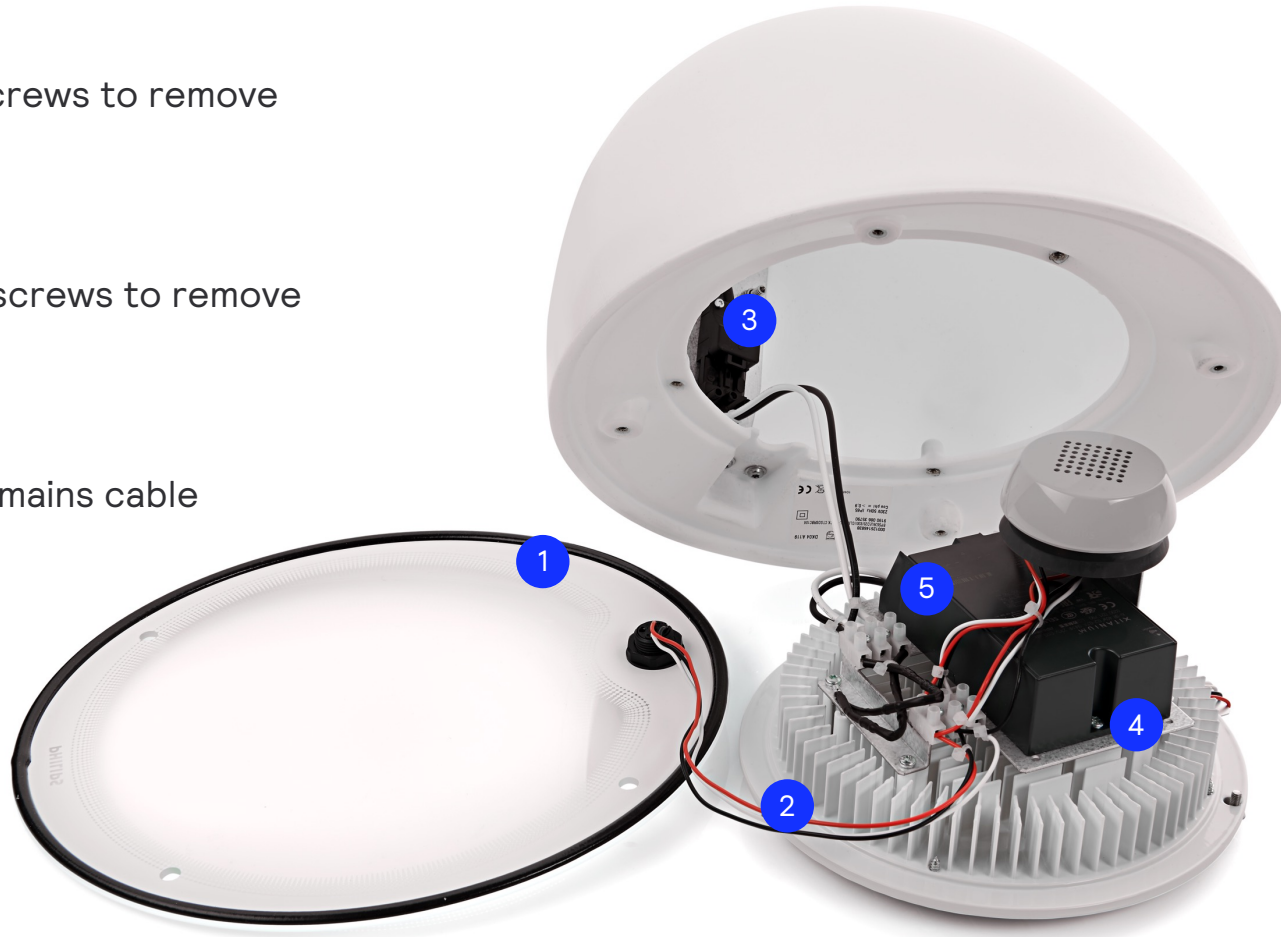
Unscrew four screws to remove the glass.

Step 2

Unscrew three screws to remove the gear tray.

Step 3

Disconnect the mains cable connector.



Step 4

Unscrew two screws to remove the driver.

Step 5

Detach the wires with click connectors. Install the new driver.

Step 6

Loosen eight screws and remove the LED board.

Step 7

Reassemble in reverse order.

Signify Service tag

- A unique QR code-based LED luminaire asset identification system
- Providing detailed information on specification and spare parts, simply by scanning the code on the packaging or luminaire with the Signify Service tag app.
- The system simplifies the installation and maintenance of lighting infrastructure by utilizing cloud technology.
- Service tag also plays a key role in the circular design of our lighting solutions, as it extends their service life and reduces maintenance efforts, ensuring efficient servicing and avoiding waste.



Your benefits at a glance:



Easy installation
and commissioning



Simplified
maintenance



Asset
management

Learn more at [signify.com/global/service-tag](https://www.signify.com/global/service-tag)

Signify Service tag: Installation



#1. Download the app

Download the Service tag app from the App store or Play store on your mobile device (iOS or Android).



#2. Register the luminaire

Register the luminaire by simply scanning the QR code on the packaging or luminaire. The system automatically identifies the type of each luminaire.



#3. Create a group QR code

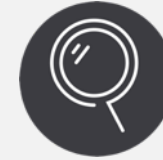
If you have multiple luminaires, it's possible to use the Service tag app to combine individual luminaires into a group. Each group will have its own unique group QR code.



#4. Luminaire information

Scan the QR code on your luminaire for easy access to the installation manual.

Maintenance



#1. Spare parts identification

Use the Service tag app to view a luminaire's spare parts, which contains all necessary information for quick ordering.



#2. Spare parts programming

Quickly program a spare driver using the Service tag app—without needing a faulty driver on hand. Scan the QR code of a luminaire with your device, put your mobile device on the spare driver, press “Program” and the spare driver receives the right settings for this specific luminaire.



Learn more at
signify.com/global/service-tag

©ignify

©signify

The right solution for outdoor applications – LEDgine

Our latest generation LEDgine optimized light engine offers the flexibility to further optimize your preferences as to luminaire efficacy and cost aspects.

The LEDgine optimized light engine covers a wide range of standard fluxes and a full range of standard optics is available to cover a wide range of applications.

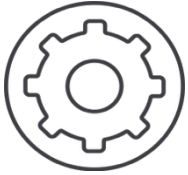
Moreover, where needed we can support you to tune and optimize your project solutions as to fluxes and light distributions further with our exclusive tools. The three pillars that characterize the light engines are standardized optics, standard engines and tailor-made solutions.

Luminaire efficacy optimization:

- LED count and glass options optimizing system lm/W supporting high energy savings
- High flux per area enabling use of compact lower cost luminaire sizes



LEDgine

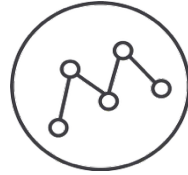


Standardized optics

- A perfect application fit

A wide range of light distributions ensure a perfect fit for many applications.

The optics offer flexibility, enabling standardization over applications with a good performance across a wide range of geometries – as well as design parameters such as tilt and overhang. The optics comply with national and European road lighting standards.



Standard engines

- High performance across portfolio

Using a standard engine across different luminaire ranges means you can optimally benefit from the latest LED upgrades without changing light distributions, so design continuity is assured. Standard flux packages are pre-defined across product ranges. Flux and thereby energy minimization is achieved by using best possible lumen maintenance (up to L98 or CLO solutions). The LEDgine optimized engine benefits from more LEDs per area contributing to more compact and cost-effective solutions.

Standard engines minimize spare components which are easy to configure by using our Service tag application.



Tailor-made solutions

- Tuning to project preferences

We can support you with our exclusive Lucia tool to customize solutions which of course can become your standard!

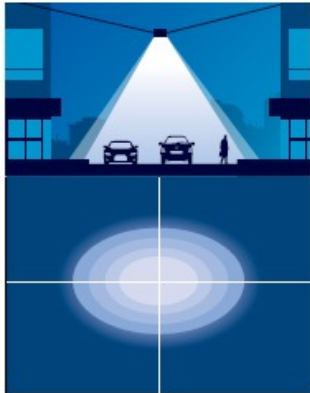
Using **a variety of LED counts, it enables to build the exact required flux** in a perfect balance between energy consumption, luminaire cost/type and operational life. Based on project parameters the best optical fit can be selected and when required **light distributions can be customized for best application fit** and to maximize energy savings.

Round LEDgine Optics and comfort options

A choice of 6 different optics to perfectly match with your application

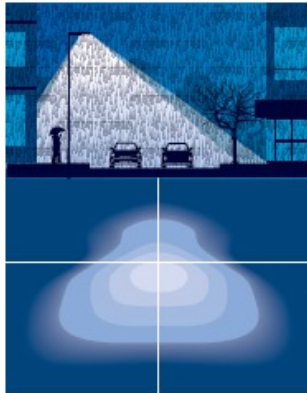
LEDgine optics for roads and streets

DSW



Distribution Road Symmetric
(for wire suspension)

DK



Distribution Wet Road

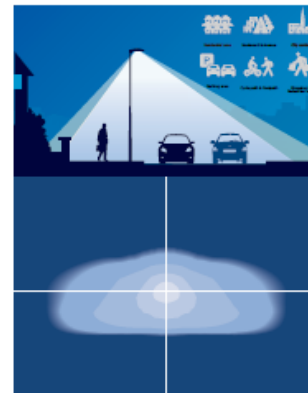
MDA



Distribution Asymmetrical

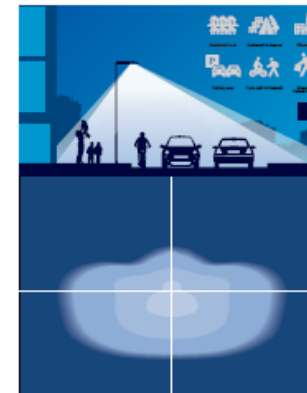
LEDgine optics for residential streets

MDW



Distribution Street Wide

MDM



Distribution Street Medium

MDS



Distribution Symmetric

Round LEDgine Optics and comfort options

Options for a best-in-class comfort solution

The round LEDgine in CitySwan LED gen3 is slightly lifted to deliver excellent comfort lighting. CitySwan LED gen3 can be equipped with a round louver to avoid light trespassing back. It can also be equipped with a satinice diffuser for best-in-class comfort!



Product specifications

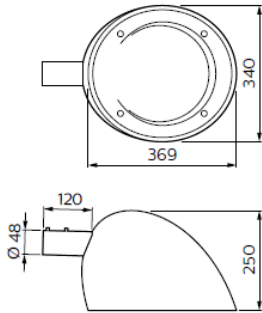
Specifications

CitySwan LED gen3	CitySwan LED gen3 small	CitySwan LED gen3 large
Material	Housing: PE, rotational molded, Front glass: Tempered flat glass silk screen printed	
Color	Opal white with glow effect or light-tight RAL colors on request	
Marine Salt Protection (MSP)	Yes	
Lumen output	2,000 lm to 10,000 lm	4,000 lm to 14,000 lm
Power consumption	12.8 W to 84 W	28 W to 116 W
System efficacy	65 - 156 lm/W	
Color temperature	2200, 2700, 3000 or 4000 K	
Color Rendering Index (CRI)	>80 (3000 K), >70 (2200, 2700, 3000 and 4000 K)	
Optics	6 different optics: Distribution street medium (MDM), wide (MDW), asymmetrical (MDA), symmetric (MDS), distribution road symmetric (DSW, for wire suspension), distribution wet road (DK)	
IK- / IP-Rating	IK08 / IP66	
Isolation class	Class II (class I on request)	
Surge protection	6 kV (10 kV on request)	
Lifetime – LED	100,000 h	

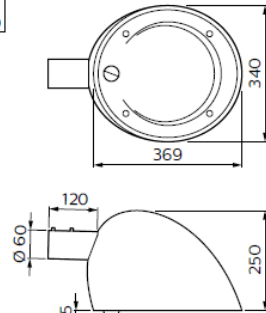
CitySwan LED gen3	CitySwan LED gen3 small	CitySwan LED gen3 large
Lumen maintenance	L95 to L98	
Lifetime – driver	100,000 h (0,5 % failure / 5,000 h)	
Weight	7,3 kg	9,3 kg
Wind area (Scx)	Small = 0,08 m ²	Large = 0,21 m ²
Mounting types	Post-top ø60 mm; side entry ø48 or 60 mm; top side-entry 3/4" cylindrical pipe thread	Suspended for single wire ø6-9 mm ; top-mounted for ø60 mm arm
CLO	Yes	
System Ready (SR) option	Yes	
Top and bottom SR socket option	Yes	
Control options	Interact City, DALI, Line Switch, DynaDimmer or LumiStep	
RGBW option	Yes	
Comfort accessories	Round louver Satin diffuser for comfort	
Operating temperatures	-40°C to +25°C	
Certification	CE	

Dimensions

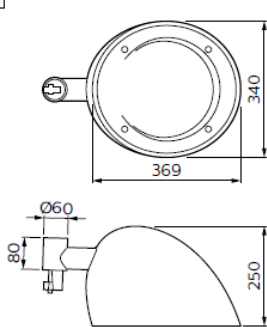
CitySwan LED gen3 small



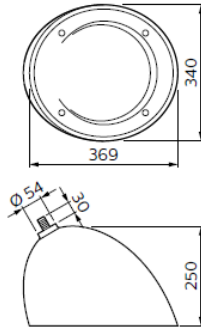
BRS639
Side entry $\varnothing 48$ mm



BRS639
Side entry $\varnothing 60$ mm

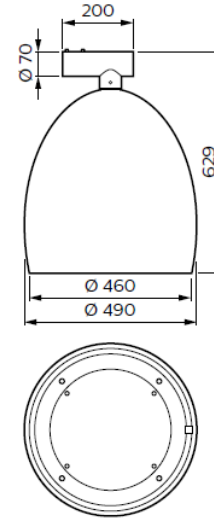
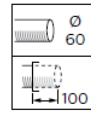


BPS639
Post-top $\varnothing 60$ mm

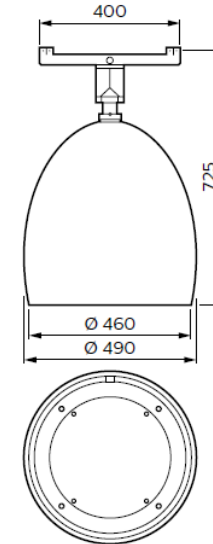


BWS639
Top side-entry 3/4" cylindrical pipe
thread for dedicated wall brackets

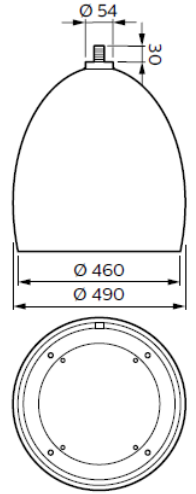
CitySwan LED gen3 large



BDS639
Top mounted $\varnothing 60$ mm



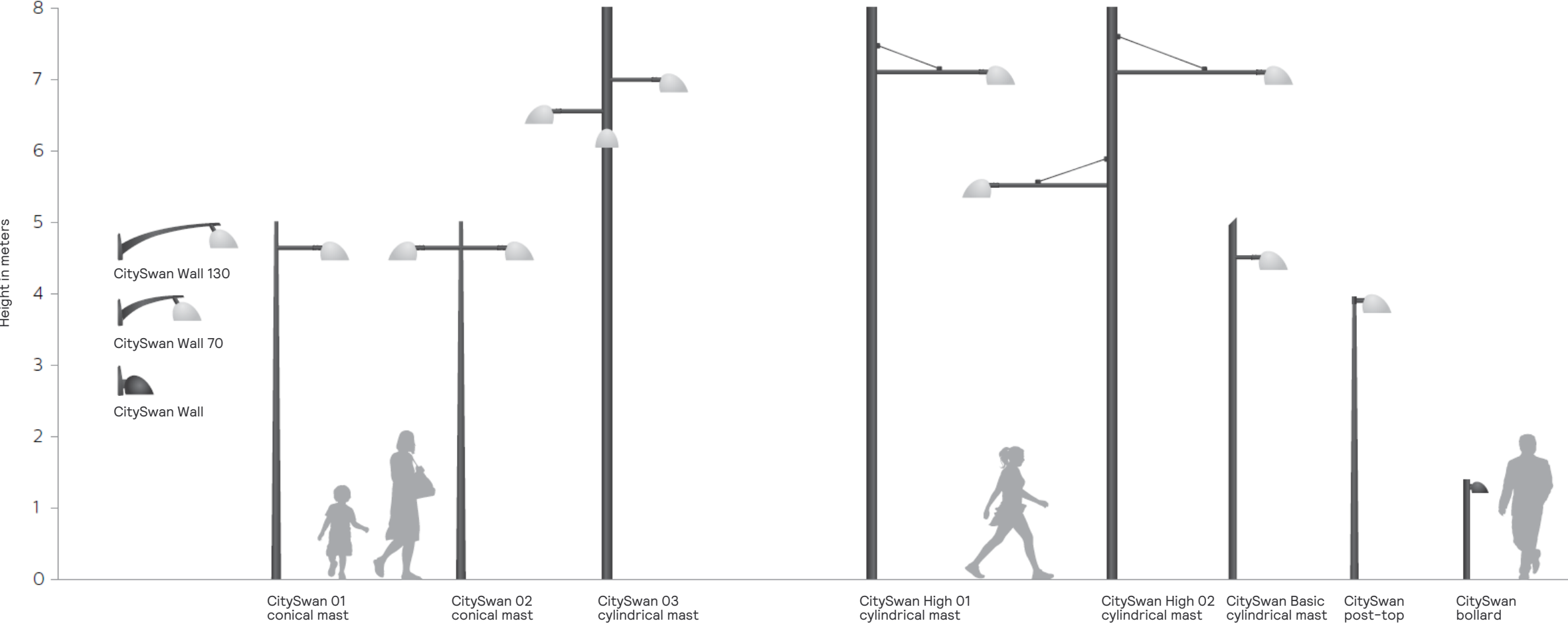
BSS639
Suspended/single wire $\varnothing 6-9$ mm



BSS639
Top 3/4" cylindrical pipe
(on request)

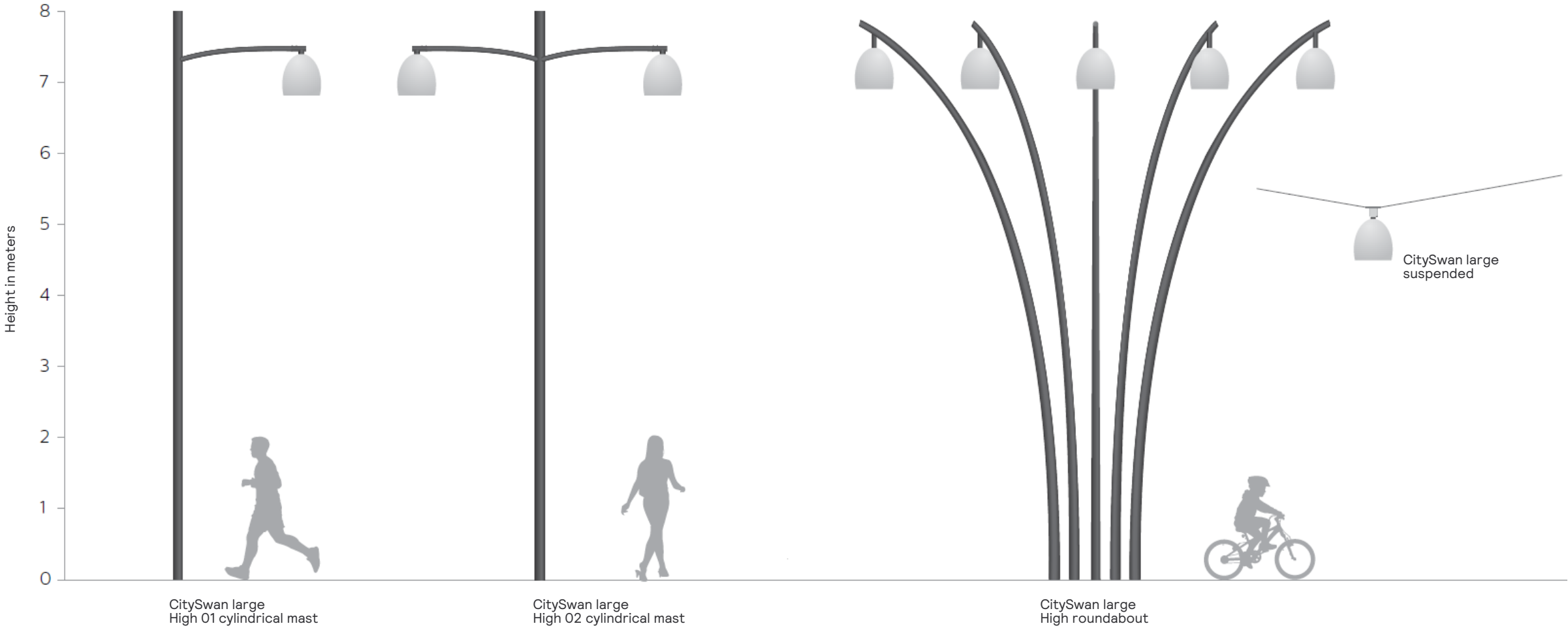
Complete sets – Dedicated masts and brackets

CitySwan LED gen3 small



Complete sets – Dedicated masts and brackets

CitySwan LED gen3 large



You and Signify – a reliable partnership

Signify is the world leader in connected LED lighting systems, software and services. We proudly bring to market the best lighting brands in the world, including Signify, Philips and Interact.

We believe in close cooperation before, during, and after every project. Our local teams provide the support and information you need—with flexible, on-time delivery and reliable product availability.

To help you stay ahead, the [Signify Lighting Academy](#) offers a comprehensive range of educational resources to grow your expertise and earn certification.

Get more info on our products, services and tools:

[signify.com/installer](https://www.signify.com/installer)

[signify.com/specifier](https://www.signify.com/specifier)

Our global brands

 Signify

Signify represents our commitment to sustainable innovation. As our leading brand for connected lighting systems, luminaires and components for the specification project business, Signify solutions serve the segments where we collaborate most closely with our customers.

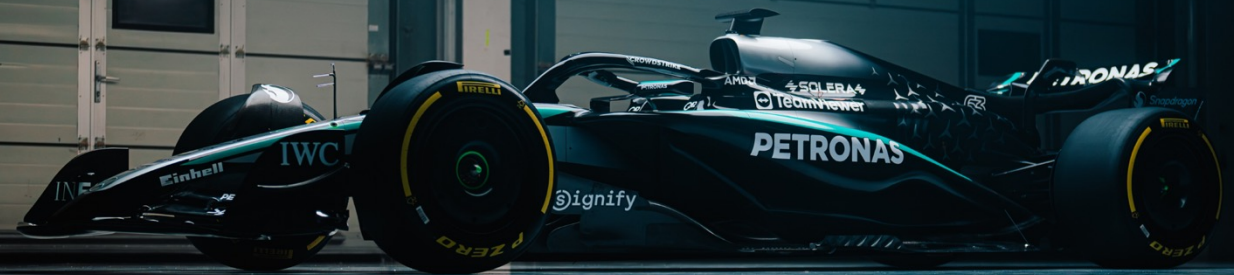
 Signify interact

Signify Interact is our IoT software platform for managing smart lighting systems and unlocking the value of the data they collect. Easy to install and configure, Interact supports a wide range of applications—from small offices to entire cities.

PHILIPS

Philips stands for quality and energy efficiency in lighting. It is our leading brand for innovative, off-the-shelf lighting products for professionals and consumers alike.

Get into pole position with high-performance, energy-efficient LED



Signify is Official Lighting Partner of
Mercedes-AMG PETRONAS F1 Team

Signify



Official Lighting Partner

AMG
PETRONAS
FORMULA ONE TEAM

@signify

the meaning of light