



Signify

CityCharm

Combining ambiance and
optimum performance

interact
ready

LEDgine

Contents

1. Meet CityCharm
2. Application areas
3. Family range
4. Visual comfort
5. LEDgine
6. Connectivity: Interact
7. Service tag
8. Product specifications

Meet CityCharm

CityCharm is designed for use in urban areas where comfortable lighting, ambiance and design play an important role.

Its unobtrusive appearance makes it a timeless, future-proof range that is ideal for residential areas, parks, footpaths and cycle lanes, where visual comfort combined with maximum efficiency is key.

With three iconic designs and customizable accessories, CityCharm lets you create a signature look that enhances your area's ambiance—day and night.



Benefits



Excellent value for money

CityCharm is the perfect solution for renovation areas and for new installations. Its complete design, high-quality finishing and optical performance are state of the art and make the product a future-proof solution for residential streets, parks, squares and city centers.



Comfort at its best

Whether you prefer optimal performance or comfortable lighting or something in between CityCharm is the right choice for you. A broad range of optical possibilities and several optical diffusing tools enable you to find the best balance.



Customizable

CityCharm comes in multiple designs and offers various brackets and poles to enhance the charm of your city in the best way. It even enables you to modify the size of the bowl in a smart way.



Respectful of nature

CityCharm is designed with an awareness of the impact of light on the environment. By limiting the upward emission of light, CityCharm helps to preserve the integrity of the dark night sky.

Application areas

CityCharm incorporates all the necessary functional aspects of lighting while also having a strong focus on the emotional value of light. For every application in the city, we do have several solutions to inspire and enhance your city, while meeting your demands and beyond.



Residential areas

- Residential street
- Cycle path and footpath
- Square, park and playground
- Parking area

City center

- Side street
- Square, park and playground
- Cycle path and footpath
- Shopping and pedestrian area



Family range

CityCharm Cordoba

Post-top
Ø 60 / 76 mm



CityCharm Cone

Post-top
Ø 60 / 76 mm



CityCharm Fluid

Post-top
Ø 60 / 76 mm



Dedicated brackets

- Tenon versions, single arm or double arm
- For standard poles top Ø 60 mm
- Wall-mounted version



Dedicated post-top bracket

- With tenon
- For standard poles top Ø 60 mm

Family range

CityCharm + dedicated complete sets

All sets are available with CityCharm Cordoba, Cone and Fluid



YHM490 – CityCharm dedicated pole =

1. CityCharm + Dedicated post top bracket + Accante Pole
2. CityCharm + Dedicated single arm bracket + Accante Pole
3. CityCharm + Dedicated double arm bracket + Accante Pole
4. CityCharm + Dedicated wall mounted bracket

CityCharm + retrofit sets*

All sets are available with CityCharm Cordoba, Cone and Fluid



YHM490 – CityCharm dedicated pole =

1. CityCharm + Dedicated post top bracket
2. CityCharm + Dedicated single arm bracket (double arm bracket available as well)

*Retrofit on existing poles with top diameter 60mm with inserts to fix the tenon part of the bracket

Comfort at its best

Whether you prefer optimal performance or comfortable lighting or something in between, CityCharm is the right choice for you. A broad range of optical possibilities and several optical diffusing tools enable you to find the best balance.

ClearGuide LEDgine



For excellent visual guidance and high vertical illumination

- For park / open area applications / A and S optic

Round LEDgine



GentleBeam – Diffusing element with low impact on distribution

- For more visual comfort
- For street applications / DM, DW and DV optic



Standard diffusing element

- For park / open area application / A and S optic



Back louver

- To block back light (light trespassing)



Using a standard diffuser

Without diffuser



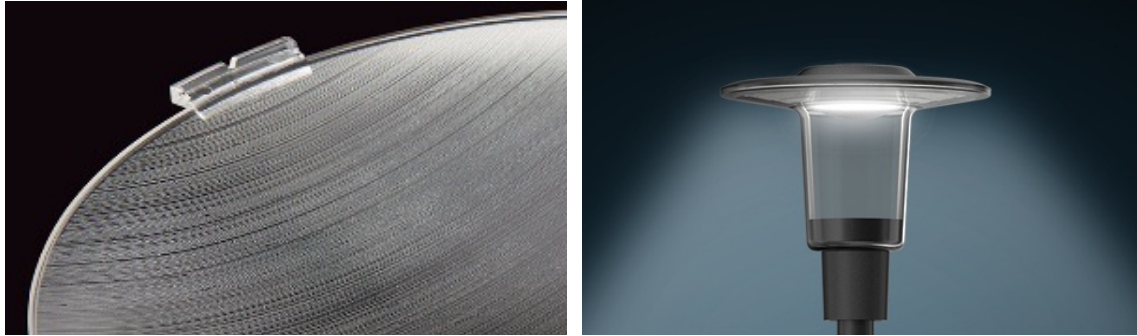
CityCharm without diffusing element delivers the **best energetic performance**. It is an excellent solution for **residential streets** and many other applications.

With diffuser



CityCharm with diffusing plate can be an option where **more visual comfort is important**. For example, in **parks or squares and streets in the city centers**. It gives a **soft diffuse glow** which can reveal greenery in parks noteworthy facades in city centers.

Visual comfort with GentleBeam



GentleBeam is an optical system that delivers excellent visual comfort compared to a bare LED board, while maintaining performance.

This unique optical system consists of a cover with a uni-dimensional micro-texture (micro linear prisms) that enhances visual comfort while being very efficient, with only **5-10% less efficient** distribution of the light (versus 10-30%).

GentleBeam gives the best balance between high comfort and high performance.

GentleBeam versus no diffuser



Road width: 7 m
Mounting height: 5 m
Overhang: 1 m

Lighting class S5
 $E_{ave} \geq 3 \text{ lux}$
 $E_{min} \geq 0.6 \text{ lux}$

CityCharm without diffusing support delivers the best energetic performance.

CityCharm BDS490 LED60 DV
Spacing: 48 m
W / lux / m²: 0.04

CityCharm with Gentle Beam delivers comfort while maintaining outstanding performance.

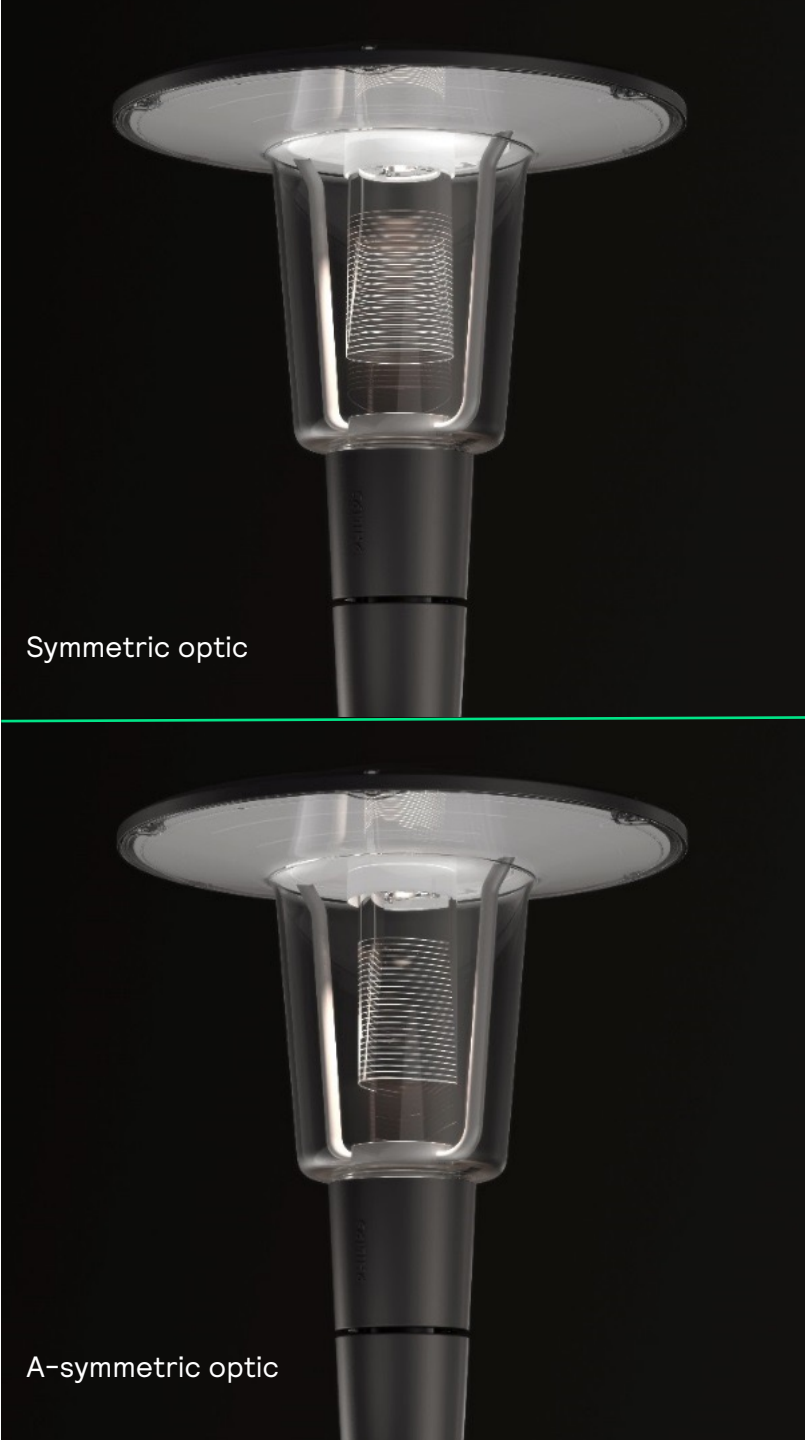
CityCharm BDS490 LED70 DV DF S
Spacing: 46 m
W / lux / m²: 0.05

Visual comfort via ClearGuide

ClearGuide is a combination of a new LED engine and two unique optics (symmetric and asymmetric). The optics are vertically placed, therefore emitting the light throughout the entire bowl in the vertical plane. This results in an improved visual guidance and softens the perception of glare. ClearGuide technology fits CityCharm cone and cordoba designs.

Benefits and features

- Excellent visual comfort and outstanding performances
- Visual guidance through the unique and comfortable vertical glow
- Increased safety through vertically oriented illumination improving facial recognition



Symmetric optic

A-symmetric optic

Solutions for reducing light trespass

Back louver

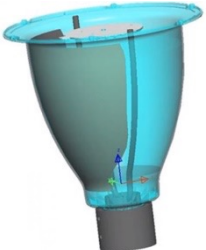
Exemplary application:

- Residential street/ city center
- DW optics; H=4m; 2500lm; 2m from the facade

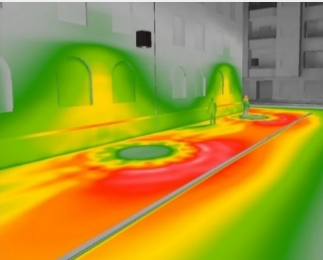


Mask (MK)

- Fluid version only

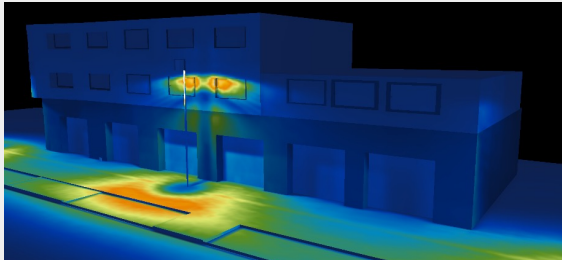


Without louver

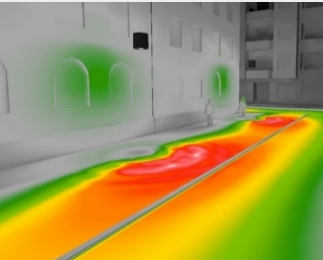


For some application close to buildings of citizens light can trespass the windows resulting in uncomfortable situations.

Without mask

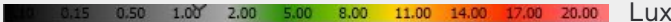
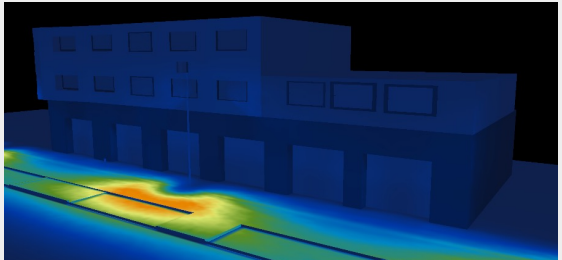


With louver



Back louver can be installed after installation. It maintains the relevant distribution on the street but prevents light trespassing any buildings close by.

With mask



Customize your style

CityCharm offers different tools that offer you the possibility to optimize its day and night appearance.

Multiple designs: Cone, Cordoba and Fluid. All three have their own identity for more classical or modern architectural contexts.

Modify the volume: CityCharm can be ordered with or without grey inner part. A larger volume will be perceived without the grey inner part or a more compact appearance with the inner part.

Color effects: Different inner parts can be chosen to give a personal signature to the streetscape or link to a specific color.



Designed to endure a lifetime

Built for longevity and effortless maintenance

- Lifetime: 100,000 hours (with L-value between 96 and 98 @25°C)
- Easy access to driver: < 2 minutes (all T20 torx screws)
- Access to LED board by removing 10 screws

Improved robustness

- Outstanding impact resistance:
 - Fluid: IK11
 - Cone and Cordoba: IK10
- Small holes are provided to allow water to drain easily
- Fluid version:
 - Increased thickness of the bowl (4 mm) for better resistance
 - Inner ribs for additional resistance



Lighting for nature

CityCharm Fluid and PCN versions of Cordoba and Cone have been specifically designed to meet most of the environmental regulations in place around the globe for dark night preservation.

- The height of the Fluid bowl optimizes the light distribution while its specific shape limit the reflection inside the bowl to its minimum.
- The cable tubes and cable box are painted black to avoid undesired light reflection.
- With Fluid product versions, over 95% of the luminous flux is emitted into the lower hemisphere, concentrated within a 151° cone (CIE Code No. 3), rather than being spread across the entire lower hemisphere, and the upward lighting ratio (ULR) is less than 1%.



The right solution for outdoor applications – LEDgine

Our latest generation LEDgine optimized light engine offers the flexibility to further optimize your preferences as to luminaire efficacy and cost aspects.

The LEDgine optimized light engine covers a wide range of standard fluxes and a full range of standard optics is available to cover a wide range of applications.

Moreover, where needed we can support you to tune and optimize your project solutions as to fluxes and light distributions further with our exclusive tools. The three pillars that characterize the light engines are standardized optics, standard engines and tailor-made solutions.

Luminaire efficacy optimization:

- LED count and glass options optimizing system lm/W supporting high energy savings
- High flux per area enabling use of compact lower cost luminaire sizes



LEDgine

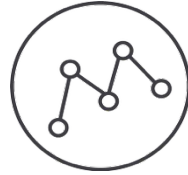


Standardized optics

- A perfect application fit

A wide range of light distributions ensure a perfect fit for many applications.

The optics offer flexibility, enabling standardization over applications with a good performance across a wide range of geometries – as well as design parameters such as tilt and overhang. The optics comply with national and European road lighting standards.



Standard engines

- High performance across portfolio

Using a standard engine across different luminaire ranges means you can optimally benefit from the latest LED upgrades without changing light distributions, so design continuity is assured. Standard flux packages are pre-defined across product ranges. Flux and thereby energy minimization is achieved by using best possible lumen maintenance (up to L98 or CLO solutions). The LEDgine optimized engine benefits from more LEDs per area contributing to more compact and cost effective solutions.

Standard engines minimize spare components which are easy to configure by using our Service tag application.



Tailor-made solutions

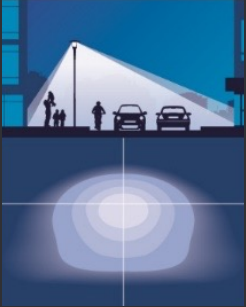
- Tuning to project preferences

We can support you with our exclusive tools to customize solutions which of course can become your standard!

Using **a variety of LED counts it enables to build the exact required flux** in a perfect balance between energy consumption, luminaire cost/type and operational life. Based on project parameters the best optical fit can be selected and when required **light distributions can be customized for best application fit** and to maximize energy savings.

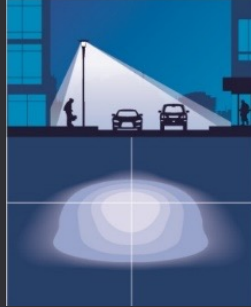
Lighting distributions

DW | Distribution Wide



S and CE classes for road and street lighting

DM | Distribution Medium



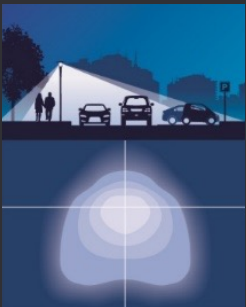
S and CE classes for road and street lighting

DS | Distribution Symmetrical



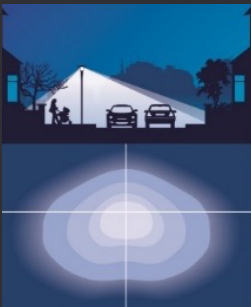
S class for area and square lighting

DA | Distribution Asymmetrical



S class for area and square lighting

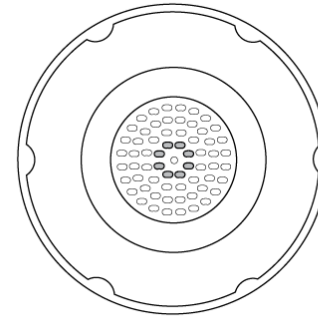
DV | Distribution Wide for vertical illuminance



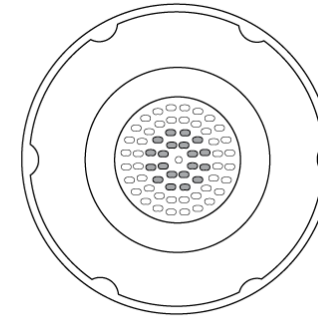
P class complying with ROVL standards

3 different LED configurations

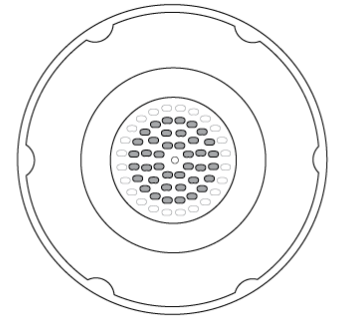
To optimize lumen tuning performance



LED10-LED20 (25 in 740)
8 LEDs



LED20 (722) - LED50
20 LEDs



LED50 (722, 827) - LED100
40 LEDs

Interact for smart lighting

With Interact, it's easier than ever to realize the benefits of smart lighting: higher energy savings, improved space utilization, easy maintenance – and a big step towards achieving sustainability goals.

General benefits

- Open APIs for an easy integration in other city management systems
- No additional (DALI) control wires needed
- Quick to install and ready to use in a few clicks

Sustainable

- Enable instant energy and cost savings
- Reduce CO₂ emission and material waste

Smart

- Benefit from remote control and monitoring and reporting capabilities
- Explore the options to find further energy savings by dimming, time schedules and grouping light points
- Use data to make better informed decisions more quickly

Safe

- Set the right conditions to ensure comfortable lighting and increased vision
- Get informed quickly to enable timely and cost-effective maintenance

[Discover Interact for area lighting](#)

This is all you need for your smart lighting system



CityCharm
with Interact node



Software applications

Benefits of system-ready architecture



Future-proof upgrades

System-ready luminaires can be paired with sensors and controllers now or later. A city solution that is completely flexible and scalable.



Plug and play

Designed for hassle-free installation, controllers and sensors can be mounted without opening the luminaire.



Standardized technology

System-ready luminaires can be paired with sensors. Thanks to Zhaga standardization and the SR & ZD4i Certified program, you will have access to preferred technology, allowing you to make use of innovations from different suppliers.



Aesthetic design

The small, unobtrusive form factor can be mounted discreetly on luminaires.



Open innovation platform

Using this new system-ready architecture gives you access to new innovations that could enhance your lighting even further in the future.

Signify Service tag

- A unique QR code-based LED luminaire asset identification system
- Providing detailed information on specification and spare parts, simply by scanning the code on the packaging or luminaire with the Signify Service tag app.
- The system simplifies the installation and maintenance of lighting infrastructure by utilizing cloud technology.
- Service tag also plays a key role in the circular design of our lighting solutions, as it extends their service life and reduces maintenance efforts, ensuring efficient servicing and avoiding waste.

Your benefits at a glance:



Easy installation
and commissioning



Simplified
maintenance



Asset
management



Learn more at [signify.com/global/service-tag](https://www.signify.com/global/service-tag)

Signify Service tag: Installation



#1. Download the app

Download the Service tag app from the App store or Play store on your mobile device (iOS or Android).



#2. Register the luminaire

Register the luminaire by simply scanning the QR code on the packaging or luminaire. The system automatically identifies the type of each luminaire.



#3. Create a group QR code

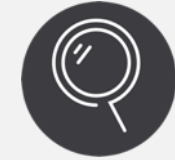
If you have multiple luminaires, it's possible to use the Service tag app to combine individual luminaires into a group. Each group will have its own unique group QR code.



#4. Luminaire information

Scan the QR code on your luminaire for easy access to the installation manual.

Maintenance



#1. Spare parts identification

Use the Service tag app to view a luminaire's spare parts, which contains all necessary information for quick ordering.



#2. Spare parts programming

Quickly program a spare driver using the Service tag app—without needing a faulty driver on hand. Scan the QR code of a luminaire with your device, put your mobile device on the spare driver, press “Program” and the spare driver receives the right settings for this specific luminaire.



Learn more at
signify.com/global/service-tag

©ignify

©signify

Product specifications

Product specifications | CityCharm round LEDgine

Product configuration	CityCharm Cordoba / Cone / Fluid
Type	BDS490 (Cordoba), BDS491 (Cone), BDS492 (Fluid)
Light source	Built-in LED module
Color temperature	3000K (warm white), 4000K (neutral white), 2700K (warm white), 2200K (warm white)
Color Rendering Index (CRI)	70 (neutral white), 80 (warm white)
System flux	Depending on LED configuration: 500 to 8,300 lm
System power	Depending on LED configuration: between 7W and 85W
Luminaire efficacy	66 - 150 lm/W
Lumen maintenance	Between L96 and L98 at 100,000 hours @Ta 25°C
CLO	Optional
Warranty	5 years
Optics	Distribution Medium (DM), Distribution Wide (DW), Distribution Symmetrical (S), Distribution A-symmetrical (A), Distribution Vertical (DV)
Bowl	Polycarbonate, UV resistant
Installation	Post-top: Ø 60 / 76 mm No adjustable tilt angle
System-ready interface	Nema, Zhaga

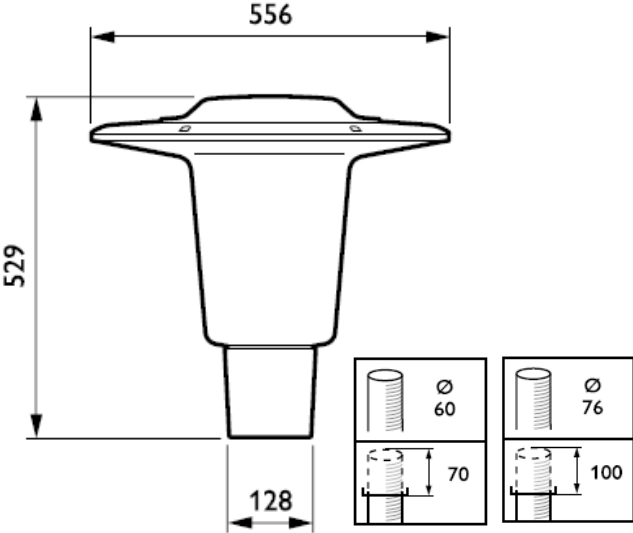
Driver	Xitanium driver
Control options	LumiStep, DynaDimmer, LineSwitch, DALI, mains dimming, coded mains, Interact
Mains voltage	220-240 V / 50-60 Hz
Electrical class	I, II
Material	Housing: high-pressure, die-cast aluminum, coated Housing: high-pressure die-cast aluminum, noncorrosive Bowl: polycarbonate, UV resistant Gasket: silicone rubber heat resistant Optics: plastic (PMMA)
Color	Ultra Dark Grey Other RAL or AKZO colors available on request
IP-rating	IP66
IK-rating	IK10, Fluid: IK11
Weight	11-12 kg (Cordoba or Cone); 13-14 kg (Fluid), depending on the configuration
ScX	Cone: 0.1155 m ² , Cordoba: 0.1124 m ² , Fluid: 0.21 m ²
Electrical connection	M20 cable gland with strain relief, for cable Ø 6-10 mm
Operating temperature range	-20°C < Ta < 35°C
Surge protection	6kV (standard), 10 kV (optional)
Maintenance	Access to the driver compartment, 3 screws

Product specifications | CityCharm ClearGuide

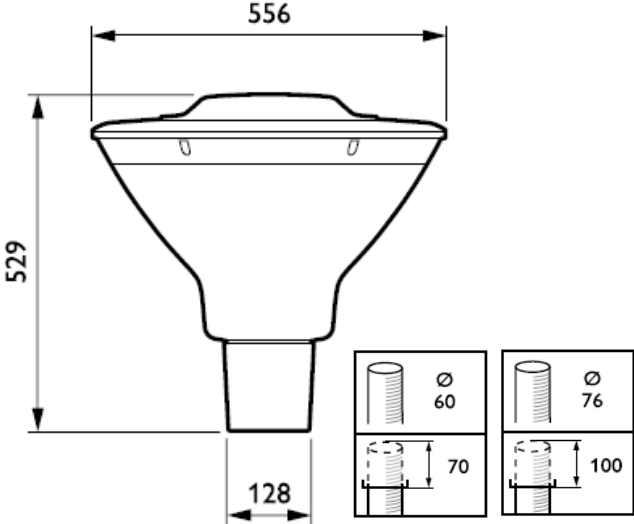
Product configuration	CityCharm ClearGuide
Type	BDS490 (Cordoba) – BSD491 (Cone) with ClearGuide
Light source	Integrated LED module
Color temperature	3000K (warm white), 4000K (neutral white),
Color Rendering Index (CRI)	70 (neutral white and warm white)
Luminous flux (System)	1,650 – 2,800 lm (warm white) 1,700 – 3,200 lm (neutral white)
Power (System)	16W – 33W
Luminaire efficacy (System)	up to 107 lm/W
Optic	Distribution symmetrical (S), distribution a-symmetrical (A)

Dimensions

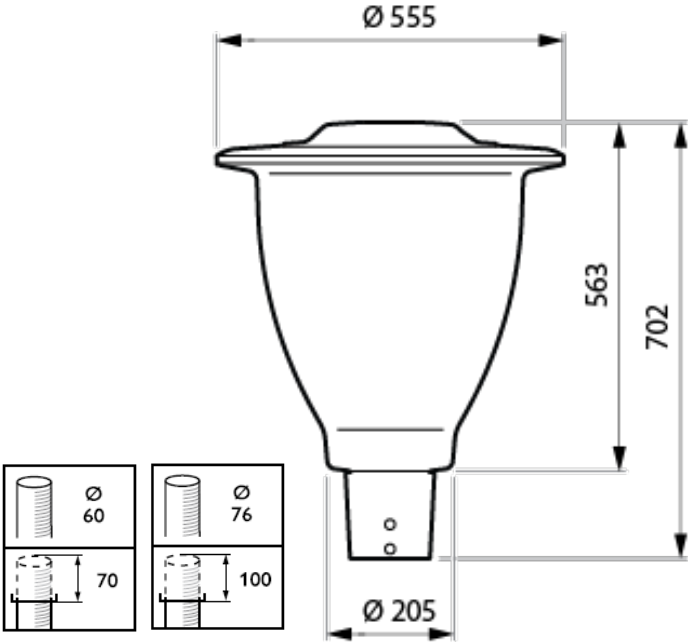
CityCharm Cordoba – BDS490



CityCharm Cone – BDS491



CityCharm Fluid – BDS492

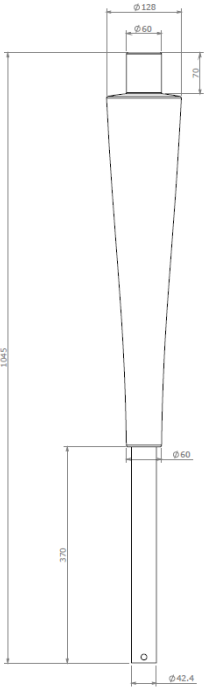


Product specifications poles and brackets

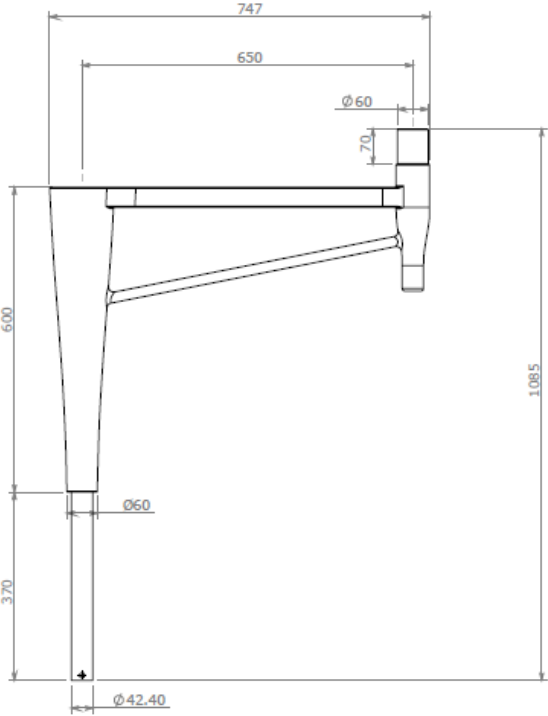
Poles and bracket	YHM490: Dedicated pole	JDP490: Dedicated post top bracket	JPP490: Dedicated bracket
Poles			
Material	Steel	NA	NA
Total pole height	3.6 m, 4.6 m and 5.6 m		
Installation type	Ground section and flange plate		
Color	Satin Silver Grey (close to RAL9006) Ultra Grey (close to RAL7022) Other RAL or AKZO color available on request		
Certification	CE certification in accordance with standard EN40		
Brackets			
Material	Aluminum	Aluminum	Aluminum
Mounting to luminaire	Post top Ø 60 mm	Post top Ø 60 mm	Post top Ø 60 mm
Tilt angle	0°	0°	0°
Color	Satin Silver Grey (close to RAL9006) Ultra Grey (close to RAL7022) Other RAL or AKZO color available on request	Satin Silver Grey (close to RAL9006) Ultra Grey (close to RAL7022) Other RAL or AKZO color available on request	Satin Silver Grey (close to RAL9006) Ultra Grey (close to RAL7022) Other RAL or AKZO color available on request
Certification	CE certification in accordance with standard EN40	CE certification in accordance with standard EN40	CE certification in accordance with standard EN40

Dimensions

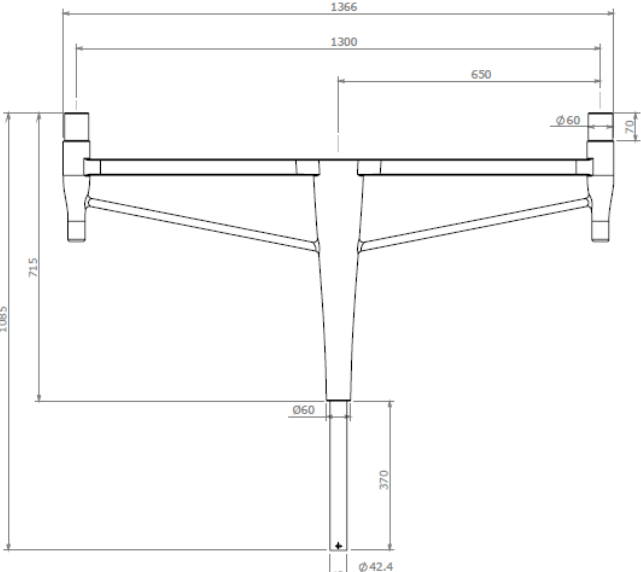
**JDP490 –
CityCharm dedicated
post-top bracket**



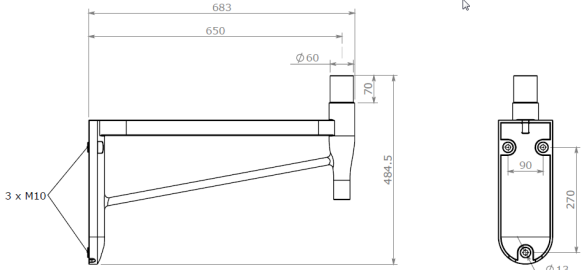
**JPP490 – CityCharm dedicated
single arm bracket**



JPP490 – Double arm bracket

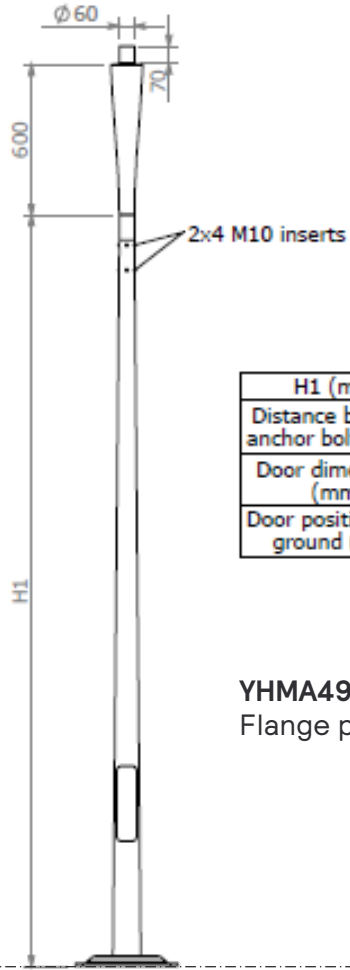


JPP490 – Wall-mounted bracket



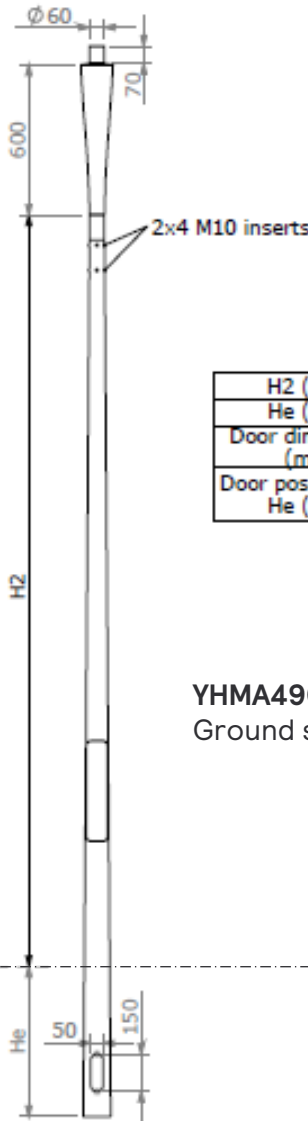
Fixation to wall with
3 x M10

Dimensions



H1 (mm)	3000	4000	5000
Distance between anchor bolts (mm)	200	200	200
Door dimensions (mm)	300x70	450x75	450x75
Door position from ground (mm)	400	500	500

YHMA490 – CityCharm dedicated pole
Flange plate version



H2 (mm)	3000	4000	5000
He (mm)	600	800	800
Door dimensions (mm)	400x85	400x85	400x85
Door position from He (mm)	500	600	600

YHMA490 – CityCharm dedicated pole
Ground section version

You and Signify – a reliable partnership

Signify is the world leader in connected LED lighting systems, software and services. We proudly bring to market the best lighting brands in the world, including Signify, Philips and Interact.

We believe in close cooperation before, during, and after every project. Our local teams provide the support and information you need—with flexible, on-time delivery and reliable product availability.

To help you stay ahead, the [Signify Lighting Academy](#) offers a comprehensive range of educational resources to grow your expertise and earn certification.

Get more info on our products, services and tools:

[signify.com/installer](https://www.signify.com/installer)

[signify.com/specifier](https://www.signify.com/specifier)

Our global brands

 Signify

Signify represents our commitment to sustainable innovation. As our leading brand for connected lighting systems, luminaires and components for the specification project business, Signify solutions serve the segments where we collaborate most closely with our customers.

 Signify interact

Signify Interact is our IoT software platform for managing smart lighting systems and unlocking the value of the data they collect. Easy to install and configure, Interact supports a wide range of applications—from small offices to entire cities.

PHILIPS

Philips stands for quality and energy efficiency in lighting. It is our leading brand for innovative, off-the-shelf lighting products for professionals and consumers alike.

Get into pole position with high-performance, energy-efficient LED



Signify is Official Lighting Partner
of Mercedes-AMG Petronas F1 Team

Official Lighting Partner

 **Signify**



AMG
PETRONAS
FORMULA ONE TEAM

@signify

the meaning of light