



Lumec RoadScope LED Architectural Roadway luminaires feature high performance optical technology that provides a high efficient lighting solution. Connectable ready, the RoadScope offers multiple lumen packages and a complete array of optical distributions ensuring the right fit for any type of application. This family also includes Service Tag, which enables data delivery and information sharing, as well as providing assistance throughout the life of the product.

Project: \_\_\_\_\_  
 Location: \_\_\_\_\_  
 Cat.No: \_\_\_\_\_  
 Type: \_\_\_\_\_  
 Qty: \_\_\_\_\_  
 Notes: \_\_\_\_\_

### Ordering guide

example: S-RSCF-135W60LED-740-G1-2F-UNV-DMG-HSS-PH8-TLRD7-GY3

| Series                                | LED module                 | CCT/CRI                      | Gen.<br><b>G1</b> | Distribution                   | Voltage   | Options  |   | Finish   |
|---------------------------------------|----------------------------|------------------------------|-------------------|--------------------------------|---|--|---|--|
|                                       |                            |                              |                   |                                |   | Controls <sup>12</sup>   | Options   |  |
| S-RSCF<br>RoadScope<br>with flat roof | 35W20LED <sup>1</sup>      | 740 4000K/70CRI              | G1 Gen 1          | <b>Without Flat Lens</b>       | UNV<br>120-277V<br>HVV<br>347-480V<br>HVX <sup>11</sup><br>277-480V | D4I <sup>13</sup> Zhaga-D4i certified<br>DALI Digitally addressable lighting interface<br>DMG <sup>14</sup> 0-10V<br>SRD Sensor ready driver | API Factory installed NEMA label, ANSI C136.15-2020 compliant<br>CSS <sup>15,16</sup> Cul-de-Sac Shield<br>FSS <sup>15,16</sup> Front Side Shield<br>HSS <sup>15,16</sup> House Side Shield<br>LSS <sup>15,16</sup> Left Side Shield<br>RSS <sup>15,16</sup> Right Side Shield<br>FAWS <sup>3,15</sup> Field adjustable wattage switch<br>OMS <sup>17</sup> Outdoor Multi-Sensor<br>PH8 <sup>2,18</sup> Twist-lock photoelectric cell, UNV (120-277VAC)<br>PH8/347 <sup>18,19</sup> Twist-lock photoelectric cell (347VAC)<br>PH8/480 <sup>18,19</sup> Twist-lock photoelectric cell (480VAC)<br>PHXL <sup>2,18</sup> UNV (120-277VAC)<br>PH9 <sup>18</sup> Shorting cap<br>TLRD7 <sup>20</sup> Tool less receptacle for twist-lock photocell or shorting cap, 7-pin (standard) | BK Black<br>BR Bronze<br>GY3 Gray<br>WH White<br><b>Textured Finishes</b><br>BKTX Black<br>BRTX Bronze<br>GY3TX Gray<br>WHTX White |
|                                       | 60W20LED <sup>1</sup>      | 730 3000K/70CRI              |                   | 1 <sup>10</sup> Type I         |   |  |   |  |
|                                       | 15W40LED <sup>2,3,4</sup>  | 727 <sup>9</sup> 2700K/70CRI |                   | 2 Type II                      |   |  |   |  |
|                                       | 20W40LED <sup>2,3,4</sup>  | 840 <sup>9</sup> 4000K/80CRI |                   | 2B Type II enhanced backlight  |   |  |   |  |
|                                       | 30W40LED <sup>2,4</sup>    | 830 <sup>9</sup> 3000K/80CRI |                   | 3 Type III                     |   |  |   |  |
|                                       | 35W40LED <sup>2,4</sup>    | 827 <sup>9</sup> 2700K/80CRI |                   | 3W Type III wide               |   |  |   |  |
|                                       | 45W40LED <sup>4</sup>      |                              |                   | 4 Type IV                      |   |  |   |  |
|                                       | 65W40LED <sup>4</sup>      |                              |                   | 5 Type V                       |   |  |   |  |
|                                       | 80W40LED <sup>4</sup>      |                              |                   | <b>With Flat Lens</b>          |   |  |   |  |
|                                       | 90W40LED <sup>4</sup>      |                              |                   | 1F <sup>10</sup> Type I        |   |  |   |  |
|                                       | 105W40LED <sup>4</sup>     |                              |                   | 2F Type II                     |   |  |   |  |
|                                       | 120W40LED <sup>5</sup>     |                              |                   | 2BF Type II enhanced backlight |   |  |   |  |
|                                       | 140W40LED <sup>4,6,7</sup> |                              |                   | 3F Type III                    |   |  |   |  |
|                                       | 135W60LED <sup>5</sup>     |                              |                   | 3WF Type III wide              |   |  |   |  |
|                                       | 160W60LED <sup>5</sup>     |                              |                   | 4F Type IV                     |   |  |   |  |
|                                       | 180W60LED <sup>5</sup>     |                              |                   | 5F Type V                      |   |  |   |  |
|                                       | 210W70LED <sup>4,6,7</sup> |                              |                   |                                |   |  |   |  |
| 225W70LED <sup>4,6,7,8</sup>          |                            |                              |                   |                                |   |  |   |  |

- Only available with Type 1 Distribution
- Not available with HVU Voltage option.
- Only available with DMG Driver option.
- Not available with Type 1 Distribution.
- Not available with Shielding and Flat Lens together.
- Shielding cannot be used.
- Not available with Flat lens
- Not available with Dome Roof
- Extended lead-time may apply. Consult factory.
- Only available with selected wattages, see notes 4 and 5.
- Not available with DMG Driver option. If used, photoelectric cell selection must be compatible with fixture install voltage.
- Select either D4I, DALI or DMG or SRD mandatory option.
- TLRSR must be selected with D4I Driver option.
- Please note this integrated feature come standard with RoadScope
- Refer to Accessories section to confirm compatibility of shields with optical distribution.
- One shield provided per LED light engine.
- TLRSR Option and D4I Driver option must be selected with OMS.
- TLRD7 must be selected for this option.
- Not available with UNV Voltage option.
- Use of photoelectric cell or shorting cap is required to ensure proper illumination
- Only available with D4I or SRD Driver options.
- Failure to properly select the "BAC" suffix could result in you receiving product that is not BAA compliant product with no recourse for an RMA or refund. This BAC designation hereunder does not address (i) the applicability of, or availability of a waiver under, the Trade Agreements Act, or (ii) the "Buy America" domestic content requirements imposed on states, localities, and other non-federal entities as a condition of receiving funds administered by the Department of Transportation or other federal agencies.

# S-RSCF/S-RSCT RoadScape

## LED Architectural Roadway

**Accessories\*** Must be ordered as separate line items - quickly and easily installed in the field.  
Not available with flat glass option. Flat glass shield only available factory installed.

| Description                         | Ordering Code        | Shield vs Dist. Comp. |     |     |     |     | Ordering Code        | Shield vs Distribution Compatibility |     |     |     |     |    |
|-------------------------------------|----------------------|-----------------------|-----|-----|-----|-----|----------------------|--------------------------------------|-----|-----|-----|-----|----|
|                                     | 10 LED version**     | 1                     | R2M | R3M | 4   | 5   | 40 LED versions**    | 2                                    | 2B  | 3   | 3W  | 4   | 5  |
| Cul-de-sac shield                   | ACC-LG66V10LED-CSS   | No                    | Yes | Yes | No  | No  | ACC-LG66V40LED-CSS   | Yes                                  | Yes | Yes | Yes | No  | No |
| Front side shield                   | ACC-LG66V10LED-FSS   | No                    | Yes | Yes | No  | No  | ACC-LG66V40LED-FSS   | Yes                                  | Yes | Yes | Yes | No  | No |
| Front side shield (for Type 4 only) | -                    | No                    | -   | -   | -   | -   | ACC-LG66V40LED-FSS-4 | No                                   | No  | No  | No  | Yes | No |
| House side shield                   | ACC-LG66V10LED-HSS   | No                    | Yes | Yes | Yes | No  | ACC-LG66V40LED-HSS   | Yes                                  | Yes | Yes | Yes | No  | No |
| House side shield (for Type 4 only) | ACC-LG66V10LED-HSS-4 | No                    | No  | No  | No  | No  | ACC-LG66V40LED-HSS-4 | No                                   | No  | No  | No  | Yes | No |
| Left side shield                    | ACC-LG66V10LED-LSS   | No                    | Yes | Yes | No  | No  | ACC-LG66V40LED-LSS   | Yes                                  | Yes | Yes | Yes | No  | No |
| Right side shield                   | ACC-LG66V10LED-RSS   | No                    | Yes | Yes | N/A | N/A | ACC-LG66V40LED-RSS   | Yes                                  | Yes | Yes | Yes | No  | No |

\* Consult Signify to confirm whether specific accessories are BAA-compliant.

\*\* Refer to Wattage table to confirm light engine configuration. Example, if configuration is 2x10LED, 2 of the desired shields must be ordered per luminaire.

### Predicted Lumen Depreciation Data

Derived from LED manufacturer's data and engineering design estimates, based on IESNA LM-80 methodology. Actual experience may vary due to field application conditions. L70 is the predicted time when LED performance depreciates to 70% of initial lumen output. Calculated per IESNA TM21-21.

| Ambient Temperature | L70 per TM-21 | 50,000hrs | 75,000hrs | 100,000hrs |
|---------------------|---------------|-----------|-----------|------------|
| 25°C                | >102,000 hrs  | 83.6%     | 74.5%     | 66.5%      |



### Connected lighting

Interact City connector node provides the plug and play wireless communications technology to connect your street light to the Interact City lighting management system.

| Accessory Ordering Code | Description                                      |
|-------------------------|--|
| LLC                     | Interact City cellular technology connector node |

Contact the factory for additional support when connected lighting or additional services are desired.

### Wattage Values

| Ordering Code                 | Total LEDs | Light Engine Config. | Avg. System Watts (W) <sup>1</sup> | Wattage Label <sup>2</sup> |
|-------------------------------|------------|----------------------|------------------------------------|----------------------------|
| S-RSCx-35W20LED               | 20         | 2x10LED              | 35                                 | 30                         |
| S-RSCx-60W20LED               | 20         | 2x10LED              | 59                                 | 60                         |
| S-RSCx-15W40LED               | 40         | 1x40LED              | 14                                 | 10                         |
| S-RSCx-20W40LED               | 40         | 1x40LED              | 19                                 | 20                         |
| S-RSCx-30W40LED               | 40         | 1x40LED              | 27                                 | 30                         |
| S-RSCx-35W40LED               | 40         | 1x40LED              | 34                                 | 30                         |
| S-RSCx-45W40LED               | 40         | 1x40LED              | 44                                 | 40                         |
| S-RSCx-65W40LED               | 40         | 1x40LED              | 63                                 | 60                         |
| S-RSCx-80W40LED               | 40         | 1x40LED or 4x10LED4  | 79                                 | 80                         |
| S-RSCx-90W40LED               | 40         | 1x40LED              | 89                                 | 90                         |
| S-RSCx-105W40LED <sup>3</sup> | 40         | 1x40LED or 4x10LED4  | 103                                | 100                        |
| S-RSCx-120W40LED <sup>3</sup> | 40         | 1x40LED or 4x10LED   | 118                                | 120                        |
| S-RSCx-140W40LED <sup>3</sup> | 40         | 1x40LED              | 136                                | 140                        |
| S-RSCx-135W60LED <sup>3</sup> | 60         | 6x10LED              | 129                                | 130                        |
| S-RSCx-160W60LED <sup>3</sup> | 60         | 6x10LED              | 151                                | 150                        |
| S-RSCx-180W60LED <sup>3</sup> | 60         | 6x10LED              | 171                                | 170                        |
| S-RSCx-210W70LED <sup>3</sup> | 70         | 7x10LED              | 204                                | 200                        |
| S-RSCx-225W70LED <sup>3</sup> | 70         | 7x10LED              | 224                                | 220                        |

1. Typical values, rounded.
2. As per ANSI C136.15-2020. Consult factory for other labelling needs.
3. Rated for +40°C / +104°F (Type 1 distribution only).

### FAWS

| FAWS | 15W40LED<br>35W40LED              | 20W40LED<br>45W40LED              | 30W40LED                            |
|------|-----------------------------------|-----------------------------------|-------------------------------------|
|      | Typical System Wattage Multiplier | Typical System Wattage Multiplier | Typical Delivered Lumens Multiplier |
| 1    | 0.229                             | 0.229                             | 0.221                               |
| 2    | 0.398                             | 0.398                             | 0.394                               |
| 3    | 0.467                             | 0.467                             | 0.464                               |
| 4    | 0.528                             | 0.528                             | 0.528                               |
| 5    | 0.598                             | 0.598                             | 0.597                               |
| 6    | 0.643                             | 0.643                             | 0.643                               |
| 7    | 0.695                             | 0.695                             | 0.697                               |
| 8    | 0.729                             | 0.729                             | 0.731                               |
| 9    | 0.766                             | 0.766                             | 0.769                               |
| 10   | 1.000                             | 1.000                             | 1.000                               |

Note: Typical value accuracy +/- 5%

| FAWS | 140W40LED<br>210W70LED<br>225W70LED | 160W60LED with flat lens<br>180W60LED with flat lens |
|------|-------------------------------------|--|
|      | Typical System Wattage Multiplier   | Typical Delivered Lumens Multiplier                  |
| 1    | 0.134                               | 0.134  |
| 2    | 0.252                               | 0.266  |
| 3    | 0.317                               | 0.339  |
| 4    | 0.425                               | 0.451  |
| 5    | 0.488                               | 0.516  |
| 6    | 0.560                               | 0.590  |
| 7    | 0.634                               | 0.659  |
| 8    | 0.706                               | 0.729  |
| 9    | 0.767                               | 0.787  |
| 10   | 1.000                               | 1.000  |

Note: Typical value accuracy +/- 5%

| FAWS | 35W20LED<br>80W40LED<br>120W40LED<br>160W60LED without flat lens<br>180W60LED without flat lens | 60W20LED<br>90W40LED<br>140W40LED<br>135W60LED | 65W40LED<br>105W40LED               |
|------|---|--|-------------------------------------|
|      | Typical System Wattage Multiplier   | Typical System Wattage Multiplier              | Typical Delivered Lumens Multiplier |
| 1    | 0.273   | 0.273  | 0.286                               |
| 2    | 0.487   | 0.487  | 0.515                               |
| 3    | 0.574   | 0.574  | 0.605                               |
| 4    | 0.695   | 0.695  | 0.725                               |
| 5    | 0.741   | 0.741  | 0.771                               |
| 6    | 0.812   | 0.812  | 0.803                               |
| 7    | 0.878   | 0.878  | 0.834                               |
| 8    | 0.924   | 0.924  | 0.933                               |
| 9    | 0.980   | 0.980  | 0.982                               |
| 10   | 1.000   | 1.000  | 1.000                               |

Note: Typical value accuracy +/- 5%



# S-RSCF/S-RSCT RoadScape

## LED Architectural Roadway

With Flat Lens: LED Standard Performance Lumen Values - multiply values by 0.9 for 80CRI

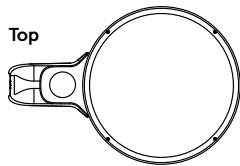
| Ordering Code        | Type 1F      |            |              | Type 2F      |            |              | Type 2BF     |            |              | Type 3F      |            |              | Type 3WF     |            |              | Type 4F      |            |              | Type 5F      |            |              |
|----------------------|--------------|------------|--------------|--------------|------------|--------------|--------------|------------|--------------|--------------|------------|--------------|--------------|------------|--------------|--------------|------------|--------------|--------------|------------|--------------|
|                      | Lumen Output | BUG Rating | Effic. (LPW) | Lumen Output | BUG Rating | Effic. (LPW) | Lumen Output | BUG Rating | Effic. (LPW) | Lumen Output | BUG Rating | Effic. (LPW) | Lumen Output | BUG Rating | Effic. (LPW) | Lumen Output | BUG Rating | Effic. (LPW) | Lumen Output | BUG Rating | Effic. (LPW) |
| <b>4000K / 70CRI</b> |              |            |              |              |            |              |              |            |              |              |            |              |              |            |              |              |            |              |              |            |              |
| 35W20LED             | 5436         | B2-U0-G2   | 156.2        | -            | -          | -            | -            | -          | -            | -            | -          | -            | -            | -          | -            | -            | -          | -            | -            | -          | -            |
| 60W20LED             | 8664         | B3-U0-G2   | 147.6        | -            | -          | -            | -            | -          | -            | -            | -          | -            | -            | -          | -            | -            | -          | -            | -            | -          | -            |
| 15W40LED             | -            | -          | -            | 2398         | B1-U0-G1   | 167.2        | 2552         | B1-U0-G1   | 178.0        | 2507         | B1-U0-G1   | 174.8        | 2432         | B1-U0-G1   | 169.6        | 2473         | B1-U0-G1   | 172.5        | 2291         | B2-U0-G1   | 159.8        |
| 20W40LED             | -            | -          | -            | 3185         | B1-U0-G1   | 166.5        | 3390         | B1-U0-G1   | 177.2        | 3329         | B1-U0-G1   | 174.0        | 3230         | B1-U0-G1   | 168.8        | 3285         | B1-U0-G1   | 171.7        | 3043         | B2-U0-G1   | 159.1        |
| 30W40LED             | -            | -          | -            | 4305         | B1-U0-G1   | 160.9        | 4583         | B1-U0-G1   | 171.3        | 4501         | B1-U0-G1   | 168.2        | 4367         | B1-U0-G1   | 163.2        | 4441         | B1-U0-G1   | 166.0        | 4114         | B3-U0-G1   | 153.7        |
| 35W40LED             | -            | -          | -            | 5440         | B2-U0-G1   | 159.5        | 5791         | B2-U0-G1   | 169.8        | 5687         | B2-U0-G1   | 166.7        | 5517         | B1-U0-G1   | 161.7        | 5611         | B1-U0-G1   | 164.5        | 5198         | B3-U0-G1   | 152.4        |
| 45W40LED             | -            | -          | -            | 6853         | B2-U0-G2   | 157.0        | 7295         | B2-U0-G2   | 167.1        | 7164         | B2-U0-G1   | 164.1        | 6950         | B2-U0-G2   | 159.2        | 7069         | B1-U0-G2   | 161.9        | 6548         | B3-U0-G1   | 150.0        |
| 65W40LED             | -            | -          | -            | 9239         | B2-U0-G2   | 146.2        | 9835         | B2-U0-G2   | 155.6        | 9659         | B2-U0-G2   | 152.8        | 9370         | B2-U0-G2   | 148.3        | 9531         | B2-U0-G2   | 150.8        | 8828         | B3-U0-G2   | 139.7        |
| 80W40LED             | 12520        | B3-U0-G3   | 158.5        | 11335        | B2-U0-G2   | 143.5        | 12067        | B2-U0-G2   | 152.7        | 11850        | B3-U0-G2   | 150.0        | 11496        | B2-U0-G2   | 145.5        | 11693        | B2-U0-G2   | 148.0        | 10832        | B4-U0-G2   | 137.1        |
| 90W40LED             | -            | -          | -            | 12727        | B3-U0-G3   | 143.0        | 13548        | B3-U0-G3   | 152.2        | 13305        | B3-U0-G2   | 149.5        | 12907        | B2-U0-G2   | 145.0        | 13129        | B2-U0-G2   | 147.5        | 12161        | B4-U0-G2   | 136.6        |
| 105W40LED            | 15701        | B3-U0-G3   | 155.5        | 14348        | B3-U0-G3   | 139.3        | 15275        | B3-U0-G3   | 148.3        | 15001        | B3-U0-G2   | 145.6        | 14552        | B3-U0-G3   | 141.3        | 14802        | B2-U0-G2   | 143.7        | 13711        | B4-U0-G2   | 133.1        |
| 120W40LED            | 17475        | B3-U0-G3   | 152.0        | 15976        | B3-U0-G3   | 135.4        | 17008        | B3-U0-G3   | 144.1        | 16702        | B3-U0-G3   | 141.5        | 16203        | B3-U0-G3   | 137.3        | 16481        | B2-U0-G2   | 139.7        | 15266        | B4-U0-G2   | 129.4        |
| 140W40LED            | -            | -          | -            | 18264        | B3-U0-G3   | 134.3        | 19443        | B3-U0-G3   | 143.0        | 19094        | B3-U0-G3   | 140.4        | 18523        | B3-U0-G3   | 136.2        | 18841        | B3-U0-G3   | 138.5        | 17452        | B4-U0-G2   | 128.3        |
| 135W60LED            | 20253        | B4-U0-G3   | 157.0        | 19311        | B3-U0-G3   | 149.7        | -            | -          | -            | 19569        | B3-U0-G3   | 151.7        | -            | -          | -            | 19099        | B3-U0-G3   | 148.1        | 18123        | B4-U0-G2   | 140.5        |
| 160W60LED            | 22967        | B4-U0-G4   | 152.1        | 21900        | B3-U0-G3   | 145.0        | -            | -          | -            | 22192        | B3-U0-G3   | 147.0        | -            | -          | -            | 21658        | B3-U0-G3   | 143.4        | 20552        | B5-U0-G3   | 136.1        |
| 180W60LED            | 25260        | B4-U0-G4   | 147.7        | 24086        | B3-U0-G3   | 140.9        | -            | -          | -            | 24407        | B3-U0-G3   | 142.7        | -            | -          | -            | 23820        | B3-U0-G3   | 139.3        | 22604        | B5-U0-G3   | 132.2        |
| <b>3000K / 70CRI</b> |              |            |              |              |            |              |              |            |              |              |            |              |              |            |              |              |            |              |              |            |              |
| 35W20LED             | 5219         | B2-U0-G2   | 150.0        | -            | -          | -            | -            | -          | -            | -            | -          | -            | -            | -          | -            | -            | -          | -            | -            | -          | -            |
| 60W20LED             | 8318         | B3-U0-G2   | 141.7        | -            | -          | -            | -            | -          | -            | -            | -          | -            | -            | -          | -            | -            | -          | -            | -            | -          | -            |
| 15W40LED             | -            | -          | -            | 2302         | B1-U0-G1   | 160.5        | 2450         | B1-U0-G1   | 170.9        | 2406         | B1-U0-G1   | 167.8        | 2334         | B1-U0-G1   | 162.8        | 2374         | B1-U0-G1   | 165.6        | 2199         | B2-U0-G1   | 153.4        |
| 20W40LED             | -            | -          | -            | 3057         | B1-U0-G1   | 159.8        | 3255         | B1-U0-G1   | 170.1        | 3196         | B1-U0-G1   | 167.1        | 3101         | B1-U0-G1   | 162.1        | 3154         | B1-U0-G1   | 164.9        | 2921         | B2-U0-G1   | 152.7        |
| 30W40LED             | -            | -          | -            | 4133         | B1-U0-G1   | 154.5        | 4400         | B1-U0-G1   | 164.4        | 4321         | B1-U0-G1   | 161.5        | 4192         | B1-U0-G1   | 156.6        | 4264         | B1-U0-G1   | 159.3        | 3950         | B2-U0-G1   | 147.6        |
| 35W40LED             | -            | -          | -            | 5222         | B1-U0-G1   | 153.1        | 5559         | B2-U0-G1   | 163.0        | 5459         | B2-U0-G1   | 160.0        | 5296         | B1-U0-G1   | 155.3        | 5387         | B1-U0-G1   | 157.9        | 4990         | B3-U0-G1   | 146.3        |
| 45W40LED             | -            | -          | -            | 6579         | B2-U0-G2   | 150.7        | 7004         | B2-U0-G2   | 160.4        | 6878         | B2-U0-G1   | 157.5        | 6672         | B2-U0-G2   | 152.8        | 6787         | B1-U0-G2   | 155.4        | 6287         | B3-U0-G1   | 144.0        |
| 65W40LED             | -            | -          | -            | 8869         | B2-U0-G2   | 140.3        | 9442         | B2-U0-G2   | 149.4        | 9273         | B2-U0-G2   | 146.7        | 8995         | B2-U0-G2   | 142.3        | 9150         | B2-U0-G2   | 144.8        | 8475         | B3-U0-G2   | 134.1        |
| 80W40LED             | 12019        | B3-U0-G3   | 152.1        | 10882        | B2-U0-G2   | 137.7        | 11584        | B3-U0-G3   | 146.6        | 11376        | B3-U0-G2   | 144.0        | 11036        | B2-U0-G2   | 139.7        | 11226        | B2-U0-G2   | 142.1        | 10398        | B4-U0-G2   | 131.6        |
| 90W40LED             | -            | -          | -            | 12217        | B3-U0-G2   | 137.3        | 13006        | B3-U0-G3   | 146.1        | 12773        | B3-U0-G2   | 143.5        | 12391        | B2-U0-G2   | 139.2        | 12604        | B2-U0-G2   | 141.6        | 11675        | B4-U0-G2   | 131.2        |
| 105W40LED            | 15073        | B3-U0-G3   | 149.2        | 13775        | B3-U0-G3   | 133.7        | 14664        | B3-U0-G3   | 142.4        | 14401        | B3-U0-G2   | 139.8        | 13970        | B3-U0-G3   | 135.6        | 14210        | B2-U0-G2   | 138.0        | 13162        | B4-U0-G2   | 127.8        |
| 120W40LED            | 16776        | B3-U0-G3   | 145.9        | 15337        | B3-U0-G3   | 130.0        | 16327        | B3-U0-G3   | 138.4        | 16034        | B3-U0-G3   | 135.9        | 15555        | B3-U0-G3   | 131.8        | 15822        | B2-U0-G2   | 134.1        | 14656        | B4-U0-G2   | 124.2        |
| 140W40LED            | -            | -          | -            | 17533        | B3-U0-G3   | 128.9        | 18665        | B3-U0-G3   | 137.2        | 18330        | B3-U0-G3   | 134.8        | 17782        | B3-U0-G3   | 130.8        | 18087        | B3-U0-G3   | 133.0        | 16754        | B4-U0-G2   | 123.2        |
| 135W60LED            | 19443        | B4-U0-G3   | 150.7        | 18539        | B3-U0-G3   | 143.7        | -            | -          | -            | 18786        | B3-U0-G3   | 145.6        | -            | -          | -            | 18335        | B3-U0-G3   | 142.1        | 17398        | B4-U0-G2   | 134.9        |
| 160W60LED            | 22049        | B4-U0-G3   | 146.0        | 21024        | B3-U0-G3   | 139.2        | -            | -          | -            | 21304        | B3-U0-G3   | 141.1        | -            | -          | -            | 20792        | B3-U0-G3   | 137.7        | 19730        | B4-U0-G2   | 130.7        |
| 180W60LED            | 24249        | B4-U0-G4   | 141.8        | 23122        | B3-U0-G3   | 135.2        | -            | -          | -            | 23431        | B3-U0-G3   | 137.0        | -            | -          | -            | 22868        | B3-U0-G3   | 133.7        | 21700        | B5-U0-G3   | 126.9        |
| <b>2700K / 70CRI</b> |              |            |              |              |            |              |              |            |              |              |            |              |              |            |              |              |            |              |              |            |              |
| 35W20LED             | 4784         | B2-U0-G2   | 137.5        | -            | -          | -            | -            | -          | -            | -            | -          | -            | -            | -          | -            | -            | -          | -            | -            | -          | -            |
| 60W20LED             | 7624         | B2-U0-G2   | 129.9        | -            | -          | -            | -            | -          | -            | -            | -          | -            | -            | -          | -            | -            | -          | -            | -            | -          | -            |
| 15W40LED             | -            | -          | -            | 2110         | B1-U0-G1   | 147.1        | 2246         | B1-U0-G1   | 156.6        | 2206         | B1-U0-G1   | 153.8        | 2140         | B1-U0-G1   | 149.2        | 2176         | B1-U0-G1   | 151.8        | 2016         | B1-U0-G1   | 140.6        |
| 20W40LED             | -            | -          | -            | 2802         | B1-U0-G1   | 146.5        | 2983         | B1-U0-G1   | 155.9        | 2930         | B1-U0-G1   | 153.2        | 2842         | B1-U0-G1   | 148.6        | 2891         | B1-U0-G1   | 151.1        | 2678         | B2-U0-G1   | 140.0        |
| 30W40LED             | -            | -          | -            | 3789         | B1-U0-G1   | 141.6        | 4033         | B1-U0-G1   | 150.7        | 3961         | B1-U0-G1   | 148.0        | 3843         | B1-U0-G1   | 143.6        | 3908         | B1-U0-G1   | 146.1        | 3620         | B2-U0-G1   | 135.3        |
| 35W40LED             | -            | -          | -            | 4787         | B1-U0-G1   | 140.3        | 5096         | B1-U0-G1   | 149.4        | 5004         | B1-U0-G1   | 146.7        | 4855         | B1-U0-G1   | 142.3        | 4938         | B1-U0-G1   | 144.8        | 4574         | B3-U0-G1   | 134.1        |
| 45W40LED             | -            | -          | -            | 6031         | B2-U0-G1   | 138.1        | 6420         | B2-U0-G2   | 147.0        | 6305         | B2-U0-G1   | 144.4        | 6116         | B1-U0-G1   | 140.1        | 6221         | B1-U0-G1   | 142.5        | 5763         | B3-U0-G1   | 132.0        |
| 65W40LED             | -            | -          | -            | 8130         | B2-U0-G2   | 128.6        | 8655         | B2-U0-G2   | 136.9        | 8500         | B2-U0-G2   | 134.5        | 8246         | B2-U0-G2   | 130.5        | 8387         | B2-U0-G2   | 132.7        | 7769         | B3-U0-G2   | 122.9        |
| 80W40LED             | 11018        | B3-U0-G3   | 139.5        | 9975         | B2-U0-G2   | 126.3        | 10619        | B2-U0-G2   | 134.4        | 10428        | B2-U0-G2   | 132.0        | 10117        | B2-U0-G2   | 128.1        | 10290        | B2-U0-G2   | 130.3        | 9532         | B3-U0-G2   | 120.7        |
| 90W40LED             | -            | -          | -            | 11199        | B2-U0-G2   | 125.8        | 11922        | B3-U0-G3   | 134.0        | 11708        | B3-U0-G2   | 131.6        | 11358        | B2-U0-G2   | 127.6        | 11553        | B2-U0-G2   | 129.8        | 10702        | B4-U0-G2   | 120.2        |
| 105W40LED            | 13817        | B3-U0-G3   | 136.8        | 12627        | B3-U0-G3   | 122.6        | 13442        | B3-U0-G3   | 130.5        | 13201        | B3-U0-G2   | 128.2        | 12806        | B2-U0-G2   | 124.3        | 13026        | B2-U0-G2   | 126.5        | 12066        | B4-U0-G2   | 117.1        |
| 120W40LED            | 15378        | B3-U0-G3   | 133.7        | 14059        | B3-U0-G3   | 119.1        | 14967        | B3-U0-G3   | 126.8        | 14698        | B3-U0-G2   | 124.6        | 14259        | B3-U0-G3   | 120.8        | 14503        | B2-U0-G2   | 122.9        | 13434        | B4-U0-G2   | 113.9        |
| 140W40LED            | -            | -          | -            | 16072        | B3-U0-G3   | 118.2        | 17110        | B3-U0-G3   | 125.8        | 16803        | B3-U0-G3   | 123.5        | 16300        | B3-U0-G3   | 119.9        | 16580        | B3-U0-G2   | 121.9        | 15358        | B4-U0-G2   | 112.9        |
| 135W60LED            | 17822        | B3-U0-G3   | 138.2        | 16994        | B3-U0-G3   | 131.7        | -            | -          | -            | 17221        | B3-U0-G3   | 133.5        | -            | -          | -            | 16807        | B2-U0-G2   | 130.3        | 15948        | B4-U0-G2   | 123.6        |
| 160W60LED            | 20211        | B4-U0-G3   | 133.8        | 19272        | B3-U0-G3   | 127.6        | -            | -          | -            | 19529        | B3-U0-G3   | 129.3        | -            | -          | -            | 19059        | B3-U0-G3   | 126.2        | 18086        | B4-U0-G2   | 119.8        |
| 180W60LED            | 22229        | B4-U0-G3   | 130.0        | 21195        | B3-U0-G3   | 123.9        | -            | -          | -            | 21478        | B3-U0-G3   | 125.6        | -            | -          | -            | 20962        | B3-U0-G3   | 122.6        | 19891        | B4-U0-G2   | 116.3        |

Actual performance may vary due to installation variables including optics, mounting/ceiling height, dirt depreciation, light loss factor, etc.; highly recommended to confirm performance with a layout - contact Applications at signify.com/outdoorluminaires. Consult DLC QPL to confirm your specific fixture selection is DLC approved. Note: Some data may be scaled based on tests of similar but not identical luminaires.

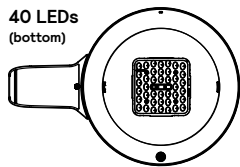
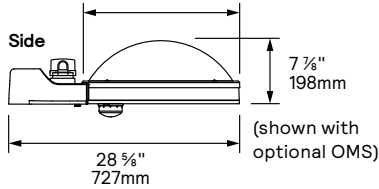
# S-RSCF/S-RSCT RoadScape

## LED Architectural Roadway

### Dimensions

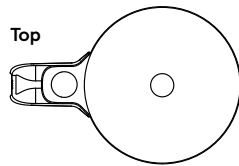


19 1/2"  
495mm

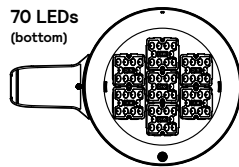
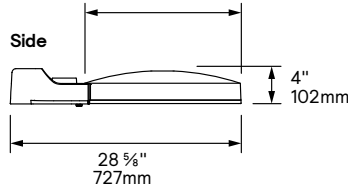


#### Dome roof

**Weight:** 30 lbs  
**EPA:** 0.91 sq. feet

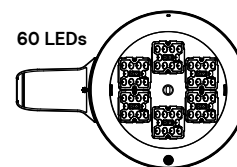
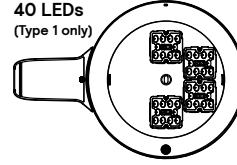
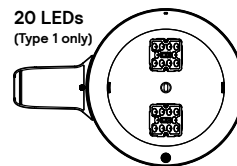


19 1/2"  
495mm

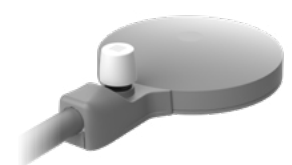


#### Flat roof

**Weight:** 27 lbs  
**EPA:** 0.46 sq. feet



### Images



(shown with optional OMS)

### Specifications

#### Housing

In a round shape, this housing is made of injection die cast A360.1 aluminium alloy 0.1 (2.5mm) minimum thickness mechanically assembled to the adaptor. Offers a tool free access to electrical components, rated IP66.

#### Adaptor

Made of cast 356 aluminium, fits on a 1.66" (42mm) O.D. (1.25" NPS), 1.9" (48mm) O.D. (1.5" NPS) or 2 3/8" (60mm) O.D. (2" NPS) by 4 1/4" (108mm) minimum long tenon. Comes with a zinc plated clamp fixed by 2 zinc plated hexagonal bolts 3/8 16 UNC for ease of installation. Provides an easy step adjustment of +/- 5° tilt in 2.5° increments. Includes integral bubble level standard (always included). A secured removable door to prevent accidental dropping provides tool-free access to the terminal block. Rated IP54 per ANSI C136.37. Complete with a bird guard protecting against birds and similar intruders and an ANSI label as per C136.15 2020 to identify wattage and source (both included in box).

#### Light Engine

##### Composed of 4 main components: LED Module / Optical System / Heat Sink / Driver.

Electrical components are RoHS compliant, IP66 sealed light engine equipped LEDs tested by ISO 17025-2005 accredited lab in accordance with IESNA LM-80 guidelines in compliance with EPA ENERGY STAR, extrapolations in accordance with IESNA TM-21. Metal core board ensures greater heat transfer and longer lifespan.

**Heat Sink:** Made of cast aluminum optimizing the LEDs efficiency and life. Product does not use any cooling device with moving parts (only passive cooling). Entire luminaire is rated for operation in ambient temperature of -40°C / -40°F up to +40°C / +104°F up to +50°C / +122°F unless otherwise specified, refer to LED Wattages Values Table.

**LED Module:** Composed of high-performance white LEDs. Color temperature as per ANSI/ NEMA bin 2700 Kelvin nominal (2725 ±145K), 3000 Kelvin nominal (3045K +/- 175K) or 4000 Kelvin nominal (3985K +/- 275K), CRI 70 Min. 75 Typical. Other CCT/ CRI also available, consult factory.

**Optical System:** Composed of high-performance UV stabilized optical grade polymer refractor lenses to achieve desired distribution optimized to get maximum spacing, target lumens and a superior lighting uniformity. System is rated IP66. Performance shall be tested per LM 63, LM 79 and TM 15 (IESNA) certifying its photometric performance. Luminaire designed with 0% uplight and U0 per IESNA TM 15 and complies with Dark Sky requirements.

**Driver:** High power factor of 90% min. electronic driver, operating range 50/60 Hz. Auto adjusting voltage input, rated for both application line to line or line to neutral, Class I or 2, THD of 20% max. The current supplying the LEDs will be reduced by the driver if the driver experiences internal overheating as a protection to the LEDs and the electrical components. Output is protected from short circuits, voltage overload and current overload. Automatic recovery after correction.

#### Integrated Features

**DMG:** Dimmable driver 0-10V.

**Surge Protection:** Fail-On Surge protection device tested in accordance with ANSI/IEEE C62.45 per ANSI/IEEE C62.41.2 Scenario I Category C High Exposure 10kV/10kA waveforms for Line-Ground, Line-Neutral and Neutral-Ground, and in accordance with DOE MSSLC Model Specification for LED Roadway Luminaires Appendix D Electrical Immunity High test level 10kV/10kA.

**Note:** These integrated features always come with RoadFocus luminaire.

#### Driver and Luminaire Options

**UNV :** Universal voltage range (120-277VAC)

**HVU:** High voltage range (347-480VAC)

**HVX:** Extended voltage range (277-480VAC). Provides additional protection for abnormal power conditions like neutral drop on 277V installations or others.

**D41\*:** Zhaga-D4i certified fixture

**DALI\*:** Pre-set driver compatible with the DALI control system.

**SRD\*:** Sensor Ready Driver including SR communication (used for dimming and other functionalities), 24V auxiliary supply and a logical signal input (LSI) connected to the top NEMA twist lock receptacle and bottom TLRSR receptacle, if this option included/chosen. This configuration is compatible with Interact City controllers.

**OMS:** Outdoor Multi Sensor

\* These driver options ship with DALI bus power turned on and luminaire information loaded in Memory banks 1 as per ANSI C137.4 (2021). Consult factory for any other driver programming requirement.



# S-RSCF/S-RSCT RoadScape

## LED Architectural Roadway

### Specifications (continued)

#### Driver and Luminaire Options (continued)

**SP2:** Fail-On 20kV / 10kA surge protection device that provides extra protection beyond the SP1 10kV/10kA level.

**SP1X:** Fail-Off Surge protection device tested in accordance with ANSI/IEEE C62.45 per ANSI/ IEEE C62.41.2 Scenario I Category C High Exposure 10kV/5kA waveforms for Line-Ground, Line-Neutral and Neutral-Ground, and in accordance with DOE MSSLC Model Specification for LED Roadway Luminaires Appendix D Electrical Immunity High test level 10kV/5kA.

**SP2X:** Fail-Off 20kV / 10kA surge protection device that provides extra protection beyond the SP1X 10kV/5kA level.

**FAWS:** Field Adjustable Wattage Selector, pre-set to the highest position, can be easily switched in the field to the required position. This reduces total luminaire wattage consumption and reduces the light level – see the FAWS multiplier chart for more details.

**Note:** It is not recommended to use FAWS with other dimming or controls; if you do, set the switch to position 10 (maximum output) to enable the other dimming or controls. Switching FAWS to any position other than 10 will disable other dimming or controls.

**TLRD7:** Tool less orientable receptacle with 7 pins enabling dimming and additional functionality (to be determined), can be used with a twist lock Interact City node or photoelectric cell or a shorting cap. Use of photoelectric cell or shorting cap is required to ensure proper illumination. Note: Additional hardware will be required to utilize the additional 2 pins on this receptacle.

**TLRSR:** SR Sensor connector, installed in fixture door. Shipped with protective cover.

**PH8:** Twist-lock photoelectric cell, UNV (120-277VAC).

**PHXL:** Twist-lock photoelectric cell, extended life, UNV (120-277VAC).

**PH9:** Shorting cap (use of photoelectric cell or shorting cap is required to ensure proper illumination).

**API:** Factory Installed NEMA label, ANSI C136.15-2020 compliant. Consult factory for other labeling needs.

#### Connected Lighting

Interact City connector node provides the plug and play wireless communications technology to connect your street light to the Interact City lighting management system. With Interact you can remotely manage, monitor and control all city lighting, from

roads and streets, to parks and plazas, and bridges from one single system. Connected lighting enables capabilities including, accurate on/off switching, dimming control, fault reporting and integration with other systems to enable condition-based lighting. Interact provides you with a robust and scalable infrastructure to further reduce energy consumption, improve operations, and turn lighting into a connected network for your smart city journey.

For more details visit: [interact-lighting.com/en-us/what-is-possible/interact-city](https://interact-lighting.com/en-us/what-is-possible/interact-city)

#### Factory Installed Shield Options (one per Light Engine)

**CSS:** Cul-de-Sac Shield. Shields light output on the left and right side of fixture.

**FSS:** Front Side Shield. Shields light output on the front side of fixture.

**HSS:** House Side Shield. Shields light output to the back side of fixture.

**LSS:** Left Side Shield. Shields light output on the left side of fixture.

**RSS:** Right Side Shield. Shields light output on the right side of fixture.

#### Luminaire Useful Life

Refer to IES files for energy consumption and delivered lumens for each option. Based on ISTMT in situ thermal testing in accordance with UL1598 and UL8750, System Reliability Tool, Advance data and LED manufacturer LM-80/TM-21 data, expected to reach 100,000+ hours with >L70 lumen maintenance @ 25°C. Luminaire Useful Life accounts for LED lumen maintenance AND all of these additional factors including: LED life, driver life, PCB substrate, solder joints, on/off cycles, burning hours and corrosion. Wiring the connection of the luminaire is done using a terminal block connector 600V, 85A for use with #2 14 AWG. wires from the primary circuit, located inside the housing. Due to the inrush current that occurs with electronic drivers, recommend using a 10Amp time-delay fuse to avoid unwanted fuse blowing (false tripping) that can occur with normal or fast acting fuses.

#### Hardware

All exposed screws shall be complete with Ceramic primer seal to reduce seizing of the parts, also offers a high resistance to corrosion. All seals and sealing devices are made and/or lined with EPDM and/or silicone and/or rubber.

#### Finish

Color in accordance with the AAMA 2603 standard. Application of polyester powder coat paint (4 mils/100 microns) with  $\pm$  1 mils/24 microns of tolerance. The Thermosetting resins provides a discoloration resistant finish in accordance with the ASTM D2244 standard, as well as luster retention in keeping with the ASTM D523 standard and humidity proof in accordance with the ASTM D2247 standard. The surface treatment achieves a minimum of 5000 hours for salt spray resistant finish in accordance with testing performed and per ASTM B117 standard.

#### LED products manufacturing standard

The electronic components sensitive to electrostatic discharge (ESD) such as light emitting diodes (LEDs) are assembled in compliance with IEC61340-5-1 and ANSI/ESD S20.20 standards so as to eliminate ESD events that could decrease the useful life of the product.

#### Vibration Resistance

The S-RSC meets the ANSI C136.31-2018, American National Standard for Roadway Luminaire Vibration specs for Bridge/overpass applications.

#### Certifications and Compliance

cULus Listed for Canada and USA. Luminaire meets DOE and MSSLC Model Specification for LED Roadway Luminaires. Most versions of RoadFocus LED luminaires are DesignLights Consortium qualified, consult DLC QPL to confirm your specific fixture selection is approved. CCTs 3000K and warmer are IDA Dark Sky Approved. Luminaire complies with or exceeds the following ANSI C136 standards: .2, .3, .10, .14, .15, .22, .25, .31, .37, .41.

#### Service Tag

Each individual luminaire is uniquely identifiable, thanks to the Service tag application. With a simple scan of a QR code, placed on the inside of the mast door, you gain instant access to the luminaire configuration, making installation and maintenance operations faster and easier, no matter what stage of the luminaire's lifetime. Just download the APP and register your product.

For more details visit: [signify.com/servicetag](https://signify.com/servicetag)

#### Limited Warranty

10-year limited warranty. See [signify.com/warranties](https://signify.com/warranties) for details and restrictions.

#### Brackets/Arms

For brackets / arms available with this luminaire, see Lumec 3D for details.

\* These driver options ship with DALI bus power turned on and luminaire information loaded in Memory banks 1 as per ANSI C137.4 (2021). Consult factory for any other driver programming requirement.



© 2023 Signify Holding. All rights reserved. The information provided herein is subject to change, without notice. Signify does not give any representation or warranty as to the accuracy or completeness of the information included herein and shall not be liable for any action in reliance thereon. The information presented in this document is not intended as any commercial offer and does not form part of any quotation or contract, unless otherwise agreed by Signify.

Signify North America Corporation  
400 Crossing Blvd, Suite 600  
Bridgewater, NJ 08807  
Telephone 800-555-0050

Signify Canada Ltd.  
281 Hillmount Road,  
Markham, ON, Canada L6C 2S3  
Telephone 800-668-9008

All trademarks are owned by Signify Holding or their respective owners.