



PHILIPS

Retrofit trunking

Retrofit trunking solutions

The easy way to switch from conventional to LED lighting

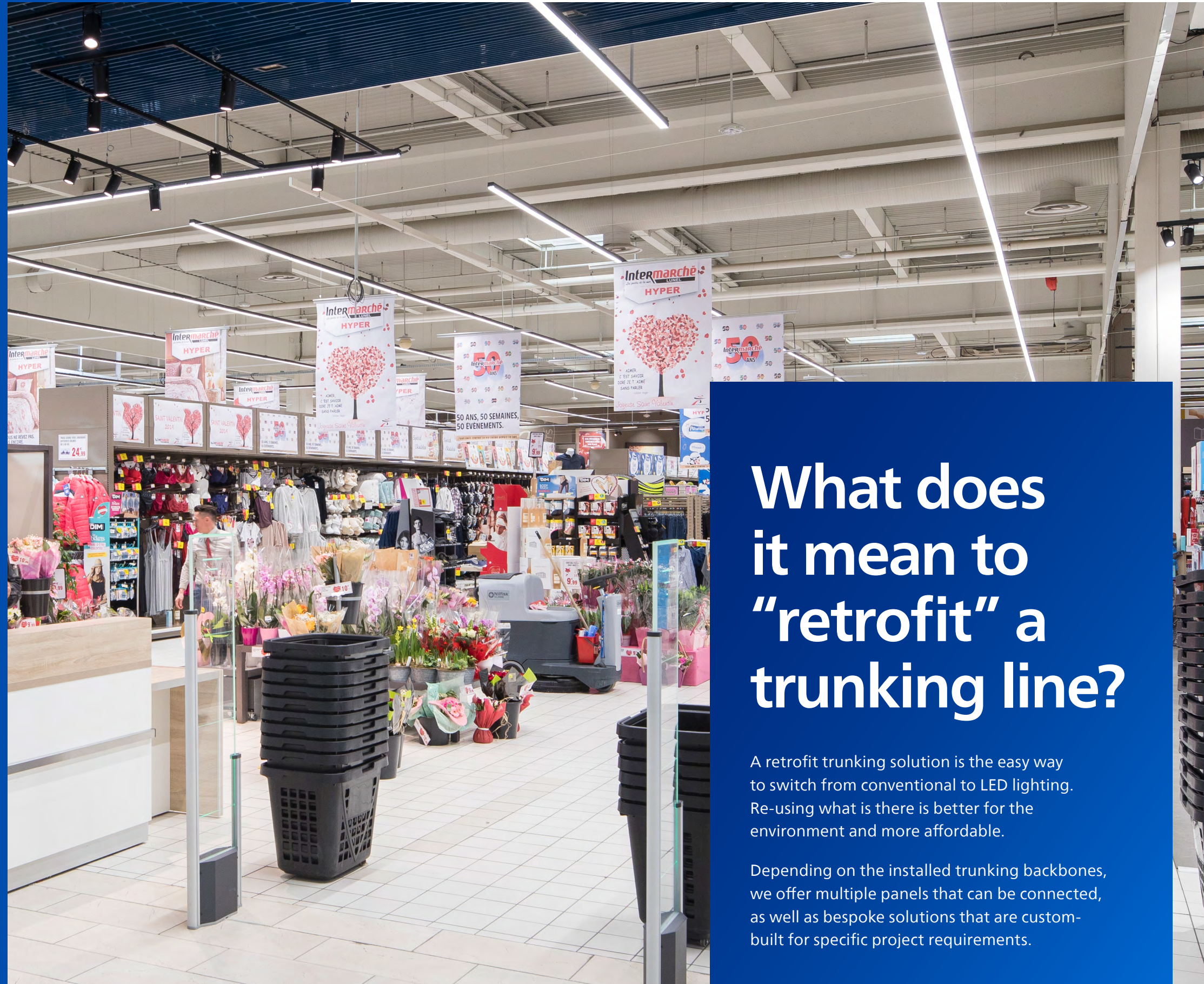
Life after fluorescent lighting

As of September 2023, fluorescent tube lights have been banned in the EU and UK, pushing businesses to seek simple and cost-effective solutions to switch out their existing lighting.

But replacing an entire lighting infrastructure can be expensive and time consuming. In addition, it remains a high priority to be more sustainable and reduce energy usage, while providing good quality lighting for a comfortable working environment and a welcoming ambience for customers.

Retrofit trunking solutions can help businesses meet all of these concerns. Businesses can re-use existing trunking backbones and simply upgrade their lighting to meet the latest technological standards for efficacy.

We have a long, successful history of providing top-quality lighting products under the Philips brand, and a proven track record of designing, planning, and executing renovation roll-out programs with customers.



What does it mean to “retrofit” a trunking line?

A retrofit trunking solution is the easy way to switch from conventional to LED lighting. Re-using what is there is better for the environment and more affordable.

Depending on the installed trunking backbones, we offer multiple panels that can be connected, as well as bespoke solutions that are custom-built for specific project requirements.

Why choose a Philips retrofit trunking solution?



We have flexible solutions that fit a big part of the existing fluorescent trunks



Save more than 55% energy compared to fluorescent installations



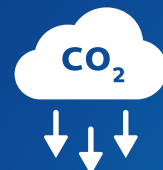
Long LED lifetimes for less re-lamping than with fluorescent



Brighten workplaces with high-quality, industry-compliant LED lighting



Lower a facility's W/m² load



Reduce carbon footprints by re-using the existing electrical infrastructure

Retrofit panels to work with existing trunking

We offer a range of retrofit panels, so that your customers can enjoy the benefits of LED lighting, whether their existing trunking is Maxos fluorescent, TTX400, or a non-Philips solution.

Maxos fluorescent



Maxos LED Industry (4MX850)

TTX400



Maxos LED Insert for TTX400 (4MX400)

Fits on non-Philips trunks



Maxos universal

Maxos LED Industry 4MX850 and Maxos LED Inserts 4MX400

Maxos LED panels have a functional design with six dedicated beam shapes and an upgradeable and modular architecture that combines with Philips controls and accent lighting. Featuring light output of up to 8,000 lumens per 1.5 m, good glare control, and high efficacy up to 169 lm/W, these inserts are also dimmable, allowing for even more energy savings.

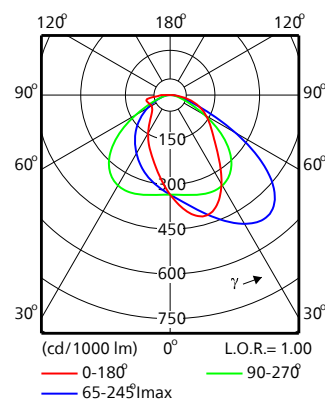
Separate light units can be retrofitted to existing Maxos or TTX400 trunking rails. The 4MX850 (Maxos LED Industry) light unit is compatible with Maxos TL trunks while the 4MX400 light unit is designed to convert a TTX400 fluorescent installation.



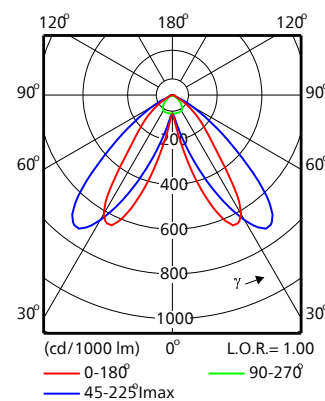
Maxos LED Industry 4MX850

Maxos LED Inserts 4MX400

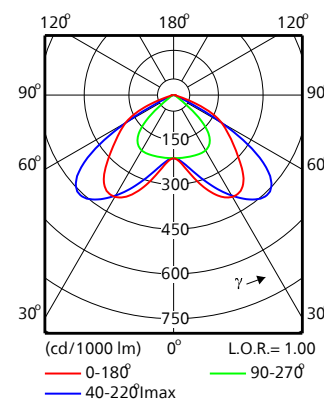
Beam shape diagrams



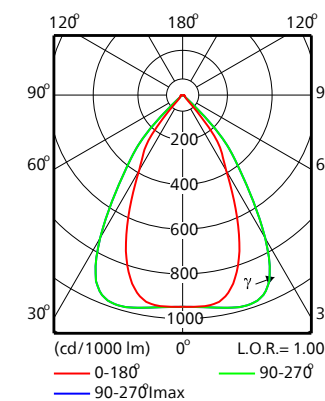
Asymmetric 20deg



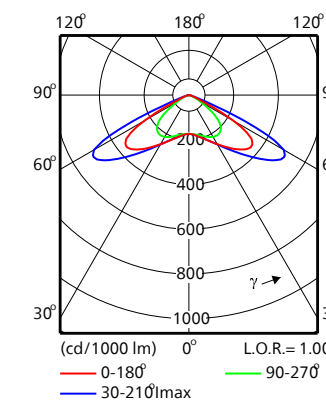
Double asymmetric 20deg



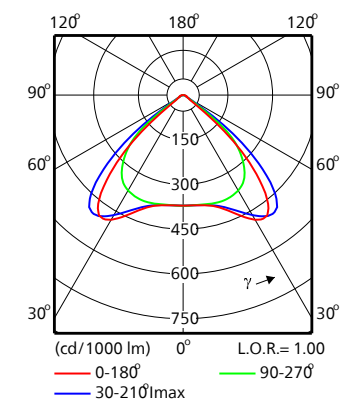
Double asymmetric 35deg



Narrow beam



Very wide beam



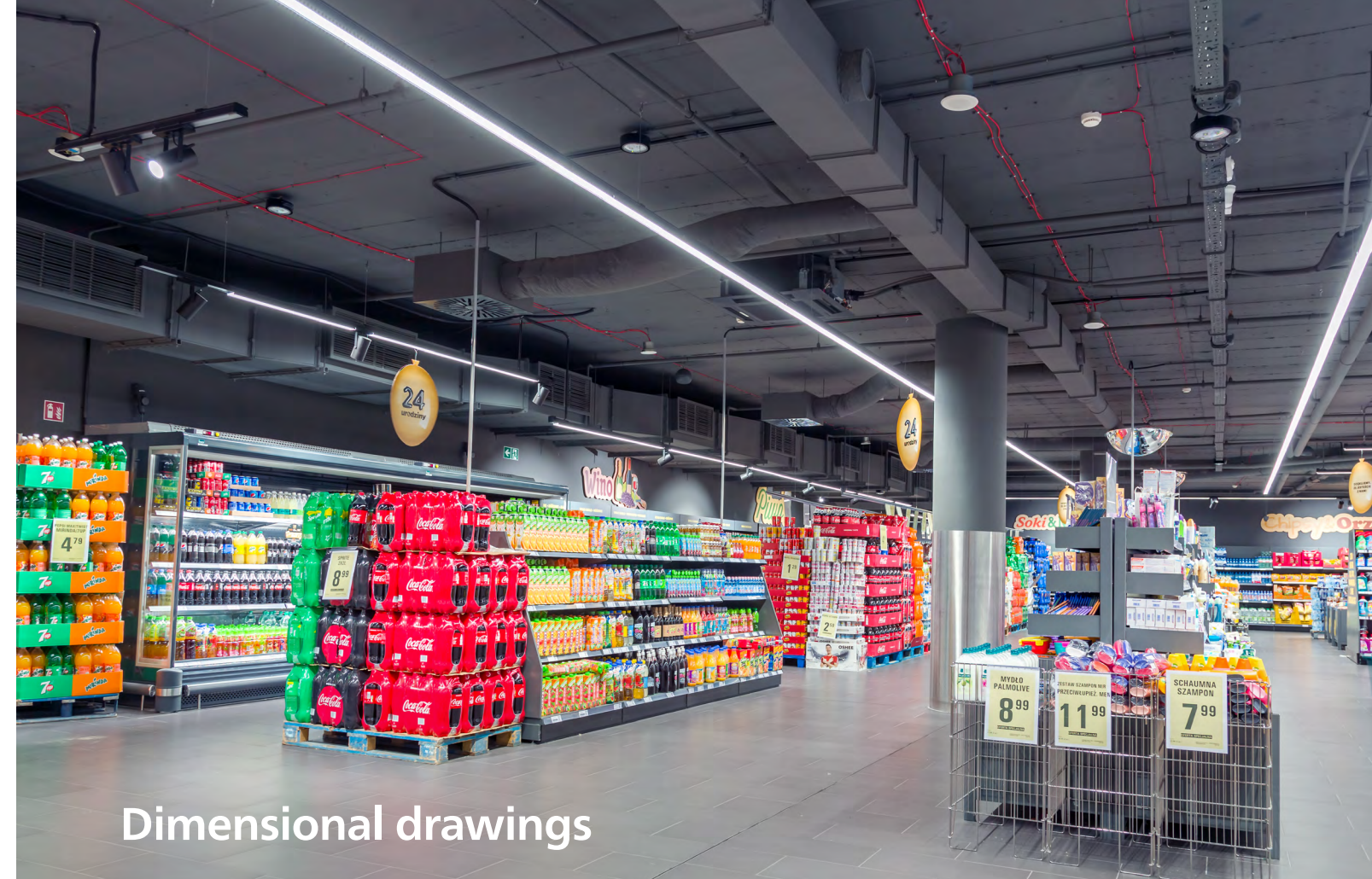
Wide beam

Technical details

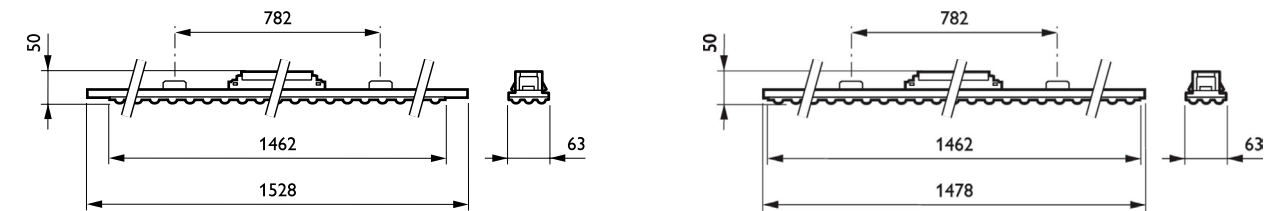
Light panel	Maxos LED Industry (4MX850) for Maxos light lines Maxos LED Insert (4MX400) for TTX400 light lines
Flux offer	Up to 8,000 lm
Efficacy	Up to 169 lm/W
UGR	16 for narrow beam 22 for wide beam
Correlated color temperature	3000K 4000K
Color Rendering Index	>80
Lumen maintenance at 50,000 hours	L90
Lumen maintenance at 100,000 hours	L80
Power/Data supply	On/off (non dimmable), DALI dimmable and Interact Ready
Mains voltage	220-240 V / 50-60 Hz
Color	White (WH) and Silver (SI)
Connection	Electrical contact via standard Maxos through-wiring connector
Maintenance	Via clicking out the electrical unit from the rail
Installation	Fixation on the Maxos and TTX400 Trunking rails with springs

	Flux (lm)	Power	Efficacy
LED405	4,000	24	166.67
LED555	5,500	32.5	169.23
LED665	6,600	39	169.23
LED805	8,000	48	166.67

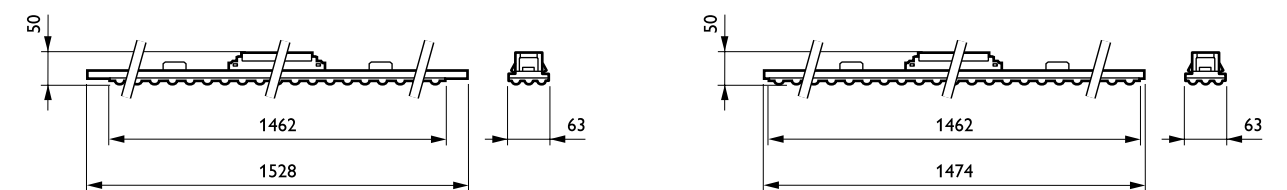
CCT 4000K



Dimensional drawings



Maxos LED Industry (4MX850)



Maxos LED Insert (4MX400)



Maxos universal

Maxos universal is a dedicated portfolio of light panels designed to fit into diverse installed trunking backbones. The light panels carry new through-wiring, reducing dependence on old installation wiring. The old trunks are used only for securing the panels, which can be done with two included sets of specially designed springs. Together, these spring sets ensure a working solution for all compatible trunks. Maxos universal panels are also equipped with a dip switch driver for easily configuring the required lumen output at the project site. In addition, the Maxos universal portfolio offers easy-to-use accessories like blind units/feed-in connectors and through-wiring harnesses.

Technical details

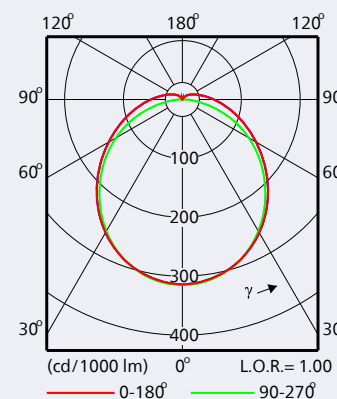
Light panel	Maxos universal
Flux offer	Up to 8,000 lm. Choice of 4,700 lm or 5,900 lm selected via dip switch.
Efficacy	Up to 168 lm/W
Correlated color temperature	3000K 4000K
Color Rendering Index	>80
Lumen maintenance at 50,000 hours	L90
Lumen maintenance at 100,000 hours	L80
Power supply	On/off (non dimmable - flux selection via dip switch), DALI dimmable
Mains voltage	220-240 V / 50-60 Hz
Color	White (WH)
Installation	Fixation on compatible rails. Refer to the compatibility list.



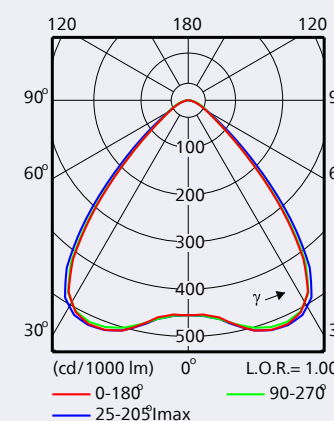
12NC	Luminaire description	Lumen output (lm)	System power (W)	Luminaire Efficacy (lm/W)
929001695106	LL515S 46S_57S/840 WB PSU UNIV TW3 WH	4,700	28	168
929001695106	LL515S 46S_57S/840 WB PSU UNIV TW3 WH	5,900	35.5	166
929001681706	LL515S 42S/840 PSD WB UNIV TW3 WH	4,200	25	168
929001694906	LL515S 80S/840 PSD WB UNIV TW3 WH	8,000	50	160
910925869515	LL515S 46S_57S/840 PCO PSU UNIV TW3 WH	4,200	28	150
910925869516	LL515S 46S_57S/840 PCO PSU UNIV TW3 WH	5,200	35.5	146
910925869517	LL515S 42S/840 PSD PCO UNIV TW3 WH	3,700	25	148
910925869519	LL515S 80S/840 PSD PCO UNIV TW3 WH	7,000	50	140

CCT 4000K

Beam shape diagrams



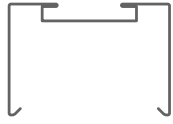


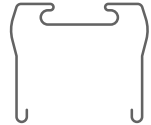

Polycarbonate Opal



Wide beam

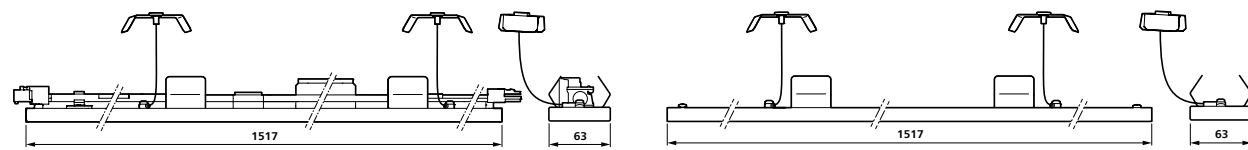
Compatibility list and trunking diagrams

Both spring A and B are included in the box

System	Spring			
Regent	A			
Regiolux SDT		Regent	Regiolux SDT	Ridi VLT XX
Ridi VLT XX				
Siemens/Siteco 5LS		Siemens/Siteco 5LS	Trilux E-Line	
Trilux E-Line				

System	Spring		
Siteco Modario	B		
Zumtobel ZX2		Siteco Modario	Zumtobel ZX2

Dimensional drawings



Maxos universal



Bespoke solutions

We can support dedicated requests tailored for a specific customer need. We design, test, and release these bespoke solutions according to the relevant norms. Production and delivery can be scaled at the required pace. Please reach out to your sales representative if you need more information.

Case study: Koopmanndruck

Stuhr, Germany

Druckerei August Koopmann GmbH is an environmentally conscious printer for whom sustainability and climate neutral production are important. The lighting in their 3500 m² production facility needed to be converted to LED.

Print workers specifically need light that is kind to the eyes with excellent color rendering. It was also important to Koopmanndruck that their new lighting was reliable and energy-efficient. They chose Philips Maxos LED, which offers color rendering far exceeding the required standards.

In three days, 800 fluorescent light tubes were replaced with 335 Maxos LED lightlines (with both narrow and wide beam optics). Illumination was increased from 200–300 lux to 700 lux in some spaces, creating a more pleasant, safe, and healthy environment for staff. Koopmanndruck achieved energy savings of up to 67% as compared to fluorescent lighting, CO₂ emissions were reduced by up to 70%, and overall annual savings were estimated at €27,000.

800
fluorescent light
tubes replaced
in just three days

70%
reduction in
CO₂ emissions

67%
energy savings



"Sustainability is an important part of our company policy. But naturally, profitability is also a decisive factor. With LED lighting we achieve both."

Knut Winneckens,
Manager Koopmanndruck

Ordering information

4MX850 Maxos LED Industry		
Material	Material description	Full EOC
910500457964	4MX850 581 LED80S/840 PSD NB WH	871869687641199
910500457965	4MX850 581 LED80S/840 PSD WB WH	871869687643599
910500460001	4MX850 581 LED40S/840 PSD-CLO WB WH	871869688067899
910500460003	4MX850 581 LED66S/840 PSD-CLO WB WH	871869688071599
910500460004	4MX850 581 LED80S/840 PSD-CLO WB WH	871869688073999
910500460007	4MX850 581 LED80S/840 PSD NB WH C-2R	871869688105799
910500460008	4MX850 581 LED80S/840 PSD WB WH C-2R	871869688106499
910500460009	4MX850 581 LED66S/840 PSD NB WH C-2R	871869688107199
910500460010	4MX850 581 LED66S/840 PSD WB WH C-2R	871869688108899
910500460011	4MX850 491 LED40S/840 PSD-CLO WB WH	871869688179899
910500460012	4MX850 491 LED55S/840 PSD-CLO WB WH	871869688181199
910500460013	4MX850 491 LED66S/840 PSD-CLO WB WH	871869688183599
910500460014	4MX850 491 LED80S/840 PSD-CLO WB WH	871869688185999
910500460015	4MX850 491 LED55S/840 PSD-CLO NB WH	871869688187399
910500460016	4MX850 491 LED66S/840 PSD-CLO NB WH	871869688189799
910500460017	4MX850 491 LED80S/840 PSD-CLO NB WH	871869688191099
910500460023	4MX850 491 LED80S/840 PSD-CLO DA20 WH	871869688203099
910500460042	4MX850 491 LED66S/830 PSD DA20 SI	871869688167599
910500460043	4MX850 491 LED66S/840 PSD DA20 SI	871869688169999
910500460048	4MX850 581 LED80S/840 PSD VWB WH	871869688250499
910500460049	4MX850 491 LED80S/840 PSD VWB WH	871869688251199
910500460050	4MX850 491 LED55S/840 PSD VWB WH	871869688272699
910500460052	4MX850 491 LED66S/830 PSD WB WH C-2R	871869688330399
910500460060	4MX850 581 LED66S/830 PSD WB WH	871869688500099
910500460067	4MX850 491 LED66S/830 PSD VWB WH C-2R	871869691135899
910500460070	4MX850 581 LED40S/840 PSD WB WH C-2R	871869691296699
910500460075	4MX850 491 LED80S/840 PSD VWB WH C-2R	871869691359899
910500460076	4MX850 581 LED80S/840 PSD VWB WH C-2R	871869691360499
910500460085	4MX850 491 LED80S/830 PSD NB WH	871869691715299

4MX850 Maxos LED Industry		
Material	Material description	Full EOC
910500460086	4MX850 581 LED55S/840 PSD VWB WH	871869691775699
910500460187	4MX850 491 LED80S/840 PSD A20 WH	871869697220599
910500460215	4MX850 491 LED80S/840 PSD DA20 WH	871869697427899
910500460216	4MX850 491 LED66S/840 PSD DA20 WH C-2R	871869697428599
910500460217	4MX850 491 LED66S/840 PSD NB WH C-2R	871869697429299
910500460218	4MX850 491 LED66S/840 PSD WB WH C-2R	871869697430899
910500460219	4MX850 491 LED80S/840 PSD DA20 WH C-2R	871869697431599
910500460220	4MX850 491 LED80S/840 PSD NB WH C-2R	871869697432299
910500460221	4MX850 491 LED80S/840 PSD WB WH C-2R	871869697433999
910500460222	4MX850 581 LED66S/840 PSD DA20 WH	871869697434699
910500460223	4MX850 581 LED80S/840 PSD DA20 WH	871869697435399
910500460224	4MX850 581 LED66S/840 PSD DA20 WH C-2R	871869697436099
910500460225	4MX850 581 LED80S/840 PSD DA20 WH C-2R	871869697437799
910500460226	4MX850 581 LED66S/840 PSD-CLO DA20 WH	871869697438499
910500460227	4MX850 581 LED80S/840 PSD-CLO DA20 WH	871869697439199
910500460257	4MX883 491 LED55S/840 PSD DA20 WH ELB3	871869697500899
910500460258	4MX883 491 LED55S/840 PSD NB WH ELB3	871869697501599
910500460259	4MX883 491 LED55S/840 PSD WB WH ELB3	871869697502299
910500460263	4MX883 491 LED66S/840 PSD DA20 WH ELB3	871869697506099
910500460264	4MX883 491 LED66S/840 PSD NB WH ELB3	871869697507799
910500460265	4MX883 491 LED66S/840 PSD WB WH ELB3	871869697508499
910500460266	4MX883 491 LED55S/840 PSD DA20 WHELBC-2R	871869697537499
910500460267	4MX883 491 LED55S/840 PSD NB WH ELB3C-2R	871869697538199
910500460268	4MX883 491 LED55S/840 PSD WB WH ELB3C-2R	871869697539899
910500460269	4MX883 491 LED66S/840 PSD DA20 WHELBC-2R	871869697540499
910500460270	4MX883 491 LED66S/840 PSD NB WH ELB3C-2R	871869697541199
910500460271	4MX883 491 LED66S/840 PSD WB WH ELB3C-2R	871869697542899
910500460273	4MX883 581 LED55S/840 PSD DA20 WH ELB3	871869697544299
910500460274	4MX883 581 LED55S/840 PSD NB WH ELB3	871869697545999

4MX850 Maxos LED Industry		
Material	Material description	Full EOC
910500460275	4MX883 581 LED55S/840 PSD WB WH ELB3	871869697546699
910500460279	4MX883 581 LED66S/840 PSD DA20 WH ELB3	871869697550399
910500460280	4MX883 581 LED66S/840 PSD WB WH ELB3	871869697551099
910500460281	4MX883 581 LED55S/840 PSD DA20 WHELBC-2R	871869697552799
910500460282	4MX883 581 LED55S/840 PSD NB WH ELB3C-2R	871869697553499
910500460283	4MX883 581 LED55S/840 PSD WB WH ELB3C-2R	871869697554199
910500460284	4MX883 581 LED66S/840 PSD DA20 WHELBC-2R	871869697555899
910500460285	4MX883 581 LED66S/840 PSD NB WH ELB3C-2R	871869697556599
910500460286	4MX883 491 LED80S/840 PSD NB WH ELB3	871869697593099
910500460291	4MX850 491 LED80S/830 PSD WB WH	871869697650099
910500460292	4MX850 581 LED80S/840 PSD WB SI	871869697652499
910500460390	4MX850 491 LED40S/840 PSD O WH	871869697846799
910500460391	4MX850 491 LED55S/840 PSD WB WH C-2R	871869697847499
910500460392	4MX850 581 LED40S/840 PSD NB WH C-2R	871869697848199
910500460393	4MX850 581 LED55S/840 PSD NB WH C-2R	871869697849899
910500460407	4MX850 491 LED40S/840 PSD VWB WH	871869907544699
910500460408	4MX850 581 LED66S/840 PSD WB SI	871869907553899
910500460409	4MX850 491 LED55S/830 PSD VWB WH	871869907588099
910500460410	4MX850 491 LED66S/840 PSD WB SI	871869907589799
910500460411	4MX850 581 LED55S/840 PSD VWB WH C-2R	871869907590399
910500460414	4MX850 491 LED55S/840 PSD A20 WH C-2R	871869907612299
910500460415	4MX850 491 LED66S/840 PSD VWB WH C-2R	871869907613999
910500460419	4MX850 491 LED80S/830 PSD WB SI	871869907650499
910500460420	4MX850 491 LED40S/840 PSD WB WH C-2R	871869907651199
910500460430	4MX850 491 LED55S/830 PSD VWB SI	871869907676499
910500460431	4MX850 491 LED66S/830 PSD A20 WH	871869907680199
910500460433	4MX850 491 LED66S/830 PSD WB SI	871869907694899
910500460434	4MX850 491 LED66S/840 PSD VWB WH	871869907695599
910500460435	4MX850 491 LED80S/830 PSD A20 WH	871869907696299

4MX850 Maxos LED Industry		
Material	Material description	Full EOC
910500460438	4MX850 491 LED80S/840 PSD DA35 WH	871869907722899
910500460441	4MX850 581 LED55S/840 PSD A20 WH	871869907733499
910500460451	4MX850 491 LED80S/830 PSD A20 SI	871869907776199
910500460452	4MX850 491 LED80S/830 PSD DA20 SI	871869907777899
910500460453	4MX850 491 LED80S/830 PSD VWB WH	871869907799099
910500460454	4MX850 491 LED80S/830 PSD VWB WH C-2R	871869907800399
910500460456	4MX850 581 LED80S/830 PSD WB WH C-2R	871869907815799
910500460457	4MX850 491 LED40S/840 PSD-CLO VWB WH	871869907816499
910500460459	4MX850 581 LED66S/840 PSD VWB WH	871869907834899
910500460467	4MX883 491 LED80S/830 PSD NB WH ELP3	871869907873799
910500460468	4MX883 491 LED80S/840 PSD NB WH ELP3	871869907874499
910500460474	4MX850 491 LED40S/840 PSD DA35 SI	871869907946899
910500460476	4MX850 581 LED80S/830 PSD VWB WH	871869907957499
910500460477	4MX850 581 LED80S/830 PSD WB WH	871869907958199
910500460483	4MX850 581 LED80S/840 PSD A20 WH	871869907972799
910500460487	4MX883 491 LED66S/840 PSD WB WH ELP3	871869907976599
910500460488	4MX883 581 LED66S/840 PSD WB WH ELP3	871869907977299
910500460491	4MX883 491 LED66S/840 PSD WB WH ELD3	871869907980299
910500460492	4MX883 581 LED66S/840 PSD WB WH ELD3	871869907981999
910500460502	4MX850 491 LED80S/840 PSD WB SI	871869908008299
910500460505	4MX850 491 LED80S/840 PSD NB SI	871869908024299
910500460510	4MX883 491 LED80S/840 PSD NB WH ELD3	871869908066299
910500460518	4MX850 581 LED66S/830 PSD WB SI	871869908103499
910500460531	4MX850 491 LED40S/830 PSD WB WH C-2R	871869908191199
910500460537	4MX850 491 LED40S/830 PSD WB WH C-2R	871869908277299
910500460538	4MX850 491 LED55S/840 PSD NB WH C-2R	871869908280299
910500460539	4MX850 491 LED80S/830 PSD WB WH C-2R	871869908281999
910500460543	4MX883 491 LED80S/840 PSD WB WH ELB3	871869908308399
910500460547	4MX850 491 LED80S/830 PSD-CLO WB WH	871869908331199

Ordering information

4MX850 Maxos LED Industry		
Material	Material description	Full EOC
910500460548	4MX850 491 LED55S/840 PSD A20 SI C-2R	871869908333599
910500460549	4MX850 491 LED55S/840 PSD NB SI C-2R	871869908335999
910500460550	4MX850 491 LED55S/840 PSD WB SI C-2R	871869908337399
910500460559	4MX850 491 LED80S/840 PSD-CLO VWB WH	871869908411099
910500460560	4MX850 491 LED40S/840 PSD A20 WH C-2R	871869908413499
910500460561	4MX850 491 LED66S/840 PSD A20 WH C-2R	871869908415899
910500460562	4MX850 491 LED80S/840 PSD A20 WH C-2R	871869908417299
910500460566	4MX850 581 LED55S/840 PSD VWB SI	871869908439499
910500460582	4MX850 491 LED40S/830 PSD VWB WH C-2R	871869922066299
910500460583	4MX850 491 LED55S/830 PSD A20 WH C-2R	871869922074799
910500460584	4MX850 491 LED55S/830 PSD WB WH C-2R	871869922076199
910500460589	4MX850 491 LED40S/830 PSD A20 WH C-2R	871869922128799
910500460591	4MX850 491 LED66S/830 PSD NB SI	871869922151599
910500460593	4MX850 491 LED40S/830 PSD DA35 WH	871869922172099
910500460594	4MX850 491 LED40S/840 PSD DA35 WH	871869922174499
910500460595	4MX850 581 LED55S/840 PSD WB WH C-2R	871869922178299
910500460596	4MX850 581 LED66S/840 PSD VWB WH C-2R	871869922180599
910500460598	4MX850 491 LED80S/830 PSD NB SI	871869922236999
910500460601	4MX883 581 LED80S/840 PSD WB WH ELB3	871869922258199
910500460607	4MX850 491 LED66S/840 PSD-CLO A20 SI	871869922313799
910500460608	4MX850 491 LED80S/840 PSD-CLO WB SI	871869922315199
910500460617	4MX850 581 LED55S/830 PSD WB WH C-2R	871869922437099
910500460618	4MX850 581 LED55S/830 PSD WB SI C-2R	871869922439499
910500460619	4MX850 581 LED80S/830 PSD WB SI C-2R	871869922441799
910500460620	4MX850 581 LED80S/840 PSD WB SI C-2R	871869922443199
910500460626	4MX850 491 LED40S/830 PSD O WH	871869922494399
910500460630	4MX850 581 LED66S/830 PSD VWB WH	871869922532299
910500460632	4MX850 491 LED66S/830 PSD NB WH C-2R	871869922547699
910500460634	4MX850 491 LED66S/830 PSD VWB SI	871869922551399

4MX850 Maxos LED Industry		
Material	Material description	Full EOC
910500460636	4MX850 491 LED55S/840 PSD VWB WH C-2R	871869922555199
910500460637	4MX850 491 LED66S/840 PSD-VLC WB WH	871869922602299
910500460642	4MX883 491 LED55S/840 PSD WB WH ELD3	871869922667199
910500460657	4MX850 491 LED66S/840 PSD O WH	871869922884299
910500460665	4MX850 491 LED66S/830 PSD A20 SI	871869951034399
910500460674	4MX850 491 LED80S/840 PSD-VLC WB SI	871869951105099
910500460675	4MX850 491 LED66S/840 PSD-VLC A20 SI	871869951107499
910500465380	4MX850 491 40S/840 PSD-VLC DA35-WB WH	871869940219899
910500465381	4MX850 491 40S/840 PSD-VLC DAFRVWBFRWH	871869940220499
910500465382	4MX850 541 32S/840 PSD-VLC 2WB/2DA35WH	871869940221199
910500465383	4MX850 541 32S/840 PSD-VLC DAFRVWBFRWH	871869940222899
910500465384	4MX850 491 32S/840 PSD-VLC DA35WBGA70W	871869940223599
910500465385	4MX850 491 32S/840 PSD-VLC DAVWBFRGA70W	871869940224299
910500465986	4MX850 581 LED55S/840 PSD-VLC WB WH C-2R	871869996192399
910500465989	4MX850 491 LED40S/830 PSD VWB WH	871869996197899
910505100379	4MX883 491 LED80S/830 PSD WB WH ELB3	871869996567999
910505103025	4MX883 491 LED66S/840 PSD VWB SI ELP3	871951496801199
910505103026	4MX850 491 LED80S/850 PSD WB SI	871951496805999
910505103027	4MX883 581 LED66S/840 PSD NB WH ELP3	871951496807399
910505103045	4MX883 491 LED80S/840 PSD WB WH ELD3	871951496849399
910505103087	4MX850 491 LED40S/840 SIA WB WH C-2R	871951496900199
910505103088	4MX850 491 LED66S/840 SIA NB WH C-2R	871951496901899
910505103089	4MX850 491 LED66S/840 SIA WB WH C-2R	871951496902599
910505103090	4MX850 491 LED80S/840 SIA NB WH C-2R	871951496903299
910505103091	4MX850 491 LED80S/840 SIA WB WH C-2R	871951496904999
910505103093	4MX883 491 LED55S/840 PSD WB SI ELP3	871951496906399
910505103427	4MX883 581 LED55S/840 PSD WB WH ELP3	872016910209599
910505103428	4MX850 581 LED80S/840 SIA WB WH C-2R	872016910212599
910505103516	4MX850 491 LED55S/830 PSD DA35 SI	872016910610999

4MX850 Maxos LED Industry		
Material	Material description	Full EOC
910505103578	4MX883 491 LED80S/840 PSD WB WH ELP3	872016910880699
910505103669	4MX850 581 LED40S/840 PSD VWB WH	872016961509099
910505103823	4MX883 581 LED80S/840 PSD NB WH ELP3 C-2	872016962216699
910505103833	4MX850 491 LED80S/840 PSD-CLO DA20 SI	872016962225899
910505103991	4MX883 581 LED66S/840 PSD WB WH ELP3 C-2	872016962214299
910629120026	4MX850 491 LED55S/830 PSD NB WH	403073266117699
910629120126	4MX850 491 LED55S/840 PSD NB WH	403073266118399
910629120226	4MX850 491 LED55S/830 PSD WB WH	403073266119099
910629120326	4MX850 491 LED55S/840 PSD WB WH	403073266120699
910629120426	4MX850 581 LED55S/830 PSD NB WH	403073266121399
910629120526	4MX850 581 LED55S/840 PSD NB WH	403073266122099
910629120626	4MX850 581 LED55S/830 PSD WB WH	403073266123799
910629120726	4MX850 581 LED55S/840 PSD WB WH	403073266124499
910629120826	4MX850 491 LED55S/830 PSD NB SI	403073266125199
910629120926	4MX850 491 LED55S/840 PSD NB SI	403073266126899
910629121026	4MX850 491 LED55S/830 PSD WB SI	403073266127599
910629121126	4MX850 491 LED55S/840 PSD WB SI	403073266128299
910629121226	4MX850 581 LED55S/830 PSD NB SI	403073266129999
910629121326	4MX850 581 LED55S/840 PSD NB SI	403073266130599
910629121426	4MX850 581 LED55S/830 PSD WB SI	403073266131299
910629121526	4MX850 581 LED55S/840 PSD WB SI	403073266132999
910629121626	4MX850 491 LED40S/830 PSD NB WH	403073266165799
910629121726	4MX850 491 LED40S/840 PSD NB WH	403073266166499
910629121826	4MX850 491 LED40S/830 PSD WB WH	403073266167199
910629121926	4MX850 491 LED40S/840 PSD WB WH	403073266168899
910629122026	4MX850 581 LED40S/830 PSD NB WH	403073266169599
910629122126	4MX850 581 LED40S/840 PSD NB WH	403073266170199
910629122226	4MX850 581 LED40S/830 PSD WB WH	403073266179499
910629122326	4MX850 581 LED40S/840 PSD WB WH	403073266171899

4MX850 Maxos LED Industry		
Material	Material description	Full EOC
910629122426	4MX850 491 LED40S/830 PSD NB SI	403073266172599
910629122526	4MX850 491 LED40S/840 PSD NB SI	403073266173299
910629122626	4MX850 491 LED40S/830 PSD WB SI	403073266174999
910629122726	4MX850 491 LED40S/840 PSD WB SI	403073266175699
910629122826	4MX850 581 LED40S/830 PSD NB SI	403073266176399
910629122926	4MX850 581 LED40S/840 PSD NB SI	403073266177099
910629123026	4MX850 581 LED40S/830 PSD WB SI	403073266180099
910629123126	4MX850 581 LED40S/840 PSD WB SI	403073266178799
910629124826	4MX850 491 LED55S/830 PSD DA20 WH	403073266261699
910629124926	4MX850 491 LED55S/840 PSD DA20 WH	403073266262399
910629125026	4MX850 581 LED55S/830 PSD DA20 WH	403073266263099
910629125126	4MX850 581 LED55S/840 PSD DA20 WH	403073266264799
910629125226	4MX850 491 LED55S/830 PSD DA20 SI	403073266265499
910629125326	4MX850 491 LED55S/840 PSD DA20 SI	403073266266199
910629125426	4MX850 581 LED55S/830 PSD DA20 SI	403073266267899
910629125526	4MX850 581 LED55S/840 PSD DA20 SI	403073266268599
910629125626	4MX850 491 LED40S/830 PSD DA20 WH	403073266269299
910629125726	4MX850 491 LED40S/840 PSD DA20 WH	403073266270899
910629125826	4MX850 581 LED40S/830 PSD DA20 WH	403073266271599
910629125926	4MX850 581 LED40S/840 PSD DA20 WH	403073266272299
910629126026	4MX850 491 LED40S/830 PSD DA20 SI	403073266273999
910629126126	4MX850 491 LED40S/840 PSD DA20 SI	403073266274699
910629126226	4MX850 581 LED40S/830 PSD DA20 SI	403073266275399
910629126326	4MX850 581 LED40S/840 PSD DA20 SI	403073266276099
910629158026	4MX850 491 LED66S/840 PSD DA20 WH	403073266601099
910629158126	4MX850 491 LED66S/840 PSD WB WH	403073266602799
910629158226	4MX850 491 LED66S/840 PSD NB WH	403073266603499
910629160026	4MX850 491 LED66S/830 PSD DA20 WH	403073266692899
910629160126	4MX850 491 LED66S/830 PSD WB WH	403073266693599

Ordering information

4MX850 Maxos LED Industry		
Material	Material description	Full EOC
910629160226	4MX850 491 LED66S/830 PSD NB WH	403073266694299
910629160326	4MX850 581 LED66S/840 PSD WB WH	403073266695999
910629160426	4MX850 581 LED66S/840 PSD NB WH	403073266696699
910629160526	4MX850 491 LED40S/840 PSD A20 WH	403073266744499
910629160626	4MX850 491 LED55S/840 PSD A20 WH	403073266745199
910629160726	4MX850 491 LED55S/830 PSD A20 WH	403073266756799
910629160826	4MX850 491 LED55S/830 PSD A20 SI	403073266757499
910629160926	4MX850 491 LED55S/840 PSD A20 SI	403073266758199
910629161026	4MX850 491 LED40S/830 PSD A20 WH	403073266759899
910629161126	4MX850 491 LED40S/830 PSD A20 SI	403073266760499
910629161226	4MX850 491 LED40S/840 PSD A20 SI	403073266761199
910629162126	4MX850 491 LED66S/840 PSD A20 WH	403073266770399
910629162226	4MX850 491 LED66S/840 PSD A20 SI	403073266771099
910629163026	4MX850 491 LED66S/840 PSD NB SI	403073266878699
910629165226	4MX883 581 LED66S/840 PSD WB WH ELB3C-2R	403073267384199
910629165626	4MX850 491 LED55S/840 PSD DA35 SI	403073267176299
910629165726	4MX850 581 LED55S/840 PSD DA35 SI	403073267177999
910629165926	4MX850 491 LED55S/840 PSD DA35 WH	403073267179399
910629166026	4MX850 491 LED66S/840 PSD DA35 WH	403073267180999
910629166126	4MX850 581 LED55S/840 PSD DA35 WH	403073267181699
910629167426	4MX850 491 LED80S/840 PSD NB WH	403073267281399
910629167526	4MX850 491 LED80S/840 PSD WB WH	403073267282099
910629167926	4MX883 581 LED66S/830 PSD WB WH ELB3C-2R	403073267298199
910629168326	4MX850 581 LED66S/830 PSD WB WH C-2R	403073267302599
910771118809	4MX850 581 LED66S/840 PSD-VLC DA20 WH	871869939290199
910771118810	4MX850 581 LED55S/840 PSD-VLC WB WH	871869939291899
910771118811	4MX850 581 LED55S/840 PSD-VLC DA20 WH	871869939292599
910771118812	4MX850 581 LED66S/840 PSD-VLC WB WH	871869939293299
910771118934	4MX850 491 LED80S/830 PSD VWB SI	871869939462299

4MX850 Maxos LED Industry		
Material	Material description	Full EOC
910771119289	4MX850 491 LED55S/840 PSD-VLC WB SI	871869939951199
910771124644	4MX850 491 LED80S/830 PSD-VLC VWB SI	871869940415499
910771124645	4MX883 491 LED80S/830 PSD-VLC VWB ELB3SI	871869940416199
910771124658	4MX850 581 LED40S/840 PSD O WH	871869940433899
910771124666	4MX850 491 LED80S/830 PSD-VLC VWB WH	871869940445199
910771124667	4MX883 491 LED80S/830 PSD-VLC VWB WHEL3	871869940446899
910771124668	4MX850 491 LED66S/865 PSD NB WH	871869940449999
910771124669	4MX850 491 LED80S/865 PSD WB WH	871869940450599
910771124670	4MX850 491 LED80S/865 PSD NB WH	871869940451299
910771124671	4MX850 491 LED66S/865 PSD WB WH	871869940452999
910771124672	4MX850 581 LED66S/865 PSD WB WH	871869940453699
910771124673	4MX850 491 LED40S/850 PSD WB WH	871869940454399
910771124674	4MX850 581 LED66S/850 PSD WB WH	871869940455099
910771124675	4MX850 491 LED66S/850 PSD WB WH	871869940456799
910771124676	4MX850 491 LED80S/850 PSD WB WH	871869940457499
910771124677	4MX850 491 LED80S/850 PSD NB WH	871869940458199
910771125064	4MX850 491 LED66S/840 PSD VWB SI	871869941144299
910771125472	4MX850 491 LED80S/830 PSD-VLC DA20 WH	871869999194499
910771125853	4MX850 491 LED55S/830 PSD-VLC WB WH	871869999576899
910771126013	4MX850 491 LED80S/840 PSD-VLC WB WH	871869999740399
910771126015	4MX850 491 LED80S/840 PSD-VLC NB WH	871869999742799
910771126016	4MX850 491 LED66S/840 PSD-VLC NB WH	871869999743499
910771126088	4MX850 491 LED80S/830 PSD-VLC DA20 SI	871869999824099
910771126722	4MX850 491 LED66S/840 PSD-VLC DA35 WH	871951400519899
910771126987	4MX850 491 LED80S/840 PSD DA20 SI	871951400822999
910771128385	4MX850 491 LED66S/840 PSD-VLC NB WH C-2R	871016362795399
910771128834	4MX850 491 LED80S/865 PSD NB WH C-2R	871016363304699
910771128835	4MX883 491 LED80S/830 PSD-VLC NB WHELP3	871016363306099
910771128836	4MX850 491 LED80S/840 PSD A20 WH C-2R	871016363308499

4MX850 Maxos LED Industry		
Material	Material description	Full EOC
910771128837	4MX850 491 LED80S/830 PSD A20 WH C-2R	871016363310799
910771128838	4MX883 491 LED80S/830 PSD O WH ELD3	871016363312199
910771128901	4MX850 491 LED55S/830 PSD O WH	871016363376399
910771142440	4MX883 491 LED80S/840 PSD NB WH ELP3C-2R	871016363926099
910771142650	4MX883 491 LED55S/840 PSD WB WH ELD3 C-2	871016364138699
910771142651	4MX883 491 LED55S/840 PSD NB WH ELD3 C-2	871016364140999
910771142652	4MX883 491 LED66S/840 PSD NB WH ELD3 C-2	871016364142399
910771142776	4MX883 491 LED80S/830 PSD VWB WHEL3C-2R	871016364267399
910771142782	4MX883 491 LED55S/830 PSD VWB ELB3 WH	871016364275899
910771142790	4MX883 491 LED55S/830 PSD VWB ELB3 SI	871016364285799
910771142792	4MX850 581 LED40S/850 PSD WB WH	871016364289599
910771142809	4MX883 491 LED55S/830 PSD VWB WH ELP3	871016364307699

4MX400 Maxos LED Insert for TTX400		
Material	Material description	Full EOC
910500460028	4MX400 491 LED66S/840 PSD-CLO WB WH	871869688213999
910500460045	4MX400 581 LED80S/840 PSD VWB WH	871869688243699
910500460047	4MX400 581 LED55S/840 PSD VWB WH C-2R	871869688247499
910500460061	4MX433 491 LED55S/840 PSD NB WH ELB3	871869688502499
910500460065	4MX400 581 LED80S/840 PSD A20 WH	871869688577299
910500460078	4MX400 581 LED80S/840 PSD VWB WH C-2R	871869691364299
910500460099	4MX400 491 LED80S/840 PSD DA20 WH	871869697005899
910500460101	4MX400 491 LED66S/840 PSD DA20 WH C-2R	871869697006599
910500460102	4MX400 491 LED66S/840 PSD NB WH C-2R	871869697007299
910500460103	4MX400 491 LED66S/840 PSD WB WH C-2R	871869697008999
910500460104	4MX400 491 LED80S/840 PSD DA20 WH C-2R	871869697009699
910500460105	4MX400 491 LED80S/840 PSD NB WH C-2R	871869697010299
910500460106	4MX400 491 LED80S/840 PSD WB WH C-2R	871869697011999
910500460107	4MX400 581 LED80S/840 PSD DA20 WH	871869697012699

4MX400 Maxos LED Insert for TTX400		
Material	Material description	Full EOC
910500460108	4MX400 581 LED66S/840 PSD DA20 WH C-2R	871869697013399
910500460109	4MX400 581 LED66S/840 PSD NB WH C-2R	871869697014099
910500460110	4MX400 581 LED80S/840 PSD DA20 WH C-2R	871869697015799
910500460111	4MX400 581 LED80S/840 PSD NB WH C-2R	871869697016499
910500460112	4MX400 581 LED80S/840 PSD WB WH C-2R	871869697017199
910500460113	4MX400 491 LED66S/840 PSD-CLO DA20 WH	871869697018899
910500460114	4MX400 491 LED80S/840 PSD-CLO DA20 WH	871869697019599
910500460115	4MX400 581 LED66S/840 PSD-CLO DA20 WH	871869697020199
910500460116	4MX400 581 LED80S/840 PSD-CLO DA20 WH	871869697021899
910500460154	4MX433 491 LED55S/840 PSD DA20 WH ELB3	871869697059199
910500460155	4MX433 491 LED55S/840 PSD WB WH ELB3	871869697060799
910500460159	4MX433 491 LED66S/840 PSD DA20 WH ELB3	871869697064599
910500460160	4MX433 491 LED66S/840 PSD NB WH ELB3	871869697065299
910500460161	4MX433 491 LED66S/840 PSD WB WH ELB3	871869697066999
910500460162	4MX433 491 LED55S/840 PSD DA20WHEL3C-2R	871869697067699
910500460163	4MX433 491 LED55S/840 PSD NB WH ELB3C-2R	871869697068399
910500460164	4MX433 491 LED55S/840 PSD WB WH ELB3C-2R	871869697069099
910500460165	4MX433 491 LED66S/840 PSD DA20WHEL3C-2R	871869697070699
910500460166	4MX433 491 LED66S/840 PSD NB WH ELB3C-2R	871869697071399
910500460167	4MX433 491 LED66S/840 PSD WB WH ELB3C-2R	871869697072099
910500460171	4MX433 581 LED55S/840 PSD DA20 WH ELB3	871869697076899
910500460172	4MX433 581 LED55S/840 PSD NB WH ELB3	871869697077599
910500460173	4MX433 581 LED55S/840 PSD WB WH ELB3	871869697078299
910500460177	4MX433 581 LED66S/840 PSD DA20 WH ELB3	871869697082999
910500460178	4MX433 581 LED66S/840 PSD NB ELB3 WH	871869697083699
910500460179	4MX433 581 LED66S/840 PSD WB WH ELB3	871869697084399
910500460180	4MX433 581 LED55S/840 PSD DA20WHEL3C-2R	871869697085099
910500460181	4MX433 581 LED55S/840 PSD NB WH ELB3C-2R	871869697086799
910500460182	4MX433 581 LED55S/840 PSD WB WH ELB3C-2R	871869697087499

Ordering information

4MX400 Maxos LED Insert for TTX400		
Material	Material description	Full EOC
910500460183	4MX433 581 LED66S/840 PSD DA20WHEL3C-2R	871869697088199
910500460184	4MX433 581 LED66S/840 PSD NB WH ELB3C-2R	871869697089899
910500460185	4MX433 581 LED66S/840 PSD WB WH ELB3C-2R	871869697090499
910500460191	4MX400 491 LED55S/830 PSD VWB WH	871869697346299
910500460192	4MX400 491 LED66S/830 PSD VWB WH C-2R	871869697347999
910500460405	4MX400 491 LED80S/840 PSD A20 WH	871869907513299
910500460423	4MX400 491 LED55S/830 PSD VWB WH C-2R	871869907662799
910500460424	4MX400 491 LED66S/830 PSD NB WH C-2R	871869907663499
910500460425	4MX400 491 LED66S/830 PSD WB WH C-2R	871869907664199
910500460439	4MX400 581 LED80S/830 PSD WB WH	871869907726699
910500460446	4MX400 581 LED55S/840 PSD NB WH C-2R	871869907747199
910500460447	4MX400 581 LED55S/840 PSD WB WH C-2R	871869907748899
910500460450	4MX400 581 LED66S/840 PSD VWB WH	871869907774799
910500460478	4MX400 491 LED66S/830 PSD DA20 WH C-2R	871869907961199
910500460480	4MX400 491 LED40S/840 PSD VWB WH	871869907966699
910500460481	4MX400 491 LED55S/830 PSD WB WH C-2R	871869907967399
910500460495	4MX433 491 LED66S/840 PSD WB WH ELP3	871869907994999
910500460496	4MX433 581 LED66S/840 PSD WB WH ELP3	871869907995699
910500460499	4MX433 491 LED66S/840 PSD WB WH ELD3	871869907998799
910500460501	4MX433 581 LED66S/840 PSD WB WH ELD3	871869907999499
910500460508	4MX400 491 LED40S/830 PSD WB WH C-2R	871869908054999
910500460509	4MX400 491 LED66S/830 PSD WB WH	871869908064899
910500460511	4MX400 491 LED80S/830 PSD A20 WH	871869908071699
910500460512	4MX400 491 LED80S/830 PSD DA20 WH	871869908073099
910500460541	4MX400 581 LED55S/840 PSD VWB WH	871869908285799
910500460544	4MX400 491 LED80S/840 PSD A20 WH C-2R	871869908311399
910500460579	4MX400 491 LED55S/840 PSD VWB WH	871869922060099
910500460587	4MX400 491 LED40S/840 PSD-CLO NB WH C-2R	871869922098399
910500460604	4MX433 491 LED80S/830 PSD NB WH ELD3	871869922281999

4MX400 Maxos LED Insert for TTX400		
Material	Material description	Full EOC
910500460660	4MX400 581 LED40S/840 PSD WB WH C-2R	871869922970299
910500460662	4MX400 491 LED66S/840 PSD-VLC WB WH	871869922996299
910500460667	4MX433 581 LED80S/840 PSD WB WH ELB3	871869951043599
910500460677	4MX400 491 LED66S/830 PSD A20 WH	871869951141899
910500460680	4MX433 491 LED80S/830 PSD-VLC WB WH ELP3	871869951202699
910500460693	4MX400 491 LED40S/840 PSD WB WH C-2R	871869951501099
910500460694	4MX400 491 LED55S/840 PSD WB WH C-2R	871869951502799
910500465679	4MX400 581 LED80S/830 PSD WB WH C-2R	871869941130599
910505103503	4MX433 581 LED80S/840 PSD WB WH ELP3 C-2	872016910589899
910505103651	4MX400 581 LED40S/840 PSD VWB WH	872016961510699
910629123226	4MX400 491 LED40S/830 PSD NB WH	403073266241899
910629123326	4MX400 491 LED40S/830 PSD WB WH	403073266242599
910629123426	4MX400 491 LED40S/840 PSD NB WH	403073266243299
910629123526	4MX400 491 LED40S/840 PSD WB WH	403073266244999
910629123626	4MX400 491 LED55S/830 PSD NB WH	403073266245699
910629123726	4MX400 491 LED55S/830 PSD WB WH	403073266246399
910629123826	4MX400 491 LED55S/840 PSD NB WH	403073266247099
910629123926	4MX400 491 LED55S/840 PSD WB WH	403073266248799
910629124026	4MX400 581 LED40S/830 PSD NB WH	403073266249499
910629124126	4MX400 581 LED40S/830 PSD WB WH	403073266250099
910629124226	4MX400 581 LED40S/840 PSD NB WH	403073266251799
910629124326	4MX400 581 LED40S/840 PSD WB WH	403073266252499
910629124426	4MX400 581 LED55S/830 PSD NB WH	403073266253199
910629124526	4MX400 581 LED55S/830 PSD WB WH	403073266254899
910629124626	4MX400 581 LED55S/840 PSD NB WH	403073266255599
910629124726	4MX400 581 LED55S/840 PSD WB WH	403073266256299
910629128226	4MX400 491 LED40S/830 PSD DA20 WH	403073266317099
910629128326	4MX400 491 LED40S/840 PSD DA20 WH	403073266318799
910629128426	4MX400 491 LED55S/830 PSD DA20 WH	403073266319499

4MX400 Maxos LED Insert for TTX400		
Material	Material description	Full EOC
910629128526	4MX400 491 LED55S/840 PSD DA20 WH	403073266320099
910629128626	4MX400 581 LED40S/830 PSD DA20 WH	403073266321799
910629128726	4MX400 581 LED40S/840 PSD DA20 WH	403073266322499
910629128826	4MX400 581 LED55S/830 PSD DA20 WH	403073266323199
910629128926	4MX400 581 LED55S/840 PSD DA20 WH	403073266324899
910629158726	4MX400 581 LED66S/840 PSD DA20 WH	403073266660799
910629158826	4MX400 581 LED66S/840 PSD WB WH	403073266661499
910629158926	4MX400 581 LED66S/840 PSD NB WH	403073266662199
910629162326	4MX400 491 LED40S/830 PSD A20 WH	403073266772799
910629162426	4MX400 491 LED40S/840 PSD A20 WH	403073266773499
910629162526	4MX400 491 LED55S/830 PSD A20 WH	403073266774199
910629162626	4MX400 491 LED55S/840 PSD A20 WH	403073266775899
910629162726	4MX400 491 LED66S/840 PSD NB WH	403073266833599
910629162826	4MX400 491 LED66S/840 PSD WB WH	403073266834299
910629162926	4MX400 491 LED66S/840 PSD DA20 WH	403073266835999
910629163126	4MX400 581 LED55S/840 PSD A20 WH	403073266903599
910629165526	4MX400 581 LED66S/840 PSD WB WH C-2R	403073267387299
910629166826	4MX400 581 LED80S/840 PSD NB WH	403073267275299
910629167026	4MX400 491 LED80S/830 PSD WB WH	403073267277699
910629167126	4MX400 491 LED80S/840 PSD WB WH	403073267278399
910629167326	4MX400 581 LED80S/840 PSD WB WH	403073267280699
910629168426	4MX400 581 LED66S/830 PSD WB WH C-2R	403073267303299
910629169626	4MX400 491 LED66S/840 PSD A20 WH	403073267363699
910771126089	4MX400 581 LED40S/840 PSD NB WH C-2R	871869999826499
910771126669	4MX400 491 LED66S/840 PSD DA35 WH	871951400463499
910771126670	4MX400 491 LED66S/840 PSD VWB WH	871951400465899
910771126670	4MX400 491 LED66S/840 PSD VWB WH	871951400465899
910771126671	4MX400 491 LED66S/840 PSD O WH	871951400467299
910771126976	4MX400 581 LED66S/830 PSD WB WH	871951400809099

4MX400 Maxos LED Insert for TTX400		
Material	Material description	Full EOC
910771127101	4MX400 491 LED80S/830 PSD WB WH C-2R	871951400935699
910771127995	4MX400 491 LED80S/840 PSD NB WH	871951401925699
910771128306	4MX400 491 LED80S/840 PSD-VLC NB WH C2R	871016362715199
910771128656	4MX433 491 LED80S/840 PSD WB WH ELP3C-2R	871016363088599
910771142828	4MX433 491 LED55S/830 PSD VWB WH ELP3	871016364328199

Maxos universal		
Material	Material description	Full EOC
910925869509	LL515S 46S_57S/840 WB PSU UNIV TW3 WH	872016944055599
910925869510	LL515S 46S_57S/830 WB PSU UNIV TW3 WH	872016944056299
910925869511	LL515S 42S/840 PSD WB UNIV TW3 WH	872016944057999
910925869512	LL515S 42S/830 PSD WB UNIV TW3 WH	872016944058699
910925869513	LL515S 80S/840 PSD WB UNIV TW3 WH	872016944059399
910925869514	LL515S 80S/830 PSD WB UNIV TW3 WH	872016944060999
910925869515	LL515S 46S_57S/840 PCO PSU UNIV TW3 WH	872016944061699
910925869516	LL515S 46S_57S/830 PCO PSU UNIV TW3 WH	872016944062399
910925869517	LL515S 42S/840 PSD PCO UNIV TW3 WH	872016944063099
910925869518	LL515S 42S/830 PSD PCO UNIV TW3 WH	872016944064799
910925869519	LL515S 80S/840 PSD PCO UNIV TW3 WH	872016944065499
910925869520	LL515S 80S/830 PSD PCO UNIV TW3 WH	872016944066199

Maxos universal accessories		
Material	Material description	Full EOC
910925869523	LL515Z WIRING 7x1.5 UNIV WH	872016944068599
910925869521	LL515Z BC UNIV WH	871951477310300
910925869522	LL515Z WIRING 5x1.5 UNIV WH	872016944067899
910925869524	LL515Z CU UNIV WH (5PCS)	871951477313499



© 2023 Signify Holding. All rights reserved. The information provided herein is subject to change, without notice. Signify does not give any representation or warranty as to the accuracy or completeness of the information included herein and shall not be liable for any action in reliance thereon. The information presented in this document is not intended as any commercial offer and does not form part of any quotation or contract, unless otherwise agreed by Signify.

Philips and the Philips Shield Emblem are registered trademarks of Koninklijke Philips N.V. All other trademarks are owned by Signify Holding or their respective owners.

www.lighting.philips.com