

LIGHTOLIER

Flexibility at your fingertips

Downlighting

Modulyte

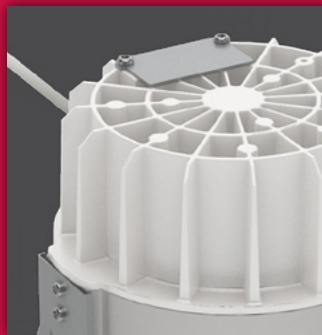
Downlight & Lensed Wall Wash



ModuLyte

**An optimal balance of field flexibility,
performance, and commercial appeal.**

Light engines are designed to be installed without need of frames making ModuLyte flexible to accommodate new construction, remodel, and retrofit applications. Field selectable correlated color temperature and lumens in addition to field installable optics including wall wash allow ModuLyte to adapt to a variety of applications such as office, institution, healthcare, retail, and public.





ModuLyte

At a glance



**An optimal balance of field
flexibility, performance,
and commercial appeal.**

Providing commercial performance, aesthetics and flexibility needed on commercial projects



Selectable CCT and lumen output options

Create peace-of-mind during design and installation with convenient switches that make it easy for contractors to toggle correlated color temperature (CCT) and luminous flux (lumens) to ensure lighting creates the right environment on any project. Field selectability also provides field set capabilities to a single luminaire for varying lighting needs on a variety of projects as well as fewer stocking SKUs, reducing distributor inventory and improving product availability to customers.



Frame-optional design architecture and modular optics

You can be confident that ModuLyte is equipped to support a variety of project conditions with optics that can be field or factory-installed. If decisions change during planning, or when unexpected conditions on-site call for change, you can rest assured that ModuLyte puts flexibility at your fingertips.

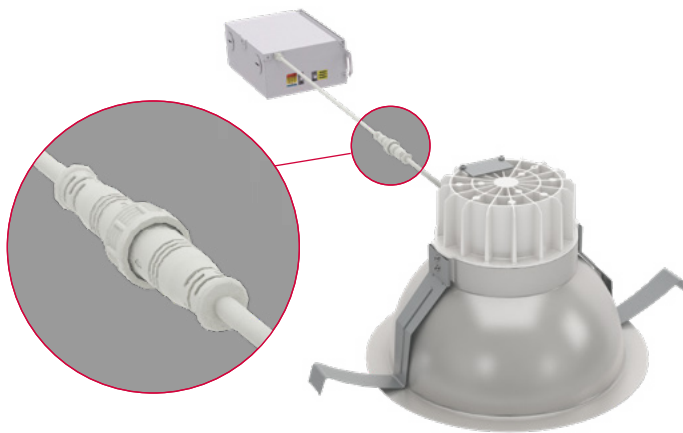


Meet deadlines and project schedules without the stress

By quickly connecting the light engine to its driver via a screw-on Communications Multipurpose Plenum (CPM) cable, this 2-piece assembly gives project crews on-site options when coordinating installation and work in ceilings and makes post-install work a breeze.

ModuLyte

Round Downlight & Lensed Wall Wash



Stress less about deadlines thanks to ModuLyte's contractor-friendly install

- **Quick connect:**
Low voltage plenum-rated cable screws together with twist-lock to attach driver to light engine
- **Retention spring:**
Designed for shallow ceiling plenum and easy maneuvering
- **Easy access:**
To driver after installation



Be equipped with commercial-grade options on day one for renovation, retrofit, and new construction

- **Apertures:**
Round 4", 6", & 8"
- **Frames:**
Optional architecture
- **Optics:**
Interchangeable beams and wall wash
- **Accessories:**
Goof ring available
- **Connectivity:**
Interact ready

AccuRender Technology

The right light brings colors to life.

AccuRender technology helps ensure colors are rendered more accurately and consistently, while doing so as efficiently as CRI 80 products.



Standard CRI 80

Good color rendering and high efficacy



AccuRender

Best color rendering, color preference and high efficacy



Standard CRI 90

Better color rendering and low efficacy

Enjoy design flexibility

Full range of products and options:

- Available soon in across Lightolier portfolio for application flexibility
- Multiple color temperatures (CCTs) and lumen packages offered

Promote savings

High efficacy, with no penalty:

- Energy efficacy compares well to conventional 80 CRI
- Up to 25% more energy savings vs competitor 90 CRI¹
- Helps meet Title 24 requirements

Show your true colors

High color rendering:

- True to life colors that help energize your environment and render better flesh tones critical for healthcare hospitality and retail applications.
- R_a up to 94 CRI
- R_g up to 67 CRI
- G_a up to 99 CRI
- C_g up to 94 CRI
- R_f up to 92 TM-30
- $R_{f,h1}$ up to 91 TM-30
- R_g up to 100 TM-30
- $R_{cs,h1}$ up to -5% TM-30

Achieve color balance

Best in class color consistency:

- Promote aesthetic harmony in your space with ≤ 2 SDCM

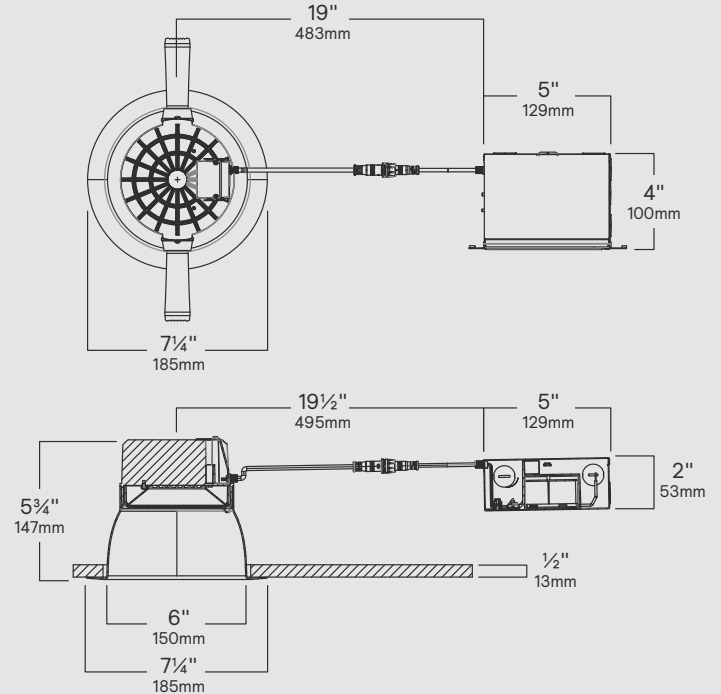
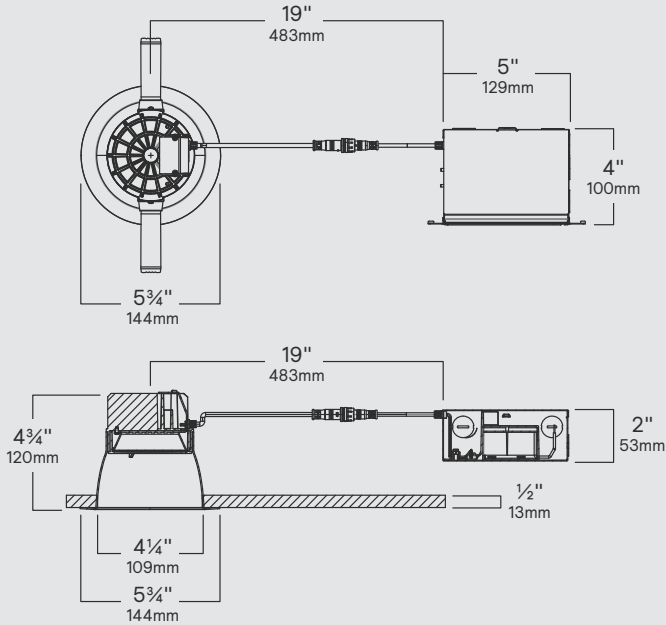
Configurations

Round Downlight & Lensed Wall Wash

4" Aperture



6" Aperture



Styles

DL Downlight
 LW Lensed Wall Wash



Lumens

10 500lm, 750lm, 1000lm
 25 1500lm, 2000lm, 2500lm
 40 3000lm, 3500lm, 4000lm



Beam

M Medium
 W Wide



CRI/CCT

9CS 90 CRI with 2700K, 3000K,
 3500K, 4000K, 5000K CCTs



Styles

DL Downlight
 LW Lensed Wall Wash



Lumens

10 500lm, 750lm, 1000lm
 25 1500lm, 2000lm, 2500lm
 40 3000lm, 3500lm, 4000lm
 50 4500lm, 5000lm



Beam

M Medium
 W Wide



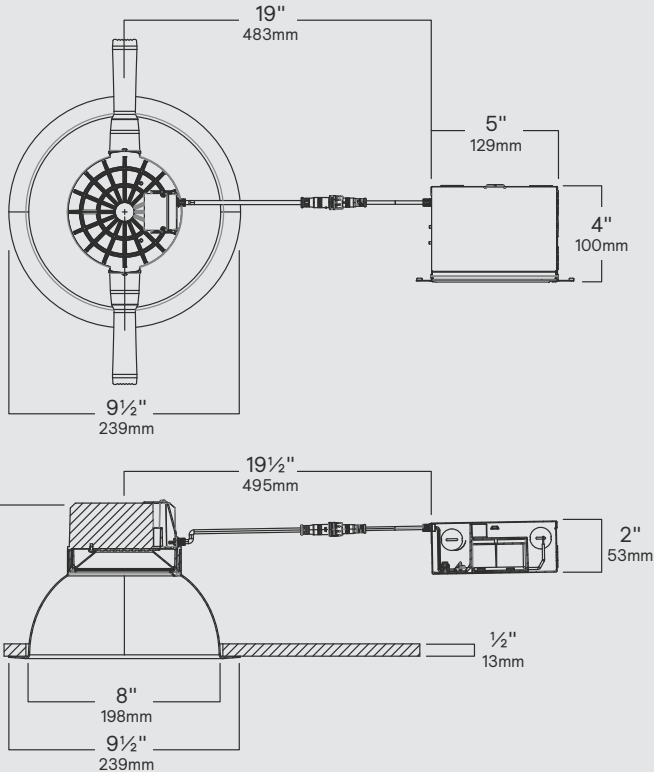
CRI/CCT

9CS 90 CRI with 2700K, 3000K,
 3500K, 4000K, 5000K CCTs

8" Aperture



8" for easy retrofits
and relamping projects



Styles

DL Downlight
LW Lensed Wall Wash



Lumens

10 500lm, 750lm, 1000lm
25 1500lm, 2000lm, 2500lm
40 3000lm, 3500lm, 4000lm
50 4500lm, 5000lm



Beam

M Medium
W Wide



CRI/CCT

9CS 90 CRI with 2700K, 3000K,
3500K, 4000K, 5000K CCTs

Cone Finishes



Specular clear (CL) finish: Most specular and efficient finish, delivers maximum photometric performance but can produce a mirror image effect of the interior space.



White (WH) finish: Brightest illuminated aperture, provides the smoothest transition to most ceilings when off (white is only available with a white flange).



Comfort clear diffuse (CD) finish: Slightly diffuse clear finish, that eliminates iridescence and reduces the mirror image effect inherent with specular finishes.



Black (BK) finish: Matte finish that provides lowest aperture brightness possible and significantly reduces source identification in a ceiling (anodized).

Flange Finishes



White (-): Provides the smoothest transition to ceilings when off (matte).

Polished (P): Produces a continuous look throughout the reflector (aperture matching).

Components

Building a modular luminaire



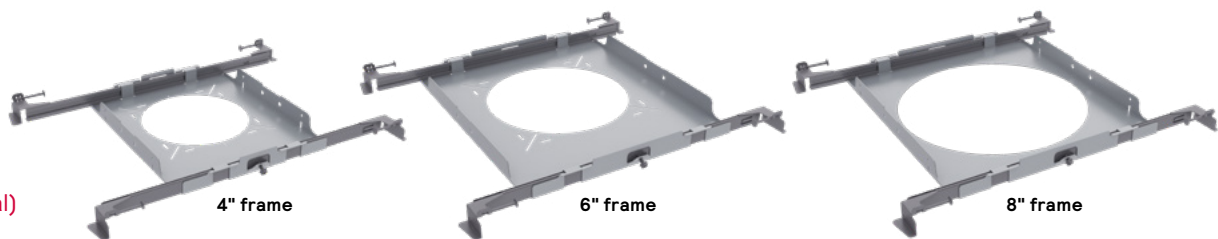
Modular by design

- 5 CCT selectable options
- Multiple Lumen selectable options
- Air-tight construction
- IC rated (4"-1500lm, 6"/8"-2000lm)
- Wet listed (for use w/ covered ceilings)

Options & Accessories

Round Downlight & Lensed Wall Wash

Frames (optional)



EM options



Light engine



Reflector



Optics



Beams



© 2024 Signify Holding. All rights reserved. The information provided herein is subject to change, without notice. Signify does not give any representation or warranty as to the accuracy or completeness of the information included herein and shall not be liable for any action in reliance thereon. The information presented in this document is not intended as any commercial offer and does not form part of any quotation or contract, unless otherwise agreed by Signify.

PLI-2406BR-ModuLyte-brochure-en 07/24



Signify North America Corp.
400 Crossing Blvd, Suite 600
Bridgewater, NJ 08807
Telephone: 800-555-0050

Signify Canada Ltd.
281 Hillmount Road,
Markham, ON, Canada L6C 2S3
Telephone: 800-668-9008

All trademarks are owned by Signify Holding or their respective owners.

www.lightolier.com