



Motion sensor without
daylight sensor



Motion sensor with daylight sensor

Specification Sheet

OCC0100A/02 BP Sensor WH / OCC0101A/02 DL BP Sensor WH

The Signify wireless motion sensor and multi sensor, which are Interact Ready, make it easy to upgrade to a smart lighting system. It is a battery powered sensor which uses 2.4 GHz Zigbee technology to enable reliable and secure communication with the lights in your space.

It triggers automatic responses to turn on, or dim the lights according to occupancy detection and daylight variation.

The sensor is designed for office, school, education, healthcare and retail related indoor applications.

OCC0100A/02 BP Sensor WH - Motion Sensor without Daylight Sensor, OCC0101A/02 DL BP Sensor WH - Motion Sensor with Daylight Sensor

Product Features

Occupancy Detection

- Passive Infrared (PIR) technology to detect occupancy accurately
- Adjustable sensitivity.
- Minimum false trigger

Daylight Dependent Regulation (DDR)

- High accuracy of ambient light measurement from approximately 1 to 5 000 lux at floor level
- Closed loop DDR
- Fast report for calibration

Installation

- Battery-powered, no mains wire required
- Quick and easy mounting with double-sided tape or screws
- Walk test mode available for optimal detection
- Indoor use only

Environment

- ROHS/REACH compliant
- No mercury
- Low carbon footprint

Connectivity

- 2.4 GHz mesh networking technology
- Reliable and secure wireless communication, nominal range 15 m
- Easy commissioning

Control Functionality

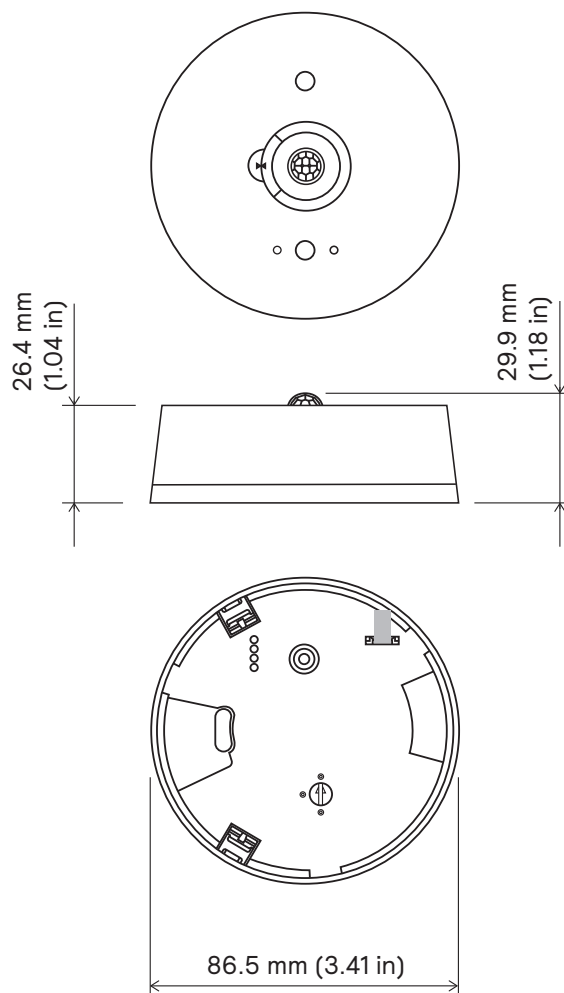
- Automatic light control based on occupancy detection and DDR
- Adjustable sensor parameters for personalized lighting behaviors

Reliability

- Reliable operation between -5°C and $+45^{\circ}\text{C}$ ambient temperature.*
- Battery life > 8 years. Minimum maintenance.
- MTBFP (Mean Time Before False Positive motion sensor) > 500 hours at high sensitivity

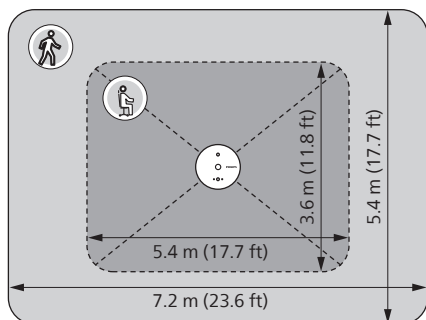
* As PIR based sensing works on the difference between subject's temperature and ambient temperature, the occupancy detection could vary due to clothing and size of the subject. The sensor detection area will decrease when the difference in subject's temperature and ambient temperature is approximately 5°C or less.

Dimensional drawings

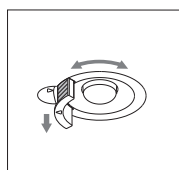
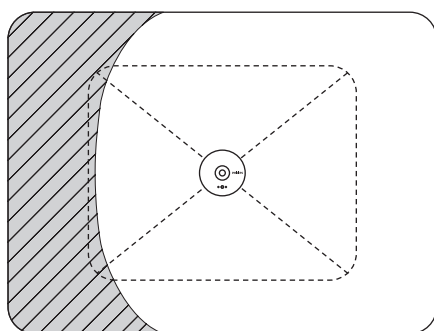
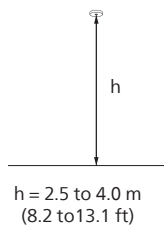


Field-of-View

Field-of-View motion



At $h = 2.5 \text{ m}$ (8.2 ft)



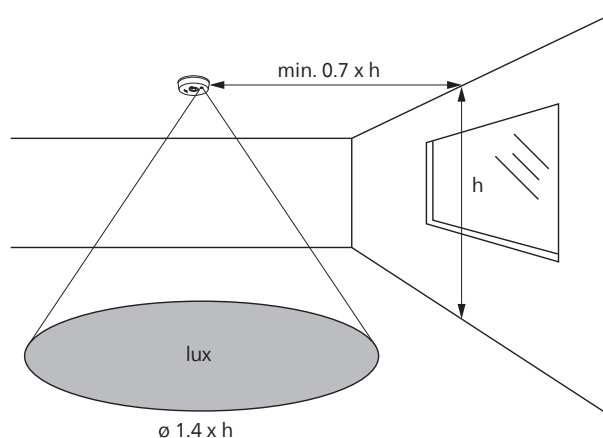
Use the plastic shield on top of the lens to reduce the motion field of view.

Field-of-View daylight

Only applicable for the OCC0101A/02 DL BP Sensor WH. The light sensor measures the total amount of light in a circular field of the thermopile detection area. The following aspects must be observed during installation:

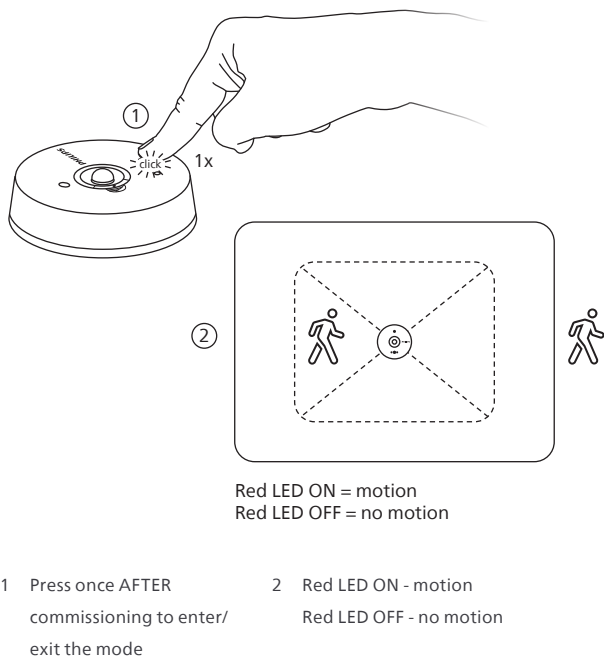
- Minimum distance from the window $\geq 0.6 \text{ m}$ ($\geq 2 \text{ ft}$).
- Prevent light reflections from outside entering the sensor (for example sunlight reflection on a car) as this leads to incorrect light regulation.

As a guideline, the formula $0.7 \times h$ can be used to calculate the minimum distance between the window and sensor whereby h is the height from the windowsill to the ceiling.



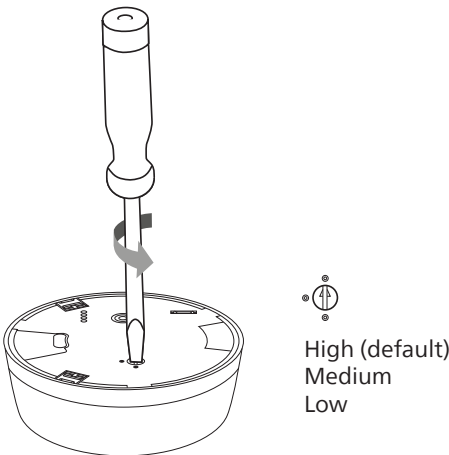
Walk test

A walk test helps to determine the optimal location to place the sensor by quickly testing the occupancy detection coverage. This is ONLY possible after sensor has been commissioned.



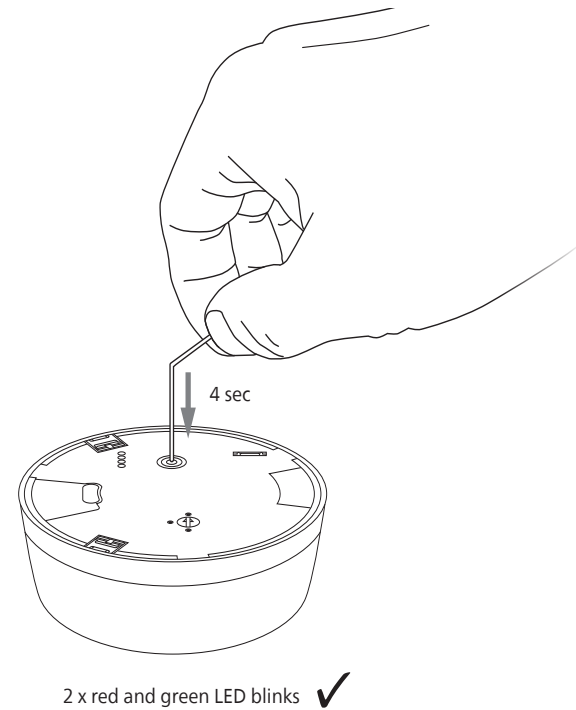
Sensitivity

If needed, the sensitivity for motion detection can be adjusted with the dial at the back. Three sensitivity levels are available from Low, Medium to High (High as default).



Factory reset

Performing a factory reset restores the sensor to the un-commissioned status. The sensor is removed from the current network (if any). To remove the device from a certain system, it is sometimes also required to delete it from the app. See the Commissioning Guide when necessary. The sensor automatically enters the commissioning mode after a factory reset.



LED indicator

LED pattern	
Green LED blinks every 10 s	Ready for commissioning
Green LED blinks every 2 s	Commissioning in progress
Green LED flash 2 x	Commissioning successful
Red LED flash 2 x	Commissioning failure
Green and Red LEDs flash 2 x	Successful factory reset
Red LED flash 1 x	Motion detected in walk test mode
Green LED flash 6 x	Occupancy detected
Red LED flash 3 x	Occupancy detected and battery low

Specifications

<

Ordering Data

Type	Region of sale	MOQ	Ordering number
OCC0100A/02 BP Sensor WH	Global (except North America)	1	9137 010 67003
OCC0100A/02 BP Sensor WH	North America	1	9137 010 67013
OCC0101A/02 DL BP Sensor WH	Global (except North America)	1	9137 010 67103
OCC0101A/02 DL BP Sensor WH	North America	1	9137 010 67113

© 2025 Signify Holding. All rights reserved. The information provided herein is subject to change, without notice. Signify does not give any representation or warranty as to the accuracy or completeness of the information included herein and shall not be liable for any action in reliance thereon. The information presented in this document is not intended as any commercial offer and does not form part of any quotation or contract, unless otherwise agreed by Signify.

All trademarks are owned by Signify Holding or their respective owners.

