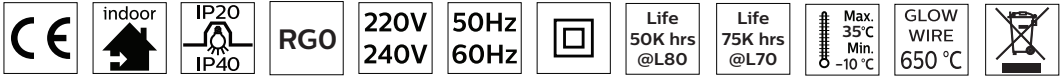
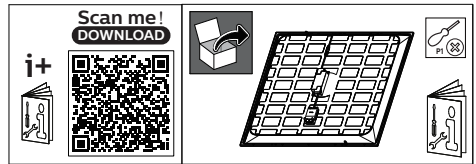

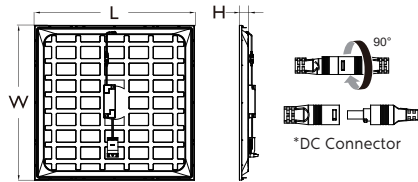


## Ledinaire Panel RC065B/RC066B



	IP	IK	L×W×H1 (mm)	
RC065B G5 345/840 PSU W60L60 OC SC	IP40/IP20	IK02	595x595x35	1.65
RC065B G5 345/840 PSU W60L60 NOC SC	IP40/IP20	IK02	595x595x34	1.35
RC065B G5 345/840 PSD W60L60 OC SC	IP40/IP20	IK02	595x595x35	1.65
RC066B 345/840 PSU W62L62 OC	IP40/IP20	IK02	620x620x35	1.75
RC066B 345/840 PSD W62L62 OC	IP40/IP20	IK02	620x620x35	1.75
RC065B G5 345/840 PSU W60L60 OC 6PK SC	IP40/IP20	IK02	595x595x35	1.65
RC066B 34_365/830_40 PSU W62L62 OC	IP40/IP20	IK02	620x620x35	1.75
RC065B G5 34_365/830_40 PSU W60L60 OC SC	IP40/IP20	IK02	595x595x35	1.65
RC065B G5 34_365/830_40 PSU 60x60 NOC SC	IP40/IP20	IK02	595x595x34	1.35
RC065B G5 34_365/830_40 PSD W60L60 OC SC	IP40/IP20	IK02	595x595x35	1.65
RC065B G5 34_365/830_40 PSU 30x120 OC SC	IP40/IP20	IK02	295x1195x35	1.75
RC065B G5 34_365/830_40 PSD 60x60 NOC SC	IP40/IP20	IK02	595x595x35	1.35

Energy efficiency class of light source  
D



\* RC065B with DC connector,  
RC066B without DC connector



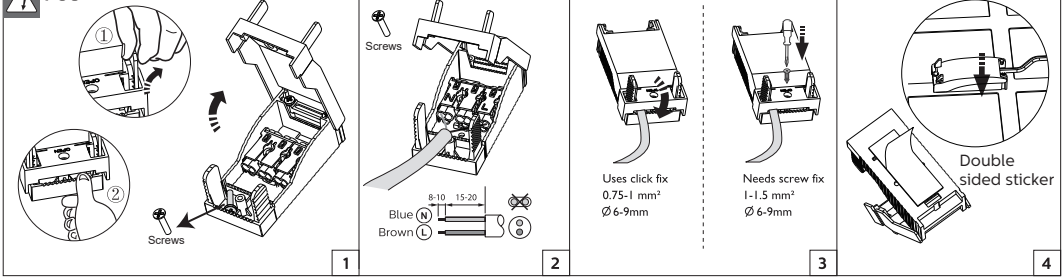
Available as accessory (Need to purchase separately)

<p>Suspension set: 911401809487: RC159Z Suspension set SME-3 WH 911401809387: RC159Z Suspension set SME-4 WH</p>	<p>Plaster set: 911401809287: RC159Z Plaster Ceiling SMB-PLC</p>	<p>Safety cable: 911401809187: RC159Z Safety Cable</p>
--	--	--

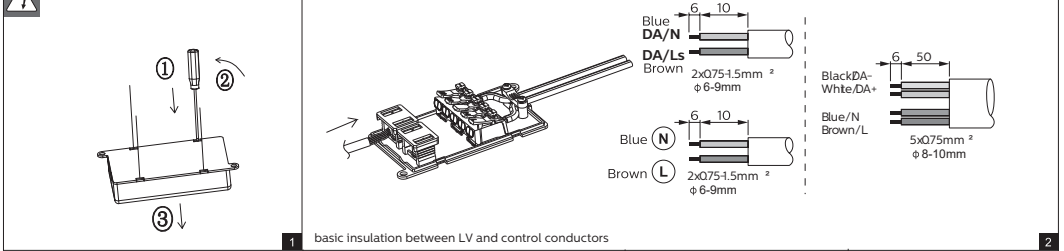
<p>Surface mounted set: 911401808087:RC059Z SMB W60L60 911401808187:RC059Z SMB W62L62 911401808287:RC059Z SMB W30L120</p>	<p>Surface mounted set: 911401807787:RC159Z SMB W60L60 911401807887:RC159Z SMB W62L62 911401807987:RC159Z SMB W30L120</p>
---	---

## Power Connection

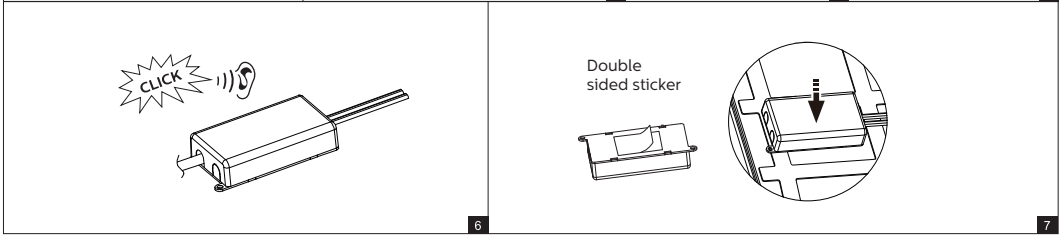
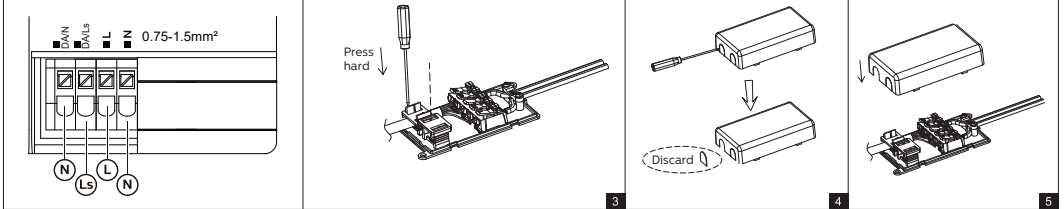
### PSU



### PSD

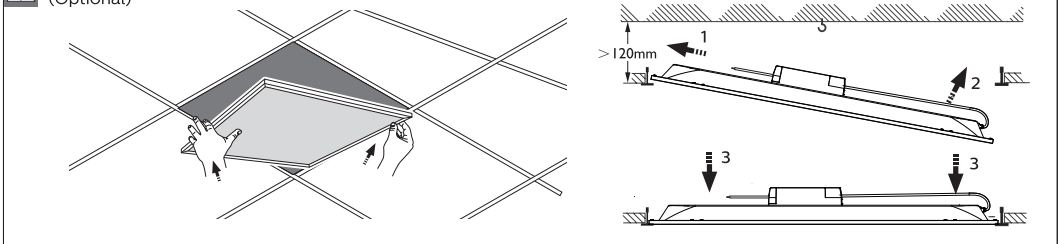


### PSD Touch & Dim

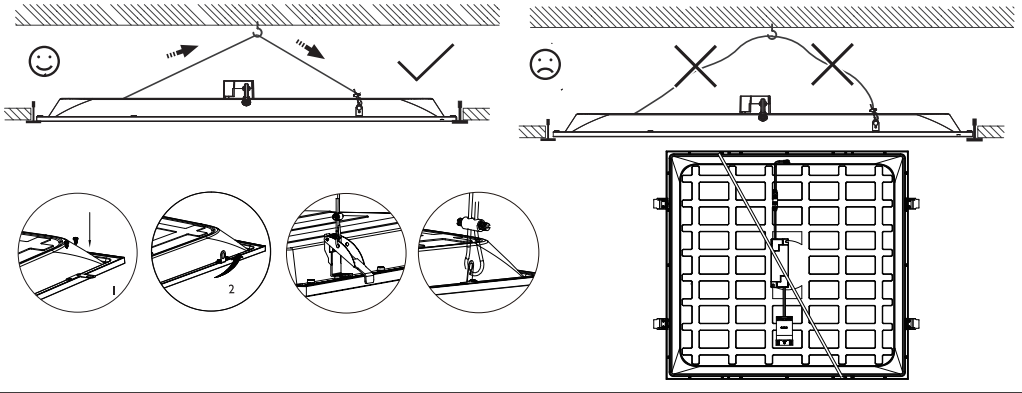


## A Visible Profile Ceiling mounting(VPC) - Lay-In mounting

Install safety cable (Optional)

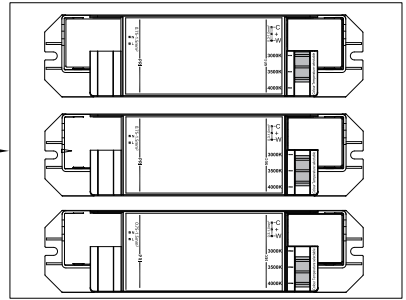
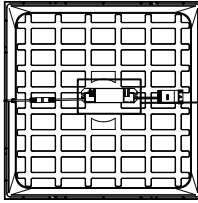


## D Safety cable (SC)

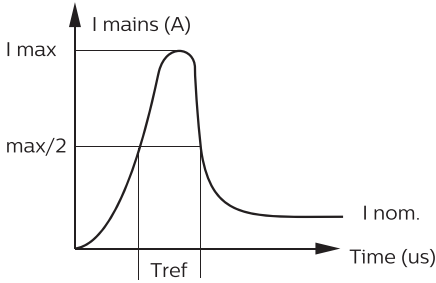


All-in: Multi Color switch set your color temperature  
3000K, 3500K or 4000K (=default)

Colour Temperature selectable			
Drive	3000K	3500K/4000K	Wattage
PSU	3400lm	3600lm	30W
PSD	3400lm	3600lm	28W



## Inrush current



	28W PSU	28W PSD	30W
Electrical characteristics			
I <sub>max</sub> (A)	18.7	25.8	22
T <sub>ref</sub> (μs)	218	255	250
MCB	Luminaires Max.		
B-10 A	13	9	6
B-13 A	18	13	8
B-16 A	23	17	10
C-10 A	24	17	10
C-13 A	32	23	13
C-16 A	39	28	17