

# FlexCove G6/IP65 LED柔性灯带

Mounting instruction/ 安装说明



Type 型号	Lm/M(Typical) 流明/米	Power/5M 功率/5米	Ra 显指	Input Voltage 输入电压	CCT 色温	
LS170S LED4 S 927 IP65 L5000 PRO G2	357	21	90	24VDC	2700	
LS170S LED4 S 930 IP65 L5000 PRO G2	376	21	90	24VDC	3000	
LS170S LED4 S 940 IP65 L5000 PRO G2	395	21	90	24VDC	4000	
LS170S LED4 S 965 IP65 L5000 PRO G2	395	21	90	24VDC	6500	
LS170S LED8 S 927 IP65 L5000 PRO G2	714	35	90	24VDC	2700	
LS170S LED8 S 930 IP65 L5000 PRO G2	752	35	90	24VDC	3000	
LS170S LED8 S 940 IP65 L5000 PRO G2	790	35	90	24VDC	4000	
LS170S LED8 S 965 IP65 L5000 PRO G2	790	35	90	24VDC	6500	
LS170S LED12 927 IP65 L5000 PRO G2	1070	49	90	24VDC	2700	
LS170S LED12 930 IP65 L5000 PRO G2	1130	49	90	24VDC	3000	
LS170S LED12 940 IP65 L5000 PRO G2	1180	49	90	24VDC	4000	
LS170S LED12 965 IP65 L5000 PRO G2	1180	49	90	24VDC	6500	
LS170S LED16 927 IP65 L5000 PRO G2	1430	63	90	24VDC	2700	
LS170S LED16 930 IP65 L5000 PRO G2	1500	63	90	24VDC	3000	
LS170S LED16 940 IP65 L5000 PRO G2	1580	63	90	24VDC	4000	
LS170S LED16 965 IP65 L5000 PRO G2	1580	63	90	24VDC	6500	
LS170S LED24 927 IP65 L5000 PRO G2	2140	98	90	24VDC	2700	
LS170S LED24 930 IP65 L5000 PRO G2	2260	98	90	24VDC	3000	
LS170S LED24 940 IP65 L5000 PRO G2	2370	98	90	24VDC	4000	
LS170S LED24 965 IP65 L5000 PRO G2	2370	98	90	24VDC	6500	
LS170S LED30 927 IP65 L5000 PRO G2	2680	112	90	24VDC	2700	
LS170S LED30 930 IP65 L5000 PRO G2	2820	112	90	24VDC	3000	
LS170S LED30 940 IP65 L5000 PRO G2	2960	112	90	24VDC	4000	
LS170S LED30 965 IP65 L5000 PRO G2	2960	112	90	24VDC	6500	
LS170S LED10 TNW IP65 L5000 PRO G2	C	1050	35	90	24VDC	6500
	W	950	35			2700
LS170S LED8 TNW IP65 L5000 PRO G2	C	850	30	90	24VDC	6500
	W	700	30			2700
LS170S LED8 RGBW IP65 L5000 PRO G2	R	100	17.5	90	24VDC	N/A
	G	280	17.5			N/A
	B	50	17.5			N/A
	W	850	35			3000

- Optional Accessories 可选配件:
- AC170Z connector with leader WP PRO  
12NC:9114 015 95146  
The appearance is shown in Figure D  
外观如D所示
  - AC170Z I-type connector WP PRO  
12NC:9114 015 95346  
The appearance is shown in Figure E  
外观如E所示
  - AC170Z T-type connector WP PRO  
12NC:9114 015 95646  
The appearance is shown in Figure F  
外观如F所示
  - AC170Z L-type connector WP PRO  
12NC:9114 015 86447  
The appearance is shown in Figure G  
外观如G所示
  - AC170Z End cap WP PRO  
12NC:9114 015 95746  
The appearance is shown in Figure H  
外观如H所示



The power of the light strip connected to the accessories should not exceed 120W.  
配件所接灯带功率不可超过120W

## Recommended power supply model 推荐电源型号

Dimming	12NC	Description	Power range	Current range
PSU	9290 034 63302	Xi LED Transformer 30W 24VDC G2	1.5...30W	0.375...1.25A
	9290 034 63402	Xi LED Transformer 60W 24VDC G2	3...60W	0.75...2.5A
	9290 038 76402	Xi LED Transformer 150W 24VDC G2	7.5...150W	2.5...6.25A
Economic PSU	9290 038 81601	Economic LED Transformer 60W 24VDC G3	3...60W	0.125...2.5A
	9290 038 81701	Economic LED Transformer 120W 24VDC G3	6...120W	0.25...5A
	9290 038 81901	Economic LED Transformer 250W 24VDC G3	12.5...250W	0.521...10.42A
PSD	9290 039 19680	Xi LED Transformer 30W TD 24VDC G2	12...30W	0.5...1.25A
	9290 039 19780	Xi LED Transformer 60W TD 24VDC G2	24...60W	1...2.5A
	9290 039 19980	Xi LED Transformer 200W TD 24VDC G2	60...200W	2.5...8.333A
1-10V	9290 028 25906	Xi LED Transformer 60W 1-10V 24VDC	3...60W	1.25...2.5A
	9290 028 26006	Xi LED Transformer 100W 1-10V 24VDC	5...100W	2.08...4.16A
	9290 028 26106	Xi LED Transformer 150W 1-10V 24VDC	7.5...130W	3.125...5.41A
	9290 021 05680	LED Transformer 40W 24VDC 120-277V	40W	0.5...1.67A
120-277V	9290 021 05880	LED Transformer 100W 24VDC 120-277V	96W	2.5...4A

RGBW以及双色温灯带推荐驱动请参考本产品Service Manual.

Recommended driver list for RGBW and Tunable White strips please refer Service Manual.

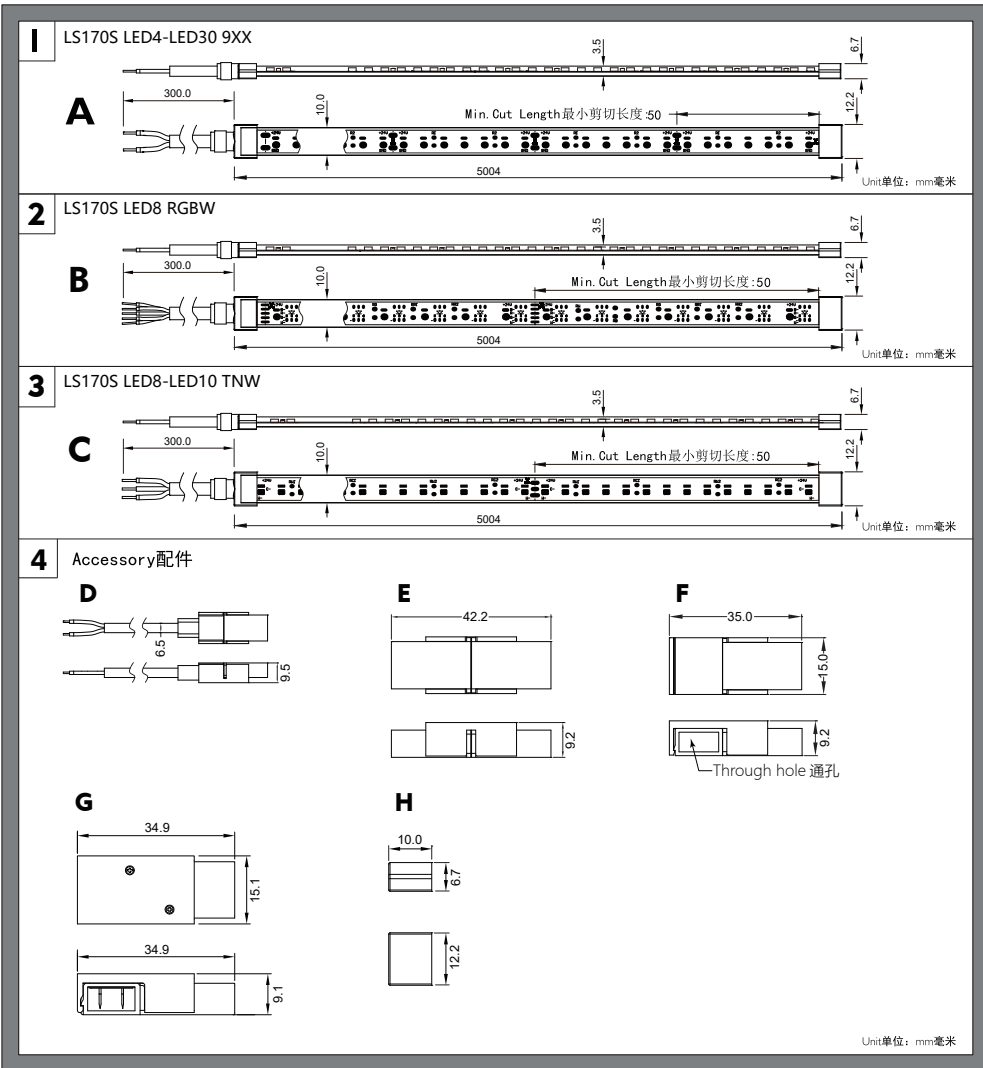
Signify Luminaires (Shanghai) Co., Ltd.  
Address: 2F, Building 1, No. 2555 Hechuan Road, Minhang District, Shanghai  
Postalcode: 200233

昕诺飞灯具(上海)有限公司  
地址: 上海市闵行区合川路2555号1幢二楼  
邮编: 200233

# PHILIPS

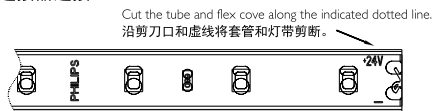
Philips and the Philips shield emblem are registered trademarks of Koninklijke Philips N.V.

# Product appearance 产品外观



# Usage of accessories 配件使用方法

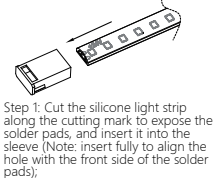
**I** The attentions after the LED flexcover is cut on site. 灯带剪断后，剪开端处理方式：  
Use the connectors 使用连接器连接



Note: the electrical components shall not be damaged when cutting the cove and removing the outer silicone tube. The product will not be IP65 after cutting on site.  
注意：去除外层硅胶保护套，不得伤及灯带电器元件。IP65灯带剪断后连接处不能保证IP65，仅作IP20使用。

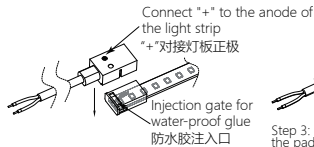
## 2.a

### To use AC170Z connector with leader cable WP PRO (12NC:9114 015 95146) 灯带配件AC170Z-WP带线连接器的使用方法



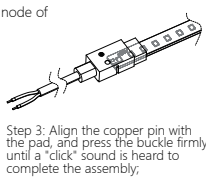
Step 1: Cut the silicone light strip along the cutting mark to expose the solder pads, and insert it into the sleeve (Note: insert fully to align the hole with the front side of the solder pads);

第一步：将硅胶灯带沿切割线剪开焊盘，装入套筒（注意装到底，铜针孔对准焊盘正面）



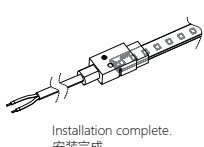
Step 2: Insert the light strip into the wiring slot (align the wire '+' marking and the light strip '+24V' solder pad with the same pin);

第二步：将灯带装入接线槽内（导线 '+' 标识与灯带 '+24V' 焊盘对准同一个引脚）



Step 3: Align the copper pin with the pad, and press the buckle firmly until a 'click' sound is heard to complete the assembly;

第三步：铜针对准焊盘，用力压紧卡扣，听到咔嚓声后装配完成



Installation complete.  
安装完成

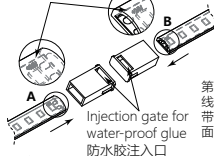


Note: The positive and negative poles of the wire shall correspond to the positive and negative poles of the lamp strip.  
注意：线材正负极需对应灯带正负极。

## 2.b

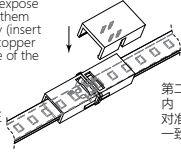
### To use AC170Z I-type connector WP PRO (12NC:9114 015 95346) 灯带配件AC170Z-WP连接器的使用方法

Align the same polarity to one side;  
同一极性对齐一边



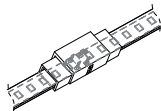
Step 1: Cut 2 silicone light strips along the cutting marks to expose the solder pads, and insert them into the sleeves respectively (insert the strips fully to align the copper pin holes with the front side of the solder pads);

第一步：将2条硅胶灯带沿切割线剪开焊盘，分别装入套筒（灯带装到底，铜针孔对准灯板焊盘正面）



Step 2: Insert the light strips into the wiring slot (Note: align the '+24V' pads on both ends with the same pin to ensure consistent polarity);

第二步：将灯带装入接线槽内（注意两端灯带 '+24V' 对准同一个引脚，保证极性一致）



Step 3: Align the copper pin with the pad, and press the buckle firmly until a 'click' sound is heard to complete the assembly;

第三步：铜针对准焊盘，用力压紧卡扣，听到咔嚓声后装配完成

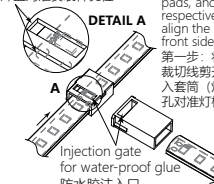


Note: The positive and negative poles of two butt lamp strips shall be the same.  
注意：两条对接的灯带正负极需相同。

## 2.c

### To use AC170Z T-type connector WP PRO (12NC:9114 015 95646) 灯带配件AC170Z-WP带线连接器的使用方法

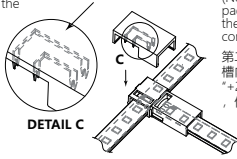
Align the solder pads with the mounting holes;  
焊盘对准安装件孔位



Step 1: Cut 2 silicone light strips along the cutting marks to expose the solder pads, and insert them into the sleeves respectively (insert the strips fully to align the copper pin holes with the front side of the solder pads);

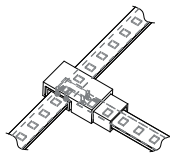
第一步：将2条硅胶灯带沿切割线剪开焊盘，分别装入套筒（灯带装到底，铜针孔对准灯板焊盘正面）

The same pin must align with the same polarity on both light strips.  
同一个引脚对准两个灯板的同一种极性



Step 2: Insert the light strips into the wiring slot (Note: align the '+24V' pads on both ends with the same pin to ensure consistent polarity);

第二步：将灯带装入接线槽内（注意两端灯带 '+24V' 对准同一个引脚，保证极性一致）



Step 3: Align the copper pin with the pad, and press the buckle firmly until a 'click' sound is heard to complete the assembly;

第三步：铜针对准焊盘，用力压紧卡扣，听到咔嚓声后装配完成



Note: The positive and negative poles of the wire shall correspond to the positive and negative poles of the lamp strip.  
注意：线材正负极需对应灯带正负极。

## 2.d

### To use AC170Z L-type connector WP PRO (12NC:9114 015 86447) 灯带配件AC170Z-WP带线连接器的使用方法

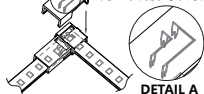
Injection gate for water-proof glue  
防水胶注入口



Step 1: Cut 2 silicone light strips along the cutting marks to expose the solder pads, and insert them into the sleeves respectively (insert the strips fully to align the copper pin holes with the front side of the solder pads);

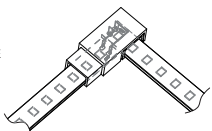
第一步：将2条硅胶灯带沿切割线剪开焊盘，分别装入套筒（灯带装到底，铜针孔对准灯板焊盘正面）

The same pin must align with the same polarity on both light strips.  
同一个引脚对准两个灯板的同一种极性



Step 2: Insert the light strips into the wiring slot (Note: align the '+24V' pads on both ends with the same pin to ensure consistent polarity);

第二步：将灯带装入接线槽内（注意两端灯带 '+24V' 对准同一个引脚，保证极性一致）



Step 3: Align the copper pin with the pad, and press the buckle firmly until a 'click' sound is heard to complete the assembly;

第三步：铜针对准焊盘，用力压紧卡扣，听到咔嚓声后装配完成



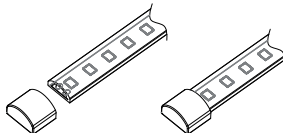
Note: The positive and negative poles of the wire shall correspond to the positive and negative poles of the lamp strip.  
注意：线材正负极需对应灯带正负极。

## 2.e

### To use AC170Z End cap WP PRO (12NC:9114 015 95746) 灯带配件AC170Z-PRO连接器的使用方法

Neutral silicon glue is required for the sealing between end cap and FlexCove. 裁剪后安装端盖，请在灯带与端盖结合处涂覆中性密封胶，以达到密封效果。

Note: For sealing, mono-component neutral silicon glue is required. To be provided by end user/customer.  
注意：胶水采用单组份中性密封胶（不含硫化物，卤化物）。物料不提供。

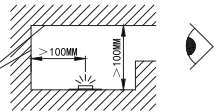


3

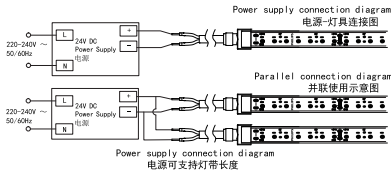
This product is only used for indirect lighting. To achieve optimized lighting effect, the distance between the product and the visible illuminated surface should be greater than 100mm.

本产品仅供间接照明使用，为获得最佳混光效果，灯带距可见被照射面距离应大于100CM

Visible illuminated surfaces  
可见被照射面



4



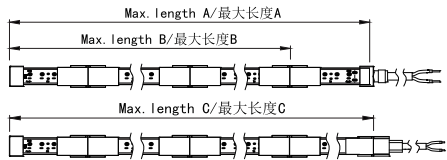
型号/TYP E	Max product lengths the 60W power supply supports 60W电源可支持灯带长度	Max product lengths the 100W power supply supports 100W电源可支持灯带长度	Max product lengths the 150W power supply supports 150W电源可支持灯带长度
LS1705 LED4 9xw	10M(米)	30M(米)	45M(米)
LS1705 LED8 9xw	8M(米)	14M(米)	21M(米)
LS1705 LED12 9xw	5M(米)	9M(米)	13M(米)
LS1705 LED16 9xw	4M(米)	6M(米)	10M(米)
LS1705 LED24 9xw	2M(米)	4M(米)	6M(米)
LS1705 LED30 9xw	2M(米)	3M(米)	5M(米)
LS1705 LED12 8xw	6M(米)	11M(米)	17M(米)
LS1705 LED24 8xw	3M(米)	5M(米)	8M(米)
LS1705 LED30 8xw	2M(米)	4M(米)	6M(米)
LS1705 LED8 T1W	7M(米)	12M(米)	18M(米)
LS1705 LED10 T1W	6M(米)	10M(米)	15M(米)
LS1705 LED8 RGBW	7M(米)	11M(米)	17M(米)

Note: The power supply and other connection cables need to be purchased by the customers separately. The diameter of the cable must be  $\geq 0.75mm^2$ .

注意：电源及其它连接线由客户自行购买；电线线径至少为0.75mm<sup>2</sup>。

5

Max connection length/灯带连接长度控制



型号/TYP E	最大长度A/Max length A	最大长度B/Max length B	最大长度C/Max length C
LS1705 LED4 9xw	10M(米)	10M(米)	10M(米)
LS1705 LED8 9xw	5M(米)	5M(米)	5M(米)
LS1705 LED12 9xw	5M(米)	5M(米)	5M(米)
LS1705 LED16 9xw	5M(米)	5M(米)	5M(米)
LS1705 LED24 9xw	5M(米)	5M(米)	5M(米)
LS1705 LED30 9xw	5M(米)	5M(米)	5M(米)
LS1705 LED12 8xw	5M(米)	5M(米)	5M(米)
LS1705 LED24 8xw	5M(米)	5M(米)	5M(米)
LS1705 LED30 8xw	5M(米)	5M(米)	5M(米)
LS1705 LED8 T1W	5M(米)	5M(米)	5M(米)
LS1705 LED10 T1W	5M(米)	5M(米)	5M(米)
LS1705 LED8 RGBW	5M(米)	5M(米)	5M(米)

Please read this manual carefully before using the product

使用前本产品前，请先仔细阅读读本手册

- The manufacturer will not be held responsible for improper usage or modifications of the product.
- 所有不当使用或自行更改产品结构而导致损坏，生产商不承担任何责任。
- Recommended to use Philips power supply (This product must use SELV (isolated) power supply). The power supply must comply with independent driver requirements of IEC61347-2-13/GB19510.14.
- 推荐同飞利浦电源驱动器配套使用（产品必须和SELV隔离电源一起使用）。电源驱动器必须符合IEC61347-2-13/GB19510.14的独立式要求。
- This product must use Philips connectors.
- 此产品必须使用飞利浦连接器。
- Do not stare at the product when the lights is on.
- 灯具在使用时请不要直视光源。
- The light source of this product is not replaceable; when the light source reaches its end of life the whole luminaire shall be replaced.
- 灯具的光源不可单独替代，当光源寿终时，整个灯具需要被替换掉。
- Please take static proof measures when installing and maintaining the product.
- 安装和维护灯具时，请做好防静电措施。
- In case of operation failure, please switch off the power and contact your near-est dealer.
- 如发现异常或操作有任何问题，请务必先切断电源，然后与经销商联系。

Maintenance 保养方法：

- In order to ensure optimum performance, please clean the product regularly(recommended once a year). When cleaning the product, please use soft dry cotton cloth only.
- 为了保持灯带明亮效果，请定期（一年一次）时行清洁。灯带不洁处需擦拭时请用柔软干燥的布料擦拭。

- Don't use chemical solvents to clean the product.

请不要用香蕉水等挥发性物质擦拭灯带表面，请不要对灯具喷洒任何化学药剂，否则灯具可能会变色或损坏。

Attention 注意：

- Please switch off the power supply before mounting and maintaining this product.
- 安装和维护灯带时，请务必先关闭电源！
- The lighting strip shall be installed by a qualified electrician and wired in accordance with the latest IEE regulations or the national regulations.
- 灯带应由有资格的电工安装，接线符合IEE电气标准或国家标准。
- The product shall not be covered with thermal insulation or similar material under any circumstances.
- 灯带不允许被隔热或类似材料覆盖。
- The product should not be used in directly exposed environment containing hazardous substances to silicone rubber. Consult your local dealer for use in any special applications.
- 灯带不得用于直接暴露在硅胶有害的环境中。如用于特定场合请咨询当地经销商。
- The corrosive atmosphere or hazardous materials such as sulfur, chlorine, phthalate, etc must be avoided during the use and storage.
- 灯具避免在腐蚀性环境或者含有有害物质，例如硫化物，卤化物，邻苯二甲酸酯等环境中存储和使用。
- The external flexible cable or cord of this product cannot be replaced; if the cord is damaged, the product shall be destroyed.
- 不能替换此灯具的外部柔性电线或电缆，如果电缆损坏，整个灯具需要处理掉。
- Do not turn the lamp belt on.
- 请勿将灯带盘起点亮。

有害物质清单/Harmful Substance Form



This marking indicates that this product should not be disposed with other household wastes throughout the EU. To prevent possible harm to the environment or human health from uncontrolled waste disposal, recycle it responsibly to promote the sustainable reuse of material resources. To return your used device, please use the return and collection systems or contact the retailer where the product was purchased. They can take this product for environmental safe recycling.

物料名称	产品中有害物质的名称及含量信息										
	Pb	Hg	Cd	Cu	Cr(VI)	Pb/Bz	Phthal	DEHP	DBP	BSP	DEHP
塑料外壳/塑料件	X	0	0	0	0	0	0	0	0	0	0
散热器/散热片	X	0	0	0	0	0	0	0	0	0	0

注1：0 表示该有害物质在原料和产品的所有材料中的含量均不超过欧盟电子产品有害物质限制使用标准的要求。  
X 表示该有害物质至少在其部件的任一材料中含量超出欧盟电子产品有害物质限制使用标准的要求。  
注2：以上表格中的物料，是指该有害物质含量超出欧盟电子产品有害物质限制使用标准要求的。