



# Architectural Lighting DMX Controls and Wiring Accessories

## Uni DMX controls and accessories

The ZXP399 DMX Controls and Wiring Accessories are to be used with our architectural and facade lighting luminaires (UniFlood C, M and G, UniStrip G4, UniEdge, UniDot G2, UniString and UniBar). DMX Controls include main controller, stand-alone controller, sub-controllers, DMX amplifier and DMX addressing device. Main Controller: Industrial computer that can control up to 6000 DMX universes. Stand-alone Controller: Fits for medium applications with up to 700 DMX universes. Wiring accessories include leader and jumper cables with male and female IP67 connectors and end-caps. Addressing Device: Hand-held device that can write DMX addresses to a whole run on-site within minutes. DMX Amplifier: Compact, IP65 and low power repeater that can amplify the DMX signal for up 100 meters.

### Application

- Bridges, Monuments, Facades
- Landscape
- Parks and Plazas

# Uni DMX controls and accessories

## Versions



ZXP399 Endcap F



sub-controller 16P DMX



sub-controller 8P DMX



ZXP399 Endcap M



standalone controller



DMX Amplifier



ZXP399 Y Connector



Addressing Kit

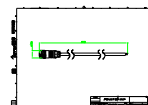


DMX Amplifier



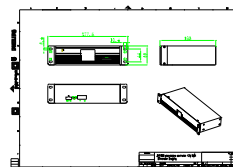
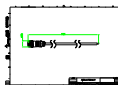
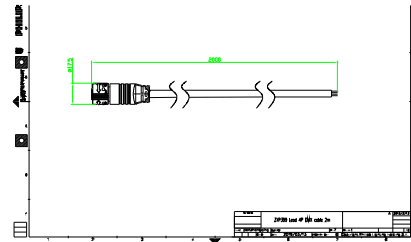
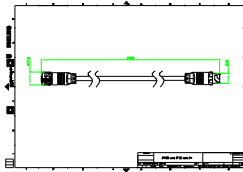
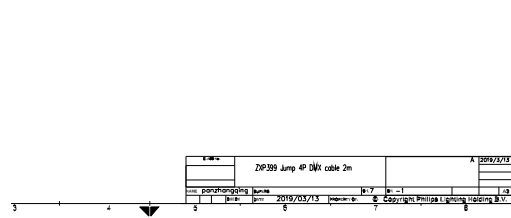
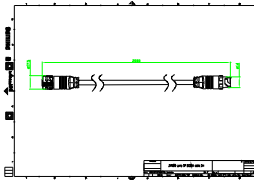
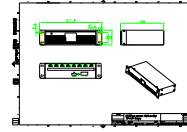
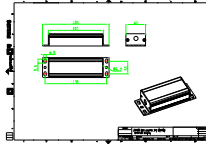
DMX Amplifier

## Dimensional drawing



# Uni DMX controls and accessories

## Dimensional drawing



# Uni DMX controls and accessories

## Dimensional drawing



## Product details

DMX sub-controller



DMX sub-controller



DMX stand-alone controller



DMX sub-controller



DMX sub-controller



DMX sub-controller



DMX sub-controller



DMX stand-alone controller

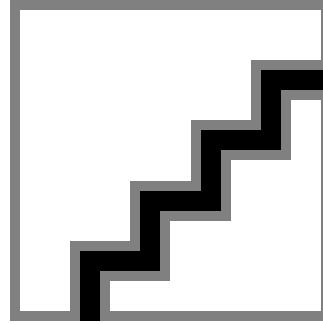


# Uni DMX controls and accessories

## Product details



DMX addressing kit



DMX addressing kit



DMX sub-controller



DMX addressing kit



DMX stand-alone controller



DMX stand-alone controller



DMX stand-alone controller

