



Architectural Lighting DMX Controls and Wiring Accessories

Uni DMX controls and accessories

The ZXP399 DMX Controls and Wiring Accessories are to be used with our architectural and facade lighting luminaires (UniFlood C, M and G, UniStrip G4, UniEdge, UniDot G2, UniString and UniBar). DMX Controls include main controller, stand-alone controller, sub-controllers, DMX amplifier and DMX addressing device. Main Controller: Industrial computer that can control up to 6000 DMX universes. Stand-alone Controller: Fits for medium applications with up to 700 DMX universes. Wiring accessories include leader and jumper cables with male and female IP67 connectors and end-caps. Addressing Device: Hand-held device that can write DMX addresses to a whole run on-site within minutes. DMX Amplifier: Compact, IP65 and low power repeater that can amplify the DMX signal for up 100 meters.

Application

- Bridges, Monuments, Facades
- Landscape
- Parks and Plazas

Uni DMX controls and accessories

Versions



ZXP399 Endcap F



sub-controller 16P DMX



ZXP399 4P Jumper Cable



sub-controller 8P DMX



ZXP399 4P Leader Cable



ZXP399 Endcap M



standalone controller



DMX Amplifier



ZXP399 Y Connector



Addressing Kit



DMX Amplifier



DMX Amplifier



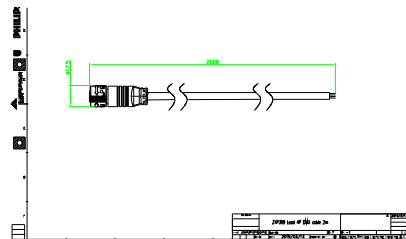
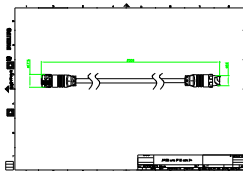
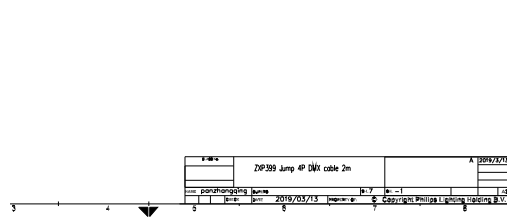
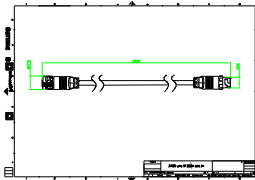
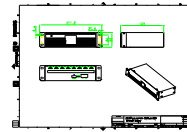
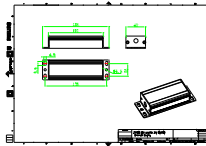
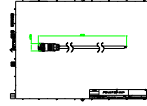
ZXP399 Jumper DMX connector



DMX Amplifier

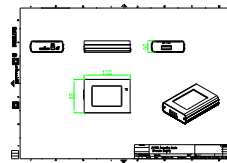
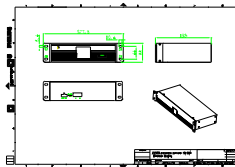
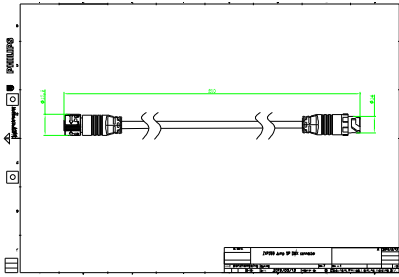
Uni DMX controls and accessories

Dimensional drawing



Uni DMX controls and accessories

Dimensional drawing



Product details

DMX sub-controller



DMX sub-controller



Uni DMX controls and accessories

Product details

DMX stand-alone controller



DMX sub-controller



DMX sub-controller



DMX sub-controller



DMX sub-controller



DMX stand-alone controller



DMX addressing kit



DMX addressing kit



DMX sub-controller



DMX addressing kit



DMX stand-alone controller



DMX stand-alone controller



Uni DMX controls and accessories

Product details

DMX stand-alone controller

