



CoreLine Wall-mounted – the clear choice for LED

CoreLine Wall-mounted

CoreLine Wall-mounted is a circular-shaped surface-mounted luminaire that is easy to apply in circulation areas such as hallways and staircases. The modern unobtrusive design, in combination with its homogeneous light distribution it delivers, ensures that this luminaire blends into most building architectures. With the push-in connectors, installation is fast and straightforward

Benefits

- Universal solution covering various application requirements
- Slim and unobtrusive design
- Delivering the right visual comfort in common areas
- Direct replacement for traditional wall-mounted luminaires

Features

- Homogeneous light effect to cater for visual comfort
- Three lumen packages to cater for diverse applications
- Water- and vandal-proof as standard
- Easy installation with push-in connectors and simple through wiring
- Optional emergency lighting (incl. self-test)
- Optional motion detector, including daylight sensing, dimming and grouping function
- Optional DALI versions

CoreLine Wall-mounted

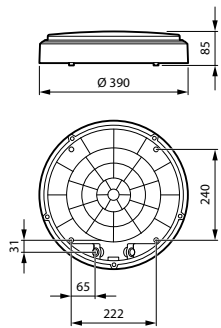
Application

- Corridors
- Staircases
- Public entrance areas
- Bathrooms
- Emergency exits
- Parking garages
- Outdoor safety lighting

Warnings and Safety

- For outdoor operations; wall-mounted applications only and all cables should run indoors with a maximum distance of 10 metres

Dimensional drawing



CoreLine Wall-mounted

General Information

Driver included	Yes
Number of gear units	Unit

Light Technical

All-in Type	All-in, Multi Color Temperature
Correlated Colour Temperature (Nom)	2700 K
Colour rendering index (CRI)	>80
Optic type	Symmetrical

Operating and Electrical

Protection class IEC	Safety class II
Input Voltage	220-240 V
Line Frequency	50 or 60 Hz
Suitable for random switching	No

Mechanical and Housing

Housing Colour	White
Mech. impact protection code	IK10
Ingress protection code	IP65

Approval and Application

Ambient temperature range	-20 to +40 °C
CE mark	Yes
ENEC mark	ENEC mark
Flammability mark	For mounting on normally flammable surfaces
Glow-wire test	Temperature 650 °C, duration 30 s
Stroboscopic effect	0.4

Initial Performance (IEC Compliant)

Initial chromaticity	(0.46,0.42) SDCM<3; (0.43,0.40) SDCM<5; (0.38,0.38) SDCM<3
Luminous flux tolerance	+/-10%

Light Technical

Order Code	Full Product Name	Luminous efficacy (rated)	
		(nom.)	Luminous Flux
911401873687	WL140V 14_24_40S/827_830_840 PSU WH	140 lm/W	1,400 lm
911401873787	WL140V 14_24_40S/827_830_840 PSU MDU WH	135 lm/W	1,400 lm
911401873887	WL140V 14_24_40S/827_830_840 PSR MDU WH	135 lm/W	1,400 lm
911401873987	WL140V 40S/827_830_840 PSED WH	140 lm/W	3,600 lm
911401874087	WL140V 40S/827_830_840 WIA WH	140 lm/W	3,600 lm

Operating and Electrical

Order Code	Full Product Name	Power Consumption
911401873687	WL140V 14_24_40S/827_830_840 PSU WH	29 W
911401873787	WL140V 14_24_40S/827_830_840 PSU MDU WH	30 W
911401873887	WL140V 14_24_40S/827_830_840 PSR MDU WH	30 W

Order Code	Full Product Name	Power Consumption
911401873987	WL140V 40S/827_830_840 PSED WH	29 W
911401874087	WL140V 40S/827_830_840 WIA WH	29 W

Controls and Dimming

CoreLine Wall-mounted

Order Code	Full Product Name	Dimmable	Embedded control
911401873687	WL140V 14_24_40S/ 827_830_840 PSU WH	No	-
911401873787	WL140V 14_24_40S/ 827_830_840 PSU MDU WH	No	Programmable movement and light sensor
911401873887	WL140V 14_24_40S/ 827_830_840 PSR MDU WH	Yes	Programmable movement and light sensor with wireless grouping

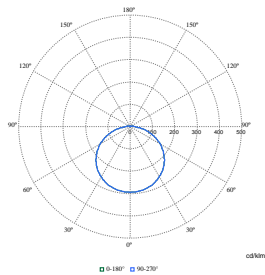
Order Code	Full Product Name	Dimmable	Embedded control
911401873987	WL140V 40S/827_830_840 PSED WH	Yes	-
911401874087	WL140V 40S/827_830_840 WIA WH	Yes	-

Emergency Operation

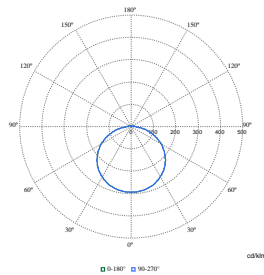
Order Code	Full Product Name	Central Emergency	Emergency lighting
911401873687	WL140V 14_24_40S/ 827_830_840 PSU WH	No	Emergency lighting ready (through compatible battery kit accessory)
911401873787	WL140V 14_24_40S/ 827_830_840 PSU MDU WH	No	Emergency lighting ready (through compatible battery kit accessory)
911401873887	WL140V 14_24_40S/ 827_830_840 PSR MDU WH	No	Emergency lighting ready (through compatible battery kit accessory)

Order Code	Full Product Name	Central Emergency	Emergency lighting
911401873987	WL140V 40S/ 827_830_840 PSED WH	Yes	DC operated central emergency lighting
911401874087	WL140V 40S/ 827_830_840 WIA WH	No	Emergency lighting ready (through compatible battery kit accessory)

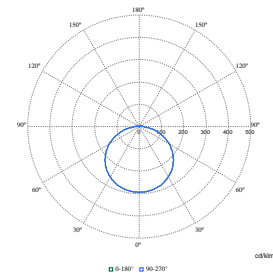
Polar Wide Diagrams



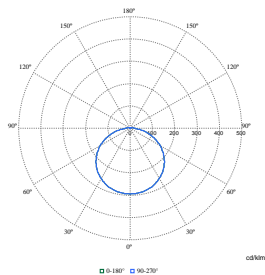
Polar Normal (separate) - 911401874087



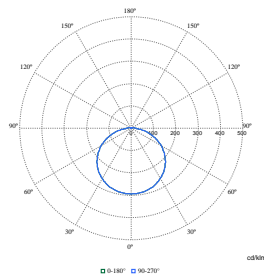
Polar Normal (separate) - 911401873787



Polar Normal (separate) - 911401873887



Polar Normal (separate) - 911401873687



Polar Normal (separate) - 911401873987

CoreLine Wall-mounted

