



# CoreLine Wall-mounted – the clear choice for LED

## CoreLine Wall-mounted

Whether for a new building or renovation of an existing space, customers want lighting solutions that provide quality of light and substantial energy and maintenance savings. The new CoreLine Wall-mounted range of LED products can be used to replace traditional wall-mounted luminaires incorporating compact fluorescent lamps. The process of selecting, installing and maintaining is so easy – it's a simple switch.

### Benefits

- Up to 55% energy savings compared with luminaires with PL-C lamps
- Direct replacement for traditional wall-mounted luminaires
- Complete range covering all application requirements in one product (light levels, IP65, IK10, certified emergency lighting, built-in controls)

### Features

- Unobtrusive design
- Three lumen packages replacing traditional wall-mounted luminaires with 1x18 W / 2x18 W / 2x26 W PL-C
- Water- and vandal-proof as standard
- Phase-cut dimming as standard
- Frosted diffuser ensuring homogeneous light effect and visual comfort
- Optional emergency lighting
- Optional on/off movement detection or programmed 100%-10%-0% corridor dimming functionality

## CoreLine Wall-mounted

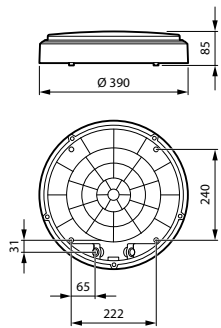
### Application

- Corridors
- Staircases
- Public entrance areas
- Bathrooms
- Emergency exits
- Parking garages
- Outdoor safety lighting

### Warnings and Safety

- For outdoor operations; wall-mounted applications only and all cables should run indoors with a maximum distance of 10 meters

### Dimensional drawing



# CoreLine Wall-mounted

## General Information

Driver included	Yes
Number of gear units	1 unit

## Light Technical

All-in Type	All-in, Multi Color Temperature
Correlated Color Temperature (Nom)	2700 K
Color rendering index (CRI)	>80
Optic type	Symmetrical

## Operating and Electrical

Protection class IEC	Safety class II
Input Voltage	220-240 V
Line Frequency	50 or 60 Hz
Suitable for random switching	No

## Mechanical and Housing

Housing Color	White
Mech. impact protection code	IK10
Ingress protection code	IP65

## Approval and Application

Ambient temperature range	-20 to +40 °C
CE mark	Yes
ENEC mark	ENEC mark
Flammability mark	For mounting on normally flammable surfaces
Glow-wire test	Temperature 650 °C, duration 30 s
Stroboscopic effect visibility measure (SVM)	0.4

## Initial Performance (IEC Compliant)

Initial chromaticity	(0.46,0.42) SDCM<3; (0.43,0.40) SDCM<5; (0.38,0.38) SDCM<3
Luminous flux tolerance	+/-10%

## Light Technical

Order Code	Full Product Name	Luminous Efficacy (rated)	
		(Nom)	Luminous Flux
30713299	WL140V 14_24_40S/827_830_840 PSU WH	140 lm/W	1,400 lm
30714999	WL140V 14_24_40S/827_830_840 PSU MDU WH	135 lm/W	1,400 lm
30715699	WL140V 14_24_40S/827_830_840 PSR MDU WH	135 lm/W	1,400 lm
30716399	WL140V 40S/827_830_840 PSED WH	140 lm/W	3,600 lm
30717099	WL140V 40S/827_830_840 WIA WH	140 lm/W	3,600 lm

## Operating and Electrical

Order Code	Full Product Name	Power Consumption
30713299	WL140V 14_24_40S/827_830_840 PSU WH	29 W
30714999	WL140V 14_24_40S/827_830_840 PSU MDU WH	30 W
30715699	WL140V 14_24_40S/827_830_840 PSR MDU WH	30 W

Order Code	Full Product Name	Power Consumption
30716399	WL140V 40S/827_830_840 PSED WH	29 W
30717099	WL140V 40S/827_830_840 WIA WH	29 W

## Controls and Dimming

# CoreLine Wall-mounted

Order Code	Full Product Name	Dimmable	Embedded control
30713299	WL140V 14_24_40S/827_830_840 PSU WH	No	-
30714999	WL140V 14_24_40S/827_830_840 PSU MDU WH	No	Programmable movement and light sensor
30715699	WL140V 14_24_40S/827_830_840 PSR MDU WH	Yes	Programmable movement and light sensor with wireless grouping

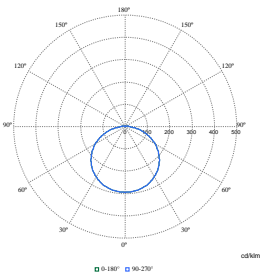
Order Code	Full Product Name	Dimmable	Embedded control
30716399	WL140V 40S/827_830_840 PSED WH	Yes	-
30717099	WL140V 40S/827_830_840 WIA WH	Yes	-

## Emergency Operation

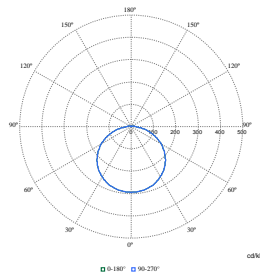
Order Code	Full Product Name	Central Emergency	Emergency lighting
30713299	WL140V 14_24_40S/827_830_840 PSU WH	No	Self-contained emergency lighting is possible when used with a compatible battery kit accessory
30714999	WL140V 14_24_40S/827_830_840 PSU MDU WH	No	Self-contained emergency lighting is possible when used with a compatible battery kit accessory
30715699	WL140V 14_24_40S/827_830_840 PSR MDU WH	No	Self-contained emergency lighting is possible when used with a compatible battery kit accessory

Order Code	Full Product Name	Central Emergency	Emergency lighting
30716399	WL140V 40S/827_830_840 PSED WH	Yes	DC operated central emergency lighting
30717099	WL140V 40S/827_830_840 WIA WH	No	Self-contained emergency lighting is possible when used with a compatible battery kit accessory

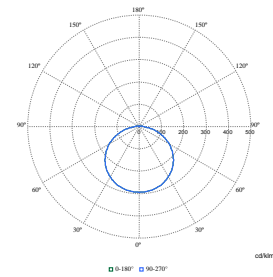
## Polar Wide Diagrams



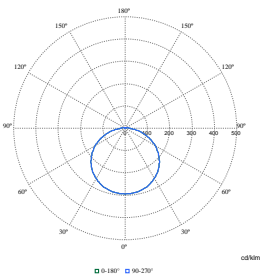
Polar Normal (separate) - 911401874087



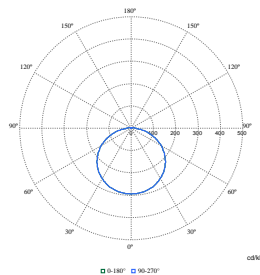
Polar Normal (separate) - 911401873787



Polar Normal (separate) - 911401873887



Polar Normal (separate) - 911401873687



Polar Normal (separate) - 911401873987

## CoreLine Wall-mounted

