



# CoreLine wall-mounted – For every project, where light really matters. Suits your specific application.

## CoreLine Wall-mounted

CoreLine wall-mounted solutions deliver on the CoreLine promise of innovative, easy-to-install and high-quality luminaires. These circular-shaped, surface-mounted luminaires are suitable for both ceiling and wall installations and are easy to apply in circulation areas such as corridors, hallways and staircases. The modern, unobtrusive design, combined with a homogeneous light distribution, ensures this luminaire will blend into the architecture of most buildings. All-in features provide up to three lumen packages and three color temperature options in one luminaire. Installers can easily fit the luminaire according to the application need on site. And thanks to the push-in connectors, installation of the CoreLine WL140V is fast and straightforward. This family includes Interact ready luminaires with integrated wireless communications, ready for use with Interact gateways, sensors and software.

# CoreLine Wall-mounted

## Benefits

- Delivers the right lighting settings for various applications
- Easy installation with push-in connectors and through wiring possibility
- Slim and unobtrusive design in black or grey, plus half-moon (eye-lid) accessories
- One product serves multi-functional purposes with dipswitch settings
- Direct replacement for traditional wall-mounted luminaires
- Water and vandal-proof as standard
- Emergency ready

## Features

- High efficacy up to 140lm/W
- Three lumen packages and three-color temperatures to cater for diverse applications
- Choice of drivers: DALI with DC compatible, wireless with Interact ready
- Compatible emergency lighting kit (incl. self-test) available for self-installation
- IP65/IK10 as standard
- Optional motion detection, including daylight sensing, dimming and wireless grouping function with MDU

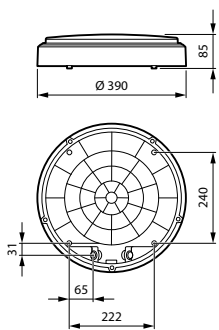
## Application

- Offices
- Municipal Buildings
- Parking Garages
- Corridors
- Staircases
- Outdoor safety lighting

## Warnings and Safety

- For outdoor operations; wall-mounted applications only and all cables should run indoors with a maximum distance of 10 meters

## Dimensional drawing



# CoreLine Wall-mounted

## General Information

Driver included	Yes
Number of gear units	1 unit

## Light Technical

All-in Type	All-in, Multi Color Temperature
Correlated Color Temperature (Nom)	2700 K
Color rendering index (CRI)	>80
Optic type	Symmetrical

## Operating and Electrical

Protection class IEC	Safety class II
Input Voltage	220-240 V
Line Frequency	50 or 60 Hz
Suitable for random switching	No

## Mechanical and Housing

Housing Color	White
Mech. impact protection code	IK10
Ingress protection code	IP65

## Approval and Application

Ambient temperature range	-20 to +40 °C
CE mark	Yes
ENEC mark	ENEC mark
Flammability mark	For mounting on normally flammable surfaces
Glow-wire test	Temperature 650 °C, duration 30 s
Stroboscopic effect visibility measure (SVM)	0.4

## Initial Performance (IEC Compliant)

Initial chromaticity	(0.46,0.42) SDCM<3; (0.43,0.40) SDCM<5; (0.38,0.38) SDCM<3
Luminous flux tolerance	+/-10%

## Light Technical

Order Code	Full Product Name	Luminous Efficacy (rated)	
		(Nom)	Luminous Flux
911401873687	WL140V 14_24_40S/827_830_840 PSU WH	140 lm/W	1,400 lm
911401873787	WL140V 14_24_40S/827_830_840 PSU MDU WH	135 lm/W	1,400 lm
911401873887	WL140V 14_24_40S/827_830_840 PSR MDU WH	135 lm/W	1,400 lm
911401873987	WL140V 40S/827_830_840 PSED WH	140 lm/W	3,600 lm
911401874087	WL140V 40S/827_830_840 WIA WH	140 lm/W	3,600 lm

## Operating and Electrical

Order Code	Full Product Name	Power Consumption
911401873687	WL140V 14_24_40S/827_830_840 PSU WH	29 W
911401873787	WL140V 14_24_40S/827_830_840 PSU MDU WH	30 W
911401873887	WL140V 14_24_40S/827_830_840 PSR MDU WH	30 W

Order Code	Full Product Name	Power Consumption
911401873987	WL140V 40S/827_830_840 PSED WH	29 W
911401874087	WL140V 40S/827_830_840 WIA WH	29 W

## Controls and Dimming

# CoreLine Wall-mounted

Order Code	Full Product Name	Dimmable
911401873687	WL140V 14_24_40S/827_830_840 PSU WH	No
911401873787	WL140V 14_24_40S/827_830_840 PSU MDU WH	No
911401873887	WL140V 14_24_40S/827_830_840 PSR MDU WH	Yes

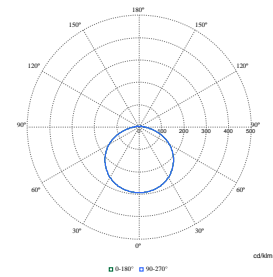
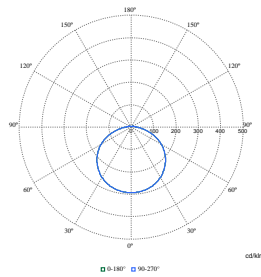
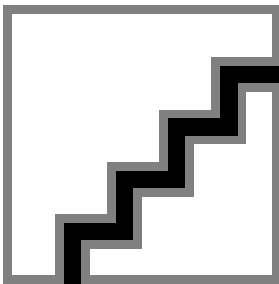
Order Code	Full Product Name	Dimmable
911401873987	WL140V 40S/827_830_840 PSED WH	Yes
911401874087	WL140V 40S/827_830_840 WIA WH	Yes

## Emergency Operation

Order Code	Full Product Name	Central Emergency	Emergency lighting
911401873687	WL140V 14_24_40S/827_830_840 PSU WH	No	Emergency lighting ready (through compatible battery kit accessory)
911401873787	WL140V 14_24_40S/827_830_840 PSU MDU WH	No	Emergency lighting ready (through compatible battery kit accessory)
911401873887	WL140V 14_24_40S/827_830_840 PSR MDU WH	No	Emergency lighting ready (through compatible battery kit accessory)

Order Code	Full Product Name	Central Emergency	Emergency lighting
911401873987	WL140V 40S/827_830_840 PSED WH	Yes	DC operated central emergency lighting
911401874087	WL140V 40S/827_830_840 WIA WH	No	Emergency lighting ready (through compatible battery kit accessory)

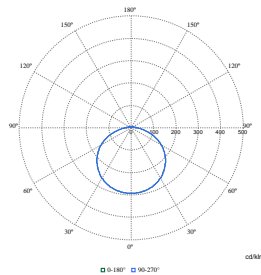
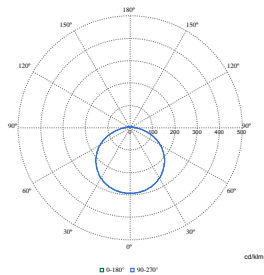
## Polar Wide Diagrams



Polar Normal (separate) - null - 911401874087

Polar Normal (separate) - null - 911401873787

Polar Normal (separate) - null - 911401873887



Polar Normal (separate) - null - 911401873987

Polar Normal (separate) - null - 911401873687

## CoreLine Wall-mounted

