



## SunStay Pro gen2: All-in-one connected solar street light

SunStay Pro gen2 solar street lights make it easier than ever to meet your sustainability targets. With an integrated solar panel and option for additional vertical PV panel, Lithium Ferro Phosphate (LFP) battery, these solar street lights also feature charger options for off-grid and hybrid operation. Sunstay Pro gen2 comes in wide range of colour temperatures with dedicated light recipes that help to preserve dark skies. All in a distinctive luminaire housing design with a robust, long-lasting (PDC) aluminium housing. So you can bring light to areas without access to the electric grid for years to come. SunStay Pro gen2 solar lighting uses the latest LED technology for a long lifetime of 100,000 hours with best-in-class lumen maintenance @L95. The specially-designed pole mounting spigot offers different tilt angles and the option for lateral and pole top mounting. With the Ledgine O optical platform you can also increase the distance between poles to reduce the total cost of ownership in a wide range of applications. Sunstay Pro gen2 is made for quick and simple installation with a re-designed cable feed through and top-down, tool-less access to the gear components for improved serviceability. And thanks to Signify Service tag, you have access to all the documentation you need on site. Connectivity and dimming options

are available, including a radar motion sensor mounted to automatically increase light levels when presence is detected. There's also the option to group and control neighbouring street lights through an internal mesh network to increase light levels in case of presence or activity detection. What's more, VGP726 SunStay Pro gen2 Solar lighting is System Ready so it can be paired with lighting management systems such as Interact City at any point in the future. The all-in-one choice for today and tomorrow.

## Benefits

- Bring light to areas with no access to the electric grid
- Preserve landscapes (no cabling trenches)
- Customise lighting thanks to Ledgine O platform
- Reduce light pollution with dedicated light recipes
- Robust housing with high impact (IK08) and ingress protection (IP66)
- Saves 100% energy with off-grid operation (up to 90% in hybrid operation)
- Specially-designed pole mounting bracket with 0° to 15° tilt angles, 2.5° tilt precision, post top and lateral mounting positions
- Dimming profile setting and radar occupancy sensor maximise autonomy
- MPPT charge controller for maximum efficiency (off-grid and hybrid)
- Self-diagnostics, battery charging, discharging and cut-off LED indicators
- Future ready with SR socket, Interact City connectivity and Philips sensor options

## Applications

- Cycle paths, footpaths and pedestrian crossings
- Urban and residential streets, roundabouts, parks and playgrounds, shopping areas
- Industrial areas, parking areas, petrol stations, airports, harbours, public transport areas
- To ensure the performance and autonomy of street light, solar sizing calculation to be done by a trained Signify team or trained partner with a Signify team
- For effective performance of solar street lights, a photo voltaic panel should be exposed to the sun all day and should not be installed in shadow

## Features

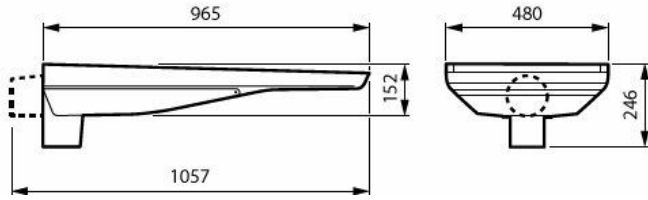
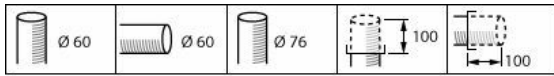
- Replaceable Lithium Ferro Phosphate battery for long life and hassle-free operations
- Choice of 40+ beams, internal louver options

## Versions

VGP726 SunStay Pro gen2  
standard photo



## Dimensional drawing



VGP726 LED60/740 OG-BLE DM10 III DGR 30A

## Product details



VGP726 SunStay Pro gen2  
DP



VGP726 SunStay Pro gen2  
DP



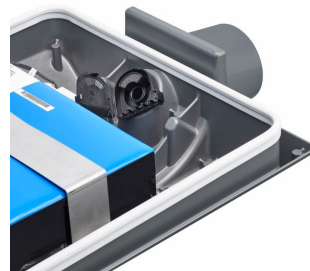
VGP726 SunStay Pro gen2  
DP



VGP726 SunStay Pro gen2  
DP



VGP726 SunStay Pro gen2  
DP



VGP726 SunStay Pro gen2  
DP



VGP726 SunStay Pro gen2  
DP



VGP726 SunStay Pro gen2  
DP



VGP726 SunStay Pro gen2  
DP



VGP726 SunStay Pro gen2  
DP

### General Information

Light source replaceable	Yes
Driver included	Yes

### Light Technical

Upwards light output ratio	0
Correlated Colour Temperature (Nom)	4000 K
Colour rendering index (CRI)	≥70
Light source colour	740 neutral white
Luminaire light beam spread	160° x 95°
Optic type outdoor	Distribution medium 10

### Controls and Dimming

Dimmable	Yes
Maximum dim level	10%

## Mechanical and Housing

Housing Colour	Grey
Ingress protection code	IP66 [Dust penetration-protected, jet-proof]
Mech. impact protection code	IK09 [10 J]
Standard tilt angle post-top	0°
Standard tilt angle side entry	0°
Optical cover type	Glass

## Approval and Application

Flammability mark	For mounting on normally flammable surfaces
CE mark	Yes

## Product Data

Product family code	VGP726 [Sunstay Pro gen2]
---------------------	---------------------------

## General Information

Order Code	Full Product Name	Lamp family code
912300060597	VGP726 LED60/740 OG-BLE DM10 III DGR 30A	LED60
912300060599	VGP726 LED80/740 HY-BLE DM10 DGR 76P 18A	LED80

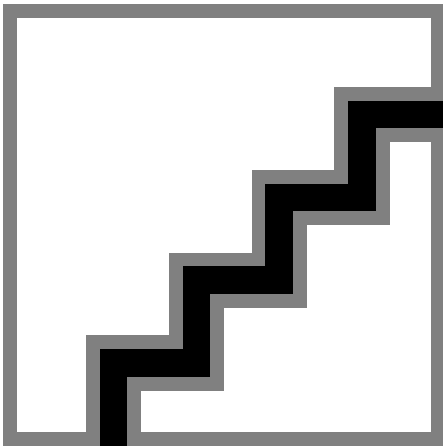
## Light Technical

Order Code	Full Product Name	Luminous Flux
912300060597	VGP726 LED60/740 OG-BLE DM10 III DGR 30A	5,384 lm
912300060599	VGP726 LED80/740 HY-BLE DM10 DGR 76P 18A	7,134 lm

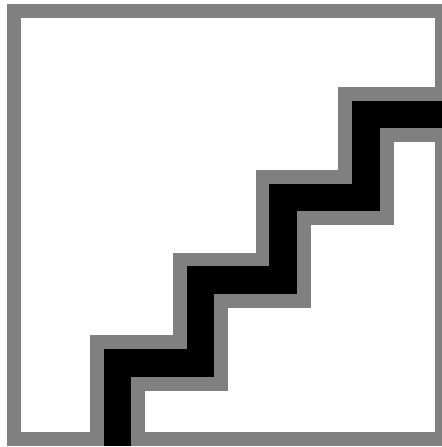
## Operating and Electrical

Order Code	Full Product Name	Power Consumption	Surge Protection (Common/Differential)
912300060597	VGP726 LED60/740 OG-BLE DM10 III DGR 30A	32.7 W	-
912300060599	VGP726 LED80/740 HY-BLE DM10 DGR 76P 18A	45.1 W	Surge protection level until 10 kV differential mode and 10 kV common mode kV

## Polar normal diagrams



VGP726N - 912300060597



VGP726N - 912300060599