



SunStay Pro gen2: All-in-one connected solar street light

SunStay Pro gen2 solar street lights make it easier than ever to meet your sustainability targets. With an integrated solar panel and option for additional vertical PV panel, Lithium Ferro Phosphate (LFP) battery, these solar street lights also feature charger options for off-grid and hybrid operation. Sunstay Pro gen2 comes in wide range of color temperatures with dedicated light recipes that help to preserve dark skies. All in a distinctive luminaire housing design with a robust, long-lasting (PDC) aluminum housing. So you can bring light to areas without access to the electric grid for years to come. SunStay Pro gen2 solar lighting uses the latest LED technology for a long lifetime of 100,000 hours with best-in-class lumen maintenance @L95. The specially-designed pole mounting spigot offers different tilt angles, and the option for lateral and pole top mounting. With the Ledge O optical platform you can also increase the distance between poles to reduce the total cost of ownership in a wide range of applications. Sunstay Pro gen2 is made for quick and simple installation with a re-designed cable feed through and top-down, tool-less access to the gear components for improved serviceability. And thanks to Signify Service tag, you have access to all the documentation you need on site. Connectivity and dimming options

are available, including a radar motion sensor mounted to automatically increase light levels when presence is detected. There's also the option to group and control neighboring street lights through an internal mesh network to increase light levels in case of presence or activity detection. What's more, VGP726 SunStay Pro gen2 Solar lighting is System Ready so it can be paired with lighting management systems such as Interact City at any point in the future. The all-in-one choice for today and tomorrow.

Benefits

- Bring light to areas with no access to electric grid
- Preserve landscapes (no cabling trenches)
- Customize lighting thanks to Ledgine O platform
- Reduce light pollution with dedicated light recipes
- Robust housing with high impact (IK08) and ingress protection (IP66)
- Saves 100% energy with off-grid operation (upto 90% in hybrid operation)
- Specially-designed pole mounting bracket with 0° to 15° tilt angles, 2.5° tilt precision, post top and lateral mounting positions
- Dimming profile setting and radar occupancy sensor maximize autonomy
- MPPT charge controller for maximum efficiency (off-grid and hybrid)
- Self-diagnostics, battery charging, discharging and cut-off LED indicators
- Future ready with SR socket, Interact City connectivity and Philips sensor options

Applications

- Cycle paths, footpaths and pedestrian crossings
- Urban and residential streets, roundabouts, parks and playgrounds, Shopping areas
- Industrial areas, parking areas, petrol stations, airports, harbors, public transport areas
- To ensure performance and autonomy of streetlight, solar sizing calculation to be done by trained signify team or trained partner by signify team
- For effective performance of solar street light, photo voltaic panel should be exposed to sun all day and should not be installed under shadows

Features

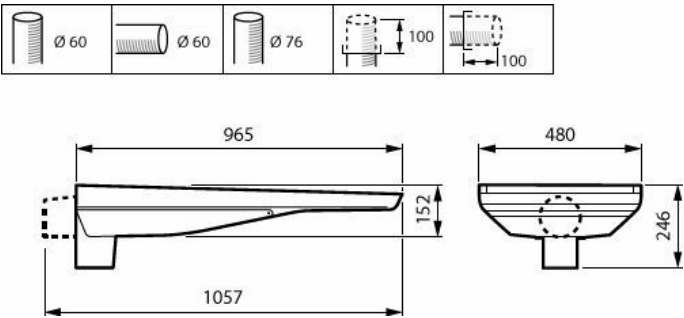
- Replaceable Lithium Ferro Phosphate battery for long life and hassle-free operations
- Choice of 40+ beams, internal louver options

Versions

VGP726 SunStay Pro gen2
standard photo



Dimensional drawing



VGP726 LED30/740 OG-BLE DM10 III DGR 76P

Product details



VGP726 SunStay Pro gen2 DP



VGP726 SunStay Pro gen2 DP



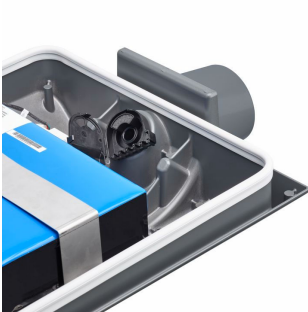
VGP726 SunStay Pro gen2 DP



VGP726 SunStay Pro gen2 DP



VGP726 SunStay Pro gen2 DP



VGP726 SunStay Pro gen2 DP



VGP726 SunStay Pro gen2
DP



VGP726 SunStay Pro gen2
DP



VGP726 SunStay Pro gen2
DP



VGP726 SunStay Pro gen2
DP

General Information

| | |
|--------------------------|-----|
| Light source replaceable | Yes |
| Driver included | Yes |

Light Technical

| | |
|-----------------------------|------------------------|
| Upward light output ratio | 0 |
| Color rendering index (CRI) | ≥70 |
| Luminaire light beam spread | 160° x 95° |
| Optic type outdoor | Distribution medium 10 |

Controls and Dimming

| | |
|----------|-----|
| Dimmable | Yes |
|----------|-----|

Mechanical and Housing

| | |
|--------------------------------|--|
| Housing Color | Grey |
| Ingress protection code | IP66 [Dust penetration-protected, jet-proof] |
| Mech. impact protection code | IK09 [10 J] |
| Standard tilt angle posttop | 0° |
| Standard tilt angle side entry | 0° |
| Optical cover type | Glass |

Approval and Application

| | |
|-------------------|---|
| Flammability mark | For mounting on normally flammable surfaces |
| CE mark | Yes |

Product Data

| | |
|---------------------|---------------------------|
| Product family code | VGP726 [Sunstay Pro gen2] |
|---------------------|---------------------------|

General Information

| Order Code | Full Product Name | Lamp family code |
|------------|--|------------------|
| 79885400 | VGP726 LED30/730 OG-BLE DM10 III DGR 76P | LED30 |
| 79886100 | VGP726 LED60/730 OG-BLE DM10 III DGR 76P | LED60 |
| 79887800 | VGP726 LED40/730 HY-BLE DM10 DGR 76P 12A | LED40 |
| 79888500 | VGP726 LED80/730 HY-BLE DM10 DGR 76P 18A | LED80 |
| 79889200 | VGP726 LED30/740 OG-BLE DM10 III DGR 76P | LED30 |
| 79890800 | VGP726 LED60/740 OG-BLE DM10 III DGR 30A | LED60 |
| 79891500 | VGP726 LED40/740 HY-BLE DM10 DGR 76P 12A | LED40 |
| 79892200 | VGP726 LED80/740 HY-BLE DM10 DGR 76P 18A | LED80 |

Light Technical

| Order Code | Full Product Name | Luminous Flux | Light source color | Correlated Color Temperature (Nom) |
|------------|--|---------------|--------------------|------------------------------------|
| 79885400 | VGP726 LED30/730 OG-BLE DM10 III DGR 76P | 2,706 lm | 730 warm white | 3000 K |
| 79886100 | VGP726 LED60/730 OG-BLE DM10 III DGR 76P | 5,378 lm | 730 warm white | 3000 K |
| 79887800 | VGP726 LED40/730 HY-BLE DM10 DGR 76P 12A | 3,597 lm | 730 warm white | 3000 K |
| 79888500 | VGP726 LED80/730 HY-BLE DM10 DGR 76P 18A | 7,120 lm | 730 warm white | 3000 K |
| 79889200 | VGP726 LED30/740 OG-BLE DM10 III DGR 76P | 2,707 lm | 740 neutral white | 4000 K |
| 79890800 | VGP726 LED60/740 OG-BLE DM10 III DGR 30A | 5,384 lm | 740 neutral white | 4000 K |
| 79891500 | VGP726 LED40/740 HY-BLE DM10 DGR 76P 12A | 3,600 lm | 740 neutral white | 4000 K |
| 79892200 | VGP726 LED80/740 HY-BLE DM10 DGR 76P 18A | 7,134 lm | 740 neutral white | 4000 K |

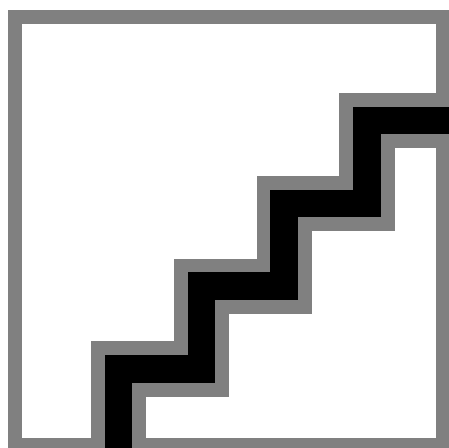
Operating and Electrical

| Order Code | Full Product Name | Surge Protection (Common/Differential) | Power Consumption |
|------------|--|---|-------------------|
| 79885400 | VGP726 LED30/730 OG-BLE DM10 III DGR 76P | - | 18.3 W |
| 79886100 | VGP726 LED60/730 OG-BLE DM10 III DGR 76P | - | 35.1 W |
| 79887800 | VGP726 LED40/730 HY-BLE DM10 DGR 76P 12A | Surge protection level until 10 kV differential mode and 10 kV common mode kV | 25 W |
| 79888500 | VGP726 LED80/730 HY-BLE DM10 DGR 76P 18A | Surge protection level until 10 kV differential mode and 10 kV common mode kV | 48.4 W |
| 79889200 | VGP726 LED30/740 OG-BLE DM10 III DGR 76P | - | 17.1 W |
| 79890800 | VGP726 LED60/740 OG-BLE DM10 III DGR 30A | - | 32.7 W |
| 79891500 | VGP726 LED40/740 HY-BLE DM10 DGR 76P 12A | Surge protection level until 10 kV differential mode and 10 kV common mode kV | 23.3 W |
| 79892200 | VGP726 LED80/740 HY-BLE DM10 DGR 76P 18A | Surge protection level until 10 kV differential mode and 10 kV common mode kV | 45.1 W |

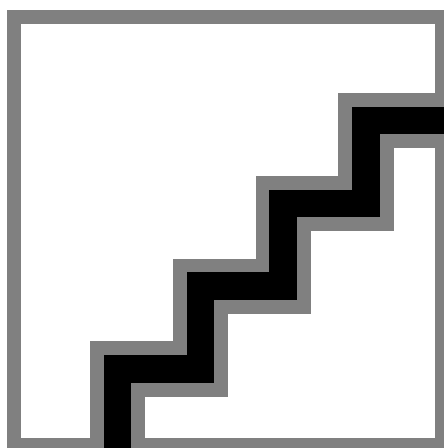
Controls and Dimming

| Order Code | Full Product Name | Maximum dim level |
|------------|--|-------------------|
| 79885400 | VGP726 LED30/730 OG-BLE DM10 III DGR 76P | 20% |
| 79886100 | VGP726 LED60/730 OG-BLE DM10 III DGR 76P | 10% |
| 79887800 | VGP726 LED40/730 HY-BLE DM10 DGR 76P 12A | 20% |
| 79888500 | VGP726 LED80/730 HY-BLE DM10 DGR 76P 18A | 10% |
| 79889200 | VGP726 LED30/740 OG-BLE DM10 III DGR 76P | 20% |
| 79890800 | VGP726 LED60/740 OG-BLE DM10 III DGR 30A | 10% |
| 79891500 | VGP726 LED40/740 HY-BLE DM10 DGR 76P 12A | 20% |
| 79892200 | VGP726 LED80/740 HY-BLE DM10 DGR 76P 18A | 10% |

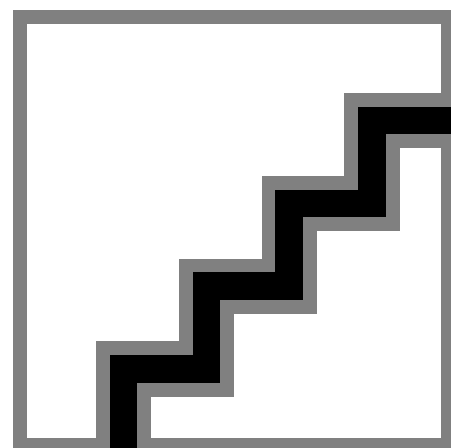
Polar normal diagrams



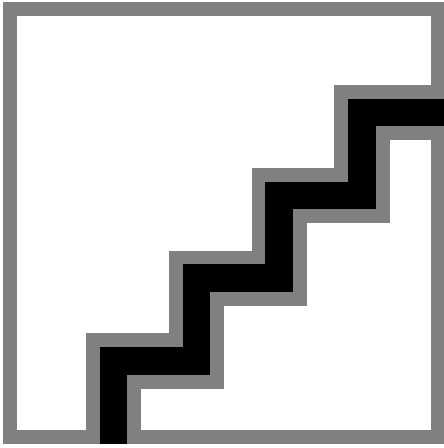
VGP726N - 912300060593



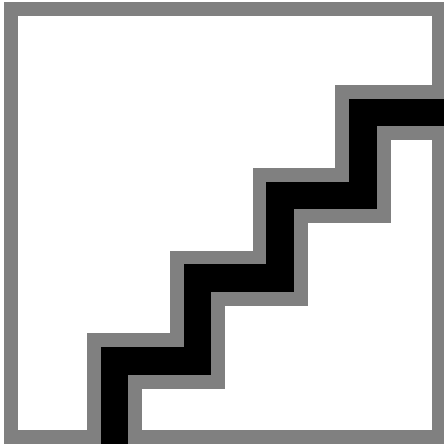
VGP726N - 912300060597



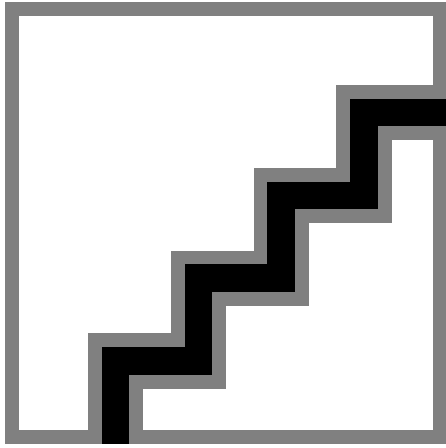
VGP726N - 912300060594



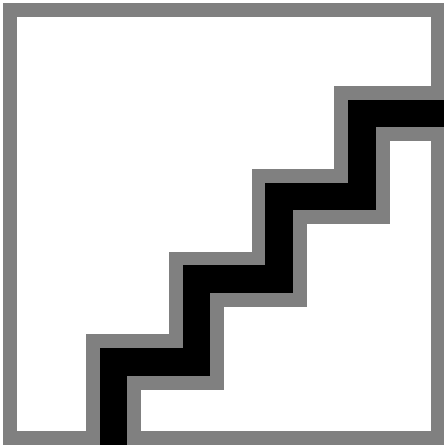
VGP726N - 912300060599



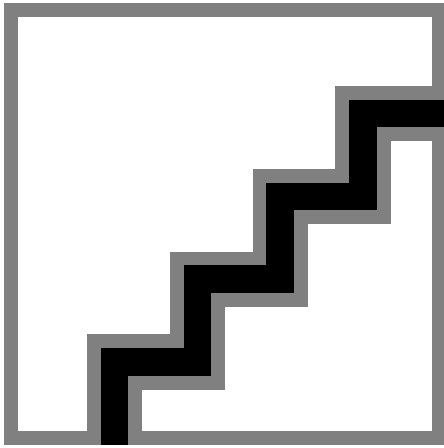
VGP726N - 912300060595



VGP726N - 912300060592



VGP726N - 912300060596



VGP726N - 912300060598