



## SunStay Pro gen2: All-in-one connected solar street light

SunStay Pro gen2 solar street lights make it easier than ever to meet your sustainability targets. With an integrated solar panel and option for additional vertical PV panel, Lithium Ferro Phosphate (LFP) battery, these solar street lights also feature charger options for off-grid and hybrid operation. Sunstay Pro gen2 comes in wide range of color temperatures with dedicated light recipes that help to preserve dark skies. All in a distinctive luminaire housing design with a robust, long-lasting (PDC) aluminum housing. So you can bring light to areas without access to the electric grid for years to come. SunStay Pro gen2 solar lighting uses the latest LED technology for a long lifetime of 100,000 hours with best-in-class lumen maintenance @L95. The specially-designed pole mounting spigot offers different tilt angles, and the option for lateral and pole top mounting. With the Ledge O optical platform you can also increase the distance between poles to reduce the total cost of ownership in a wide range of applications. Sunstay Pro gen2 is made for quick and simple installation with a re-designed cable feed through and top-down, tool-less access to the gear components for improved serviceability. And thanks to Signify Service tag, you have access to all the documentation you need on site. Connectivity and dimming options

are available, including a radar motion sensor mounted to automatically increase light levels when presence is detected. There's also the option to group and control neighboring street lights through an internal mesh network to increase light levels in case of presence or activity detection. What's more, VGP726 SunStay Pro gen2 Solar lighting is System Ready so it can be paired with lighting management systems such as Interact City at any point in the future. The all-in-one choice for today and tomorrow.

## Benefits

- Bring light to areas with no access to electric grid
- Preserve landscapes (no cabling trenches)
- Customize lighting thanks to Ledgine O platform
- Reduce light pollution with dedicated light recipes
- Robust housing with high impact (IK08) and ingress protection (IP66)
- Saves 100% energy with off-grid operation (upto 90% in hybrid operation)
- Specially-designed pole mounting bracket with 0° to 15° tilt angles, 2.5° tilt precision, post top and lateral mounting positions
- Dimming profile setting and radar occupancy sensor maximize autonomy
- MPPT charge controller for maximum efficiency (off-grid and hybrid)
- Self-diagnostics, battery charging, discharging and cut-off LED indicators
- Future ready with SR socket, Interact City connectivity and Philips sensor options

## Applications

- Cycle paths, footpaths and pedestrian crossings
- Urban and residential streets, roundabouts, parks and playgrounds, Shopping areas
- Industrial areas, parking areas, petrol stations, airports, harbors, public transport areas
- To ensure performance and autonomy of streetlight, solar sizing calculation to be done by trained signify team or trained partner by signify team
- For effective performance of solar street light, photo voltaic panel should be exposed to sun all day and should not be installed under shadows

## Features

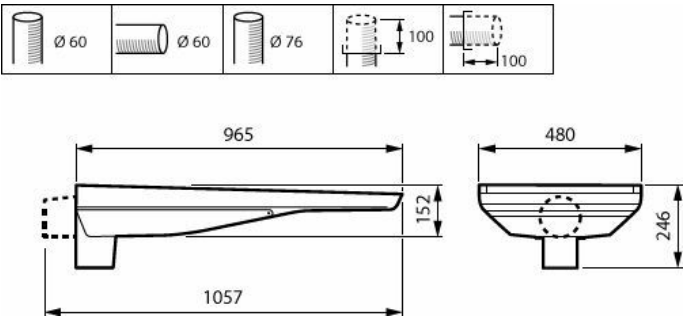
- Replaceable Lithium Ferro Phosphate battery for long life and hassle-free operations
- Choice of 40+ beams, internal louver options

## Versions

VGP726 SunStay Pro gen2  
standard photo



Dimensional drawing



VGP726 LED60/730 OG-BLE DM10 III DGR 76P

Product details



VGP726 SunStay Pro gen2 DP



VGP726 SunStay Pro gen2 DP



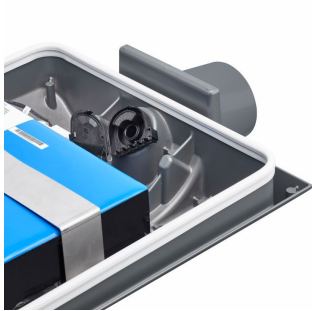
VGP726 SunStay Pro gen2 DP



VGP726 SunStay Pro gen2 DP



VGP726 SunStay Pro gen2 DP



VGP726 SunStay Pro gen2 DP



VGP726 SunStay Pro gen2  
DP



VGP726 SunStay Pro gen2  
DP



VGP726 SunStay Pro gen2  
DP



VGP726 SunStay Pro gen2  
DP

## General Information

Light source replaceable	Yes
Driver included	Yes

## Light Technical

Upward light output ratio	0
Color rendering index (CRI)	≥70
Luminaire light beam spread	160° x 95°
Optic type outdoor	Distribution medium 10

## Controls and Dimming

Dimmable	Yes
----------	-----

## Mechanical and Housing

Housing Color	Grey
Ingress protection code	IP66 [Dust penetration-protected, jet-proof]
Mech. impact protection code	IK09 [10 J]
Standard tilt angle posttop	0°
Standard tilt angle side entry	0°
Optical cover type	Glass

## Approval and Application

Flammability mark	For mounting on normally flammable surfaces
CE mark	Yes

## Product Data

Product family code	VGP726 [Sunstay Pro gen2]
---------------------	---------------------------

## General Information

Order Code	Full Product Name	Lamp family code
912300060592	VGP726 LED30/730 OG-BLE DM10 III DGR 76P	LED30
912300060593	VGP726 LED60/730 OG-BLE DM10 III DGR 76P	LED60
912300060594	VGP726 LED40/730 HY-BLE DM10 DGR 76P 12A	LED40
912300060595	VGP726 LED80/730 HY-BLE DM10 DGR 76P 18A	LED80
912300060596	VGP726 LED30/740 OG-BLE DM10 III DGR 76P	LED30
912300060597	VGP726 LED60/740 OG-BLE DM10 III DGR 30A	LED60
912300060598	VGP726 LED40/740 HY-BLE DM10 DGR 76P 12A	LED40
912300060599	VGP726 LED80/740 HY-BLE DM10 DGR 76P 18A	LED80

## Light Technical

Order Code	Full Product Name	Luminous Flux	Light source color	Correlated Color Temperature (Nom)
912300060592	VGP726 LED30/730 OG-BLE DM10 III DGR 76P	2,706 lm	730 warm white	3000 K
912300060593	VGP726 LED60/730 OG-BLE DM10 III DGR 76P	5,378 lm	730 warm white	3000 K
912300060594	VGP726 LED40/730 HY-BLE DM10 DGR 76P 12A	3,597 lm	730 warm white	3000 K
912300060595	VGP726 LED80/730 HY-BLE DM10 DGR 76P 18A	7,120 lm	730 warm white	3000 K
912300060596	VGP726 LED30/740 OG-BLE DM10 III DGR 76P	2,707 lm	740 neutral white	4000 K
912300060597	VGP726 LED60/740 OG-BLE DM10 III DGR 30A	5,384 lm	740 neutral white	4000 K
912300060598	VGP726 LED40/740 HY-BLE DM10 DGR 76P 12A	3,600 lm	740 neutral white	4000 K
912300060599	VGP726 LED80/740 HY-BLE DM10 DGR 76P 18A	7,134 lm	740 neutral white	4000 K

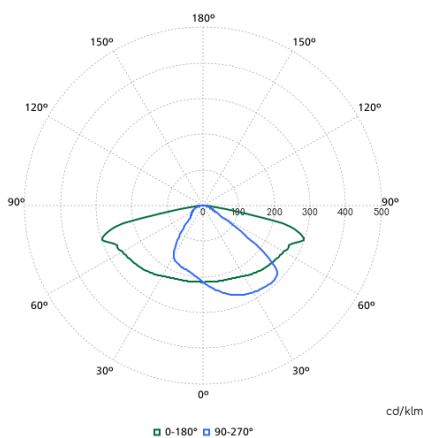
## Operating and Electrical

Order Code	Full Product Name	Surge Protection (Common/Differential)	Power Consumption
912300060592	VGP726 LED30/730 OG-BLE DM10 III DGR 76P	-	18.3 W
912300060593	VGP726 LED60/730 OG-BLE DM10 III DGR 76P	-	35.1 W
912300060594	VGP726 LED40/730 HY-BLE DM10 DGR 76P 12A	Surge protection level until 10 kV differential mode and 10 kV common mode kV	25 W
912300060595	VGP726 LED80/730 HY-BLE DM10 DGR 76P 18A	Surge protection level until 10 kV differential mode and 10 kV common mode kV	48.4 W
912300060596	VGP726 LED30/740 OG-BLE DM10 III DGR 76P	-	17.1 W
912300060597	VGP726 LED60/740 OG-BLE DM10 III DGR 30A	-	32.7 W
912300060598	VGP726 LED40/740 HY-BLE DM10 DGR 76P 12A	Surge protection level until 10 kV differential mode and 10 kV common mode kV	23.3 W
912300060599	VGP726 LED80/740 HY-BLE DM10 DGR 76P 18A	Surge protection level until 10 kV differential mode and 10 kV common mode kV	45.1 W

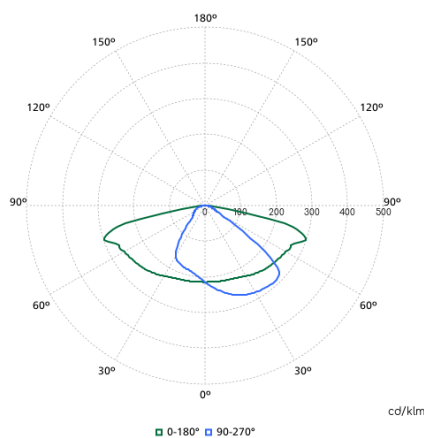
## Controls and Dimming

Order Code	Full Product Name	Maximum dim level
912300060592	VGP726 LED30/730 OG-BLE DM10 III DGR 76P	20%
912300060593	VGP726 LED60/730 OG-BLE DM10 III DGR 76P	10%
912300060594	VGP726 LED40/730 HY-BLE DM10 DGR 76P 12A	20%
912300060595	VGP726 LED80/730 HY-BLE DM10 DGR 76P 18A	10%
912300060596	VGP726 LED30/740 OG-BLE DM10 III DGR 76P	20%
912300060597	VGP726 LED60/740 OG-BLE DM10 III DGR 30A	10%
912300060598	VGP726 LED40/740 HY-BLE DM10 DGR 76P 12A	20%
912300060599	VGP726 LED80/740 HY-BLE DM10 DGR 76P 18A	10%

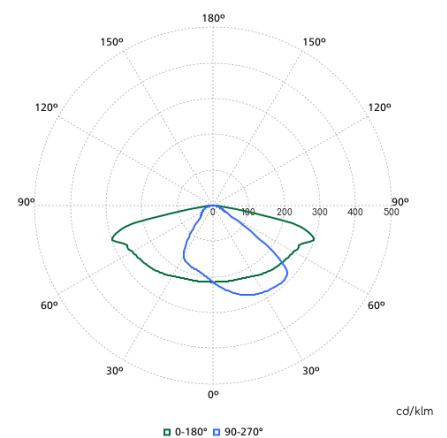
## Polar normal diagrams



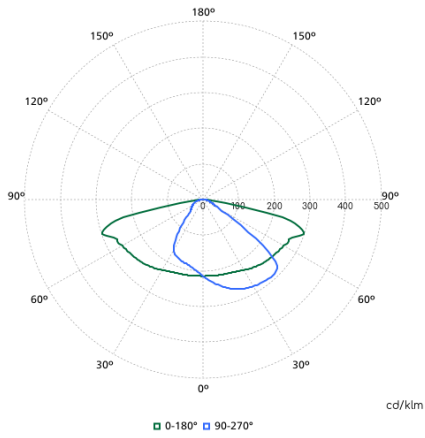
VGP726N - 912300060593



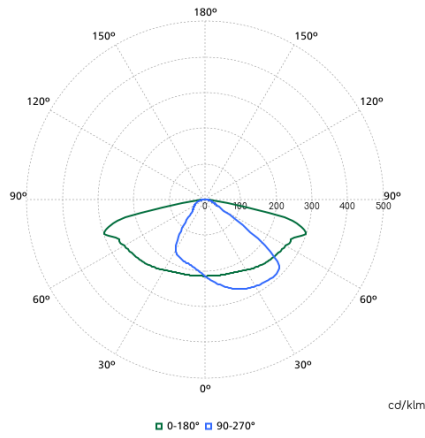
VGP726N - 912300060597



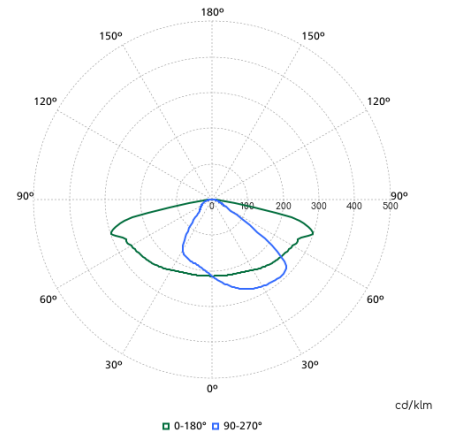
VGP726N - 912300060594



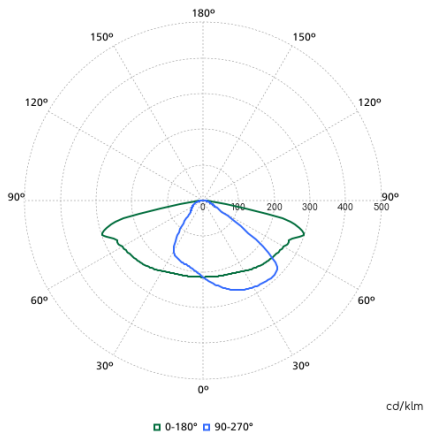
VGP726N - 912300060599



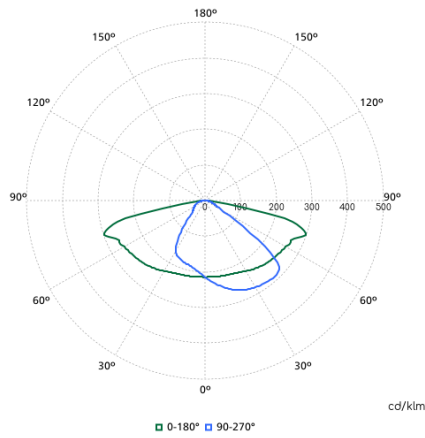
VGP726N - 912300060595



VGP726N - 912300060592



VGP726N - 912300060596



VGP726N - 912300060598