



Iconic Urban Design appealing design and state of art technology

UrbanEdge

UrbanEdge enhances urban environments by creating spaces where people feel safe and good, making your city a more attractive place to live and to visit. With a timeless, elegant design, UrbanEdge takes advantage of the latest LED technology to efficiently light any kind of urban space while generating significant energy savings. UrbanEdge is available in five sizes to meet the various lighting requirements of the city. This product family stands out in terms of efficiency, connectivity and versatility. Thanks to its broad range of lumen packages, its impressive scope of light distributions and its various control options. This connected-ready luminaire offers a realistic platform for smart cities. Its' lightweight optimized design minimizes the carbon footprint at every stage of the product lifecycle. UrbanEdge stands out as the best in class for a circular economy.

Benefits

- Consistency for a broad range of applications
- High performance lighting solution
- Best in class for a circular economy
- A new generation for photometrical engines with option of High Power/MID Power LEDs
- Connected ready solution

Features

- High pressure Aluminium Die cast
- IP66,IK10
- High and low Voltage Cut off,440V Protection for 8 hrs
- High value of longitudinal uniformity enhances overall uniformity
- Option of coded mains/Cellular/RF connectivity

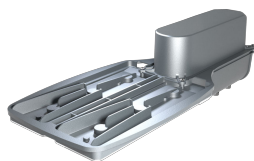
Application

- Road and Street
- Security Lighting
- Walkways

Versions



UrbanEdge 200W SPP



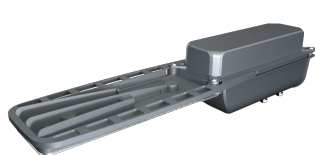
UrbanEdge 150W SPP



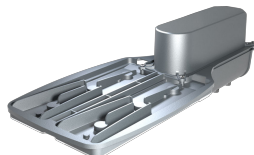
UrbanEdge 230W SPP



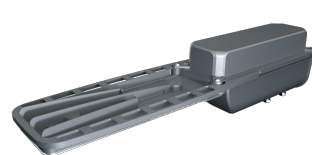
UrbanEdge 170W SPP



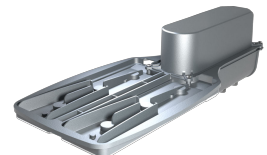
UrbanEdge 70W SPP



UrbanEdge 90W SPP

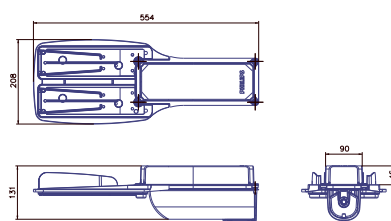
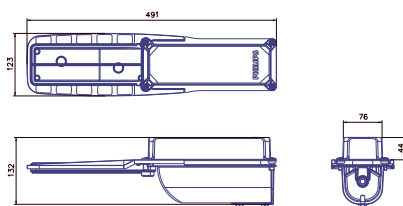


UrbanEdge 60W SPP

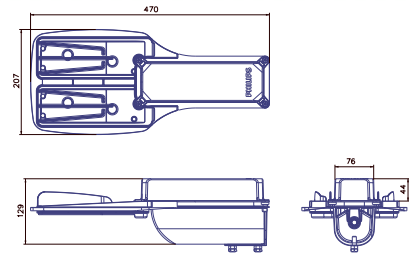
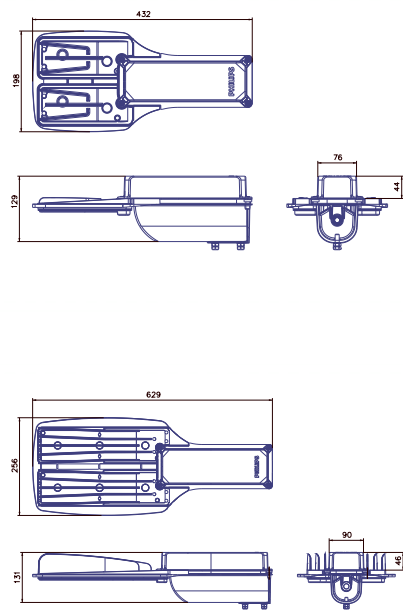


UrbanEdge 120W SPP

Dimensional drawing



Dimensional drawing



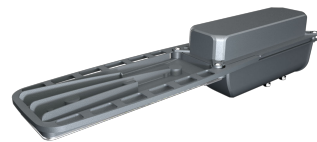
Product details



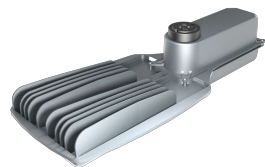
UrbanEdge 150W



UrbanEdge 230W



UrbanEdge 70W



UrbanEdge 230W NEMA

General Information	
Driver included	Yes
Light Technical	
Luminaire light beam spread	130° x 88°
Light source color	757 cool white
Correlated Color Temperature (Nom)	5700 K
Color rendering index (CRI)	>70
Luminous Efficacy (rated) (Nom)	140 lm/W
Optic type outdoor	Distribution Symmetric Wide
Operating and Electrical	
Surge Protection (Common/ Differential)	4/4 kV kV
Controls and Dimming	
Dimmable	No
Mechanical and Housing	
Optical cover type	Polycarbonate
Housing Color	Aluminum and gray
Mech. impact protection code	IK10
Ingress protection code	IP66
Approval and Application	
Ambient temperature range	-10 to +50 °C
Flammability mark	For mounting on normally flammable surfaces

Light Technical

Order Code	Full Product Name	Luminous Flux
919515815359	BRP505 LED280 CW R3C PSU S1	28,000 lm
919515815357	BRP504 LED210 CW R3C PSU S1	21,000 lm
919515815360	BRP505 LED322 CW R3C PSU S1	32,200 lm
919515815358	BRP505 LED238 CW R3C PSU S1	23,800 lm
919515815354	BRP501 LED098 CW R3C PSU S1	9,800 lm
919515815355	BRP502 LED126 CW R3C PSU S1	12,600 lm
919515815353	BRP501 LED084 CW R3C PSU S1	8,400 lm
919515815356	BRP503 LED168 CW R3C PSU S1	16,800 lm

Operating and Electrical

Order Code	Full Product Name	Power Consumption
919515815359	BRP505 LED280 CW R3C PSU S1	200 W
919515815357	BRP504 LED210 CW R3C PSU S1	150 W
919515815360	BRP505 LED322 CW R3C PSU S1	230 W
919515815358	BRP505 LED238 CW R3C PSU S1	170 W

Order Code	Full Product Name	Power Consumption
919515815354	BRP501 LED098 CW R3C PSU S1	70 W
919515815355	BRP502 LED126 CW R3C PSU S1	90 W
919515815353	BRP501 LED084 CW R3C PSU S1	60 W
919515815356	BRP503 LED168 CW R3C PSU S1	120 W

