



## Accent Track D90 – A classic and eco-friendly accent light

A classic and eco-friendly accent light with a customizable twist, the Accent Track D90 is designed to enhance your retail spaces with a diameter of 90mm. Featuring an integrated hinge and versatile features, this energy-efficient light offers outstanding performance. With glare accessories like Honeycomb, Barndoor and Snoot, you can achieve perfect visual comfort. Choose from a wide range of light recipes, beam angles, driver options, and textures. Available in 8 color options for the housing and front ring, it fits seamlessly into any setting. The spot contains printed parts made with at least 65% recycled polycarbonate and 85% recycled aluminum for the heatsink, making it not only stylish but also environmentally conscious. With high efficacy, this light is perfect for retail applications such as food retail, car showrooms, and electronic shops. Illuminate your space while reducing energy costs and CO<sub>2</sub> emissions with the Accent Track D90.

### Benefits

- Circular design
- Fulfills all accent lighting needs
- Consistent and best in class lighting technology
- Sustainably 3D printed
- Ultra Efficient

## Applications

- Retail
- Supermarkets
- Fashion Retail
- Offices

## Features

- Rich pallet of housing & front ring colors
- 2 Different Lengths
- Various Retail light recipes to choose from – 2700K-4000K, Premium White, Premium Color, Food and Meat Recipe

## Versions

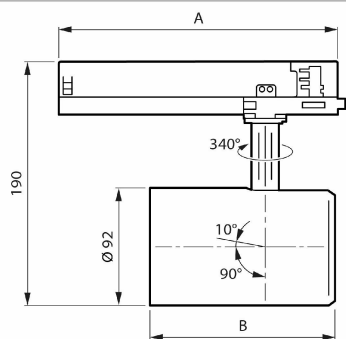


Accent Track D90-  
TCAT90-27S-PW930-PSU-  
MB-T102-WH481

- Wide range of beam angles to choose from
- Option for CRI80,CRI90
- Lumens : 2000 – 4900 Lumens
- Different Driver options – Non Dimming / DIA (Dali interact Dimming / DIA-VLC (DALI with Interact indoor navigation) / WIA (Wireless interact dimming)
- Glare accessories – Honeycomb, Barndoor, Snoot
- Lumen maintenance (EN-IEC 62722-2-1) at median useful life: 100,000hrs\* to L80 @ 25°C Ta

## Dimensional drawing

Trafo	Flux	CCT	Optic	A (mm)
PSU				158
	20S	840	HNB/HMB/HVVB/HVVVB/HOVL-H/HOVL-V	171
	49S	PW930	NB/MB/WB/VVVB/OVL-V	162
DIA				251
DIA-VLC			All	253
WIA				224



Flux	CCT	B (mm)
27S	FMT/Rose/FR	126
39S	FR/pc930	149
49S		

TCAT90 27S/PW930 PSU MB T102 WH481

## General Information

Number of gear units	1 unit
Driver included	Yes

## Light Technical

Luminous Flux	2,800 lm
Correlated Color Temperature (Nom)	3000 K
Luminous Efficacy (rated) (Nom)	133 lm/W
Color rendering index (CRI)	>90
Optic type	Beam angle 24°

## Operating and Electrical

Input Voltage	220 to 240 V
Line Frequency	50 Hz
Power Consumption	21 W
Suitable for random switching	Yes
Protection class IEC	Safety class I

## Controls and Dimming

Dimmable	No
----------	----

## Mechanical and Housing

Housing Color	White RAL 9003
Ingress protection code	IP20 [Finger-protected]
Mech. impact protection code	IK02 [0.2 J standard]

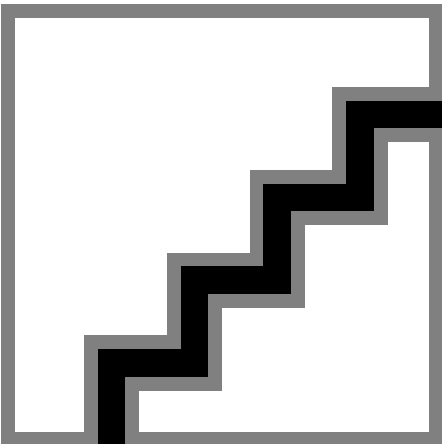
## Approval and Application

Glow-wire test	Temperature 650 °C, duration 30 s
Flammability mark	-
CE mark	Yes
ENEC mark	ENEC mark
Ambient temperature range	+10 to +35 °C

## Initial Performance (IEC Compliant)

Luminous flux tolerance	+/-10%
Initial chromaticity	(0.422, 0.386) SDCM <2

Polar normal diagrams



TCAT90I - 910771148203