



# The ultimate in retail flexibility and performance

## StyliD Evo

With StyliD Evo, retailers can enjoy the superior quality of light and market-leading energy efficiency of PerfectAccent optics in a series of flexible and future-proof projectors. StyliD Evo projectors are easy to reconfigure with quick and easy optic upgrades that require no tools. They also support frequent changes in store layouts, as the StyliD Evo projector can be easily repositioned on the track or Maxos fusion backbone. Covering a wide range of lighting applications, from lower light levels in convenience formats to high-ceiling installations where very high light output is required, StyliD offers continuity for every retail concept. StyliD Evo can be mounted on 3C or DALI track (ST770T, ST780T), on Maxos fusion (ST770S, ST780S, ST770X), or into the ceiling with a semi-recessed version (ST770B). All StyliD Evo projectors with PerfectAccent reflectors are certified as a circular lighting product and offer multiple system integration and dimming options, including wired as well as wireless. For prolonged shelf life and better visual representation of food, reducing food waste and increasing sales, fresh food LED lighting recipes are available. Check out our Fashion and Food catalog pages to find out more about PremiumWhite, PremiumColor, Fresh Meat, Rosé, Frost and Champagne.

### Benefits

- Attract shoppers with more sparkle and superior eye comfort
- Easy to reposition and upgrade for frequent store updates
- Best-in class efficacy to reduce carbon footprint and save on energy use
- Certified as circular lighting with PerfectAccent high-efficacy reflectors

## Features

- Easy optic replacement or upgrades that require no tools
- Available with PerfectAccent high-efficacy reflectors
- Optional front glass (advised in dusty environments)
- Up to 6000 lm output for high installation heights
- Available with fresh food LED lighting recipes and LED flavors
- Wired (DALI) and wireless connectivity options
- High intensity oval beam allows increased luminaire spacing when lighting fresh food counters or wordmarks on the wall

## Application

- Convenience stores
- Supermarkets & hypermarkets
- Large Retail formats

## Warnings and Safety

- All photometrical data is calculated without optional front glass. Flux should be reduced by 3.5% when using a front glass
- Cleaning of the optic should only be done with pressurized air. Touching the LED or reflector is forbidden. For food preparation areas and areas with high levels of dust, the use of the optional front glass is strongly advised, as it can be cleaned with a (dry) microfiber cloth.
- During maintenance, the product must be switched off and cooled down
- The product must be installed out of arm's reach. Manipulating the product when hot is only possible with an insulated glove

## Versions

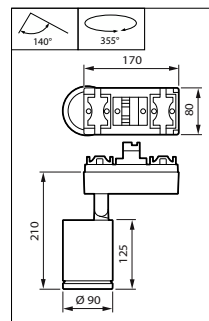
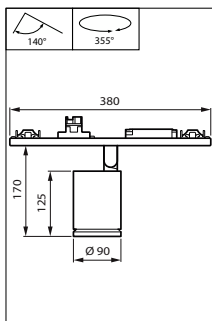
StyliD Evo Compact ST770X white,  
Maxos fusion integrated



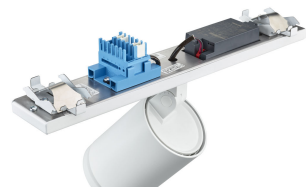
StyliD Evo Compact ST770S white,  
Maxos fusion version



## Dimensional drawing



Product details



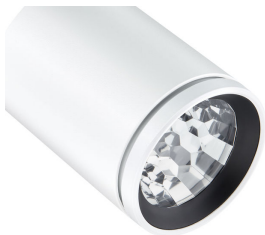
StyliD Evo Compact ST770X  
Mounting interface



Aiming indication, with marking for  
Indoor Positioning operation



StyliD Evo Compact white, side  
view



OptiShield protects the optical  
compartment from bugs and dust



StyliD Evo Compact in white, full  
rotation flexibility



StyliD Evo Compact white, front  
view



StyliD Evo Exploded View

General Information	
Driver included	Yes
Light source replaceable	No
Number of gear units	1 unit
Service tag	Yes
Light Technical	
Beam angle of light source	120 degree(s)
Correlated Color Temperature (Nom)	3000 K
Color rendering index (CRI)	>80
Luminous Efficacy (rated) (Nom)	144 lm/W
Luminous Flux	1,700 lm
Optic type	Medium beam
Operating and Electrical	
Input Voltage	220 to 240 V
Line Frequency	50 to 60 Hz
Power Consumption	11.8 W
Suitable for random switching	No
Mechanical and Housing	
Housing Color	White
Mech. impact protection code	IK02
Ingress protection code	IP20
Approval and Application	
Ambient temperature range	+10 to +35 °C
CE mark	Yes
ENEC mark	ENEC mark
Flammability mark	For mounting on normally flammable surfaces
Glow-wire test	Temperature 650 °C, duration 30 s
Flickering value (PstLM) - Flickering value as per EN 61000-3-3	1
Stroboscopic effect visibility measure (SVM)	0.5
Initial Performance (IEC Compliant)	
Initial chromaticity	(0.434,0.403)<3
Luminous flux tolerance	+/-10%

Operating and Electrical

Order Code	Full Product Name	Protection class IEC
910505101410	ST770X 17S/830 DIA MB FG WH	Safety class I
910505101229	ST770S 17S/830 PSU MB FG WH	Safety class II

Controls and Dimming

Order Code	Full Product Name	Dimmable	Maximum dim level
910505101410	ST770X 17S/830 DIA MB FG WH	Yes	1%

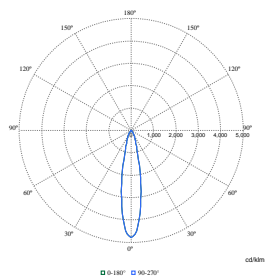
Order Code	Full Product Name	Dimmable	Maximum dim level
910505101229	ST770S 17S/830 PSU MB FG WH	No	Not applicable

Product Data

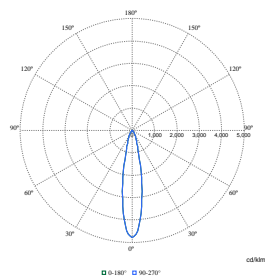
Order Code	Full Product Name	Product family code
910505101410	ST770X 17S/830 DIA MB FG WH	ST770X

Order Code	Full Product Name	Product family code
910505101229	ST770S 17S/830 PSU MB FG WH	ST770S

Polar Wide Diagrams



Polar Normal (separate) - ST770TI - 910505101410



Polar Normal (separate) - ST770TI - 910505101229

