



FlexBlend heading the way to efficient and flexible furnished offices areas

FlexBlend, Suspended

Philips FlexBlend is an attractive family of surface-mounted and suspended luminaires, next to Flexblend recessed. The luminaire range enables building owners to advance their lighting operations by offering office-compliant lighting with a return on investment of less than three to four years. FlexBlend provides the required flexibility through its design adaptability. This offers the possibility to install the luminaires easily while in the field. so, if today's luminaire is suspended, tomorrow it can be adapted to be a surface-mounted installation at the venue. And vice versa. The surface-mounted and suspended luminaire range fits into many different office spaces, like open plan areas, corridors, receptions or meeting rooms. FlexBlend is offered in both lines and as standalone, using the same lighting module. This gives the option to use FlexBlend as standalone now, and tomorrow, as a line light. The controller is integrated into the luminaire. As technology is changing fast, the ideal lighting solution is also expected to be ready to incorporate innovations that can help optimise operations further. For this reason, FlexBlend has all connectivity and future-ready options available. As a System Ready luminaire, it can be paired with lighting management systems such as Philips SpaceWise, and to software-based lighting systems such as Interact Office wired (PoE) and Interact Office wireless and/or existing and upcoming sensor innovations. The luminaire range is therefore future-ready and can be delivered without any system components, and in the next phase, in the field, to be upgraded. An attractive opportunity for new installations and renovations.

FlexBlend, Suspended

Benefits

- Return of investment less than three years
- A flexible office, with application flexibility to the choice of luminaires to fit many office areas
- Future ready: scalable and ready to be connected to controls and lighting systems

Features

- Fully office-compliant (UGR <19, L65< 3,000 cd/sm), light level according to office application requirements
- Homogenous and uniform light effect
- Various mounting options, dimensional variety and local options
- Integrated sensors
- Ready to be connected to software-based lighting systems, such as Interact Office

Application

- Offices
- Education
- Healthcare

Warnings and Safety

- The product is IPX0 & as such is not protected against water ingress and as such we strongly recommend that the environment in which the luminaire is to be installed is suitably checked
- If the above advice is not followed and the luminaires are subject to water ingress, Philips/Signify cannot guarantee safe use and the product warranty will become void

Versions

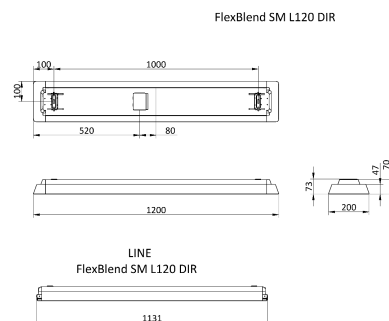
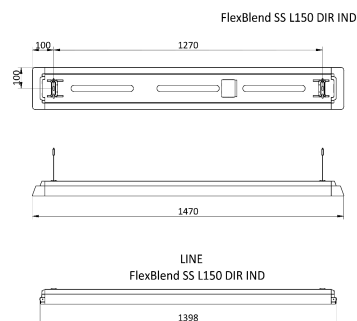


FlexBlend Suspended-SM340C-
MLO-WH-SENS1-L150



FlexBlend Suspended SP340P
MLO WH

Dimensional drawing



FlexBlend, Suspended

Product details



FlexBlend Suspended SP340P WH



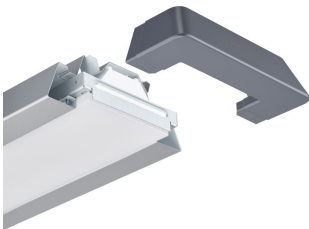
FlexBlend Suspended SP340P



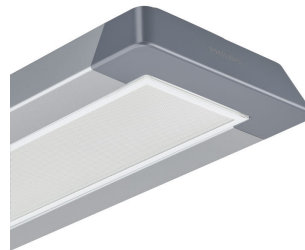
FlexBlend Suspended SP340P SI



FlexBlend Suspended SP340P PCS
WH



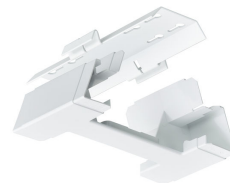
FlexBlend Suspended SP340P O SI



FlexBlend Suspended SP340P PCS
SI



FlexBlend Suspended SP340P SI



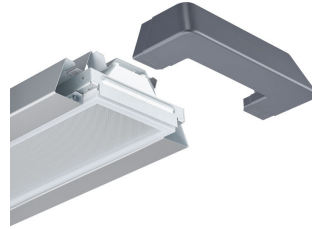
FlexBlend Suspended SP340P WH

FlexBlend, Suspended

Product details



FlexBlend_Suspended_SP340P-
line-MLO-WH-SWZU



FlexBlend Suspended SP340P
MLO SI



FlexBlend Surface Mounted
SM340C



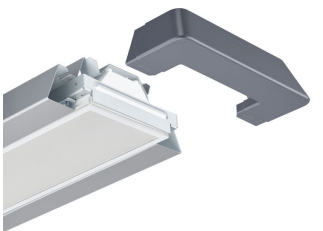
FlexBlend Suspended SP340P
MLO WH



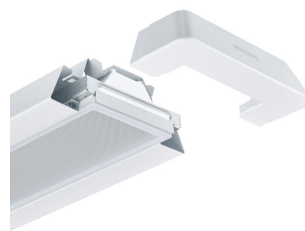
FlexBlend Suspended SP340P SI



FlexBlend Suspended SP340P WH



FlexBlend Suspended SP340P PCS
SI



FlexBlend Suspended SP340P
MLO WH

FlexBlend, Suspended

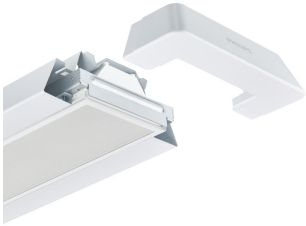
Product details



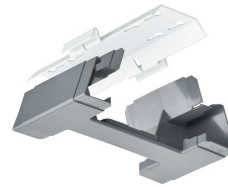
FlexBlend Suspended SP340P BK



FlexBlend Suspended SP340P SI



FlexBlend Suspended SP340P PCS
WH



FlexBlend Suspended SP340P SI

FlexBlend, Suspended

General Information

Driver included	Yes
Light source replaceable	No
Number of gear units	Unit
Service Tag	Yes

Light Technical

Colour rendering index (CRI)	>90
Optic type	Wide beam

Operating and Electrical

Protection class IEC	Safety class I
Input Voltage	220 to 240 V
Line Frequency	50 to 60 Hz

Controls and Dimming

Dimmable	Yes
Maximum dim level	1%

Mechanical and Housing

Mech. impact protection code	IK02
Ingress protection code	IP20

Emergency Operation

Central Emergency	Yes
Emergency lighting	DC operated central emergency lighting

Approval and Application

Ambient temperature range	+10 to +40 °C
CE mark	Yes
Flammability mark	For mounting on normally flammable surfaces
Flickering value (PstLM)	1
Stroboscopic effect	0.4

Initial Performance (IEC Compliant)

Luminous flux tolerance	+/-10%
-------------------------	--------

Light Technical

Order Code	Full Product Name	Beam angle of light source	Correlated Colour	Luminous	Luminous Flux
			Temperature (Nom)	efficacy (rated) (nom.)	
910925868894	SP340P 42S/930 SEIA PCS U4 SMT L120 WH	- degree(s)	3000 K	143 lm/W	4,200 lm
910925867105	SP342P 45S/940 DEIA PCS SMT L150 SI	120 degree(s)	4000 K	145 lm/W	4,500 lm
910925867941	SP342P 60S/940 DEIA PCS SMT L150 SI	120 degree(s)	4000 K	140 lm/W	6,000 lm
910925867960	SP343P 45S/940 DEIA PCS SMT L150 SI	120 degree(s)	4000 K	145 lm/W	4,500 lm
910925867129	SP340P 40S/940 DEIA MLO SMT L120 WH	120 degree(s)	4000 K	94 lm/W	4,000 lm

Operating and Electrical

Order Code	Full Product Name	Power Consumption	Suitable for random switching
910925868894	SP340P 42S/930 SEIA PCS U4 SMT L120 WH	27 W	No
910925867105	SP342P 45S/940 DEIA PCS SMT L150 SI	35 W	Yes (relates to presence/ movement detection and daylight harvesting)
910925867941	SP342P 60S/940 DEIA PCS SMT L150 SI	46.5 W	Yes (relates to presence/ movement detection and daylight harvesting)

Order Code	Full Product Name	Power Consumption	Suitable for random switching
910925867960	SP343P 45S/940 DEIA PCS SMT L150 SI	35 W	Yes (relates to presence/ movement detection and daylight harvesting)
910925867129	SP340P 40S/940 DEIA MLO SMT L120 WH	39 W	Yes (relates to presence/ movement detection and daylight harvesting)

FlexBlend, Suspended

Controls and Dimming

Order Code	Full Product Name	Embedded control
910925868894	SP340P 42S/930 SEIA PCS U4 SMT L120 WH	Upgradable sensor slot with SC200 sensor
910925867105	SP342P 45S/940 DEIA PCS SMT L150 SI	-

Order Code	Full Product Name	Embedded control
910925867941	SP342P 60S/940 DEIA PCS SMT L150 SI	-
910925867960	SP343P 45S/940 DEIA PCS SMT L150 SI	-
910925867129	SP340P 40S/940 DEIA MLO SMT L120 WH	-

Mechanical and Housing

Order Code	Full Product Name	Housing Colour
910925868894	SP340P 42S/930 SEIA PCS U4 SMT L120 WH	White
910925867105	SP342P 45S/940 DEIA PCS SMT L150 SI	Silver
910925867941	SP342P 60S/940 DEIA PCS SMT L150 SI	Silver

Order Code	Full Product Name	Housing Colour
910925867960	SP343P 45S/940 DEIA PCS SMT L150 SI	Silver
910925867129	SP340P 40S/940 DEIA MLO SMT L120 WH	White

Approval and Application

Order Code	Full Product Name	ENEC mark	Glow-wire test
910925868894	SP340P 42S/930 SEIA PCS U4 SMT L120 WH	ENEC mark	Temperature 850 °C, duration 30 s
910925867105	SP342P 45S/940 DEIA PCS SMT L150 SI	ENEC plus mark	Temperature 850 °C, duration 30 s
910925867941	SP342P 60S/940 DEIA PCS SMT L150 SI	ENEC plus mark	Temperature 850 °C, duration 30 s

Order Code	Full Product Name	ENEC mark	Glow-wire test
910925867960	SP343P 45S/940 DEIA PCS SMT L150 SI	ENEC plus mark	Temperature 850 °C, duration 30 s
910925867129	SP340P 40S/940 DEIA MLO SMT L120 WH	ENEC plus mark	Temperature 650 °C, duration 30 s

Initial Performance (IEC Compliant)

Order Code	Full Product Name	Initial chromaticity
910925868894	SP340P 42S/930 SEIA PCS U4 SMT L120 WH	0.43, 0.39
910925867105	SP342P 45S/940 DEIA PCS SMT L150 SI	(0.38, 0.38) SDCM <3
910925867941	SP342P 60S/940 DEIA PCS SMT L150 SI	(0.38, 0.38) SDCM <3

Order Code	Full Product Name	Initial chromaticity
910925867960	SP343P 45S/940 DEIA PCS SMT L150 SI	(0.38, 0.38) SDCM <3
910925867129	SP340P 40S/940 DEIA MLO SMT L120 WH	(0.38, 0.38) SDCM <3

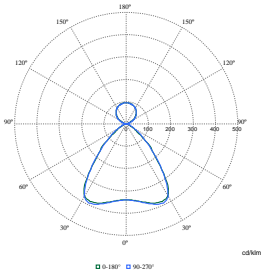
Product Data

Order Code	Full Product Name	Product family code
910925868894	SP340P 42S/930 SEIA PCS U4 SMT L120 WH	SP340P
910925867105	SP342P 45S/940 DEIA PCS SMT L150 SI	SP342P
910925867941	SP342P 60S/940 DEIA PCS SMT L150 SI	SP342P

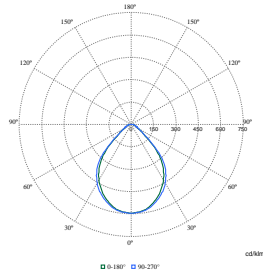
Order Code	Full Product Name	Product family code
910925867960	SP343P 45S/940 DEIA PCS SMT L150 SI	SP343P
910925867129	SP340P 40S/940 DEIA MLO SMT L120 WH	SP340P

FlexBlend, Suspended

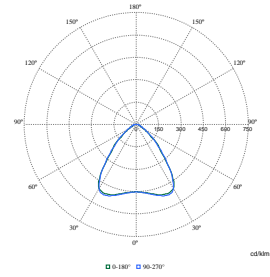
Polar Wide Diagrams



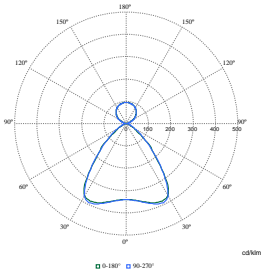
Polar Normal (separate) - SM340CI - 910925867105



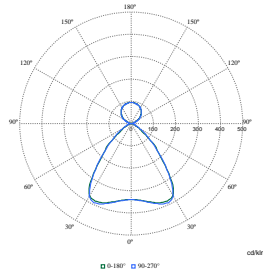
Polar Normal (separate) - SM340CI - 910925867129



Polar Normal (separate) - SM340CI - 910925868894



Polar Normal (separate) - SM340CI - 910925867941



Polar Normal (separate) - SM340CI - 910925867960

