



FlexBlend heading the way to efficient and flexible furnished offices areas

FlexBlend, Suspended

Philips FlexBlend is an attractive family of surface-mounted and suspended luminaires, next to FlexBlend recessed. The luminaire range is enabling building owners to advance their lighting operations, by offering office-compliant lighting with a return on investment of less than three to four years. FlexBlend provides the required flexibility through an adaptable design. This gives the possibility to install the luminaires easily in the field, at any moment. Even when the luminaire is suspended today, tomorrow it can be adapted to a surface-mounted installation on site. And vice versa. . The suspended and surface-mounted luminaire range fits many different office spaces like open plan offices, corridors, reception areas or meeting rooms. FlexBlend is offered in both lines and as standalone, using the same lighting module. This gives users the option to use FlexBlend as standalone today, and tomorrow, as a line. The controller is integrated in the luminaire. As technology is changing fast, the ideal lighting solution is also expected to be ready to incorporate innovations that can help optimise operations further. For this reason, FlexBlend has all connectivity and future-ready options available. As a System Ready luminaire, it can be paired with lighting management systems such as the Philips SpaceWise, and to software-based lighting systems such as Interact Office wired (PoE) and Interact Office wireless and/or existing and upcoming sensor innovations. The luminaire range is therefore future-ready and can be delivered without any system component, and in a next phase, in the field to be upgraded. An attractive opportunity for new installations and renovations.

FlexBlend, Suspended

Benefits

- Return of investment less than three to four years
- A flexible office, with a choice of luminaires to fit many office areas applications
- Future ready: scalable and ready to be connected to controls and lighting systems

Features

- Fully office-compliant (UGR <19, L65 < 3,000 cd/sm), light level according to office application requirements
- Homogenous and uniform light effect and CRI90
- Various mounting options, dimensional variety and 3 hour emergency versions
- Integrated sensors
- Ready to be connected to software-based lighting systems, such as Interact Office

Application

- Offices
- Education
- Healthcare

Warnings and Safety

- The product is IP20 & as such is not protected against water ingress and as such we strongly recommend that the environment in which the luminaire is to be installed is suitably checked
- If the above advice is not followed and the luminaires are subject to water ingress, Philips/Signify cannot guarantee safe use and the product warranty will become void

Versions



FlexBlend Suspended SP340P PCS WH



FlexBlend Suspended SP340P MLO BK

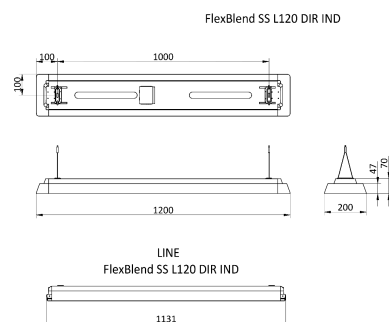
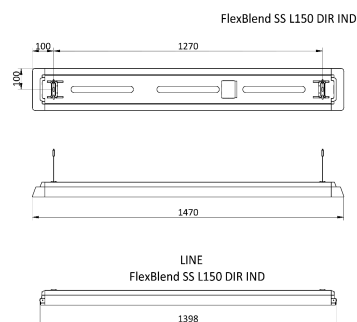


FlexBlend Suspended SP340P MLO SI



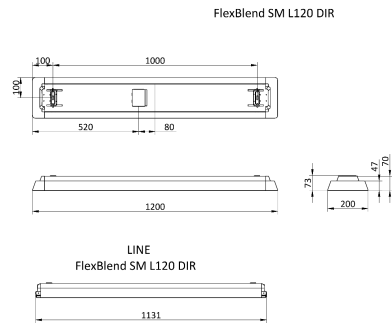
FlexBlend Suspended SP340P MLO WH

Dimensional drawing



FlexBlend, Suspended

Dimensional drawing



Product details



FlexBlend Suspended SP340P WH



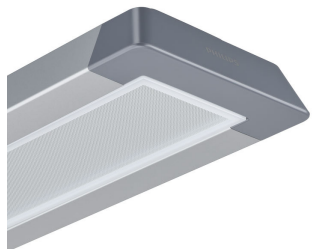
FlexBlend Suspended SP340P



FlexBlend Suspended SP340P O
BK



FlexBlend Suspended SP340P SI



FlexBlend Suspended SP340P
MLO SI

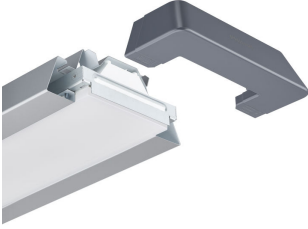


FlexBlend Suspended SP340P PCS
WH

FlexBlend, Suspended

Product details

FlexBlend Suspended SP340P O SI



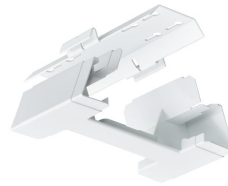
FlexBlend Suspended SP340P PCS BK



FlexBlend Suspended SP340P SI



FlexBlend Suspended SP340P WH



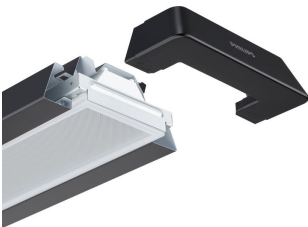
FlexBlend Suspended SP340P BK



FlexBlend_Suspended_SP340P-line-MLO-WH-SWZU



FlexBlend Suspended SP340P MLO BK



FlexBlend Suspended SP340P MLO BK

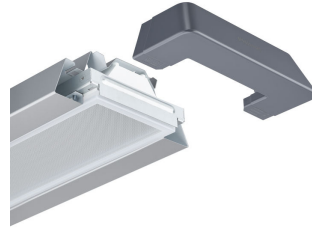


FlexBlend, Suspended

Product details



FlexBlend Suspended SP340P BK



FlexBlend Suspended SP340P
MLO SI



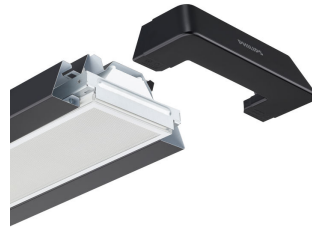
FlexBlend Surface Mounted
SM340C



FlexBlend Suspended SP340P
MLO WH



FlexBlend Suspended SP340P SI



FlexBlend Suspended SP340P PCS
BK



FlexBlend Suspended SP340P BK



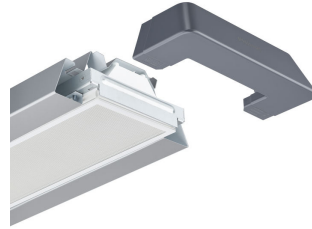
FlexBlend Suspended SP340P WH

FlexBlend, Suspended

Product details



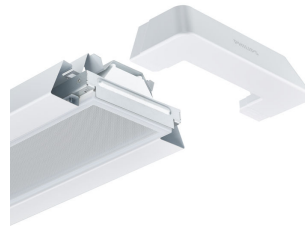
FlexBlend Suspended SP340P WH



FlexBlend Suspended SP340P PCS
SI



FlexBlend Suspended SP340P WH



FlexBlend Suspended SP340P
MLO WH



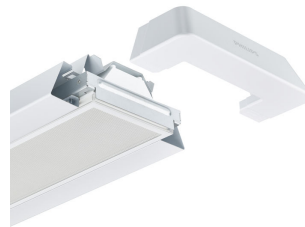
FlexBlend Suspended SP340P BK



FlexBlend Suspended SP340P SI



FlexBlend Suspended SP340P BK

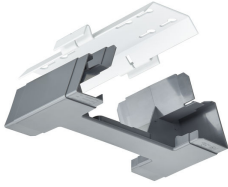


FlexBlend Suspended SP340P PCS
WH

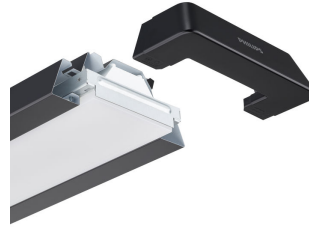
FlexBlend, Suspended

Product details

FlexBlend Suspended SP340P SI



FlexBlend Suspended SP340P O BK



General Information

| | |
|--------------------------|------|
| Driver included | Yes |
| Light source replaceable | No |
| Number of gear units | Unit |
| Service Tag | Yes |

Light Technical

| | |
|-------------------------------------|-----------|
| Correlated Colour Temperature (Nom) | 4000 K |
| Colour rendering index (CRI) | >90 |
| Optic type | Wide beam |

Operating and Electrical

| | |
|----------------------|----------------|
| Protection class IEC | Safety class I |
| Input Voltage | 220 to 240 V |
| Line Frequency | 50 to 60 Hz |

Controls and Dimming

| | |
|-------------------|-----|
| Dimmable | Yes |
| Maximum dim level | 1% |

Mechanical and Housing

| | |
|------------------------------|------|
| Mech. impact protection code | IK02 |
| Ingress protection code | IP20 |

Approval and Application

| | |
|---------------------------|---|
| Ambient temperature range | +10 to +40 °C |
| CE mark | Yes |
| Flammability mark | For mounting on normally flammable surfaces |
| Flickering value (PstLM) | 1 |
| Stroboscopic effect | 0.4 |

Initial Performance (IEC Compliant)

| | |
|-------------------------|--------|
| Luminous flux tolerance | +/-10% |
|-------------------------|--------|

Light Technical

| Order Code | Full Product Name | Beam angle of light source | Luminous efficacy (rated) (nom.) | Luminous Flux |
|--------------|--|----------------------------|----------------------------------|---------------|
| 910925867104 | SP342P 45S/940 DEIA PCS SMT L150 WH | 120 degree(s) | 145 lm/W | 4,500 lm |
| 910925867126 | SP340P 36S/940 DEIA PCS SMT L120 WH | 120 degree(s) | 138 lm/W | 3,600 lm |
| 910925867130 | SP342P 48S/940 DEIA PCS SMT L120 WH | 120 degree(s) | 141 lm/W | 4,800 lm |
| 910925867932 | SP342P 60S/940 DEIA PCS SMT L150 WH | 120 degree(s) | 140 lm/W | 6,000 lm |
| 910925868897 | SP342P 45S/940 SEIA MLO U4 SMT L150 WH | - degree(s) | 110 lm/W | 4,500 lm |
| 910925868908 | SP340P 36S/940 SEIA PCS U4 SMT L120 WH | - degree(s) | 138 lm/W | 3,600 lm |
| 910925867114 | SP342P 45S/940 DEIA MLO SMT L150 BK | 120 degree(s) | 112 lm/W | 4,500 lm |
| 910925867113 | SP342P 45S/940 DEIA MLO SMT L150 SI | 120 degree(s) | 112 lm/W | 4,500 lm |
| 910925867112 | SP342P 45S/940 DEIA MLO SMT L150 WH | 120 degree(s) | 112 lm/W | 4,500 lm |
| 910925867132 | SP342P 48S/940 DEIA MLO SMT L120 WH | 120 degree(s) | 109 lm/W | 4,800 lm |
| 910925867133 | SP342P 52S/940 DEIA MLO SMT L120 WH | 120 degree(s) | 108 lm/W | 5,200 lm |

Operating and Electrical

FlexBlend, Suspended

| Order Code | Full Product Name | Power Consumption | Suitable for random switching |
|--------------|--|-------------------|--|
| 910925867104 | SP342P 45S/940 DEIA PCS SMT L150 WH | 35 W | Yes (relates to presence/movement detection and daylight harvesting) |
| 910925867126 | SP340P 36S/940 DEIA PCS SMT L120 WH | 26.5 W | Yes (relates to presence/movement detection and daylight harvesting) |
| 910925867130 | SP342P 48S/940 DEIA PCS SMT L120 WH | 36 W | Yes (relates to presence/movement detection and daylight harvesting) |
| 910925867932 | SP342P 60S/940 DEIA PCS SMT L150 WH | 46.5 W | Yes (relates to presence/movement detection and daylight harvesting) |
| 910925868897 | SP342P 45S/940 SEIA MLO U4 SMT L150 WH | 42.5 W | No |
| 910925868908 | SP340P 36S/940 SEIA PCS U4 SMT L120 WH | 26 W | No |

| Order Code | Full Product Name | Power Consumption | Suitable for random switching |
|--------------|-------------------------------------|-------------------|--|
| 910925867114 | SP342P 45S/940 DEIA MLO SMT L150 BK | 42.5 W | Yes (relates to presence/movement detection and daylight harvesting) |
| 910925867113 | SP342P 45S/940 DEIA MLO SMT L150 SI | 42.5 W | Yes (relates to presence/movement detection and daylight harvesting) |
| 910925867112 | SP342P 45S/940 DEIA MLO SMT L150 WH | 42.5 W | Yes (relates to presence/movement detection and daylight harvesting) |
| 910925867132 | SP342P 48S/940 DEIA MLO SMT L120 WH | 44.5 W | Yes (relates to presence/movement detection and daylight harvesting) |
| 910925867133 | SP342P 52S/940 DEIA MLO SMT L120 WH | 48.5 W | Yes (relates to presence/movement detection and daylight harvesting) |

Controls and Dimming

| Order Code | Full Product Name | Embedded control |
|--------------|--|--|
| 910925867104 | SP342P 45S/940 DEIA PCS SMT L150 WH | - |
| 910925867126 | SP340P 36S/940 DEIA PCS SMT L120 WH | - |
| 910925867130 | SP342P 48S/940 DEIA PCS SMT L120 WH | - |
| 910925867932 | SP342P 60S/940 DEIA PCS SMT L150 WH | - |
| 910925868897 | SP342P 45S/940 SEIA MLO U4 SMT L150 WH | Upgradable sensor slot with SC200 sensor |
| 910925868908 | SP340P 36S/940 SEIA PCS U4 SMT L120 WH | Upgradable sensor slot with SC200 sensor |

| Order Code | Full Product Name | Embedded control |
|--------------|-------------------------------------|------------------|
| 910925867114 | SP342P 45S/940 DEIA MLO SMT L150 BK | - |
| 910925867113 | SP342P 45S/940 DEIA MLO SMT L150 SI | - |
| 910925867112 | SP342P 45S/940 DEIA MLO SMT L150 WH | - |
| 910925867132 | SP342P 48S/940 DEIA MLO SMT L120 WH | - |
| 910925867133 | SP342P 52S/940 DEIA MLO SMT L120 WH | - |

Mechanical and Housing

| Order Code | Full Product Name | Housing Colour |
|--------------|--|----------------|
| 910925867104 | SP342P 45S/940 DEIA PCS SMT L150 WH | White |
| 910925867126 | SP340P 36S/940 DEIA PCS SMT L120 WH | White |
| 910925867130 | SP342P 48S/940 DEIA PCS SMT L120 WH | White |
| 910925867932 | SP342P 60S/940 DEIA PCS SMT L150 WH | White |
| 910925868897 | SP342P 45S/940 SEIA MLO U4 SMT L150 WH | White |
| 910925868908 | SP340P 36S/940 SEIA PCS U4 SMT L120 WH | White |

| Order Code | Full Product Name | Housing Colour |
|--------------|-------------------------------------|----------------|
| 910925867114 | SP342P 45S/940 DEIA MLO SMT L150 BK | Black |
| 910925867113 | SP342P 45S/940 DEIA MLO SMT L150 SI | Silver |
| 910925867112 | SP342P 45S/940 DEIA MLO SMT L150 WH | White |
| 910925867132 | SP342P 48S/940 DEIA MLO SMT L120 WH | White |
| 910925867133 | SP342P 52S/940 DEIA MLO SMT L120 WH | White |

Approval and Application

| Order Code | Full Product Name | ENEC mark | Glow-wire test |
|--------------|-------------------------------------|----------------|-----------------------------------|
| 910925867104 | SP342P 45S/940 DEIA PCS SMT L150 WH | ENEC plus mark | Temperature 850 °C, duration 30 s |
| 910925867126 | SP340P 36S/940 DEIA PCS SMT L120 WH | ENEC plus mark | Temperature 850 °C, duration 30 s |
| 910925867130 | SP342P 48S/940 DEIA PCS SMT L120 WH | ENEC plus mark | Temperature 850 °C, duration 30 s |
| 910925867932 | SP342P 60S/940 DEIA PCS SMT L150 WH | ENEC plus mark | Temperature 850 °C, duration 30 s |

| Order Code | Full Product Name | ENEC mark | Glow-wire test |
|--------------|--|----------------|-----------------------------------|
| 910925868897 | SP342P 45S/940 SEIA MLO U4 SMT L150 WH | ENEC mark | Temperature 650 °C, duration 30 s |
| 910925868908 | SP340P 36S/940 SEIA PCS U4 SMT L120 WH | ENEC mark | Temperature 850 °C, duration 30 s |
| 910925867114 | SP342P 45S/940 DEIA MLO SMT L150 BK | ENEC plus mark | Temperature 650 °C, duration 30 s |
| 910925867113 | SP342P 45S/940 DEIA MLO SMT L150 SI | ENEC plus mark | Temperature 650 °C, duration 30 s |

FlexBlend, Suspended

| Order Code | Full Product Name | ENEC mark | Glow-wire test |
|--------------|-------------------------------------|----------------|-----------------------------------|
| 910925867112 | SP342P 45S/940 DEIA MLO SMT L150 WH | ENEC plus mark | Temperature 650 °C, duration 30 s |
| 910925867132 | SP342P 48S/940 DEIA MLO SMT L120 WH | ENEC plus mark | Temperature 650 °C, duration 30 s |

| Order Code | Full Product Name | ENEC mark | Glow-wire test |
|--------------|-------------------------------------|----------------|-----------------------------------|
| 910925867133 | SP342P 52S/940 DEIA MLO SMT L120 WH | ENEC plus mark | Temperature 650 °C, duration 30 s |

Initial Performance (IEC Compliant)

| Order Code | Full Product Name | Initial chromaticity |
|--------------|--|----------------------|
| 910925867104 | SP342P 45S/940 DEIA PCS SMT L150 WH | (0.38, 0.38) SDCM <3 |
| 910925867126 | SP340P 36S/940 DEIA PCS SMT L120 WH | (0.38, 0.38) SDCM <3 |
| 910925867130 | SP342P 48S/940 DEIA PCS SMT L120 WH | (0.38, 0.38) SDCM <3 |
| 910925867932 | SP342P 60S/940 DEIA PCS SMT L150 WH | (0.38, 0.38) SDCM <3 |
| 910925868897 | SP342P 45S/940 SEIA MLO U4 SMT L150 WH | 0.38,0.37 |
| 910925868908 | SP340P 36S/940 SEIA PCS U4 SMT L120 WH | 0.38,0.37 |

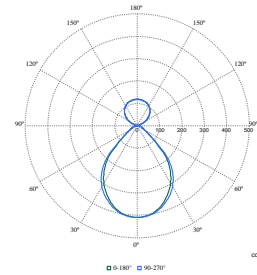
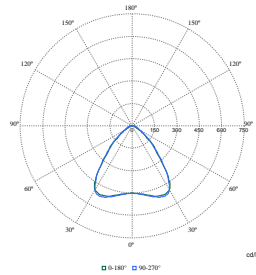
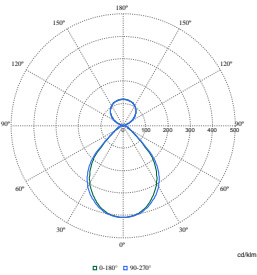
| Order Code | Full Product Name | Initial chromaticity |
|--------------|-------------------------------------|----------------------|
| 910925867114 | SP342P 45S/940 DEIA MLO SMT L150 BK | (0.38, 0.38) SDCM <3 |
| 910925867113 | SP342P 45S/940 DEIA MLO SMT L150 SI | (0.38, 0.38) SDCM <3 |
| 910925867112 | SP342P 45S/940 DEIA MLO SMT L150 WH | (0.38, 0.38) SDCM <3 |
| 910925867132 | SP342P 48S/940 DEIA MLO SMT L120 WH | (0.38, 0.38) SDCM <3 |
| 910925867133 | SP342P 52S/940 DEIA MLO SMT L120 WH | (0.38, 0.38) SDCM <3 |

Product Data

| Order Code | Full Product Name | Product family code |
|--------------|--|---------------------|
| 910925867104 | SP342P 45S/940 DEIA PCS SMT L150 WH | SP342P |
| 910925867126 | SP340P 36S/940 DEIA PCS SMT L120 WH | SP340P |
| 910925867130 | SP342P 48S/940 DEIA PCS SMT L120 WH | SP342P |
| 910925867932 | SP342P 60S/940 DEIA PCS SMT L150 WH | SP342P |
| 910925868897 | SP342P 45S/940 SEIA MLO U4 SMT L150 WH | SP342P |
| 910925868908 | SP340P 36S/940 SEIA PCS U4 SMT L120 WH | SP340P |

| Order Code | Full Product Name | Product family code |
|--------------|-------------------------------------|---------------------|
| 910925867114 | SP342P 45S/940 DEIA MLO SMT L150 BK | SP342P |
| 910925867113 | SP342P 45S/940 DEIA MLO SMT L150 SI | SP342P |
| 910925867112 | SP342P 45S/940 DEIA MLO SMT L150 WH | SP342P |
| 910925867132 | SP342P 48S/940 DEIA MLO SMT L120 WH | SP342P |
| 910925867133 | SP342P 52S/940 DEIA MLO SMT L120 WH | SP342P |

Polar Wide Diagrams

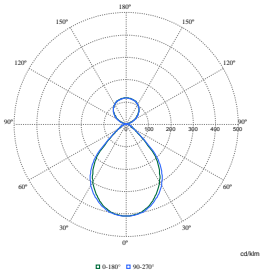


Polar Normal (separate) - SM340CI - 910925868897

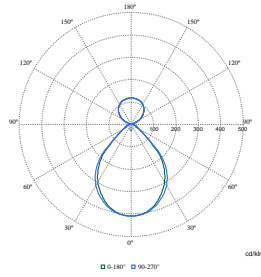
Polar Normal (separate) - SM340CI - 910925868908

Polar Normal (separate) - SM340CI - 910925867112

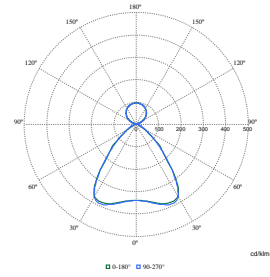
Polar Wide Diagrams



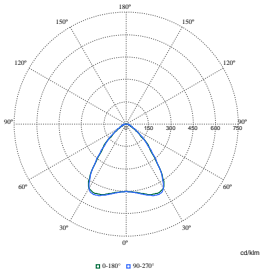
Polar Normal (separate) - SM340CI - 910925867113



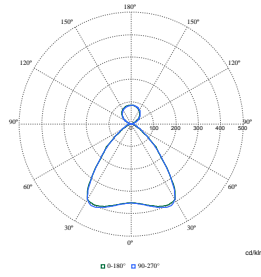
Polar Normal (separate) - SM340CI - 910925867114



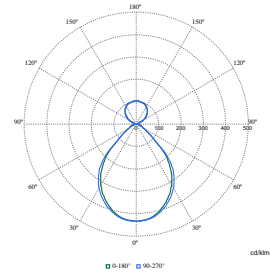
Polar Normal (separate) - SM340CI - 910925867104



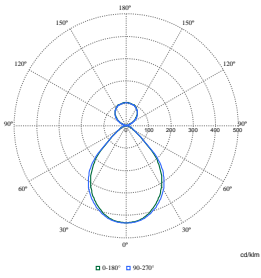
Polar Normal (separate) - SM340CI - 910925867126



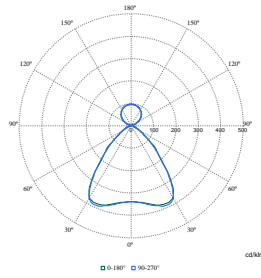
Polar Normal (separate) - SM340CI - 910925867130



Polar Normal (separate) - SM340CI - 910925867132



Polar Normal (separate) - SM340CI - 910925867133



Polar Normal (separate) - SM340CI - 910925867932

FlexBlend, Suspended

