



FlexBlend heading the way to efficient and flexible furnished offices areas

FlexBlend, Suspended

Philips FlexBlend is an attractive family of surface mounted and suspended luminaires, next to Flexblend recessed. The luminaire range is enabling building owners to advance their lighting operations, by offering office-compliant lighting with a return on investment of less than 3 to 4 years. FlexBlend provides the required flexibility through the adaptability in design. This gives the possibility to install the luminaires easily in the field, at any moment. Even when today's luminaire is suspended, tomorrow this can be adapted to a surface mounted installation at the venue. And the other way around. . The surface mounted and suspended luminaire range fit to many different office spaces like open plan office, corridors, reception or meeting rooms. FlexBlend is offered in both lines and as standalone, using the same lighting module. This gives the option to the users to use FlexBlend as standalone now, and tomorrow, as line. The controller is integrated in the luminaire. As technology is changing fast, the ideal lighting solution is also expected to be ready to incorporate innovations that can help optimize operations further. For this reason, FlexBlend holds all connectivity and future ready options available. As System Ready luminaire it can be paired with lighting management systems such as the Philips SpaceWise, and to software-based lighting systems as Interact Office wired (PoE) and Interact Office wireless and/or existing and upcoming sensor innovations. The luminaire range is therefore future ready and can be delivered without any system component, and in a next phase, in the field to be upgraded. An attractive opportunity for new installations and renovations.

FlexBlend, Suspended

Benefits

- Return of investment less than 3 years
- A flexible office, with application flexibility to the choice of luminaires to fit many office areas
- Future ready: scalable and ready to be connected to controls and lighting systems

Features

- Fully office compliant (UGR <19, L65< 3000cd/sm) , light level according to office applications requirements
- Homogenous and uniform light effect
- Various mounting options, dimensional variety and local options
- Integrated sensors
- Ready to be connected to software based lighting systems such as Interact Office

Application

- Offices
- Education
- Healthcare

Warnings and Safety

- The product is IPX0 & as such is not protected against water ingress & as such we strongly recommend that the environment in which the luminaire is to be installed is suitably checked
- If The above advice is not taken and the luminaires are subject to water ingress, Philips / Signify cannot guarantee safe failure & product warranty will become void

Versions

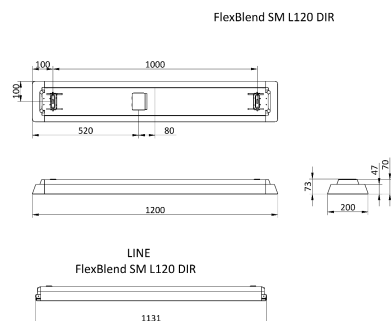


FlexBlend Suspended SP340P PCS
WH



FlexBlend Suspended-SM340C-
MLO-WH-SENS1-L150

Dimensional drawing



FlexBlend, Suspended

Product details



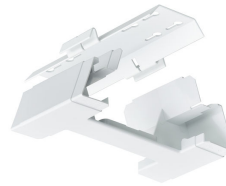
FlexBlend Suspended SP340P WH



FlexBlend Suspended SP340P PCS WH



FlexBlend Suspended SP340P SI



FlexBlend Suspended SP340P WH



FlexBlend_Suspended_SP340P-line-MLO-WH-SWZU



FlexBlend Surface Mounted SM340C



FlexBlend Suspended SP340P WH



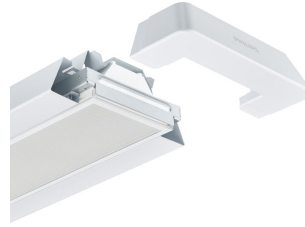
FlexBlend Suspended SP340P WH

FlexBlend, Suspended

Product details



FlexBlend Suspended SP340P BK



FlexBlend Suspended SP340P PCS
WH

FlexBlend, Suspended

General Information

| | |
|--------------------------|--------|
| Driver included | Yes |
| Light source replaceable | No |
| Number of gear units | 1 unit |
| Service tag | Yes |

Light Technical

| | |
|---------------------------------|-----------|
| Color rendering index (CRI) | >90 |
| Luminous Efficacy (rated) (Nom) | 143 lm/W |
| Luminous Flux | 4,200 lm |
| Optic type | Wide beam |

Operating and Electrical

| | |
|----------------------|----------------|
| Protection class IEC | Safety class I |
| Input Voltage | 220 to 240 V |
| Line Frequency | 50 to 60 Hz |

Controls and Dimming

| | |
|-------------------|-----|
| Dimmable | Yes |
| Maximum dim level | 1% |

Mechanical and Housing

| | |
|------------------------------|-------|
| Housing Color | White |
| Mech. impact protection code | IK02 |
| Ingress protection code | IP20 |

Approval and Application

| | |
|---|---|
| Ambient temperature range | +10 to +40 °C |
| CE mark | Yes |
| Flammability mark | For mounting on normally flammable surfaces |
| Glow-wire test | Temperature 850 °C, duration 30 s |
| Flickering value (PstLM) - Flickering value as per EN 61000-3-3 | 1 |
| Stroboscopic effect visibility measure (SVM) | 0.4 |

Initial Performance (IEC Compliant)

| | |
|-------------------------|--------|
| Luminous flux tolerance | +/-10% |
|-------------------------|--------|

Product Data

| | |
|---------------------|--------|
| Product family code | SP340P |
|---------------------|--------|

Light Technical

| Order Code | Full Product Name | Beam angle of light source | Correlated Color Temperature (Nom) |
|--------------|--|----------------------------|------------------------------------|
| 910925867127 | SP340P 42S/940 DEIA PCS SMT L120 WH | 120 degree(s) | 4000 K |
| 910925868894 | SP340P 42S/930 SEIA PCS U4 SMT L120 WH | - degree(s) | 3000 K |

Operating and Electrical

| Order Code | Full Product Name | Power Consumption | Suitable for random switching | Order Code | Full Product Name | Power Consumption | Suitable for random switching |
|--------------|-------------------------------------|-------------------|-------------------------------------|------------|-------------------|-------------------|------------------------------------|
| 910925867127 | SP340P 42S/940 DEIA PCS SMT L120 WH | 32 W | Yes (relates to presence/ movement) | | | | detection and daylight harvesting) |

FlexBlend, Suspended

| Order Code | Full Product Name | Power Consumption | Suitable for random switching |
|--------------|--|-------------------|-------------------------------|
| 910925868894 | SP340P 42S/930 SEIA PCS U4 SMT L120 WH | 27 W | No |

Controls and Dimming

| Order Code | Full Product Name | Embedded control |
|--------------|--|--|
| 910925867127 | SP340P 42S/940 DEIA PCS SMT L120 WH | - |
| 910925868894 | SP340P 42S/930 SEIA PCS U4 SMT L120 WH | Upgradable sensor slot with SC200 sensor |

Approval and Application

| Order Code | Full Product Name | ENEC mark |
|--------------|-------------------------------------|----------------|
| 910925867127 | SP340P 42S/940 DEIA PCS SMT L120 WH | ENEC plus mark |

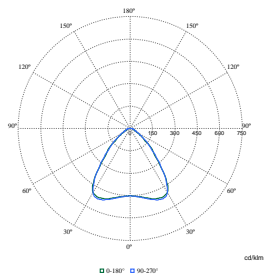
| Order Code | Full Product Name | ENEC mark |
|--------------|--|-----------|
| 910925868894 | SP340P 42S/930 SEIA PCS U4 SMT L120 WH | ENEC mark |

Initial Performance (IEC Compliant)

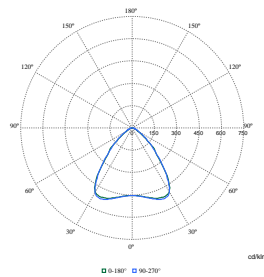
| Order Code | Full Product Name | Initial chromaticity |
|--------------|-------------------------------------|----------------------|
| 910925867127 | SP340P 42S/940 DEIA PCS SMT L120 WH | (0.38, 0.38) SDCM <3 |

| Order Code | Full Product Name | Initial chromaticity |
|--------------|--|----------------------|
| 910925868894 | SP340P 42S/930 SEIA PCS U4 SMT L120 WH | 0.43,0.39 |

Polar Wide Diagrams



Polar Normal (separate) - SM340CI - 910925867127



Polar Normal (separate) - SM340CI - 910925868894

