



# FlexBlend heading the way to efficient and flexible furnished offices areas

## FlexBlend, Suspended

Philips FlexBlend is an attractive family of surface mounted and suspended luminaires, next to Flexblend recessed. The luminaire range is enabling building owners to advance their lighting operations, by offering office-compliant lighting with a return on investment of less than 3 to 4 years. FlexBlend provides the required flexibility through the adaptability in design. This gives the possibility to install the luminaires easily in the field, at any moment. Even when today's luminaire is suspended, tomorrow this can be adapted to a surface mounted installation at the venue. And the other way around. The surface mounted and suspended luminaire range fit to many different office spaces like open plan office, corridors, reception or meeting rooms. FlexBlend is offered in both lines and as standalone, using the same lighting module. This gives the option to the users to use FlexBlend as standalone now, and tomorrow, as line. The controller is integrated in the luminaire. As technology is changing fast, the ideal lighting solution is also expected to be ready to incorporate innovations that can help optimize operations further. For this reason, FlexBlend holds all connectivity and future ready options available. As System Ready luminaire it can be paired with lighting management systems such as the Philips SpaceWise, and to software-based lighting systems as Interact Office wired (PoE) and Interact Office wireless and/or existing and upcoming sensor innovations. The luminaire range is therefore future ready and can be delivered without any system component, and in a next phase, in the field to be upgraded. An attractive opportunity for new installations and renovations.

# FlexBlend, Suspended

## Benefits

- Return of investment less than 3 years
- A flexible office, with application flexibility to the choice of luminaires to fit many office areas
- Future ready: scalable and ready to be connected to controls and lighting systems

## Features

- Fully office compliant (UGR <19, L65 < 3000cd/sm), light level according to office applications requirements
- Homogenous and uniform light effect
- Various mounting options, dimensional variety and local options
- Integrated sensors
- Ready to be connected to software based lighting systems such as Interact Office

## Application

- Offices
- Education
- Healthcare

## Warnings and Safety

- The product is IPX0 & as such is not protected against water ingress & as such we strongly recommend that the environment in which the luminaire is to be installed is suitably checked
- If The above advice is not taken and the luminaires are subject to water ingress, Philips / Signify cannot guarantee safe failure & product warranty will become void

## Versions

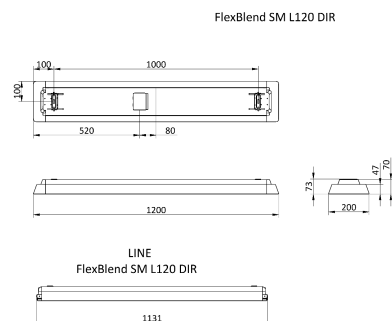


FlexBlend Suspended SP340P PCS  
WH



FlexBlend Suspended-SM340C-  
MLO-WH-SENS1-L150

## Dimensional drawing



FlexBlend, Suspended

Product details



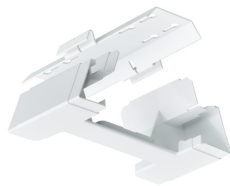
FlexBlend Suspended SP340P WH



FlexBlend Suspended SP340P PCS  
WH



FlexBlend Suspended SP340P SI



FlexBlend Suspended SP340P WH



FlexBlend\_Suspended\_SP340P-  
line-MLO-WH-SWZU



FlexBlend Surface Mounted  
SM340C



FlexBlend Suspended SP340P WH



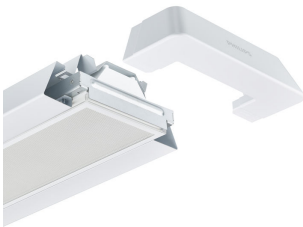
FlexBlend Suspended SP340P WH

FlexBlend, Suspended

Product details



FlexBlend Suspended SP340P BK



FlexBlend Suspended SP340P PCS  
WH

FlexBlend, Suspended

General Information	
Driver included	Yes
Light source replaceable	No
Number of gear units	1 unit
Service tag	Yes
Light Technical	
Color rendering index (CRI)	>90
Luminous Efficacy (rated) (Nom)	143 lm/W
Luminous Flux	4,200 lm
Optic type	Wide beam
Operating and Electrical	
Protection class IEC	Safety class I
Input Voltage	220 to 240 V
Line Frequency	50 to 60 Hz
Controls and Dimming	
Dimmable	Yes
Maximum dim level	1%
Mechanical and Housing	
Housing Color	White
Mech. impact protection code	IK02
Ingress protection code	IP20
Approval and Application	
Ambient temperature range	+10 to +40 °C
CE mark	Yes
Flammability mark	For mounting on normally flammable surfaces
Glow-wire test	Temperature 850 °C, duration 30 s
Flickering value (PstLM) - Flickering value as per EN 61000-3-3	1
Stroboscopic effect visibility measure (SVM)	0.4
Initial Performance (IEC Compliant)	
Luminous flux tolerance	+/-10%
Product Data	
Product family code	SP340P

Light Technical

Order Code	Full Product Name	Beam angle of light source	Correlated Color Temperature (Nom)
910925867127	SP340P 42S/940 PSD PCS SMT L120 WH	120 degree(s)	4000 K
910925868894	SP340P 42S/930 SRD PCS U4 SMT L120 WH	- degree(s)	3000 K

Operating and Electrical

Order Code	Full Product Name	Power Consumption	Suitable for random switching	Order Code	Full Product Name	Power Consumption	Suitable for random switching
910925867127	SP340P 42S/940 PSD PCS SMT L120 WH	32 W	Yes (relates to presence/ movement				detection and daylight harvesting)

FlexBlend, Suspended

Order Code	Full Product Name	Power Consumption	Suitable for random switching
910925868894	SP340P 42S/930 SRD PCS U4 SMT L120 WH	27 W	No

Controls and Dimming

Order Code	Full Product Name	Embedded control
910925867127	SP340P 42S/940 PSD PCS SMT L120 WH	-
910925868894	SP340P 42S/930 SRD PCS U4 SMT L120 WH	Upgradable sensor slot with SNS210 sensor

Approval and Application

Order Code	Full Product Name	ENEC mark
910925867127	SP340P 42S/940 PSD PCS SMT L120 WH	ENEC plus mark

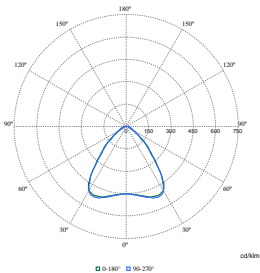
Order Code	Full Product Name	ENEC mark
910925868894	SP340P 42S/930 SRD PCS U4 SMT L120 WH	ENEC mark

Initial Performance (IEC Compliant)

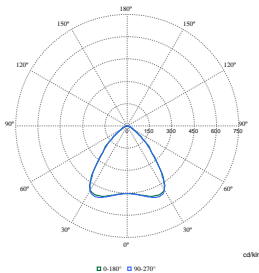
Order Code	Full Product Name	Initial chromaticity
910925867127	SP340P 42S/940 PSD PCS SMT L120 WH	(0.43, 0.40) SDCM <3

Order Code	Full Product Name	Initial chromaticity
910925868894	SP340P 42S/930 SRD PCS U4 SMT L120 WH	0.43,0.39

Polar Wide Diagrams



Polar Normal (separate) - SM340CI - 910925867127



Polar Normal (separate) - SM340CI - 910925868894

