



FlexBlend heading the way to efficient and flexible furnished offices areas

FlexBlend, Suspended

Philips FlexBlend is an attractive family of surface mounted and suspended luminaires, next to Flexblend recessed. The luminaire range is enabling building owners to advance their lighting operations, by offering office-compliant lighting with a return on investment of less than 3 to 4 years. FlexBlend provides the required flexibility through the adaptability in design. This gives the possibility to install the luminaires easily in the field, at any moment. Even when today's luminaire is suspended, tomorrow this can be adapted to a surface mounted installation at the venue. And the other way around. The surface mounted and suspended luminaire range fit to many different office spaces like open plan office, corridors, reception or meeting rooms. FlexBlend is offered in both lines and as standalone, using the same lighting module. This gives the option to the users to use FlexBlend as standalone now, and tomorrow, as line. The controller is integrated in the luminaire. As technology is changing fast, the ideal lighting solution is also expected to be ready to incorporate innovations that can help optimize operations further. For this reason, FlexBlend holds all connectivity and future ready options available. As System Ready luminaire it can be paired with lighting management systems such as the Philips SpaceWise, and to software-based lighting systems as Interact Office wired (PoE) and Interact Office wireless and/or existing and upcoming sensor innovations. The luminaire range is therefore future ready and can be delivered without any system component, and in a next phase, in the field to be upgraded. An attractive opportunity for new installations and renovations.

FlexBlend, Suspended

Benefits

- Return of investment less than 3 years
- A flexible office, with application flexibility to the choice of luminaires to fit many office areas
- Future ready: scalable and ready to be connected to controls and lighting systems

Features

- Fully office compliant (UGR <19, L65< 3000cd/sm) , light level according to office applications requirements
- Homogenous and uniform light effect
- Various mounting options, dimensional variety and local options
- Integrated sensors
- Ready to be connected to software based lighting systems such as Interact Office

Application

- Offices
- Education
- Healthcare

Warnings and Safety

- The product is IPX0 & as such is not protected against water ingress & as such we strongly recommend that the environment in which the luminaire is to be installed is suitably checked
- If The above advice is not taken and the luminaires are subject to water ingress, Philips / Signify cannot guarantee safe failure & product warranty will become void

Versions



FlexBlend Suspended SP340P PCS BK



FlexBlend Suspended SP340P MLO BK



FlexBlend Suspended SP340P PCS SI



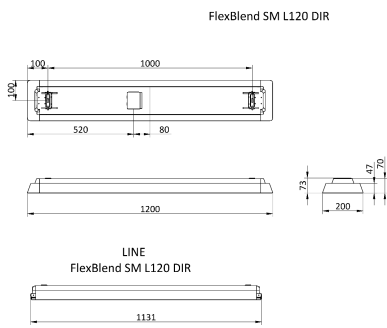
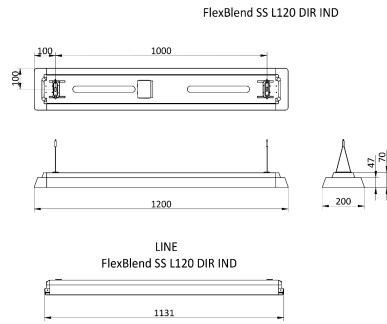
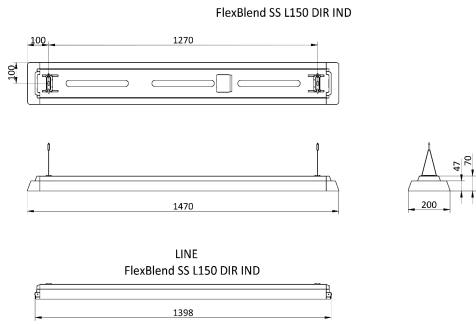
FlexBlend Suspended SP340P MLO SI



FlexBlend Suspended SP340P O BK

FlexBlend, Suspended

Dimensional drawing



Product details



FlexBlend Suspended SP340P WH



FlexBlend Suspended SP340P



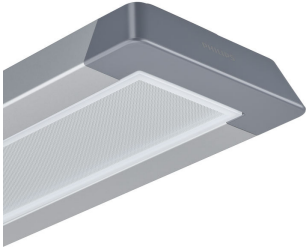
FlexBlend Suspended SP340P O
BK



FlexBlend Suspended SP340P SI

FlexBlend, Suspended

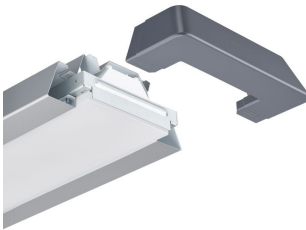
Product details



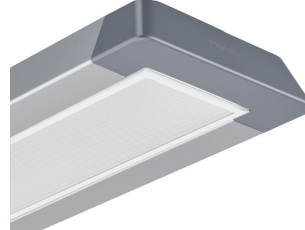
FlexBlend Suspended SP340P
MLO SI



FlexBlend Suspended SP340P PCS
WH



FlexBlend Suspended SP340P O SI



FlexBlend Suspended SP340P PCS
SI



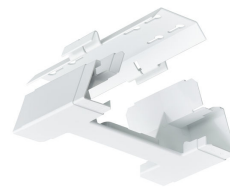
FlexBlend Suspended SP340P PCS
BK



FlexBlend Suspended SP340P SI



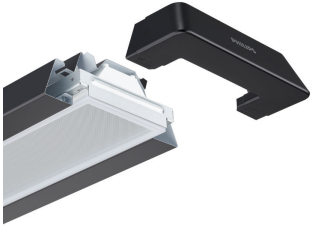
FlexBlend Suspended SP340P BK



FlexBlend Suspended SP340P WH

FlexBlend, Suspended

Product details



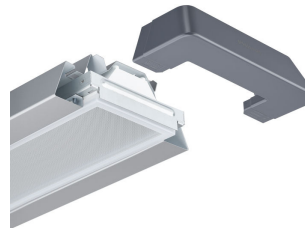
FlexBlend Suspended SP340P
MLO BK



FlexBlend Suspended SP340P
MLO BK



FlexBlend Suspended SP340P BK



FlexBlend Suspended SP340P
MLO SI



FlexBlend Surface Mounted
SM340C



FlexBlend Suspended SP340P O
WH



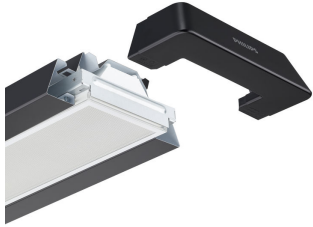
FlexBlend Suspended SP340P
MLO WH



FlexBlend Suspended SP340P SI

FlexBlend, Suspended

Product details



FlexBlend Suspended SP340P PCS
BK



FlexBlend Suspended SP340P BK



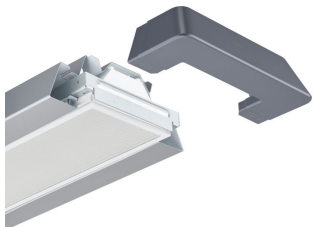
FlexBlend Suspended SP340P O
WH



FlexBlend Suspended SP340P WH



FlexBlend Suspended SP340P WH



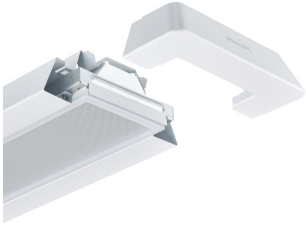
FlexBlend Suspended SP340P PCS
SI



FlexBlend Suspended SP340P WH

FlexBlend, Suspended

Product details



FlexBlend Suspended SP340P
MLO WH



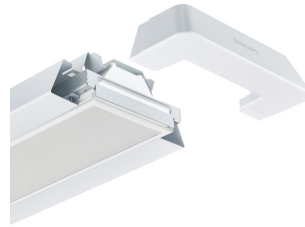
FlexBlend Suspended SP340P BK



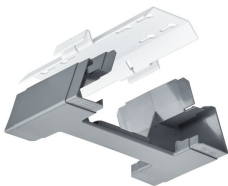
FlexBlend Suspended SP340P SI



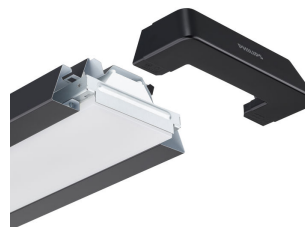
FlexBlend Suspended SP340P BK



FlexBlend Suspended SP340P PCS
WH



FlexBlend Suspended SP340P SI



FlexBlend Suspended SP340P O
BK

FlexBlend, Suspended

General Information

| | |
|--------------------------|--------|
| Driver included | Yes |
| Light source replaceable | No |
| Number of gear units | 1 unit |
| Service tag | Yes |

Light Technical

| | |
|-----------------------------|---------------|
| Beam angle of light source | 120 degree(s) |
| Color rendering index (CRI) | >90 |
| Optic type | Wide beam |

Operating and Electrical

| | |
|-------------------------------|--|
| Protection class IEC | Safety class I |
| Input Voltage | 220 to 240 V |
| Line Frequency | 50 to 60 Hz |
| Suitable for random switching | Yes (relates to presence/movement detection and daylight harvesting) |

Controls and Dimming

| | |
|-------------------|-----|
| Dimmable | Yes |
| Maximum dim level | 1% |

Mechanical and Housing

| | |
|------------------------------|------|
| Mech. impact protection code | IK02 |
| Ingress protection code | IP20 |

Approval and Application

| | |
|---|---|
| Ambient temperature range | +10 to +40 °C |
| CE mark | Yes |
| ENEC mark | ENEC plus mark |
| Flammability mark | For mounting on normally flammable surfaces |
| Flickering value (PstLM) - Flickering value as per EN 61000-3-3 | 1 |
| Stroboscopic effect visibility measure (SVM) | 0.4 |

Initial Performance (IEC Compliant)

| | |
|-------------------------|--------|
| Luminous flux tolerance | +/-10% |
|-------------------------|--------|

Light Technical

| Order Code | Full Product Name | Correlated Color Temperature (Nom) | Luminous Efficacy (rated) (Nom) | Luminous Flux |
|------------|-------------------------------------|------------------------------------|---------------------------------|---------------|
| 10378800 | SP342P 45S/940 DEIA O SMT L150 WH | 4000 K | 136 lm/W | 4,500 lm |
| 18286800 | SP342P 36S/940 DEIA O SMT L120 WH | 4000 K | 128 lm/W | 3,600 lm |
| 10367200 | SP342P 45S/940 DEIA PCS SMT L150 BK | 4000 K | 145 lm/W | 4,500 lm |
| 10365800 | SP342P 45S/940 DEIA PCS SMT L150 WH | 4000 K | 145 lm/W | 4,500 lm |
| 10387000 | SP340P 36S/940 DEIA PCS SMT L120 WH | 4000 K | 138 lm/W | 3,600 lm |
| 10388700 | SP340P 42S/940 DEIA PCS SMT L120 WH | 4000 K | 143 lm/W | 4,200 lm |
| 10391700 | SP342P 48S/940 DEIA PCS SMT L120 WH | 4000 K | 141 lm/W | 4,800 lm |
| 18294300 | SP342P 60S/940 DEIA PCS SMT L150 WH | 4000 K | 140 lm/W | 6,000 lm |
| 18295000 | SP342P 70S/940 DEIA PCS SMT L150 WH | 4000 K | 137 lm/W | 7,000 lm |
| 18299800 | SP342P 60S/930 DEIA PCS SMT L150 WH | 3000 K | 140 lm/W | 6,000 lm |
| 18316200 | SP343P 35S/940 DEIA PCS SMT L150 WH | 4000 K | 140 lm/W | 3,500 lm |
| 10375700 | SP342P 45S/940 DEIA MLO SMT L150 BK | 4000 K | 112 lm/W | 4,500 lm |
| 10366500 | SP342P 45S/940 DEIA PCS SMT L150 SI | 4000 K | 145 lm/W | 4,500 lm |
| 10374000 | SP342P 45S/940 DEIA MLO SMT L150 SI | 4000 K | 112 lm/W | 4,500 lm |
| 10373300 | SP342P 45S/940 DEIA MLO SMT L150 WH | 4000 K | 112 lm/W | 4,500 lm |
| 10389400 | SP340P 36S/940 DEIA MLO SMT L120 WH | 4000 K | 95 lm/W | 3,600 lm |
| 10390000 | SP340P 40S/940 DEIA MLO SMT L120 WH | 4000 K | 94 lm/W | 4,000 lm |
| 10393100 | SP342P 48S/940 DEIA MLO SMT L120 WH | 4000 K | 109 lm/W | 4,800 lm |
| 10394800 | SP342P 52S/940 DEIA MLO SMT L120 WH | 4000 K | 108 lm/W | 5,200 lm |
| 18307000 | SP342P 45S/940 DEIA O SMT L150 BK | 4000 K | 136 lm/W | 4,500 lm |

Operating and Electrical

| Order Code | Full Product Name | Power Consumption | Order Code | Full Product Name | Power Consumption |
|------------|-------------------------------------|-------------------|------------|-------------------------------------|-------------------|
| 10378800 | SP342P 45S/940 DEIA O SMT L150 WH | 37.5 W | 10387000 | SP340P 36S/940 DEIA PCS SMT L120 WH | 26.5 W |
| 18286800 | SP342P 36S/940 DEIA O SMT L120 WH | 29 W | 10388700 | SP340P 42S/940 DEIA PCS SMT L120 WH | 32 W |
| 10367200 | SP342P 45S/940 DEIA PCS SMT L150 BK | 35 W | 10391700 | SP342P 48S/940 DEIA PCS SMT L120 WH | 36 W |
| 10365800 | SP342P 45S/940 DEIA PCS SMT L150 WH | 35 W | 18294300 | SP342P 60S/940 DEIA PCS SMT L150 WH | 46.5 W |

FlexBlend, Suspended

| Order Code | Full Product Name | Power Consumption |
|------------|-------------------------------------|-------------------|
| 18295000 | SP342P 70S/940 DEIA PCS SMT L150 WH | 52 W |
| 18299800 | SP342P 60S/930 DEIA PCS SMT L150 WH | 49.5 W |
| 18316200 | SP343P 35S/940 DEIA PCS SMT L150 WH | 27.5 W |
| 10375700 | SP342P 45S/940 DEIA MLO SMT L150 BK | 42.5 W |
| 10366500 | SP342P 45S/940 DEIA PCS SMT L150 SI | 35 W |
| 10374000 | SP342P 45S/940 DEIA MLO SMT L150 SI | 42.5 W |

| Order Code | Full Product Name | Power Consumption |
|------------|-------------------------------------|-------------------|
| 10373300 | SP342P 45S/940 DEIA MLO SMT L150 WH | 42.5 W |
| 10389400 | SP340P 36S/940 DEIA MLO SMT L120 WH | 35 W |
| 10390000 | SP340P 40S/940 DEIA MLO SMT L120 WH | 39 W |
| 10393100 | SP342P 48S/940 DEIA MLO SMT L120 WH | 44.5 W |
| 10394800 | SP342P 52S/940 DEIA MLO SMT L120 WH | 48.5 W |
| 18307000 | SP342P 45S/940 DEIA O SMT L150 BK | 37.5 W |

Mechanical and Housing

| Order Code | Full Product Name | Housing Color |
|------------|-------------------------------------|---------------|
| 10378800 | SP342P 45S/940 DEIA O SMT L150 WH | White |
| 18286800 | SP342P 36S/940 DEIA O SMT L120 WH | White |
| 10367200 | SP342P 45S/940 DEIA PCS SMT L150 BK | Black |
| 10365800 | SP342P 45S/940 DEIA PCS SMT L150 WH | White |
| 10387000 | SP340P 36S/940 DEIA PCS SMT L120 WH | White |
| 10388700 | SP340P 42S/940 DEIA PCS SMT L120 WH | White |
| 10391700 | SP342P 48S/940 DEIA PCS SMT L120 WH | White |
| 18294300 | SP342P 60S/940 DEIA PCS SMT L150 WH | White |
| 18295000 | SP342P 70S/940 DEIA PCS SMT L150 WH | White |
| 18299800 | SP342P 60S/930 DEIA PCS SMT L150 WH | White |

| Order Code | Full Product Name | Housing Color |
|------------|-------------------------------------|---------------|
| 18316200 | SP343P 35S/940 DEIA PCS SMT L150 WH | White |
| 10375700 | SP342P 45S/940 DEIA MLO SMT L150 BK | Black |
| 10366500 | SP342P 45S/940 DEIA PCS SMT L150 SI | Silver |
| 10374000 | SP342P 45S/940 DEIA MLO SMT L150 SI | Silver |
| 10373300 | SP342P 45S/940 DEIA MLO SMT L150 WH | White |
| 10389400 | SP340P 36S/940 DEIA MLO SMT L120 WH | White |
| 10390000 | SP340P 40S/940 DEIA MLO SMT L120 WH | White |
| 10393100 | SP342P 48S/940 DEIA MLO SMT L120 WH | White |
| 10394800 | SP342P 52S/940 DEIA MLO SMT L120 WH | White |
| 18307000 | SP342P 45S/940 DEIA O SMT L150 BK | Black |

Approval and Application

| Order Code | Full Product Name | Glow-wire test |
|------------|-------------------------------------|-----------------------------------|
| 10378800 | SP342P 45S/940 DEIA O SMT L150 WH | Temperature 850 °C, duration 30 s |
| 18286800 | SP342P 36S/940 DEIA O SMT L120 WH | Temperature 850 °C, duration 30 s |
| 10367200 | SP342P 45S/940 DEIA PCS SMT L150 BK | Temperature 850 °C, duration 30 s |
| 10365800 | SP342P 45S/940 DEIA PCS SMT L150 WH | Temperature 850 °C, duration 30 s |
| 10387000 | SP340P 36S/940 DEIA PCS SMT L120 WH | Temperature 850 °C, duration 30 s |
| 10388700 | SP340P 42S/940 DEIA PCS SMT L120 WH | Temperature 850 °C, duration 30 s |
| 10391700 | SP342P 48S/940 DEIA PCS SMT L120 WH | Temperature 850 °C, duration 30 s |
| 18294300 | SP342P 60S/940 DEIA PCS SMT L150 WH | Temperature 850 °C, duration 30 s |
| 18295000 | SP342P 70S/940 DEIA PCS SMT L150 WH | Temperature 850 °C, duration 30 s |
| 18299800 | SP342P 60S/930 DEIA PCS SMT L150 WH | Temperature 850 °C, duration 30 s |
| 18316200 | SP343P 35S/940 DEIA PCS SMT L150 WH | Temperature 850 °C, duration 30 s |

| Order Code | Full Product Name | Glow-wire test |
|------------|-------------------------------------|-----------------------------------|
| 10375700 | SP342P 45S/940 DEIA MLO SMT L150 BK | Temperature 650 °C, duration 30 s |
| 10366500 | SP342P 45S/940 DEIA PCS SMT L150 SI | Temperature 850 °C, duration 30 s |
| 10374000 | SP342P 45S/940 DEIA MLO SMT L150 SI | Temperature 650 °C, duration 30 s |
| 10373300 | SP342P 45S/940 DEIA MLO SMT L150 WH | Temperature 650 °C, duration 30 s |
| 10389400 | SP340P 36S/940 DEIA MLO SMT L120 WH | Temperature 650 °C, duration 30 s |
| 10390000 | SP340P 40S/940 DEIA MLO SMT L120 WH | Temperature 650 °C, duration 30 s |
| 10393100 | SP342P 48S/940 DEIA MLO SMT L120 WH | Temperature 650 °C, duration 30 s |
| 10394800 | SP342P 52S/940 DEIA MLO SMT L120 WH | Temperature 650 °C, duration 30 s |
| 18307000 | SP342P 45S/940 DEIA O SMT L150 BK | Temperature 850 °C, duration 30 s |

Initial Performance (IEC Compliant)

| Order Code | Full Product Name | Initial chromaticity |
|------------|-------------------------------------|----------------------|
| 10378800 | SP342P 45S/940 DEIA O SMT L150 WH | (0.38, 0.38) SDCM <3 |
| 18286800 | SP342P 36S/940 DEIA O SMT L120 WH | (0.38, 0.38) SDCM <3 |
| 10367200 | SP342P 45S/940 DEIA PCS SMT L150 BK | (0.38, 0.38) SDCM <3 |

| Order Code | Full Product Name | Initial chromaticity |
|------------|-------------------------------------|----------------------|
| 10365800 | SP342P 45S/940 DEIA PCS SMT L150 WH | (0.38, 0.38) SDCM <3 |
| 10387000 | SP340P 36S/940 DEIA PCS SMT L120 WH | (0.38, 0.38) SDCM <3 |
| 10388700 | SP340P 42S/940 DEIA PCS SMT L120 WH | (0.38, 0.38) SDCM <3 |

FlexBlend, Suspended

| Order Code | Full Product Name | Initial chromaticity |
|------------|-------------------------------------|----------------------|
| 10391700 | SP342P 48S/940 DEIA PCS SMT L120 WH | (0.38, 0.38) SDCM <3 |
| 18294300 | SP342P 60S/940 DEIA PCS SMT L150 WH | (0.38, 0.38) SDCM <3 |
| 18295000 | SP342P 70S/940 DEIA PCS SMT L150 WH | (0.38, 0.38) SDCM <3 |
| 18299800 | SP342P 60S/930 DEIA PCS SMT L150 WH | (0.43, 0.40) SDCM <3 |
| 18316200 | SP343P 35S/940 DEIA PCS SMT L150 WH | (0.38, 0.38) SDCM <3 |
| 10375700 | SP342P 45S/940 DEIA MLO SMT L150 BK | (0.38, 0.38) SDCM <3 |
| 10366500 | SP342P 45S/940 DEIA PCS SMT L150 SI | (0.38, 0.38) SDCM <3 |

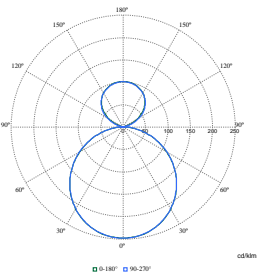
| Order Code | Full Product Name | Initial chromaticity |
|------------|-------------------------------------|----------------------|
| 10374000 | SP342P 45S/940 DEIA MLO SMT L150 SI | (0.38, 0.38) SDCM <3 |
| 10373300 | SP342P 45S/940 DEIA MLO SMT L150 WH | (0.38, 0.38) SDCM <3 |
| 10389400 | SP340P 36S/940 DEIA MLO SMT L120 WH | (0.38, 0.38) SDCM <3 |
| 10390000 | SP340P 40S/940 DEIA MLO SMT L120 WH | (0.38, 0.38) SDCM <3 |
| 10393100 | SP342P 48S/940 DEIA MLO SMT L120 WH | (0.38, 0.38) SDCM <3 |
| 10394800 | SP342P 52S/940 DEIA MLO SMT L120 WH | (0.38, 0.38) SDCM <3 |
| 18307000 | SP342P 45S/940 DEIA O SMT L150 BK | (0.38, 0.38) SDCM <3 |

Product Data

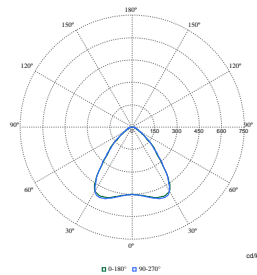
| Order Code | Full Product Name | Product family code |
|------------|-------------------------------------|---------------------|
| 10378800 | SP342P 45S/940 DEIA O SMT L150 WH | SP342P |
| 18286800 | SP342P 36S/940 DEIA O SMT L120 WH | SP342P |
| 10367200 | SP342P 45S/940 DEIA PCS SMT L150 BK | SP342P |
| 10365800 | SP342P 45S/940 DEIA PCS SMT L150 WH | SP342P |
| 10387000 | SP340P 36S/940 DEIA PCS SMT L120 WH | SP340P |
| 10388700 | SP340P 42S/940 DEIA PCS SMT L120 WH | SP340P |
| 10391700 | SP342P 48S/940 DEIA PCS SMT L120 WH | SP342P |
| 18294300 | SP342P 60S/940 DEIA PCS SMT L150 WH | SP342P |
| 18295000 | SP342P 70S/940 DEIA PCS SMT L150 WH | SP342P |
| 18299800 | SP342P 60S/930 DEIA PCS SMT L150 WH | SP342P |

| Order Code | Full Product Name | Product family code |
|------------|-------------------------------------|---------------------|
| 18316200 | SP343P 35S/940 DEIA PCS SMT L150 WH | SP343P |
| 10375700 | SP342P 45S/940 DEIA MLO SMT L150 BK | SP342P |
| 10366500 | SP342P 45S/940 DEIA PCS SMT L150 SI | SP342P |
| 10374000 | SP342P 45S/940 DEIA MLO SMT L150 SI | SP342P |
| 10373300 | SP342P 45S/940 DEIA MLO SMT L150 WH | SP342P |
| 10389400 | SP340P 36S/940 DEIA MLO SMT L120 WH | SP340P |
| 10390000 | SP340P 40S/940 DEIA MLO SMT L120 WH | SP340P |
| 10393100 | SP342P 48S/940 DEIA MLO SMT L120 WH | SP342P |
| 10394800 | SP342P 52S/940 DEIA MLO SMT L120 WH | SP342P |
| 18307000 | SP342P 45S/940 DEIA O SMT L150 BK | SP342P |

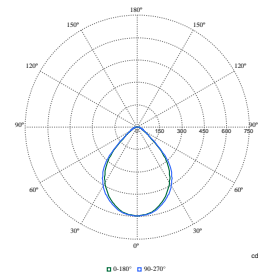
Polar Wide Diagrams



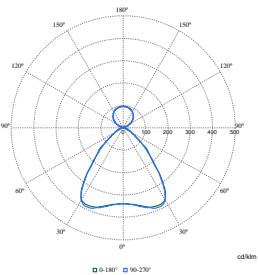
Polar Normal (separate) - SM340CI - 910925867117



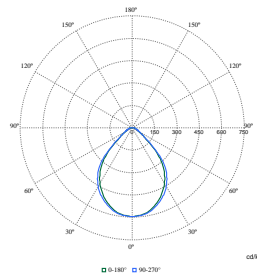
Polar Normal (separate) - SM340CI - 910925867127



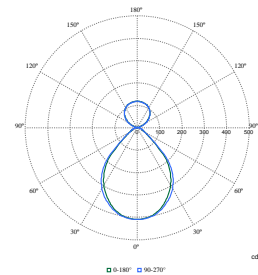
Polar Normal (separate) - SM340CI - 910925867128



Polar Normal (separate) - SM340CI - 910925867105



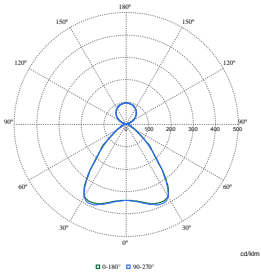
Polar Normal (separate) - SM340CI - 910925867129



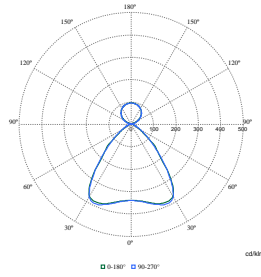
Polar Normal (separate) - SM340CI - 910925867112

FlexBlend, Suspended

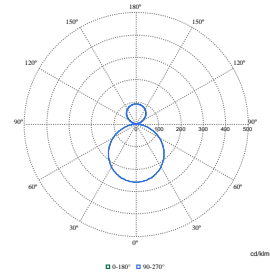
Polar Wide Diagrams



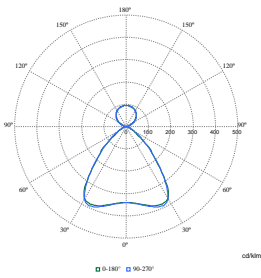
Polar Normal (separate) - SM340CI - 910925867932



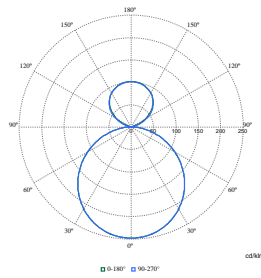
Polar Normal (separate) - SM340CI - 910925867937



Polar Normal (separate) - SM340CI - 910925867924



Polar Normal (separate) - SM340CI - 910925867954



Polar Normal (separate) - SM340CI - 910925867945

