



# FlexBlend heading the way to efficient and flexible furnished offices areas

## FlexBlend, Suspended

Philips FlexBlend is an attractive family of surface mounted and suspended luminaires, next to Flexblend recessed. The luminaire range is enabling building owners to advance their lighting operations, by offering office-compliant lighting with a return on investment of less than 3 to 4 years. FlexBlend provides the required flexibility through the adaptability in design. This gives the possibility to install the luminaires easily in the field, at any moment. Even when today's luminaire is suspended, tomorrow this can be adapted to a surface mounted installation at the venue. And the other way around. . The surface mounted and suspended luminaire range fit to many different office spaces like open plan office, corridors, reception or meeting rooms. FlexBlend is offered in both lines and as standalone, using the same lighting module. This gives the option to the users to use FlexBlend as standalone now, and tomorrow, as line. The controller is integrated in the luminaire. As technology is changing fast, the ideal lighting solution is also expected to be ready to incorporate innovations that can help optimize operations further. For this reason, FlexBlend holds all connectivity and future ready options available. As System Ready luminaire it can be paired with lighting management systems such as the Philips SpaceWise, and to software-based lighting systems as Interact Office wired (PoE) and Interact Office wireless and/or existing and upcoming sensor innovations. The luminaire range is therefore future ready and can be delivered without any system component, and in a next phase, in the field to be upgraded. An attractive opportunity for new installations and renovations.

# FlexBlend, Suspended

## Benefits

- Return of investment less than 3 years
- A flexible office, with application flexibility to the choice of luminaires to fit many office areas
- Future ready: scalable and ready to be connected to controls and lighting systems

## Features

- Fully office compliant (UGR <19, L65< 3000cd/sm) , light level according to office applications requirements
- Homogenous and uniform light effect
- Various mounting options, dimensional variety and local options
- Integrated sensors
- Ready to be connected to software based lighting systems such as Interact Office

## Application

- Offices
- Education
- Healthcare

## Warnings and Safety

- The product is IPX0 & as such is not protected against water ingress & as such we strongly recommend that the environment in which the luminaire is to be installed is suitably checked
- If The above advice is not taken and the luminaires are subject to water ingress, Philips / Signify cannot guarantee safe failure & product warranty will become void

## Versions



FlexBlend Suspended SP340P PCS BK



FlexBlend Suspended SP340P MLO BK



FlexBlend Suspended SP340P PCS SI



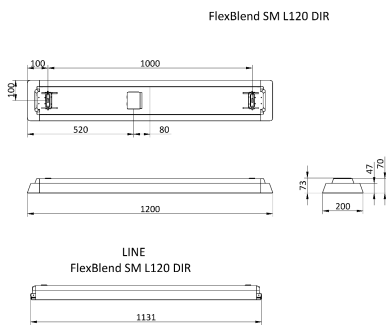
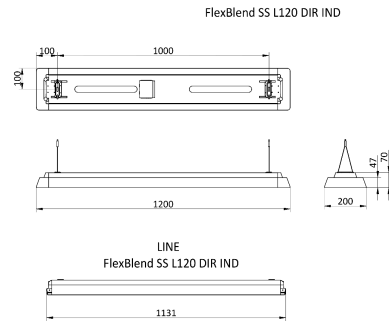
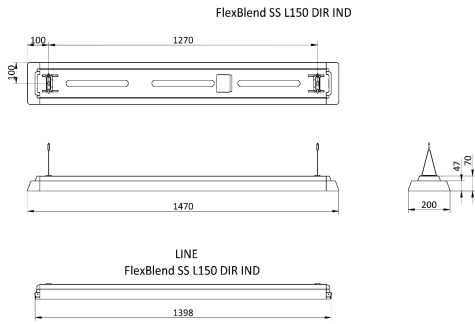
FlexBlend Suspended SP340P MLO SI



FlexBlend Suspended SP340P O BK

# FlexBlend, Suspended

## Dimensional drawing



## Product details



FlexBlend Suspended SP340P WH



FlexBlend Suspended SP340P



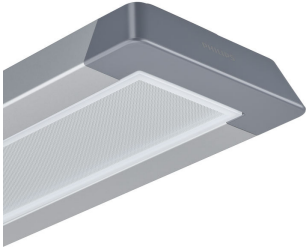
FlexBlend Suspended SP340P O  
BK



FlexBlend Suspended SP340P SI

# FlexBlend, Suspended

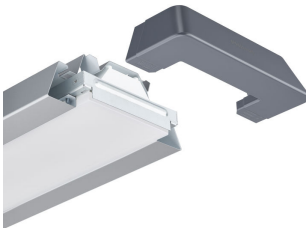
## Product details



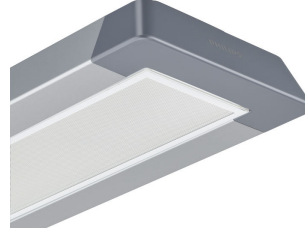
FlexBlend Suspended SP340P  
MLO SI



FlexBlend Suspended SP340P PCS  
WH



FlexBlend Suspended SP340P O SI



FlexBlend Suspended SP340P PCS  
SI



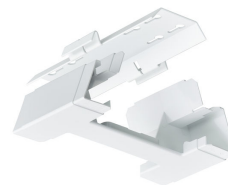
FlexBlend Suspended SP340P PCS  
BK



FlexBlend Suspended SP340P SI



FlexBlend Suspended SP340P BK



FlexBlend Suspended SP340P WH

# FlexBlend, Suspended

## Product details



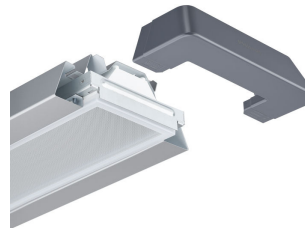
FlexBlend Suspended SP340P  
MLO BK



FlexBlend Suspended SP340P  
MLO BK



FlexBlend Suspended SP340P BK



FlexBlend Suspended SP340P  
MLO SI



FlexBlend Surface Mounted  
SM340C



FlexBlend Suspended SP340P O  
WH



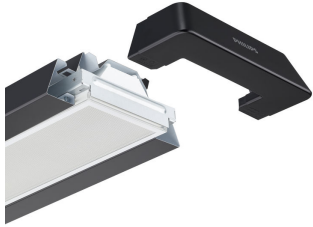
FlexBlend Suspended SP340P  
MLO WH



FlexBlend Suspended SP340P SI

# FlexBlend, Suspended

## Product details



FlexBlend Suspended SP340P PCS  
BK



FlexBlend Suspended SP340P BK



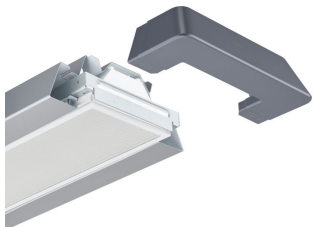
FlexBlend Suspended SP340P O  
WH



FlexBlend Suspended SP340P WH



FlexBlend Suspended SP340P WH



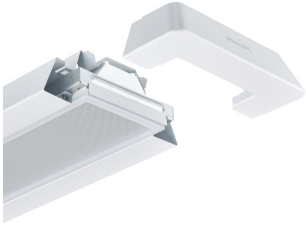
FlexBlend Suspended SP340P PCS  
SI



FlexBlend Suspended SP340P WH

# FlexBlend, Suspended

## Product details



FlexBlend Suspended SP340P  
MLO WH



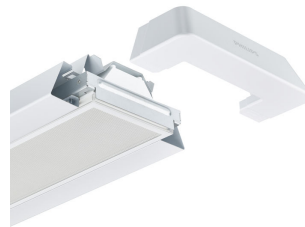
FlexBlend Suspended SP340P BK



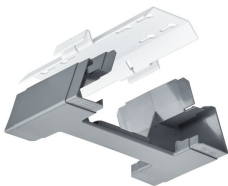
FlexBlend Suspended SP340P SI



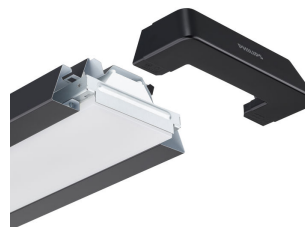
FlexBlend Suspended SP340P BK



FlexBlend Suspended SP340P PCS  
WH



FlexBlend Suspended SP340P SI



FlexBlend Suspended SP340P O  
BK

# FlexBlend, Suspended

## General Information

Driver included	Yes
Light source replaceable	No
Number of gear units	1 unit
Service tag	Yes

## Light Technical

Beam angle of light source	120 degree(s)
Color rendering index (CRI)	>90
Optic type	Wide beam

## Operating and Electrical

Protection class IEC	Safety class I
Input Voltage	220 to 240 V
Line Frequency	50 to 60 Hz
Suitable for random switching	Yes (relates to presence/movement detection and daylight harvesting)

## Controls and Dimming

Dimmable	Yes
Maximum dim level	1%

## Mechanical and Housing

Mech. impact protection code	IK02
Ingress protection code	IP20

## Approval and Application

Ambient temperature range	+10 to +40 °C
CE mark	Yes
ENEC mark	ENEC plus mark
Flammability mark	For mounting on normally flammable surfaces
Flickering value (PstLM) - Flickering value as per EN 61000-3-3	1
Stroboscopic effect visibility measure (SVM)	0.4

## Initial Performance (IEC Compliant)

Initial chromaticity	(0.43, 0.40) SDCM <3
Luminous flux tolerance	+/-10%

## Light Technical

Order Code	Full Product Name	Correlated Color Temperature (Nom)	Luminous Efficacy (rated) (Nom)	Luminous Flux
10378800	SP342P 45S/940 PSD O SMT L150 WH	4000 K	136 lm/W	4,500 lm
18286800	SP342P 36S/940 PSD O SMT L120 WH	4000 K	128 lm/W	3,600 lm
10367200	SP342P 45S/940 PSD PCS SMT L150 BK	4000 K	145 lm/W	4,500 lm
10365800	SP342P 45S/940 PSD PCS SMT L150 WH	4000 K	145 lm/W	4,500 lm
10387000	SP340P 36S/940 PSD PCS SMT L120 WH	4000 K	138 lm/W	3,600 lm
10388700	SP340P 42S/940 PSD PCS SMT L120 WH	4000 K	143 lm/W	4,200 lm
10391700	SP342P 48S/940 PSD PCS SMT L120 WH	4000 K	141 lm/W	4,800 lm
18294300	SP342P 60S/940 PSD PCS SMT L150 WH	4000 K	140 lm/W	6,000 lm
18295000	SP342P 70S/940 PSD PCS SMT L150 WH	4000 K	137 lm/W	7,000 lm
18299800	SP342P 60S/930 PSD PCS SMT L150 WH	3000 K	140 lm/W	6,000 lm
18316200	SP343P 35S/940 PSD PCS SMT L150 WH	4000 K	140 lm/W	3,500 lm
10375700	SP342P 45S/940 PSD MLO SMT L150 BK	4000 K	112 lm/W	4,500 lm
10366500	SP342P 45S/940 PSD PCS SMT L150 SI	4000 K	145 lm/W	4,500 lm
10374000	SP342P 45S/940 PSD MLO SMT L150 SI	4000 K	112 lm/W	4,500 lm
10373300	SP342P 45S/940 PSD MLO SMT L150 WH	4000 K	112 lm/W	4,500 lm
10389400	SP340P 36S/940 PSD MLO SMT L120 WH	4000 K	95 lm/W	3,600 lm
10390000	SP340P 40S/940 PSD MLO SMT L120 WH	4000 K	94 lm/W	4,000 lm
10393100	SP342P 48S/940 PSD MLO SMT L120 WH	4000 K	109 lm/W	4,800 lm
10394800	SP342P 52S/940 PSD MLO SMT L120 WH	4000 K	108 lm/W	5,200 lm
18307000	SP342P 45S/940 PSD O SMT L150 BK	4000 K	136 lm/W	4,500 lm

## Operating and Electrical

Order Code	Full Product Name	Power Consumption	Order Code	Full Product Name	Power Consumption
10378800	SP342P 45S/940 PSD O SMT L150 WH	37.5 W	10367200	SP342P 45S/940 PSD PCS SMT L150 BK	35 W
18286800	SP342P 36S/940 PSD O SMT L120 WH	29 W	10365800	SP342P 45S/940 PSD PCS SMT L150 WH	35 W

## FlexBlend, Suspended

Order Code	Full Product Name	Power Consumption
10387000	SP340P 36S/940 PSD PCS SMT L120 WH	26.5 W
10388700	SP340P 42S/940 PSD PCS SMT L120 WH	32 W
10391700	SP342P 48S/940 PSD PCS SMT L120 WH	36 W
18294300	SP342P 60S/940 PSD PCS SMT L150 WH	46.5 W
18295000	SP342P 70S/940 PSD PCS SMT L150 WH	52 W
18299800	SP342P 60S/930 PSD PCS SMT L150 WH	49.5 W
18316200	SP343P 35S/940 PSD PCS SMT L150 WH	27.5 W
10375700	SP342P 45S/940 PSD MLO SMT L150 BK	42.5 W

Order Code	Full Product Name	Power Consumption
10366500	SP342P 45S/940 PSD PCS SMT L150 SI	35 W
10374000	SP342P 45S/940 PSD MLO SMT L150 SI	42.5 W
10373300	SP342P 45S/940 PSD MLO SMT L150 WH	42.5 W
10389400	SP340P 36S/940 PSD MLO SMT L120 WH	35 W
10390000	SP340P 40S/940 PSD MLO SMT L120 WH	39 W
10393100	SP342P 48S/940 PSD MLO SMT L120 WH	44.5 W
10394800	SP342P 52S/940 PSD MLO SMT L120 WH	48.5 W
18307000	SP342P 45S/940 PSD O SMT L150 BK	37.5 W

### Mechanical and Housing

Order Code	Full Product Name	Housing Color
10378800	SP342P 45S/940 PSD O SMT L150 WH	White
18286800	SP342P 36S/940 PSD O SMT L120 WH	White
10367200	SP342P 45S/940 PSD PCS SMT L150 BK	Black
10365800	SP342P 45S/940 PSD PCS SMT L150 WH	White
10387000	SP340P 36S/940 PSD PCS SMT L120 WH	White
10388700	SP340P 42S/940 PSD PCS SMT L120 WH	White
10391700	SP342P 48S/940 PSD PCS SMT L120 WH	White
18294300	SP342P 60S/940 PSD PCS SMT L150 WH	White
18295000	SP342P 70S/940 PSD PCS SMT L150 WH	White
18299800	SP342P 60S/930 PSD PCS SMT L150 WH	White

Order Code	Full Product Name	Housing Color
18316200	SP343P 35S/940 PSD PCS SMT L150 WH	White
10375700	SP342P 45S/940 PSD MLO SMT L150 BK	Black
10366500	SP342P 45S/940 PSD PCS SMT L150 SI	Silver
10374000	SP342P 45S/940 PSD MLO SMT L150 SI	Silver
10373300	SP342P 45S/940 PSD MLO SMT L150 WH	White
10389400	SP340P 36S/940 PSD MLO SMT L120 WH	White
10390000	SP340P 40S/940 PSD MLO SMT L120 WH	White
10393100	SP342P 48S/940 PSD MLO SMT L120 WH	White
10394800	SP342P 52S/940 PSD MLO SMT L120 WH	White
18307000	SP342P 45S/940 PSD O SMT L150 BK	Black

### Approval and Application

Order Code	Full Product Name	Glow-wire test
10378800	SP342P 45S/940 PSD O SMT L150 WH	Temperature 850 °C, duration 30 s
18286800	SP342P 36S/940 PSD O SMT L120 WH	Temperature 850 °C, duration 30 s
10367200	SP342P 45S/940 PSD PCS SMT L150 BK	Temperature 850 °C, duration 30 s
10365800	SP342P 45S/940 PSD PCS SMT L150 WH	Temperature 850 °C, duration 30 s
10387000	SP340P 36S/940 PSD PCS SMT L120 WH	Temperature 850 °C, duration 30 s
10388700	SP340P 42S/940 PSD PCS SMT L120 WH	Temperature 850 °C, duration 30 s
10391700	SP342P 48S/940 PSD PCS SMT L120 WH	Temperature 850 °C, duration 30 s
18294300	SP342P 60S/940 PSD PCS SMT L150 WH	Temperature 850 °C, duration 30 s
18295000	SP342P 70S/940 PSD PCS SMT L150 WH	Temperature 850 °C, duration 30 s
18299800	SP342P 60S/930 PSD PCS SMT L150 WH	Temperature 850 °C, duration 30 s

Order Code	Full Product Name	Glow-wire test
18316200	SP343P 35S/940 PSD PCS SMT L150 WH	Temperature 850 °C, duration 30 s
10375700	SP342P 45S/940 PSD MLO SMT L150 BK	Temperature 650 °C, duration 30 s
10366500	SP342P 45S/940 PSD PCS SMT L150 SI	Temperature 850 °C, duration 30 s
10374000	SP342P 45S/940 PSD MLO SMT L150 SI	Temperature 650 °C, duration 30 s
10373300	SP342P 45S/940 PSD MLO SMT L150 WH	Temperature 650 °C, duration 30 s
10389400	SP340P 36S/940 PSD MLO SMT L120 WH	Temperature 650 °C, duration 30 s
10390000	SP340P 40S/940 PSD MLO SMT L120 WH	Temperature 650 °C, duration 30 s
10393100	SP342P 48S/940 PSD MLO SMT L120 WH	Temperature 650 °C, duration 30 s
10394800	SP342P 52S/940 PSD MLO SMT L120 WH	Temperature 650 °C, duration 30 s
18307000	SP342P 45S/940 PSD O SMT L150 BK	Temperature 850 °C, duration 30 s

### Product Data

Order Code	Full Product Name	Product family code
10378800	SP342P 45S/940 PSD O SMT L150 WH	SP342P
18286800	SP342P 36S/940 PSD O SMT L120 WH	SP342P
10367200	SP342P 45S/940 PSD PCS SMT L150 BK	SP342P

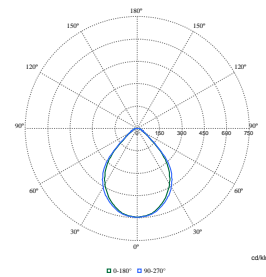
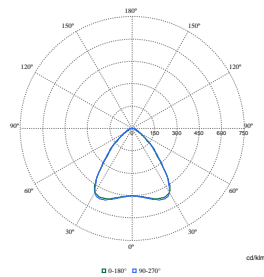
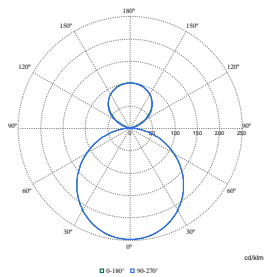
Order Code	Full Product Name	Product family code
10365800	SP342P 45S/940 PSD PCS SMT L150 WH	SP342P
10387000	SP340P 36S/940 PSD PCS SMT L120 WH	SP340P
10388700	SP340P 42S/940 PSD PCS SMT L120 WH	SP340P

# FlexBlend, Suspended

Order Code	Full Product Name	Product family code
10391700	SP342P 48S/940 PSD PCS SMT L120 WH	SP342P
18294300	SP342P 60S/940 PSD PCS SMT L150 WH	SP342P
18295000	SP342P 70S/940 PSD PCS SMT L150 WH	SP342P
18299800	SP342P 60S/930 PSD PCS SMT L150 WH	SP342P
18316200	SP343P 35S/940 PSD PCS SMT L150 WH	SP343P
10375700	SP342P 45S/940 PSD MLO SMT L150 BK	SP342P
10366500	SP342P 45S/940 PSD PCS SMT L150 SI	SP342P

Order Code	Full Product Name	Product family code
10374000	SP342P 45S/940 PSD MLO SMT L150 SI	SP342P
10373300	SP342P 45S/940 PSD MLO SMT L150 WH	SP342P
10389400	SP340P 36S/940 PSD MLO SMT L120 WH	SP340P
10390000	SP340P 40S/940 PSD MLO SMT L120 WH	SP340P
10393100	SP342P 48S/940 PSD MLO SMT L120 WH	SP342P
10394800	SP342P 52S/940 PSD MLO SMT L120 WH	SP342P
18307000	SP342P 45S/940 PSD O SMT L150 BK	SP342P

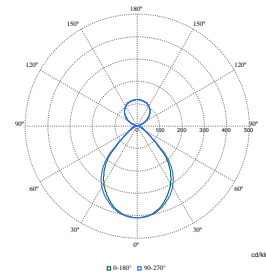
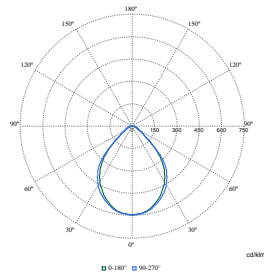
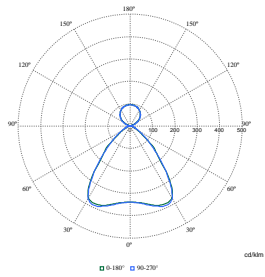
## Polar Wide Diagrams



**Polar Normal (separate) - SM340CI - 910925867117**

**Polar Normal (separate) - SM340CI - 910925867127**

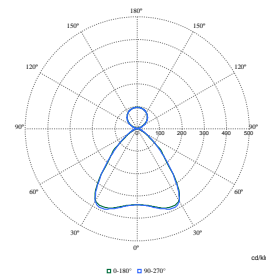
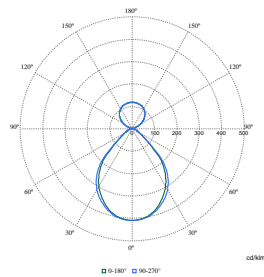
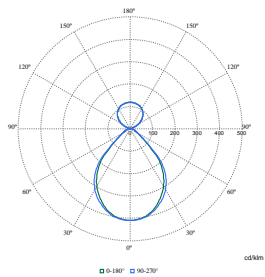
**Polar Normal (separate) - SM340CI - 910925867128**



**Polar Normal (separate) - SM340CI - 910925867105**

**Polar Normal (separate) - SM340CI - 910925867129**

**Polar Normal (separate) - SM340CI - 910925867112**

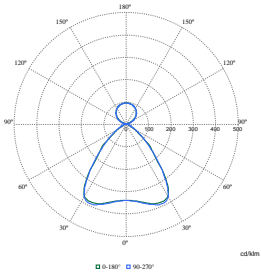


**Polar Normal (separate) - SM340CI - 910925867113**

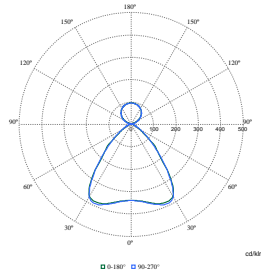
**Polar Normal (separate) - SM340CI - 910925867114**

**Polar Normal (separate) - SM340CI - 910925867933**

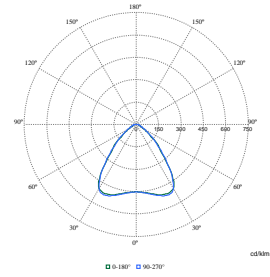
## Polar Wide Diagrams



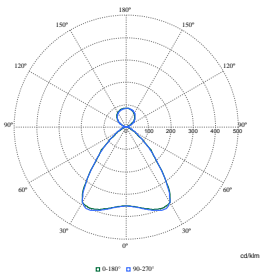
**Polar Normal (separate) - SM340CI - 910925867104**



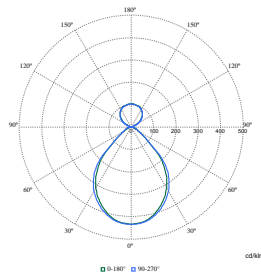
**Polar Normal (separate) - SM340CI - 910925867106**



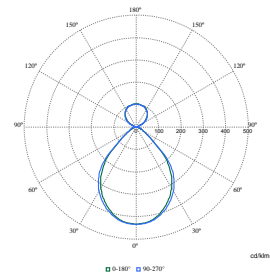
**Polar Normal (separate) - SM340CI - 910925867126**



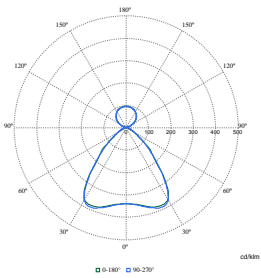
**Polar Normal (separate) - SM340CI - 910925867130**



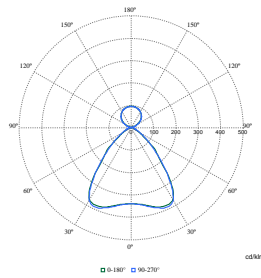
**Polar Normal (separate) - SM340CI - 910925867132**



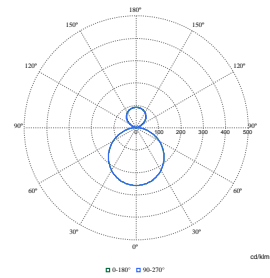
**Polar Normal (separate) - SM340CI - 910925867133**



**Polar Normal (separate) - SM340CI - 910925867932**



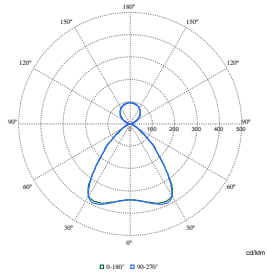
**Polar Normal (separate) - SM340CI - 910925867937**



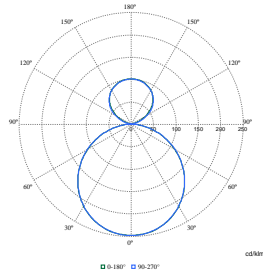
**Polar Normal (separate) - SM340CI - 910925867924**

# FlexBlend, Suspended

## Polar Wide Diagrams



**Polar Normal (separate) - SM340CI - 910925867954**



**Polar Normal (separate) - SM340CI - 910925867945**

