



Flexibel ljuslinje

KeyLine nedpendlad

Ljusrader är idag mycket populära bland kontorsägare och ljusdesigners på grund av deras minimalistiska design och stora flexibilitet. KeyLine erbjuder alla dessa fördelar till ett konkurrenskraftigt pris och uppfyller alla standarder för kontorsbelysning. KeyLine är en ljusradsserie med tunn, minimalistisk design och högt ljusflöde som effektivt lyser upp kontorsytor. Serien uppfyller UGR19-standarder för låg bländning, vilket gör den behaglig för ögonen. KeyLine passar utmärkt för både linjära användningsområden och som fristående pendel- eller utanpåliggande armaturer (tillbehör beställs separat). Serien erbjuder ultimata flexibilitet med olika längder, färger och ljusflöden, inklusive L-former och raka linjer. Med en hög effektivitet på upp till 142 lm/W och möjligheten att uppgradera till trådlös uppkoppling och styrning, ger KeyLine utmärkt valuta för pengarna och en låg total ägandekostnad (TCO).

Fördelar

- Väl lämpad för användning på kontor
- Utmärkt total ägandekostnad (TCO)
- Flera monteringsalternativ anpassade för olika kontorsbehov

Funktioner

- God avbländning: Hela serien uppfyller UGR19
- Hög ljusstyrka; upp till 4 000 lm hos 1,2m-versionen
- Interact Ready via trådlöst drivdon
- Standardalternativ med olika längder, färger och ljusflöden
- Konfigurerbar

Användning

- Kontor
- Butik
- Skolor

KeyLine nedpendlad

Varning och Säkerhet

- KeyLine-armaturer är IP20-klassade och inte skyddade mot vattenintrång. Därför rekommenderar vi att du kontrollerar att installationsmiljön är lämplig för armaturen.
- Om du – trots varningen om IPX0-klassning – utsätter armaturen för vatten, kan Philips och Signify inte garantera produktens säkerhet eller funktion och produktens garanti upphör att gälla.

Versions



KeyLine L-corner, black

KeyLine L-corner, alu

KeyLine suspended L1500, white

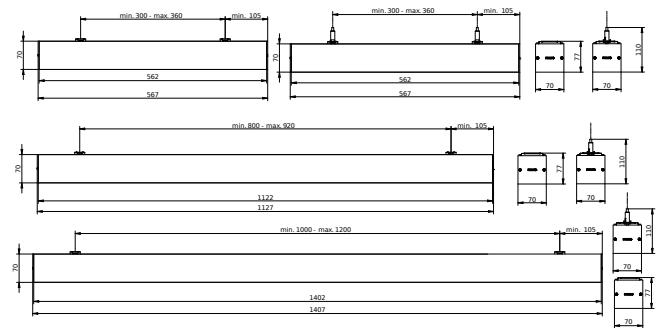
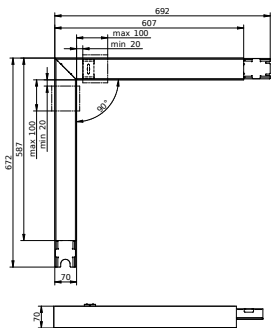
KeyLine suspended L1200, white



KeyLine suspended L1200, bk

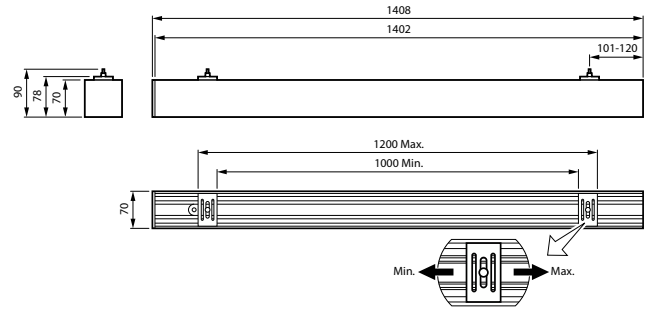
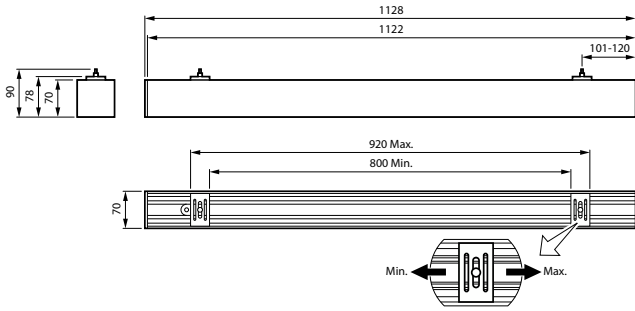
KeyLine L-corner, white

Måttskiss



KeyLine nedpendlad

Måttskiss



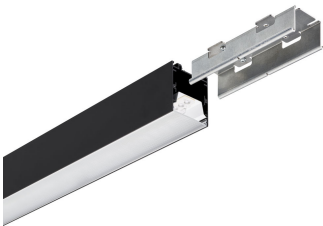
Produktinformation



KeyLine line coupling, alu



KeyLine black with ceiling bracket accessory for surface mounting



KeyLine black with coupling piece accessory for line mounting



KeyLine Asymmetric SM531C detailed



KeyLine_SM350C_WIA_DPPI



KeyLine line configuration, white



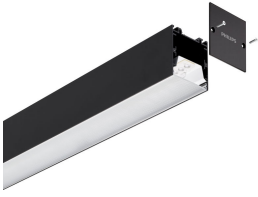
KeyLine SM350C, white



KeyLine configuration with L-corner SM350X

KeyLine nedpendlad

Produktinformation



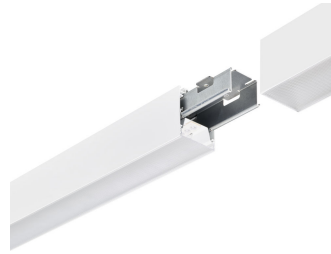
KeyLine black with end-cap accessory



KeyLine line coupling, white



KeyLine alu with suspension set for suspended mounting



KeyLine white line coupling with coupling piece accessory



KeyLine_SM350C_WIA_DPP3



KeyLine alu with end-cap accessory



KeyLine white with coupling piece accessory for line mounting



KeyLine structured optics UGR19 (PCS)

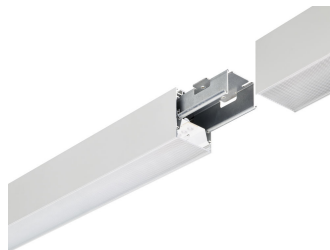


KeyLine line coupling, black

KeyLine nedpendlad

Produktinformation

KeyLine SM350C, alu



KeyLine alu line coupling with coupling piece accessory

KeyLine line configuration, black



KeyLine alu with ceiling bracket accessory for surface mounting



KeyLine white with suspension set for suspended mounting



KeyLine white with ceiling bracket accessory for surface mounting



KeyLine white with end-cap accessory



KeyLine alu with coupling piece accessory for line mounting



KeyLine SM350C, black

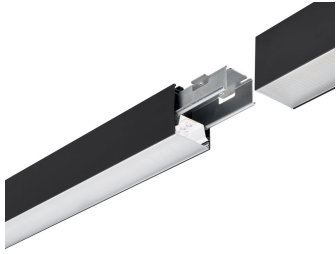


KeyLine L-corner, black



KeyLine nedpendlad

Produktinformation



KeyLine black line coupling with coupling piece accessory



KeyLine black with suspension set for suspended mounting



KeyLine_SM350C_WIA_DPP2



KeyLine L-corner, alu



KeyLine L-corner, white

KeyLine nedpendlad

Allmän information

| | |
|------------------------|---------|
| Driftdon ingår | Ja |
| Antal driftdonsenheter | 1 enhet |
| Service tag | Ja |

Ljusteknik

| | |
|-----------------------|-----|
| Färgåtergivningsindex | >80 |
|-----------------------|-----|

Drift och elektricitet

| | |
|-----------------|------------------|
| Skyddsklass IEC | Säkerhetsklass I |
| Line Frequency | 50 to 60 Hz |

Mekanik och armaturhus

| | |
|---------------------------------|------|
| Skyddskod för mekanisk påverkan | IK06 |
| Kod för kapslingsklass | IP20 |

Användning och godkännande

| | |
|----------------------|----------------------------------|
| Omgivningstemperatur | +10 till +35 °C |
| CE-märkning | Ja |
| ENEC-märkning | ENEC-märkning |
| Glödtrådtest | Temperatur 650 °C, under 30 s |
| Stroboskopisk effekt | 0,4 |

Ursprunglig prestanda (IEC-kompatibel)

| | |
|------------------------|--------|
| Tolerans för ljusflöde | +/-10% |
|------------------------|--------|

Allmän information

| Order Code | Full Product Name | Utbytbar ljuskälla |
|--------------|-----------------------------------|--------------------|
| 910925868390 | SM350X 27S/840 PSD PCS N BK | Nej |
| 910925868378 | SM350C 34S/840 PSU PCS L1500 BK | Nej |
| 910925868381 | SM350C 50S/840 PSU PCS L1500 BK | Nej |
| 910925868384 | SM350C 34S/840 PSD PCS L1500 BK | Nej |
| 910925868387 | SM350C 50S/840 PSD PCS L1500 BK | Nej |
| 910925868303 | SM350C 27S/840 PSU PCS L1200 ALU | Nej |
| 910925868353 | SM350C 40S/840 PSU PCS L1200 ALU | Nej |
| 910925868356 | SM350C 27S/840 PSD PCS L1200 ALU | Nej |
| 910925868359 | SM350C 40S/840 PSD PCS L1200 ALU | Nej |
| 910925868368 | SM350C 27S/830 PSU PCS L1200 ALU | Nej |
| 910925868370 | SM350C 40S/830 PSU PCS L1200 ALU | Nej |
| 910925868372 | SM350C 27S/830 PSD PCS L1200 ALU | Nej |
| 910925868374 | SM350C 40S/830 PSD PCS L1200 ALU | Nej |
| 910925868388 | SM350X 27S/840 PSD L60L60 PCS ALU | Nej |
| 910925868376 | SM350C 34S/840 PSU PCS L1500 ALU | Nej |
| 910925868379 | SM350C 50S/840 PSU PCS L1500 ALU | Nej |
| 910925868382 | SM350C 34S/840 PSD PCS L1500 ALU | Nej |
| 910925868385 | SM350C 50S/840 PSD PCS L1500 ALU | Nej |
| 910925868377 | SM350C 34S/840 PSU PCS L1500 WH | Nej |
| 910925868380 | SM350C 50S/840 PSU PCS L1500 WH | Nej |
| 910925868383 | SM350C 34S/840 PSD PCS L1500 WH | Nej |
| 910925868386 | SM350C 50S/840 PSD PCS L1500 WH | Nej |
| 910925868362 | SM350C 27S/840 WIA PCS L1200 ALU | Nej |
| 910925868363 | SM350C 27S/840 WIA PCS L1200 WH | Nej |
| 910925868364 | SM350C 27S/840 WIA PCS L1200 BK | Nej |
| 910925868365 | SM350C 40S/840 WIA PCS L1200 ALU | Nej |
| 910925868366 | SM350C 40S/840 WIA PCS L1200 WH | Nej |
| 910925868367 | SM350C 40S/840 WIA PCS L1200 BK | Nej |
| 910925868351 | SM350C 27S/840 PSU PCS L1200 WH | Nej |
| 910925868354 | SM350C 40S/840 PSU PCS L1200 WH | Nej |
| 910925868357 | SM350C 27S/840 PSD PCS L1200 WH | Nej |
| 910925868360 | SM350C 40S/840 PSD PCS L1200 WH | Nej |
| 910925868369 | SM350C 27S/830 PSU PCS L1200 WH | Nej |
| 910925868371 | SM350C 40S/830 PSU PCS L1200 WH | Nej |
| 910925868373 | SM350C 27S/830 PSD PCS L1200 WH | Nej |
| 910925868375 | SM350C 40S/830 PSD PCS L1200 WH | Nej |
| 910925868352 | SM350C 27S/840 PSU PCS L1200 BK | Nej |
| 910925868355 | SM350C 40S/840 PSU PCS L1200 BK | Nej |
| 910925868358 | SM350C 27S/840 PSD PCS L1200 BK | Nej |
| 910925868361 | SM350C 40S/840 PSD PCS L1200 BK | Nej |
| 910925868389 | SM350X 27S/840 PSD L60L60 PCS WH | Nej |
| 910505103701 | SM351C 40S/840 PSU A PCS L1200 WH | - |
| 910505103702 | SM351C 40S/840 PSD A PCS L1200 WH | - |
| 910505103703 | SM351C 50S/840 PSU A PCS L1500 WH | - |
| 910505103704 | SM351C 50S/840 PSD A PCS L1500 WH | - |

Ljusteknik (1/2)

KeyLine nedpendlad

| Order Code | Full Product | | Korrelerad färgtemperatur (Nom) | Ljusutbyte (märkvärde) | |
|--------------|--|------------------------------|---------------------------------|------------------------|-----------|
| | Name | Ljuskällans spridningsvinkel | | (nom) | Ljusflöde |
| 910925868390 | SM350X 27S/840 PSD PCS N BK | 120 ° | 4000 K | 135 lm/W | 2 700 lm |
| 910925868378 | SM350C 34S/840 PSU PCS L1500 BK | 120 ° | 4000 K | 142 lm/W | 3 400 lm |
| 910925868381 | SM350C 50S/840 PSU PCS L1500 BK | 120 ° | 4000 K | 135 lm/W | 5 000 lm |
| 910925868384 | SM350C 34S/840 PSD PCS L1500 BK | 120 ° | 4000 K | 136 lm/W | 3 400 lm |
| 910925868387 | SM350C 50S/840 PSD PCS L1500 BK | 120 ° | 4000 K | 135 lm/W | 5 000 lm |
| 910925868303 | SM350C 27S/840 PSU PCS L1200 ALU | 120 ° | 4000 K | 138 lm/W | 2 700 lm |
| 910925868353 | SM350C 40S/840 PSU PCS L1200 ALU | 120 ° | 4000 K | 133 lm/W | 4 000 lm |
| 910925868356 | SM350C 27S/840 PSD PCS L1200 ALU | 120 ° | 4000 K | 135 lm/W | 2 700 lm |
| 910925868359 | SM350C 40S/840 PSD PCS L1200 ALU | 120 ° | 4000 K | 133 lm/W | 4 000 lm |
| 910925868368 | SM350C 27S/830 PSU PCS L1200 ALU | 120 ° | 3000 K | 132 lm/W | 2 700 lm |
| 910925868370 | SM350C 40S/830 PSU PCS L1200 ALU | 120 ° | 3000 K | 133 lm/W | 4 000 lm |

| Order Code | Full Product | | Korrelerad färgtemperatur (Nom) | Ljusutbyte (märkvärde) | |
|--------------|---|------------------------------|---------------------------------|------------------------|-----------|
| | Name | Ljuskällans spridningsvinkel | | (nom) | Ljusflöde |
| 910925868372 | SM350C 27S/830 PSD PCS L1200 ALU | 120 ° | 3000 K | 135 lm/W | 2 700 lm |
| 910925868374 | SM350C 40S/830 PSD PCS L1200 ALU | 120 ° | 3000 K | 129 lm/W | 4 000 lm |
| 910925868388 | SM350X 27S/840 PSD L60L60 PCS ALU | 120 ° | 4000 K | 135 lm/W | 2 700 lm |
| 910925868376 | SM350C 34S/840 PSU PCS L1500 ALU | 120 ° | 4000 K | 142 lm/W | 3 400 lm |
| 910925868379 | SM350C 50S/840 PSU PCS L1500 ALU | 120 ° | 4000 K | 135 lm/W | 5 000 lm |
| 910925868382 | SM350C 34S/840 PSD PCS L1500 ALU | 120 ° | 4000 K | 136 lm/W | 3 400 lm |
| 910925868385 | SM350C 50S/840 PSD PCS L1500 ALU | 120 ° | 4000 K | 135 lm/W | 5 000 lm |
| 910925868377 | SM350C 34S/840 PSU PCS L1500 WH | 120 ° | 4000 K | 142 lm/W | 3 400 lm |
| 910925868380 | SM350C 50S/840 PSU PCS L1500 WH | 120 ° | 4000 K | 135 lm/W | 5 000 lm |
| 910925868383 | SM350C 34S/840 PSD PCS L1500 WH | 120 ° | 4000 K | 136 lm/W | 3 400 lm |

KeyLine nedpendlad

| Order Code | Full | Ljuskällans spridningsvinkel | Korrelerad | Ljusutbyte | Ljusflöde |
|--------------|--|------------------------------|----------------|-------------|-----------|
| | Product | | färgtemperatur | (märkvärde) | |
| | Name | (Nom) | (nom) | | |
| 910925868386 | SM350C 50S/840 PSD PCS L1500 WH | 120 ° | 4000 K | 135 lm/W | 5 000 lm |
| 910925868362 | SM350C 27S/840 WIA PCS L1200 ALU | 120 ° | 4000 K | 138 lm/W | 2 700 lm |
| 910925868363 | SM350C 27S/840 WIA PCS L1200 WH | 120 ° | 4000 K | 138 lm/W | 2 700 lm |
| 910925868364 | SM350C 27S/840 WIA PCS L1200 BK | 120 ° | 4000 K | 138 lm/W | 2 700 lm |
| 910925868365 | SM350C 40S/840 WIA PCS L1200 ALU | 120 ° | 4000 K | 133 lm/W | 4 000 lm |
| 910925868366 | SM350C 40S/840 WIA PCS L1200 WH | 120 ° | 4000 K | 133 lm/W | 4 000 lm |
| 910925868367 | SM350C 40S/840 WIA PCS L1200 BK | 120 ° | 4000 K | 133 lm/W | 4 000 lm |
| 910925868351 | SM350C 27S/840 PSU PCS L1200 WH | 120 ° | 4000 K | 138 lm/W | 2 700 lm |
| 910925868354 | SM350C 40S/840 PSU PCS L1200 WH | 120 ° | 4000 K | 133 lm/W | 4 000 lm |
| 910925868357 | SM350C 27S/840 PSD PCS L1200 WH | 120 ° | 4000 K | 135 lm/W | 2 700 lm |
| 910925868360 | SM350C 40S/840 | 120 ° | 4000 K | 133 lm/W | 4 000 lm |

| Order Code | Full | Ljuskällans spridningsvinkel | Korrelerad | Ljusutbyte | Ljusflöde |
|--------------|--|------------------------------|----------------|-------------|-----------|
| | Product | | färgtemperatur | (märkvärde) | |
| | Name | (Nom) | (nom) | | |
| | PSD PCS L1200 WH | | | | |
| 910925868369 | SM350C 27S/830 PSU PCS L1200 WH | 120 ° | 3000 K | 132 lm/W | 2 700 lm |
| 910925868371 | SM350C 40S/830 PSU PCS L1200 WH | 120 ° | 3000 K | 133 lm/W | 4 000 lm |
| 910925868373 | SM350C 27S/830 PSD PCS L1200 WH | 120 ° | 3000 K | 135 lm/W | 2 700 lm |
| 910925868375 | SM350C 40S/830 PSD PCS L1200 WH | 120 ° | 3000 K | 129 lm/W | 4 000 lm |
| 910925868352 | SM350C 27S/840 PSU PCS L1200 BK | 120 ° | 4000 K | 138 lm/W | 2 700 lm |
| 910925868355 | SM350C 40S/840 PSU PCS L1200 BK | 120 ° | 4000 K | 133 lm/W | 4 000 lm |
| 910925868358 | SM350C 27S/840 PSD PCS L1200 BK | 120 ° | 4000 K | 135 lm/W | 2 700 lm |
| 910925868361 | SM350C 40S/840 PSD PCS L1200 BK | 120 ° | 4000 K | 133 lm/W | 4 000 lm |
| 910925868389 | SM350X 27S/840 PSD L60L60 PCS WH | 120 ° | 4000 K | 135 lm/W | 2 700 lm |
| 910505103701 | SM351C 40S/840 PSU A PCS L1200 WH | - | 4000 K | 133 lm/W | 4 000 lm |

KeyLine nedpendlad

| Order Code | Full Product | | Korrelerad färgtemperatur (Nom) | Ljusutbyte (märkvärde) (nom) | Ljusflöde |
|--------------|--------------|------------------------------|---------------------------------|------------------------------|-----------|
| | Name | Ljuskällans spridningsvinkel | | | |
| 910505103702 | SM351C | - | 4000 K | 133 lm/W | 4 000 lm |
| | 40S/840 | | | | |
| | PSD A | | | | |
| | PCS | | | | |
| | L1200 | | | | |
| | WH | | | | |
| 910505103703 | SM351C | - | 4000 K | 135 lm/W | 5 000 lm |
| | 50S/840 | | | | |
| | PSU A | | | | |

| Order Code | Full Product | | Korrelerad färgtemperatur (Nom) | Ljusutbyte (märkvärde) (nom) | Ljusflöde |
|--------------|--------------|------------------------------|---------------------------------|------------------------------|-----------|
| | Name | Ljuskällans spridningsvinkel | | | |
| | PCS | | | | |
| | L1500 | | | | |
| | WH | | | | |
| 910505103704 | SM351C | - | 4000 K | 132 lm/W | 5 000 lm |
| | 50S/840 | | | | |
| | PSD A | | | | |
| | PCS | | | | |
| | L1500 | | | | |
| | WH | | | | |

Ljusteknik (2/2)

| Order Code | Full Product Name | Optiktyp |
|--------------|-----------------------------------|---------------------------------|
| 910925868390 | SM350X 27S/840 PSD PCS N BK | Medelstrålände spridningsvinkel |
| 910925868378 | SM350C 34S/840 PSU PCS L1500 BK | Medelstrålände spridningsvinkel |
| 910925868381 | SM350C 50S/840 PSU PCS L1500 BK | Medelstrålände spridningsvinkel |
| 910925868384 | SM350C 34S/840 PSD PCS L1500 BK | Medelstrålände spridningsvinkel |
| 910925868387 | SM350C 50S/840 PSD PCS L1500 BK | Medelstrålände spridningsvinkel |
| 910925868303 | SM350C 27S/840 PSU PCS L1200 ALU | Medelstrålände spridningsvinkel |
| 910925868353 | SM350C 40S/840 PSU PCS L1200 ALU | Medelstrålände spridningsvinkel |
| 910925868356 | SM350C 27S/840 PSD PCS L1200 ALU | Medelstrålände spridningsvinkel |
| 910925868359 | SM350C 40S/840 PSD PCS L1200 ALU | Medelstrålände spridningsvinkel |
| 910925868368 | SM350C 27S/830 PSU PCS L1200 ALU | Medelstrålände spridningsvinkel |
| 910925868370 | SM350C 40S/830 PSU PCS L1200 ALU | Medelstrålände spridningsvinkel |
| 910925868372 | SM350C 27S/830 PSD PCS L1200 ALU | Medelstrålände spridningsvinkel |
| 910925868374 | SM350C 40S/830 PSD PCS L1200 ALU | Medelstrålände spridningsvinkel |
| 910925868388 | SM350X 27S/840 PSD L60L60 PCS ALU | Medelstrålände spridningsvinkel |
| 910925868376 | SM350C 34S/840 PSU PCS L1500 ALU | Medelstrålände spridningsvinkel |
| 910925868379 | SM350C 50S/840 PSU PCS L1500 ALU | Medelstrålände spridningsvinkel |
| 910925868382 | SM350C 34S/840 PSD PCS L1500 ALU | Medelstrålände spridningsvinkel |
| 910925868385 | SM350C 50S/840 PSD PCS L1500 ALU | Medelstrålände spridningsvinkel |

| Order Code | Full Product Name | Optiktyp |
|--------------|----------------------------------|---------------------------------|
| 910925868377 | SM350C 34S/840 PSU PCS L1500 WH | Medelstrålände spridningsvinkel |
| 910925868380 | SM350C 50S/840 PSU PCS L1500 WH | Medelstrålände spridningsvinkel |
| 910925868383 | SM350C 34S/840 PSD PCS L1500 WH | Medelstrålände spridningsvinkel |
| 910925868386 | SM350C 50S/840 PSD PCS L1500 WH | Medelstrålände spridningsvinkel |
| 910925868362 | SM350C 27S/840 WIA PCS L1200 ALU | Medelstrålände spridningsvinkel |
| 910925868363 | SM350C 27S/840 WIA PCS L1200 WH | Medelstrålände spridningsvinkel |
| 910925868364 | SM350C 27S/840 WIA PCS L1200 BK | Medelstrålände spridningsvinkel |
| 910925868365 | SM350C 40S/840 WIA PCS L1200 ALU | Medelstrålände spridningsvinkel |
| 910925868366 | SM350C 40S/840 WIA PCS L1200 WH | Medelstrålände spridningsvinkel |
| 910925868367 | SM350C 40S/840 WIA PCS L1200 BK | Medelstrålände spridningsvinkel |
| 910925868351 | SM350C 27S/840 PSU PCS L1200 WH | Medelstrålände spridningsvinkel |
| 910925868354 | SM350C 40S/840 PSU PCS L1200 WH | Medelstrålände spridningsvinkel |
| 910925868357 | SM350C 27S/840 PSD PCS L1200 WH | Medelstrålände spridningsvinkel |
| 910925868360 | SM350C 40S/840 PSD PCS L1200 WH | Medelstrålände spridningsvinkel |
| 910925868369 | SM350C 27S/830 PSU PCS L1200 WH | Medelstrålände spridningsvinkel |
| 910925868371 | SM350C 40S/830 PSU PCS L1200 WH | Medelstrålände spridningsvinkel |
| 910925868373 | SM350C 27S/830 PSD PCS L1200 WH | Medelstrålände spridningsvinkel |
| 910925868375 | SM350C 40S/830 PSD PCS L1200 WH | Medelstrålände spridningsvinkel |

KeyLine nedpendlad

| Order Code | Full Product Name | Optiktyp |
|--------------|---------------------------------|---------------------------------|
| 910925868352 | SM350C 27S/840 PSU PCS L1200 BK | Medelstrålande spridningsvinkel |
| 910925868355 | SM350C 40S/840 PSU PCS L1200 BK | Medelstrålande spridningsvinkel |
| 910925868358 | SM350C 27S/840 PSD PCS L1200 BK | Medelstrålande spridningsvinkel |
| 910925868361 | SM350C 40S/840 PSD PCS L1200 BK | Medelstrålande spridningsvinkel |

| Order Code | Full Product Name | Optiktyp |
|--------------|-----------------------------------|---------------------------------|
| 910925868389 | SM350X 27S/840 PSD L60L60 PCS WH | Medelstrålande spridningsvinkel |
| 910505103701 | SM351C 40S/840 PSU A PCS L1200 WH | Asymmetrisk spridningsvinkel |
| 910505103702 | SM351C 40S/840 PSD A PCS L1200 WH | Asymmetrisk spridningsvinkel |
| 910505103703 | SM351C 50S/840 PSU A PCS L1500 WH | Asymmetrisk spridningsvinkel |
| 910505103704 | SM351C 50S/840 PSD A PCS L1500 WH | Asymmetrisk spridningsvinkel |

Drift och elektricitet

| Order Code | Full Product Name | Ingångsspänning | Strömförbrukning | Lämplig för slumpmässig brytning |
|--------------|----------------------------------|-----------------|------------------|----------------------------------|
| 910925868390 | SM350X 27S/840 PSD PCS N BK | 220–240 V | 21 W | Nej |
| 910925868378 | SM350C 34S/840 PSU PCS L1500 BK | 220–240 V | 25 W | Nej |
| 910925868381 | SM350C 50S/840 PSU PCS L1500 BK | 220–240 V | 36,5 W | Nej |
| 910925868384 | SM350C 34S/840 PSD PCS L1500 BK | 220–240 V | 26 W | Nej |
| 910925868387 | SM350C 50S/840 PSD PCS L1500 BK | 220–240 V | 38 W | Nej |
| 910925868303 | SM350C 27S/840 PSU PCS L1200 ALU | 220–240 V | 20,5 W | Nej |
| 910925868353 | SM350C 40S/840 PSU PCS L1200 ALU | 220–240 V | 30 W | Nej |
| 910925868356 | SM350C 27S/840 PSD PCS L1200 ALU | 220–240 V | 21 W | Nej |
| 910925868359 | SM350C 40S/840 PSD PCS L1200 ALU | 220–240 V | 31 W | Nej |
| 910925868368 | SM350C 27S/830 PSU PCS L1200 ALU | 220–240 V | 20,5 W | Nej |
| 910925868370 | SM350C 40S/830 PSU PCS L1200 ALU | 220–240 V | 30 W | Nej |
| 910925868372 | SM350C 27S/830 PSD PCS L1200 ALU | 220–240 V | 21 W | Nej |

| Order Code | Full Product Name | Ingångsspänning | Strömförbrukning | Lämplig för slumpmässig brytning |
|--------------|-----------------------------------|-----------------|------------------|----------------------------------|
| 910925868374 | SM350C 40S/830 PSD PCS L1200 ALU | 220–240 V | 31 W | Nej |
| 910925868388 | SM350X 27S/840 PSD L60L60 PCS ALU | 220–240 V | 21 W | Nej |
| 910925868376 | SM350C 34S/840 PSU PCS L1500 ALU | 220–240 V | 25 W | Nej |
| 910925868379 | SM350C 50S/840 PSU PCS L1500 ALU | 220–240 V | 36,5 W | Nej |
| 910925868382 | SM350C 34S/840 PSD PCS L1500 ALU | 220–240 V | 26 W | Nej |
| 910925868385 | SM350C 50S/840 PSD PCS L1500 ALU | 220–240 V | 38 W | Nej |
| 910925868377 | SM350C 34S/840 PSU PCS L1500 WH | 220–240 V | 25 W | Nej |
| 910925868380 | SM350C 50S/840 PSU PCS L1500 WH | 220–240 V | 36,5 W | Nej |
| 910925868383 | SM350C 34S/840 PSD PCS L1500 WH | 220–240 V | 26 W | Nej |
| 910925868386 | SM350C 50S/840 PSD PCS L1500 WH | 220–240 V | 38 W | Nej |
| 910925868362 | SM350C 27S/840 WIA PCS L1200 ALU | 220–240 V | 20,5 W | Nej |
| 910925868363 | SM350C 27S/840 WIA PCS L1200 WH | 220–240 V | 20,5 W | Nej |

KeyLine nedpendlad

| Order Code | Full Product Name | Ingångsspänning | Strömförbrukning | Lämplig för slumpmässig brytning |
|--------------|--|-----------------|------------------|----------------------------------|
| 910925868364 | SM350C 27S/840 WIA PCS L1200 BK | 220–240 V | 20,5 W | Nej |
| 910925868365 | SM350C 40S/840 WIA PCS L1200 ALU | 220–240 V | 30 W | Nej |
| 910925868366 | SM350C 40S/840 WIA PCS L1200 WH | 220–240 V | 30 W | Nej |
| 910925868367 | SM350C 40S/840 WIA PCS L1200 BK | 220–240 V | 30 W | Nej |
| 910925868351 | SM350C 27S/840 PSU PCS L1200 WH | 220–240 V | 20,5 W | Nej |
| 910925868354 | SM350C 40S/840 PSU PCS L1200 WH | 220–240 V | 30 W | Nej |
| 910925868357 | SM350C 27S/840 PSD PCS L1200 WH | 220–240 V | 21 W | Nej |
| 910925868360 | SM350C 40S/840 PSD PCS L1200 WH | 220–240 V | 31 W | Nej |
| 910925868369 | SM350C 27S/830 PSU PCS L1200 WH | 220–240 V | 20,5 W | Nej |
| 910925868371 | SM350C 40S/830 PSU PCS L1200 WH | 220–240 V | 30 W | Nej |
| 910925868373 | SM350C 27S/830 PSD PCS L1200 WH | 220–240 V | 21 W | Nej |

| Order Code | Full Product Name | Ingångsspänning | Strömförbrukning | Lämplig för slumpmässig brytning |
|--------------|---|-----------------|------------------|----------------------------------|
| 910925868375 | SM350C 40S/830 PSD PCS L1200 WH | 220–240 V | 31 W | Nej |
| 910925868352 | SM350C 27S/840 PSU PCS L1200 BK | 220–240 V | 20,5 W | Nej |
| 910925868355 | SM350C 40S/840 PSU PCS L1200 BK | 220–240 V | 30 W | Nej |
| 910925868358 | SM350C 27S/840 PSD PCS L1200 BK | 220–240 V | 21 W | Nej |
| 910925868361 | SM350C 40S/840 PSD PCS L1200 BK | 220–240 V | 31 W | Nej |
| 910925868389 | SM350X 27S/840 PSD L60L60 PCS WH | 220–240 V | 21 W | Nej |
| 910505103701 | SM351C 40S/840 PSU A PCS L1200 WH | 220–240 V | 30 W | Ej tillämpligt |
| 910505103702 | SM351C 40S/840 PSD A PCS L1200 WH | 220–240 V | 31 W | Ej tillämpligt |
| 910505103703 | SM351C 50S/840 PSU A PCS L1500 WH | 220–240 V | 37 W | Ej tillämpligt |
| 910505103704 | SM351C 50S/840 PSD A PCS L1500 WH | 220–240 V | 38 W | Ej tillämpligt |

Styrenheter och dimring

| Order Code | Full Product Name | Dimbar | Max. dimringsnivå |
|--------------|----------------------------------|--------|-------------------|
| 910925868390 | SM350X 27S/840 PSD PCS N BK | Ja | 1% |
| 910925868378 | SM350C 34S/840 PSU PCS L1500 BK | Nej | Inte tillämpbar |
| 910925868381 | SM350C 50S/840 PSU PCS L1500 BK | Nej | Inte tillämpbar |
| 910925868384 | SM350C 34S/840 PSD PCS L1500 BK | Ja | 1% |
| 910925868387 | SM350C 50S/840 PSD PCS L1500 BK | Ja | 1% |
| 910925868303 | SM350C 27S/840 PSU PCS L1200 ALU | Nej | Inte tillämpbar |
| 910925868353 | SM350C 40S/840 PSU PCS L1200 ALU | Nej | Inte tillämpbar |
| 910925868356 | SM350C 27S/840 PSD PCS L1200 ALU | Ja | 1% |
| 910925868359 | SM350C 40S/840 PSD PCS L1200 ALU | Ja | 1% |
| 910925868368 | SM350C 27S/830 PSU PCS L1200 ALU | Nej | Inte tillämpbar |
| 910925868370 | SM350C 40S/830 PSU PCS L1200 ALU | Nej | Inte tillämpbar |
| 910925868372 | SM350C 27S/830 PSD PCS L1200 ALU | Ja | 1% |
| 910925868374 | SM350C 40S/830 PSD PCS L1200 ALU | Ja | 1% |

| Order Code | Full Product Name | Dimbar | Max. dimringsnivå |
|--------------|-----------------------------------|--------|-------------------|
| 910925868388 | SM350X 27S/840 PSD L60L60 PCS ALU | Ja | 1% |
| 910925868376 | SM350C 34S/840 PSU PCS L1500 ALU | Nej | Inte tillämpbar |
| 910925868379 | SM350C 50S/840 PSU PCS L1500 ALU | Nej | Inte tillämpbar |
| 910925868382 | SM350C 34S/840 PSD PCS L1500 ALU | Ja | 1% |
| 910925868385 | SM350C 50S/840 PSD PCS L1500 ALU | Ja | 1% |
| 910925868377 | SM350C 34S/840 PSU PCS L1500 WH | Nej | Inte tillämpbar |
| 910925868380 | SM350C 50S/840 PSU PCS L1500 WH | Nej | Inte tillämpbar |
| 910925868383 | SM350C 34S/840 PSD PCS L1500 WH | Ja | 1% |
| 910925868386 | SM350C 50S/840 PSD PCS L1500 WH | Ja | 1% |
| 910925868362 | SM350C 27S/840 WIA PCS L1200 ALU | Nej | 1% |
| 910925868363 | SM350C 27S/840 WIA PCS L1200 WH | Nej | 1% |
| 910925868364 | SM350C 27S/840 WIA PCS L1200 BK | Nej | 1% |
| 910925868365 | SM350C 40S/840 WIA PCS L1200 ALU | Nej | 1% |

KeyLine nedpendlad

| Order Code | Full Product Name | Dimbar | Max. dimringsnivå |
|--------------|---------------------------------|--------|-------------------|
| 910925868366 | SM350C 40S/840 WIA PCS L1200 WH | Nej | 1% |
| 910925868367 | SM350C 40S/840 WIA PCS L1200 BK | Nej | 1% |
| 910925868351 | SM350C 27S/840 PSU PCS L1200 WH | Nej | Inte tillämpbar |
| 910925868354 | SM350C 40S/840 PSU PCS L1200 WH | Nej | Inte tillämpbar |
| 910925868357 | SM350C 27S/840 PSD PCS L1200 WH | Ja | 1% |
| 910925868360 | SM350C 40S/840 PSD PCS L1200 WH | Ja | 1% |
| 910925868369 | SM350C 27S/830 PSU PCS L1200 WH | Nej | Inte tillämpbar |
| 910925868371 | SM350C 40S/830 PSU PCS L1200 WH | Nej | Inte tillämpbar |
| 910925868373 | SM350C 27S/830 PSD PCS L1200 WH | Ja | 1% |
| 910925868375 | SM350C 40S/830 PSD PCS L1200 WH | Ja | 1% |

| Order Code | Full Product Name | Dimbar | Max. dimringsnivå |
|--------------|-----------------------------------|--------|-------------------|
| 910925868352 | SM350C 27S/840 PSU PCS L1200 BK | Nej | Inte tillämpbar |
| 910925868355 | SM350C 40S/840 PSU PCS L1200 BK | Nej | Inte tillämpbar |
| 910925868358 | SM350C 27S/840 PSD PCS L1200 BK | Ja | 1% |
| 910925868361 | SM350C 40S/840 PSD PCS L1200 BK | Ja | 1% |
| 910925868389 | SM350X 27S/840 PSD L60L60 PCS WH | Ja | 1% |
| 910505103701 | SM351C 40S/840 PSU A PCS L1200 WH | Nej | Inte tillämpbar |
| 910505103702 | SM351C 40S/840 PSD A PCS L1200 WH | - | 1% |
| 910505103703 | SM351C 50S/840 PSU A PCS L1500 WH | Nej | Inte tillämpbar |
| 910505103704 | SM351C 50S/840 PSD A PCS L1500 WH | - | 1% |

Mekanik och armaturhus

| Order Code | Full Product Name | Armaturhusets färg |
|--------------|-----------------------------------|--------------------|
| 910925868390 | SM350X 27S/840 PSD PCS N BK | Svart |
| 910925868378 | SM350C 34S/840 PSU PCS L1500 BK | Svart |
| 910925868381 | SM350C 50S/840 PSU PCS L1500 BK | Svart |
| 910925868384 | SM350C 34S/840 PSD PCS L1500 BK | Svart |
| 910925868387 | SM350C 50S/840 PSD PCS L1500 BK | Svart |
| 910925868303 | SM350C 27S/840 PSU PCS L1200 ALU | Aluminium |
| 910925868353 | SM350C 40S/840 PSU PCS L1200 ALU | Aluminium |
| 910925868356 | SM350C 27S/840 PSD PCS L1200 ALU | Aluminium |
| 910925868359 | SM350C 40S/840 PSD PCS L1200 ALU | Aluminium |
| 910925868368 | SM350C 27S/830 PSU PCS L1200 ALU | Aluminium |
| 910925868370 | SM350C 40S/830 PSU PCS L1200 ALU | Aluminium |
| 910925868372 | SM350C 27S/830 PSD PCS L1200 ALU | Aluminium |
| 910925868374 | SM350C 40S/830 PSD PCS L1200 ALU | Aluminium |
| 910925868388 | SM350X 27S/840 PSD L60L60 PCS ALU | Aluminium |
| 910925868376 | SM350C 34S/840 PSU PCS L1500 ALU | Aluminium |
| 910925868379 | SM350C 50S/840 PSU PCS L1500 ALU | Aluminium |
| 910925868382 | SM350C 34S/840 PSD PCS L1500 ALU | Aluminium |
| 910925868385 | SM350C 50S/840 PSD PCS L1500 ALU | Aluminium |
| 910925868377 | SM350C 34S/840 PSU PCS L1500 WH | Vit |
| 910925868380 | SM350C 50S/840 PSU PCS L1500 WH | Vit |
| 910925868383 | SM350C 34S/840 PSD PCS L1500 WH | Vit |
| 910925868386 | SM350C 50S/840 PSD PCS L1500 WH | Vit |
| 910925868362 | SM350C 27S/840 WIA PCS L1200 ALU | Aluminium |

| Order Code | Full Product Name | Armaturhusets färg |
|--------------|-----------------------------------|--------------------|
| 910925868363 | SM350C 27S/840 WIA PCS L1200 WH | Vit |
| 910925868364 | SM350C 27S/840 WIA PCS L1200 BK | Svart |
| 910925868365 | SM350C 40S/840 WIA PCS L1200 ALU | Aluminium |
| 910925868366 | SM350C 40S/840 WIA PCS L1200 WH | Vit |
| 910925868367 | SM350C 40S/840 WIA PCS L1200 BK | Svart |
| 910925868351 | SM350C 27S/840 PSU PCS L1200 WH | Vit |
| 910925868354 | SM350C 40S/840 PSU PCS L1200 WH | Vit |
| 910925868357 | SM350C 27S/840 PSD PCS L1200 WH | Vit |
| 910925868360 | SM350C 40S/840 PSD PCS L1200 WH | Vit |
| 910925868369 | SM350C 27S/830 PSU PCS L1200 WH | Vit |
| 910925868371 | SM350C 40S/830 PSU PCS L1200 WH | Vit |
| 910925868373 | SM350C 27S/830 PSD PCS L1200 WH | Vit |
| 910925868375 | SM350C 40S/830 PSD PCS L1200 WH | Vit |
| 910925868352 | SM350C 27S/840 PSU PCS L1200 BK | Svart |
| 910925868355 | SM350C 40S/840 PSU PCS L1200 BK | Svart |
| 910925868358 | SM350C 27S/840 PSD PCS L1200 BK | Svart |
| 910925868361 | SM350C 40S/840 PSD PCS L1200 BK | Svart |
| 910925868389 | SM350X 27S/840 PSD L60L60 PCS WH | Vit |
| 910505103701 | SM351C 40S/840 PSU A PCS L1200 WH | Vit |
| 910505103702 | SM351C 40S/840 PSD A PCS L1200 WH | Vit |
| 910505103703 | SM351C 50S/840 PSU A PCS L1500 WH | Vit |
| 910505103704 | SM351C 50S/840 PSD A PCS L1500 WH | Vit |

Nöddrift

| Order Code | Full Product Name | Central nödbelysning |
|--------------|----------------------------------|----------------------|
| 910925868390 | SM350X 27S/840 PSD PCS N BK | - |
| 910925868378 | SM350C 34S/840 PSU PCS L1500 BK | - |
| 910925868381 | SM350C 50S/840 PSU PCS L1500 BK | - |
| 910925868384 | SM350C 34S/840 PSD PCS L1500 BK | - |
| 910925868387 | SM350C 50S/840 PSD PCS L1500 BK | - |
| 910925868303 | SM350C 27S/840 PSU PCS L1200 ALU | - |
| 910925868353 | SM350C 40S/840 PSU PCS L1200 ALU | - |
| 910925868356 | SM350C 27S/840 PSD PCS L1200 ALU | - |
| 910925868359 | SM350C 40S/840 PSD PCS L1200 ALU | - |
| 910925868368 | SM350C 27S/830 PSU PCS L1200 ALU | - |

| Order Code | Full Product Name | Central nödbelysning |
|--------------|-----------------------------------|----------------------|
| 910925868370 | SM350C 40S/830 PSU PCS L1200 ALU | - |
| 910925868372 | SM350C 27S/830 PSD PCS L1200 ALU | - |
| 910925868374 | SM350C 40S/830 PSD PCS L1200 ALU | - |
| 910925868388 | SM350X 27S/840 PSD L60L60 PCS ALU | - |
| 910925868376 | SM350C 34S/840 PSU PCS L1500 ALU | - |
| 910925868379 | SM350C 50S/840 PSU PCS L1500 ALU | - |
| 910925868382 | SM350C 34S/840 PSD PCS L1500 ALU | - |
| 910925868385 | SM350C 50S/840 PSD PCS L1500 ALU | - |
| 910925868377 | SM350C 34S/840 PSU PCS L1500 WH | - |
| 910925868380 | SM350C 50S/840 PSU PCS L1500 WH | - |

KeyLine nedpendlad

| Order Code | Full Product Name | Central nödbelysning |
|--------------|----------------------------------|----------------------|
| 910925868383 | SM350C 34S/840 PSD PCS L1500 WH | - |
| 910925868386 | SM350C 50S/840 PSD PCS L1500 WH | - |
| 910925868362 | SM350C 27S/840 WIA PCS L1200 ALU | - |
| 910925868363 | SM350C 27S/840 WIA PCS L1200 WH | - |
| 910925868364 | SM350C 27S/840 WIA PCS L1200 BK | - |
| 910925868365 | SM350C 40S/840 WIA PCS L1200 ALU | - |
| 910925868366 | SM350C 40S/840 WIA PCS L1200 WH | - |
| 910925868367 | SM350C 40S/840 WIA PCS L1200 BK | - |
| 910925868351 | SM350C 27S/840 PSU PCS L1200 WH | - |
| 910925868354 | SM350C 40S/840 PSU PCS L1200 WH | - |
| 910925868357 | SM350C 27S/840 PSD PCS L1200 WH | - |
| 910925868360 | SM350C 40S/840 PSD PCS L1200 WH | - |
| 910925868369 | SM350C 27S/830 PSU PCS L1200 WH | - |

| Order Code | Full Product Name | Central nödbelysning |
|--------------|-----------------------------------|----------------------|
| 910925868371 | SM350C 40S/830 PSU PCS L1200 WH | - |
| 910925868373 | SM350C 27S/830 PSD PCS L1200 WH | - |
| 910925868375 | SM350C 40S/830 PSD PCS L1200 WH | - |
| 910925868352 | SM350C 27S/840 PSU PCS L1200 BK | - |
| 910925868355 | SM350C 40S/840 PSU PCS L1200 BK | - |
| 910925868358 | SM350C 27S/840 PSD PCS L1200 BK | - |
| 910925868361 | SM350C 40S/840 PSD PCS L1200 BK | - |
| 910925868389 | SM350X 27S/840 PSD L60L60 PCS WH | - |
| 910505103701 | SM351C 40S/840 PSU A PCS L1200 WH | Nej |
| 910505103702 | SM351C 40S/840 PSD A PCS L1200 WH | Nej |
| 910505103703 | SM351C 50S/840 PSU A PCS L1500 WH | Nej |
| 910505103704 | SM351C 50S/840 PSD A PCS L1500 WH | Nej |

Användning och godkännande

| Order Code | Full Product Name | Säkerhetsmärkning, antändlighet | Flimmervärde (PstLM) |
|--------------|-----------------------------------|--|----------------------|
| 910925868390 | SM350X 27S/840 PSD PCS N BK | För montering på normalt lättantändliga ytor | 1 |
| 910925868378 | SM350C 34S/840 PSU PCS L1500 BK | För montering på normalt lättantändliga ytor | 1 |
| 910925868381 | SM350C 50S/840 PSU PCS L1500 BK | För montering på normalt lättantändliga ytor | 1 |
| 910925868384 | SM350C 34S/840 PSD PCS L1500 BK | För montering på normalt lättantändliga ytor | 1 |
| 910925868387 | SM350C 50S/840 PSD PCS L1500 BK | För montering på normalt lättantändliga ytor | 1 |
| 910925868303 | SM350C 27S/840 PSU PCS L1200 ALU | För montering på normalt lättantändliga ytor | 1 |
| 910925868353 | SM350C 40S/840 PSU PCS L1200 ALU | För montering på normalt lättantändliga ytor | 1 |
| 910925868356 | SM350C 27S/840 PSD PCS L1200 ALU | För montering på normalt lättantändliga ytor | 1 |
| 910925868359 | SM350C 40S/840 PSD PCS L1200 ALU | För montering på normalt lättantändliga ytor | 1 |
| 910925868368 | SM350C 27S/830 PSU PCS L1200 ALU | För montering på normalt lättantändliga ytor | 1 |
| 910925868370 | SM350C 40S/830 PSU PCS L1200 ALU | För montering på normalt lättantändliga ytor | 1 |
| 910925868372 | SM350C 27S/830 PSD PCS L1200 ALU | För montering på normalt lättantändliga ytor | 1 |
| 910925868374 | SM350C 40S/830 PSD PCS L1200 ALU | För montering på normalt lättantändliga ytor | 1 |
| 910925868388 | SM350X 27S/840 PSD L60L60 PCS ALU | För montering på normalt lättantändliga ytor | 1 |
| 910925868376 | SM350C 34S/840 PSU PCS L1500 ALU | För montering på normalt lättantändliga ytor | 1 |
| 910925868379 | SM350C 50S/840 PSU PCS L1500 ALU | För montering på normalt lättantändliga ytor | 1 |

| Order Code | Full Product Name | Säkerhetsmärkning, antändlighet | Flimmervärde (PstLM) |
|--------------|----------------------------------|--|----------------------|
| 910925868382 | SM350C 34S/840 PSD PCS L1500 ALU | För montering på normalt lättantändliga ytor | 1 |
| 910925868385 | SM350C 50S/840 PSD PCS L1500 ALU | För montering på normalt lättantändliga ytor | 1 |
| 910925868377 | SM350C 34S/840 PSU PCS L1500 WH | För montering på normalt lättantändliga ytor | 1 |
| 910925868380 | SM350C 50S/840 PSU PCS L1500 WH | För montering på normalt lättantändliga ytor | 1 |
| 910925868383 | SM350C 34S/840 PSD PCS L1500 WH | För montering på normalt lättantändliga ytor | 1 |
| 910925868386 | SM350C 50S/840 PSD PCS L1500 WH | För montering på normalt lättantändliga ytor | 1 |
| 910925868362 | SM350C 27S/840 WIA PCS L1200 ALU | För montering på normalt lättantändliga ytor | 1 |
| 910925868363 | SM350C 27S/840 WIA PCS L1200 WH | För montering på normalt lättantändliga ytor | 1 |
| 910925868364 | SM350C 27S/840 WIA PCS L1200 BK | För montering på normalt lättantändliga ytor | 1 |
| 910925868365 | SM350C 40S/840 WIA PCS L1200 ALU | För montering på normalt lättantändliga ytor | 1 |
| 910925868366 | SM350C 40S/840 WIA PCS L1200 WH | För montering på normalt lättantändliga ytor | 1 |
| 910925868367 | SM350C 40S/840 WIA PCS L1200 BK | För montering på normalt lättantändliga ytor | 1 |
| 910925868351 | SM350C 27S/840 PSU PCS L1200 WH | För montering på normalt lättantändliga ytor | 1 |
| 910925868354 | SM350C 40S/840 PSU PCS L1200 WH | För montering på normalt lättantändliga ytor | 1 |
| 910925868357 | SM350C 27S/840 PSD PCS L1200 WH | För montering på normalt lättantändliga ytor | 1 |
| 910925868360 | SM350C 40S/840 PSD PCS L1200 WH | För montering på normalt lättantändliga ytor | 1 |
| 910925868369 | SM350C 27S/830 PSU PCS L1200 WH | För montering på normalt lättantändliga ytor | 1 |

KeyLine nedpendlad

| Order Code | Full Product Name | Säkerhetsmärkning, antändlighet | Flimmervärde (PstLM) |
|--------------|------------------------------------|--|----------------------|
| 910925868371 | SM350C 40S/830 PSU PCS L1200 WH | För montering på normalt lättantändliga ytor | 1 |
| 910925868373 | SM350C 27S/830 PSD PCS L1200 WH | För montering på normalt lättantändliga ytor | 1 |
| 910925868375 | SM350C 40S/830 PSD PCS L1200 WH | För montering på normalt lättantändliga ytor | 1 |
| 910925868352 | SM350C 27S/840 PSU PCS L1200 BK | För montering på normalt lättantändliga ytor | 1 |
| 910925868355 | SM350C 40S/840 PSU PCS L1200 BK | För montering på normalt lättantändliga ytor | 1 |
| 910925868358 | SM350C 27S/840 PSD PCS L1200 BK | För montering på normalt lättantändliga ytor | 1 |

| Order Code | Full Product Name | Säkerhetsmärkning, antändlighet | Flimmervärde (PstLM) |
|--------------|--------------------------------------|--|----------------------|
| 910925868361 | SM350C 40S/840 PSD PCS L1200 BK | För montering på normalt lättantändliga ytor | 1 |
| 910925868389 | SM350X 27S/840 PSD L60L60 PCS WH | För montering på normalt lättantändliga ytor | 1 |
| 910505103701 | SM351C 40S/840 PSU A PCS L1200 WH | - | - |
| 910505103702 | SM351C 40S/840 PSD A PCS L1200 WH | - | - |
| 910505103703 | SM351C 50S/840 PSU A PCS L1500 WH | - | - |
| 910505103704 | SM351C 50S/840 PSD A PCS L1500 WH | - | - |

Ursprunglig prestanda (IEC-kompatibel)

| Order Code | Full Product Name | Initial kromaticitet |
|--------------|-----------------------------------|----------------------|
| 910925868390 | SM350X 27S/840 PSD PCS N BK | (0.39, 0.38) SDCM <3 |
| 910925868378 | SM350C 34S/840 PSU PCS L1500 BK | (0.39, 0.38) SDCM <3 |
| 910925868381 | SM350C 50S/840 PSU PCS L1500 BK | (0.39, 0.38) SDCM <3 |
| 910925868384 | SM350C 34S/840 PSD PCS L1500 BK | (0.39, 0.38) SDCM <3 |
| 910925868387 | SM350C 50S/840 PSD PCS L1500 BK | (0.39, 0.38) SDCM <3 |
| 910925868303 | SM350C 27S/840 PSU PCS L1200 ALU | (0.39, 0.38) SDCM <3 |
| 910925868353 | SM350C 40S/840 PSU PCS L1200 ALU | (0.39, 0.38) SDCM <3 |
| 910925868356 | SM350C 27S/840 PSD PCS L1200 ALU | (0.39, 0.38) SDCM <3 |
| 910925868359 | SM350C 40S/840 PSD PCS L1200 ALU | (0.39, 0.38) SDCM <3 |
| 910925868368 | SM350C 27S/830 PSU PCS L1200 ALU | (0.43, 0.40) SDCM <3 |
| 910925868370 | SM350C 40S/830 PSU PCS L1200 ALU | (0.43, 0.40) SDCM <3 |
| 910925868372 | SM350C 27S/830 PSD PCS L1200 ALU | (0.43, 0.40) SDCM <3 |
| 910925868374 | SM350C 40S/830 PSD PCS L1200 ALU | (0.43, 0.40) SDCM <3 |
| 910925868388 | SM350X 27S/840 PSD L60L60 PCS ALU | (0.39, 0.38) SDCM <3 |
| 910925868376 | SM350C 34S/840 PSU PCS L1500 ALU | (0.39, 0.38) SDCM <3 |
| 910925868379 | SM350C 50S/840 PSU PCS L1500 ALU | (0.39, 0.38) SDCM <3 |
| 910925868382 | SM350C 34S/840 PSD PCS L1500 ALU | (0.39, 0.38) SDCM <3 |
| 910925868385 | SM350C 50S/840 PSD PCS L1500 ALU | (0.39, 0.38) SDCM <3 |
| 910925868377 | SM350C 34S/840 PSU PCS L1500 WH | (0.39, 0.38) SDCM <3 |
| 910925868380 | SM350C 50S/840 PSU PCS L1500 WH | (0.39, 0.38) SDCM <3 |
| 910925868383 | SM350C 34S/840 PSD PCS L1500 WH | (0.39, 0.38) SDCM <3 |
| 910925868386 | SM350C 50S/840 PSD PCS L1500 WH | (0.39, 0.38) SDCM <3 |
| 910925868362 | SM350C 27S/840 WIA PCS L1200 ALU | (0.39, 0.38) SDCM <3 |

| Order Code | Full Product Name | Initial kromaticitet |
|--------------|-----------------------------------|----------------------|
| 910925868363 | SM350C 27S/840 WIA PCS L1200 WH | (0.39, 0.38) SDCM <3 |
| 910925868364 | SM350C 27S/840 WIA PCS L1200 BK | (0.39, 0.38) SDCM <3 |
| 910925868365 | SM350C 40S/840 WIA PCS L1200 ALU | (0.39, 0.38) SDCM <3 |
| 910925868366 | SM350C 40S/840 WIA PCS L1200 WH | (0.39, 0.38) SDCM <3 |
| 910925868367 | SM350C 40S/840 WIA PCS L1200 BK | (0.39, 0.38) SDCM <3 |
| 910925868351 | SM350C 27S/840 PSU PCS L1200 WH | (0.39, 0.38) SDCM <3 |
| 910925868354 | SM350C 40S/840 PSU PCS L1200 WH | (0.39, 0.38) SDCM <3 |
| 910925868357 | SM350C 27S/840 PSD PCS L1200 WH | (0.39, 0.38) SDCM <3 |
| 910925868360 | SM350C 40S/840 PSD PCS L1200 WH | (0.39, 0.38) SDCM <3 |
| 910925868369 | SM350C 27S/830 PSU PCS L1200 WH | (0.43, 0.40) SDCM <3 |
| 910925868371 | SM350C 40S/830 PSU PCS L1200 WH | (0.43, 0.40) SDCM <3 |
| 910925868373 | SM350C 27S/830 PSD PCS L1200 WH | (0.43, 0.40) SDCM <3 |
| 910925868375 | SM350C 40S/830 PSD PCS L1200 WH | (0.43, 0.40) SDCM <3 |
| 910925868352 | SM350C 27S/840 PSU PCS L1200 BK | (0.39, 0.38) SDCM <3 |
| 910925868355 | SM350C 40S/840 PSU PCS L1200 BK | (0.39, 0.38) SDCM <3 |
| 910925868358 | SM350C 27S/840 PSD PCS L1200 BK | (0.39, 0.38) SDCM <3 |
| 910925868361 | SM350C 40S/840 PSD PCS L1200 BK | (0.39, 0.38) SDCM <3 |
| 910925868389 | SM350X 27S/840 PSD L60L60 PCS WH | (0.39, 0.38) SDCM <3 |
| 910505103701 | SM351C 40S/840 PSU A PCS L1200 WH | (0.39, 0.38) SDCM <3 |
| 910505103702 | SM351C 40S/840 PSD A PCS L1200 WH | (0.39, 0.38) SDCM <3 |
| 910505103703 | SM351C 50S/840 PSU A PCS L1500 WH | (0.39, 0.38) SDCM <3 |
| 910505103704 | SM351C 50S/840 PSD A PCS L1500 WH | (0.39, 0.38) SDCM <3 |

Produktdata

| Order Code | Full Product Name | Produktfamiljskod |
|--------------|----------------------------------|-------------------|
| 910925868390 | SM350X 27S/840 PSD PCS N BK | SM350X |
| 910925868378 | SM350C 34S/840 PSU PCS L1500 BK | SM350C |
| 910925868381 | SM350C 50S/840 PSU PCS L1500 BK | SM350C |
| 910925868384 | SM350C 34S/840 PSD PCS L1500 BK | SM350C |
| 910925868387 | SM350C 50S/840 PSD PCS L1500 BK | SM350C |
| 910925868303 | SM350C 27S/840 PSU PCS L1200 ALU | SM350C |
| 910925868353 | SM350C 40S/840 PSU PCS L1200 ALU | SM350C |

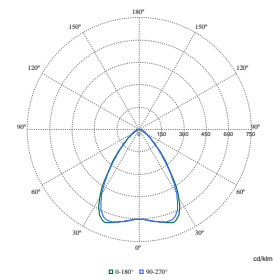
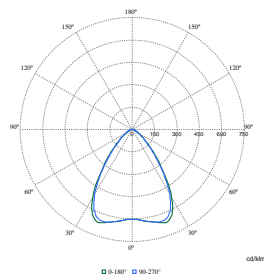
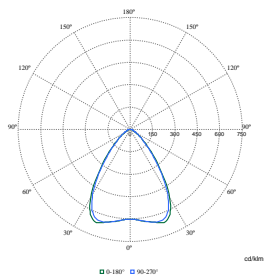
| Order Code | Full Product Name | Produktfamiljskod |
|--------------|-----------------------------------|-------------------|
| 910925868356 | SM350C 27S/840 PSD PCS L1200 ALU | SM350C |
| 910925868359 | SM350C 40S/840 PSD PCS L1200 ALU | SM350C |
| 910925868368 | SM350C 27S/830 PSU PCS L1200 ALU | SM350C |
| 910925868370 | SM350C 40S/830 PSU PCS L1200 ALU | SM350C |
| 910925868372 | SM350C 27S/830 PSD PCS L1200 ALU | SM350C |
| 910925868374 | SM350C 40S/830 PSD PCS L1200 ALU | SM350C |
| 910925868388 | SM350X 27S/840 PSD L60L60 PCS ALU | SM350X |

KeyLine nedpendlad

| Order Code | Full Product Name | Produktfamiljskod |
|--------------|----------------------------------|-------------------|
| 910925868376 | SM350C 34S/840 PSU PCS L1500 ALU | SM350C |
| 910925868379 | SM350C 50S/840 PSU PCS L1500 ALU | SM350C |
| 910925868382 | SM350C 34S/840 PSD PCS L1500 ALU | SM350C |
| 910925868385 | SM350C 50S/840 PSD PCS L1500 ALU | SM350C |
| 910925868377 | SM350C 34S/840 PSU PCS L1500 WH | SM350C |
| 910925868380 | SM350C 50S/840 PSU PCS L1500 WH | SM350C |
| 910925868383 | SM350C 34S/840 PSD PCS L1500 WH | SM350C |
| 910925868386 | SM350C 50S/840 PSD PCS L1500 WH | SM350C |
| 910925868362 | SM350C 27S/840 WIA PCS L1200 ALU | SM350C |
| 910925868363 | SM350C 27S/840 WIA PCS L1200 WH | SM350C |
| 910925868364 | SM350C 27S/840 WIA PCS L1200 BK | SM350C |
| 910925868365 | SM350C 40S/840 WIA PCS L1200 ALU | SM350C |
| 910925868366 | SM350C 40S/840 WIA PCS L1200 WH | SM350C |
| 910925868367 | SM350C 40S/840 WIA PCS L1200 BK | SM350C |
| 910925868351 | SM350C 27S/840 PSU PCS L1200 WH | SM350C |
| 910925868354 | SM350C 40S/840 PSU PCS L1200 WH | SM350C |

| Order Code | Full Product Name | Produktfamiljskod |
|--------------|-----------------------------------|-------------------|
| 910925868357 | SM350C 27S/840 PSD PCS L1200 WH | SM350C |
| 910925868360 | SM350C 40S/840 PSD PCS L1200 WH | SM350C |
| 910925868369 | SM350C 27S/830 PSU PCS L1200 WH | SM350C |
| 910925868371 | SM350C 40S/830 PSU PCS L1200 WH | SM350C |
| 910925868373 | SM350C 27S/830 PSD PCS L1200 WH | SM350C |
| 910925868375 | SM350C 40S/830 PSD PCS L1200 WH | SM350C |
| 910925868352 | SM350C 27S/840 PSU PCS L1200 BK | SM350C |
| 910925868355 | SM350C 40S/840 PSU PCS L1200 BK | SM350C |
| 910925868358 | SM350C 27S/840 PSD PCS L1200 BK | SM350C |
| 910925868361 | SM350C 40S/840 PSD PCS L1200 BK | SM350C |
| 910925868389 | SM350X 27S/840 PSD L60L60 PCS WH | SM350X |
| 910505103701 | SM351C 40S/840 PSU A PCS L1200 WH | SM350C |
| 910505103702 | SM351C 40S/840 PSD A PCS L1200 WH | SM350C |
| 910505103703 | SM351C 50S/840 PSU A PCS L1500 WH | SM350C |
| 910505103704 | SM351C 50S/840 PSD A PCS L1500 WH | SM350C |

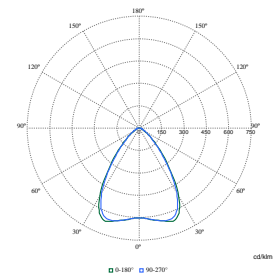
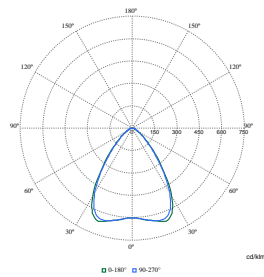
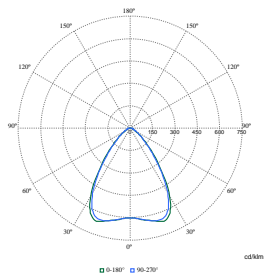
Polar Wide Diagrams



Polar Normal (separate) - SM350CI - 910925868303

Polar Normal (separate) - SM350CI - 910925868353

Polar Normal (separate) - SM350CI - 910925868366

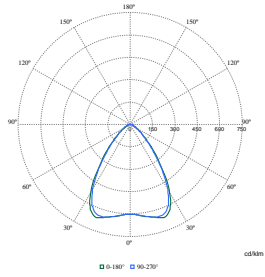


Polar Normal (separate) - SM350CI - 910925868379

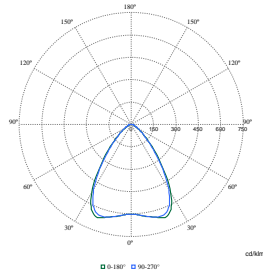
Polar Normal (separate) - SM350CI - 910925868355

Polar Normal (separate) - SM350CI - 910925868356

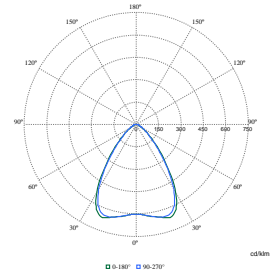
Polar Wide Diagrams



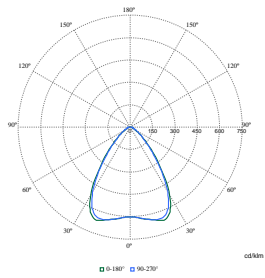
Polar Normal (separate) - SM350CI - 910925868383



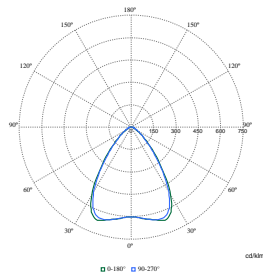
Polar Normal (separate) - SM350CI - 910925868352



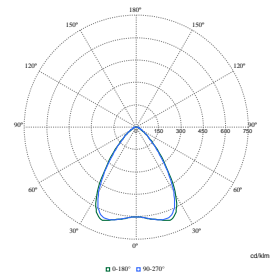
Polar Normal (separate) - SM350CI - 910925868359



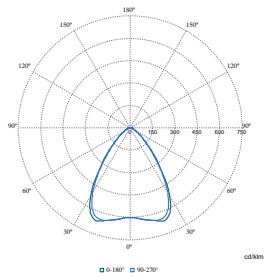
Polar Normal (separate) - SM350CI - 910925868363



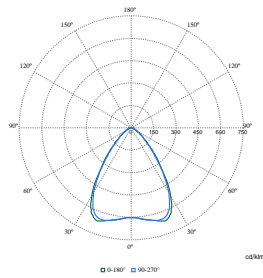
Polar Normal (separate) - SM350CI - 910925868375



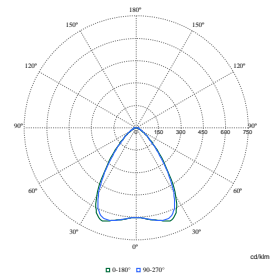
Polar Normal (separate) - SM350CI - 910925868381



Polar Normal (separate) - SM350CI - 910925868385

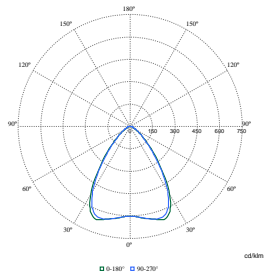


Polar Normal (separate) - SM350CI - 910925868388

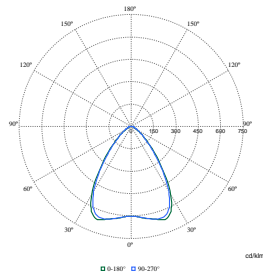


Polar Normal (separate) - SM350CI - 910925868389

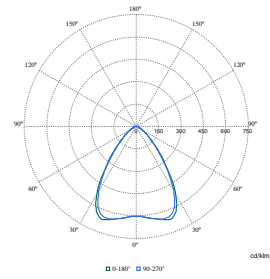
Polar Wide Diagrams



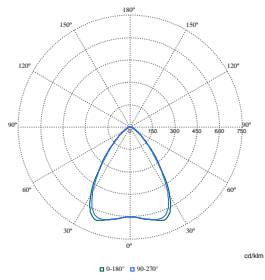
Polar Normal (separate) - SM350CI - 910925868354



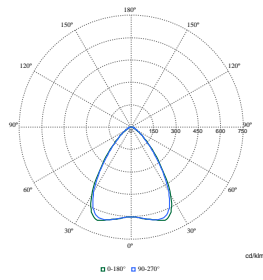
Polar Normal (separate) - SM350CI - 910925868387



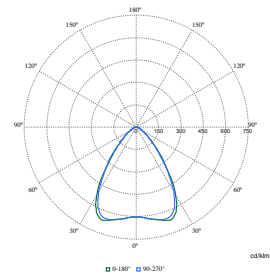
Polar Normal (separate) - SM350CI - 910925868362



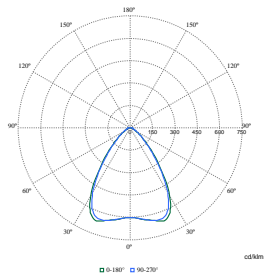
Polar Normal (separate) - SM350CI - 910925868365



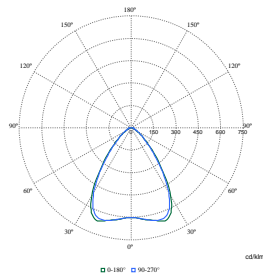
Polar Normal (separate) - SM350CI - 910925868370



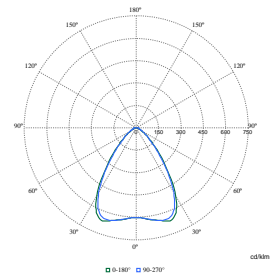
Polar Normal (separate) - SM350CI - 910925868384



Polar Normal (separate) - SM350CI - 910925868386

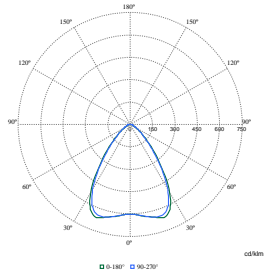


Polar Normal (separate) - SM350CI - 910925868360

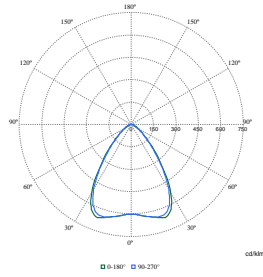


Polar Normal (separate) - SM350CI - 910925868361

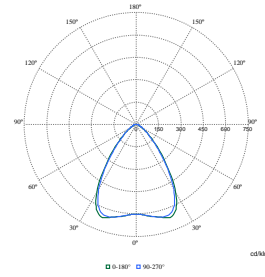
Polar Wide Diagrams



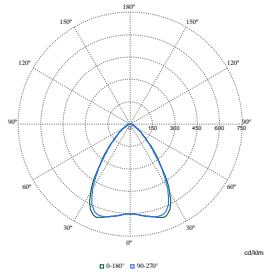
Polar Normal (separate) - SM350CI - 910925868367



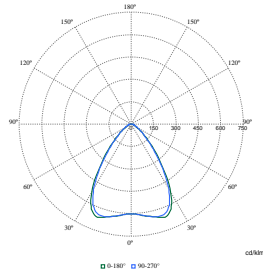
Polar Normal (separate) - SM350CI - 910925868357



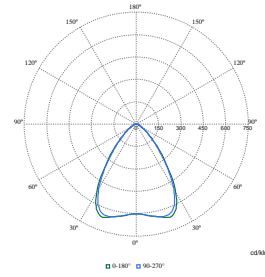
Polar Normal (separate) - SM350CI - 910925868368



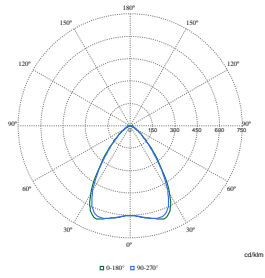
Polar Normal (separate) - SM350CI - 910925868358



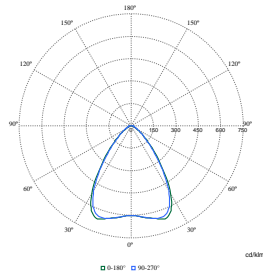
Polar Normal (separate) - SM350CI - 910925868364



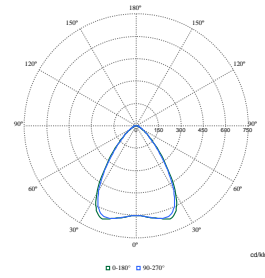
Polar Normal (separate) - SM350CI - 910925868372



Polar Normal (separate) - SM350CI - 910925868376

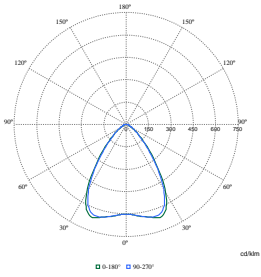


Polar Normal (separate) - SM350CI - 910925868378

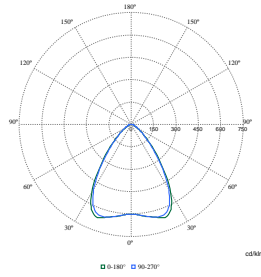


Polar Normal (separate) - SM350CI - 910925868380

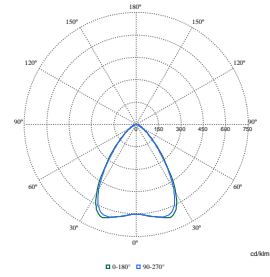
Polar Wide Diagrams



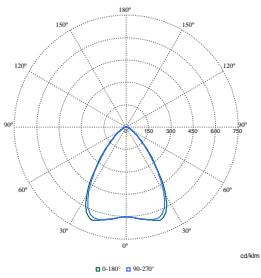
Polar Normal (separate) - SM350CI - 910925868351



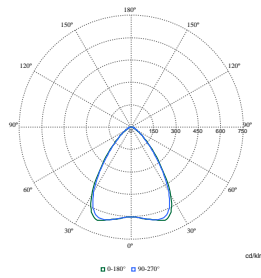
Polar Normal (separate) - SM350CI - 910925868369



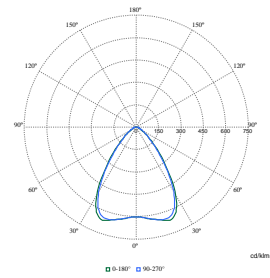
Polar Normal (separate) - SM350CI - 910925868371



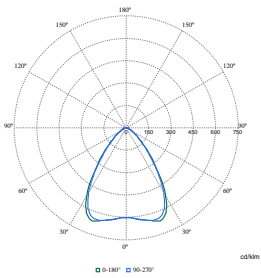
Polar Normal (separate) - SM350CI - 910925868374



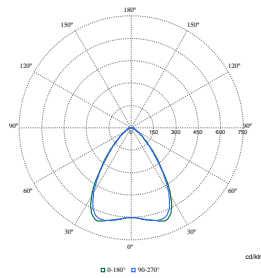
Polar Normal (separate) - SM350CI - 910925868373



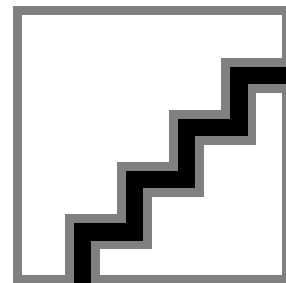
Polar Normal (separate) - SM350CI - 910925868377



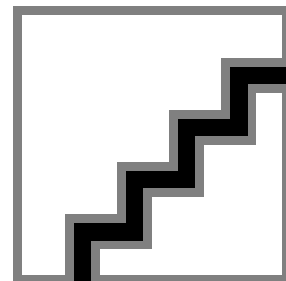
Polar Normal (separate) - SM350CI - 910925868382



Polar Normal (separate) - SM350CI - 910925868390



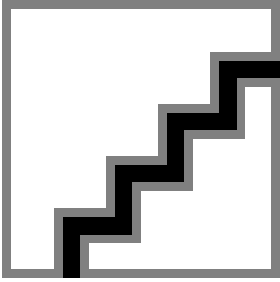
Polar Normal (separate) - null - 910505103701



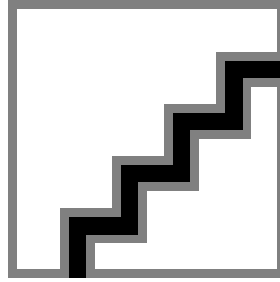
Polar Normal (separate) - null - 910505103702

KeyLine nedpendlad

Polar Wide Diagrams



Polar Normal (separate) - null - 910505103703



Polar Normal (separate) - null - 910505103704

