



The flexible light line

KeyLine, Surface & Suspended

These days, many office owners and office lighting designers prefer lines of light. The reason is simple. Not only do light lines come in a minimalistic design; they also offer far more choice and flexibility. Short or long lines and luminaires, standalone luminaires, different shapes and even a variety of colours; anything is possible. And with KeyLine, all these benefits come at a competitive price while still complying with office lighting norms. KeyLine is a superb light line range with a slim, minimalistic design and a high lumen output to illuminate the brightest office spaces. But with comfortable, low levels of glare it's also easy on the eye and complies with UGR19. This makes KeyLine ideal for linear applications, as well as standalone suspended or surface-mounted luminaires. A range that offers the ultimate flexibility and unlimited possibilities. KeyLine design flexibility comes in the form of different lengths, colours and light outputs – including L-shapes, as well as straight lines. All with high efficiency up to 130 lm/W, and the option to upgrade with wireless connectivity and control. Add to that attractive pricing, and with KeyLine you can also enjoy excellent value that ensures a superb total cost of ownership.

Benefits

- Suitable for office applications
- Excellent total cost of ownership
- Wide range of options to suit the demands of different offices

Features

- Comfortable, low glare: <UGR19 for the full range
- High lumen output, up to 4000lm for 1.2m version
- Interact Connectivity ready with wireless drivers
- Standard options in different lengths, colors and light outputs
- Customization options

Application

- Offices
- Retail
- Education

KeyLine, Surface & Suspended

Warnings and Safety

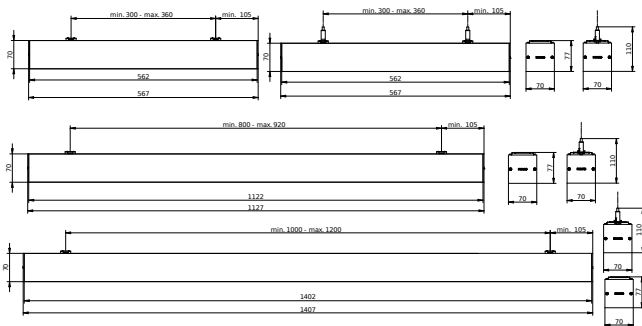
- KeyLine luminaires have an IP20 classification and are not protected against water ingress. We strongly recommend that the installation environment is checked for suitability.
- If – despite the IPX0 classification warning – luminaires are subject to water ingress, Philips and Signify cannot guarantee safety or prevent failure. In this case the product warranty does not apply and becomes void.

Versions



KeyLine suspended L1200, white

Dimensional drawing



Product details



KeyLine line coupling, alu



KeyLine line configuration, white

KeyLine, Surface & Suspended

Product details

KeyLine SM350C, white



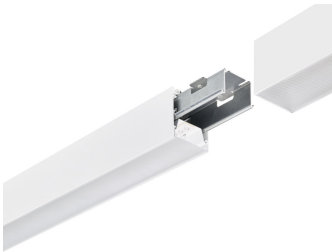
KeyLine configuration with L-corner SM350X

KeyLine line coupling, white



KeyLine alu with suspension set for suspended mounting

KeyLine white line coupling with coupling piece accessory



KeyLine alu with end-cap accessory

KeyLine white with coupling piece accessory for line mounting



KeyLine structured optics UGR19 (PCS)

KeyLine SM350C, alu



KeyLine, Surface & Suspended

Product details



KeyLine alu line coupling with coupling piece accessory



KeyLine alu with ceiling bracket accessory for surface mounting



KeyLine white with suspension set for suspended mounting



KeyLine white with ceiling bracket accessory for surface mounting



KeyLine white with end-cap accessory



KeyLine alu with coupling piece accessory for line mounting

KeyLine, Surface & Suspended

General Information	
Driver included	Yes
Light source replaceable	No
Number of gear units	1 unit
Service tag	Yes
Light Technical	
Beam angle of light source	120 degree(s)
Color rendering index (CRI)	>80
Optic type	Medium beam
Operating and Electrical	
Protection class IEC	Safety class I
Input Voltage	220 to 240 V
Line Frequency	50 to 60 Hz
Suitable for random switching	No
Mechanical and Housing	
Mech. impact protection code	IK06
Ingress protection code	IP20
Approval and Application	
Ambient temperature range	+10 to +35 °C
CE mark	Yes
ENEC mark	ENEC mark
Flammability mark	For mounting on normally flammable surfaces
Glow-wire test	Temperature 650 °C, duration 30 s
Flickering value (PstLM) - Flickering value as per EN 61000-3-3	1
Stroboscopic effect visibility measure (SVM)	0.4
Initial Performance (IEC Compliant)	
Luminous flux tolerance	+/-10%
Product Data	
Product family code	SM350C

Light Technical

Order Code	Full Product Name	Correlated Color	Luminous Efficacy	Luminous Flux
		Temperature (Nom)	(rated) (Nom)	
910925868353	SM350C 40S/840 PSU PCS L1200 ALU	4000 K	133 lm/W	4,000 lm
910925868356	SM350C 27S/840 PSD PCS L1200 ALU	4000 K	135 lm/W	2,700 lm
910925868374	SM350C 40S/830 PSD PCS L1200 ALU	3000 K	129 lm/W	4,000 lm
910925868354	SM350C 40S/840 PSU PCS L1200 WH	4000 K	133 lm/W	4,000 lm
910925868360	SM350C 40S/840 PSD PCS L1200 WH	4000 K	133 lm/W	4,000 lm
910925868369	SM350C 27S/830 PSU PCS L1200 WH	3000 K	132 lm/W	2,700 lm

Operating and Electrical

Order Code	Full Product Name	Power Consumption	Order Code	Full Product Name	Power Consumption
910925868353	SM350C 40S/840 PSU PCS L1200 ALU	30 W	910925868354	SM350C 40S/840 PSU PCS L1200 WH	30 W
910925868356	SM350C 27S/840 PSD PCS L1200 ALU	21 W	910925868360	SM350C 40S/840 PSD PCS L1200 WH	31 W
910925868374	SM350C 40S/830 PSD PCS L1200 ALU	31 W	910925868369	SM350C 27S/830 PSU PCS L1200 WH	20.5 W

Controls and Dimming

KeyLine, Surface & Suspended

Order Code	Full Product Name	Dimmable	Maximum dim level
910925868353	SM350C 40S/840 PSU PCS L1200 ALU	No	Not applicable
910925868356	SM350C 27S/840 PSD PCS L1200 ALU	Yes	1%
910925868374	SM350C 40S/830 PSD PCS L1200 ALU	Yes	1%

Order Code	Full Product Name	Dimmable	Maximum dim level
910925868354	SM350C 40S/840 PSU PCS L1200 WH	No	Not applicable
910925868360	SM350C 40S/840 PSD PCS L1200 WH	Yes	1%
910925868369	SM350C 27S/830 PSU PCS L1200 WH	No	Not applicable

Mechanical and Housing

Order Code	Full Product Name	Housing Color
910925868353	SM350C 40S/840 PSU PCS L1200 ALU	Aluminum
910925868356	SM350C 27S/840 PSD PCS L1200 ALU	Aluminum
910925868374	SM350C 40S/830 PSD PCS L1200 ALU	Aluminum

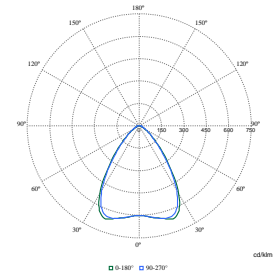
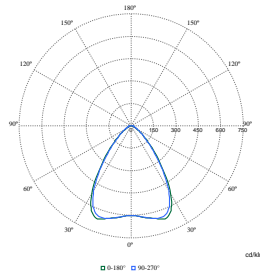
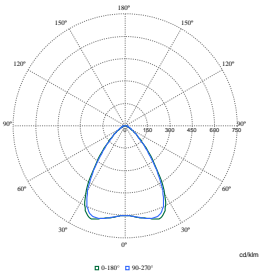
Order Code	Full Product Name	Housing Color
910925868354	SM350C 40S/840 PSU PCS L1200 WH	White
910925868360	SM350C 40S/840 PSD PCS L1200 WH	White
910925868369	SM350C 27S/830 PSU PCS L1200 WH	White

Initial Performance (IEC Compliant)

Order Code	Full Product Name	Initial chromaticity
910925868353	SM350C 40S/840 PSU PCS L1200 ALU	(0.39, 0.38) SDCM <3
910925868356	SM350C 27S/840 PSD PCS L1200 ALU	(0.39, 0.38) SDCM <3
910925868374	SM350C 40S/830 PSD PCS L1200 ALU	(0.43, 0.40) SDCM <3

Order Code	Full Product Name	Initial chromaticity
910925868354	SM350C 40S/840 PSU PCS L1200 WH	(0.39, 0.38) SDCM <3
910925868360	SM350C 40S/840 PSD PCS L1200 WH	(0.39, 0.38) SDCM <3
910925868369	SM350C 27S/830 PSU PCS L1200 WH	(0.43, 0.40) SDCM <3

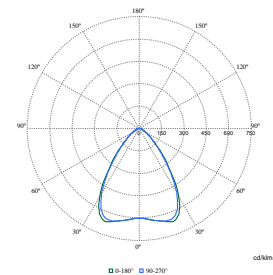
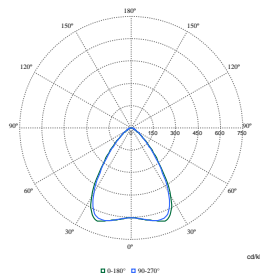
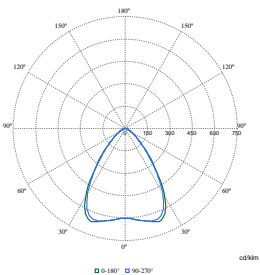
Polar Wide Diagrams



Polar Normal (separate) - SM350CI - 910925868353

Polar Normal (separate) - SM350CI - 910925868356

Polar Normal (separate) - SM350CI - 910925868354



Polar Normal (separate) - SM350CI - 910925868360

Polar Normal (separate) - SM350CI - 910925868369

Polar Normal (separate) - SM350CI - 910925868374

KeyLine, Surface & Suspended

