



The flexible light line

KeyLine, Surface & Suspended

These days, many office owners and office lighting designers prefer lines of light. The reason is simple. Not only do light lines come in a minimalistic design; they also offer far more choice and flexibility. Short or long lines and luminaires, standalone luminaires, different shapes and even a variety of colours; anything is possible. And with KeyLine, all these benefits come at a competitive price while still complying with office lighting norms. KeyLine is a superb light line range with a slim, minimalistic design and a high lumen output to illuminate the brightest office spaces. But with comfortable, low levels of glare it's also easy on the eye and complies with UGR19. This makes KeyLine ideal for linear applications, as well as standalone suspended or surface-mounted luminaires. A range that offers the ultimate flexibility and unlimited possibilities. KeyLine design flexibility comes in the form of different lengths, colours and light outputs – including L-shapes, as well as straight lines. All with high efficiency up to 130 lm/W, and the option to upgrade with wireless connectivity and control. Add to that attractive pricing, and with KeyLine you can also enjoy excellent value that ensures a superb total cost of ownership.

Benefits

- Suitable for office applications
- Excellent total cost of ownership
- Wide range of options to suit the demands of different offices

Features

- Comfortable, low glare: <UGR19 for the full range
- High lumen output, up to 4,000 lm for 1.2 m version
- Interact connectivity-ready with wireless drivers
- Standard options in different lengths, colours and light outputs
- Customisation options

Application

- Offices
- Retail
- Education

KeyLine, Surface & Suspended

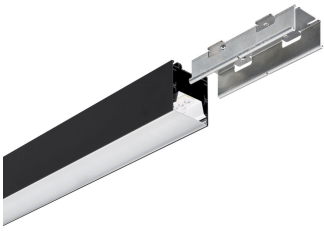
Product details



KeyLine line coupling, alu



KeyLine black with ceiling bracket
accessory for surface mounting



KeyLine black with coupling piece
accessory for line mounting



KeyLine_SM350C_WIA_DPP1



KeyLine line configuration, white



KeyLine SM350C, white



KeyLine configuration with L-
corner SM350X



KeyLine black with end-cap
accessory



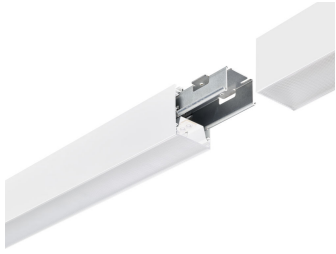
KeyLine line coupling, white



KeyLine alu with suspension set
for suspended mounting

KeyLine, Surface & Suspended

Product details



KeyLine white line coupling with coupling piece accessory

KeyLine_SM350C_WIA_DPP3



KeyLine alu with end-cap accessory



KeyLine white with coupling piece accessory for line mounting



KeyLine structured optics UGR19 (PCS)

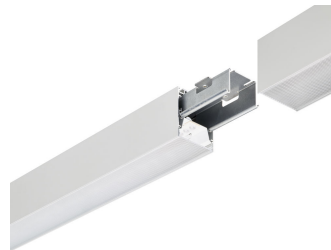


KeyLine line coupling, black



KeyLine SM350C, alu

KeyLine alu line coupling with coupling piece accessory



KeyLine line configuration, black

KeyLine alu with ceiling bracket accessory for surface mounting



KeyLine, Surface & Suspended

Product details



KeyLine white with suspension set for suspended mounting



KeyLine white with ceiling bracket accessory for surface mounting



KeyLine white with end-cap accessory



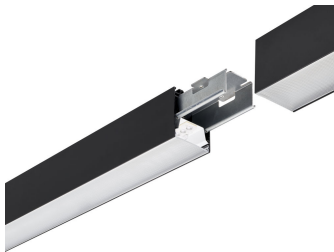
KeyLine alu with coupling piece accessory for line mounting



KeyLine SM350C, black



KeyLine L-corner, black



KeyLine black line coupling with coupling piece accessory



KeyLine black with suspension set for suspended mounting



KeyLine_SM350C_WIA_DPP2

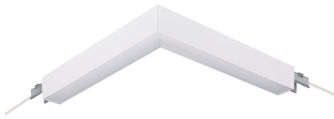


KeyLine L-corner, alu

KeyLine, Surface & Suspended

Product details

KeyLine L-corner, white



General Information

Driver included	Yes
Light source replaceable	No
Number of gear units	Unit
Service Tag	Yes

Light Technical

Beam angle of light source	120 degree(s)
Correlated Colour Temperature (Nom)	4000 K
Colour rendering index (CRI)	>80
Optic type	Medium beam

Operating and Electrical

Protection class IEC	Safety class I
Input Voltage	220 to 240 V
Line Frequency	50 to 60 Hz
Suitable for random switching	No

Mechanical and Housing

Mech. impact protection code	IK06
Ingress protection code	IP20

Approval and Application

Ambient temperature range	+10 to +35 °C
CE mark	Yes
ENEC mark	ENEC mark
Flammability mark	For mounting on normally flammable surfaces
Glow-wire test	Temperature 650 °C, duration 30 s
Flickering value (PstLM)	1
Stroboscopic effect	0.4

Initial Performance (IEC Compliant)

Initial chromaticity	(0.39, 0.38) SDCM <3
Luminous flux tolerance	+/-10%

Light Technical

Order Code	Full Product Name	Luminous efficacy (rated) (nom.)	Luminous Flux
910925868390	SM350X 27S/840 PSD PCS N BK	135 lm/W	2,700 lm
910925868381	SM350C 50S/840 PSU PCS L1500 BK	135 lm/W	5,000 lm
910925868387	SM350C 50S/840 PSD PCS L1500 BK	135 lm/W	5,000 lm
910925868356	SM350C 27S/840 PSD PCS L1200 ALU	135 lm/W	2,700 lm
910925868359	SM350C 40S/840 PSD PCS L1200 ALU	133 lm/W	4,000 lm
910925868388	SM350X 27S/840 PSD L60L60 PCS ALU	135 lm/W	2,700 lm
910925868379	SM350C 50S/840 PSU PCS L1500 ALU	135 lm/W	5,000 lm
910925868385	SM350C 50S/840 PSD PCS L1500 ALU	135 lm/W	5,000 lm
910925868380	SM350C 50S/840 PSU PCS L1500 WH	135 lm/W	5,000 lm
910925868386	SM350C 50S/840 PSD PCS L1500 WH	135 lm/W	5,000 lm
910925868362	SM350C 27S/840 WIA PCS L1200 ALU	138 lm/W	2,700 lm
910925868363	SM350C 27S/840 WIA PCS L1200 WH	138 lm/W	2,700 lm
910925868364	SM350C 27S/840 WIA PCS L1200 BK	138 lm/W	2,700 lm
910925868365	SM350C 40S/840 WIA PCS L1200 ALU	133 lm/W	4,000 lm
910925868366	SM350C 40S/840 WIA PCS L1200 WH	133 lm/W	4,000 lm
910925868367	SM350C 40S/840 WIA PCS L1200 BK	133 lm/W	4,000 lm
910925868357	SM350C 27S/840 PSD PCS L1200 WH	135 lm/W	2,700 lm
910925868360	SM350C 40S/840 PSD PCS L1200 WH	133 lm/W	4,000 lm
910925868358	SM350C 27S/840 PSD PCS L1200 BK	135 lm/W	2,700 lm
910925868361	SM350C 40S/840 PSD PCS L1200 BK	133 lm/W	4,000 lm
910925868389	SM350X 27S/840 PSD L60L60 PCS WH	135 lm/W	2,700 lm

Operating and Electrical

KeyLine, Surface & Suspended

Order Code	Full Product Name	Power Consumption
910925868390	SM350X 27S/840 PSD PCS N BK	21 W
910925868381	SM350C 50S/840 PSU PCS L1500 BK	36.5 W
910925868387	SM350C 50S/840 PSD PCS L1500 BK	38 W
910925868356	SM350C 27S/840 PSD PCS L1200 ALU	21 W
910925868359	SM350C 40S/840 PSD PCS L1200 ALU	31 W
910925868388	SM350X 27S/840 PSD L60L60 PCS ALU	21 W
910925868379	SM350C 50S/840 PSU PCS L1500 ALU	36.5 W
910925868385	SM350C 50S/840 PSD PCS L1500 ALU	38 W
910925868380	SM350C 50S/840 PSU PCS L1500 WH	36.5 W
910925868386	SM350C 50S/840 PSD PCS L1500 WH	38 W
910925868362	SM350C 27S/840 WIA PCS L1200 ALU	20.5 W

Order Code	Full Product Name	Power Consumption
910925868363	SM350C 27S/840 WIA PCS L1200 WH	20.5 W
910925868364	SM350C 27S/840 WIA PCS L1200 BK	20.5 W
910925868365	SM350C 40S/840 WIA PCS L1200 ALU	30 W
910925868366	SM350C 40S/840 WIA PCS L1200 WH	30 W
910925868367	SM350C 40S/840 WIA PCS L1200 BK	30 W
910925868357	SM350C 27S/840 PSD PCS L1200 WH	21 W
910925868360	SM350C 40S/840 PSD PCS L1200 WH	31 W
910925868358	SM350C 27S/840 PSD PCS L1200 BK	21 W
910925868361	SM350C 40S/840 PSD PCS L1200 BK	31 W
910925868389	SM350X 27S/840 PSD L60L60 PCS WH	21 W

Controls and Dimming

Order Code	Full Product Name	Maximum dim	
		Dimmable	level
910925868390	SM350X 27S/840 PSD PCS N BK	Yes	1%
910925868381	SM350C 50S/840 PSU PCS L1500 BK	No	Not applicable
910925868387	SM350C 50S/840 PSD PCS L1500 BK	Yes	1%
910925868356	SM350C 27S/840 PSD PCS L1200 ALU	Yes	1%
910925868359	SM350C 40S/840 PSD PCS L1200 ALU	Yes	1%
910925868388	SM350X 27S/840 PSD L60L60 PCS ALU	Yes	1%
910925868379	SM350C 50S/840 PSU PCS L1500 ALU	No	Not applicable
910925868385	SM350C 50S/840 PSD PCS L1500 ALU	Yes	1%
910925868380	SM350C 50S/840 PSU PCS L1500 WH	No	Not applicable
910925868386	SM350C 50S/840 PSD PCS L1500 WH	Yes	1%
910925868362	SM350C 27S/840 WIA PCS L1200 ALU	No	1%

Order Code	Full Product Name	Maximum dim	
		Dimmable	level
910925868363	SM350C 27S/840 WIA PCS L1200 WH	No	1%
910925868364	SM350C 27S/840 WIA PCS L1200 BK	No	1%
910925868365	SM350C 40S/840 WIA PCS L1200 ALU	No	1%
910925868366	SM350C 40S/840 WIA PCS L1200 WH	No	1%
910925868367	SM350C 40S/840 WIA PCS L1200 BK	No	1%
910925868357	SM350C 27S/840 PSD PCS L1200 WH	Yes	1%
910925868360	SM350C 40S/840 PSD PCS L1200 WH	Yes	1%
910925868358	SM350C 27S/840 PSD PCS L1200 BK	Yes	1%
910925868361	SM350C 40S/840 PSD PCS L1200 BK	Yes	1%
910925868389	SM350X 27S/840 PSD L60L60 PCS WH	Yes	1%

Mechanical and Housing

Order Code	Full Product Name	Housing Colour
910925868390	SM350X 27S/840 PSD PCS N BK	Black
910925868381	SM350C 50S/840 PSU PCS L1500 BK	Black
910925868387	SM350C 50S/840 PSD PCS L1500 BK	Black
910925868356	SM350C 27S/840 PSD PCS L1200 ALU	Aluminium
910925868359	SM350C 40S/840 PSD PCS L1200 ALU	Aluminium
910925868388	SM350X 27S/840 PSD L60L60 PCS ALU	Aluminium
910925868379	SM350C 50S/840 PSU PCS L1500 ALU	Aluminium
910925868385	SM350C 50S/840 PSD PCS L1500 ALU	Aluminium
910925868380	SM350C 50S/840 PSU PCS L1500 WH	White
910925868386	SM350C 50S/840 PSD PCS L1500 WH	White
910925868362	SM350C 27S/840 WIA PCS L1200 ALU	Aluminium

Order Code	Full Product Name	Housing Colour
910925868363	SM350C 27S/840 WIA PCS L1200 WH	White
910925868364	SM350C 27S/840 WIA PCS L1200 BK	Black
910925868365	SM350C 40S/840 WIA PCS L1200 ALU	Aluminium
910925868366	SM350C 40S/840 WIA PCS L1200 WH	White
910925868367	SM350C 40S/840 WIA PCS L1200 BK	Black
910925868357	SM350C 27S/840 PSD PCS L1200 WH	White
910925868360	SM350C 40S/840 PSD PCS L1200 WH	White
910925868358	SM350C 27S/840 PSD PCS L1200 BK	Black
910925868361	SM350C 40S/840 PSD PCS L1200 BK	Black
910925868389	SM350X 27S/840 PSD L60L60 PCS WH	White

Product Data

Order Code	Full Product Name	Product family code
910925868390	SM350X 27S/840 PSD PCS N BK	SM350X
910925868381	SM350C 50S/840 PSU PCS L1500 BK	SM350C
910925868387	SM350C 50S/840 PSD PCS L1500 BK	SM350C
910925868356	SM350C 27S/840 PSD PCS L1200 ALU	SM350C
910925868359	SM350C 40S/840 PSD PCS L1200 ALU	SM350C

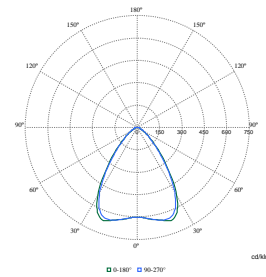
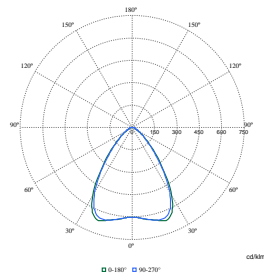
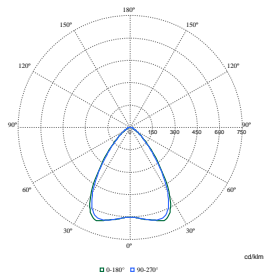
Order Code	Full Product Name	Product family code
910925868388	SM350X 27S/840 PSD L60L60 PCS ALU	SM350X
910925868379	SM350C 50S/840 PSU PCS L1500 ALU	SM350C
910925868385	SM350C 50S/840 PSD PCS L1500 ALU	SM350C
910925868380	SM350C 50S/840 PSU PCS L1500 WH	SM350C
910925868386	SM350C 50S/840 PSD PCS L1500 WH	SM350C

KeyLine, Surface & Suspended

Order Code	Full Product Name	Product family code
910925868362	SM350C 27S/840 WIA PCS L1200 ALU	SM350C
910925868363	SM350C 27S/840 WIA PCS L1200 WH	SM350C
910925868364	SM350C 27S/840 WIA PCS L1200 BK	SM350C
910925868365	SM350C 40S/840 WIA PCS L1200 ALU	SM350C
910925868366	SM350C 40S/840 WIA PCS L1200 WH	SM350C
910925868367	SM350C 40S/840 WIA PCS L1200 BK	SM350C

Order Code	Full Product Name	Product family code
910925868357	SM350C 27S/840 PSD PCS L1200 WH	SM350C
910925868360	SM350C 40S/840 PSD PCS L1200 WH	SM350C
910925868358	SM350C 27S/840 PSD PCS L1200 BK	SM350C
910925868361	SM350C 40S/840 PSD PCS L1200 BK	SM350C
910925868389	SM350X 27S/840 PSD L60L60 PCS WH	SM350X

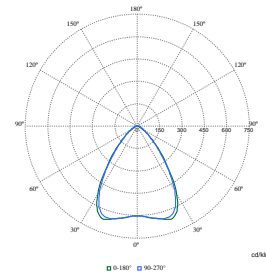
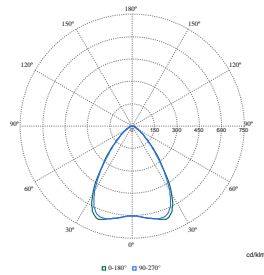
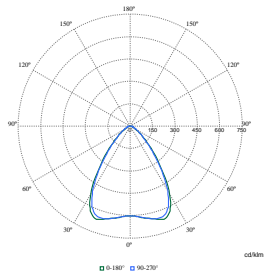
Polar Wide Diagrams



Polar Normal (separate) - SM350CI - 910925868366

Polar Normal (separate) - SM350CI - 910925868379

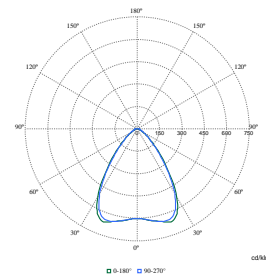
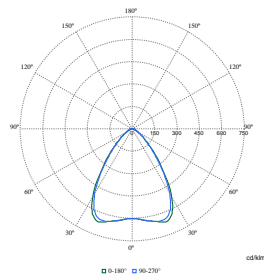
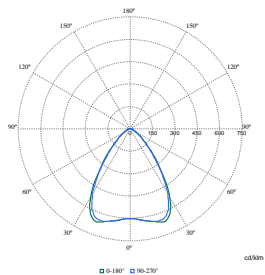
Polar Normal (separate) - SM350CI - 910925868356



Polar Normal (separate) - SM350CI - 910925868359

Polar Normal (separate) - SM350CI - 910925868363

Polar Normal (separate) - SM350CI - 910925868381

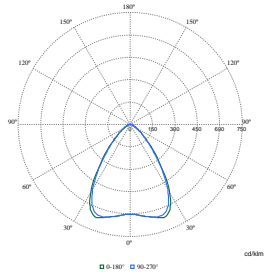


Polar Normal (separate) - SM350CI - 910925868385

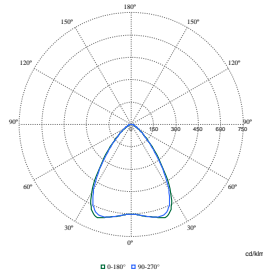
Polar Normal (separate) - SM350CI - 910925868388

Polar Normal (separate) - SM350CI - 910925868389

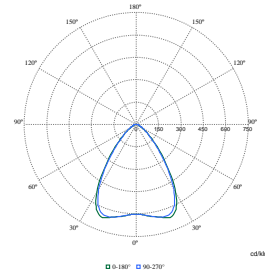
Polar Wide Diagrams



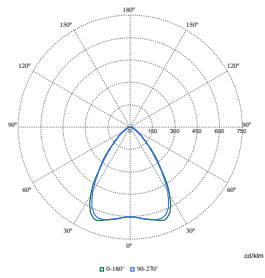
Polar Normal (separate) - SM350CI - 910925868387



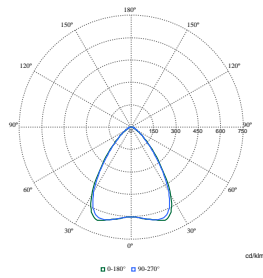
Polar Normal (separate) - SM350CI - 910925868362



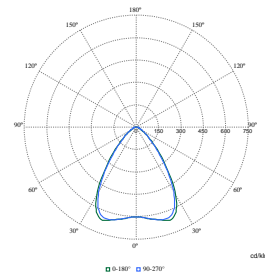
Polar Normal (separate) - SM350CI - 910925868365



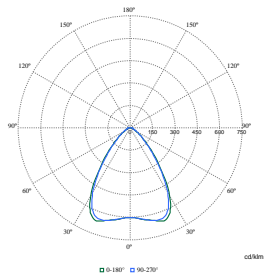
Polar Normal (separate) - SM350CI - 910925868386



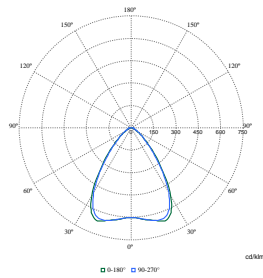
Polar Normal (separate) - SM350CI - 910925868360



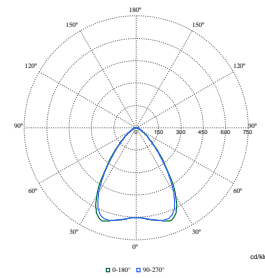
Polar Normal (separate) - SM350CI - 910925868361



Polar Normal (separate) - SM350CI - 910925868367



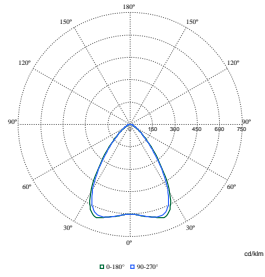
Polar Normal (separate) - SM350CI - 910925868357



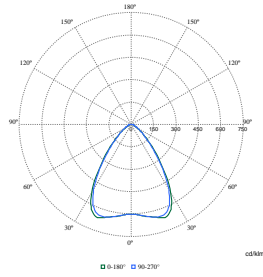
Polar Normal (separate) - SM350CI - 910925868358

KeyLine, Surface & Suspended

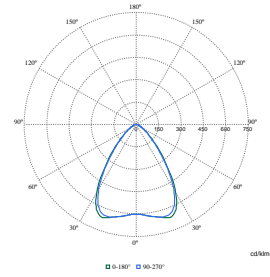
Polar Wide Diagrams



**Polar Normal (separate) - SM350CI -
910925868364**



**Polar Normal (separate) - SM350CI -
910925868380**



**Polar Normal (separate) - SM350CI -
910925868390**

