



The flexible light line

KeyLine, Surface & Suspended

These days, many office owners and office lighting designers prefer lines of light. The reason is simple. Not only do light lines come in a minimalistic design; they also offer far more choice and flexibility. Short or long lines and luminaires, standalone luminaires, different optics including asymmetric, different shapes and even a variety of colors; anything is possible. And with KeyLine, all these benefits come at a competitive price while still complying with office lighting norms. KeyLine is a superb light line range with a slim, minimalistic design and a high lumen output to illuminate the brightest office spaces. But with comfortable, low levels of glare it's also easy on the eye and complies with UGR19. That makes KeyLine ideal for linear applications, as well as standalone suspended or surface-mounted luminaires (Accessories to be ordered separately). A range that offers the ultimate flexibility and unlimited possibilities. KeyLine design flexibility comes in the form of different lengths, colors and light outputs - including L-shapes, as well as straight lines. All with high efficiency up to 142 lm/W, and the option to upgrade with wireless connectivity and control. Add to that attractive pricing, and with KeyLine you can also enjoy excellent value that ensures a superb total cost of ownership.

Benefits

- Suitable for office applications
- Excellent total cost of ownership
- Wide range of options to suit the demands of different offices

Features

- Comfortable, low glare: <UGR19 for the full range
- High lumen output, up to 4000lm for 1.2m version
- Interact Connectivity ready with wireless drivers
- Standard options in different lengths, colors and light outputs
- Customization options

KeyLine, Surface & Suspended

Application

- Offices
- Retail
- Education

Warnings and Safety

- KeyLine luminaires have an IP20 classification and are not protected against water ingress. We strongly recommend that the installation environment is checked for suitability.
- If – despite the IPX0 classification warning – luminaires are subject to water ingress, Philips and Signify cannot guarantee safety or prevent failure. In this case the product warranty does not apply and becomes void.

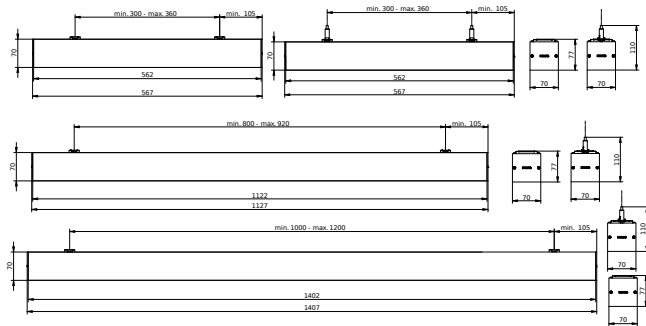
Versions



KeyLine suspended L1500, bk

KeyLine suspended L1200, white

Dimensional drawing

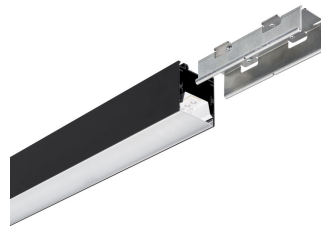


Product details

KeyLine black with ceiling bracket accessory for surface mounting



KeyLine black with coupling piece accessory for line mounting



KeyLine, Surface & Suspended

Product details



KeyLine line configuration, white



KeyLine SM350C, white



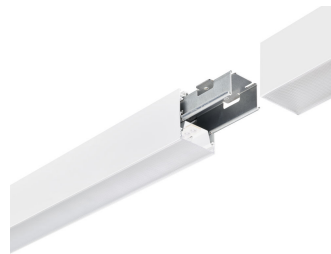
KeyLine configuration with L-corner SM350X



KeyLine black with end-cap accessory



KeyLine line coupling, white



KeyLine white line coupling with coupling piece accessory



KeyLine white with coupling piece accessory for line mounting



KeyLine structured optics UGR19 (PCS)



KeyLine line coupling, black

KeyLine, Surface & Suspended

Product details



KeyLine line configuration, black



KeyLine white with suspension set for suspended mounting



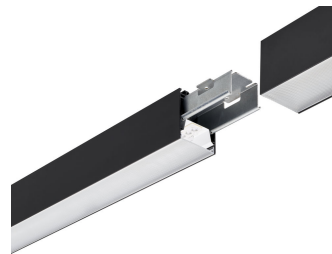
KeyLine white with ceiling bracket accessory for surface mounting



KeyLine white with end-cap accessory



KeyLine SM350C, black



KeyLine black line coupling with coupling piece accessory



KeyLine black with suspension set for suspended mounting

KeyLine, Surface & Suspended

General Information

Driver included	Yes
Light source replaceable	No
Number of gear units	1 unit
Service tag	Yes

Light Technical

Beam angle of light source	120 degree(s)
Correlated Color Temperature (Nom)	4000 K
Color rendering index (CRI)	>80
Optic type	Medium beam

Operating and Electrical

Protection class IEC	Safety class I
Input Voltage	220 to 240 V
Line Frequency	50 to 60 Hz
Suitable for random switching	No

Mechanical and Housing

Mech. impact protection code	IK06
Ingress protection code	IP20

Approval and Application

Ambient temperature range	+10 to +35 °C
CE mark	Yes
ENEC mark	ENEC mark
Flammability mark	For mounting on normally flammable surfaces
Glow-wire test	Temperature 650 °C, duration 30 s
Flickering value (PstLM) - Flickering value as per EN 61000-3-3	1
Stroboscopic effect visibility measure (SVM)	0.4

Initial Performance (IEC Compliant)

Initial chromaticity	(0.39, 0.38) SDCM <3
Luminous flux tolerance	+/-10%

Product Data

Product family code	SM350C
---------------------	--------

Light Technical

Order Code	Full Product Name	Luminous Efficacy (rated) (Nom)	Luminous Flux
910925868378	SM350C 34S/840 PSU PCS L1500 BK	142 lm/W	3,400 lm
910925868357	SM350C 27S/840 PSD PCS L1200 WH	135 lm/W	2,700 lm

Operating and Electrical

Order Code	Full Product Name	Power Consumption	Order Code	Full Product Name	Power Consumption
910925868378	SM350C 34S/840 PSU PCS L1500 BK	25 W	910925868357	SM350C 27S/840 PSD PCS L1200 WH	21 W

Controls and Dimming

KeyLine, Surface & Suspended

Order Code	Full Product Name	Dimmable	Maximum dim level
910925868378	SM350C 34S/840 PSU PCS L1500 BK	No	Not applicable

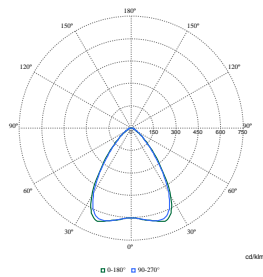
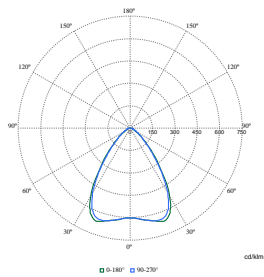
Order Code	Full Product Name	Dimmable	Maximum dim level
910925868357	SM350C 27S/840 PSD PCS L1200 WH	Yes	1%

Mechanical and Housing

Order Code	Full Product Name	Housing Color
910925868378	SM350C 34S/840 PSU PCS L1500 BK	Black

Order Code	Full Product Name	Housing Color
910925868357	SM350C 27S/840 PSD PCS L1200 WH	White

Polar Wide Diagrams



Polar Normal (separate) - SM350CI -
910925868357

Polar Normal (separate) - SM350CI -
910925868378

