



FlexBlend heading the way to efficient and flexible furnished offices areas

FlexBlend, Surface-Mounted

Philips FlexBlend is an attractive family of surface mounted and suspended luminaires, next to Flexblend recessed. The luminaire range is enabling building owners to advance their lighting operations, by offering office-compliant lighting with a return on investment of less than 3 years. FlexBlend provides the required flexibility through the adaptability in design. This gives the possibility to install the luminaires easily in the field, at any moment. Even when today's luminaire is suspended, tomorrow this can be adapted to a surface mounted installation at the venue. And the other way around. . The surface-mounted and suspended luminaire range fits many different office spaces like open plan offices, corridors, reception areas or meeting rooms. FlexBlend is offered in both lines and as standalone, using the same lighting module. This gives the option to the users to use FlexBlend as standalone now, and tomorrow, as line. The controller is integrated in the luminaire. As technology is changing fast, the ideal lighting solution is also expected to be ready to incorporate innovations that can help optimise operations further. For this reason, FlexBlend holds all connectivity and future ready options available. As System Ready luminaire it can be paired with lighting management systems such as the Philips Interact Office wired (PoE) and Interact Office wireless and/or existing and upcoming sensor innovations. The luminaire range is therefore future ready and can be delivered without any system component, and in a next phase, in the field to be upgraded. An attractive opportunity for new installations and renovations.

FlexBlend, Surface-Mounted

Benefits

- Return of investment less than three years
- A flexible office, with application flexibility to the choice of luminaires to fit many office areas
- Future ready: scalable and ready to be connected to controls and lighting systems

Features

- Fully office-compliant (UGR <19, L65 < 3,000 cd/sm), light level according to office application requirements
- Homogenous and uniform light effect
- Various mounting options, dimensional variety and local options
- Integrated sensors
- Ready to be connected to software-based lighting systems, such as Interact Office

Application

- Offices
- Education
- Healthcare

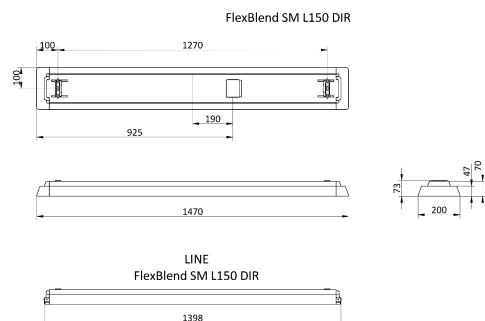
Warnings and Safety

- The product is IPX0 and as such is not protected against water ingress, so we strongly recommend that the environment in which the luminaire is to be installed is suitably checked
- If the above advice is not followed and the luminaires are subject to water ingress, Philips/Signify cannot guarantee safe use and the product warranty will become void

Versions



Dimensional drawing



FlexBlend, Surface-Mounted

Product details

FlexBlend Surface Mounted
SM340C WH



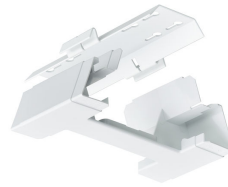
FlexBlend Surface Mounted
SM340C SI



FlexBlend Surface Mounted
SM340C WH



FlexBlend Suspended SP340P WH



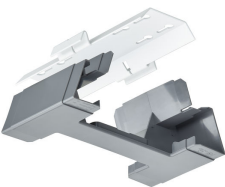
FlexBlend Surface Mounted
SM340C brackets



FlexBlend Surface Mounted
SM340C SI



FlexBlend Suspended SP340P SI



FlexBlend, Surface-Mounted

General Information

Driver included	Yes
Light source replaceable	No
Number of gear units	Unit
Service Tag	Yes

Light Technical

Beam angle of light source	120 degree(s)
Correlated Colour Temperature (Nom)	4000 K
Colour rendering index (CRI)	>90
Optic type	Wide beam

Operating and Electrical

Protection class IEC	Safety class I
Input Voltage	220 to 240 V
Line Frequency	50 to 60 Hz
Suitable for random switching	Yes (relates to presence/movement detection and daylight harvesting)

Controls and Dimming

Dimmable	Yes
Maximum dim level	1%

Mechanical and Housing

Mech. impact protection code	IK02
Ingress protection code	IP20

Approval and Application

Ambient temperature range	+10 to +40 °C
CE mark	Yes
ENEC mark	ENEC plus mark
Flammability mark	For mounting on normally flammable surfaces
Glow-wire test	Temperature 850 °C, duration 30 s
Flickering value (PstLM)	1
Stroboscopic effect	0.4

Initial Performance (IEC Compliant)

Initial chromaticity	(0.38, 0.38) SDCM <3
Luminous flux tolerance	+/-10%

Product Data

Product family code	SM340C
---------------------	--------

Light Technical

Order Code	Full Product Name	Luminous efficacy (rated) (nom.)	Luminous Flux
910925867101	SM340C 35S/940 DEIA PCS L150 SI	140 lm/W	3,500 lm
910925867879	SM340C 52S/940 DEIA PCS L150 WH	137 lm/W	5,200 lm

Operating and Electrical

FlexBlend, Surface-Mounted

Order Code	Full Product Name	Power Consumption
910925867101	SM340C 35S/940 DEIA PCS L150 SI	25 W

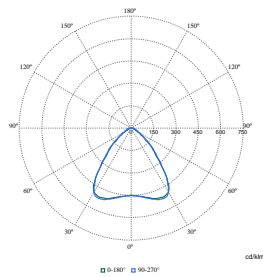
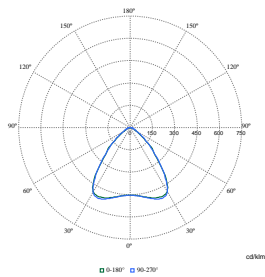
Order Code	Full Product Name	Power Consumption
910925867879	SM340C 52S/940 DEIA PCS L150 WH	38 W

Mechanical and Housing

Order Code	Full Product Name	Housing Colour
910925867101	SM340C 35S/940 DEIA PCS L150 SI	Silver

Order Code	Full Product Name	Housing Colour
910925867879	SM340C 52S/940 DEIA PCS L150 WH	White

Polar Wide Diagrams



Polar Normal (separate) - SM340CI -
910925867101

Polar Normal (separate) - SM340CI -
910925867879

