



# TrueSlim: True sustainable slim LED luminaire for special ceiling

## TrueSlim

Architects need a lighting solution that matches the interior architecture of the space they are enhancing. TrueSlim is an offering that meets the flexibility requirements for ceiling integration, suitable for a InterAlu & Haufe ceiling types. Specifiers & ceiling integrators need luminaires that save energy, at the same time as providing the right level of light to fit into a specific ceiling dimension. Not only is it compliant with the WELL Building Standard for Light, TrueSlim is rated UGR<19, which is compliant with all office norms (OC). These luminaires in the family are available in different lengths and light outputs. This offers the ultimate design flexibility and unlimited possibilities. TrueSlim luminaires are also a sustainable, with efficiency up to 110 lm/W, lifetime of L90 at 50K hrs and the option to upgrade to wireless connectivity and control.

### Benefits

- Office compliant lighting
- Future-ready, scalable smart office capabilities
- Compatible with the Interact connected lighting system
- Supports sustainable building design and energy-saving subsidy criteria

## Features

- Uniform lighting with excellent glare control ( $UGR < 19$ ,  $L65 < 3000 \text{cd/m}^2$ )
- Luminaire is specially designed for use in linear lamella ceilings
- 3000K & 4000K in CRI > 80
- Long lifetime L90@50,000 hours
- Stand-alone driver with default 5m cable. DALI version: 2 luminaires with 1 driver; Interact sensor version: 1 luminaire with 1 driver.
- Luminaire is hanging on the lamella with spring clips for easy installation.
- Integrated sensors/wireless drivers for data collection, occupancy, daylight regulation and wayfinding
- Environmental Product Declaration (EPD)

## Application

- Offices
- Education
- Hospitality

## Warnings and Safety

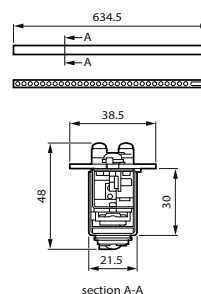
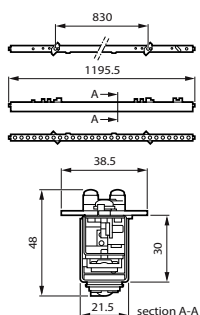
- The product is IP20 and, as such, is not protected against water ingress. Therefore, we strongly recommend that the environment in which the luminaire is to be installed is suitably checked.
- If the above advice is not taken and the luminaires are subject to water ingress, Philips / Signify cannot guarantee safe failure and the product warranty will become void.

## Versions

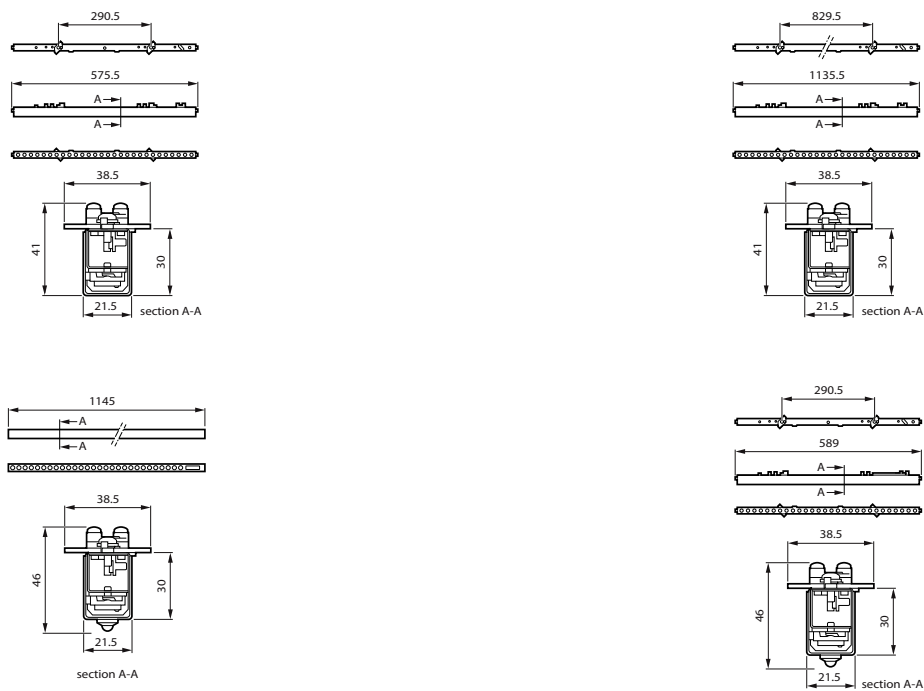


TrueSlim RC710B 2XL60 PSED

## Dimensional drawing



Dimensional drawing



Product details



TrueSlim RC710B 2xL60 COLLAGE



TrueSlim RC710B 1xL60 COLLAGE



TrueSlim RC710B EL COLLAGE

| General Information                 |   |
|-------------------------------------|---|
| Driver included                     | Yes   |
| Number of gear units                | 1 unit                                      |
| Light Technical                     |   |
| Color rendering index (CRI)         | ≥80   |
| Optic type                          | Very wide beam                              |
| Operating and Electrical            |   |
| Protection class IEC                | Safety class II                             |
| Input Voltage                       | 220 to 240 V                                |
| Line Frequency                      | 50 to 60 Hz                                 |
| Controls and Dimming                |   |
| Dimmable                            | Yes   |
| Maximum dim level                   | 1%  |
| Mechanical and Housing              |   |
| Explosion hazard class              | -   |
| Housing Color                       | Black                                       |
| Mech. impact protection code        | IK03  |
| Ingress protection code             | IP20  |
| Approval and Application            |   |
| Ambient temperature range           | 0 to +35 °C                                 |
| CE mark                             | Yes   |
| ENEC mark                           | ENEC mark                                   |
| Flammability mark                   | For mounting on normally flammable surfaces |
| Glow-wire test                      | Temperature 650 °C, duration 30 s           |
| Initial Performance (IEC Compliant) |   |
| Luminous flux tolerance             | +/-10%                                      |
| Product Data                        |   |
| Product family code                 | RC710B                                      |

Light Technical

| Order Code   | Full Product Name                  | Correlated Color  | Luminous Efficacy | Luminous Flux |
|--------------|------------------------------------|-------------------|-------------------|---------------|
|              |                                    | Temperature (Nom) | (rated) (Nom)     |               |
| 910505105755 | RC710B 34S/830 PSED W5 L120 BK     | 3000 K            | 113 lm/W          | 3,400 lm      |
| 910505105758 | RC710B 34S/830 SEIA IA4 W3 L120 BK | 3000 K            | 110 lm/W          | 3,400 lm      |
| 910505105761 | RC710B 34S/840 PSED W5 L120 BK     | 4000 K            | 113 lm/W          | 3,400 lm      |
| 910505105766 | RC710B 34S/840 SEIA IA4 W3 L120 BK | 4000 K            | 110 lm/W          | 3,400 lm      |
| 910505105753 | RC710B 17S/830 PSED W5 L60 BK      | 3000 K            | 113 lm/W          | 1,700 lm      |
| 910505105759 | RC710B 17S/840 PSED W5 L60 BK      | 4000 K            | 113 lm/W          | 1,700 lm      |
| 910505105757 | RC710B 17S/830 SEIA IA4 W3 L60 BK  | 3000 K            | 113 lm/W          | 1,700 lm      |
| 910505105765 | RC710B 17S/840 SEIA IA4 W3 L60 BK  | 4000 K            | 113 lm/W          | 1,700 lm      |
| 910505105756 | RC710B 2X34S/830 PSED W5 L120 BK   | 3000 K            | 111 lm/W          | 3,400 lm      |
| 910505105762 | RC710B 2X34S/840 PSED W5 L120 BK   | 4000 K            | 111 lm/W          | 3,400 lm      |
| 910505105754 | RC710B 2X17S/830 PSED W5 L60 BK    | 3000 K            | 113 lm/W          | 1,700 lm      |
| 910505105760 | RC710B 2X17S/840 PSED W5 L60 BK    | 4000 K            | 113 lm/W          | 1,700 lm      |
| 910505105763 | RC710B 17S/840 PSD ELP3 W5 L60 BK  | 4000 K            | 89 lm/W           | 1,700 lm      |
| 910505105764 | RC710B 34S/840 PSD ELP3 W5 L120 BK | 4000 K            | 100 lm/W          | 3,400 lm      |

Operating and Electrical

| Order Code   | Full Product Name                  | Power       | Suitable for     |
|--------------|------------------------------------|-------------|------------------|
|              |                                    | Consumption | random switching |
| 910505105755 | RC710B 34S/830 PSED W5 L120 BK     | 30 W        | Not applicable   |
| 910505105758 | RC710B 34S/830 SEIA IA4 W3 L120 BK | 30 W        | Yes              |
| 910505105761 | RC710B 34S/840 PSED W5 L120 BK     | 30 W        | Not applicable   |
| 910505105766 | RC710B 34S/840 SEIA IA4 W3 L120 BK | 31 W        | Yes              |

| Order Code   | Full Product Name                 | Power       | Suitable for     |
|--------------|-----------------------------------|-------------|------------------|
|              |                                   | Consumption | random switching |
| 910505105753 | RC710B 17S/830 PSED W5 L60 BK     | 15 W        | Not applicable   |
| 910505105759 | RC710B 17S/840 PSED W5 L60 BK     | 15 W        | Not applicable   |
| 910505105757 | RC710B 17S/830 SEIA IA4 W3 L60 BK | 15 W        | Yes              |
| 910505105765 | RC710B 17S/840 SEIA IA4 W3 L60 BK | 15 W        | Yes              |

| Order Code   | Full Product Name                | Power Consumption | Suitable for random switching |
|--------------|----------------------------------|-------------------|-------------------------------|
| 910505105756 | RC710B 2X34S/830 PSED W5 L120 BK | 61 W              | Not applicable                |
| 910505105762 | RC710B 2X34S/840 PSED W5 L120 BK | 61 W              | Not applicable                |
| 910505105754 | RC710B 2X17S/830 PSED W5 L60 BK  | 30 W              | Not applicable                |

## Controls and Dimming

| Order Code   | Full Product Name                  | Embedded control                          |
|--------------|------------------------------------|---|
| 910505105755 | RC710B 34S/830 PSED W5 L120 BK     | -   |
| 910505105758 | RC710B 34S/830 SEIA IA4 W3 L120 BK | Upgradable sensor slot with SNS210 sensor |
| 910505105761 | RC710B 34S/840 PSED W5 L120 BK     | -   |
| 910505105766 | RC710B 34S/840 SEIA IA4 W3 L120 BK | Upgradable sensor slot with SNS210 sensor |
| 910505105753 | RC710B 17S/830 PSED W5 L60 BK      | -   |
| 910505105759 | RC710B 17S/840 PSED W5 L60 BK      | -   |
| 910505105757 | RC710B 17S/830 SEIA IA4 W3 L60 BK  | Upgradable sensor slot with SNS210 sensor |

## Emergency Operation (1/2)

| Order Code   | Full Product Name                  | Central Emergency | Emergency lighting                     | Emergency flux | Type of emergency lighting battery |
|--------------|------------------------------------|-------------------|--|----------------|------------------------------------|
| 910505105755 | RC710B 34S/830 PSED W5 L120 BK     | Yes               | DC operated central emergency lighting | -              | -                                  |
| 910505105758 | RC710B 34S/830 SEIA IA4 W3 L120 BK | Yes               | DC operated central emergency lighting | -              | -                                  |
| 910505105761 | RC710B 34S/840 PSED W5 L120 BK     | Yes               | DC operated central emergency lighting | -              | -                                  |
| 910505105766 | RC710B 34S/840 SEIA IA4 W3 L120 BK | Yes               | DC operated central emergency lighting | -              | -                                  |
| 910505105753 | RC710B 17S/830 PSED W5 L60 BK      | Yes               | DC operated central emergency lighting | -              | -                                  |
| 910505105759 | RC710B 17S/840 PSED W5 L60 BK      | Yes               | DC operated central emergency lighting | -              | -                                  |

| Order Code   | Full Product Name                  | Power Consumption | Suitable for random switching |
|--------------|------------------------------------|-------------------|-------------------------------|
| 910505105760 | RC710B 2X17S/840 PSED W5 L60 BK    | 30 W              | Not applicable                |
| 910505105763 | RC710B 17S/840 PSD ELP3 W5 L60 BK  | 19 W              | Not applicable                |
| 910505105764 | RC710B 34S/840 PSD ELP3 W5 L120 BK | 30 W              | Not applicable                |

| Order Code   | Full Product Name                  | Embedded control                          |
|--------------|------------------------------------|---|
| 910505105765 | RC710B 17S/840 SEIA IA4 W3 L60 BK  | Upgradable sensor slot with SNS210 sensor |
| 910505105756 | RC710B 2X34S/830 PSED W5 L120 BK   | -   |
| 910505105762 | RC710B 2X34S/840 PSED W5 L120 BK   | -   |
| 910505105754 | RC710B 2X17S/830 PSED W5 L60 BK    | -   |
| 910505105760 | RC710B 2X17S/840 PSED W5 L60 BK    | -   |
| 910505105763 | RC710B 17S/840 PSD ELP3 W5 L60 BK  | -   |
| 910505105764 | RC710B 34S/840 PSD ELP3 W5 L120 BK | -   |

| Order Code   | Full Product Name                 | Central Emergency | Emergency lighting                     | Emergency flux | Type of emergency lighting battery |
|--------------|-----------------------------------|-------------------|--|----------------|------------------------------------|
| 910505105757 | RC710B 17S/830 SEIA IA4 W3 L60 BK | Yes               | DC operated central emergency lighting | -              | -                                  |
| 910505105765 | RC710B 17S/840 SEIA IA4 W3 L60 BK | Yes               | DC operated central emergency lighting | -              | -                                  |
| 910505105756 | RC710B 2X34S/830 PSED W5 L120 BK  | Yes               | DC operated central emergency lighting | -              | -                                  |
| 910505105762 | RC710B 2X34S/840 PSED W5 L120 BK  | Yes               | DC operated central emergency lighting | -              | -                                  |
| 910505105754 | RC710B 2X17S/830 PSED W5 L60 BK   | Yes               | DC operated central emergency lighting | -              | -                                  |

|              |                   |                   |                    |                | Type of emergency lighting |
|--------------|-------------------|-------------------|--------------------|----------------|----------------------------|
| Order Code   | Full Product Name | Central Emergency | Emergency lighting | Emergency flux | emergency battery          |
| 910505105760 | RC710B            | Yes               | DC operated        | -              | -                          |
|              | 2X17S/840         |                   | central            |                |                            |
|              | PSED W5           |                   | emergency          |                |                            |
|              | L60 BK            |                   | lighting           |                |                            |
| 910505105763 | RC710B            | No                | Emergency          | 300 lm         | Lithium                    |
|              | 17S/840 PSD       |                   | lighting 3 hours   |                |                            |

|              |                   |                   |                      |                | Type of emergency lighting |
|--------------|-------------------|-------------------|----------------------|----------------|----------------------------|
| Order Code   | Full Product Name | Central Emergency | Emergency lighting   | Emergency flux | emergency battery          |
|              | ELP3 W5 L60 BK    |                   | duration Pro version |                |                            |
|              |                   |                   |                      |                |                            |
| 910505105764 | RC710B            | No                | Emergency            | 300 lm         | Lithium                    |
|              | 34S/840 PSD       |                   | lighting 3 hours     |                |                            |
|              | ELP3 W5           |                   | duration Pro         |                |                            |
|              | L120 BK           |                   | version              |                |                            |

Emergency Operation (2/2)

|              |                                    |  |  |  | Rated duration of the emergency lighting (when fully charged) |
|--------------|------------------------------------|--|--|--|---|
| Order Code   | Full Product Name                  |  | Power consumption during Central DC emergency mode |  |   |
| 910505105755 | RC710B 34S/830 PSED W5 L120 BK     |  | -  |  | -   |
| 910505105758 | RC710B 34S/830 SEIA IA4 W3 L120 BK |  | -  |  | -   |
| 910505105761 | RC710B 34S/840 PSED W5 L120 BK     |  | -  |  | -   |
| 910505105766 | RC710B 34S/840 SEIA IA4 W3 L120 BK |  | -  |  | -   |
| 910505105753 | RC710B 17S/830 PSED W5 L60 BK      |  | -  |  | -   |
| 910505105759 | RC710B 17S/840 PSED W5 L60 BK      |  | -  |  | -   |
| 910505105757 | RC710B 17S/830 SEIA IA4 W3 L60 BK  |  | -  |  | -   |

|              |                                    |  |  |  | Rated duration of the emergency lighting (when fully charged) |
|--------------|------------------------------------|--|--|--|---|
| Order Code   | Full Product Name                  |  | Power consumption during Central DC emergency mode |  |   |
| 910505105765 | RC710B 17S/840 SEIA IA4 W3 L60 BK  |  | -  |  | -   |
| 910505105756 | RC710B 2X34S/830 PSED W5 L120 BK   |  | -  |  | -   |
| 910505105762 | RC710B 2X34S/840 PSED W5 L120 BK   |  | -  |  | -   |
| 910505105754 | RC710B 2X17S/830 PSED W5 L60 BK    |  | -  |  | -   |
| 910505105760 | RC710B 2X17S/840 PSED W5 L60 BK    |  | -  |  | -   |
| 910505105763 | RC710B 17S/840 PSD ELP3 W5 L60 BK  |  | 4 W  |  | 3 hour(s)   |
| 910505105764 | RC710B 34S/840 PSD ELP3 W5 L120 BK |  | 4 W  |  | 3 hour(s)   |

Initial Performance (IEC Compliant)

| Order Code   | Full Product Name                  | Initial chromaticity |
|--------------|------------------------------------|----------------------|
| 910505105755 | RC710B 34S/830 PSED W5 L120 BK     | (0.43, 0.40) SDCM <3 |
| 910505105758 | RC710B 34S/830 SEIA IA4 W3 L120 BK | (0.43, 0.40) SDCM <3 |
| 910505105761 | RC710B 34S/840 PSED W5 L120 BK     | (0.38, 0.38) SDCM <3 |
| 910505105766 | RC710B 34S/840 SEIA IA4 W3 L120 BK | (0.38, 0.38) SDCM <3 |
| 910505105753 | RC710B 17S/830 PSED W5 L60 BK      | (0.43, 0.40) SDCM <3 |
| 910505105759 | RC710B 17S/840 PSED W5 L60 BK      | (0.38, 0.38) SDCM <3 |
| 910505105757 | RC710B 17S/830 SEIA IA4 W3 L60 BK  | (0.43, 0.40) SDCM <3 |

| Order Code   | Full Product Name                  | Initial chromaticity |
|--------------|------------------------------------|----------------------|
| 910505105765 | RC710B 17S/840 SEIA IA4 W3 L60 BK  | (0.38, 0.38) SDCM <3 |
| 910505105756 | RC710B 2X34S/830 PSED W5 L120 BK   | (0.43, 0.40) SDCM <3 |
| 910505105762 | RC710B 2X34S/840 PSED W5 L120 BK   | (0.38, 0.38) SDCM <3 |
| 910505105754 | RC710B 2X17S/830 PSED W5 L60 BK    | (0.43, 0.40) SDCM <3 |
| 910505105760 | RC710B 2X17S/840 PSED W5 L60 BK    | (0.38, 0.38) SDCM <3 |
| 910505105763 | RC710B 17S/840 PSD ELP3 W5 L60 BK  | (0.38, 0.38) SDCM <3 |
| 910505105764 | RC710B 34S/840 PSD ELP3 W5 L120 BK | (0.38, 0.38) SDCM <3 |

