

Philips TrueLine recessed: True line of light

TrueLine, recessed

Architects need a lighting solution that matches the interior architecture of the space they are enhancing. They want a light line with elegant proportions and high light levels that offers maximum design freedom. Philips TrueLine is a flexible linear luminaire for indoor office applications that offers excellent quality with the promise of future-proof upgrades. Specifiers need luminaires that save energy, at the same time as providing the right level of light. TrueLine recessed meets both these sets of requirements. Not only is it compliant with the WELL Building Standard for Light, TrueLine recessed is rated UGR<19, which is compliant with all office norms (OC). TrueLine also comes in suspended and surface-mounted versions. All the luminaires in the family are available in different lengths, shapes, colors and light outputs. This offers the ultimate design flexibility and unlimited possibilities. TrueLine luminaires are also a sustainable, future-proof choice with high efficiency up to 174 lm/W and the option to upgrade to wireless connectivity and control.

Benefits

- Extremely high efficacy for a line luminaire
- Office compliant lighting
- Future-ready, scalable smart office capabilities
- Compatible with the Interact connected lighting system
- Supports sustainable building design and energy-saving subsidy criteria

Features

- Highly-uniform lighting with excellent glare control ($UGR < 19$, $L65 < 3000 \text{ cd/m}^2$)
- Best-in-class efficacy up to 174 lm/W with our Ultra efficient offering
- 3000K, 4000K, and Tunable White versions, all CRI > 90; Bio-up & Ultra efficient with CRI > 80
- Long lifetime L90@50,000 hours
- Integrated sensors/wireless drivers for data collection, occupancy, daylight regulation and wayfinding
- Environmental Product Declaration (EPD)
- Recessed, suspended and surface mounted options

Application

- Offices
- Education
- Retail

Warnings and Safety

- The product is IPX0 and, as such, is not protected against water ingress. Therefore, we strongly recommend that the environment in which the luminaire is to be installed is suitably checked.
- If the above advice is not taken and the luminaires are subject to water ingress, Philips / Signify cannot guarantee safe failure and the product warranty will become void.

Versions

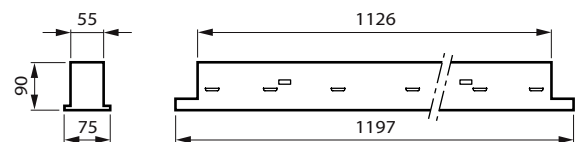
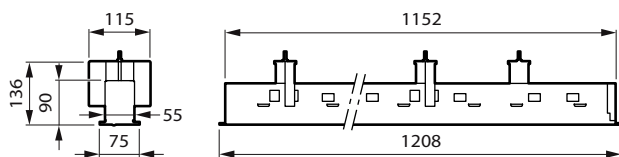


TrueLineRecessed PCV
ASYMMETRIC RTP



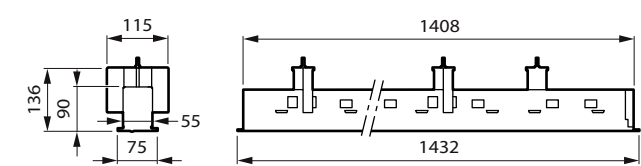
TrueLineRecessed PCV LINE
NOSENSOR RTP

Dimensional drawing



Recessed VPC_W8L120_no sensor

Dimensional drawing



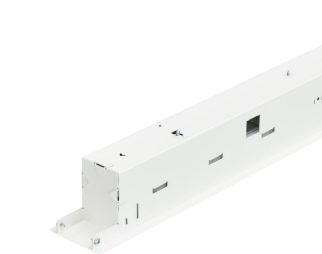
Product details



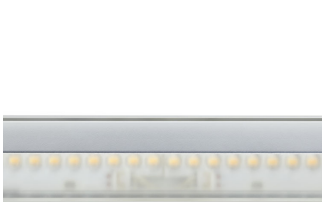
TrueLineRecessed NOC OPTICS
DP



TrueLine-
RC530_RC531_RC534B_VPC-
DPP.tif



TrueLine-
RC530_RC531_RC534B_VPC_PI5-
DPP.tif



TrueLine-
RC534B_SM534C_SP534P-DPP.tif



TrueLineRecessed OC OPTICS DP



TrueLineRecessed PCV line
CONNECTED DP1



TrueLineRecessed PCV line
CONNECTED DP2

Product details

TrueLine_Recessed IP DP



TrueLineRecessed ASYMMETRIC OPTICS DP



General Information

Driver included	Yes
Light source replaceable	No
Number of gear units	1 unit
Service tag	Yes

Light Technical

Beam angle of light source	- degree(s)
Correlated Color Temperature (Nom)	4000 K
Color rendering index (CRI)	>90

Operating and Electrical

Protection class IEC	Safety class I
Input Voltage	220 to 240 V
Line Frequency	50 to 60 Hz
Suitable for random switching	No

Controls and Dimming

Maximum dim level	1%
-------------------	----

Mechanical and Housing

Housing Color	White
Mech. impact protection code	IK03
Ingress protection code	IP20

Emergency Operation

Central Emergency	Yes
Emergency lighting	DC operated central emergency lighting

Approval and Application

Ambient temperature range	+10 to +40 °C
CE mark	Yes
ENEC mark	ENEC mark
Flammability mark	For mounting on normally flammable surfaces
Glow-wire test	Temperature 650 °C, duration 30 s
Flickering value (PstLM) - Flickering value as per EN 61000-3-3	1
Stroboscopic effect visibility measure (SVM)	0.4

Initial Performance (IEC Compliant)

Initial chromaticity	(0.38, 0.38) SDCM <3
Luminous flux tolerance	+/-10%

Light Technical

Order Code	Full Product Name	Luminous Efficacy		
		(rated) (Nom)	Luminous Flux	Optic type
910505103104	RC530B 15S/940 DEIA W8L113 PCV	127 lm/W	1,500 lm	Wide beam
910505103117	RC531B 15S/940 DEIA W8L113 PCV	99 lm/W	1,500 lm	Wide beam
910505103121	RC531B 31S/940 DEIA W8L141 PCV	110 lm/W	3,100 lm	Wide beam
910505103128	RC534B 43S/940 DEIA W8L141 PCV	138 lm/W	4,300 lm	Asymmetrical mirror
910505103119	RC532B 25S/940 DEIA W8L113 PCV	139 lm/W	2,500 lm	Wide beam

Operating and Electrical

Order Code	Full Product Name	Power Consumption
910505103104	RC530B 15S/940 DEIA W8L113 PCV	12.2 W
910505103117	RC531B 15S/940 DEIA W8L113 PCV	14.6 W
910505103121	RC531B 31S/940 DEIA W8L141 PCV	29 W

Order Code	Full Product Name	Power Consumption
910505103128	RC534B 43S/940 DEIA W8L141 PCV	32 W
910505103119	RC532B 25S/940 DEIA W8L113 PCV	18 W

Controls and Dimming

Order Code	Full Product Name	Dimmable
910505103104	RC530B 15S/940 DEIA W8L113 PCV	-
910505103117	RC531B 15S/940 DEIA W8L113 PCV	Yes
910505103121	RC531B 31S/940 DEIA W8L141 PCV	Yes

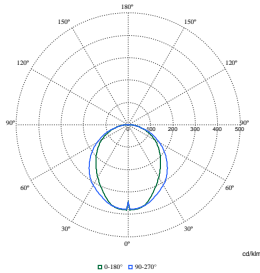
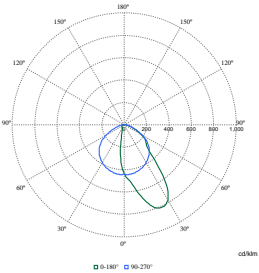
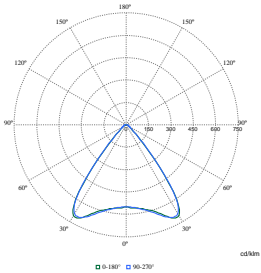
Order Code	Full Product Name	Dimmable
910505103128	RC534B 43S/940 DEIA W8L141 PCV	Yes
910505103119	RC532B 25S/940 DEIA W8L113 PCV	Yes

Product Data

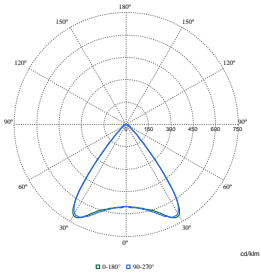
Order Code	Full Product Name	Product family code
910505103104	RC530B 15S/940 DEIA W8L113 PCV	RC530B
910505103117	RC531B 15S/940 DEIA W8L113 PCV	RC531B
910505103121	RC531B 31S/940 DEIA W8L141 PCV	RC531B

Order Code	Full Product Name	Product family code
910505103128	RC534B 43S/940 DEIA W8L141 PCV	RC534B
910505103119	RC532B 25S/940 DEIA W8L113 PCV	RC532B

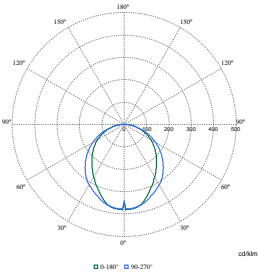
Polar Wide Diagrams



Polar Normal (separate) - RC530BI - 910505103119



Polar Normal (separate) - RC530BI - 910505103128



Polar Normal (separate) - RC530BI - 910505103117

Polar Normal (separate) - RC530BI - 910505103104

Polar Normal (separate) - RC530BI - 910505103121

TrueLine, recessed

