



TrueLine, recessed - True line of light: elegant, energy- efficient and compliant with office lighting norms

TrueLine, recessed

Architects need a lighting solution that matches the interior architecture of the property they are working on. They want a light line with an elegant design and very high light levels. Specifiers need luminaires that enable them to save energy while at the same time providing the right level of light, in compliance with office lighting norms. TrueLine, recessed is able to meet both sets of requirements. TrueLine is also available in a suspended version.

Benefits

- The most uniform exit window
- Extremely high efficacy for a line luminaire
- Luminaire housing dimensions that are most popular with architects

TrueLine, recessed

Features

- Luminous efficacy > 100 lm/W
- Complies with office lighting norms
- Stand-alone and continuous lines
- Suspended version also available
- Direct and indirect light
- Homogeneous exit window
- Future-proof: PoE

Application

- General lighting for mid- and high-end office buildings

Warnings and Safety

- The product is IPX0 and, as such, is not protected against water ingress. Therefore, we strongly recommend that the environment in which the luminaire is to be installed is suitably checked.
- If the above advice is not taken and the luminaires are subject to water ingress, Philips / Signify cannot guarantee safe failure and the product warranty will become void.

Versions

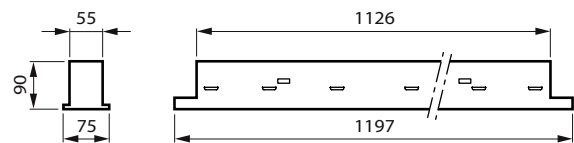
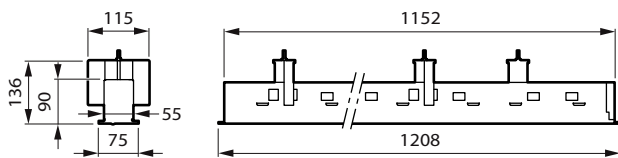


TrueLineRecessed PCV
ASYMMETRIC RTP



TrueLineRecessed PCV LINE
NOSENSOR RTP

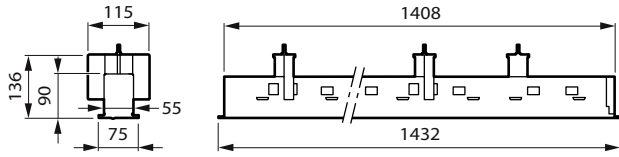
Dimensional drawing



Recessed VPC_W8L120_no sensor

TrueLine, recessed

Dimensional drawing



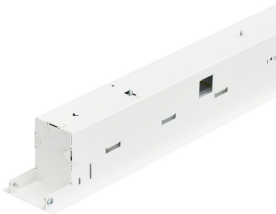
Product details



TrueLineRecessed NOC OPTICS
DP



TrueLine-
RC530_RC531_RC534B_VPC-
DPP.tif



TrueLine-
RC530_RC531_RC534B_VPC_PI5-
DPP.tif



TrueLine-
RC534B_SM534C_SP534P-DPP.tif



TrueLineRecessed OC OPTICS DP



TrueLineRecessed PCV line
CONNECTED DP1



TrueLineRecessed PCV line
CONNECTED DP2

TrueLine, recessed

Product details

TrueLine_Recessed IP DP



TrueLineRecessed ASYMMETRIC OPTICS DP



TrueLine, recessed

General Information

| | |
|--------------------------|--------|
| Driver included | Yes |
| Light source replaceable | No |
| Number of gear units | 1 unit |
| Service tag | Yes |

Light Technical

| | |
|------------------------------------|-------------|
| Beam angle of light source | - degree(s) |
| Correlated Color Temperature (Nom) | 4000 K |
| Color rendering index (CRI) | >90 |

Operating and Electrical

| | |
|-------------------------------|----------------|
| Protection class IEC | Safety class I |
| Input Voltage | 220 to 240 V |
| Line Frequency | 50 to 60 Hz |
| Suitable for random switching | No |

Controls and Dimming

| | |
|-------------------|----|
| Maximum dim level | 1% |
|-------------------|----|

Mechanical and Housing

| | |
|------------------------------|-------|
| Housing Color | White |
| Mech. impact protection code | IK03 |
| Ingress protection code | IP20 |

Emergency Operation

| | |
|--------------------|---|
| Central Emergency | Yes |
| Emergency lighting | DC operated central emergency lighting |

Approval and Application

| | |
|---|--|
| Ambient temperature range | +10 to +40 °C |
| CE mark | Yes |
| ENEC mark | ENEC mark |
| Flammability mark | For mounting on normally flammable surfaces |
| Glow-wire test | Temperature 650 °C, duration 30 s |
| Flickering value (PstLM) - Flickering value as per EN 61000-3-3 | 1 |
| Stroboscopic effect visibility measure (SVM) | 0.4 |

Initial Performance (IEC Compliant)

| | |
|-------------------------|-------------------------|
| Initial chromaticity | (0.38, 0.38) SDCM <3 |
| Luminous flux tolerance | +/-10% |

Light Technical

| Order Code | Full Product Name | Luminous Efficacy (rated) (Nom) | Luminous Flux | Optic type |
|------------|-----------------------------------|---------------------------------|---------------|---------------------|
| 97146200 | RC530B 15S/940 DEIA W8L113 PCV | 127 lm/W | 1,500 lm | Wide beam |
| 97171400 | RC531B 15S/940 DEIA W8L113 PCV | 99 lm/W | 1,500 lm | Wide beam |
| 97178300 | RC531B 31S/940 DEIA W8L141 PCV | 110 lm/W | 3,100 lm | Wide beam |
| 97200100 | RC534B 43S/940 DEIA W8L141 PCV | 138 lm/W | 4,300 lm | Asymmetrical mirror |
| 97184400 | RC532B 25S/940 DEIA W8L113 PCV | 139 lm/W | 2,500 lm | Wide beam |

Operating and Electrical

TrueLine, recessed

| Order Code | Full Product Name | Power Consumption |
|------------|--------------------------------|-------------------|
| 97146200 | RC530B 15S/940 DEIA W8L113 PCV | 12.2 W |
| 97171400 | RC531B 15S/940 DEIA W8L113 PCV | 14.6 W |
| 97178300 | RC531B 31S/940 DEIA W8L141 PCV | 29 W |

| Order Code | Full Product Name | Power Consumption |
|------------|--------------------------------|-------------------|
| 97200100 | RC534B 43S/940 DEIA W8L141 PCV | 32 W |
| 97184400 | RC532B 25S/940 DEIA W8L113 PCV | 18 W |

Controls and Dimming

| Order Code | Full Product Name | Dimmable |
|------------|--------------------------------|----------|
| 97146200 | RC530B 15S/940 DEIA W8L113 PCV | - |
| 97171400 | RC531B 15S/940 DEIA W8L113 PCV | Yes |
| 97178300 | RC531B 31S/940 DEIA W8L141 PCV | Yes |

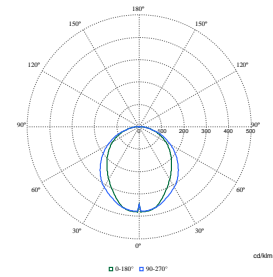
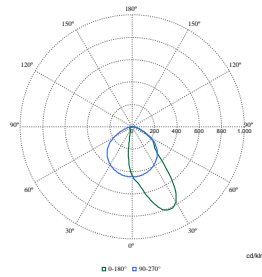
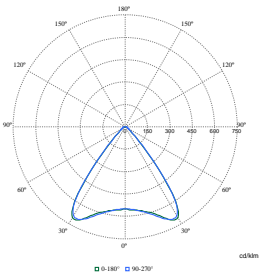
| Order Code | Full Product Name | Dimmable |
|------------|--------------------------------|----------|
| 97200100 | RC534B 43S/940 DEIA W8L141 PCV | Yes |
| 97184400 | RC532B 25S/940 DEIA W8L113 PCV | Yes |

Product Data

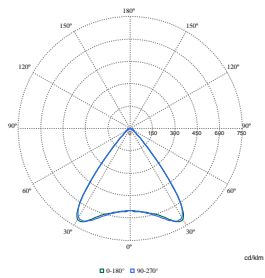
| Order Code | Full Product Name | Product family code |
|------------|--------------------------------|---------------------|
| 97146200 | RC530B 15S/940 DEIA W8L113 PCV | RC530B |
| 97171400 | RC531B 15S/940 DEIA W8L113 PCV | RC531B |
| 97178300 | RC531B 31S/940 DEIA W8L141 PCV | RC531B |

| Order Code | Full Product Name | Product family code |
|------------|--------------------------------|---------------------|
| 97200100 | RC534B 43S/940 DEIA W8L141 PCV | RC534B |
| 97184400 | RC532B 25S/940 DEIA W8L113 PCV | RC532B |

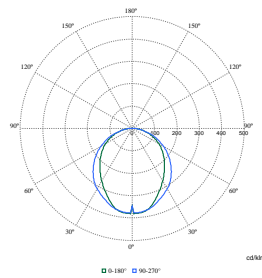
Polar Wide Diagrams



Polar Normal (separate) - RC530BI - 910505103119



Polar Normal (separate) - RC530BI - 910505103128



Polar Normal (separate) - RC530BI - 910505103117

Polar Normal (separate) - RC530BI - 910505103104

Polar Normal (separate) - RC530BI - 910505103121

TrueLine, recessed



© 2026 Signify Holding All rights reserved. Signify does not give any representation or warranty as to the accuracy or completeness of the information included herein and shall not be liable for any action in reliance thereon. The information presented in this document is not intended as any commercial offer and does not form part of any quotation or contract, unless otherwise agreed by Signify. All trademarks are owned by Signify Holding or their respective owners.

www.lighting.philips.com

2026, March 19 - data subject to change