

# TrueLine, recessed - True line of light: elegant, energy- efficient and compliant with office lighting norms

## TrueLine, recessed

Architects need a lighting solution that matches the interior architecture of the property they are working on. They want a light line with an elegant design and very high light levels. Specifiers need luminaires that enable them to save energy while at the same time providing the right level of light, in compliance with office lighting norms. TrueLine, recessed is able to meet both sets of requirements. TrueLine is also available in a suspended version.

### Benefits

- The most uniform exit window
- Extremely high efficacy for a line luminaire
- Luminaire housing dimensions that are most popular with architects

### Features

- Luminous efficacy > 100 lm/W
- Complies with office lighting norms
- Stand-alone and continuous lines
- Suspended version also available
- Direct and indirect light
- Homogeneous exit window
- Future-proof: PoE

### Application

- General lighting for mid- and high-end office buildings

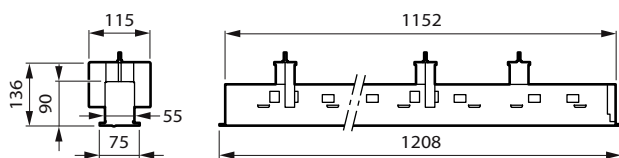
### Warnings and Safety

- The product is IPX0 and, as such, is not protected against water ingress. Therefore, we strongly recommend that the environment in which the luminaire is to be installed is suitably checked.
- If the above advice is not taken and the luminaires are subject to water ingress, Philips / Signify cannot guarantee safe failure and the product warranty will become void.

### Versions



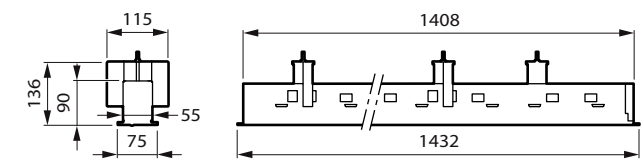
### Dimensional drawing



Recessed VPC\_W8L120\_no sensor

TrueLine, recessed

Dimensional drawing



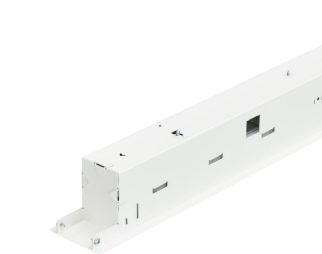
Product details



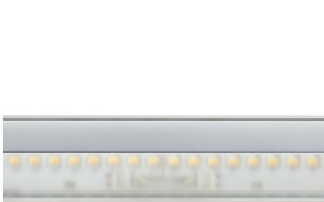
TrueLineRecessed NOC OPTICS  
DP



TrueLine-  
RC530\_RC531\_RC534B\_VPC-  
DPP.tif



TrueLine-  
RC530\_RC531\_RC534B\_VPC\_PI5-  
DPP.tif



TrueLine-  
RC534B\_SM534C\_SP534P-DPP.tif



TrueLineRecessed OC OPTICS DP



TrueLineRecessed PCV line  
CONNECTED DP1



TrueLineRecessed PCV line  
CONNECTED DP2

Product details

TrueLine\_Recessed IP DP



TrueLineRecessed ASYMMETRIC OPTICS DP



General Information	
Driver included	Yes
Light source replaceable	No
Number of gear units	1 unit
Service tag	Yes
Light Technical	
Beam angle of light source	- degree(s)
Correlated Color Temperature (Nom)	4000 K
Color rendering index (CRI)	>90
Operating and Electrical	
Protection class IEC	Safety class I
Input Voltage	220 to 240 V
Line Frequency	50 to 60 Hz
Suitable for random switching	No
Controls and Dimming	
Maximum dim level	1%
Mechanical and Housing	
Housing Color	White
Mech. impact protection code	IK03
Ingress protection code	IP20
Emergency Operation	
Central Emergency	Yes
Emergency lighting	DC operated central emergency lighting
Approval and Application	
Ambient temperature range	+10 to +40 °C
CE mark	Yes
ENEC mark	ENEC mark
Flammability mark	For mounting on normally flammable surfaces
Glow-wire test	Temperature 650 °C, duration 30 s
Flickering value (PstLM) - Flickering value as per EN 61000-3-3	1
Stroboscopic effect visibility measure (SVM)	0.4
Initial Performance (IEC Compliant)	
Initial chromaticity	(0.38, 0.38) SDCM <3
Luminous flux tolerance	+/-10%

Light Technical

Order Code	Full Product Name	Luminous Efficacy	Luminous Flux	Optic type
		(rated) (Nom)		
97146200	RC530B 15S/940 DEIA W8L113 PCV	127 lm/W	1,500 lm	Wide beam
97171400	RC531B 15S/940 DEIA W8L113 PCV	99 lm/W	1,500 lm	Wide beam
97178300	RC531B 31S/940 DEIA W8L141 PCV	110 lm/W	3,100 lm	Wide beam
97200100	RC534B 43S/940 DEIA W8L141 PCV	138 lm/W	4,300 lm	Asymmetrical mirror
97184400	RC532B 25S/940 DEIA W8L113 PCV	139 lm/W	2,500 lm	Wide beam

Operating and Electrical

Order Code	Full Product Name	Power Consumption
97146200	RC530B 15S/940 DEIA W8L113 PCV	12.2 W
97171400	RC531B 15S/940 DEIA W8L113 PCV	14.6 W
97178300	RC531B 31S/940 DEIA W8L141 PCV	29 W

Order Code	Full Product Name	Power Consumption
97200100	RC534B 43S/940 DEIA W8L141 PCV	32 W
97184400	RC532B 25S/940 DEIA W8L113 PCV	18 W

Controls and Dimming

Order Code	Full Product Name	Dimmable
97146200	RC530B 15S/940 DEIA W8L113 PCV	-
97171400	RC531B 15S/940 DEIA W8L113 PCV	Yes
97178300	RC531B 31S/940 DEIA W8L141 PCV	Yes

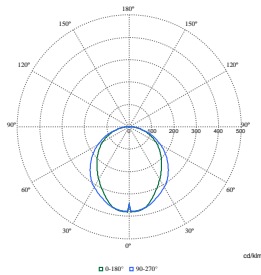
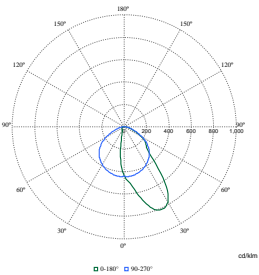
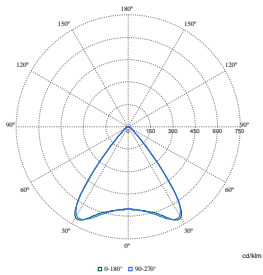
Order Code	Full Product Name	Dimmable
97200100	RC534B 43S/940 DEIA W8L141 PCV	Yes
97184400	RC532B 25S/940 DEIA W8L113 PCV	Yes

Product Data

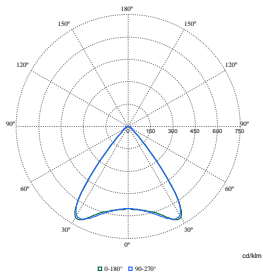
Order Code	Full Product Name	Product family code
97146200	RC530B 15S/940 DEIA W8L113 PCV	RC530B
97171400	RC531B 15S/940 DEIA W8L113 PCV	RC531B
97178300	RC531B 31S/940 DEIA W8L141 PCV	RC531B

Order Code	Full Product Name	Product family code
97200100	RC534B 43S/940 DEIA W8L141 PCV	RC534B
97184400	RC532B 25S/940 DEIA W8L113 PCV	RC532B

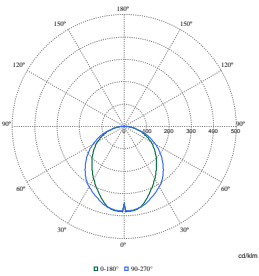
Polar Wide Diagrams



Polar Normal (separate) - RC530BI - 910505103119



Polar Normal (separate) - RC530BI - 910505103128



Polar Normal (separate) - RC530BI - 910505103117

Polar Normal (separate) - RC530BI - 910505103104

Polar Normal (separate) - RC530BI - 910505103121

