



# SlimBlend gen2: high performance, advanced control

## SlimBlend Gen2

Offices are looking for high-performance lighting that enhances performance, comfort, well-being, and sustainability. That's why 'surface of light' solutions that deliver excellent quality of light with great functionality and connectivity are in such demand. Like Philips SlimBlend Gen2 – a complete family of slim luminaires designed for enhanced well-being and circularity. SlimBlend Gen2 luminaires offer state-of-the-art efficacy and excellent light quality (CRI>90) with upgradability features and reparability that promise a long lifetime. They are also designed for recyclability, making them a truly circular, green choice. But it's the high-quality light that makes SlimBlend Gen2 luminaires really stand out. The special Micro Hexagonal Optics (MXO) provides glare-free comfort & also infuses the homogeneous light with sparkles, creating a lively surface of light that enhances interiors and offers full Office compliance. SlimBlend Gen 2 is a minimalist solution with superior lighting specifications combined with a best-in-class connectivity using Interact Pro – all with a sustainable approach to high-performance office lighting.

### Benefits

- Highly efficient LED luminaire with choice of mounting options (recessed, suspended, surface mounted)
- Comfortable, glare-free Office-compliant
- Competitive solution with good lighting specifications
- Sustainable and best-in-class connected offer

# SlimBlend Gen2

## Features

- Best-in-class efficacy up to 140lm/W supports green building design and energy saving subsidy criteria
- CRI90 with Tunable White option
- Office-compliant lighting using both MXO optics and Opal cover
- Long lifetime up to 50,000 hours @L90
- Quick connector or Wieland connector for simpler, faster installation
- Prepared for circularity (no glue, replaceable electronics, upgradable system, efficient and long lifetime) plus supporting Environmental Product Declaration (EPD) guide
- Connected system ready with Interact Pro scalable platform using integrated sensors and/or wireless drivers for data collection, occupancy, daylight regulation and wayfinding

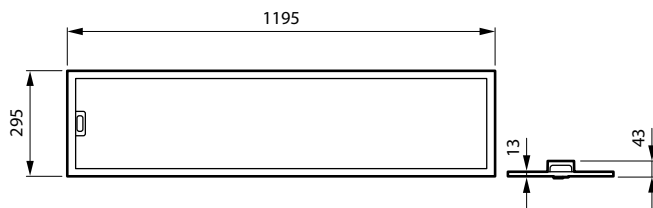
## Application

- Offices
- Healthcare
- Education

## Versions



## Dimensional drawing



# SlimBlend Gen2

## Product details



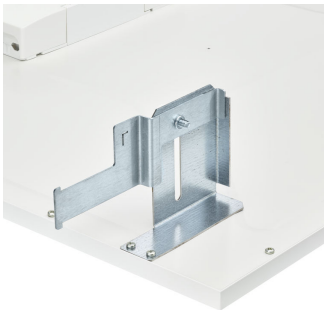
SlimBlendGen2 Backview \_DPP



SlimBlendGen2\_IA5 Sensor with MXO



SlimBlendGen2\_IA5 Sensor\_with OC



SlimBlendGen2 with CPC accessory DPP01



SlimBlendGen2\_Suspended with sensor\_W30L120



Connector- Wieland DPP01



SlimBlendGen2\_Suspended with sensor\_W60L60



RC330V W60L60 sensor with Surface mounted accessories



RC330V W30L120 with Surface mounted accessories



RC330V W30L120 sensor with Surface mounted accessories

# SlimBlend Gen2

## Product details



RC330V W60L60 with Surface mounted accessories



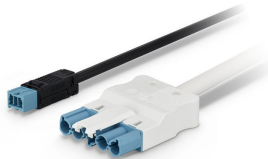
SlimBlendGen2 with CPC accessory DPP02



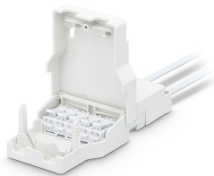
PIP connector DPP02



SlimBlend Gen2  
RC330Z\_SMB\_W30L120



Connector- Wieland DPP02



PIP connector DPP03



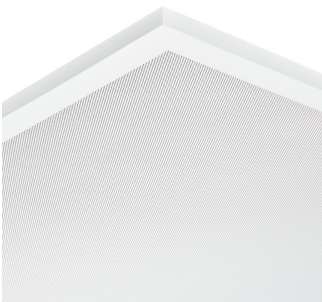
Safety cable



SlimBlendGen2\_IA4 Sensor with  
MXO

# SlimBlend Gen2

## Product details



SlimBlendGen2 MXO-optics



SlimBlend Gen2  
RC330Z\_SMB\_W60L60



SlimBlendGen2 Backview with IA4  
sensor



SlimBlendGen2\_Suspended  
without sensor\_W60L60



SlimBlend Gen2\_Backview with EL  
& Sensor\_DPP



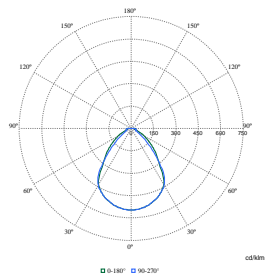
SlimBlendGen2\_Suspended  
without sensor\_W30L120



PIP connector DPP01

## SlimBlend Gen2

### Polar Wide Diagrams



Polar Normal (separate) - RC330VI -  
910505102475

