



SlimBlend gen2: high performance, advanced control

SlimBlend Gen2

Offices are looking for high-performance lighting that enhances performance, comfort, well-being, and sustainability. That's why 'surface of light' solutions that deliver excellent quality of light with great functionality and connectivity are in such demand. Like Philips SlimBlend Gen2 – a complete family of slim luminaires designed for enhanced well-being and circularity. SlimBlend Gen2 luminaires offer state-of-the-art efficacy and excellent light quality (CRI>90) with upgradability features and reparability that promise a long lifetime. They are also designed for recyclability, making them a truly circular, green choice. But it's the high-quality light that makes SlimBlend Gen2 luminaires really stand out. The special Micro Hexagonal Optics (MXO) provides glare-free comfort & also infuses the homogeneous light with sparkles, creating a lively surface of light that enhances interiors and offers full Office compliance. SlimBlend Gen 2 is a minimalist solution with superior lighting specifications combined with a best-in-class connectivity using Interact Pro - all with a sustainable approach to high-performance office lighting.

Benefits

- Highly efficient LED luminaire with choice of mounting options (recessed, suspended, surface mounted)
- Comfortable, glare-free Office-compliant
- Competitive solution with good lighting specifications
- Sustainable and best-in-class connected offer

SlimBlend Gen2

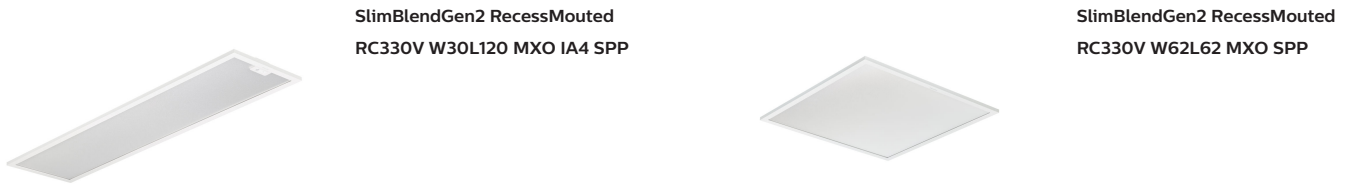
Features

- Best-in-class efficacy up to 140lm/W supports green building design and energy saving subsidy criteria
- CRI90 with Tunable White option
- Office-compliant lighting using both MXO optics and Opal cover
- Long lifetime up to 50,000 hours @L90
- Quick connector or Wieland connector for simpler, faster installation
- Prepared for circularity (no glue, replaceable electronics, upgradable system, efficient and long lifetime) plus supporting Environmental Product Declaration (EPD) guide
- Connected system ready with Interact Pro scalable platform using integrated sensors and/or wireless drivers for data collection, occupancy, daylight regulation and wayfinding

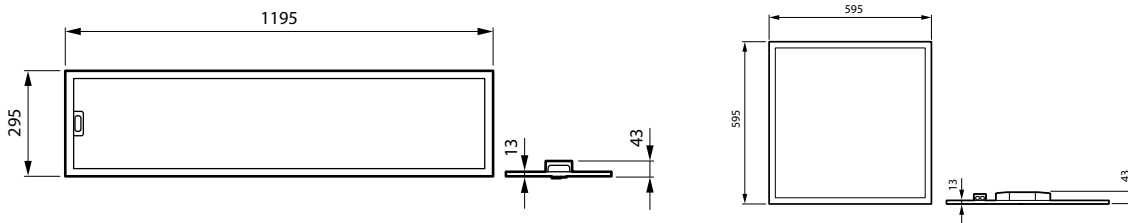
Application

- Offices
- Healthcare
- Education

Versions



Dimensional drawing



SlimBlend Gen2

Product details

SlimBlendGen2 Backview _DPP



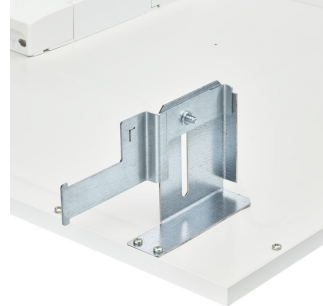
SlimBlendGen2_IA5 Sensor with MXO



SlimBlendGen2_IA5 Sensor_with OC



SlimBlendGen2 with CPC accessory DPP01



SlimBlendGen2_Suspended with sensor_W30L120



Connector- Wieland DPP01



SlimBlendGen2_Suspended with sensor_W60L60



RC330V W60L60 sensor with Surface mounted accessories



RC330V W30L120 with Surface mounted accessories



RC330V W30L120 sensor with Surface mounted accessories

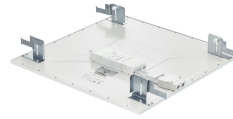


SlimBlend Gen2

Product details



RC330V W60L60 with Surface mounted accessories



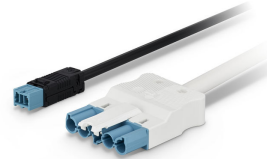
SlimBlendGen2 with CPC accessory DPP02



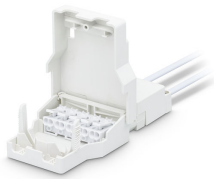
PIP connector DPP02



SlimBlend Gen2 RC330Z_SMB_W30L120



Connector- Wieland DPP02



PIP connector DPP03



Safety cable



SlimBlendGen2_IA4 Sensor with MXO

SlimBlend Gen2

Product details



SlimBlendGen2 MXO-optics



SlimBlend Gen2
RC330Z_SMB_W60L60



SlimBlendGen2 Backview with IA4
sensor



SlimBlendGen2_Suspended
without sensor_W60L60



SlimBlend Gen2_Backview with EL
& Sensor_DPP



SlimBlendGen2_Suspended
without sensor_W30L120



PIP connector DPP01

SlimBlend Gen2

General Information

Driver included	Yes
Light source replaceable	No
Number of gear units	1 unit
Service tag	Yes

Light Technical

Beam angle of light source	120 degree(s)
Correlated Color Temperature (Nom)	4000 K
Color rendering index (CRI)	>90
Optic type	-
Upward light output ratio	0

Operating and Electrical

Protection class IEC	Safety class II
Input Voltage	220 to 240 V
Line Frequency	50 to 60 Hz
Suitable for random switching	No

Controls and Dimming

Dimmable	Yes
Maximum dim level	1%

Mechanical and Housing

Optical cover type	Polycarbonate
Housing Color	White
Mech. impact protection code	IK03

Approval and Application

Ambient temperature range	+10 to +35 °C
CE mark	Yes
ENEC mark	ENEC mark
Flammability mark	For mounting on normally flammable surfaces
Glow-wire test	Temperature 650 °C, duration 30 s

Initial Performance (IEC Compliant)

Initial chromaticity	(0.38, 0.38) SDCM <3
Luminous flux tolerance	+/-10%

Product Data

Product family code	RC330V
---------------------	--------

General Information

Order Code	Full Product Name	Lamp family code
01494700	RC330V 36S/940 SEIA W30L120 IA4 MXO	36S
01466400	RC330V 42S/940 PSD W60L60 MXO	42S

Light Technical

Order Code	Full Product Name	Luminous Efficacy (rated) (Nom)	Luminous Flux
01494700	RC330V 36S/940 SEIA W30L120 IA4 MXO	136 lm/W	3,600 lm

Order Code	Full Product Name	Luminous Efficacy (rated) (Nom)	Luminous Flux
01466400	RC330V 42S/940 PSD W60L60 MXO	133 lm/W	4,200 lm

SlimBlend Gen2

Operating and Electrical

Order Code	Full Product Name	Power Consumption
01494700	RC330V 36S/940 SEIA W30L120 IA4 MXO	26.5 W

Order Code	Full Product Name	Power Consumption
01466400	RC330V 42S/940 PSD W60L60 MXO	31.5 W

Controls and Dimming

Order Code	Full Product Name	Embedded control
01494700	RC330V 36S/940 SEIA W30L120 IA4 MXO	Interact SC200 sensor

Order Code	Full Product Name	Embedded control
01466400	RC330V 42S/940 PSD W60L60 MXO	-

Mechanical and Housing

Order Code	Full Product Name	Ingress protection code
01494700	RC330V 36S/940 SEIA W30L120 IA4 MXO	IP20

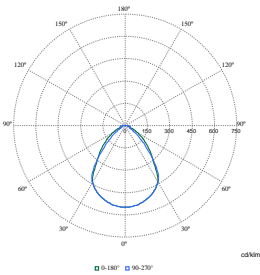
Order Code	Full Product Name	Ingress protection code
01466400	RC330V 42S/940 PSD W60L60 MXO	IP20/44

Emergency Operation

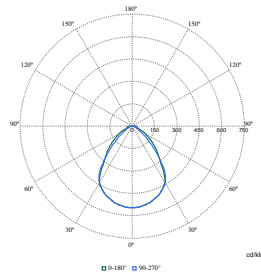
Order Code	Full Product Name	Central Emergency	Emergency lighting
01494700	RC330V 36S/940 SEIA W30L120 IA4 MXO	Yes	DC operated central emergency lighting

Order Code	Full Product Name	Central Emergency	Emergency lighting
01466400	RC330V 42S/940 PSD W60L60 MXO	-	-

Polar Wide Diagrams



Polar Normal (separate) - RC330VI - 910505102447



Polar Normal (separate) - RC330VI - 910505102475

