



# Install smarter, finish sooner Choose long-lasting reliability and performance

## CoreLine recessed

Philips CoreLine recessed delivers on the CoreLine promise of innovative, easy-to-use, high-quality luminaires. It's a high-quality recessed LED that's designed to replace existing recessed luminaires with T8 or T5 technology. This CoreLine family also features an innovative new choice of multiple lumen outputs in one single luminaire, called MultiLumen. Instant energy savings and a longer lifetime, make this is an environmentally-friendly and cost-saving solution. With a quick-connector or Wieland feature, CoreLine RC136B recessed luminaires are quick and easy to install. Also available within the range are Interact Ready luminaires with integrated wireless communications, which are fully compatible with Interact gateways, sensors and software.

### Benefits

- MultiLumen: a choice of different lumen outputs in one single luminaire
- New connector offers quick and simple installation
- Energy savings and longer lifetime to reduce operating costs

# CoreLine recessed

## Features

- MultiLumen: different lumen outputs ranging from 2800 lumen to 4300 lumen in one single luminaire
- Easy connector for faster installation: quick connector or Wieland connector
- Energy efficient and long lifetime: up to 140 lm/W and 50,000 hours @L80 lifetime
- Many flicker-free drivers available: On/off (PSU), dimming (Dali) and integrated wireless connectivity (Interact Ready)
- Office compliant versions (OC) & Non-office compliant versions (NOC)
- High lumen available: up to 6000 lm (OC)
- Optional versions available: Emergency Lighting (EL) & Wieland/Adels connectors (W)

## Application

- Offices
- Healthcare
- Education

## Warnings and Safety

- The product is IPX0 & as such is not protected against water ingress & as such we strongly recommend that The environment in which The luminaire is to be installed is suitably checked
- If the above advice is not taken and the luminaires are subject to water ingress, Philips / Signify cannot guarantee safe failure & product warranty will become void

## Versions

CoreLine Recessed



RC136B 31S\_37S\_43S/840 PSU  
W60L60 NOC W3\_SPP



RC136B 31S\_37S\_43S/840 PSD  
W30L120 OC\_SPP



RC136B 31S\_37S\_43S/840 PSU  
W60L60 OC\_SPP



# CoreLine recessed

## Versions

RC136B 28S\_34S\_40S/830 PSU  
W60L60 NOC W3\_SPP



RC136B 31S\_37S\_43S/840 PSD  
W60L60 NOC W5\_SPP



RC136B 28S\_34S\_40S/830 PSD  
W60L60 OC\_SPP



RC136B 31S\_37S\_43S/840 PSD  
W60L60 OC\_SPP



RC136B 28S\_34S\_40S/830 PSD  
W30L120 OC\_SPP



RC136B 31S\_37S\_43S/840 PSD  
W60L60 OC W5\_SPP



RC136B 28S\_34S\_40S/830 PSD  
W60L60 OC W5\_SPP



RC136B 28S\_34S\_40S/830 PSU  
W60L60 NOC\_SPP



RC136B 31S\_37S\_43S/840 PSU  
W60L60 NOC\_SPP



RC136B 31S\_37S\_43S/840 PSD  
W60L60 NOC\_SPP



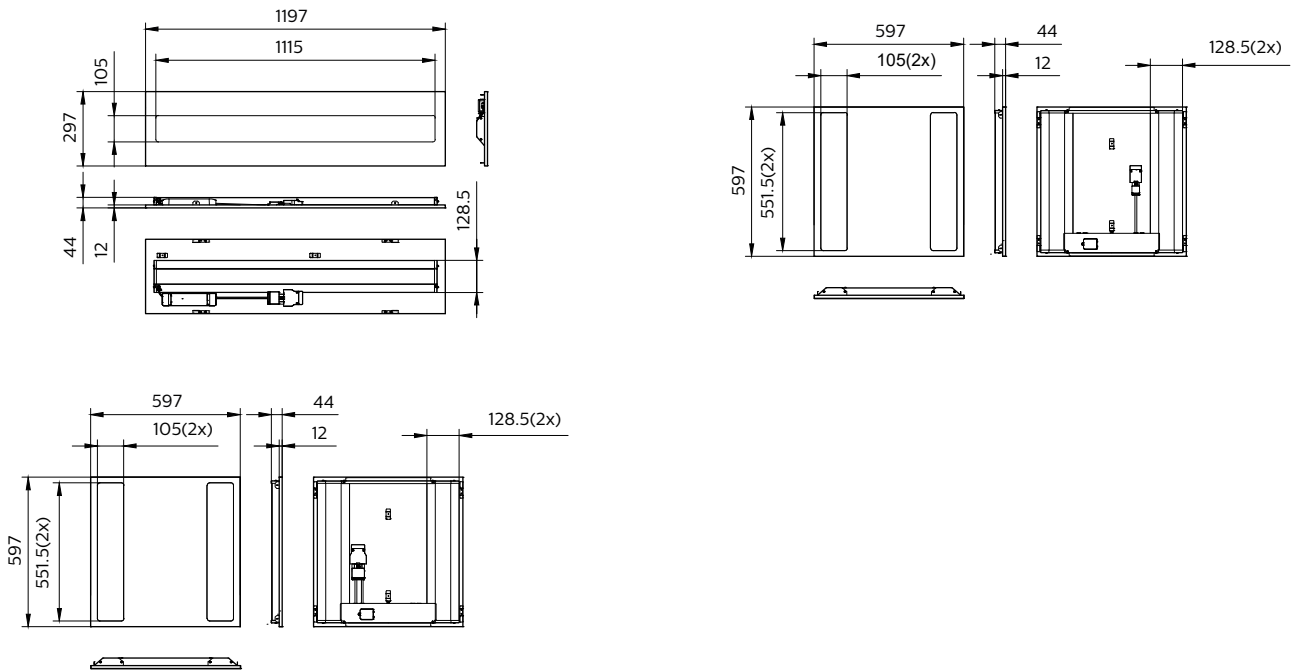
# CoreLine recessed

## Versions

RC136B 31S\_37S\_43S/840 PSU  
W60L60 OC W3\_SPP



## Dimensional drawing

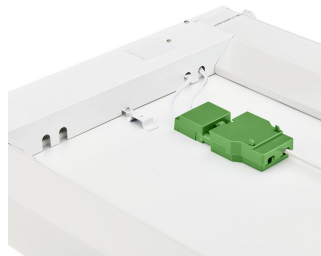


## Product details

CoreLine Recessed Backside



CoreLine Recessed Backside with connector



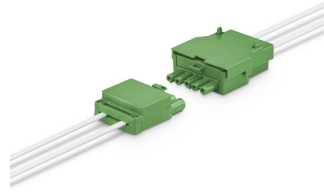
# CoreLine recessed

## Product details

CoreLine Recessed Backside

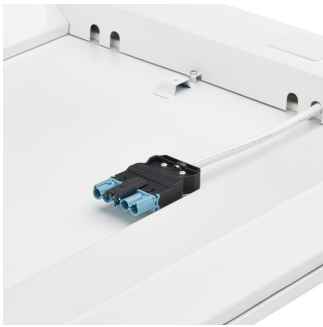


CoreLine Recessed connector PSD (dali)



CoreLine Recessed in ceiling

CoreLine\_Recessed\_RC136B\_60x60



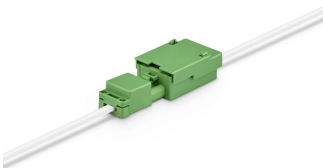
CoreLine Recessed Wileland

CoreLine Recessed



CoreLine Recessed connector PSU (On/Off)

CoreLine Recessed connector PSU (On/Off)



CoreLine Recessed Edge



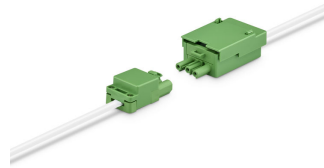
# CoreLine recessed

## Product details

CoreLine Recessed Edge



CoreLine Recessed connector PSU (On/Off)



CoreLine Recessed Safety Cable



CoreLine Recessed in ceiling



Wieland W5 Dali Connector



## General Information

Driver included	Yes
Light source replaceable	No
Number of gear units	1 unit
Service tag	Yes

## Light Technical

Color rendering index (CRI)	>80
-----------------------------	-----

## Operating and Electrical

Input Voltage	220-240 V
Line Frequency	50 or 60 Hz
Suitable for random switching	Yes

## Mechanical and Housing

Housing Color	White
Mech. impact protection code	IK03
Ingress protection code	IP20/44

## Approval and Application

CE mark	Yes
ENEC mark	ENEC mark
Flammability mark	For mounting on normally flammable surfaces
Glow-wire test	Temperature 650 °C, duration 30 s
Flickering value (PstLM) - Flickering value as per EN 61000-3-3	1

## Initial Performance (IEC Compliant)

Luminous flux tolerance	+/-10%
-------------------------	--------

## Light Technical (1/2)

Order Code	Full Product Name	All-in Type	Correlated Color	Luminous	
			Temperature (Nom)	Efficacy (rated) (Nom)	Luminous Flux
911401808285	RC136B 60S/840 PSU W60L60 OC	-	4000 K	130 lm/W	6,000 lm
911401808385	RC136B 60S/840 PSD W60L60 OC	-	4000 K	130 lm/W	6,000 lm
911401867482	RC136B 40S/830 WIA W60L60 OC W3	-	3000 K	135 lm/W	4,000 lm
911401867582	RC136B 43S/840 WIA W60L60 OC W3	-	4000 K	140 lm/W	4,300 lm
911401896681	RC136B 40S/830 WIA W60L60 OC	-	3000 K	135 lm/W	4,000 lm
911401896781	RC136B 43S/840 WIA W60L60 OC	-	4000 K	140 lm/W	4,300 lm
911401881181	RC136B 31S_37S_43S/840 PSU W60L60 NOC W3	All-in, Multi Lumen	4000 K	135 lm/W	3,100 lm
911401880981	RC136B 31S_37S_43S/840 PSD W30L120 OC	All-in, Multi Lumen	4000 K	140 lm/W	3,100 lm
911401880481	RC136B 31S_37S_43S/840 PSU W60L60 OC	All-in, Multi Lumen	4000 K	140 lm/W	3,100 lm
911401881081	RC136B 28S_34S_40S/830 PSU W60L60 NOC W3	All-in, Multi Lumen	3000 K	130 lm/W	2,800 lm
911401881381	RC136B 31S_37S_43S/840 PSD W60L60 NOC W5	All-in, Multi Lumen	4000 K	135 lm/W	3,100 lm
911401880681	RC136B 28S_34S_40S/830 PSD W60L60 OC	All-in, Multi Lumen	3000 K	135 lm/W	2,800 lm
911401880781	RC136B 31S_37S_43S/840 PSD W60L60 OC	All-in, Multi Lumen	4000 K	140 lm/W	3,100 lm
911401880881	RC136B 28S_34S_40S/830 PSD W30L120 OC	All-in, Multi Lumen	3000 K	135 lm/W	2,800 lm
911401867382	RC136B 43S/840 WIA W30L120 OC	-	4000 K	140 lm/W	4,300 lm
911401867682	RC136B 43S/840 WIA W30L120 OC W3	-	4000 K	140 lm/W	4,300 lm
911401881581	RC136B 31S_37S_43S/840 PSD W60L60 OC W5	All-in, Multi Lumen	4000 K	140 lm/W	3,100 lm
911401881481	RC136B 28S_34S_40S/830 PSD W60L60 OC W5	All-in, Multi Lumen	3000 K	135 lm/W	2,800 lm
911401880281	RC136B 28S_34S_40S/830 PSU W60L60 NOC	All-in, Multi Lumen	3000 K	130 lm/W	2,800 lm
911401880381	RC136B 31S_37S_43S/840 PSU W60L60 NOC	All-in, Multi Lumen	4000 K	135 lm/W	3,100 lm
911401880581	RC136B 31S_37S_43S/840 PSD W60L60 NOC	All-in, Multi Lumen	4000 K	135 lm/W	3,100 lm
911401881281	RC136B 31S_37S_43S/840 PSU W60L60 OC W3	All-in, Multi Lumen	4000 K	140 lm/W	3,100 lm

## Light Technical (2/2)

## CoreLine recessed

Order Code	Full Product Name	Optic type
911401808285	RC136B 60S/840 PSU W60L60 OC	Beam angle 84°
911401808385	RC136B 60S/840 PSD W60L60 OC	Beam angle 84°
911401867482	RC136B 40S/830 WIA W60L60 OC W3	Beam angle 84°
911401867582	RC136B 43S/840 WIA W60L60 OC W3	Beam angle 84°
911401896681	RC136B 40S/830 WIA W60L60 OC	Beam angle 84°
911401896781	RC136B 43S/840 WIA W60L60 OC	Beam angle 84°
911401881181	RC136B 31S_37S_43S/840 PSU W60L60 NOC W3	Beam angle 100°
911401880981	RC136B 31S_37S_43S/840 PSD W30L120 OC	Beam angle 84°
911401880481	RC136B 31S_37S_43S/840 PSU W60L60 OC	Beam angle 84°
911401881081	RC136B 28S_34S_40S/830 PSU W60L60 NOC W3	Beam angle 100°
911401881381	RC136B 31S_37S_43S/840 PSD W60L60 NOC W5	Beam angle 100°

Order Code	Full Product Name	Optic type
911401880681	RC136B 28S_34S_40S/830 PSD W60L60 OC	Beam angle 84°
911401880781	RC136B 31S_37S_43S/840 PSD W60L60 OC	Beam angle 84°
911401880881	RC136B 28S_34S_40S/830 PSD W30L120 OC	Beam angle 84°
911401867382	RC136B 43S/840 WIA W30L120 OC	Beam angle 84°
911401867682	RC136B 43S/840 WIA W30L120 OC W3	Beam angle 84°
911401881581	RC136B 31S_37S_43S/840 PSD W60L60 OC W5	Beam angle 84°
911401881481	RC136B 28S_34S_40S/830 PSD W60L60 OC W5	Beam angle 84°
911401880281	RC136B 28S_34S_40S/830 PSU W60L60 NOC	Beam angle 100°
911401880381	RC136B 31S_37S_43S/840 PSU W60L60 NOC	Beam angle 100°
911401880581	RC136B 31S_37S_43S/840 PSD W60L60 NOC	Beam angle 100°
911401881281	RC136B 31S_37S_43S/840 PSU W60L60 OC W3	Beam angle 84°

### Operating and Electrical

Order Code	Full Product Name	Protection class	Power
		IEC	Consumption
911401808285	RC136B 60S/840 PSU W60L60 OC	Safety class II	44 W
911401808385	RC136B 60S/840 PSD W60L60 OC	Safety class II	44 W
911401867482	RC136B 40S/830 WIA W60L60 OC W3	Safety class II	31 W
911401867582	RC136B 43S/840 WIA W60L60 OC W3	Safety class II	31 W
911401896681	RC136B 40S/830 WIA W60L60 OC	Safety class II	31 W
911401896781	RC136B 43S/840 WIA W60L60 OC	Safety class II	31 W
911401881181	RC136B 31S_37S_43S/840 PSU W60L60 NOC W3	Safety class I	31 W
911401880981	RC136B 31S_37S_43S/840 PSD W30L120 OC	Safety class II	31 W
911401880481	RC136B 31S_37S_43S/840 PSU W60L60 OC	Safety class I	31 W
911401881081	RC136B 28S_34S_40S/830 PSU W60L60 NOC W3	Safety class I	31 W
911401881381	RC136B 31S_37S_43S/840 PSD W60L60 NOC W5	Safety class II	31 W

Order Code	Full Product Name	Protection class	Power
		IEC	Consumption
911401880681	RC136B 28S_34S_40S/830 PSD W60L60 OC	Safety class II	31 W
911401880781	RC136B 31S_37S_43S/840 PSD W60L60 OC	Safety class II	31 W
911401880881	RC136B 28S_34S_40S/830 PSD W30L120 OC	Safety class II	31 W
911401867382	RC136B 43S/840 WIA W30L120 OC	Safety class II	31 W
911401867682	RC136B 43S/840 WIA W30L120 OC W3	Safety class II	31 W
911401881581	RC136B 31S_37S_43S/840 PSD W60L60 OC W5	Safety class II	31 W
911401881481	RC136B 28S_34S_40S/830 PSD W60L60 OC W5	Safety class II	31 W
911401880281	RC136B 28S_34S_40S/830 PSU W60L60 NOC	Safety class I	31 W
911401880381	RC136B 31S_37S_43S/840 PSU W60L60 NOC	Safety class I	31 W
911401880581	RC136B 31S_37S_43S/840 PSD W60L60 NOC	Safety class II	31 W
911401881281	RC136B 31S_37S_43S/840 PSU W60L60 OC W3	Safety class I	31 W

### Controls and Dimming

Order Code	Full Product Name	Maximum dim	
		Dimmable	level
911401808285	RC136B 60S/840 PSU W60L60 OC	No	-
911401808385	RC136B 60S/840 PSD W60L60 OC	Yes	3%
911401867482	RC136B 40S/830 WIA W60L60 OC W3	Yes	1%
911401867582	RC136B 43S/840 WIA W60L60 OC W3	Yes	1%
911401896681	RC136B 40S/830 WIA W60L60 OC	Yes	1%
911401896781	RC136B 43S/840 WIA W60L60 OC	Yes	1%
911401881181	RC136B 31S_37S_43S/840 PSU W60L60 NOC W3	No	-

Order Code	Full Product Name	Maximum dim	
		Dimmable	level
911401880981	RC136B 31S_37S_43S/840 PSD W30L120 OC	Yes	3%
911401880481	RC136B 31S_37S_43S/840 PSU W60L60 OC	No	-
911401881081	RC136B 28S_34S_40S/830 PSU W60L60 NOC W3	No	-
911401881381	RC136B 31S_37S_43S/840 PSD W60L60 NOC W5	Yes	3%

## CoreLine recessed

Order Code	Full Product Name	Dimmable	Maximum dim
			level
911401880681	RC136B 28S_34S_40S/830 PSD W60L60 OC	Yes	3%
911401880781	RC136B 31S_37S_43S/840 PSD W60L60 OC	Yes	3%
911401880881	RC136B 28S_34S_40S/830 PSD W30L120 OC	Yes	3%
911401867382	RC136B 43S/840 WIA W30L120 OC	Yes	1%
911401867682	RC136B 43S/840 WIA W30L120 OC W3	Yes	1%
911401881581	RC136B 31S_37S_43S/840 PSD W60L60 OC W5	Yes	3%
911401881481	RC136B 28S_34S_40S/830 PSD W60L60 OC W5	Yes	3%

Order Code	Full Product Name	Dimmable	Maximum dim
			level
911401880281	RC136B 28S_34S_40S/830 PSU W60L60 NOC	No	-
911401880381	RC136B 31S_37S_43S/840 PSU W60L60 NOC	No	-
911401880581	RC136B 31S_37S_43S/840 PSD W60L60 NOC	Yes	3%
911401881281	RC136B 31S_37S_43S/840 PSU W60L60 OC W3	No	-

## Approval and Application

Order Code	Full Product Name	Ambient temperature range	Stroboscopic
			effect visibility measure (SVM)
911401808285	RC136B 60S/840 PSU W60L60 OC	-10 to +35 °C	0.4
911401808385	RC136B 60S/840 PSD W60L60 OC	-10 to +35 °C	0.4
911401867482	RC136B 40S/830 WIA W60L60 OC W3	-10 to +40 °C	0.4
911401867582	RC136B 43S/840 WIA W60L60 OC W3	-10 to +40 °C	0.4
911401896681	RC136B 40S/830 WIA W60L60 OC	-10 to +40 °C	0.4
911401896781	RC136B 43S/840 WIA W60L60 OC	-10 to +40 °C	0.4
911401881181	RC136B 31S_37S_43S/840 PSU W60L60 NOC W3	-10 to +40 °C	1.6
911401880981	RC136B 31S_37S_43S/840 PSD W30L120 OC	-10 to +40 °C	1.6
911401880481	RC136B 31S_37S_43S/840 PSU W60L60 OC	-10 to +40 °C	1.6
911401881081	RC136B 28S_34S_40S/830 PSU W60L60 NOC W3	-10 to +40 °C	1.6
911401881381	RC136B 31S_37S_43S/840 PSD W60L60 NOC W5	-10 to +40 °C	1.6

Order Code	Full Product Name	Ambient temperature range	Stroboscopic
			effect visibility measure (SVM)
911401880681	RC136B 28S_34S_40S/830 PSD W60L60 OC	-10 to +40 °C	1.6
911401880781	RC136B 31S_37S_43S/840 PSD W60L60 OC	-10 to +40 °C	1.6
911401880881	RC136B 28S_34S_40S/830 PSD W30L120 OC	-10 to +40 °C	1.6
911401867382	RC136B 43S/840 WIA W30L120 OC	-10 to +40 °C	0.4
911401867682	RC136B 43S/840 WIA W30L120 OC W3	-10 to +40 °C	0.4
911401881581	RC136B 31S_37S_43S/840 PSD W60L60 OC W5	-10 to +40 °C	1.6
911401881481	RC136B 28S_34S_40S/830 PSD W60L60 OC W5	-10 to +40 °C	1.6
911401880281	RC136B 28S_34S_40S/830 PSU W60L60 NOC	-10 to +40 °C	1.6
911401880381	RC136B 31S_37S_43S/840 PSU W60L60 NOC	-10 to +40 °C	1.6
911401880581	RC136B 31S_37S_43S/840 PSD W60L60 NOC	-10 to +40 °C	1.6
911401881281	RC136B 31S_37S_43S/840 PSU W60L60 OC W3	-10 to +40 °C	1.6

## Initial Performance (IEC Compliant)

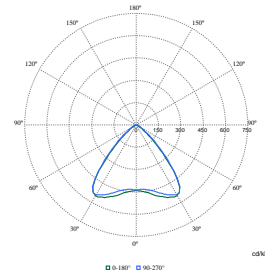
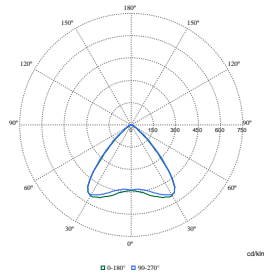
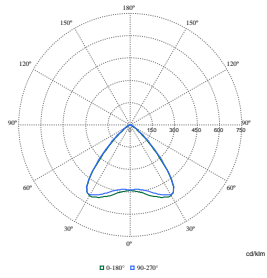
Order Code	Full Product Name	Initial chromaticity
911401808285	RC136B 60S/840 PSU W60L60 OC	(0.38, 0.38) SDCM ≤3
911401808385	RC136B 60S/840 PSD W60L60 OC	(0.38, 0.38) SDCM ≤3
911401867482	RC136B 40S/830 WIA W60L60 OC W3	(0.43, 0.40) SDCM ≤3
911401867582	RC136B 43S/840 WIA W60L60 OC W3	(0.38, 0.38) SDCM ≤3
911401896681	RC136B 40S/830 WIA W60L60 OC	(0.43, 0.40) SDCM ≤3
911401896781	RC136B 43S/840 WIA W60L60 OC	(0.38, 0.38) SDCM ≤3
911401881181	RC136B 31S_37S_43S/840 PSU W60L60 NOC W3	(0.38, 0.38) SDCM ≤3

Order Code	Full Product Name	Initial chromaticity
911401880981	RC136B 31S_37S_43S/840 PSD W30L120 OC	(0.38, 0.38) SDCM ≤3
911401880481	RC136B 31S_37S_43S/840 PSU W60L60 OC	(0.38, 0.38) SDCM ≤3
911401881081	RC136B 28S_34S_40S/830 PSU W60L60 NOC W3	(0.43, 0.40) SDCM ≤3
911401881381	RC136B 31S_37S_43S/840 PSD W60L60 NOC W5	(0.38, 0.38) SDCM ≤3
911401880681	RC136B 28S_34S_40S/830 PSD W60L60 OC	(0.43, 0.40) SDCM ≤3
911401880781	RC136B 31S_37S_43S/840 PSD W60L60 OC	(0.38, 0.38) SDCM ≤3

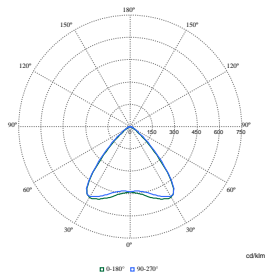
# CoreLine recessed

Order Code	Full Product Name	Initial chromaticity	Order Code	Full Product Name	Initial chromaticity
911401880881	RC136B 28S_34S_40S/830 PSD W30L120 OC	(0.43, 0.40) SDCM $\leq$ 3	911401880281	RC136B 28S_34S_40S/830 PSU W60L60 NOC	(0.43, 0.40) SDCM $\leq$ 3
911401867382	RC136B 43S/840 WIA W30L120 OC	(0.38, 0.38) SDCM $\leq$ 3	911401880381	RC136B 31S_37S_43S/840 PSU W60L60 NOC	(0.38, 0.38) SDCM $\leq$ 3
911401867682	RC136B 43S/840 WIA W30L120 OC W3	(0.38, 0.38) SDCM $\leq$ 3	911401880581	RC136B 31S_37S_43S/840 PSD W60L60 NOC	(0.38, 0.38) SDCM $\leq$ 3
911401881581	RC136B 31S_37S_43S/840 PSD W60L60 OC W5	(0.38, 0.38) SDCM $\leq$ 3	911401881281	RC136B 31S_37S_43S/840 PSU W60L60 OC W3	(0.38, 0.38) SDCM $\leq$ 3
911401881481	RC136B 28S_34S_40S/830 PSD W60L60 OC W5	(0.43, 0.40) SDCM $\leq$ 3			

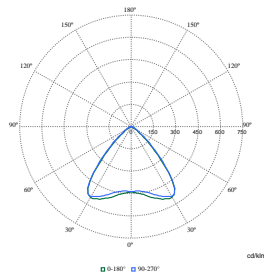
## Polar Wide Diagrams



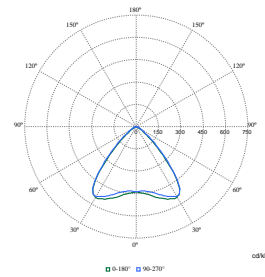
Polar Normal (separate) - 911401808285



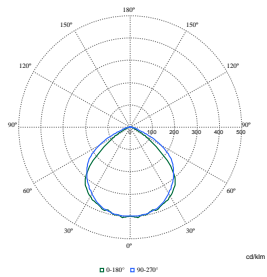
Polar Normal (separate) - 911401808385



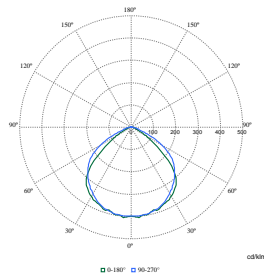
Polar Normal (separate) - 911401867382



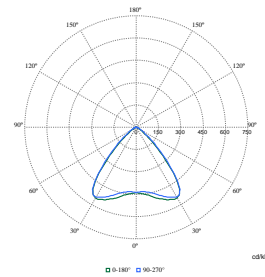
Polar Normal (separate) - 911401867482



Polar Normal (separate) - 911401867582



Polar Normal (separate) - 911401867682



Polar Normal (separate) - 911401880281



Polar Normal (separate) - 911401880381



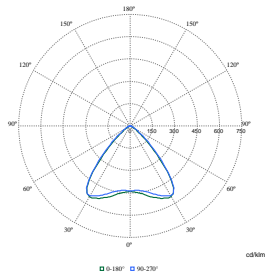
Polar Normal (separate) - 911401880481





# CoreLine recessed

## Polar Wide Diagrams



Polar Normal (separate) - 911401896781

