



Trusted performance. Every day.

Ledinaire panel gen5

The Philips Ledinaire panel Gen5 (RC065B/RC066B) range features a selection of popular off-the-shelf LED luminaires that offer Philips high quality at a competitive price. Reliable, energy-efficient and affordable, this latest generation of 600 x 600 mm, 620 x 620 mm, 300 x 1200 mm and 600 x 1200 Ledinaire LED panel lights are designed for diffuse, comfortable lighting in a wide range of general lighting applications. Our range of Ledinaire panels lighting is also available with accessories for easy installation on different types of ceilings — just what you need.

Benefits

- No risks, trusted performance
- Good quality, easy to use
- No confusion, easy product selection
- Innovative All-in multicolour and basic lighting control versions
- Broad range

Features

- 3400 lm/ 3600 lm / 4100 lm: L80 at 50K hrs, L70 75K hrs and 3-year warranty
- IP20 / IP40
- Connectors: white quick connectors and flywire
- Sizes: 60 x 60 mm / 62 x 62 mm / 30 x 120 mm / 60 x 120 mm
- Colour rendering: CRI 80 at SDCM <5
- 3000K / 3500K / 4000K / 6500K
- PSU / PSD
- Efficacy: 120 Lm/W
- All-in: 3000K, 3500K and 4000K in one luminaire

Ledinaire panel gen5

Application

- Offices
- Healthcare
- Education
- Municipal buildings
- Retail

Versions

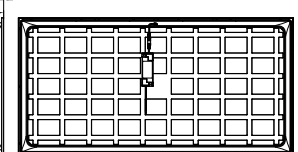
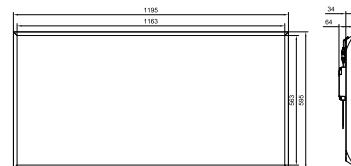
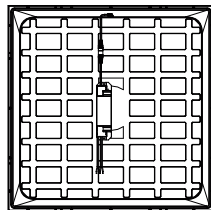
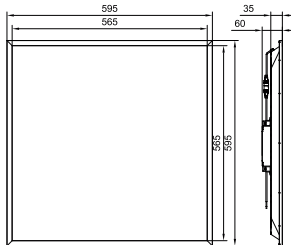
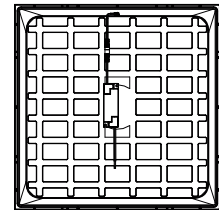
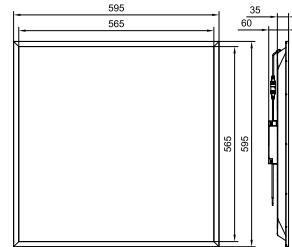
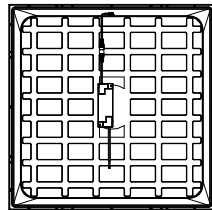
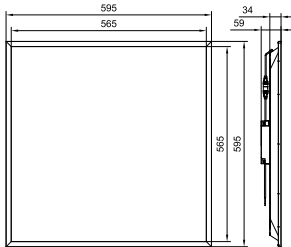


Ledinaire panel G5 60x120



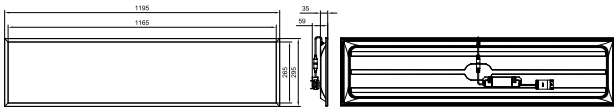
Ledinaire Panel G5 All in W30L120 RTP

Dimensional drawing



Ledinaire panel gen5

Dimensional drawing



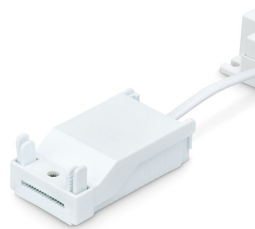
Product details



Ledinaire Panel G5 All in CCT
Switch 3000K



Ledinaire Panel G5 Back housing
PSU Flywire (CFW)



White Quick connector-closed



Panel flywires CFW + backside
panel



Ledinaire Panel G5 All in CCT
Switch PSU ON OFF Driver Open
connector



Ledinaire Panel G5 PSD DALI
Driver Open connector

Ledinaire panel gen5

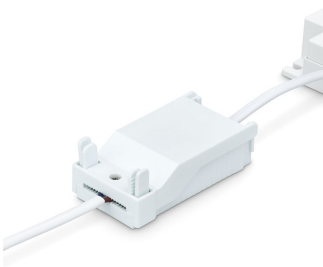
Product details



Ledinaire Panel G5 PSD DALI
Driver Closed connector



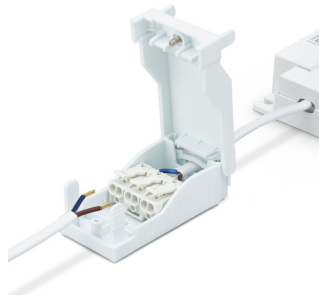
Ledinaire panel G5 frame and
optical area 60x120



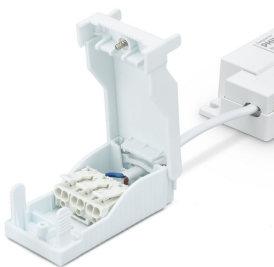
White Quick connector+wire-
closed



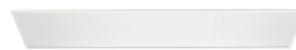
Ledinaire Panel Gen 5-RC065B
W60L120-backside



White Quick connector +wire-open



White Quick connector-open



Ledinaire Panel RC065B G5
30x120 Packaging



Panel flywires CFW



Ledinaire Panel RC065B Square
backside



Ledinaire Panel Gen 5-
RC065B_RC066B Square-
backside-PSU driver and
connector

Ledinaire panel gen5

Product details



Ledinaire Panel Gen 5-RC065B_RC066B Square-backside



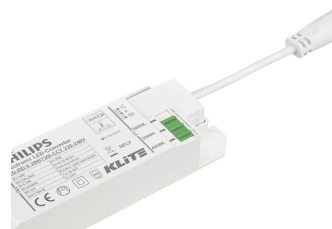
Ledinaire Panel RC065B G5 PSU 30x120 Backside



Ledinaire Panel G5 All in CCT Switch PSU ON OFF Driver Closed connector



Ledinaire Panel G5 All in CCT Switch 3500K



Ledinaire Panel G5 All in CCT Switch 4000K



Ledinaire Panel Gen 5-RC065B W60L120-backside-PSU driver and Flywire



Ledinaire Panel Gen 5-RC065B_RC066B Square-backside-PSU driver and connector

Ledinaire panel gen5

General Information

Driver included	Yes
Number of gear units	Unit

Light Technical

Colour rendering index (CRI)	>80
Luminous efficacy (rated) (nom.)	120 lm/W

Operating and Electrical

Protection class IEC	Safety class II
Input Voltage	220 to 240 V
Line Frequency	50 or 60 Hz
Suitable for random switching	Not applicable

Mechanical and Housing

Housing Colour	White
Mech. impact protection code	IK02
Ingress protection code	IP20/40

Emergency Operation

Central Emergency	No
-------------------	----

Approval and Application

Ambient temperature range	-10 to +35 °C
CE mark	Yes
ENEC mark	-
Flammability mark	For mounting on normally flammable surfaces
Glow-wire test	Temperature 650 °C, duration 30 s
Flickering value (PstLM)	1

Initial Performance (IEC Compliant)

Luminous flux tolerance	-10% / +10%
-------------------------	-------------

Light Technical (1/2)

Order Code	Full Product Name	All-in Type	Beam angle of light source	Correlated Colour	
				Temperature (Nom)	Luminous Flux
911401876985	RC065B G5 60S/840 PSU 60x120 NOC TPb CFW	-	120 degree(s)	4000 K	6,000 lm
911401875185	RC065B G5 34S/840 PSU W60L60 OC CFW	-	90 degree(s)	4000 K	3,400 lm
911401875485	RC065B G5 34S/840 PSU W60L60 NOC CFW	-	120 degree(s)	4000 K	3,400 lm
911401875785	RC065B G5 34S/840 PSD W60L60 OC CFW	-	90 degree(s)	4000 K	3,400 lm
911401877585	RC065B G5 34_36S/830_40 PSU 30x120 OC SC	All-in, Multi Color Temperature	90 degree(s)	3000 K	3,400 lm

Light Technical (2/2)

Order Code	Full Product Name	Optic type
911401876985	RC065B G5 60S/840 PSU 60x120 NOC TPb CFW	Beam angle 120°
911401875185	RC065B G5 34S/840 PSU W60L60 OC CFW	Beam angle 90°
911401875485	RC065B G5 34S/840 PSU W60L60 NOC CFW	Beam angle 120°

Order Code	Full Product Name	Optic type
911401875785	RC065B G5 34S/840 PSD W60L60 OC CFW	Beam angle 90°
911401877585	RC065B G5 34_36S/830_40 PSU 30x120 OC SC	Beam angle 90°

Operating and Electrical

Order Code	Full Product Name	Power Consumption
911401876985	RC065B G5 60S/840 PSU 60x120 NOC TPb CFW	50 W
911401875185	RC065B G5 34S/840 PSU W60L60 OC CFW	28 W
911401875485	RC065B G5 34S/840 PSU W60L60 NOC CFW	28 W

Order Code	Full Product Name	Power Consumption
911401875785	RC065B G5 34S/840 PSD W60L60 OC CFW	28 W
911401877585	RC065B G5 34_36S/830_40 PSU 30x120 OC SC	28 W

Controls and Dimming

Ledinaire panel gen5

Order Code	Full Product Name	Dimmable	Maximum dim level
911401876985	RC065B G5 60S/840 PSU 60x120 NOC TPb CFW	No	Not applicable
911401875185	RC065B G5 34S/840 PSU W60L60 OC CFW	No	Not applicable
911401875485	RC065B G5 34S/840 PSU W60L60 NOC CFW	No	Not applicable

Order Code	Full Product Name	Dimmable	Maximum dim level
911401875785	RC065B G5 34S/840 PSD W60L60 OC CFW	Yes	1%
911401877585	RC065B G5 34_36S/830_40 PSU 30x120 OC SC	No	Not applicable

Initial Performance (IEC Compliant)

Order Code	Full Product Name	Initial chromaticity
911401876985	RC065B G5 60S/840 PSU 60x120 NOC TPb CFW	(0.38, 0.38) SDCM ≤5
911401875185	RC065B G5 34S/840 PSU W60L60 OC CFW	(0.38, 0.38) SDCM ≤5
911401875485	RC065B G5 34S/840 PSU W60L60 NOC CFW	(0.38, 0.38) SDCM ≤5

Order Code	Full Product Name	Initial chromaticity
911401875785	RC065B G5 34S/840 PSD W60L60 OC CFW	(0.38, 0.38) SDCM ≤5
911401877585	RC065B G5 34_36S/830_40 PSU 30x120 OC SC	(0.43, 0.40) SDCM ≤5 ; (0.38, 0.38) SDCM ≤5

